

25/26

THE **RIIDE**™





## FGR-U3

MSRP \$2599

- **Open CLASS II\***
- **Motor-** 750W 85nM 3spd CVT 48V
- **Battery-** Dual Battery Option
  - 48V 14.5Ah 2900mA
- **Brakes-** Hydraulic Disc 203FT/180mm rotor
- **Belt Drive-** Carbon Fiber (Gearing Option\*\*)
- **Tires-** eMG 27.5" x 2.6" e-Rated
- **Bar-** eMG 660mm 25mm Rise, 38° Sweep Back
- **Stem-** eMG adjustable 0-90° ext. 90mm
- **INCLUDES-** Fenders, Rear Light w/Brake & Turn Signal, FT Light 900 lumens, Kickstand
- **OPTION-** Front Rack

URBAN

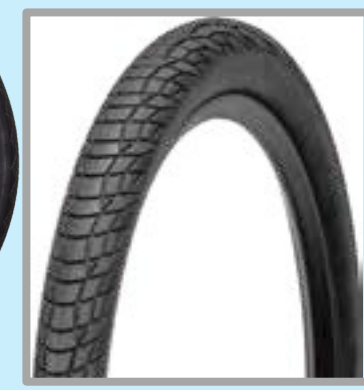
Key Notes on PHOTOS- For Color Only Spec is completely different- Actual is Rear Hub Drive, No Suspension and 2.6" Tire width; Bolt on Rear Rack & Fenders



## FGR-U1

MSRP \$2399


- **Open CLASS II\***
- **Motor-** 750W 85nM 1spd 48V
- **Battery-** Dual Battery Option
  - 48V 14.5Ah 2900mA
- **Brakes-** Hydraulic Disc 203FT/180mm rotor
- **Belt Drive-** Carbon Fiber (Gearing Option\*\*)
- **Tires-** eMG 27.5" x 2.6" e-Rated
- **Bar-** eMG 660mm 25mm Rise, 38° Sweep Back
- **Stem-** eMG adjustable 0-90° ext. 90mm
- **INCLUDES-** Rear Light w/Brake, FT Headlight 450, Kickstand
- **OPTION-** Fenders & Front Rack





# FGR- URBAN Product Specification



		Frame	Fork	Headset	Handlebar	Stem	Grips	Saddle	Seat Clamp		
FGR U3	URBAN- Step Thru- 3 Spd	Aluminum	Thru Axel-Aluminum	eMG- w/Internal Cable Routing- 1-1/8" to 1-1/2" sealed	ZOOM- 660mm Wide, 38° Sweep Back, 25mm Rise, Al, Blk	ZOOM- 90mm Extension, 0-90° Adjustable Rise, Aluminum, Black Ano	eMG by Velo- Ergo, TPU, Locking w/Closed End, Black	eMG by Velo- Comfort Leather, CroMo Rails, 265x195mm, BLK	eMG by Zoom- Quick Release, Ø35.0*Ø33.8 Al, Black Ano		
FGR U1	URBAN Step Thru- 1 Spd										
		Seat Post	Brakes	Crank Set	Bottom Bracket	Belt	Gearing	Pedals	Wheels	Tires / Tubes	
	FGR U3		eMG by Star Union (SU)- Hydraulic 4 piston, 3 finger, Ceramic Pad, Motor Cut-Off, 203mm FT/ 180mm RR Rotor	eMG- EC33 w/BG6, 165mm, 4 Bolt, w/Chain Guard, Al, Blk	eMG Dual Sensor, Cadence & Torque Sensor, BBTS3PSD	eMG- Carbon/Rubber, 12mm	eMG-52Tx22T, 11mm, CroMo Chain Ring, Alloy Cog- OPTION 48T w/Belt	eMG-Platform, CroMoly spindle, Aluminum Body, 9/16" thread, Black	eMG, Front, THRU AXEL, 27.5", Stainless Steel Spokes Black, 36 hole, 13G- Front, 12G Rear	Street, ZC-H5213E, 27.5" x2.6", E50 Rated, Anti Puncture, w/Reflective Side Walls, Black, SV Tubes	
	FGR U1						eMG-48Tx22T, 11mm, CroMo Chain Ring, Alloy Cog- OPTION 52T w/Belt				
			Motor	Controller	HMI / Display	Wiring Harness / CAM BUS	Throttle	Turn Signals	Battery	Charger	Key
	FGR U3	eMG- 3spd CVT, 750W, 48V, 85nM, Rear Motor Drive	eMG by LISHUI, 25A, IPX6	eMG- K-DISP, KD686, 2" TFT, 5 PAS levels, IPX6	eMG- JULET, 2T5 Waterproof, wiring harness	eMG- SU- 300X, IPX5	eMG-SU- DK168, IPX5	48V/14.5Ah, 2900mA, 65 Cells, UART, UL2271/2849, battery connection plates	eMG- SVE, XVE126, 54.6V/2A, 120W	100 options, w/Master Key for Dealership	
	FGR U1	eMG-1Spd, 750W, 48V, 85nM, Rear Motor Drive					OPTIONAL-Upgrade				
			Light- Front	Light- Rear	Rack- Front	Rack- Rear	Kickstand	Fender Set	Reflector Set		
	FGR U3	eMG- SU- QD470-4DC6-20V, 2W,IPX5, 450 lumens	eMG-SU- WD332-3, Brake Light w/Turn Signal, IPX5	OPTIONAL- eMG- 30lbs/13.5kg limit, Aluminium, Black	Installed, eMG- 65lbs/30kg weight limit, Aluminum, Black	eMG- 40mm, 2bolt, rear mount, Adjustable, Al, Black	eMG- Front & Rear, U-type holder, Fit Strut	Reflector Set- Front, Rear, and 2 Wheels			
	FGR U1		eMG- SU- WD332-2, Brake Light, IPX5		OPTIONAL- Upgrade		OPTIONAL- eMg- FT& RR, U-type holder, Fit Strut				

Rider Weight Limit MAX is 325 lbs. ~ Evenly distributed weight with racks MAX is 420 lbs. ~ Weight Tow Capacity MAX is 125 lbs.

NOTE battery range and optimal efficiency is based on a total weight of 250 lbs. Added weight impact battery performance

## HIGHLIGHTS and NOTES

\*\*Gearing Option- The Opportunity to change from a 52, 50, 48, 46 Tooth Front Chain Ring OPTION- will include new belt

Subject to change without notice- updated 07/01/25



**THE RIDE™**



## FGR-U3

MSRP \$2799

- **Open CLASS II\***
- **Motor-** 750W 85nM **3spd** CVT 48V
- **Battery-** Dual Battery Option
  - 48V 14.5Ah 2900mA
- **Brakes-** Tektro Cable Disc 203FT/180mm rotor
- **Belt Drive-** Carbon Fiber (Gearing Option\*\*)
- **Tires-** eMG 20" x 3.0" e-Rated
- **Bar-** eMG 660mm 45mm Rise, 9° Sweep Back
- **Stem-** eMG adjustable 0-90° ext. 90mm
- **INCLUDES-** Fenders, Rear Light w/Brake & Turn Signal, FT Light 900 lumens, Kickstand
- **OPTION-** Front Rack

Key Notes on PHOTOS comes with bolt on Rear Rack & Fenders



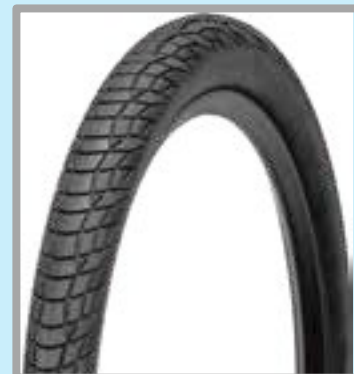
**FOLDING**

## FGR-U1

MSRP \$2549


- **Open CLASS II\***
- **Motor-** 750W 85nM **1spd** 48V
- **Battery-** Dual Battery Option
  - 48V 14.5Ah 2900mA
- **Brakes-** Tektro Cable Disc 203FT/180mm rotor
- **Belt Drive-** Carbon Fiber (Gearing Option\*\*)
- **Tires-** eMG 20" x 3.0" e-Rated
- **Bar-** eMG 660mm 45mm Rise, 9° Sweep Back
- **Stem-** eMG adjustable 0-90° ext. 90mm
- **INCLUDES-** Rear Light w/Brake, FT Headlight 450, Kickstand
- **OPTION-** Fenders & Front Rack

**THE RIDE™**





# FGR- FOLDING Product Specification

		Frame	Fork	Headset	Handlebar	Stem	Grips	Saddle	Seat Clamp		
FGR X3	FOLDING- Step Thru- 3 Spd	Aluminum, BB Hinge	Thru Axel-Aluminum	eMG- w/Internal Cable Routing- 1-1/8" to 1-1/2" sealed	eMG by-ZOOM- 660mm Wide, 9° Sweep Back, 45mm Rise, Al, Blk	eMg by- ZOOM- Aluminum, Black Ano, 25.4	eMG by Velo- Ergo, TPU, Locking w/Closed End, Black	eMG by Velo- Comfort Leather, CroMo Rails, 265x195mm, BLK	eMG by Zoom- Quick Release, Ø35.0*Ø33.8 Al, Black Ano		
FGR X1	FOLDING- Step Thru- 1 Spd										
		Seat Post	Brakes	Crank Set	Bottom Bracket	Belt	Gearing	Pedals	Wheels	Tires / Tubes	
	FGR X3	eMG by Zoom-30.9mm, 400mm, Bonded Head, Al, Black Ano	Tektro- Mechanical- w/Motor Cut-Off, 180mm Rotor	eMG- EC33 w/BG6, 165mm, 4 Bolt, w/Chain Guard, Al, Blk	eMG Dual Sensor, Cadence & Torque Sensor, BBTS3PSD	eMG- Carbon/Rubber, 12mm	eMG-52Tx22T, 11mm, CroMo Chain Ring, Alloy Cog- OPTION 48T w/Belt	eMG-Platform, CroMoly spindle, Aluminum Body, 9/16" thread, Black	eMG, Front, THRU AXEL, 20", Stainless Steel Spokes Black, 36 hole, 13G- Front, 12G Rear	Street, ZC-H5213E, 20" x 3.0", E50 Rated, Anti Puncture, w/Reflective Side Walls, Black, SV Tubes	
	FGR X1						eMG-48Tx22T, 11mm, CroMo Chain Ring, Alloy Cog- OPTION 52T w/Belt				
			Motor	Controller	HMI / Display	Wiring Harness / CAM BUS	Throttle	Turn Signals	Battery	Charger	Key
	FGR X3	eMG- 3spd CVT, 750W, 48V, 85nM, Rear Motor Drive	eMG by LISHUI, 25A, IPX6	eMG- K-DISP, KD686, 2" TFT, 5 PAS levels, IPX6	eMG- JULET, 2T5 Waterproof, wiring harness	eMG- SU- 300X, IPX5	eMG-SU- DK168, IPX5	48V/14.5Ah, 2900mA, 65 Cells, UART, UL2271/2849, battery connection plates	eMG- SVE, XVE126, 54.6V/2A, 120W	100 options, w/Master Key for Dealership	
	FGR X1	eMG-1Spd, 750W, 48V, 85nM, Rear Motor Drive					Option Upgrade				
			Light- Front	Light- Rear	Rack- Front	Rack- Rear	Kickstand	Fender Set	Reflector Set		
	FGR X3	eMG- SU- QD470-4DC6-20V, 2W,IPX5, 450 lumens	eMG-SU- WD332-3, Brake Light w/Turn Signal, IPX5	<b>OPTIONAL-</b> eMG- 30lbs/13.5kg limit, Aluminium, Black	Installed, eMG- 65lbs/30kg weight limit, Aluminum, Black	eMG- 40mm, 2bolt, rear mount, Adjustable, Al, Black	eMG- Front & Rear, U-type holder, Fit Strut	Reflector Set- Front, Rear, and 2 Wheels			
	FGR X1		eMG- SU- WD332-2, Brake Light, IPX5		<b>OPTIONAL-</b> Upgrade		<b>OPTIONAL-</b> eMg- FT& RR, U-type holder, Fit Strut				

Rider Weight Limit MAX is 325 lbs. ~ Evenly distributed weight with racks MAX is 420 lbs. ~ Weight Tow Capacity MAX is 125 lbs.

NOTE battery range and optimal efficiency is based on a total weight of 250 lbs. Added weight impact battery performance

## HIGHLIGHTS and NOTES

\*\*Gearing Option- The Opportunity to change from a 52, 50, 48, 46 Tooth Front Chain Ring OPTION- will include new belt

**THE RIDE™**



## FGR-F3

MSRP \$2799

- **Open CLASS II\***
- **Motor-** 750W 85nM **3-spd CVT** 48V
- **Battery-** 48V 14.5Ah 2900mA
- **Brakes-** Hydraulic Disc 203FT/180mm rotor
- **Belt Drive-** Carbon Fiber (Gearing Option\*\*)
- **Tires-** eMG 26" x 4.0" e-Rated
- **Bar-** eMG 660mm 25mm Rise, 6° Sweep Back
- **Stem-** eMG 50mm ext. w/ 0°
- **INCLUDES-** Fenders, Rear Light w/Brake & Turn Signal, FT Light 900 lumens, Kickstand
- **OPTION-** Front Rack

**FAT**

Key Notes on PHOTOS comes with bolt on Rear Rack, FGR-F2 comes w/Fenders



## FGR-F1

MSRP \$2549


- **Open CLASS II\***
- **Motor-** 750W 85nM **1spd** 48V
- **Battery-** 48V 14.5Ah 2900mA
- **Brakes-** Hydraulic Disc 203FT/180mm rotor
- **Belt Drive-** Carbon Fiber (Gearing Option\*\*)
- **Tires-** eMG 26" x 4.0" e-Rated
- **Bar-** eMG 660mm 25mm Rise, 6° Sweep Back
- **Stem-** eMG 50mm ext. w/ 0°
- **INCLUDES-** Rear Light w/Brake, FT Headlight 450, Kickstand
- **OPTION-** Fenders & Front & Rear Rack

**THE RIDE™**





# FGR- FAT Product Specification

		Frame	Fork	Headset	Handlebar	Stem	Grips	Saddle	Seat Clamp			
FGR F3	FAT TIRE- Step Thru- 3 Spd	Aluminum	Thru Axel-Aluminum	eMG- w/Internal Cable Routing- 1-1/8" to 1-1/2" sealed	eMG by ZOOM- 620mm Wide, 6° Sweep Back, 25mm Rise, Al, Blk	eMG by ZOOM- 50mm Extension, 6° Rise, Al, Black Ano	eMG by Velo- Ergo, TPU, Locking w/Closed End, Black	eMG by Velo- Comfort Leather, CroMo Rails, 265x195mm, BLK	eMG by Zoom- Quick Release, Ø35.0*Ø33.8 Al, Black Ano			
FGR F1	FAT TIRE- Step Thru- 1 Spd											
		Seat Post	Brakes	Crank Set	Bottom Bracket	Belt	Gearing	Pedals	Wheels	Tires / Tubes		
	FGR F3	eMG by Zoom-30.9mm, 400mm, Bonded Head, Al, Black Ano	eMG by Star Union (SU)- Hydraulic 4 piston, 3 finger, Ceramic Pad, Motor Cut-Off, 203mm FT/ 180mm RR Rotor	eMG- E53 w/BG6, 165mm, 4 Bolt, w/Chain Guard, Al, Blk	eMG Dual Sensor, Cadence & Torque Sensor, BBT53PSD	eMG- Carbon/Rubber, 12mm	eMG-52Tx22T, 11mm, CroMo Chain Ring, Alloy Cog- OPTION 48T w/Belt	eMG-Platform, CroMoly spindle, Aluminum Body, 9/16" thread, Black	eMG, Front, THRU AXEL, 26", Stainless Steel Spokes Black, 36 hole, 13G- Front, 12G Rear	FAT Knobby- ZC-H5176, 26" x 4.0", E50 Rated, Anti Puncture, w/Reflective Side Walls, Black, SV Tubes		
	FGR F1						eMG-48Tx22T, 11mm, CroMo Chain Ring, Alloy Cog- OPTION 52T w/Belt					
			Motor	Controller	HMI / Display	Wiring Harness / CAM BUS	Throttle	Turn Signals	Battery	Charger	Key	
	FGR F3	eMG- 3spd CVT, 750W, 48V, 85nM, Rear Motor Drive	eMG by LISHUI, 25A, IPX6	eMG- K-DISP, KD686, 2" TFT, 5 PAS levels, IPX6	eMG- JULET, 2T5 Waterproof, wiring harness	eMG- SU- 300X, IPX5		eMG-SU- DK168, IPX5	48V/14.5Ah, 2900mA, 65 Cells, UART, UL2271/2849, battery connection plates	eMG- SVE, XVE126, 54.6V/2A, 120W	100 options, w/Master Key for Dealership	
	FGR F1	eMG-1Spd, 750W, 48V, 85nM, Rear Motor Drive					Option Upgrade					
			Light- Front	Light- Rear	Rack- Front	Rack- Rear	Kickstand	Fender Set	Reflector Set			
	FGR F3	eMG- SU- QD470-4DC6-20V, 2W,IPX5, 450 lumens	eMG-SU- WD332-3, Brake Light w/Turn Signal, IPX5	<b>OPTIONAL-</b> eMG- 30lbs/13.5kg limit, Aluminium, Black	Installed, eMG- 65lbs/30kg weight limit, Aluminum, Black	eMG- 40mm, 2bolt, rear mount, Adjustable, Al, Black	eMG- Front & Rear, U-type holder, Fit Strut	Reflector Set- Front, Rear, and 2 Wheels				
	FGR F1		eMG- SU- WD332-2, Brake Light, IPX5		<b>OPTIONAL-</b> Upgrade		<b>OPTIONAL-</b> eMg- FT& RR, U-type holder, Fit Strut					

Rider Weight Limit MAX is 375 lbs. ~ Evenly distributed weight with racks MAX is 470 lbs. ~ Weight Tow Capacity MAX is 250 lbs.

NOTE battery range and optimal efficiency is based on a total weight of 250 lbs. Added weight impact battery performance

## HIGHLIGHTS and NOTES

\*\*Gearing Option- The Opportunity to change from a 52, 50, 48, 46 Tooth Front Chain Ring OPTION- will include new belt  
Additional Upgrade Options of displays, lights, saddles and more





## FGR-c3

MSRP \$2949

- **Open CLASS II\***
- **Motor-** 750W 85nM 3spd CVT 48V
- **Battery-** Dual Battery Option
  - 48V 14.5Ah 3200mA /14V 11.6Ah 2700mA
- **Brakes-** Hydraulic Disc 203FT/180mm rotor
- **Belt Drive-** Carbon Fiber (Gearing Option\*\*)
- **Tires-** eMG 20" x 4.0" e-Rated
- **Bar-** eMG 660mm 45mm Rise, 9° Sweep Back
- **INCLUDES-** Fenders, Rear Light w/Brake & Turn Signal, FT Light 900 lumens, Dual Leg Kickstand
- **OPTION-** Front Rack

CARGO

Key Notes on PHOTOS-Rear Rack is integrated in Frame, H/Bar has sweep back, FGR-C2 Fenders are OPTIONAL



## FGR-c1

MSRP \$2699

- **Open CLASS II\***
- **Motor-** 750W 85nM 1spd 48V
- **Battery-** Dual Battery Option
  - 48V 14.5Ah 3200mA /14V 11.6Ah 2700mA
- **Brakes-** Hydraulic Disc 203FT/180mm rotor
- **Belt Drive-** Carbon Fiber (Gearing Option\*\*)
- **Tires-** eMG 20" x 4.0" e-Rated
- **Bar-** eMG 660mm 45mm Rise, 9° Sweep Back
- **INCLUDES-** Rear Light w/Brake, FT Headlight 450, Dual Leg Kickstand
- **OPTION-** Fenders & Front Rack








# FGR- CARGO Product Specification



	Frame	Fork	Headset	Handlebar	Stem	Grips	Saddle	Seat Clamp	
CARGO- Step Thru- 3 Spd	Aluminum	Thru Axel-Aluminum	eMG- w/Internal Cable Routing- 1-1/8" to 1-1/2" sealed	ZOOM- 660mm Wide, 9° Sweep Back, 45mm Rise, Al, Blk	ZOOM- Aluminum, Black Ano, 25.4	eMG by Velo- Ergo, TPU, Locking w/Closed End, Black	eMG by Velo- Comfort Leather, CroMo Rails, 265x195mm, BLK	eMG by Zoom- Quick Release, Ø35.0*Ø33.8 Al, Black Ano	
CARGO- Step Thru- 1 Spd									
	Seat Post	Brakes	Crank Set	Bottom Bracket	Belt	Gearing	Pedals	Wheels	Tires / Tubes
FGR C3	eMG by Zoom-30.9mm, 400mm, Bonded Head, Al, Black Ano	eMG by Star Union (SU)- Hydraulic 4 piston, 3 finger, Ceramic Pad, Motor Cut-Off, 203mm FT/ 203mm RR Rotor	eMG- E53 w/BG6, 165mm, 4 Bolt, w/Chain Guard, Al, Blk	eMG Dual Sensor, Cadence & Torque Sensor, BBTS3PSD	eMG- Carbon/Rubber, 12mm	eMG-52Tx22T, 11mm, CroMo Chain Ring, Alloy Cog- OPTION 48T w/Belt	eMG-Platform, CroMoly spindle, Aluminum Body, 9/16" thread, Black	eMG, Front, THRU AXEL, 20", Stainless Steel Spokes Black, 36 hole, 13G- Front, 12G Rear	Wide Knobby/Semi Tread- ZC-H5176E, 20" x 4.0", E50 Rated, Anti Puncture, w/Reflective Side Walls, Black, SV Tubes
FGR C1						eMG-48Tx22T, 11mm, CroMo Chain Ring, Alloy Cog- OPTION 52T w/Belt			
	Motor	Controller	HMI / Display	Wiring Harness / CAM BUS	Throttle	Turn Signals	Battery	Charger	Key
FGR C3	eMG- 3spd CVT, 750W, 48V, 85nM, Rear Motor Drive	eMG by LISHUI, 25A, IPX6	eMG- K-DISP, KD686, 2" TFT, 5 PAS levels, IPX6	eMG- JULET, 2T5 Waterproof, wiring harness	eMG- SU- 300X, IPX5	eMG-SU- DK168, IPX5	48V/14.5Ah, 2900mA, 65 Cells, UART, battery connection plates	eMG- SVE, XVE126, 54.6V/2A, 120W	100 options, w/Master Key for Dealership
FGR C1	eMG-1Spd, 750W, 48V, 85nM, Rear Motor Drive					Option Upgrade	OPTIONAL- 2nd BATTERY, 48V/11.6Ah, EVE CELL, External Mount Behind Seat Tube, includes, wiring to controller		
	Light- Front	Light- Rear	Rack- Front	Rack- Rear	Kickstand	Fender Set	Reflector Set		
FGR C3	eMG- SU- QD470-4DC6-20V, 2W,IPX5, 450 lumens	eMG-SU- WD332-3, Brake Light w/Turn Signal, IPX5	OPTIONAL, eMG- 30lbs/13.5kg limit, Aluminium, Black	Installed, eMG- 65lbs/30kg weight limit, Aluminum, Black	eMG- Dual Arm 1 bolt, behind BB, Adjustable, Al, Black	eMG- Front & Rear, U-type holder, Fit Strut	Reflector Set- Front, Rear, and 2 Wheels		
FGR C1		eMG- SU- WD332-2, Brake Light, IPX5		Option Upgrade		OPTIONAL- eMg- FT& RR, U-type holder, Fit Strut			

Rider Weight Limit MAX is 375 lbs. ~ Evenly distributed weight with racks MAX is 470 lbs. ~ Weight Tow Capacity MAX is 250 lbs.

NOTE battery range and optimal efficiency is based on a total weight of 250 lbs. Added weight impact battery performance


## HIGHLIGHTS and NOTES

\*\*Gearing Option- The Opportunity to change from a 52, 50, 48, 46 Tooth Front Chain Ring OPTION- will include new belt



FGR- MOTO Product Specification

MSRP \$2249

		Frame	Fork	Headset	Handlebar	Stem	Grips	Saddle	Seat Clamp	
FGR M1	MOTO-1 Spd	Steel	eMG- ZOOM 89DH-20 Suspension- BOLT ON	eMG- 28.6X44X30mm, Aluminum	ZOOM- 680mm W,6° SB, 520mm R, Al, Blk	ZOOM-30mm, Black	eMG- GRIPS TPU	eMG-RX Length 460mm, Black	Direct Mount to Frame	
		Seat Post	Brakes	Crank Set	Bottom Bracket	Belt	Gearing	Pedals	Wheels	Tires / Tubes
FGR M1	FGR M1		Tektro- Mechanical- w/Motor Cut-Off, 180mm Rotor	eMG-EC33 w/BG6, 165mm, 4B, w/CG, Al, Blk	eMG Dual Sensor, Cadence & Torque Sensor, BBTS3PSD	eMG- Carbon/Rubber, 12mm	eMG-48Tx22T, 11mm, CroMo Chain Ring, Alloy Cog- OPTION 52T w/Belt	eMG-Plastic Platform, CrMo spindle, 9/16", Black	eMG, FT, Bolt Axel, 20", Stainless SS Spokes Black, 36 hole, 13G- FT, 12G RR, Bolt On	Wide Knobby/Semi Tread- ZC-H5176E, 20" x 4.0", E50, Anti Puncture, w/Reflective Side Walls, Black, SV Tubes
		Motor	Controller	HMI / Display	Wiring Harness / CAM BUS	Throttle	Turn Signals	Battery	Charger	Key
	FGR M1	eMG-1Spd, 750W, 48V, 85nM, Rear Motor Drive	eMG by LISHUI, 25A, IPX6	eMG- K-DISP326 LCD Color	eMG- JULET, 2T5 Waterproof, wiring harness	eMG-SU- 300X, 3 wire, IPX5	eMG- SU- DK168, 3 wire, IPX5	48V/14.5Ah, 2900mA, 65 Cells, UART, UL2271/2849, battery connection plates	eMG- SVE, XVE126, 54.6V/2A, 120W	100 options, w/Master Key for Dealership
		Light- Front	Light- Rear	Kickstand	Reflector Set					
	FGR M1	eMg-SU-F QD526-4, IPX5, w/HORN, 900L	eMg- SU- WD400, Brake Light w/Turn Signal, IPX4	eMg- 0mm, 2bolt, rear mount, Adjble, Al, Blk	Reflector Set- Front, Rear, and 2 Wheels					

Rider Weight Limit MAX is 325 lbs. ~ Weight Tow Capacity MAX is 125 lbs.  
NOTE battery range and optimal efficiency is based on a total weight of 250 lbs. Added weight impact battery performance



## OPEN CLASS II

### *Custom Programing–*

allowing you to adjust for market & rider  
comfort/performance

### KEY FEATURES

#### Ability to change between CLASS I ~ II ~ III

- CLASS II ~ Out of the BOX–20 mph PAS / 20 mph Throttle  
*or change to*
- 1. CLASS I– **REMOVE THROTTLE** w/No Programing or Error Code
- 2. CLASS III– Simple program update thru Display/HMI
  - Adjusting TOP SPEED up to 28 mph

#### CUSTOMER COMFORT SPEED & IMPACT on PAS

- With simple programing thru the Display / HMI
  - TOP Speed can be adjusted from 11–28 mph
    - 1 mph adjustment
    - Will Adjust each level of PAS
- This allows for true rider confidence & comfort



## LIFETIME WARRANTY– LIMITED

Frame & Fork (own fork)

### 3 YEAR WARRANTY ALL PARTS\*

Includes all electronic parts

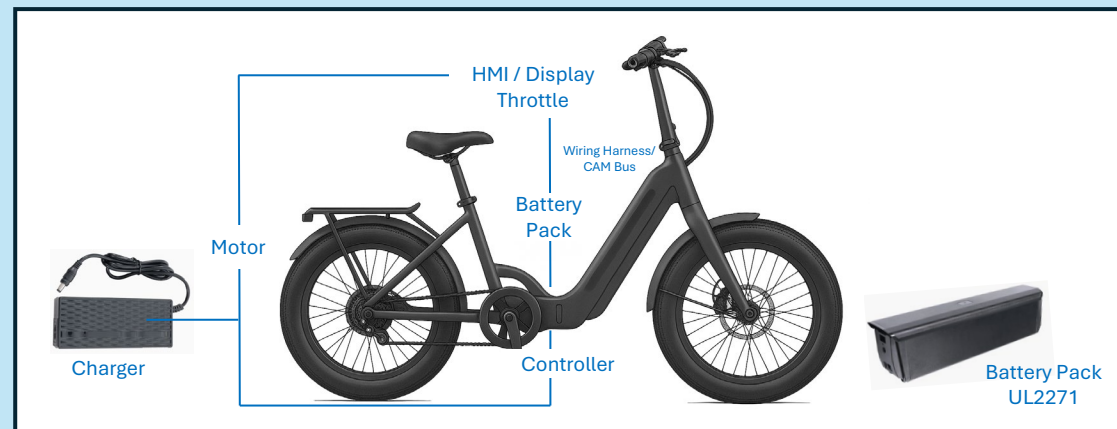
\*Excludes wear & tear parts  
(tires, tubes, brake pads, brake bleeds etc.)

### 5 YEAR COMMITMENT

on ALL UNIQUE PARTS AVAILABILITY from date of our  
last sale

This is designed to establish support, confidence, & availability of unique items  
like batteries, controllers, HMI/Displays, etc.

These replacement items will be “like or similar (and compatible)”



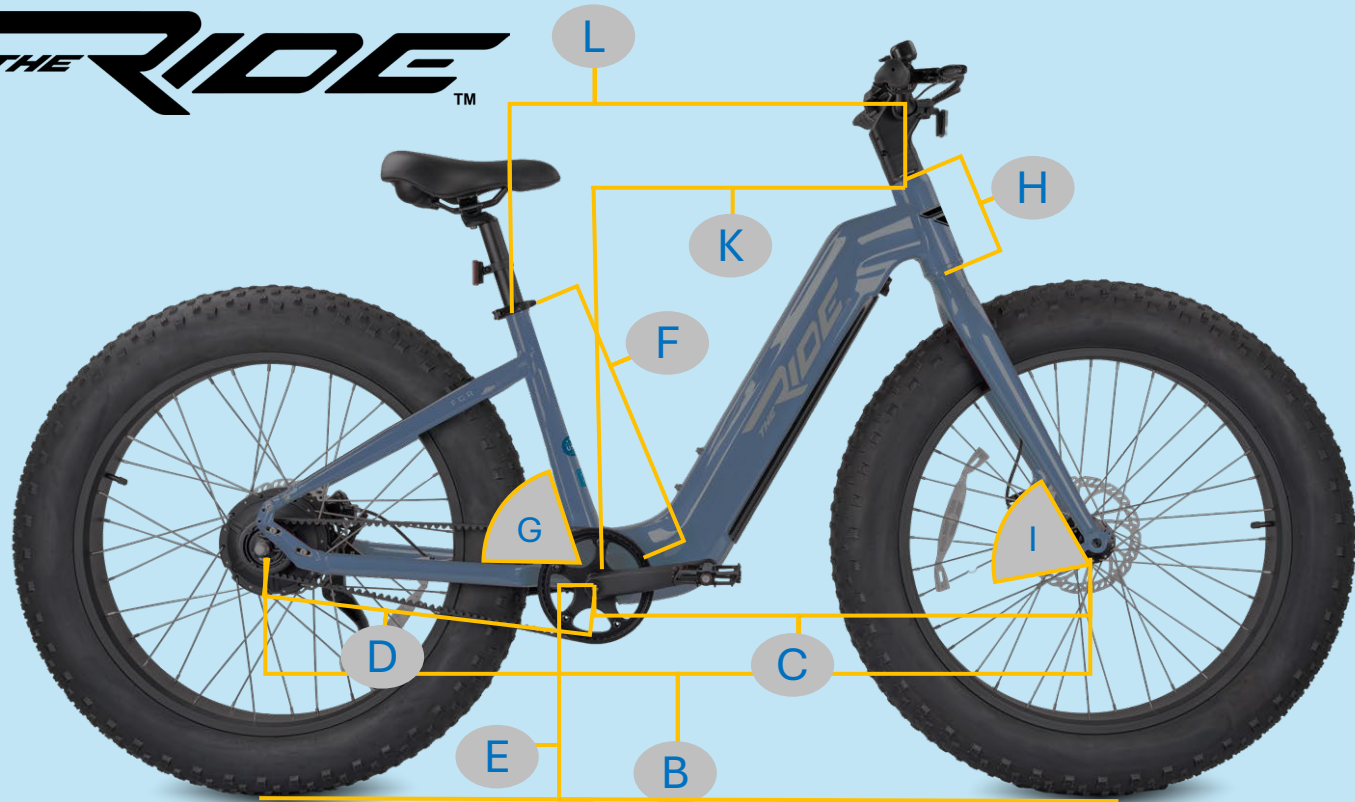
### UL 2849

Full holistic electrical system approach to safety  
of an eBike. Tests and Certification -covers

- **Battery cell • Battery pack • Battery charge**
- **Electric motor (e-motor) • Complete Electric bicycle (e-bike)**

### UL 2271

Battery Certification with  
testing, stability, charging and  
removable elements to ensure  
optimal system performance  
and safety



## ALL MODELS KEY SPEC

- OPEN CLASS II platform
- Belt Drive
  - Carbon Fiber
- TIRES
  - E-Rated with reinforced side wall & Flat Prevention Belt
- Seat Post
  - eMG Zoom 34.9mm 400mm
- Crank Arm Length
  - 165mm
- Grips
  - eMG Velo Ergo
- Saddle
  - eMG Velo Comfort
- Front Hub
  - Thru Axel
- Spokes
  - 12G RR/13G FT- SS
- Display/HMI
  - eMG Key Display w/APP
- CHARGER
  - Platform compatible on all units
- KEY OPTION
  - 100 Key Options for each Series– Master Key Option

The <b>RIDE</b> – FGR Series			CARGO	FAT	URBAN	FOLDING	MOTO
B	Wheelbase	mm	1213	1219	1219	1133	962
C	Front Center	mm	655	736	736	727	530
D	Chain Stay	mm	408	489	489	406	432
E	BB Height	mm	280	280	280	280	280
F	Seat Tube Length	mm	425	432	450	390	
G	Seat Tube Angle	deg	67	73	68	73	70
H	Head Tube Length	mm	185	140	140	160	140
I	Head Tube Angle	deg	69	68	68	69	69
K	Frame Reach	mm	606	466	476	491	500
L	Effective TT Length	mm	654	650	652	645	







# THE **TRIDE**™

eBliss Global Inc.  
dBA **as eBliss Mobility Group (eMG)**

W 6<sup>th</sup> Street Suite 600 #533  
Austin Texas 78703

Phone **888-341-6450**

eMail- [sales@TheRideBikes.com](mailto:sales@TheRideBikes.com)

[www.theridebikes.com](http://www.theridebikes.com)

