



Curated for the Dealership Community & Sales Team- NOT TO BE SHARED



2025-2026



PRODUCT HIGHLIGHTS



"A Community Built to Enjoy the Ride"

LINE UP

5 Styles~

9 Models

URBAN~

FOLDING~FAT

CARGO~MOTO

1 speed

&

3 speed CVT

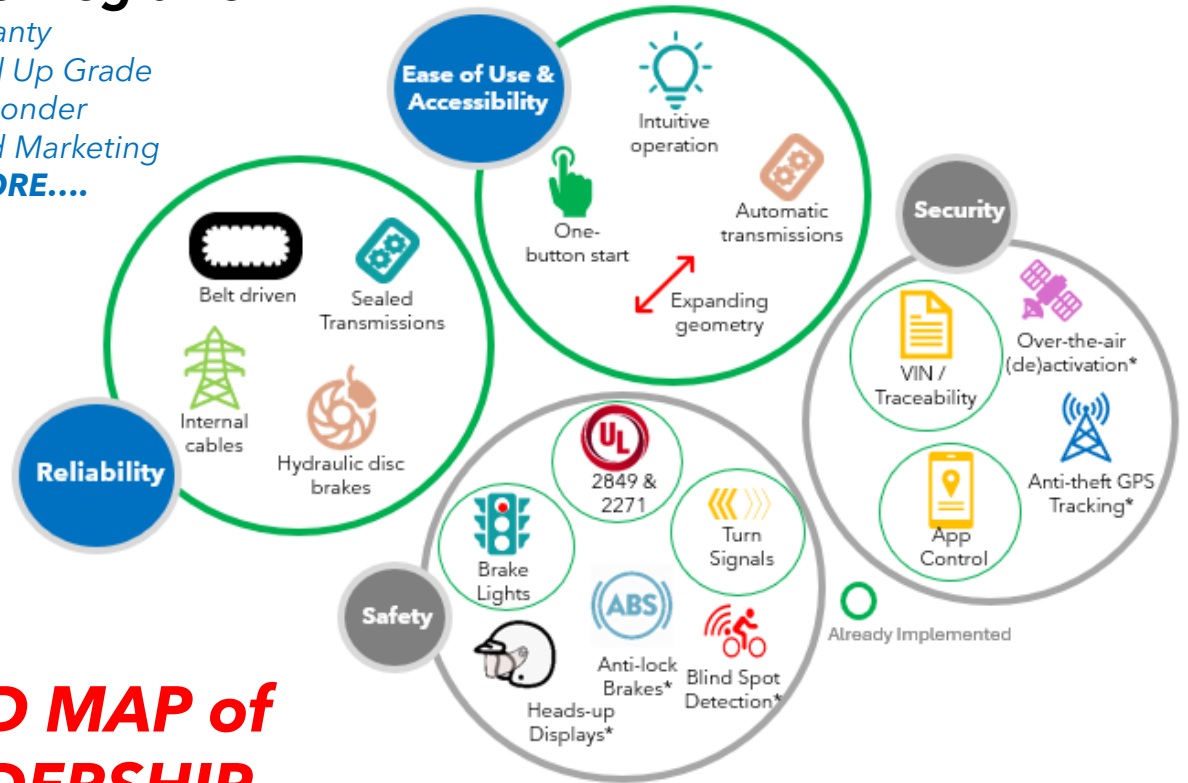
Product Platform ~
Extended Warranty
&MORE



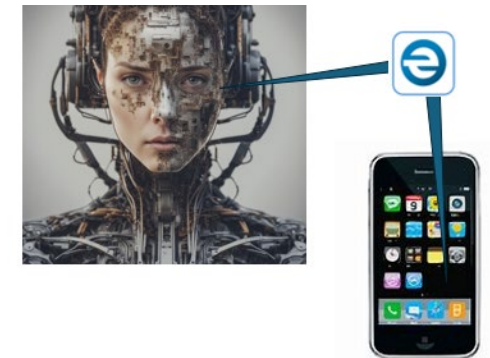
Best in Class Programs

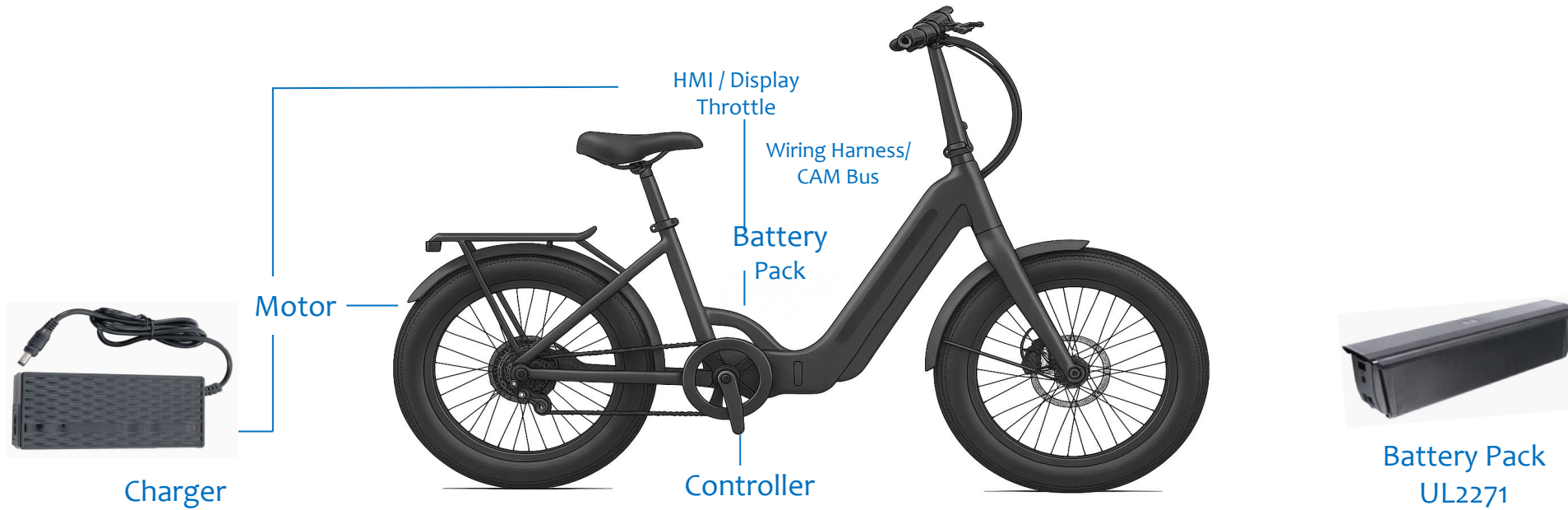
Warranty
Rider Stoked Up Grade
1st Responder
Dealer Based Marketing
and MORE....

LEADING with PRODUCT & INOVATION



**ROAD MAP of
LEADERSHIP**
PRODUCT,
SAFETY,
TECHNOLOGY
w/AI & APP integration





UL 2849

Full holistic electrical system approach to safety of an eBike. Tests and Certification -covers

- **Battery cell • Battery pack • Battery charge**
- **Electric motor (e-motor) •**
- Complete Electric bicycle (e-bike)**

UL 2271

Battery Certification with testing, stability, charging and removable elements to ensure optimal system performance and safety



FGR Series of eBikes by THE RIDE

What is FGR? *It's an attitude, a community,
& the performance of THE RIDE eBikes*

F = Fun ***G*** = Great ***R*** = Ride



Our Product Line is built on Platform DNA Technology

Leveraging

Innovation ~ Reliability ~ Ease of Use = **IRA DNA**

Community Design Features

Open Class System	Controller	Gear Ratio	Display / HMI	Wiring Harness / Cam Bus	Brakes	Tires	Seat Post
Class II- Set Up w/modification, Throttle Remove, All Bikes	1spd- All use the same unit	48x22 includes chain ring & belt, 165mm Crank	TFT 2" Display- All Bikes, 5 PAS Levels	All Bikes – Same Design Max In-Puts- Plug & Play Difference is length	Hydraulic- 203mm FT / 180 Rear- Full Serviceable	E-Rated, Flat Prevention, Reinforced Casing, Reflective Sidewalls	30.9mm- All Bikes
Programing Options	Either OR	Change To	Modify Plug & Play	Option	Option	Wheels	Seats / Grips
Update to Class I or Class III , Top Speed Adjustment & more- All Models	2spd- All use the same unit	52/22 includes chain ring & belt	3.5" TFT or 2" LCD	3" Wiring Harness Extension Kit- Allowing adjustments w/Bar & Stem	4 piston or 2 piston - Folding eBike uses cable actuated	12g-RR, 13g-FT Stainless Steel, Stressed Tested	Comfort Design- All Models

Additional Spec IRA DNA

- Model Cargo & FAT- Same Crank Design, Rim Profile
- Model Folding & Urban- Same Crank Design, Rim Profile
 - Model Fat & Urban- Same Battery Options
 - Model Cargo & Folding- Same Battery Options