

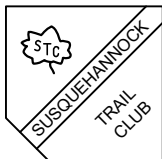
This map section is copied from the Susquehannock Trail System map provided by the PA DCNR.
 Digital copies of the entire map are available at <https://www.dcnr.pa.gov/StateForests/FindAForest/Susquehannock/Pages/Maps.aspx>
 Physical copies of the map are available from the BOF office at Denton Hill
 or may be requested at FD15@pa.gov or at Susquehannock District Office, 3150 East Second Street, Coudersport, PA 16915
 It is recommended that you carry a paper copy of the entire map and a compass with you on all hikes in the forest

Railroad Grade Trail Point to Point Hike

RRGT P-P 09/13/24

STS Maps v06.dwg

Railroad Grade, East Fork Trail and Switchback Trails



SUSQUEHANNOCK TRAIL CLUB

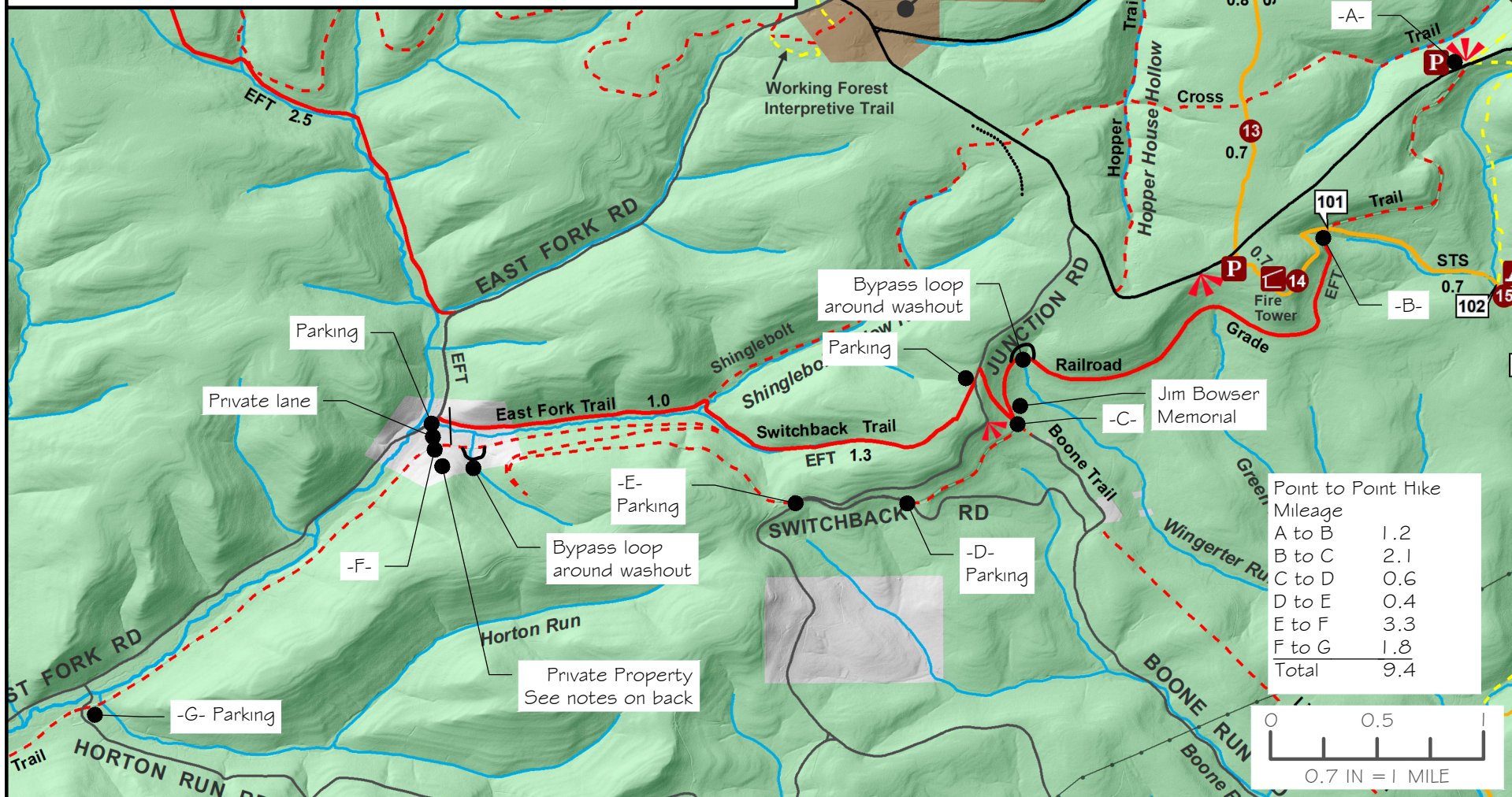
PO Box 643, Coudersport, PA 16915

www.stc-hike.org info@stc-hike.org

Cherry Springs State Park

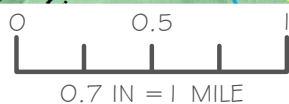


Working Forest
Interpretive Trail



Point to Point Hike

Mileage	
A to B	1.2
B to C	2.1
C to D	0.6
D to E	0.4
E to F	3.3
F to G	1.8
Total	9.4



Railroad Grade Trail Point to Point Hike

- Start at the Water Tank Vista parking area (-A-)
- Proceed southwest on the Railroad Grade Trail (RRGT)
- Cross the STS at (-B-)
- Continue southwest on the RRGT
- At the crossing of Wingertner Run either descend into the washout and back up to the trail, or, follow the washout bypass around the washout
- At (-C-) cross Boone Trail and take note of the Jim Bowser Memorial
- At (-D-) Follow Switchback Road west to (-E-) where the road switches back to the east and the RRGT continues on to the west
- Follow the RRGT to (-F-)
 - This is where the RRGT crosses private land
 - The owners of this land have not posted the land
 - PLEASE be respectful of this private land so that we may continue to hike across it.
 - The RRGT is washed out for a short distance here and there is a short bypass loop around the washout
 - There is a private lane that connects the RRGT to East Fork Road. This lane is not posted. If you use this lane be respectful of this property and it's owners.
 - If you see any of the property owners be polite and thank them for being allowed to cross the property
 - Continue on the southwest on the RRGT
- End at (-G-) parking area along Horton Run Road

SUSQUEHANNOCK TRAIL CLUB

PO Box 643, Coudersport, PA 16915

www.stc-hike.org info@stc-hike.org



RRG-PtoP 9/13/2024

STS Maps v06.dwg