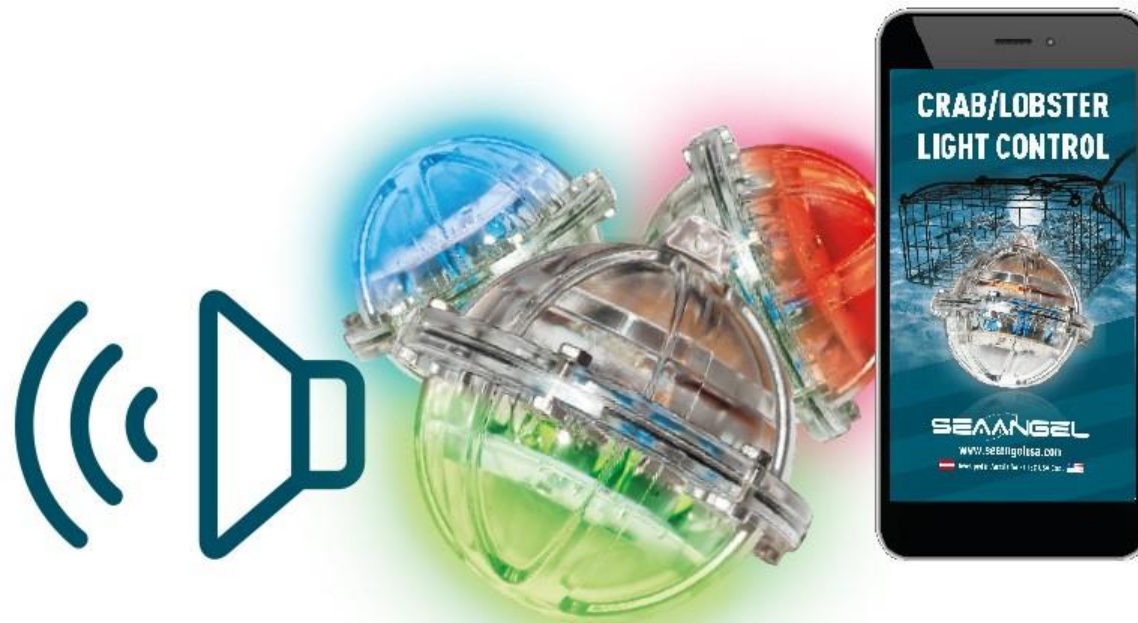


# SEATRACE



CRAB / FISH / BAIT light

## Study of Centre for Sustainable Aquatic Resources (CSAR) Fisheries and Marine Institute of Memorial University

- Light attracts snow crabs
- Increase CPUE
- Saves energy and time
- Positive impact to environment → less time on the ocean
- **Existing light**
  - Needs a battery change
  - Needs a seal change
  - Operation depth stops at a certain point
  - Light itself and ongoing battery replacement does not help the environment for a long run

# Development wishes and challenges

- A light for different species for different hunting seasons
- Changing the light colour
- Depth greater than the standard light = existing light
- Maybe sound included
- **No battery changes**
- Easy to use system
- Easy to program the light system

# SEATRACE 3000 = the facts



Dedicated fastening

Operation depth greater than 1000m

Inductive rechargeable  
(around 1000 x according to data sheet)



High tech plastic material

Colour change over the air

Colour intensity change over  
the over the air

Sound enabled

Special crab light with camera = Version 3100



# SEATRACE 3000 = what you need



SEATRACE 3000 (standard, advance or pro)

Double charger with 110 V / 220 V

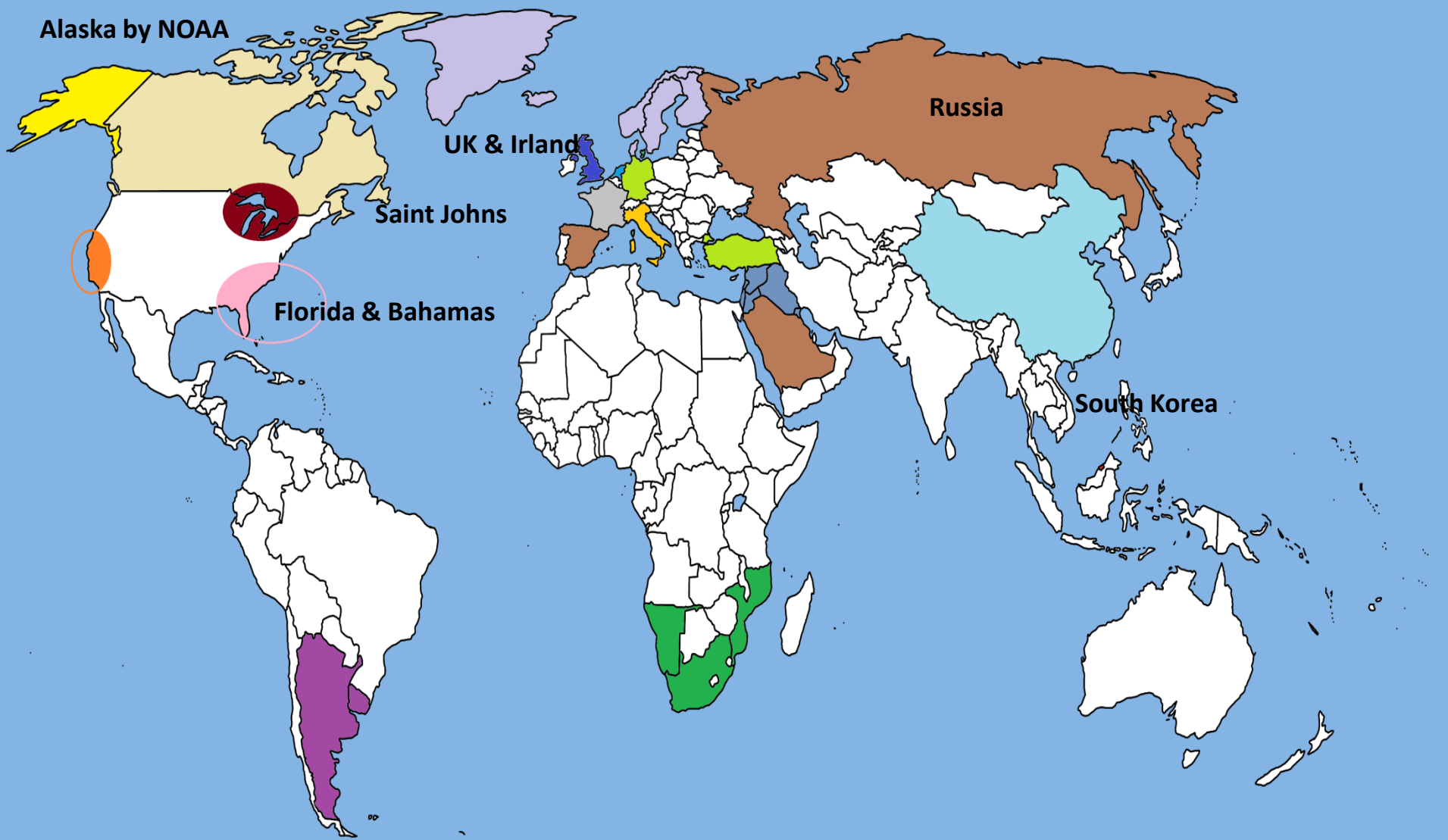


Software & programming cube  
(transfer data between cube  
software and light)

Magnet



# Testing of SEATRACE units



# First results for SEATRACE = SEATRACE 3000 standard



## Lower Florida Keys = **Stone crabs**

- This commercial fisherman is deploying approximately 5,000 plastic stone crab traps.
- He tested 15 lights.
- Using lights with no bait yielded as many or more crabs as using bait only.

# First results for SEATRACE = SEATRACE 3000 standard

SEANGEL

Trap 1 -Crab Light Only – No Bait



Trap 2 -Crab Light Only – No Bait





# First results for SEATRACE = SEATRACE 3000 standard

SEANGEL

Trap 3 -Crab Light Only – No Bait



Trap 4 -Crab Light With Bait



# First results for SEATRACE = SEATRACE 3000 standard

SEANGEL

Trap 5 -Crab Light Only – No Bait



## Wire Trap Test

- Four equally baited traps were set out in the same area Biscayne Bay, two with lights and two without. But one of the lights flooded so we ended up with 1 lighted trap to compare with 3 dark traps. The lighted trap held 5 large male stone crabs with 10 legal sized claws. Pic 1.

# First results for SEATRACE = SEATRACE 3000 standard

SEANGEL

Picture 1 Lighted trap



One of the non-lighted traps held two stone crabs with a total of 3 claws and the other two traps held 1 crab with 2 claws. Pic 2



# First results for SEATRACE = SEATRACE 3000 standard



## Conventional (Plastic) Stone Crab Traps

- Four traps were set out, two on either end of a 140 ft. line – one lighted and the other dark.

*Traps with lights: Total 30 claws.*

*Average per trap 10*

# First results for SEATRACE = SEATRACE 3000 standard

SEANGEL

*Traps with lights: Total 30 claws. Average per trap is 10 claws*



Light 1. 7 crabs - 10 claws



Light 2. 10 crabs – 17 claws



Light 3. 3 crabs - 5 claws

# First results for SEATRACE = SEATRACE 3000 standard

SEANGEL

*Traps dark: Total 7 claws. Average per trap 3.5*



Dark 1. 3 crabs 4 claws

# First results for SEATRACE = SEATRACE 3000 standard from Florida



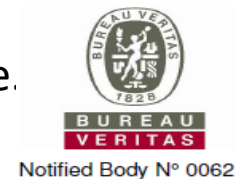




ISO 9001  
CERTIFICATION



Manpower: Over 50 specialists determined to keeping you safe.  
All Products approved & certified.



# Innovation award 2019

SEAANGEL





# Friedrich Trobolowitsch

Chairman of the Board, CEO

FT-TEC USA Corp.

1800 SW 1<sup>st</sup> Ave, Suite 507

Miami, FL 33129

Phone: +1 786 757 1090

Phone AT +43 664 5201595

Email: [ceo@ft-tec.com](mailto:ceo@ft-tec.com)

[usasales@ft-tec.com](mailto:usasales@ft-tec.com)

webpage: [www.seaangelusa.com](http://www.seaangelusa.com)

