



SERVO TURNTABLE PRINTER

FOR SCREEN PRINTING ON THE ROUND & OVAL & SPECIAL-SHAPED CONTAINERS & BOTTLES & JARS & CUPS...

GLASS

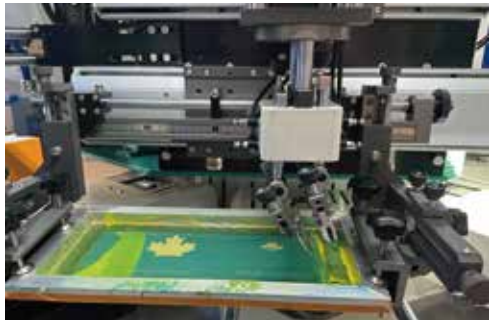


METAL



PLASTIC

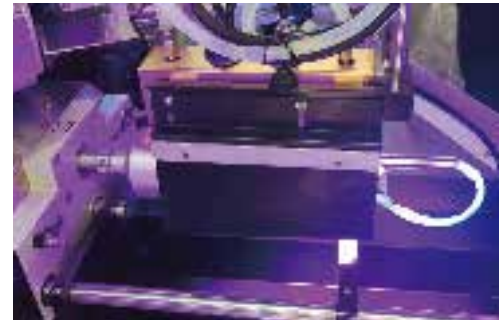




SCREEN PRINTING



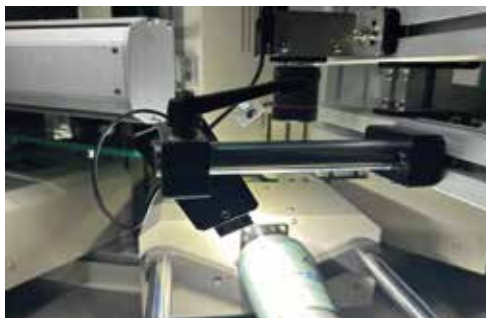
CONTROLLED BY IPAD



UV-LED+UV-LIGHT CURING



CCD FOR BOTTLE BOTTOM

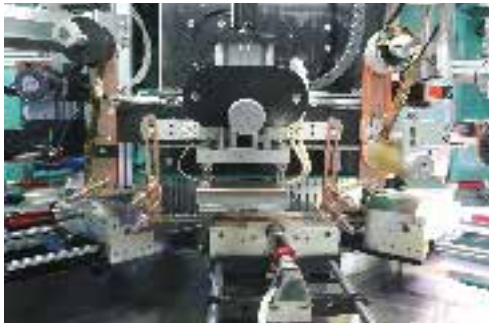


CCD FOR BOTTLE BODY

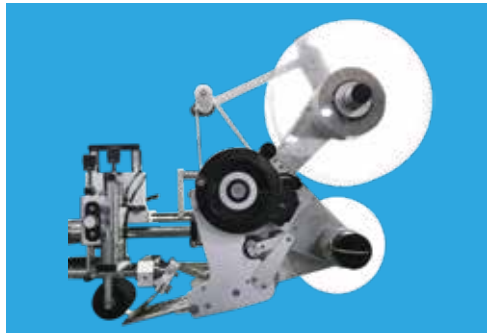


FLAME TREATMENT

OPTIONAL CONFIGURATION:



HOT STAMPING



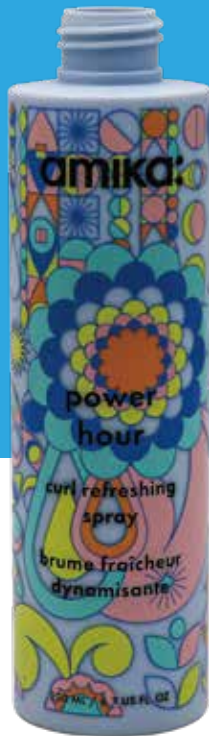
LABELLING



VISUAL INSPECTION FUNCTION

FEATURES AND BENEFITS:

- Computer numerical control;
- Servo motor-driven;
- 360° Printing on shaped profiles;
- Printing precision $\pm 0.004''$ / $\pm 0.1\text{mm}$;
- Compact sizes;
- Name brand components such as:
GOIZPER...APPLE...BECKHOFF
... SCHNEIDER...OMRON
...PANASONIC...SMC...



TECHNICAL PARAMETERS:

Machine Model	GIG-RSS208	GIG-RSS310	GIG-RSS412	GIG-RSS616
Work stations	8	10	12	16
Printing colors	2	3	4	6
360° Dia. of container	1/2"- 4" / 12-101mm			
Container height	1" – 12" / 25-304mm			
Printing length	12" / 304mm			
Printing height	10" / 254mm			
Output	Up to 60 Pcs/Min			
Gas pressure	1-2 Bar			
Air pressure	6-7 Bar			
Power	3p 220v 60Hz			



Canadian Manufacturing , North American Services !

GRAPHICS INTERNATIONAL GROUP®
GIG



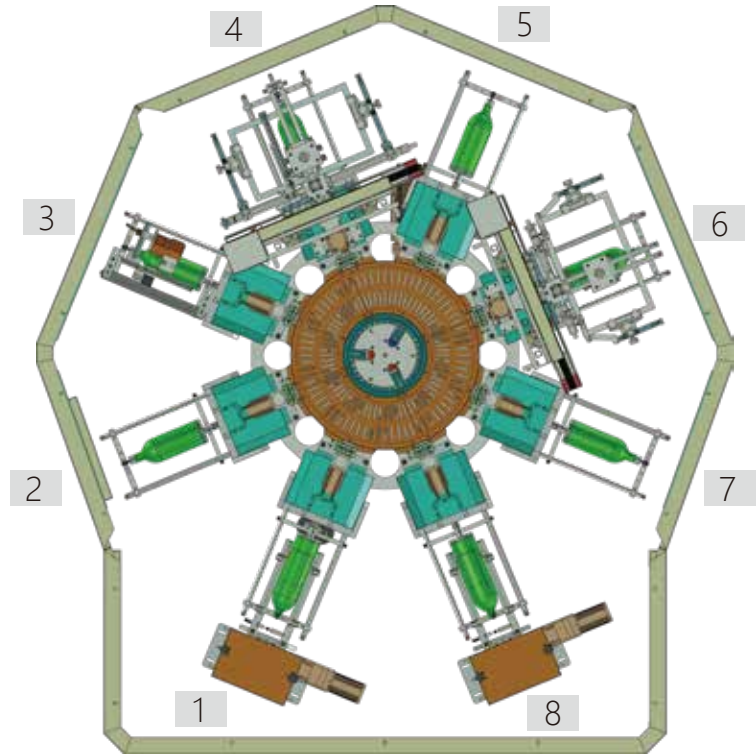
Graphics International Group INC.
Add: 707 Petrolia Road, Toronto, Ontario, Canada, M3J 2N6
www.graphics-ig.com
E-mail: sales@graphics-ig.com

GIG-RSS208

2-COLOR : 8 STATIONS

Work Stations:

- 1、 Feeding / CCD For Bottle Bottom
- 2、 Flame / Plasma
- 3、 CCD For Bottle Body
- 4、 Print 1
- 5、 UV Curing (UV Light or UV Led or IR)
- 6、 Print 2
- 7、 Curing (UV Light or UV Led or IR)
- 8、 Inspection / Discharging

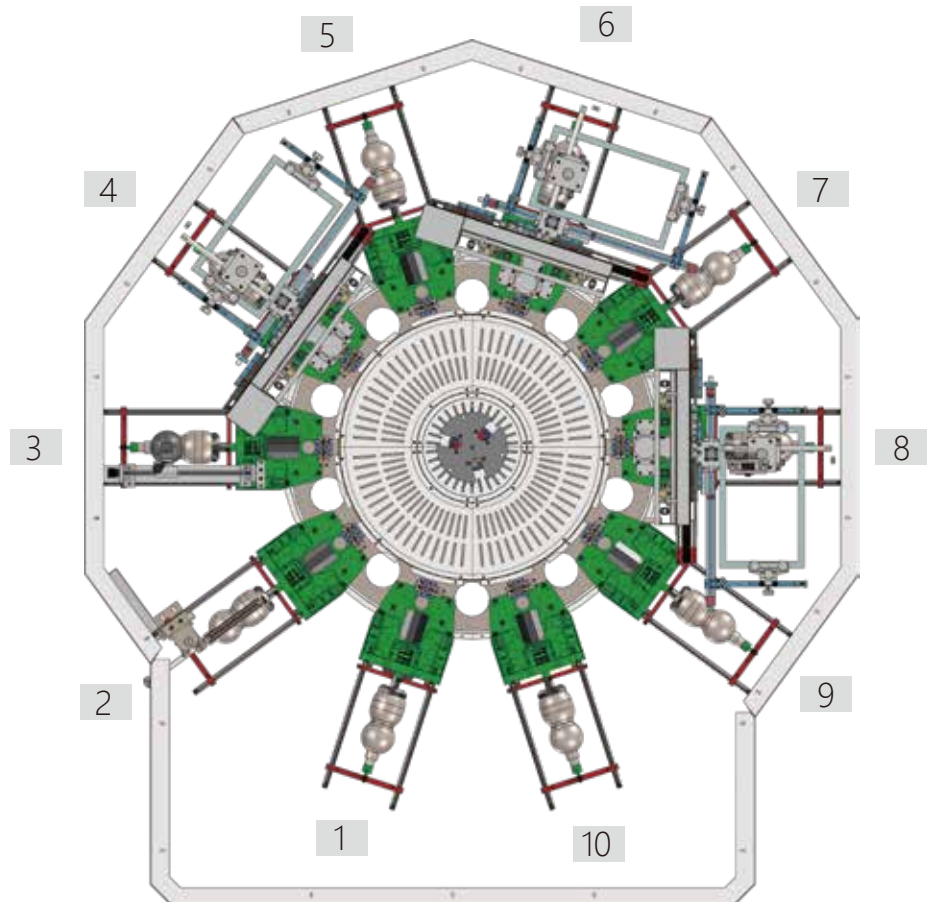


GIG-RSS310

3-COLOR : 10 STATIONS

Work Stations:

- 1、 Feeding / CCD For Bottle Bottom
- 2、 Flame / Plasma
- 3、 CCD For Bottle Body
- 4、 Print 1
- 5、 Curing (UV Light or UV Led or IR)
- 6、 Print 2
- 7、 Curing (UV Light or UV Led or IR)
- 8、 Print 3
- 9、 Curing (UV Light or UV Led or IR)
- 10、 Inspection / Discharging

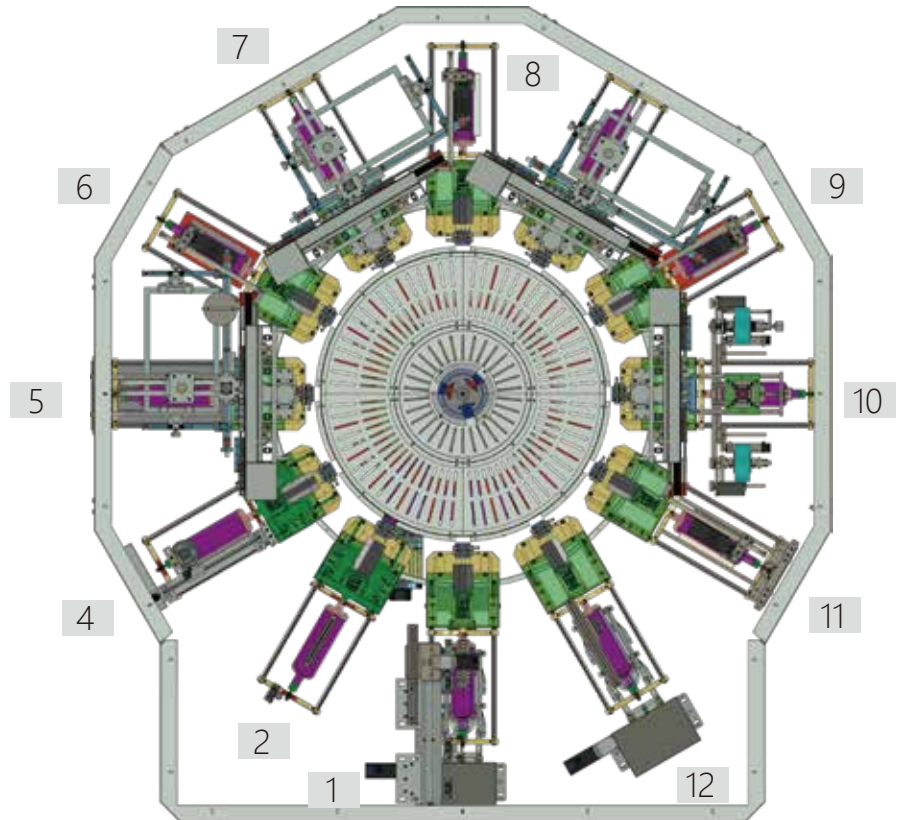


GIG-RSS412

4-COLOR : 12 STATIONS

Work Stations:

- 1、 Feeding / CCD For Bottle Bottom
- 2、 Flame / Plasma
- 3、 CCD For Bottle Body
- 4、 Print 1
- 5、 Curing (UV Light or UV Led or IR)
- 6、 Print 2
- 7、 Curing (UV Light or UV Led or IR)
- 8、 Print 3
- 9、 Curing (UV Light or UV Led or IR)
- 10、 Print 4
- 11、 Curing (UV Light or UV Led or IR)
- 12、 Inspection / Discharging



GIG-RSS616

6-COLOR : 16 STATIONS

Work Stations:

- 1、 Feeding / CCD For Bottle Bottom
- 2、 Flame / Plasma
- 3、 CCD For Bottle Body
- 4、 Print 1
- 5、 Curing (UV Light or UV Led or IR)
- 6、 Print 2
- 7、 Curing (UV Light or UV Led or IR)
- 8、 Print 3
- 9、 Curing (UV Light or UV Led or IR)
- 10、 Print 4
- 11、 Curing (UV Light or UV Led or IR)
- 12、 Print 5
- 13、 Curing (UV Light or UV Led or IR)
- 14、 Print 6
- 15、 Curing (UV Light or UV Led or IR)
- 16、 Inspection / Discharging

