



# HOPPENINGS

FPPOA NEWSLETTER

SUMMER 2024

A vibrant summer-themed graphic. The word "HAPPY" is in bold, black, uppercase letters, and "Summer" is in a large, white, cursive font. The background is a mix of pink and yellow. There are illustrations of a pineapple, a slice of watermelon, a slice of lemon, and a whole lemon. The text "March 2024 Membership Meeting" is written in a black, cursive font. Below it, the text "Thank you for coming! We had a great turnout again this year!" is written in a bold, black, sans-serif font. At the bottom, there is a paragraph of text in a black, sans-serif font.

**HAPPY**  
*Summer*

*March 2024*  
*Membership Meeting*

**Thank you for coming!**  
**We had a great turnout**  
**again this year!**

Both the WCID and FPPOA will be meeting on August 17 at the Community Center. While these are not membership meetings, anyone is welcome to attend. In light of all the recent and projected work on the lake and dam, you can take this opportunity to stay informed. It is also an opportunity to see how these boards operate and consider taking your turn as a volunteer. Positions become available every March and participation from around the lake is vital to our success. Check the websites for times and agenda.

## INSIDE THE ISSUE

- March 16th Membership Meeting Thank You
- WCID Dam Repair Day Report
- West End Vegetation Control Project
- Leave it to the Beavers
- Hurricane Season is Here
- Hurricane Beryl on Frog Pond
- Member Access Lot Cleanup Work Day

## EVENTS

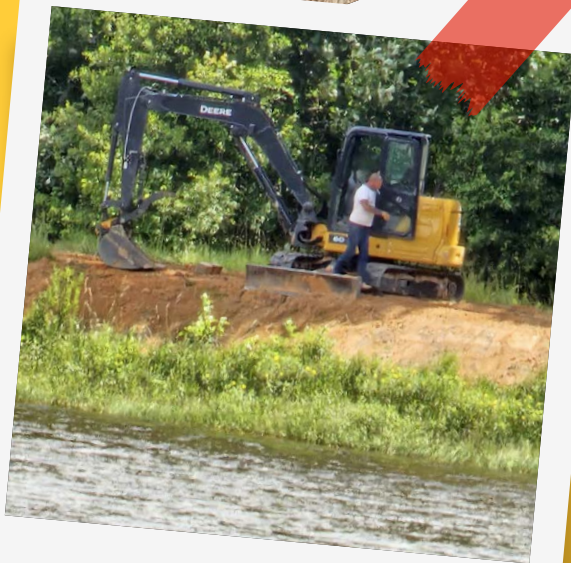
- WCID and 3rd Quarter FPPOA Executive Board Meeting August 17, 2024 at the Colmesneil Community Center

# WCID Dam Repair

June 29-2024

The WCID board contracted the dam improvements proposed by the engineering firm back in 2019. The one area to build up was around the low flow pipe. The area around the low flow pipe had the largest slope and was the narrow part on the top of the dam.

The WCID board received quotes from SRB in Colmesneil, TX and Kirkpatrick in Woodville, TX. The board evaluated both bids and the contract was awarded to SRB. SRB proposed built a rock wall



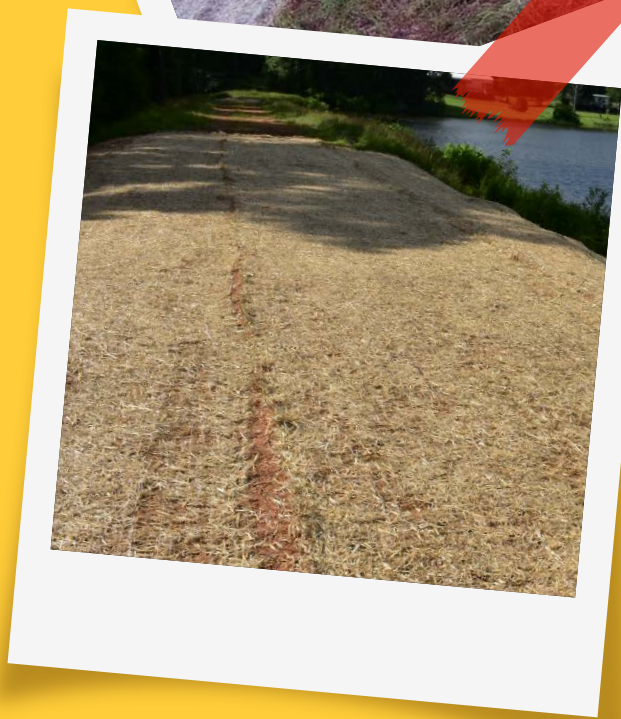
above the low flow pipe and then added dirt above it. The rock wall will hold the dirt better than just adding dirt and packing it down. SRB also built up the low area close to the spillway. That low area was due to erosion and needed to be repaired. The board decided to go ahead with building up the low area as well.

Download the full report below.

[WCID Report](#) 

## Thank you Volunteers!

Cris Thompson, Greg Thompson, Greg Askew, Britt Eisenring, Buck Johnson and Tool!



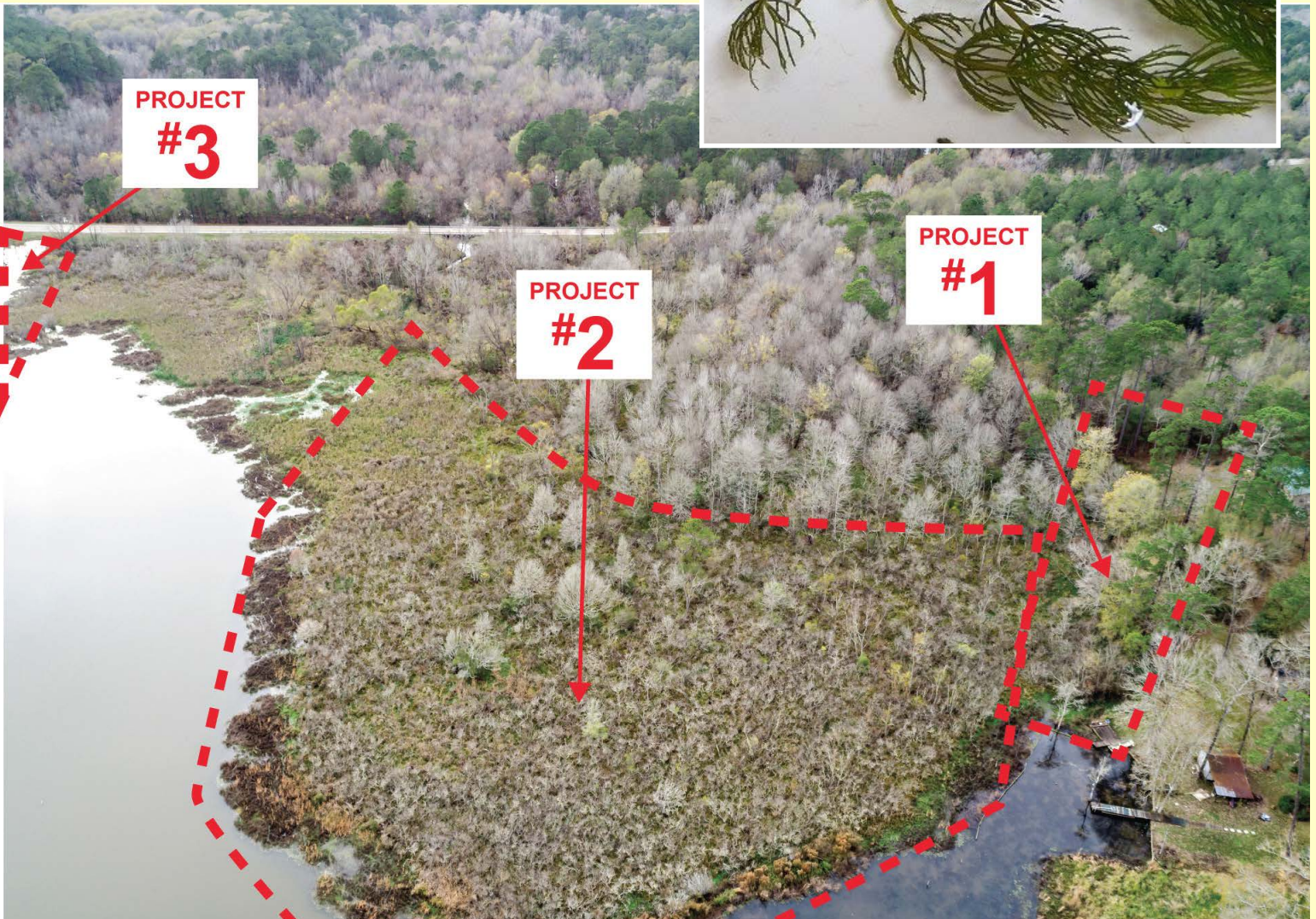
# West End Vegetation Control Project is ready to begin!

**Thanks to our members for their generous donations, we now have the funds to begin Project #1**

The FPPOA has hired Aquatech (Phillip Spearman) to tackle this endeavor. He is scheduled to begin working during the 2nd or 3rd week of July. They will be removing some willow trees as well as other vegetation to open up the strong deep current of the original entry of Wolf Creek. This project is estimated to take 3 days at the cost of \$1,300 per day. Maintenance after removal involves muck pellets which will be purchased by the FPPOA using donations from this project.

We have the chemicals and are still planning to spray the lake for submerged and floating

weeds. We have not seen this much Coontail (Hornwort) since 2009! This will take volunteers, a pontoon boat, sunny conditions with no wind, and cannot be done on a weekend. If you are interested, please contact the FPPOA via email at [frogpondfppoa@gmail.com](mailto:frogpondfppoa@gmail.com).



# Leave it to the Beavers!

## Beavers can cause damage to ponds and trees

Beaver dams can be detrimental to a pond area. They are highly skilled at sensing water movement and will try to clog up any such place. This can lead to the following issues:

The clogging of risers, which will cause the pond to maintain an above-normal water level which will damage it.

The clogging of risers and pipes, which significantly increases the risk of flooding

The burrowing into banks, which causes shoreline erosion and can lead to embankment collapse

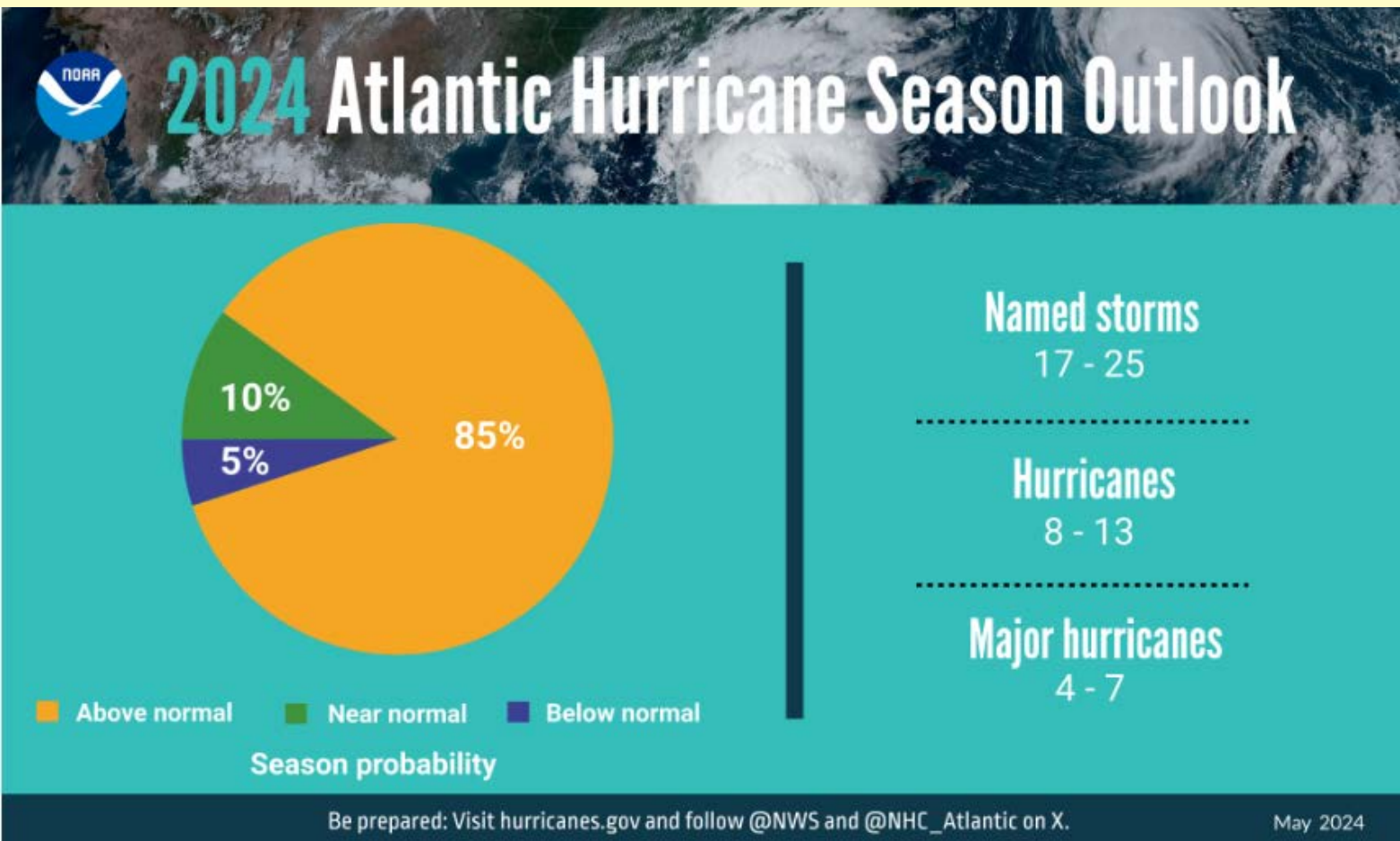
The destruction of trees, some of which may fall into the pond and cause further clogging issues.

We have spoken to State Trapper Greg Ashabranner. He works M-F and charges \$250 for unlimited beavers.



To make this happen we need volunteers with waders and machetes to access the creek behind the bridge. The goal is to learn from him how to manage the beavers on our own going forward. Please contact us at [frogpondfppoa@gmail.com](mailto:frogpondfppoa@gmail.com) if you are interested in volunteering.

In 2014, with the help of volunteers, we eradicated the beavers and broke down or blew up multiple dams and dens. They have been un-tended to since.



# Hurricane Season is here!

## NOAA predicts above-normal 2024 Atlantic hurricane season

Hurricane season runs June 1 to November 30 every year. Hurricanes can bring severe winds, heavy rainfall, storm surge, coastal and inland flooding, rip currents, tornadoes, and even landslides. Warmer-than-average ocean temperatures are major drivers of tropical activity. NOAA National Weather Service forecasters at the [Climate Prediction Center](#) predict above-normal hurricane activity in the Atlantic basin this year.

NOAA is forecasting a range of 17 to 25 total named storms (winds of 39 mph or higher). Of those, 8 to 13 are forecast to become hurricanes (winds of 74 mph or higher), including 4 to 7 major hurricanes (category 3, 4 or 5; with winds of 111 mph or higher). Forecasters have a 70% confidence in these ranges.

The upcoming Atlantic hurricane season is expected to have above-normal activity due to a confluence of factors, including near-record warm ocean temperatures in the Atlantic Ocean, development of La Nina conditions in the Pacific, reduced Atlantic trade winds and less wind shear, all of which tend to favor tropical storm formation.

### Get Ready

Before hurricane season begins June 1 every year, prepare for storms by finding your evacuation zone, deciding where to shelter, building your disaster supply kit, and strengthening your home (DO NOT tape your windows).

### Build a Kit

After an emergency, you may need to survive on your own for several days. Being prepared means having your own food, water, medications and other supplies to last for several days. A disaster supplies kit is a collection of basic items your household may need in the event of an emergency.

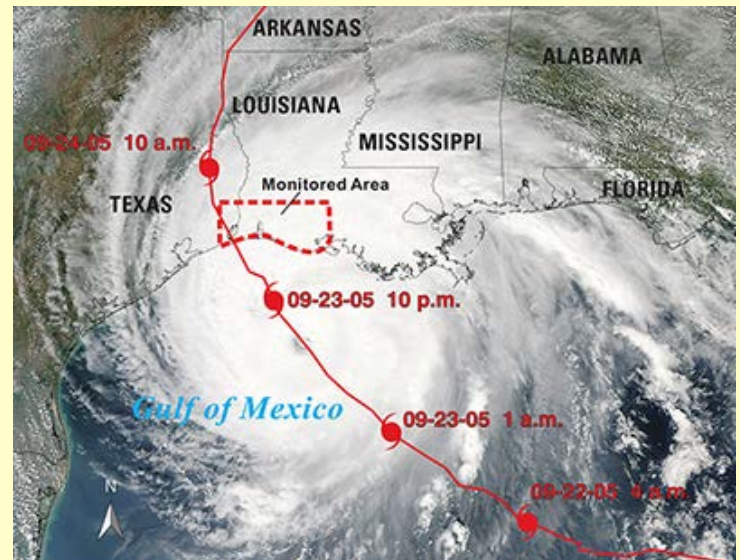
**Be Prepared!** Visit [Hurricanes.gov](https://www.hurricanes.gov)

## Hurricane Rita on Frog Pond

When Hurricane Rita churned toward Southeast Texas in September 2005, millions of people fled the region in one of the largest evacuations in U.S. history. Many people evacuated up to their weekend places at Frog Pond and Lake Amanda only to have the hurricane turn during the night and head towards the lakes area.

Rita spawned tornadoes from the north side of Frog Pond lake which crossed the open water and took out swaths of huge trees on the south side. Full time residents of Frog Pond went door to door to check on their neighbors. Trees had blocked the road, crushed houses, and knocked one home off of its pier and beam foundation. Colmesneil was out of power for weeks.

Colmesneil School has, in the past, opened their doors to residents as an evacuation center. If you do not want to evacuate very far, or do not have the means to travel far, this is a good option.



Make sure your motor vehicles stay full of fuel and your emergency kit is stocked. Download a printable version below to take with you to the store. Once you take a look at the basic items consider what unique needs your family might have, such as supplies for pets or seniors.

[Emergency Supply List](#)



# Hurricane Beryl on Frog Pond

## Hurricane Beryl impacts Frog Pond on July 8th, 2024

After Hurricane Beryl slammed into Texas early Monday, knocking out power to nearly 3 million homes and businesses, unleashing heavy rain and killing at least three people it moved east with heavy rains and spawned many tornadoes impacting our neighborhood. Downed trees and powerlines in several places along CR 3150. Thanks to our neighborhood "Road Heroes" we were not trapped in for very long!

Power was restored Wednesday evening.



# Member Access Lot Cleanup Weekend

**August 17-18th**

We are planning a work-weekend starting at 4:00pm after the WCID and FPPOA meetings. We are asking for the help of 6-7 volunteers!

There is a good bit of work needed on the Member's lot to make it usable again. If you've seen it you probably realize that the boat launch is blocked. If our weed guru needs to use it, we will need a different plan. There is a canoe sunk on the east side of the dock. This will need to be pulled out with a boat. Loy Owens is offering a chainsaw, tractor with a bucket, a place to put the debris, and a trailer.

If you are interested, please contact the FPPOA via email at [frogpondfppoa@gmail.com](mailto:frogpondfppoa@gmail.com). Thank you Loy Owens for your efforts to get this project going!!



The FPPOA is pleased to provide a Member Access area for those members that do not have water front property to access the lake. All Frog Pond property owners may use the lot to launch or remove their boats, but they must be docked at their private shoreline.

This lot is accessible to paying members ONLY. Use of Frog Pond Lake and the Member

Access lot is at your own risk. This includes immediate family and all guests of Members. Any and all guests must be accompanied by a FPPOA member when accessing the lot.

All board members now have a key to the Member Access Lot. If you need access, please give us 24 hour notice and send a request to [frogpondfppoa@gmail.com](mailto:frogpondfppoa@gmail.com).



**CR 3150**



# Frog Pond Lake

A Private Lake Community

PO Box 284  
Colmesneil, TX 75938



Distribution of this newsletter is intended to be sent digitally, however we have included a mail panel for those who would like to print and/or mail their own copies.