



# FRANKFORT COMMONS

MODERN LIVING IN FITCHBURG

50 FRANKFORT STREET  
FITCBURG MA 01420



## PROPERTY FEATURES

FITCHBURG'S NEWEST COMMUNITY OF 18 CONDOMINIUMS. PROVIDING OPTIONS OF ONE, TWO, OR THREE BEDROOM FLOOR PLANS. FLOORPLANS SCALE FROM 914 UP TO 1880 SQUARE FEET.



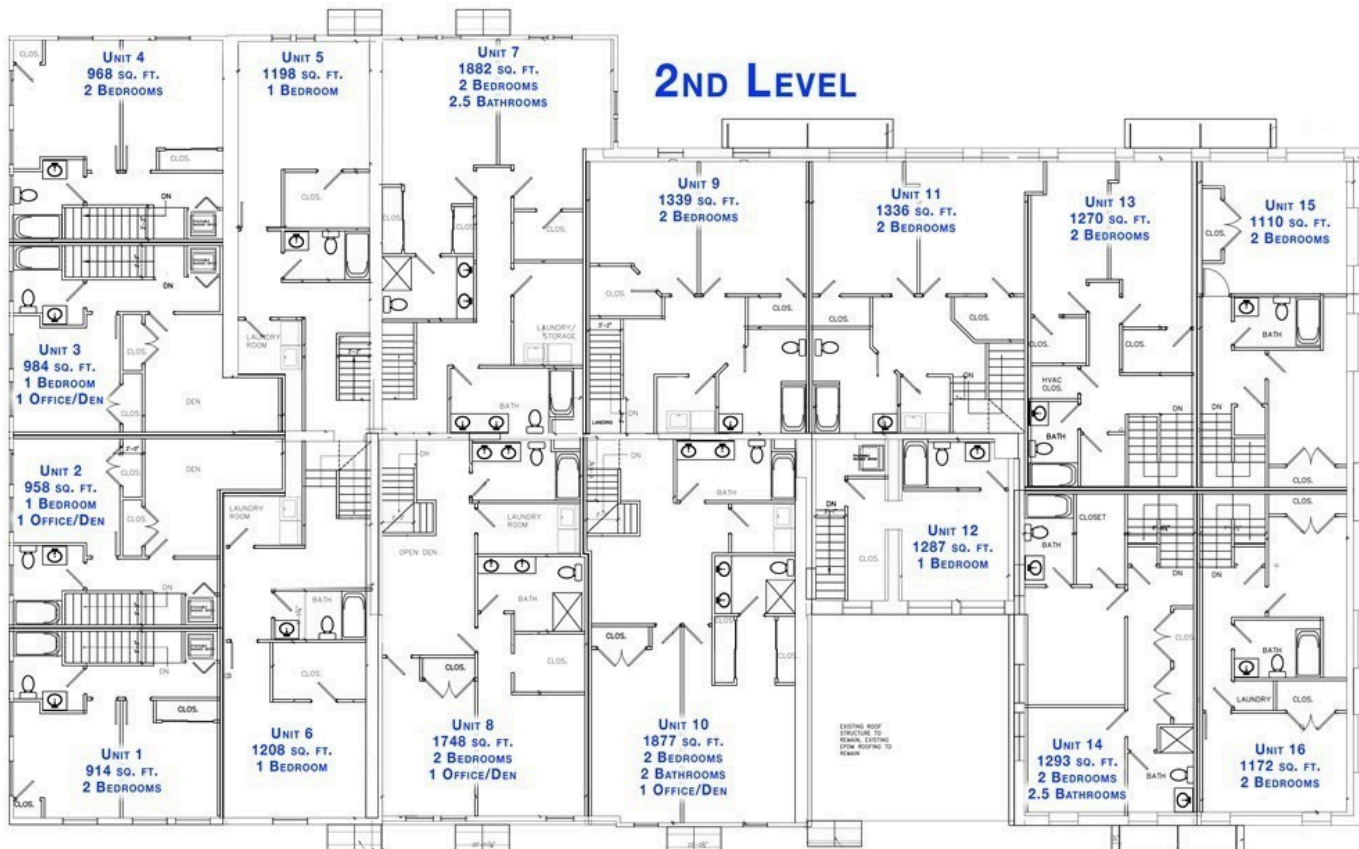
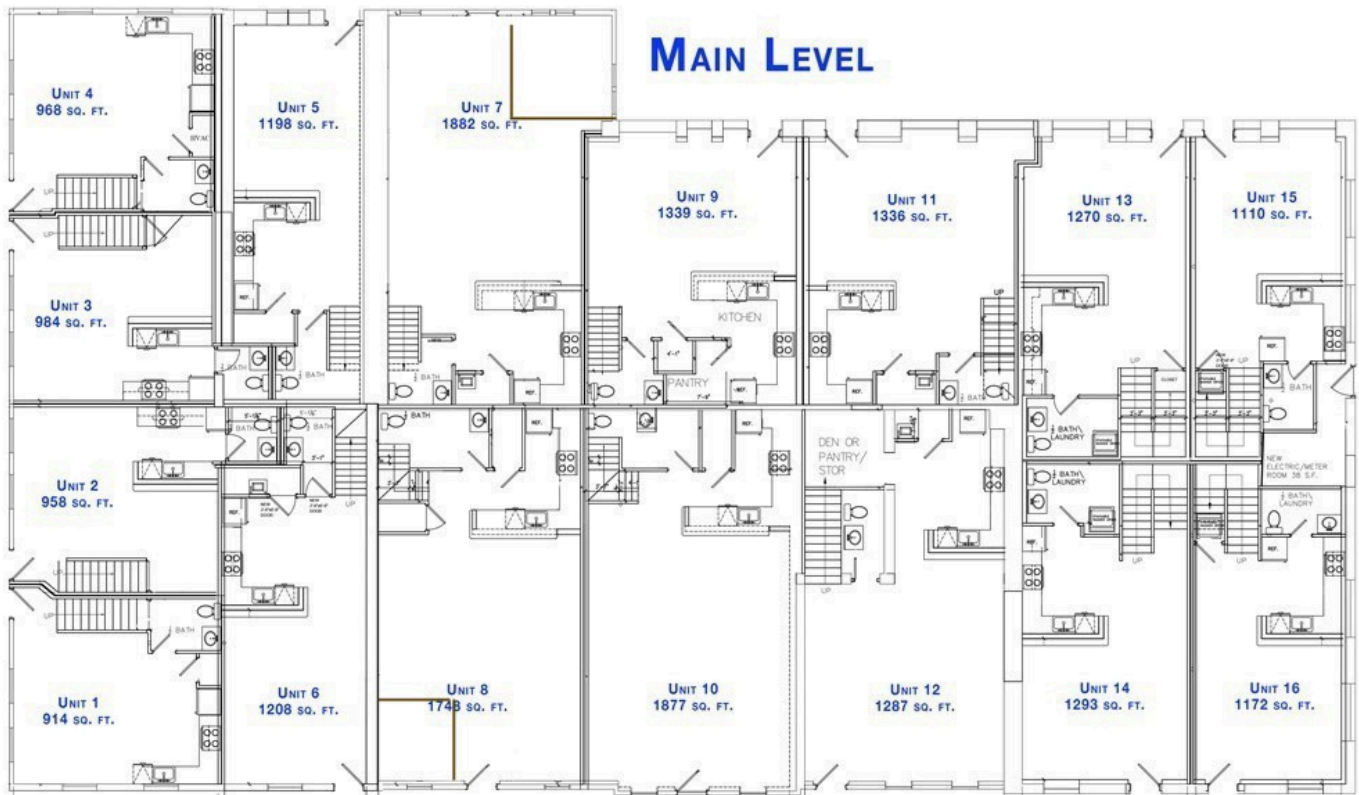
Donna Molet

📞 (508)783.5342

✉️ donnamolet@kw.com

🌐 frankfortcommons.com

# Floor Plans











## Property Characteristics

Be a commuter close to restaurants, shopping, the university, and the train station. Several schools in the town for ages PreK through Grade 12.

Small animals welcome, with plans for a dog park on the property. All newly renovated, modern kitchens with marbled white quartz counters, stainless steel appliances, and washer dryer hookup.



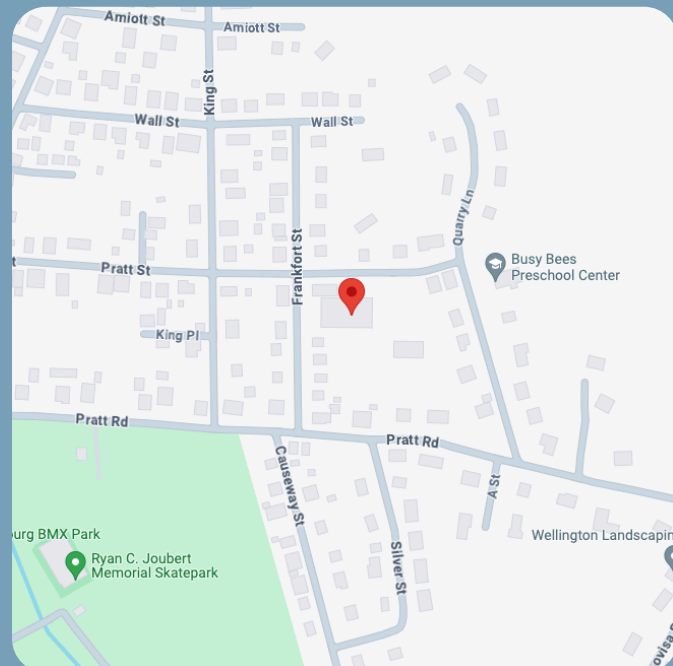
(508) 783.5342



DonnaMolet@kw.com



frankfortcommons.com



## ACCESS OUR WEBSITE

Please scan the QR code here and get more information on the Frankfort commons in Fitchburg