



PALM CANYON NEIGHBORHOOD WATCH

Compassion • Safety • Support • Community

The **Palm Canyon Neighborhood Watch** launched in early 2021 and is a nationally registered Neighborhood Watch program. It is a volunteer program that exists to support neighbors compassionately, assist residents in assessing safety concerns and help ensure that issues are communicated properly with professionalism, care and accuracy.

We are a community-driven, non-confrontational program built on trust, respect and connection. Everyone who lives in the Palm Canyon Mobile Club deserves to feel safe, supported and free from judgment or speculation.

THE ROLE OF NEIGHBORHOOD WATCH IN THE COMMUNITY

- Assess situations of potential safety concern
- Support residents in determining appropriate next steps
- Support security measures through accurate reporting and observation
- Share factual information with management and police liaisons when appropriate
- Maintain strong working relationships with the local police and fire departments, the city's disaster preparedness management team and Maxwell Security

Neighborhood Watch also maintains connections to local support services including The Mizell Center, LGBTQ Community Center of the Desert, local food banks, IHSS (In-Home Supportive Services) and utility assistance programs.

Neighborhood Watch is meant to be a supportive bridge, not a replacement for police, security or park management. Residents retain the freedom to go directly to the police, security or park management. Neighborhood Watch is simply an additional layer of support.

NEIGHBORHOOD WATCH LEADERSHIP

The Palm Canyon Neighborhood Watch is led by three **Deputies** and three **Backup Deputies**. The role of the deputies (and backup deputies) is to:

- Help assess safety concerns
- Complete observation notes as needed
- Communicate patterns or trends to management and police liaisons
- Participate in regular safety check-ins with management

Other residents are encouraged to join our **Core Neighborhood Watch Committee**. This is a volunteer group of neighbors who:

- Keep compassionate eyes and ears open
- Extend helping hands to neighbors
- Assist deputies as needed if available
- Support community connection and care

Our Neighborhood Watch program is a group effort!

mypcnc.com



PALM CANYON NEIGHBORHOOD WATCH

Compassion • Safety • Support • Community

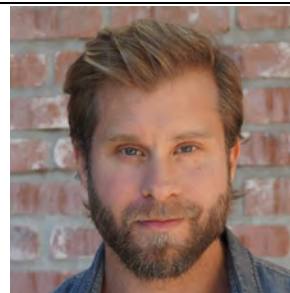
NEIGHBORHOOD WATCH DEPUTIES



ALISA ARNER
(619) 944-7072
alisaarner@gmail.com



BEX KILIG
(425) 512-1934
bexkilig@outlook.com



CRAIG RAMSAY
(917) 922-5266
craigramsayfitness@yahoo.com

NEIGHBORHOOD BACKUP DEPUTIES



LEE DUQUETTE
(801) 560-3128
Duquette5845@msn.com



MONIKA TAKALA
fireontheshore@verizon.net



MARK AUCHTERLONIE
(760) 969-2012

WHEN AND WHO DO I CALL?

- If you see an emergency situation: Call 911 immediately
- If you see suspicious activity during office hours:
Call Park Office: 760-327-2062
- If you see suspicious activity after hours:
Call Maxwell Security: 760-272-1212
- If there is no immediate threat to life or serious harm or doesn't require immediate police presence:
Call Police Non-Emergency: 760-327-1441
- If you would like help assessing a situation, contact one of the Neighborhood Watch deputies or backup deputies.
- If you contact the Police or Maxwell Security directly, please follow up with management AND a Neighborhood Watch deputy so the incident can be properly documented.

EMERGENCIES

911

PCMC OFFICE

760-327-2062

MAXWELL SECURITY

760-272-1212

POLICE NON-EMERGENCY

760-327-1441



NEIGHBORHOOD WATCH DEPUTY INFORMATION

NEIGHBORHOOD WATCH 101

The Neighborhood Watch program:

- ✗ Does not police neighbors
- ✗ Does not spy on residents
- ✗ Does not invade privacy
- ✗ Is not confrontational
- ✗ Is not judgmental

The Neighborhood Watch is firmly committed to:

- ✓ De-escalation
- ✓ Calm communication
- ✓ Compassion
- ✓ Professionalism
- ✓ Accurate, factual reporting only

All deputies and backup deputies commit to:

- Enrolling in CPR / CERT training
- Attending Palm Springs Police community meetings
- Maintaining relationships with management, security, police and fire department
- Ongoing education in emergency response and safety awareness
- Serving on the Palm Canyon Neighborhood Disaster Preparedness committee, which supports:
 - Emergency preparedness education
 - Family emergency data collection and distribution
 - Disaster communication planning
 - Community response coordination after an emergency