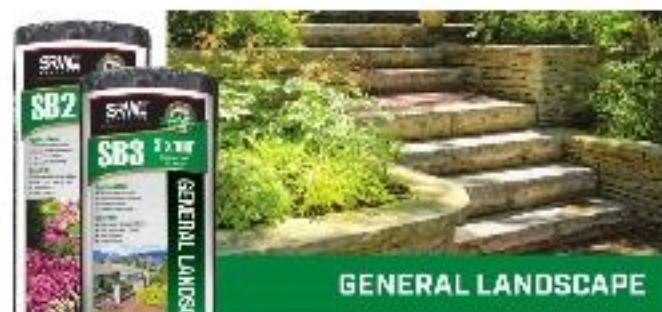


SRW Geotextiles: Quality You Can Trust

Spunbond

SRW Spunbond polypropylene geotextiles are commercial grade landscape fabrics with high puncture and tear resistance. Available in SB2 and SB3.



pg 42

Polyspun

SRW Polyspun polypropylene compressed and point-bonded fabric creates a strong and versatile weed barrier. Available in Residential, Contractor and Professional.



pg 43

Pro Plus & Ground Cover

SRW Pro Plus is both woven and non-woven polypropylene fabrics, needle-punched together with plant lines every 12 inches for easy plant alignment. Ground Cover is woven with plant lines.



pg 44

Woven

SRW Woven polypropylene geotextiles provide excellent puncture and tear resistant strength. SS5 is available in folded widths for your convenience. Permeable 350 and 356 are also available.



pg 45

Non-Woven

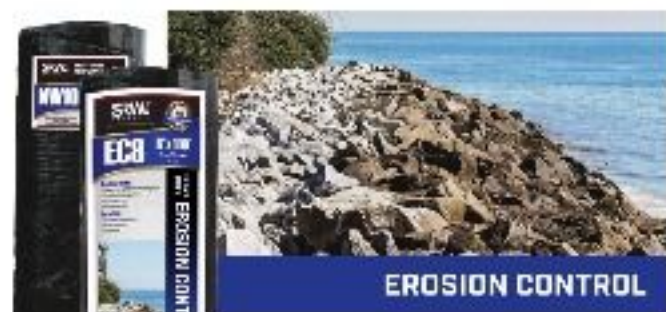
Allow high water flow and provide dimensional stability with SRW Non-Woven fabrics. They will not rot or mildew. Available in LS3, NW4, NW4.5 and NW6.



pg 46

Heavy Duty Non-Woven

SRW Non-Woven needle-punched polypropylene fabrics are non-biodegradable geotextiles. Available in NW7, E08, NW10, NW12 and NW16.



pg 47

General Landscape Fabric



Spunbond

SRW Spunbond polypropylene geotextiles are commercial grade landscape fabrics with high puncture and tear resistance. Spunbond geotextiles allow high water flow and excellent permittivity. Professional landscapers consider SRW Spunbond fabric to be a favorite due to its strength and versatility.

Benefits

- ▶ Excellent water flow/permittivity
- ▶ Easy to cut, easy to use
- ▶ Puncture and tear resistant
- ▶ Weed control

Applications

- ▶ Behind Retaining Walls
- ▶ French Drains/Drainfields
- ▶ Gardens/Planters
- ▶ General Landscaping



Don't forget the staples!
See page 74



LEARN MORE ONLINE
www.billy.com/SRWfabric



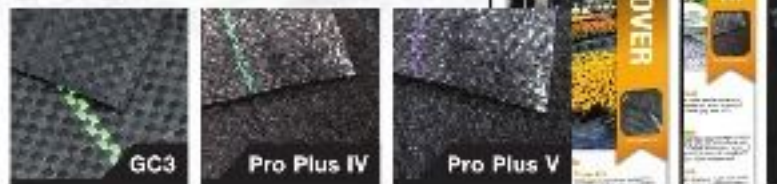
Learn more about SRW general landscape fabric and get spec sheets and instructions.

SB2 • 10 Year • 300' roll color coding green

PART #	SIZE	SQ YDS/ROLL	QUANTITY
FS22 03025	3'x25'	6.39	52/CTN
FS22 03050	3'x50'	6.57	34/CTN
FS22 03100	3'x100'	59.33	15/CTN
FS22 03300	3'x300'	160.00	30/PLT
FS22 04025	4'x25'	11.11	52/CTN
FS22 04050	4'x50'	22.22	34/CTN
FS22 04100	4'x100'	44.44	15/CTN
FS22 04300	4'x300'	133.33	30/PLT
FS22 06100	6'x100'	66.67	30/PLT
FS22 06300	6'x300'	200.00	30/PLT
FS22 12300	12'x300'	400.00	6/BNL

SB3 • 20 Year • 300' roll color coding yellow

PART #	SIZE	SQ YDS/ROLL	QUANTITY
FS33 03025	3'x25'	6.39	45/CTN
FS33 03050	3'x50'	6.57	24/CTN
FS33 03100	3'x100'	59.33	12/CTN
FS33 03300	3'x300'	160.00	30/PLT
FS33 04025	4'x25'	11.11	45/CTN
FS33 04050	4'x50'	22.22	24/CTN
FS33 04100	4'x100'	44.44	12/CTN
FS33 04300	4'x300'	133.33	30/PLT
FS33 06100	6'x100'	66.67	30/PLT
FS33 06300	6'x300'	200.00	30/PLT
FS33 08300	8'x300'	266.67	6/BNL
FS33 12300	12'x300'	400.00	6/BNL



Pro Plus & Ground Cover

SRW Pro Plus is a double-sided or "faced" geotextile made of both woven and non-woven polypropylene fabrics, needle-punched together with plant lines every 12" inches for easy plant alignment.

Benefits

- ▶ Strength of a woven, permeability of a non-woven
- ▶ Ground cover has highest UV protection
- ▶ Planting stripes make spacing quick and easy
- ▶ Retains moisture for plant health
- ▶ Weed control

Applications

- ▶ Soil/Landscape Stabilization
- ▶ Weed Barrier Under Landscape Beds, Gardens, Decks, Patios and Sidewalks



Path Stabilizer
See page 70



QUICK TIP:
Pro Plus Installation Tips

For best weed control, install this fabric with the fuzzy side facing the ground. For mulch stabilization install the fuzzy side up or for soil stabilization install fuzzy side down. Scan the QR code for a complete installation guide, or go to bit.ly.com/WWWinstruct



Pro Plus IV • 20 Year • Large roll color coding orange

PART #	SIZE	SQ YDS/ROLL	QUANTITY
PP1V 33025	3'x25'	8.33	30/CTN
PP1V 33050	3'x50'	16.67	15/CTN
PP1V 33100	3'x100'	33.33	8/CTN
PP1V 33250	3'x250'	83.33	20/PLT
PP1V 34050	4'x50'	22.22	15/CTN
PP1V 34100	4'x100'	44.44	8/CTN
PP1V 34200	4'x200'	111.11	20/PLT
PP1V 36100	6'x100'	66.67	30/PLT
PP1V 36250	6'x250'	166.66	20/PLT
PP1V 12200	12'x250'	333.33	4/BNCL

Pro Plus V • 25 Year • Large roll color coding blue

PART #	SIZE	SQ YDS/ROLL	QUANTITY
PP1V 33250	3'x250'	83.33	20/PLT
PP1V 34250	4'x250'	111.11	20/PLT
PP1V 35250	5'x250'	138.89	20/PLT
PP1V 36250	6'x250'	166.66	20/PLT
PP1V 38250	8'x250'	222.22	4/BNCL
PP1V 12250	12'x250'	333.33	4/BNCL

GC3 • Ground Cover • Colored Planting Stripes

PART #	SIZE	SQ YDS/ROLL	QUANTITY
GC3 08050	3'x50'	6.57	30/CTN
GC3 08100	3'x100'	33.33	15/CTN
GC3 08200	3'x200'	100.00	5/PLT
GC3 04300	4'x300'	33.33	30/PLT
GC3 06300	6'x300'	200.00	30/PLT
GC3 10300	10'x300'	333.33	3/BNCL
GC3 12300	12'x300'	400.00	3/BNCL
GC3 16300	16'x300'	600.00	3/BNCL



Woven

SRW Woven polypropylene geotextiles provide excellent puncture and tear resistant strength. SS5 is available in folded widths for your convenience.

Benefits

- Improves long term performance of projects
- Excellent puncture and tear resistance
- Reduces amount of base materials
- High strength and water flow
- SS6 meets DOT specs

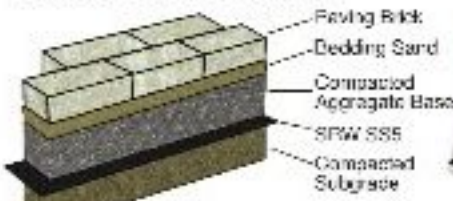
Applications

- Stabilize Standard and Permeable Paver Projects
- Base Reinforcement for Roads, Driveways and Sidewalks
- Structural Support for Retaining Wall Base



QUICK TIP:
Get Our Installation Guides!
www.srw.com/ss5enrdocx

Includes detailed diagrams!



Permeable 350



SS5



Permeable 350 • 350 lb • Monofilament Woven

PART #	SIZE	SQ YDS/ROLL	QUANTITY
PE350 09100	6' x 100'	66.67	30/PLT
PE350 09300	6' x 300'	200.00	90/PLT
PE350 12300	12' x 300'	400.00	3/ENCL

SS5 • 200 lb • Woven Silt Film • Folded

PART #	SIZE	SQ YDS/ROLL	QUANTITY
FSS5 125016	12.5' x 61'	77.72	140/CTN
FSS5 0125027	12.5' x 27'	33.50	8/CTN
FSS5 0125054	12.5' x 54'	70.00	30/PLT
FSS5 0125108	12.5' x 108'	140.00	30/PLT
FSS5 17500 5	17.5' x 61.5'	100.00	30/PLT
FSS5 175108	17.5' x 108'	200.00	16/PLT

SS5 • 200 lb • Woven Silt Film

PART #	SIZE	SQ YDS/ROLL	QUANTITY
FSS5 04050	4' x 50'	20.00	900/CTN
FSS5 04100	4' x 100'	40.00	11/CTN
FSS5 05050	5' x 50'	25.00	1
FSS5 05100	5' x 100'	50.00	30/ENCL-80/PLT

SS5 • 200 lb • Woven Silt Film

PART #	SIZE	SQ YDS/ROLL	QUANTITY
FCSS5 125432	12.5' x 432'	5400.00	3/ENCL
FCSS5 05300	15' x 300'	500.00	3/ENCL
FCSS5 175300	17.5' x 300'	525.00	3/ENCL

See SS6 on pg. 49



QUICK TIP:
Save Money and Gain Performance

SS5 and SS6 can save as much as 30% in base material and associated costs while improving long term performance by



Heavy Duty Erosion Control Non-Woven

SRW Non-Woven needle-punched polypropylene fabrics are non-biodegradable geotextiles produced by joining together 100% polypropylene staple fibers in a random network to form high-strength, dimensionally-stable fabrics.

Benefits

- ▶ Allows high water flow
- ▶ Soil separation for added stability
- ▶ High strength/dimensionally stable
- ▶ Prevents soil erosion
- ▶ Rot & mildew resistant

Applications

- ▶ Heavy Rip-Rap/Boulder Retaining Walls
- ▶ Stabilization/Separation
- ▶ Underlayment
- ▶ Erosion Control

NW7 • Heavy Duty Erosion Control Fabric

PART #	SIZE	SQ YDS/ROLL	QUANTITY
FCRW7 15300	10'x300'	300.00	3/ENCL

EC8 • Heavy Duty Erosion Control Fabric

PART #	SIZE	SQ YDS/ROLL	QUANTITY
FE08 06100	6'x100'	66.67	23/PLT
FE08 06300	6'x300'	200.00	94/1
FC08 125360	12.5'x360'	450.00	3/ENCL
FC08 15300	15'x300'	450.00	3/ENCL

NW10 • Heavy Duty Non-Woven

PART #	SIZE	SQ YDS/ROLL	QUANTITY
FCRW10 125360	12.5'x360'	450.00	3/ENCL
FCRW10 15300	15'x300'	450.00	3/ENCL

NW12 • Heavy Duty Non-Woven

PART #	SIZE	SQ YDS/ROLL	QUANTITY
FCRW12 125360	12.5'x360'	450.00	1
FCRW12 15300	15'x300'	450.00	1

NW16 • Heavy Duty Non-Woven

PART #	SIZE	SQ YDS/ROLL	QUANTITY
FCRW16 125360	12.5'x360'	450.00	1
FCRW16 15150	15'x150'	225.00	1
FCRW16 15300	15'x300'	450.00	1

GEOTEXTILE SPECIFICATIONS			NON-WOVEN FABRICS				WOVEN FABRICS	
PROPERTIES	TEST	UNITS	NW4	NW4.5	NW6	EC8	SS5	SS6
Weight (oz/sq yd)	D5251	oz/sq yd	4	4.5	6	8	4	6
Grab Tensile Strength	D4632	lbs	100	120	160	205	200	315
Grab Elongation	D4632	%	50	50	60	60	15	15
Trap-Tear Strength	D4638	lbs	45	50	60	80	75	120
CDF Puncture	D5211	lbs	270	370	410	525	700	900
Water Flow Rate	D4451	gpm/ft ²	140	120	110	90	5	4
Permeability	D4491	1/sec	2	1.0	1.6	1.4	.05	.05
UV Resistance (ASTM)	D4855	%	70	70	70	70	70	70
Apparent Opening Size	D4751	US Sieve	70	70	70	30	30	40

Specifications current at the time of printing. Call SRW Products 800 752 3326 for help files.