



## About Dawn Industries

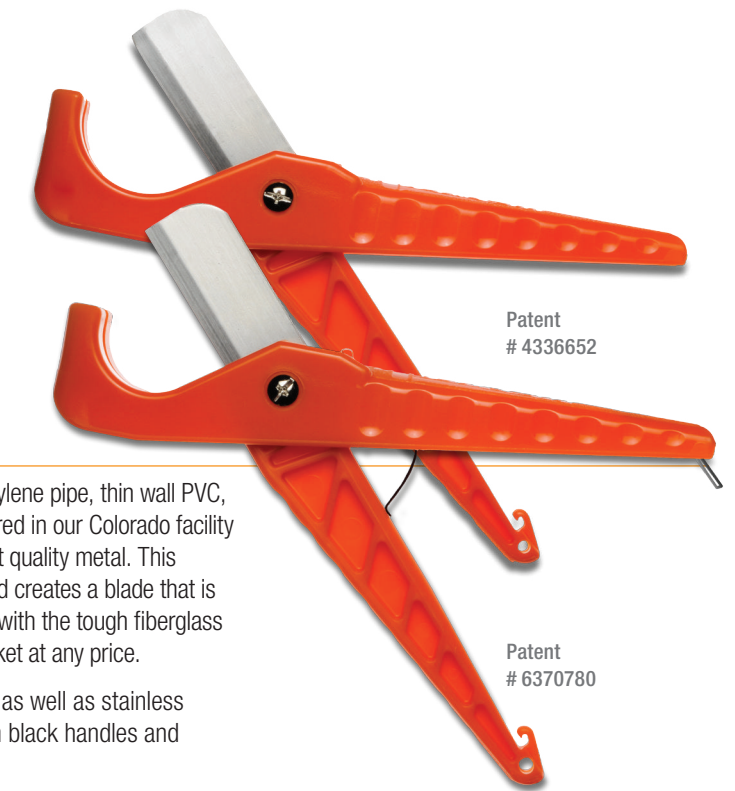
Saving water system professionals time and money is our mission. Over the past 30 years, Dawn Industries, Inc. has introduced some of the most innovative and successful water system and replacement products on the market. The Company's team of seasoned engineers, sales and office staff continue to work closely with professionals from multiple industries in developing new and innovative products.

What separates Dawn Industries is our commitment to pleasing our customer base. We're a business that treats our customers like family, with respect, courtesy and warmth. We recognize that you are our lifeblood, everything we do is focused on your satisfaction.

We appreciate your business and look forward to serving you for many years to come.



*The KwikCut is designed and manufactured in the USA to meet the high standards of the professional market.*



### Spring Action and Original KwikCut™

These multi-purpose cutters are designed to make quick work of Polyethylene pipe, thin wall PVC, hose, tubing and most other non-metal items. Our blades are manufactured in our Colorado facility using a proprietary blade making system from the longest lasting, highest quality metal. This ensures exceptional quality control throughout the production process and creates a blade that is sharper and holds its edge longer for more clean, precise cuts. Together with the tough fiberglass reinforced nylon handles KwikCut is the highest quality cutter on the market at any price.

100 and 135 series models are available with orange or black handles as well as stainless steel or PTFE coated blades. SS200 and SL200 are only available with black handles and stainless blades.

Part Number TXXX-X-XX Made in USA

KwikCut Model	Blade Size	Handle Color	Blade Type
T	XXX	X	XX
T   Standard	100   Cuts 1 1/4" OD 135   Cuts 1 5/8" OD	O   Orange Blank   Black	Blank   PTFE Coated SS   Stainless Steel

Example | T100 (Black KwikCut with a PTFE Coated Blade)

Part Number SLXXX-X-XX Made in USA

KwikCut Model	Blade Size	Handle Color	Blade Type
SL	SLXXX-X-XX	X	XX
SL   Spring Action	100   Cuts 1 1/4" OD 135   Cuts 1 5/8" OD	O   Orange Blank   Black	T   PTFE Coated SS   Stainless Steel

Example | SL100-0-T (Orange Spring Action KwikCut with a PTFE Coated Blade)

Part Number XX 200 Made in USA

KwikCut Model	Blade Size	Handle Color	Blade Type
XX	200		
T   Standard SL   Spring Action	200   Cuts 1 7/8" OD	Black	Stainless Steel



Patent # 8024864

### KwikCut™ Ratchet Cutter

Our patented Double Action Ratchet gives you plenty of extra power when cutting heavy walled pipe. Our precision milled blade provides a clean cut with little effort. Efficient one-hand operation has a push button release and locking mechanism. Cuts 1/8" to 1 5/8" OD. Made in the USA in our Colorado factory.

Part Number: R125 Made in USA

# KwikCut Tools™

Professional Quality



## Hand Saw

For cutting large PVC or ABS pipe, with optimum tooth design. No other saw cuts faster or straighter than KwikCut PVC Saw. Available in 9", 13" and 18" lengths.

Part Number: GS09F | GS13F | GS18F Made in USA



## Wire Stripper/Cutter

- Narrow nose fits into tight places
- Spring-loaded action for self-opening
- Shear-type cutting blades for square, clean cuts
- Hardened steel with precision ground paired stripping holes for 10 to 22 gauge wire
- Wire looping and bending holes

Part Number: WS1022



## Ergonomic Wire Stripper/Cutter

Sames features as WS1022 plus:

- Double dipped handles with air cushion pockets
- Strips 10-20 gauge wire
- Built-in bolt cutters cleanly cut 6-32 and 8-32 bolts
- Electrician grade

Part Number: WS1022-ERGO Made in USA

# KwikConnect™

Professional Quality

No Clamps, No Tools, No Hassles

In repeated high pressure testing (up to 400 psi) the KwikConnect never leaked or failed. In every test, the pipe burst without one KwikConnect failure. KwikConnects are designed for use wherever standard, ASTM D 2609, insert fittings are used.\*

*\*Designed for use on 80, 100 and 160 psi pipe which meets ASTM D 2239 pressure rated polyethylene pipe standard as well as Ag drip pipe.*

Patent #8328241



## KwikConnect™ Coupler 1"

Part Number: KCC1429-010 Made in USA

Sold in Quantities: 10 Per Bag – 200 Units Per Box

## KwikConnect Features Include

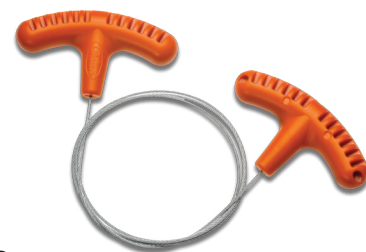
- Installs in seconds
- No clamps needed
- Fast, easy and secure
- Reduces labor
- Saves dollars
- Dependable and reliable



Expanding lock ring provides superior holding power by biting into the pipe and expanding to grip securely in high pressure or hammer situations.

PTFE coated Buna O-rings for ease of installation and long sealing life.

KwikConnect is made from the finest engineered resins available on the market today.



## Rope Saw

- Cuts plastic, wood, rubber and more
- Cuts in places you can't get to with a larger saw and cuts in any direction
- Ergonomic grips allow you to use your hands instead of just your fingers

Part Number: RS32 Made in the USA



## Hack Saw

Dawn brings you the finest high performance hack saw you can find. High tension design helps blades last longer and is more comfortable to use than other frames. It also offers versatile blade positions and can make either standard or flush cuts. Convenient blade storage in top Frame bar.

Part Number: HS12 Made in USA



## Mini Hack Saw

- Ergonomic handle made with tough resin
- Quick change blade
- Uses standard hack saw blades

Part Number: MH004



## KwikConnect™ Reducing Tee

Part Number: KCRT1402-130 1/2" FPT Made in USA  
KCRT1402-131 3/4" FPT

Sold in Quantities: 10 Per Bag – 200 Units Per Box



## KwikConnect™ Tee 1"

Part Number: KCT1401-010 Made in USA

Sold in Quantities: 10 Per Bag – 200 Units Per Box



## KwikConnect™ Male Adapter 1" x 1" MPT

Part Number: KCMA1436-010 Made in USA

Sold in Quantities: 10 Per Bag – 250 Units Per Box



## KwikConnect™ Reducing Elbow

Part Number: KCRE1407-130 1/2" FPT Made in USA  
KCRE1407-131 3/4" FPT

Sold in Quantities: 10 Per Bag – 250 Units Per Box



## KwikConnect™ Elbow 1"

Part Number: KCE1406-010 Made in USA

Sold in Quantities: 10 Per Bag – 250 Units Per Box



## KwikConnect™ End of Line 1" x Swing

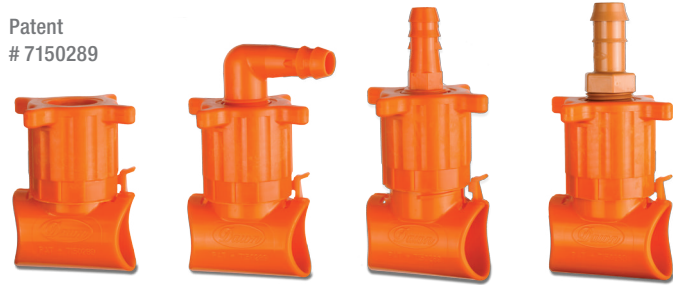
Part Number: KCEL1429-129 Made in USA

Sold in Quantities: 10 Per Bag – 250 Units Per Box



A Superior Tool-Less Saddle Tee for Polyethylene Pipe.  
The Most Secure Fittings on the Market.

Patent # 7150289



### Pre-Installed Swing/Drip Connections

- No tools, snaps or straps required
- Significantly less flow restriction than inserts
- Installs 6 x faster than inserts with worm screw clamps
- Superior versatility (remove, move, replace)

### Independent Lab Test Results

Flow Rate	Flow Restriction	Quick Burst Test
13.6 gpm @ 40psi	41% less than standard insert tee	392 psi @ 62 seconds – <b>The KwikTap fitting did not fail</b>

Part Number KTXXXXXXXX Made in USA

KwikTap Model	Size	Outlet
KT	XXX	XXXXX
KT   KwikTap	007   3/4" 010   1" 012   1 1/4" 025   25mm 032   32mm	C   1/2" FPT D   3/4" FPT SWE   Swing Elbow Adapter SWS   Swing Straight Adapter DMA17   17mm Drip Adapter

Example | KT010SWE (1" KwikTap with a Swing Elbow Adapter)

Sold in Quantities: 10 Per Bag – 200 Units Per Box

Part Number KT015XXX Made in USA

KwikTap Model	Size	Outlet
KT	015	X
KT   KwikTap	015   1 1/2"	C   1/2" FPT D   3/4" FPT SWE   Swing Elbow Adapter SWS   Swing Straight Adapter

Sold in Quantities: 10 Per Bag – 200 Units Per Box  
KT015SW-E & KT015SW-S Sold in Quantities: 10 Per Bag – 100 Units Per Box



KwikPull Simple innovation

Our Pipe Pullers start working in seconds. Slip the pipe into the puller and you're ready to go. **It's that simple.**

This patented method seals the pipe as it bends and enters the ground, eliminating the need for tape. Save on labor, fuel and machine time.

### 1" Heavy Duty Dual Pipe Puller

Patent # 7654774



Part Number: DPP01

Made in USA

### 1 1/4" and 1 1/2" Heavy Duty Pipe Puller



Part Number: DPP15

Made in USA

### 2" Heavy Duty Pipe Puller



Part Number: DPP02

Made in USA

### KwikLink



Part Number: KL111



### KwikSeal Saddles

A superior saddle tee for Polyethylene that eliminates the hassles and problems associated with insert fittings.

- No rubber gaskets
- Lower profile saddle tee
- T-Bolt and Nut made of fiberglass reinforced nylon
- No clamps to rust or corrode
- Molded barb seal



### Zero Flow Restriction

Withstands Over 400 PSI Without Leaking

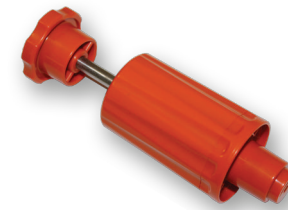
2 1/2" length protects seal area if pipe is kinked or damaged near saddle tee.

Part Number XXXX

KwikSeal Model/Size	Outlet
XXX	X
75   3/4" Poly Saddle	C   1/2" FPT
100   1" Poly Saddle	D   3/4" FPT
125   1 1/4" Poly Saddle	

Example | 100C (1" KwikSeal with a 1/2" Outlet)

Sold in Quantities: 10 Per Bag – 250 Units Per Box



### Coring Tool

Part Number: HCT-COMBO

Made in USA



Patent # 478189

### Nut Driver

Part Number: ND375

Made in USA

### Watch the Video

Snap this icon on your Smartphone to watch the video





**Crimpers**

- Forged from high quality tool steel for heavy usage
- Perfect for installing or removing pinch clamps as well as cutting wire strapping, pulling nails and more

Part Number:  
CT108 Length 8" | CT112 Length 12"



**Groove Joint Pliers**

- Jaws have zinc phosphate finish for rust protection
- Parallel jaws grip in all positions

Part Number:  
GJP100 Length 10" | GJP120 Length 12"  
GJP160 Length 16"



**Dead Blow Hammer**

- Tough, non-marring striking face
- Weighs 1 1/2" pounds
- No bounce

Part Number: DBH15



**Utility Knife – Folding**

- Durable construction
- Accepts most standard blades
- Convenient pocket clip
- Retractable blade securely folds into handle

Part Number: UK200



**Snap Off Utility Knife**

- Great for light-duty cutting and trimming
- Always have a fresh sharp blade
- Eight snap-off segments per blade

Part Number: S0123



**Turf Knife "The Claw"**

- Cutlery grade steel blade
- Comfortable non-slip grip
- Fixed hook serrated blade knife for quick clean cutting of sod or turf grass, roofing material, and floor coverings

Part Number: TK300



**Nipple Extractor**

- Quickly removes both 3/4" and 1/2" PVC or Polyethylene risers and nipples
- Extra sharp, long lasting gripping blades

Part Number: NE005



**Four Way Key**

- Fits stopcocks, sillcocks and valves
- Heat-treated steel

Sizes:  
1/4", 9/32", 5/16", 11/32" internal square

Part Number: KEY04

**Replacement Blades**

**Hand Saw**



Part Number: BGS09F | BGS13F | BGS18F Made in USA

**Hack Saw**



Part Number: HSB18 | HSB24 | HSB32 | 10 Pack Made in USA

Sold in Quantities: 10 Per Pack

**KwikCut (Original and Advanced)**



Part Number: BT100 | BT135 | SSB200 | BT100-SS | BT135-SS Made in USA

**Ratchet Cutter**



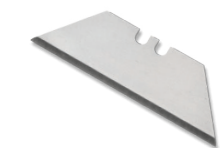
Part Number: BR125 Made in USA

**Snap-off Utility Knife**



Part Number: BS0123 | 10 Pack Made in USA

**Utility Knife**



Part Number: BUK100 | 5 Pack Made in USA

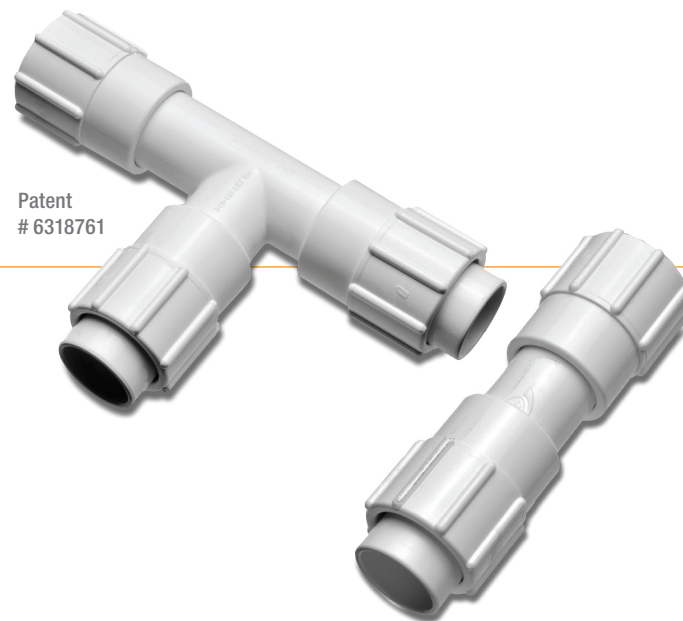


One-Piece PVC In-Line Repair and Fitting Replacement.  
The Only Permanent Solvent Weld Repair.

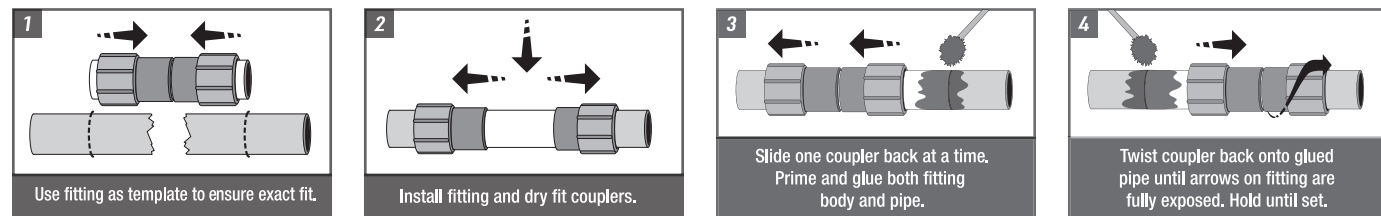
### KwikRepair Tee and Coupler

KwikRepair™ makes in-line installation or repair of PVC lines faster, easier, stronger and more cost efficient with just 1 fitting. The KwikRepair sleeves slide onto the pipe, once primer and solvent is applied to the end of the fitting and end of the pipe being repaired, eliminating bending or flexing of the pipe. Made in the USA in our Colorado factory.

- Do the job with just one fitting
- Permanent solvent weld seal
- Effective for limited space applications
- No Thrust Blocking or Staking needed



Patent # 6318761



Part Number: KRXXXX

Made in USA

KwikRepair Model	Outlet
KRXXXX	
KRT 401   Repair Tee	005   1/2"
KRC 429   Repair Coupler	007   3/4"
	010   1"
	012   1 1/4"
	015   1 1/2"
	020   2"
	025   2 1/2" (Not Available in Tee)
	030   3" (Not Available in Tee)
	040   4" (Not Available in Tee)

Tees 1/2" - 1" Sold in Quantities: 10 Per Box  
Tees 1 1/4" - 2" Sold in Quantities: 5 Per Box  
Couplers 1/2" - 1 1/2" Sold in Quantities: 10 Per Box  
Couplers 2" - 4" Sold in Quantities: 5 Per Box

### KwikRepair Working Pressure Ratings @ 73° F

Diameter	Pressure
1/2"	450psi
3/4"	360psi
1"	338psi
1 1/4"	278psi
1 1/2"	248psi
2"	210psi
2 1/2"	225psi
3"	135psi
4"	165psi



### KwikSlip PVC Glue Fittings

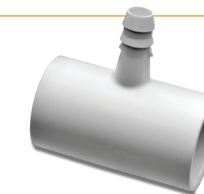
KwikSlip™ is a one-piece glue fitting for PVC to Swing or Drip pipe

- Faster to install
- No threads to leak
- Save on labor cost

### KwikSlip "Y" Tee x Swing



### KwikSlip Tee x Swing



### KwikSlip Spigot x Hub x Swing



### KwikSlip Tee x 17mm Drip



### KwikSlip Spigot x Hub x 17mm Drip



Part Number: SCXXXXXX

Made in USA

KwikSlip Model	Size   Outlet
SCXXXX	XXX
SC   Spigot x Hub	101   3/4" x 1/2" Spigot x Hub (Not Available with Drip Outlet)
SCD17   Spigot x Hub to 17mm Drip Outlet	131   1" x 3/4" Spigot x Hub
	168   1 1/4" x 1" Spigot x Hub

Sold in Quantities: 10 per Bag - 250 Units per Box  
SC101 Sold in Quantities: 25 per Bag - 250 Units per Box

KwikSlip Model	Size   Outlet
SXXXX	XXX
ST   Spigot x Hub	005   1/2" Tee (Not Available with Drip Outlet)
STD17   Spigot x Hub to 17mm Drip Outlet	007   3/4" Tee
SY   Y x Swing Outlet	010   1" Tee

Sold in Quantities: 10 per Bag - 250 Units per Box  
ST005 Sold in Quantities: 25 per Bag - 250 Units per Box



### KwikSnap PVC Glue Saddles

KwikSnap™ is a glue-on PVC "Y" Saddle for use with 3/4" and 1" PVC to Swing.

- Do the job with just one fitting
- Fitting outlet molded at 30° angle to prevent kinking of the Swing pipe

Part Number: KSYXXX

KwikSnap Model	Size   Outlet
KSY	XXX
KSY   KwikSnap Saddle	007   3/4" Y x Swing Snap Saddle
	010   1" Y x Swing Snap Saddle

Sold in Quantities: 25 per Bag - 250 Units per Box



The KwikAdapt line of products offers fast, secure connections from Polyethylene pipe to Swing pipe in a one-piece design. The barb and spike combination keeps the Swing pipe in place even under pressure surges.

- Faster to install
- Save on labor cost
- Strong and convenient
- Barb and Spike design

### Swing Coupling

Part Number: SW1429-003

Made in USA



### Swing Tee

Part Number: SW1401-003

Made in USA



### Swing Adapter

Part Number: SW1436-073 (1/2") | SW1436-099 (3/4")

Made in USA



### Swing Elbow

Part Number: SW1413-073 (1/2") | SW1413-099 (3/4")

Made in USA



### Swing Tee x 1/2" MPT

Part Number: SW1403-003

Made in USA



All Items Above Sold in Quantities: 50 Per Bag – 1,000 Units Per Box

### Drip Adapter

Part Number: DMA17-050 (1/2" MPT x 17 mm)

Made in USA

Sold in Quantities: 50 per Bag – 1,000 per Box



### End of Line

Part Number: SW1429-099 (3/4") | SW1429-129 (1")

Made in USA

Sold in Quantities: 25 per Bag – 1,000 Units per Box



### Swing Insert Tee

Part Number: SW1401-099 (3/4") | SW1401-129 (1")

Made in USA

Sold in Quantities: 10 per Bag – 250 Units per Box



### KwikTote "Industrial Strength"

- Made of High Density Polyethylene
- Resistant to Acids, Harsh Chemicals and Oils
- Lightweight, Tough and Durable
- Great truck organizers



### KwikGlue Tote

- Can be used for quart/pint cans
- Carries glue and primer together (cans not included)
- Eliminates spills, waste and loose cans



### KwikBucket Storage Organizers

- High-impact plastic bucket with heavy duty handle
- Comes with three large sorting trays
- Comes with a very rugged and durable water resistant lid

Part Number: PT005

Made in USA



### KwikCut Tool Pouch

Dawn's leather tool pouches are great for holding KwikCut Pipe cutters, wire strippers or any other tools that fit. Made of high quality leather.

Part Number: CP10

Made in USA

Part Number: GT200

Made in USA

### KwikBucket Apron

- Features 22 pockets
- Increases storage capacity
- Fits all 3.5 and 5 gallon buckets
- Secures permanently with attachment accessories

Part Number: BA20

