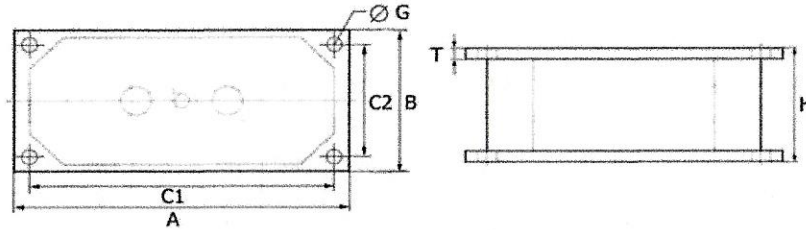
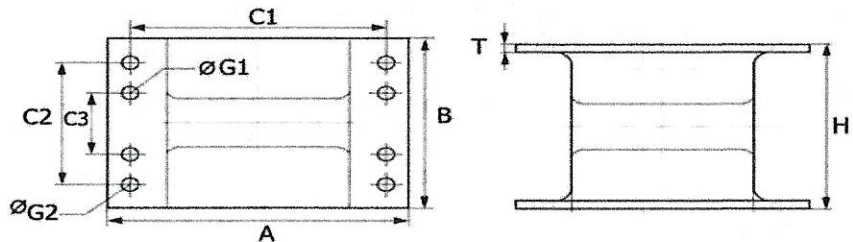


IC0501 Series



Everpads Item	Maker	Model No.	Dimension								Hardness +/-3	Part No.	Q'ty	
			A	B	H	C1	C2	G	T					
IC0501	STAVESTRO	VV71-D, VV900, VV900D, VV1100, VV1400, VV1401, VV1402, VV1403, VV1500, VV2004, VV2010	250	125	100	226	101	12	8			50~60	204721, ND090010, ND090011, ND106544	
IC0501-1	STAVESTRO		250	125	95	226	101	12	5.5			50~60		
IC0502	BOMAG	BW212D-3, BW212S-3, BW213D-3, BW214D-3, BW216D-3, BW216D-4, BW219DH-3, BW219DH-4	326	113	94	295	85	15	8			50~60	06180100, 06180100-03	4
IC0503	CATERPILLAR		195	160	88	170	120	14	5			50~60		
IC0505	APE (pile hammer)		320	112	90	295	85	14	8			50~60		
	BOMAG	BW225-3												
IC0506	APE / PTC	PTC50H	265	130	100	220	98	14	6			50~60	130685	4
	ICE	23, 625M, 823M, 1223B											9205017	
IC0508	PTC	50HD, 60HD, PTC30HF, PTC50	450	300	330	400	160	22	15			50		
IC0508	PTC	PTC30H1	450	300	330	400	160	22	15			50	304212	
IC0508-1	PTC	100HD (without hole in the rubber)	450	300	330	400	160	22	15			50		
IC0508-3	PVE		450	300	325	400	160	22	15			58-60	42001.008 (hardness 60+/-2)	

IC0501 Series



Everpads Item	Maker	Model No.	Dimension									Hardness +/-3	Part No.	Q'Ty
			A	B	H	C1	C2	C3	G1	G2	T			
IC0504-1	PVE	105M	482 +1.5	300	349	430	220	127	16.5	21	15		42001.002 (PVE, hardness 53+/-2) 42001.002A (PVE, hardness60)	
IC0504	APE / ICE / MGF	55NF, 420, 423, 815, 817, 1412, ICE416	485	300	350	430	220	127	18	21	15	50~60	0808011(ICE) 100003	
IC0507	APE / ICE	55NF, 940 , 3026, 4450, TW41	350	270	222	310	230		18		14	50~60	9403026	
IC0507-1	APE / ICE	55NF, 940 , 3026, 4450, TW41	350	270	222	310	230		16		14	50~60	9403026	
IC0509	PVE	23M, 25M, 38M, 52M, 40VM	350	300	245	280	240		18		15	50~60	42001.003 (shore A:60), 42001.006 (Shore A:50)	
IC0510	MGF		500	395	290	450	300	200	W3/4'	22	15	50~60	v v.	
	MULLER	MS-430												

*Bomag BW212, 序號為 3、4 : IC0201與IC0502搭配。