

regeneration sustainability masterplanning urban design **Agri - tecture**
town planning **architecture** landscape architecture interior design
space planning branding furniture design graphic design
Retirement Specialist Wellness Agri-tecture Neuro Architecture

Genius Loci

Spirit of place (pty)ltd

PRACTICE PROFILE

RESIDENTIAL PORTFOLIO



February 2022

GENIUS LOCI

SPRIT OF PLACE (Pty)Ltd

South Africa Reg. No. 2018/210126/07

UK Company Number 12193161

Project Management - Urban Design – Architecture- Interior Design – Landscape Architecture – **Neuro**Architecture – **Agri**itecture

Tel; +27 (0)76 669 5292

E-Mail: ronel@geniusloci.group

Website: www.geniusloci.group

WHAT'S IN A NAME.....

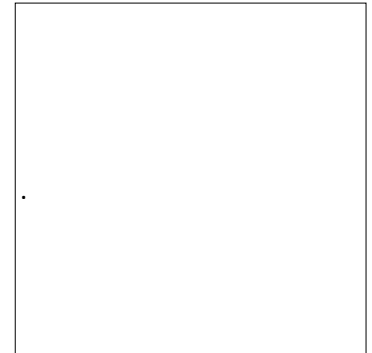
The challenge is to understand the qualities that would provide a place with its unique and appreciated atmosphere and to interpret it in a meaningful way.

(The Romans referred to these qualities as the **Genius Loci** of a place i.e. the spirit of a place.)

Genius Loci is the **spirit that gives life to people and places**, accompanies them from birth to death, and determines their character or essence (Norberg- Schultz in Nesbitt, 2005: 421).

In **Genius Loci**: Towards a Phenomenology of Architecture, genius loci is described as representing the sense people have of a place, understood as the sum of all physical as well as symbolic values in nature and the human environment catering to a holistic engagement of all the senses as against the dominant privilege

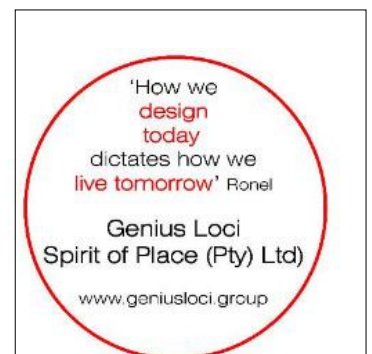
RESIDENTIAL AFRICA



We are professionals



Our motto:



Contents

WHAT'S IN A NAME GENIUS LOCI page 2	INTRODUCTION 4	TEAM STRUCTURE 5	
RESIDENTIAL PROJECTS AFRICA 6	RESIDENTIAL PROJECTS INTERNATIONAL 23		
MEMBERSHIPS 31	OUR COMMITMENT TO SUSTAINABILITY AND REGENERATION 32		
CV'S 33	COMPANY REGISTRATIONS (ON REQUEST)	BANK DETAILS (ON REQUEST)	PROFESSIONAL INDEMNITY INSURANCE (ON REQUEST)

Genius Loci Spirit of Place (Pty)ltd
Ronel Wiese Fourie - MBA
 Chartered RIBA Architect 11534949
 B.Arch (UFS), ARB/RIBA part iii
 Candidate PhD: **NeuroArchitecture: Retirement/ Dementia design**
 AMBA No. 2001037
 SACAP No 49210947

Sarel Franssoa Fourie
 B.Arch (UFS), ARB/RIBA part iii
 Masters in Sustainable Agriculture
 Candidate PhD: **Bio Architecture**
 SACAP No. 53001876



3

Introduction

Architecture should better the human condition

Franssoa: (Director of Genius Loci –Spirit of Place (pty)ltd)

•Professional Architect &Urban Designer

- Franssoa is a full time working Architect and Urban Designer. Working on all stages and all scales of a project adding value to projects with knowledge gained by experience, a can do attitude of in time, on budget and the Client as number one priority.
- After completing his Architect degrees in Bloemfontein, Franssoa worked in London for 12 years mainly on residential projects from design to completion. He is a rare find in architecture – he is a strong design architect but equally a strong technical architect.
- Franssoa studied a Master in Sustainable Agriculture which he obtained summa cum laude. He is currently completing his PhD in Architecture with a focus on Bio-materials – Alternative Construction materials focusing on Mycelium (mushrooms)part time).
- He has more than 22 years experience in practicing as an Architect. Franssoa has designed and build over 3 300 residential units mainly in the Western Cape and has been involved in all stages of the projects from inception to completion. Franssoa is passionate about Regeneration and Sustainability Agri-Tecture. (architecture + agriculture)
- Ultimately a farmer at heart with his roots in Namibia.

Ronel (Director of Genius Loci –Spirit of Place (pty)ltd)

•Professional Architect & Business Developer

- Ronel is a full time working Architect for the past 22 years - adding value to projects by research/market, creativity and business opportunities - the saying goes nothing beats experience. After completing her Architect degrees in Bloemfontein she continued her study in Architecture in London where she work for Top 100 Architect firms for 12 years.
- She obtained her Masters of Business Administration in London in 2005
- She is currently completing her PhD in Architecture, part time. focusing in Neuro-Architecture.
- Ronel notably worked in Dubai on the Palm Islands project and also set up an office in Belfast where she was the Associate of the award winning Obel Tower – mixed use development.
- She also worked at PRP Architects as a Senior Architect in London. The leading later life designers in Europe, Asia and Africa.
- She has been involved in over 32 Residential Estates in South Africa with components such as retirement, office parks, eco-estates, hotel and private estates as well as affordable housing. She was the lead architect on 28 000 affordable housing that is currently being build in Namibia.
- She is a qualified food and safety auditor and her quest is to find the best Bloody Mary. In her spare time she studies at the Swiss Institute for Disruptive Innovation -Space Architecture.

They have establish their firm in 1999 but only started practicing in their own name in 2018 - Genius Loci Spirit of Place (Pty)ltd.

The Genius Loci Team – Our practise area as strong as our team.

- We are an integrated team of Urban designers, Interior designers, Landscape Architects, Planners, Quantity surveyors, Energy Consultants and Project managers.
- We are a multidisciplinary team and we have a network all over South Africa and the world.
- We understand the procedures of Municipalities and Councils and have a good relationship with the employees
- Our experience range on all scales of development from inception to post completion.
- We understand that your development needs to make business sense. In time on budget on cost

We are Professionals

Genius Loci Spirit of Place (pty)ltd practise profile

Why Us

Genius Loci's commitment

Genius Loci is committed to innovation in the design of life changing environments.

We understand the value and importance of time, cost and quality in a project. We are committed to deliver projects sustainability, on time in budget.

In order to ensure the relevance of the spaces we design, we conduct research into current and projected trends in the way people live and interact with the built environment.

Where it all started 1999



Our motto:



Interdisciplinary Team Structure

Committed to innovation in the design of life changing environments and to make business sense to our clients

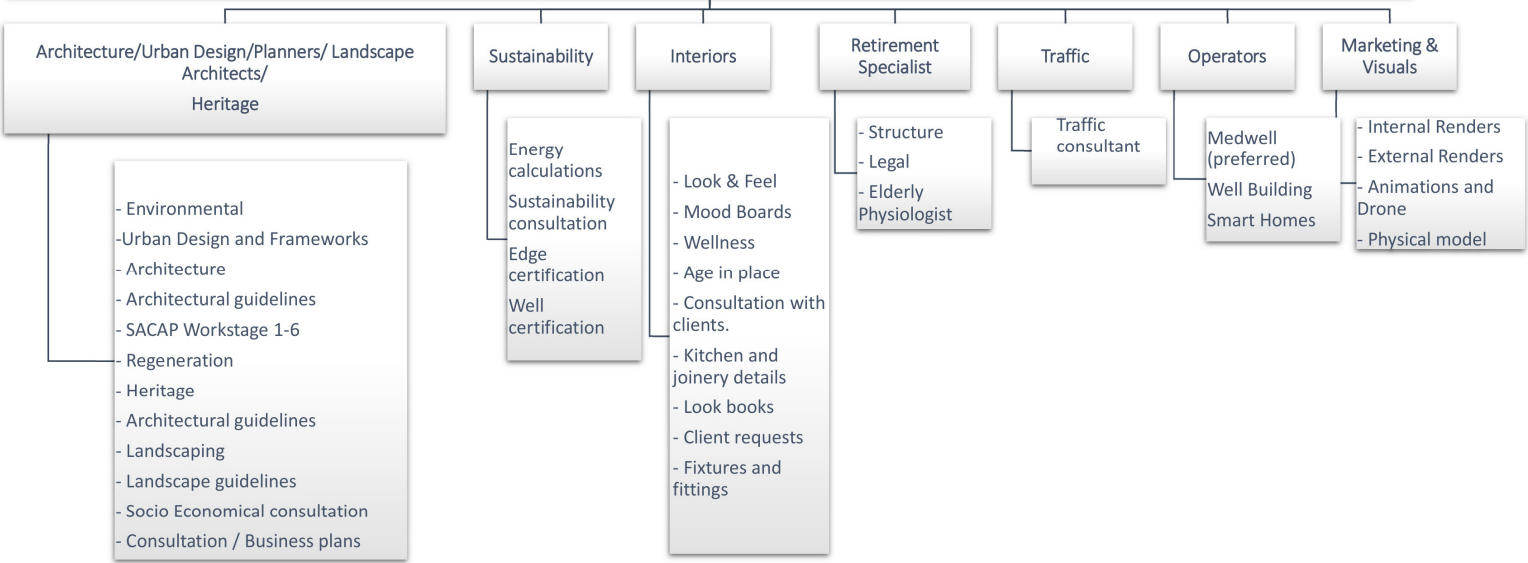


GENIUS LOCI
SPIRIT OF PLACE (Pty)Ltd

South Africa Reg. No. 2018/210126/07 UK Company Number 12193161

Project Management - Urban Design - Architecture- Interior Design - Landscape Architecture - NeuroArchitecture - Agritecture

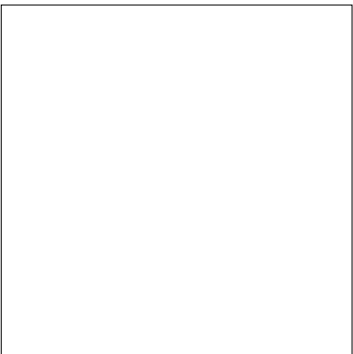
Tel; +27 (0)76 669 5292 E-Mail: ronel@geniusloci.group Website: www.geniusloci.group



GENIUS LOCI TEAM

Architecture is measured
against the
past,
you build in the
present,
and try to imagine the
future.
Richard Rogers

We are professionals



Our motto:

'How we
design
today
dictates how we
live tomorrow' Ronel

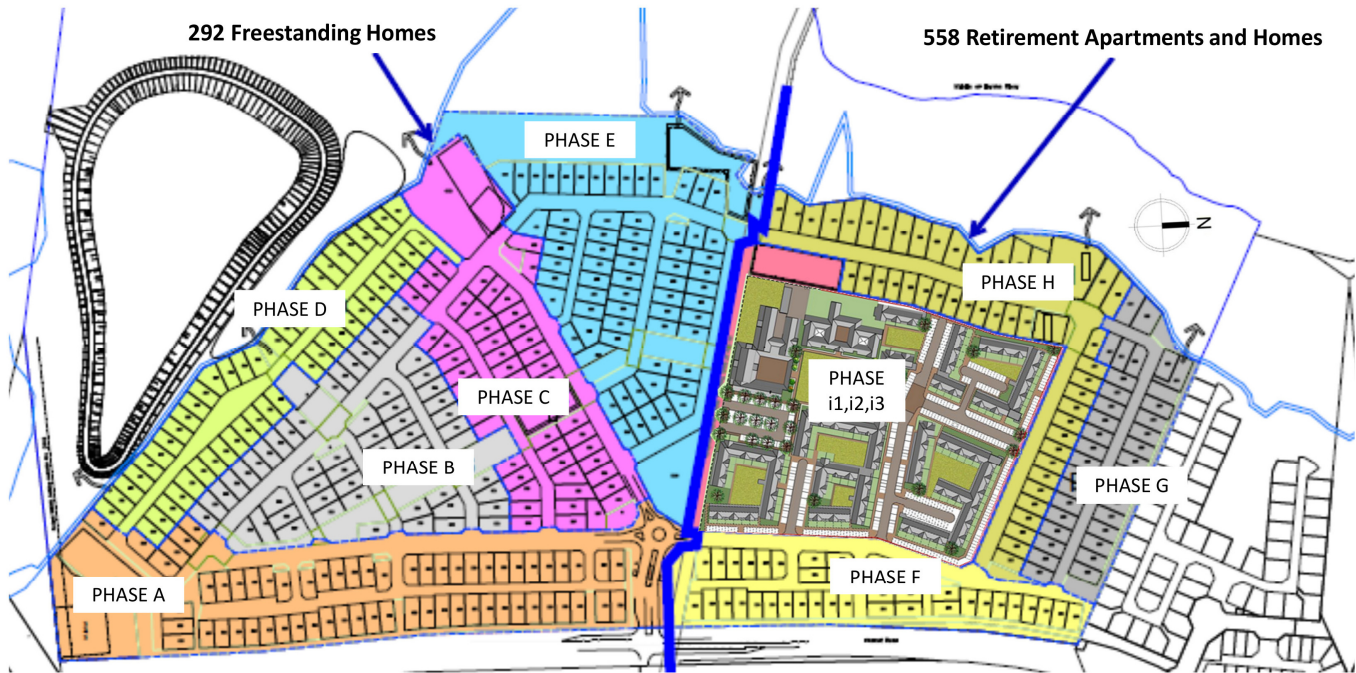
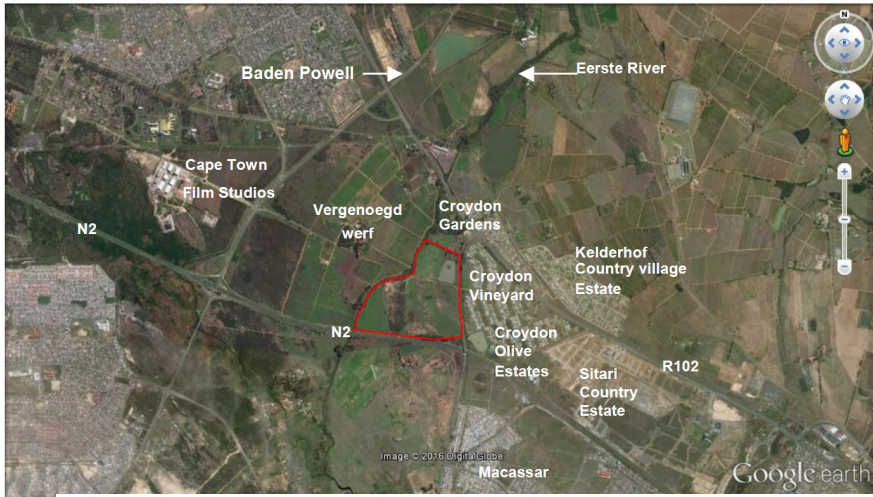
Genius Loci
Spirit of Place (Pty) Ltd

www.geniusloci.group

RESIDENTIAL
AFRICA



Vergenoegd Village, Multi Generational Village, Somerset West



Client:

Stock Capital

Size:

- 292 Freestanding design led homes,
- Clubhouse and Eco park design
- 438 Age in Place Apartments/ later live living.
- Retirement facilities such as the Memory Care Center catering for Dementia (Alzheimer's and Neurological diseases). Clubhouse including restaurant, kitchen, laundry, Multi-Purpose Hall, Gym and Wellness Areas

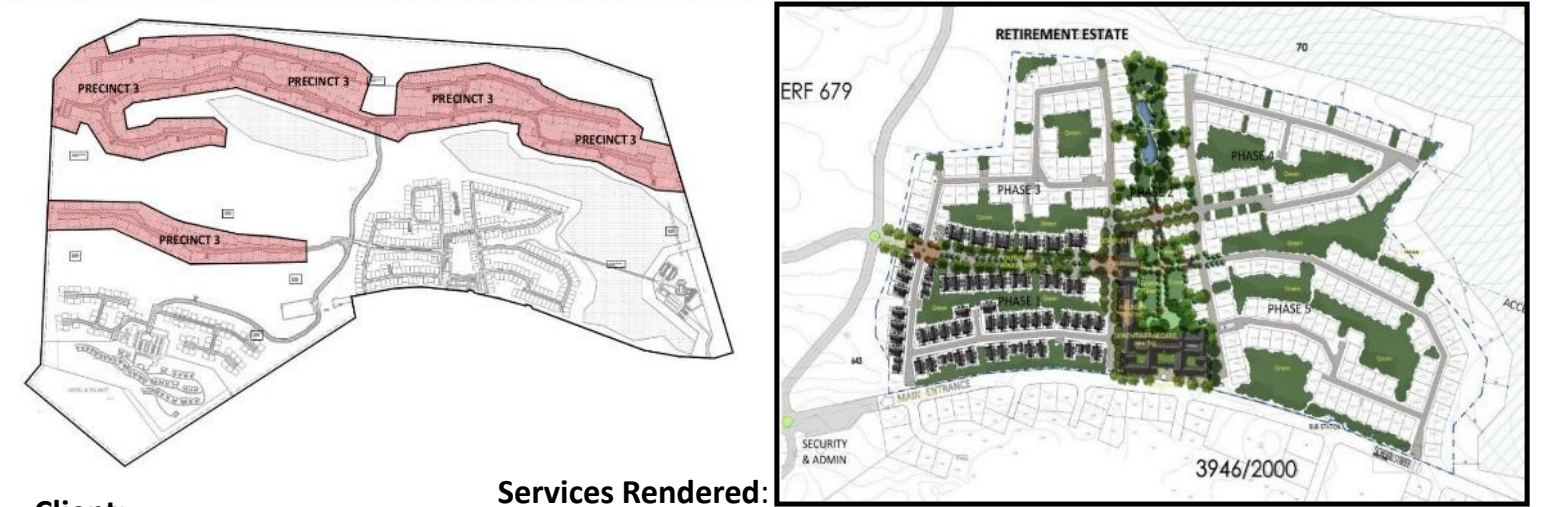
Role: Lead Architect & Urban Design

©Genius Loci Spirit of place

- Urban Design and Urban design Framework
- Architecture and guidelines (Workstage's 1-6)
- 3D Modeling
- Interior Design
- Working drawings look and Feel
- Landscape Design
- On Site Co-ordination
- Project Management
- Drone imagery



Projects: L'Agulhas – Eco Estate and Retirement, Agulhas

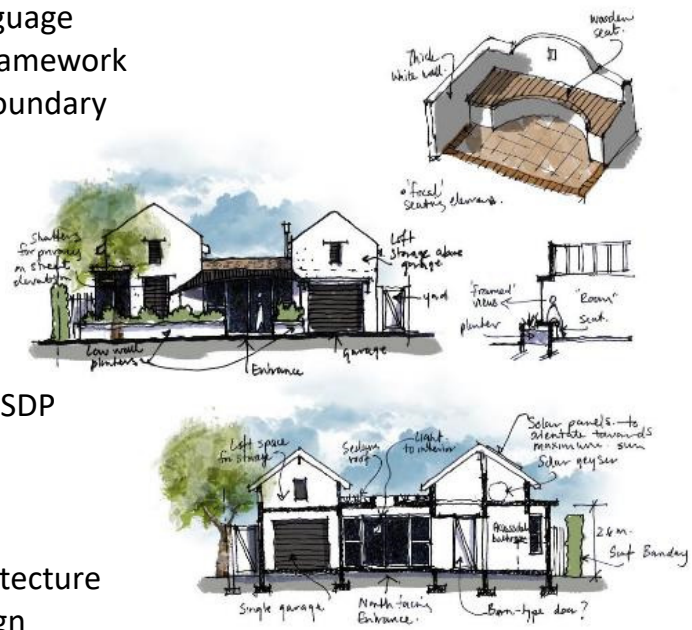


Client:
Size: Square Turn
Developments
Role: Lead Architect
©Genius Loci Spirit of Place

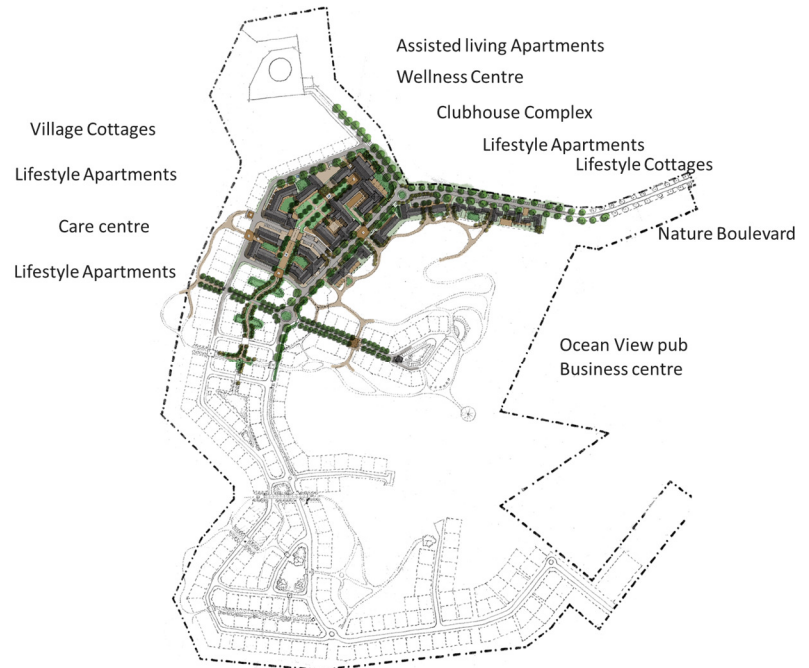
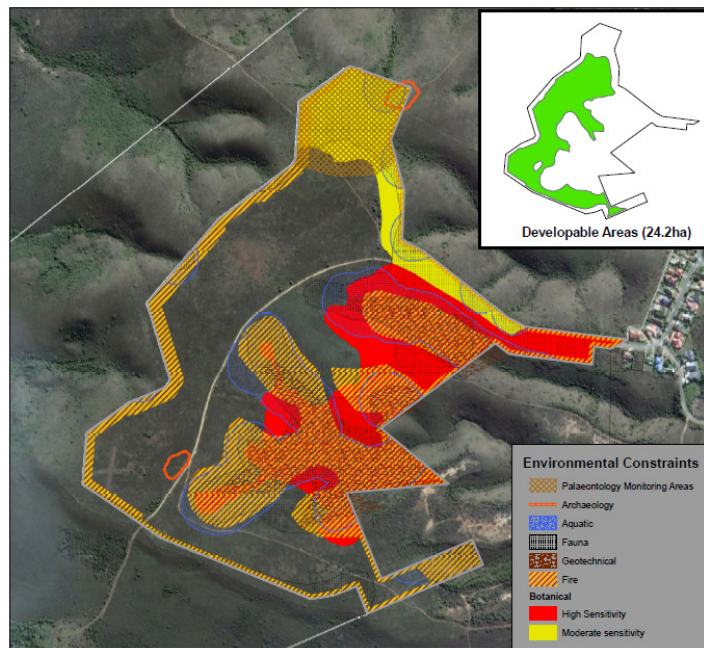
- Private Estates Single Residential 14
- Lifestyle Erven 160
- Cluster Housing/Lodges 76
- Retirement Village 366 with ancillary accommodation
- Hotel / Tourist Node 150 Beds
- Estate Centre
- Gate House Landscaping
- Number of Erven 650

Services Rendered:

- Design on All Scale from Macro to Micro –
- Architecture Language
- Urban Design and Framework
- Entrance gate and boundary
- wall
- Interior Design
- Marketing Strategy
- Marketing Images
- CGI's
- Drone footage
- Council submissions SDP
- Planning
- Building Plans
- Interior Design
- Specialist Nero Architecture
- consultation & Design
- Public participation
- TV interviews
- Model building
- Landscaping
- Animations
- Heritage
- Architectural Guidelines



NEGESTER ATKV– Hartenbos, Garden Route South Africa



We have to learn how to dwell poetically.... Heidegger



Client:

Rubicon and ATKV

Size:

Total Site Area = 60 Ha

Development area = 24 Ha

Role: Project Management, Architect, Interior Designer and Marketing

©Genius Loci Spirit of place /ARG

- 187 Erven Size range 500-700sqm
- 162 Erven Size range 200 sqm
- Memory care center 72
- Medical Center 600sqm
- Clubhouse and Sport Facilities
- Gatehouses
- Reservoir
- Refuse & Storage
- HOA Workshops & Storage



9



Projects: Great Oaks –

Constantia Cape Town (2019 – On Site)



Client:

Constantia Developers

Size:

- 53 two- and three-bedroomed cottages
- 30 studio, one- and two-bedroomed apartments
- Health Center with Restaurants, Clubhouse, Frail Care and Dementia care

Role: Project Management, Architect, Interior Designer and Marketing

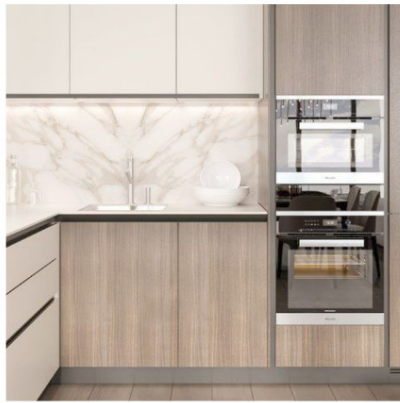
©Genius Loci Spirit of place /ARG

- **Age-in-Place philosophy**
- Drone imagery
- 3D Modeling
- Interior Design
- Working drawings look and Feel
- Landscape Design
- On Site Co-ordination
- Project Management



Great Oaks – Constantia Cape Town

2019 – Interior



Services Rendered:

- Interior design
- Marketing Material
- Look Books
- Furniture and Fittings design and scheduling.
- Client and Buyers program and project manager.



Great Oaks – Constantia Cape Town

2019 – Health Center



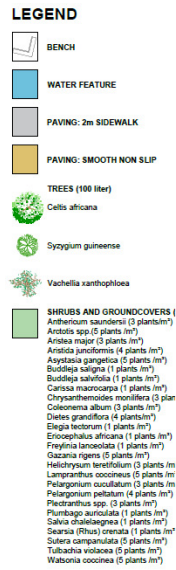
Services Rendered:

- Design on All Scale from Macro to Micro environment
- (right down to the cutlery)
- Entrance gate and boundary
- wall
- Interior Design
- Marketing Strategy
- Marketing Images
- CGI's
- Drone footage
- Council submissions SDP
- Planning
- Building Plans Construction information
- Interior Design
- Specialist Nero Architecture consultation & Design
- Memory Care interior design
- Mood Boards
- Public participation
- TV interviews
- Model building
- Landscaping
- Animations
- Heritage



12





Street View from West



Street View from North



Street View from East



Birds Eye View from West



Birds Eye View from East



Birds Eye View from South



Section A



Section 1

[illegible]

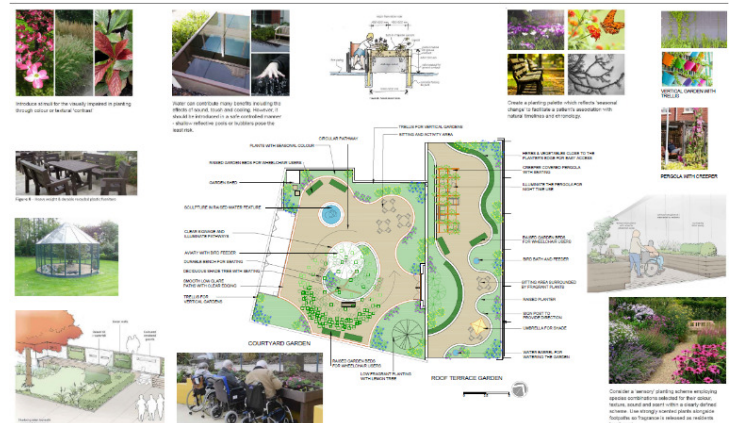
Proposed New Dementia Care Centre 1 Dumfries Road EH8 9E1	3D Views	Project No: 2023/001 Date: 15/03/2023	Page: 1 of 1
		Site: 1 Scale: 1:500	Date: 15/03/2023
3D SUBMISSION		The proposed development is shown on the site plan and is shown in the 3D view. The 3D view shows the proposed development in relation to the surrounding environment. The 3D view shows the proposed development in relation to the surrounding environment.	

CONFIDENTIAL: This is the trade dress property of the owner. No part of these PPTs can be copy, reprinted, distributed or used without prior consent.



PROJECT Proposed New Dementia Care Centre 1 Dumfries Road S/E 6610	SECTIONS Sections A & B	DRAWING NO. TITLE DATE BY CHECKED BY
		GCP SUBMISSION <small>THIS DRAWING IS THE PROPERTY OF THE ARCHITECT AND IS NOT TO BE REPRODUCED OR USED IN ANY MANNER WITHOUT THE WRITTEN PERMISSION OF THE ARCHITECT.</small>

- Lighting and Spaces

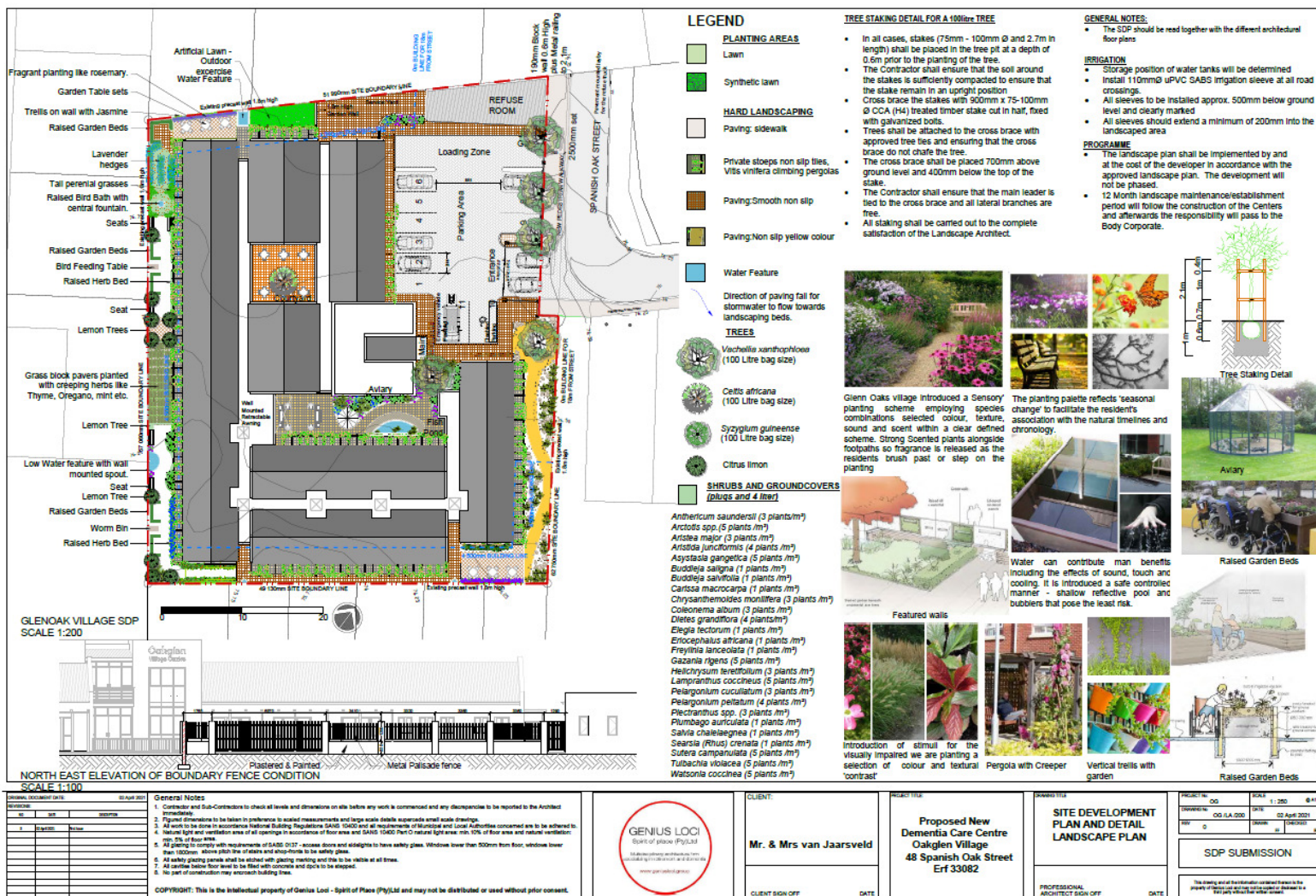


www.geniusloci.group



Genius Loci Spirit of Place (pty)ltd practise profile

Projects: HARMONIE MEMORY CARE, DURBANVILLE



Client:

Harmony Old Glen

Size:

- 36 Bed Dementia Center with

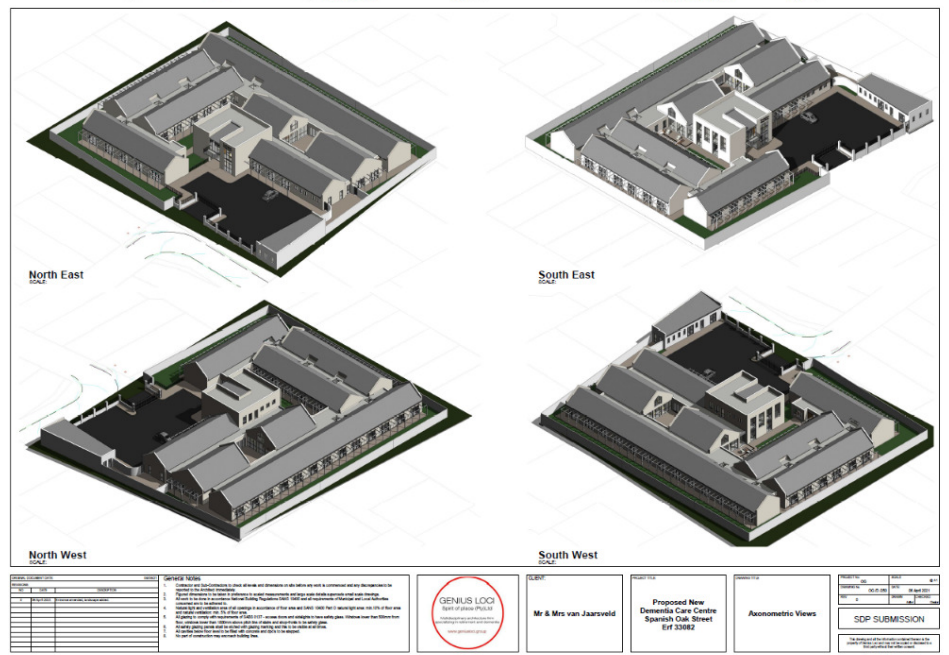
- ancillary accommodation

Role: Lead Architect/Interior Designers/Landscape design

©Genius Loci Spirit of place

- Age-in-Place philosophy

- Design
- 3D Modeling
- Interior Design
- Working drawings look and Feel
- Landscape Design
- On Site Co-ordination
- Project Management
- People Centered Design
- Lighting and Spaces
- Workstage's 1-4,1



Projects: FORMOSA VILLAGE MEMORY CARE, PLETTENBERGBAY

[illegible]

ANDREW O'GRADY ARCHITECT
3 ARCHITECTS, 15 MANLY BOYS, MANLY, NSW
6 Longships House, 2 Longships Drive, Pittenbergs Bay
P O Box 1454, Pittenbergs Bay, 5000
a.j.ogradyn@btinternet.com
www.aogrchitect.co.za
Tel: 044 530 2233
Fax: 086 617 7297
Cell: 083 584 9402
cc2004/107249/23

**PROPOSED NEW HEALTH CARE CENTRE
FOR FORMOSA GARDEN VILLAGE
ON BRP 8003, PLETTERBERG BAY**

3D RENDERS

PROPERTY OF GEORGE LOUI - SPIRIT OF PLACE (PTY) LTD AND MAY NOT BE DISTRIBUTED OR USED WITHOUT PRIOR CONSENT.				
PROJECT NO.	SCALE	DATE	DRAWN	DRAWING NO.

Client:

Formosa Village Trustees

Size:

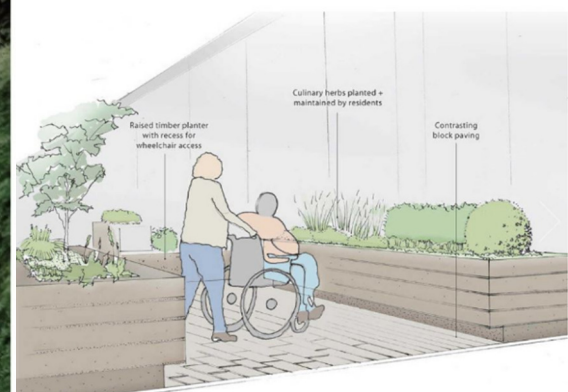
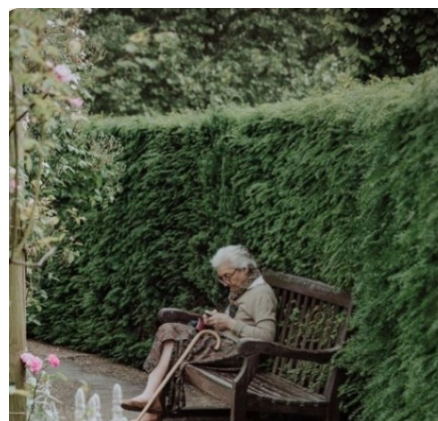
- 36 Bed Dementia Center with
- ancillary accommodation

Role: Lead Architect/Interior Designers/Landscape design

©Genius Loci Spirit of place

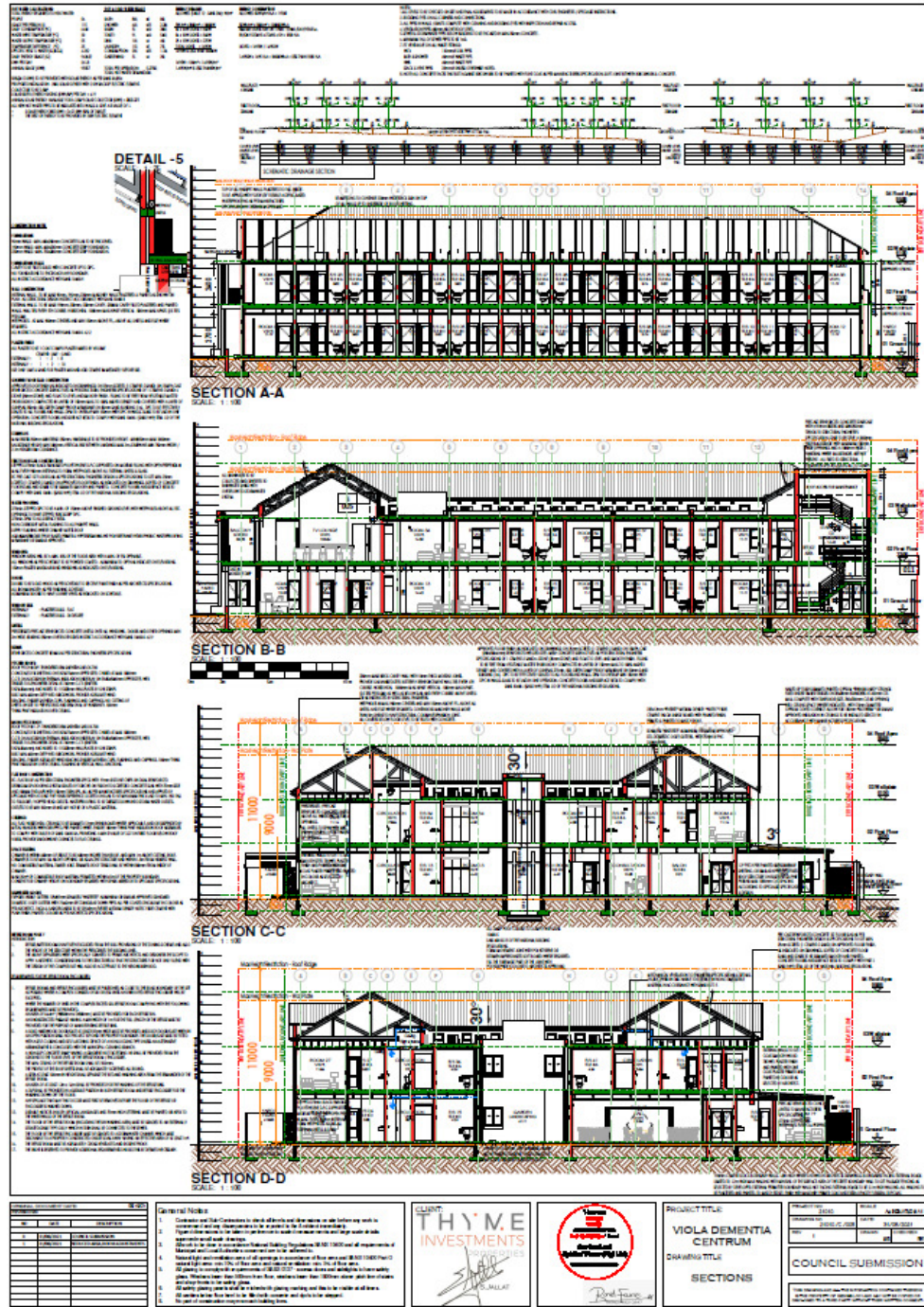
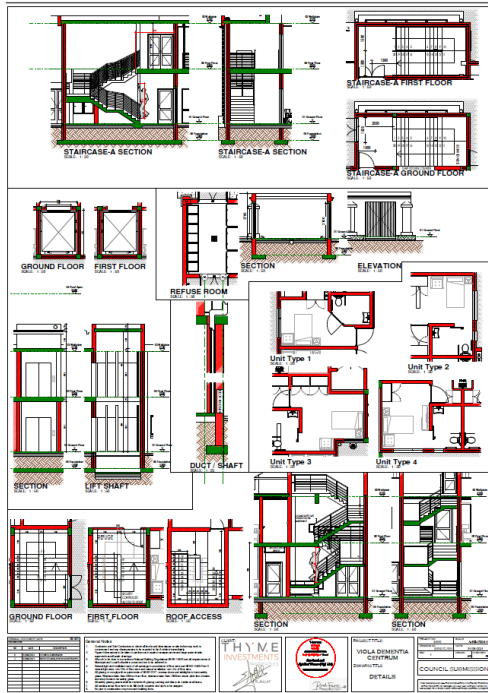
- Age-in-Place philosophy

- Design
- 3D Modeling
- Interior Design
- Working drawings look and Feel
- Landscape Design
- On Site Co-ordination
- Project Management
- People Centered Design
- Lighting and Spaces
- Workstage's 1-4,1



VIOLA ROAD DEMENTIA CENTER WESTERN

CAPE, SOUTH AFRICA



Client:

ThyMe developer

Size:

- 55 Bed Affordable Dementia Center with ancillary accommodation

Role: Lead Architect/Interior Designers/Landscape design

©Genius Loci Spirit of place

- Council submission
- Building plan submission
- Existing structure
- Extremely complex site

Genius Loci Spirit of Place (pty)ltd practise profile



AWARD WINNING BUH-REIN ESTATE

WESTERN CAPE, SOUTH AFRICA



Client:

Multi Spectrum Property Group

Size:

- Mixed use development
- Gatehouse
- Retirement village -418 retirement cottages and an institutional complex, including a frail care facility and a dementia centre and an assisted living centre as well as a clubhouse and associated amenities.
- 43 assisted living apartments
- Heated swimming pool, bowls lawn, gymnasium, salon, hobby room and 2 restaurants situated in the Lifestyle Centre.
- Herb and vegetable gardens

Role: Lead Architect and Urban Designer

©Dennis Moss Partnership

- Feasibility Studies
- Concept Design
- Detail Design
- Urban Design Framework
- Co-ordination of Marketing material
- Retirement research and dementia care
- Council Plan submission
- Building Plan submission
- Site Visits



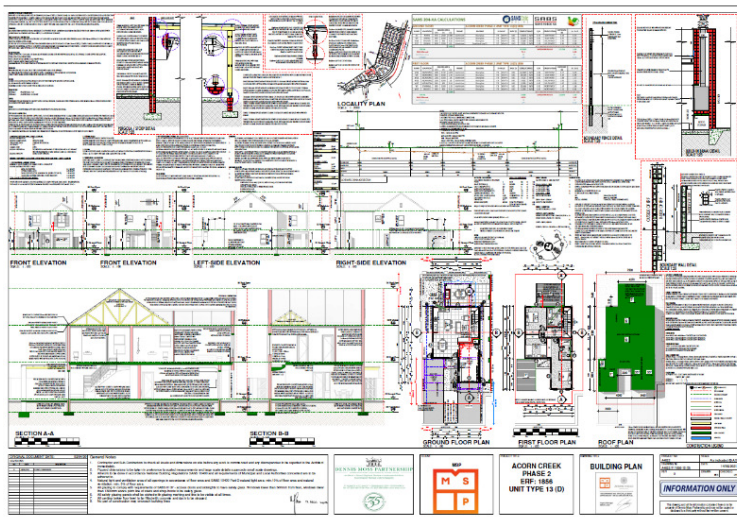
DENNIS MOSS PARTNERSHIP

Architects • Urban & Regional Planners • Environmental Planners
Landscape Architects • Urban Designers



ACORN CREEK, RESIDENTIAL DEVELOPMENT

PHASE 2 & 3-6 WESTERN CAPE, SOUTH AFRICA



Client:

Multi Spectrum Property Group

Size:

- Phase 2 Site Co-ordination and Client Requests
- Phase 3 -6: Type design
- Site Development Layout 245 Houses
- Design Framework
- Marketing material

Role: Senior Architect and Urban Designer

©Dennis Moss Partnership

- Phase 2 Site Co-ordination and Client Requests
- Phase 3 -6: Type design
- Site Development Layout
- Marketing material
- Urban Design Framework design guidelines



18



MAGERSFONTEIN, GOLF ESTATE WITH RETIREMENT AND ECO PARK RESIDENTIAL DEVELOPMENT

KIMBERLEY, NORTHERN CAPE, SOUTH AFRICA



Client:

Size:

- 183 Group /Single Houses ±@120-150m²/unit
- 392 Apartments town houses ±80-100m²/UNIT
- Retirement facilities such as the Memory Care Center catering for Dementia (Alzheimer's and Neurological diseases). Clubhouse including restaurant, kitchen, laundry, Multi-Purpose Hall, Gym and Wellness Areas

Role: Senior Architect and Urban Designer

©Dennis Moss Partnership

- Site Development Layout
- Feasibility
- Client Representative
- Urban Design Framework design guidelines

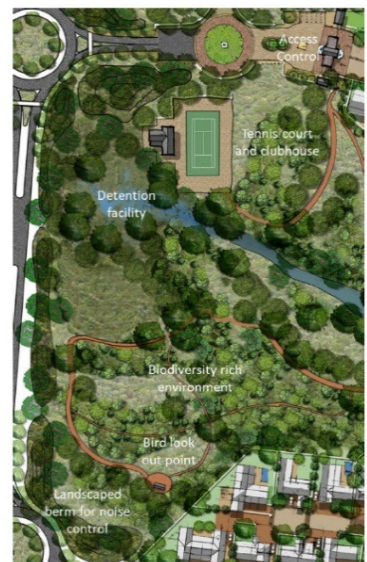


DENNIS MOSS PARTNERSHIP

Architects • Urban & Regional Planners • Environmental Planners
Landscape Architects • Urban Designers



INTERGENERATIONAL ESTATE: ZANDDRIFT, PAARL, WESTERN CAPE, SOUTH AFRICA



Client:

Combined Developers

Size:

- Mixed use development
- Gatehouse
- Phase 1 : 111 single residential erven
- PHASE 2: Village centre of Zanddrift
- PHASE 3: Retirement village -150 retirement cottages and an institutional complex, including a frail care facility and a dementia centre and an assisted living centre as well as a clubhouse and associated amenities.
- PHASE 4: residential townhouse 34 houses
- PHASE 5: productive wine farm
- Architectural guidelines
- Sustainable *guidelines*

Role: Lead Architect and Urban Designer

©Dennis Moss Partnership

- Feasibility Studies
- Concept Design
- Detail Design
- Urban Design Framework
- Co-ordination of Marketing material
- Research Paarl Zanddrift Architectural language
- Public Consultation
- Conditions imposed by Drakenstein Municipality for the rezoning and subdivision of Zanddrift



REGENERATION: BRACKENLAKE APARTMENTS, WESTERN CAPE, SOUTH AFRICA



Client:

Size:

Mixed use

1 500 Apartment

Value:

Status:

Awaiting planning approval

Role: Lead Architect

©Dennis Moss Partnership

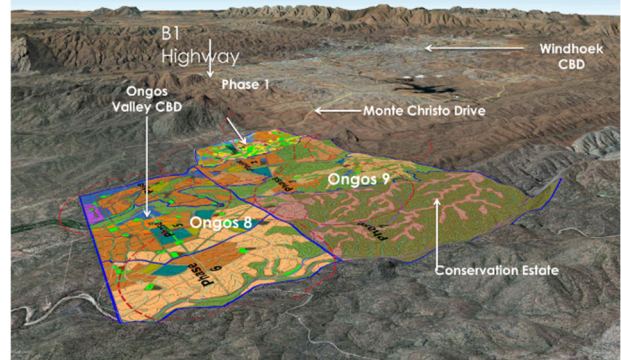
- Feasibility Studies
- Concept Design
- Detail Design
- Council Drawings
- Building Plans
- Sustainable Design parameters
- Building Model Information (Revit Co-ordination)



DENNIS MOSS PARTNERSHIP

Architects • Urban & Regional Planners • Environmental Planners
Landscape Architects • Urban Designers

ONGOS AFFORDABLE HOUSING CITY ESTABLISHMENT WINDHOEK, NAMIBIA



Client:

AIG developers. Ongos Valley

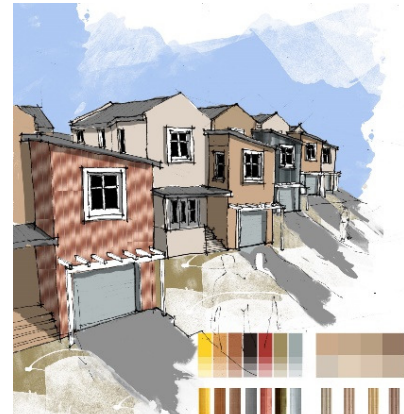
Size:

- 1,158 ha in size
- Mixed use development 28 000 Housing
- 20 schools
- Malls and service stations
- SMART city

Role: Lead Architect

©Dennis Moss Partnership

- Architectural language 28 000 Phased housing
- Urban Design
- Detail Design
- Interior Design
- Colour Scheme
- Co-ordination with Namibian architects
- Building plan submissions



DENNIS MOSS PARTNERSHIP
Architects • Urban & Regional Planners • Environmental Planners
Landscape Architects • Urban Designers

COMMITMENT

Genius Loci is committed to innovation in the design of life changing environments. **We understand the value and importance of time, cost and quality in a project.** We are committed to deliver projects sustainability, on time in budget.

In order to ensure the relevance of the spaces we design, we conduct research into current and projected trends in the way people live and interact with the built environment.

We are professionals

Our motto:

'How we design today dictates how we live tomorrow' Ronel

Genius Loci Spirit of Place (Pty) Ltd

www.geniusloci.group

RESIDENTIAL
INTERNATIONAL



LATER LIVING, UNITED KINGDOM



Client:
Various Housing Associations

Size:

- Later living communities
- Dementia Care

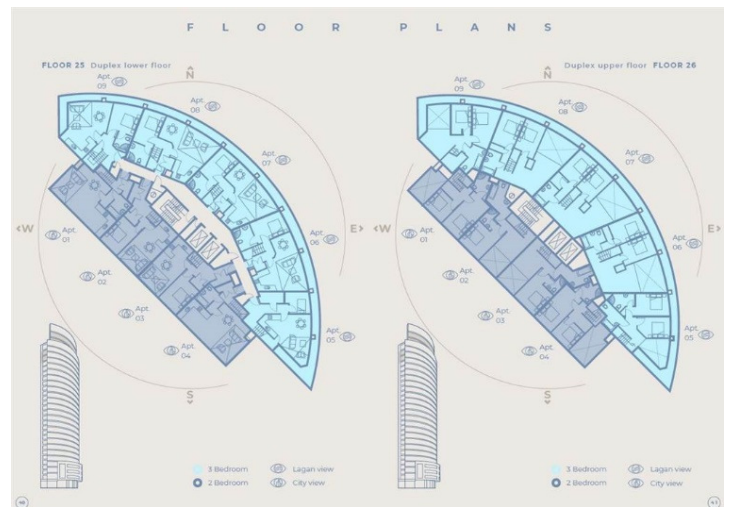
Role: Later Living Specialist Consultant, Architect and Masterplanner
©PRP Architects

- Feasibility Studies
- Concept Design
- Design guidelines



PRP

AWARD WINNING, OBEL TOWER. TALLEST STRUCTURE IN IRELAND. BELFAST, NORTHERN IRELAND



Client:

Donegall Quay Ltd

Size:

- Mixed Use office and residential 26 Storey Tower
- Regeneration of the River Lagan area in the Heart of the Belfast City
- 182 Apartments
- 144 Be hotel
- 7 Storey Office space

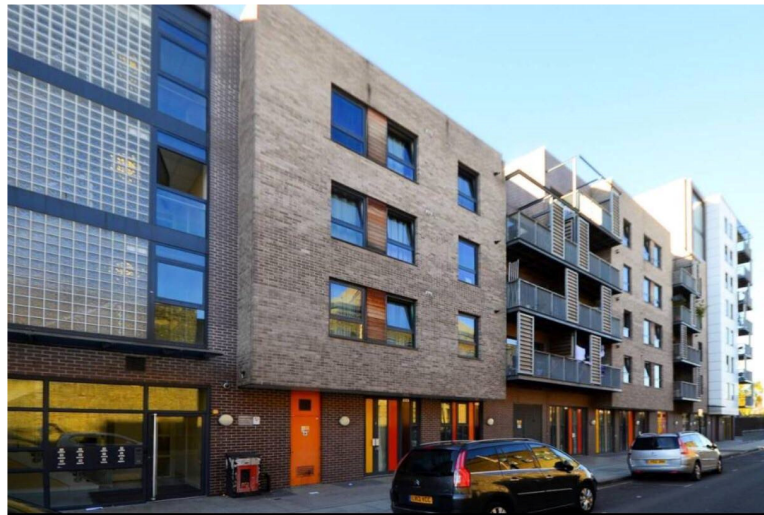
Role: Associate and Urban Designer

©Broadway Malyan, UK

- Belfast Northern Ireland Office opening
- Site Architect
- Principle Agent
- Working Drawing packages
- Design to completion

BroadwayMalyan^{BM} 25

LEVEN ROAD, POPLAR, UNITED KINGDOM



Client:

Fleming Construction for Swan Housing Association
40 Leven road, London e14 0GZ

Size:

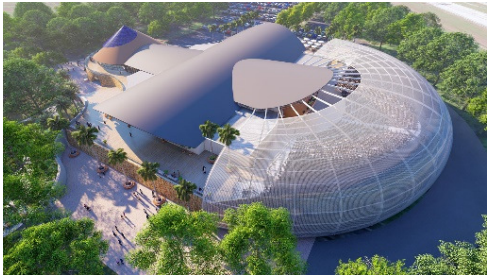
- 66 residential units
- 21 commercial units, constructed using offsite manufactured modular units
- Affordable, mixed-use residential and artists' studio development

Role: Associate

- ©BPTW Partnership, UK
- Design to Completion
 - Site Architect



CHURCH HEAD QUARTERS MASTERPLAN WITH RESIDENTIAL ACCOMMODATION TAMPA FLORIDA, USA



Client:
Revival Ministries International
Size:

- River at Tampa Bay Church, River Bible Institute, River School of Worship, and River School of Government
- Tampa, Florida, USA
- Accommodation Apartments 520

Role: Lead Architect and Urban Designer
©Dennis Moss Partnership

- Feasibility Studies
- Concept Design
- Council Approval
- Visit to Florida 2018



PORT BAKU RESIDENCE, BAKU, AZERBAIJAN



Client:

Pasha Construction

Size:

- 33 storeys
- Mixed Use Residential led development in the historic city of Baku, Azerbaijan.

Role: Associate

©Broadway Malyan

- Design Architect
- BIM integration with all disciplines



BroadwayMalyan^{BM}

Palm Jumeirah, Dubai, United Emirates



Client:

Nakheel

Size:

- 500 Apartments
- 2000 Villas 25 hotels
- 200 Shops of luxury
- 125 km of additional coast created

Role: Architect

©RMJM

- Design Architect based in Dubai
- Masterplanning
- Company representative
- Cad Co-Ordinator Packages
- Presentation
- Interior design



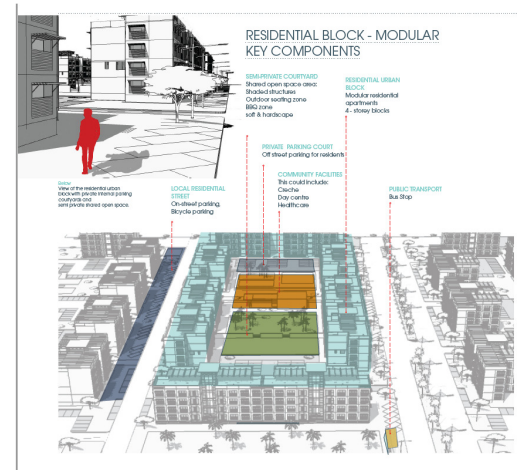
RMJM

JORDAN CITY. CARBON NEUTRAL CITY, AMMAN JORDAN



CONCEPT	ARCHETYPE	NEIGHBOURHOOD MORPHOLOGY
	ARCADE • LOWER GROUND LEVEL • RESIDENTIAL ABOVE • LOCATED TO MAJOR STREETS • PUBLIC SQUARES	
	CLUSTER • RESIDENTIAL AND FACILITY • MIXED RESIDENTIAL BUILD-UPS • (IN REL)	
	LINEAR • RESIDENTIAL AND FACILITY • ROW HOUSING	
	DISTRICT • MIXED-USE • COMMERCIAL AREA • BLOSSOMING NEIGHBOURHOOD	

RESIDENTIAL SQUARES



Client:

WSP

Size:

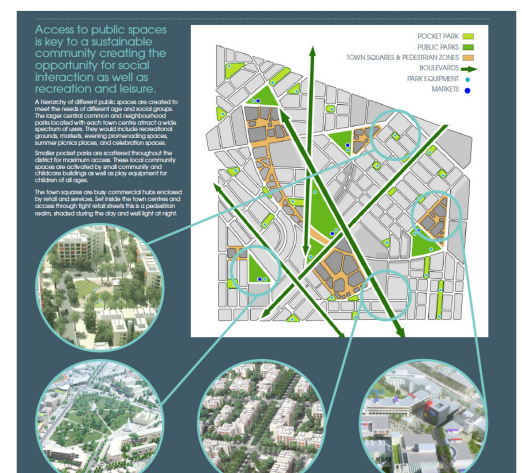
- 600 hectares Masterplanning
- 200 000 Housing Modular

Role: Associate

©Broadway Malyan

- City Establishment
- Client Representative
- Design Architect / Associate
- Modular House Design
- Masterplanning

Genius Loci Spirit of Place (pty)ltd practise profile



BroadwayMalyan^{BM}

COMMITMENT

AFRICA



South African Council
for the Architectural Profession



SOUTH AFRICAN
INSTITUTE OF
ARCHITECTS
SAIA
saarchitecture.co.za



pia
PRETORIA
INSTITUTE FOR
ARCHITECTURE
A REGION OF SAIA

Genius Loci is committed to innovation in the design of life changing environments. **We understand the value and importance of time, cost and quality in a project.** We are committed to deliver projects sustainability, on time in budget.

In order to ensure the relevance of the spaces we design, we conduct research into current and projected trends in the way people live and interact with the built environment.

We are professionals

INTERNATIONAL



RIBA 
Royal Institute of
British Architects



Our motto:

'How we
design
today
dictates how we
live tomorrow' Ronel

Genius Loci
Spirit of Place (Pty) Ltd

www.geniusloci.group

MEMBERSHIP

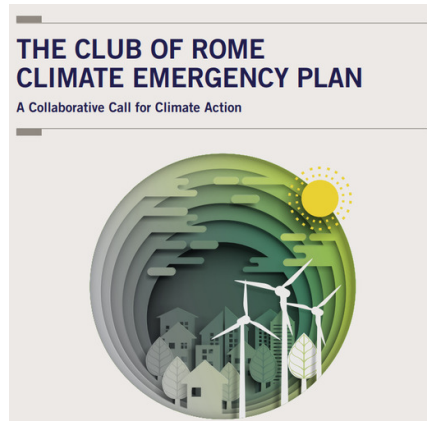
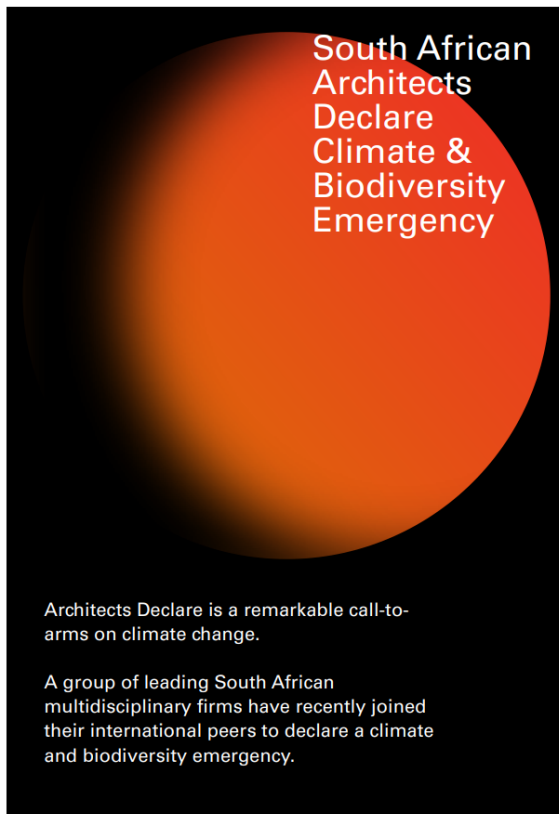


We were invited to the prestigious Club of Rome Summit.

The Club of Rome Summit 2019 took place on November 6 in Stellenbosch, South Africa.

The conference brought together leading scientists, policy and decision-makers, business leaders as well as activists from around the world.

Genius Loci Spirit of Place (Pty)Ltd) was the only Stellenbosch practise invited to attend and discuss the climate crisis.

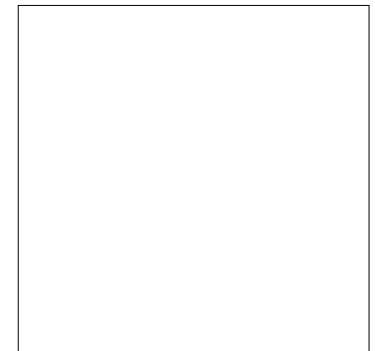
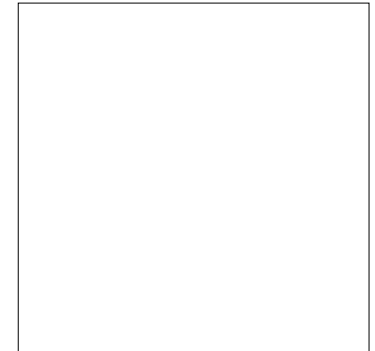


Genius Loci Spirit of Place (Pty)Ltd) has launched the South African Architects Declare climate and Biodiversity Emergency along 69 other countries, in 2019. We are currently the only South African practise on the board of this world wide declaration

BUILT ENVIRONMENT DECLARES is a global petition uniting all strands of construction and the built environment. It is both a public declaration of our planet's environmental crises and a commitment to take positive action in response to climate breakdown and biodiversity collapse.

Our commitment to sustainability and regeneration

ACCOLADES



We are sustainable and care for our environment.

Our motto:



COMMITMENT

Genius Loci is committed to innovation in the design of life changing environments. **We understand the value and importance of time, cost and quality in a project.** We are committed to deliver projects sustainability, on time in budget.

In order to ensure the relevance of the spaces we design, we conduct research into current and projected trends in the way people live and interact with the built environment.

We are professionals

Our motto:

'How we design today dictates how we live tomorrow' Ronel

Genius Loci Spirit of Place (Pty) Ltd

www.geniusloci.group



DIRECTOR’S CV

RESOURCES ALLOCATED CV’s per project

RONEL WIESE, FOURIE

PROFESSIONAL EXPERIENCE

•Ronel is a full time working Architect involved in all stages and all scales of projects adding value to projects by research , experience and business opportunities. She has over 22 years' experience gained in a number of design-oriented practices with varied backgrounds and client base.

•Ronel is now a leading specialist in the field of design for people in their later age and have worked in practises all over the world specialising in retirement. She is a fierce advocate of "Contributing at Every Age: Designing for Generational Impact". She is currently completing her PhD in Architecture with design at the University of the Free State, collaborating with the New School of Architecture in San Diego, her topic is: Neuroarchitecture: Designing for the Third generation. Retirement & Dementia. (part Time)

Membership



- RIBA (Royal Institute of British Architects– Chartered Architect Membership Number: 11534949
- AMBA (Association of Master of Business Administration) Membership No. 2001037
- SACAP (South African Council for the Architectural Profession) - Membership Number: PrArch49210947
- South African Institute of Architect Membership No: 9270
- Pretoria Institute of Architects Membership No: FO1741
- University of the Free State – Doctor of Philosophy (Architecture with Design) Student number 1994103685
- Internal Auditor ISO 19011 NSF International
- 2017-2020 Chairperson of Stellenbosch Heritage Foundation
- Heritage Association of South Africa Committee member

2017 – 2020

South Africa

Senior Architect

Projects:

- Various Retirement
- Retirement research
- Zanddrift, Paarl
- Ongos City establishment, Namibia,
- Acorn Creek

Education & Qualifications

2020-- Swiss Institute for Disruptive Innovation, Space Architecture

2018 - ongoing – PhD in Architecture with design, University of the Freestate, South Africa: Neuro-Architecture: Retirement resorts and dementia villages.

Computer software:

Autodesk, Adobe Suite, GIMP, PageMaker, Coral Draw, Microsoft Office, Publisher, Typing 45w.p.m, Sketchup, InDesign, Microsoft Project, Cafgen, NBS, Specification Manager, Revit (Basic), Microsoft Office, Pastel, Smart Sheet, Google App, Dropbox, G-Drive, Teams, Zoom, Skype and TeamViewer.

2017 – Internal Auditor, NSF international, based on ISO 19011

2016 – Doctoral Research Training Programme, University of Stellenbosch Executive development ltd, South Africa

2015 – HACCP certification

2005- MBA –Master of Business Administration (triple-accredited), The Open University ,United Kingdom

2004-RIBA/ARB Part 3 -Certificate in Professional Practice and Management in Architecture, The Bartlett University College, London (Part Time), United Kingdom

1999 - Degree, B. Arch, University of the Free State, Bloemfontein, South Africa

1997 – Degree, B.Arch. Stud, University of the Free State, Bloemfontein, South Africa

1998 - Graphic design – Technikon Free State

1998 - Course in Business administration, University of the Free State, Bloemfontein, South Africa

1993 - Grade 12 Diamantveld High School, Kimberley, South Africa (Honours Blue Blazer)

1992 – International Language exam, International Mathematical Olympiad, Silver Medal

2011 – 2016

Biggest Carrot and Beetroot farming. Game farming. South Africa

2009-2011

PRP Architects

Senior Architect

Projects:

- Later Life Architect
- Various Schemes

2005-2010

Broadway Malyan, UK

Associate

Projects:

- The Obel
- Lanyon Place
- Royal Mail
- Jordan City

2002-2005

RMJM,UK/Dubai

Architect

Projects:

- Scottish Parliament
- (Edinburgh)
- Palm Island design
- (Dubai)
- BCUC university building UK

Genius Loci Spirit of Place (refer to project portfolio)

Director

Franssoa is a full time working Architect and Urban Designer. Working on all stages and all scales of a projects. Adding value to project knowledge with a can do attitude of in time, on budget.

Franssoa has over 22 years' experience; with the last 13 years' as senior manager in varied industries such as architecture and agriculture. Sustainability is a keen interest that can be followed throughout his career, from an ecotourism resort design project in his final year at university to a master's degree in sustainable agriculture and most recently as a doctoral candidate in Biomaterials. Most of his architectural experience is UK and South African based with some other international project consultation.

Franssoa follows a pragmatic approach and focus on realistic solutions to a challenge. He likes to get involved on all levels of a project, including the overall broad concept as well as more specific detailed issues.

In his career thus far, he has been fortunate to work with people from all walks of life and have experience in motivating team members to work to tight deadlines, often under stressful circumstances. He naturally gravitate towards a role of coordinator and setting work programmes and deadlines.

KEY AREAS OF EXPERTIES

- Project management and delivery.
- Client and consultant coordination.
- Feasibility studies and project Inception reporting.
- Concept Design and detail development.
- Regulatory and statutory compliance.
- Technical detailing and Construction package.
- Best practice and quality assurance protocols.

Membership

- SACAP (South African Council for the Architectural Profession) - Membership Number: PrArch 53001876
- University of the Free State – Doctor of Philosophy (Architecture with Design)

Education & Qualifications

2012 MSA - Master's degree in sustainable agriculture (*cum laude*), University of the Free State, Bloemfontein, South-Africa.

Computer software:

- AutoCAD 2D & 3D Excellent
- Photoshop – Very good
- Revit - Excellent
- Google Sketch-up Intermediate
- Word – Excellent
- Excel – Excellent
- Publisher – Excellent
- Coral Draw – Excellent

2003 RIBA / ARB Part 3. The Bartlett University, London. Certificate in professional practice and management in architecture.

1998 – 1999 Baccalaureus Architectura (B.Arch.), University of the Free State, Bloemfontein.

1995 – 1997 Baccalaureus Architectura Studiorum (B. Arch. Stud.)

Extra activities Earth construction team, part time (1997 - 1998)

Extra courses Presentation Skills Course (2008)
Datacad 7 - 2D design & 3D modelling (1998)

PROFESSIONAL EXPERIENCE

2016 – 2020

South Africa

Senior Architect and Urban Designer

As part of the senior management team my role involved business planning, human resources and staff time management, company protocols and internal quality control. I also managed a team of people to produce work to schedule and ensure that the company philosophy of sustainable development is seen through into the final product. I worked very closely with all team members to take large scale projects from Concept sketches to architecture.

I was directly responsible for the initial architectural design, client approval thereof and further development into a final scheme for example the award winning Buh-Rhein. I coordinate the different Local Authority applications and oversee production drawings through various stages of the project.

2011 – 2016

Biggest Carrot and Beetroot farming. Game farming. South Africa

2006 – 2011

BPTW partnership –UK Project Leader

Various Housing Associations Leven Road,(refer to portfolio)

Workstage's 1-6

2000 – 2006

Nigel Bird Architect–UK Associate

All Practise related work



Genius Loci

Spirit of place (pty)ltd

‘How we
design
today
dictates how we
live tomorrow’ Ronel

Genius Loci
Spirit of Place (Pty) Ltd)

www.geniusloci.group

GENIUS LOCI

SPIRIT OF PLACE (Pty)Ltd

South Africa Reg. No. 2018/210126/07

UK Company Number 12193161

Project Management - Urban Design – Architecture- Interior Design – Landscape Architecture – **Neuro**Architecture – **Agri**itecture

Tel; +27 (0)76 669 5292

E-Mail: ronel@geniusloci.group

Website: www.geniusloci.group