

Project Estimate	
Building renovation	\$575,000
Wrought iron Fence	\$ 75,000
Electronic campus-wide security system for controlled access and safety	\$ 45,000
Furnishings (under-bed storage)	\$ 12,500
Landscaping and campus lighting for safety	\$ 30,000
Total	\$ 737,500

What Happens Next?

All gifts exceeding funds needed for Phase I will be set aside in an interest-bearing capital funds account for Phase II. Phase II includes dining room renovation, centralized offices and improvements to our men's dorm.

just imagine



"This place is different. We found out they had expectations of us when we applied. I believe they really want to help us find a better life by dealing with the problems that landed us here."



"I was worried that my little boy would have his birthday without anything special. The Mission held a party for him, complete with a cake and gift. Since then, we have been invited to parties for other children."

Phase I Tributes and Memorials

Inherent in the human heart is the desire to remember the lives of those who have influenced worthwhile causes over the generations and those whose commitments today, set an inspiring example. Community Rescue Mission considers it a privilege to express gratitude and appreciation through this Tributes and Memorials Program associated with our capital campaign.

To designate an item as a tribute or memorial, the gift should be equal to the estimated cost as presented. In making such a gift, the donor recognizes the timing for construction and detail are not necessarily influenced by a commitment, and Mission leaders must retain the ability to appoint proper uses of all facilities based upon ministry needs. Interior design will be determined by an appointed board committee formed for this purpose which will work with the architect. Tribute and memorial gifts carry no obligation for ongoing maintenance of the facility, though it is hoped that the donor may consider future endowment for this purpose.

For questions or additional information about adopting a tributes and memorials, please contact Britney Campbell, Director of Marketing and Development. Tribute and Memorial items are available on a first come first reserved basis.

Resident Room 1	\$ 20,000
Resident Room 2	\$ 40,000
Resident Room 3	\$ 40,000
Resident Room 4	\$ 20,000
Resident Room 5	\$ 20,000
Resident Room 6	\$ 40,000
Resident Room 7	\$ 40,000
Resident Room 8	\$ 20,000
Campus-wide security system for controlled access and safety	\$ 45,000
Furnishings-under-bed storage	\$ 12,500
Fencing around campus	\$ 75,000
Landscaping and outdoor lighting	\$ 30,000



Instill Hope Empower Lives Campaign

Phase I: Family Renovation & Campus Improvements

If



- Our missional goal is to instill hope and empower lives among the families and children we serve, and
- We extend Christ-like hospitality, safe transitional shelter, nutritious meals, case management, life-skill assistance, health monitoring and spiritual renewal to help families get back on their feet;

And



- God continues to enable and bless our daily efforts by sending people to partner with us in giving generously of their time and resources to fulfill this mission; and
- Daily we are entrusted with more and more families and children to serve;

Then



- We must remove facility limitations which hold us back and renovate our well-worn family housing to create a more welcoming, accessible, home-like place where families can live while restoration takes root and grows in their lives.
- Accomplishing this vision will require prayer, bold faith and extravagant generosity.





The Instill Hope Empower Lives Capital Campaign

Phase I Family Center Renovation & Campus Improvements

Our long days of planning now pale by comparison as we prepare to equip our inspired vision with a focus on families and children. That does not mean we will not serve the needs of a few other serious-minded people who need emergency care to get back on their feet. It does mean, however, we will plan our campus renovation and programs to accommodate families and children foremost, as shown in Phase I of our campus renovation plan.

This plan enlivens our campus and aligns our facilities with our mission. Nothing like this is currently available in Fort Smith to minister and serve the complex life needs of children, youth, and families. The design removes any stigma of a "shelter" and replaces old images with a welcoming, safe, home-like environment families can call home during their life transition.

The capital campaign will seek three-year commitments from friends to provide funding for the renovation.

A Welcoming Place for Families



Beautiful Iron Fencing for Safety

Wrought iron fencing will replace the old chain-link fence which now surrounds the campus. Besides adding to the beauty of the neighborhood, and creating a more home-like setting, wrought iron fencing is much stronger than other common fencing materials such as wood or vinyl. Because wrought iron is so hard to break, it is durable and secure. This type of fencing will also work well with the campus-wide security system to allow controlled access and monitoring for safety.

Electronic Security Access

Controlling campus access for safety has been a long-time problem at Community Rescue Mission. We literally have no control with the present keylocks throughout the campus. The present system does not work for emergencies, residents returning from shift work, nor deterring the public from wandering in and out of open gates

Key Features of Phase I and the Family Center

Windows in each unit will let in the light of God's creation

An individual private bath in each unit with new showers and fixtures

Attractive, welcoming, lighted front porch with private entry

New paint, walls, ceilings and floors

LED lighting throughout and climate control for comfort

A double key lock connecting door between rooms to allow flexibility in use as needed

New furnishings, beds and mattresses

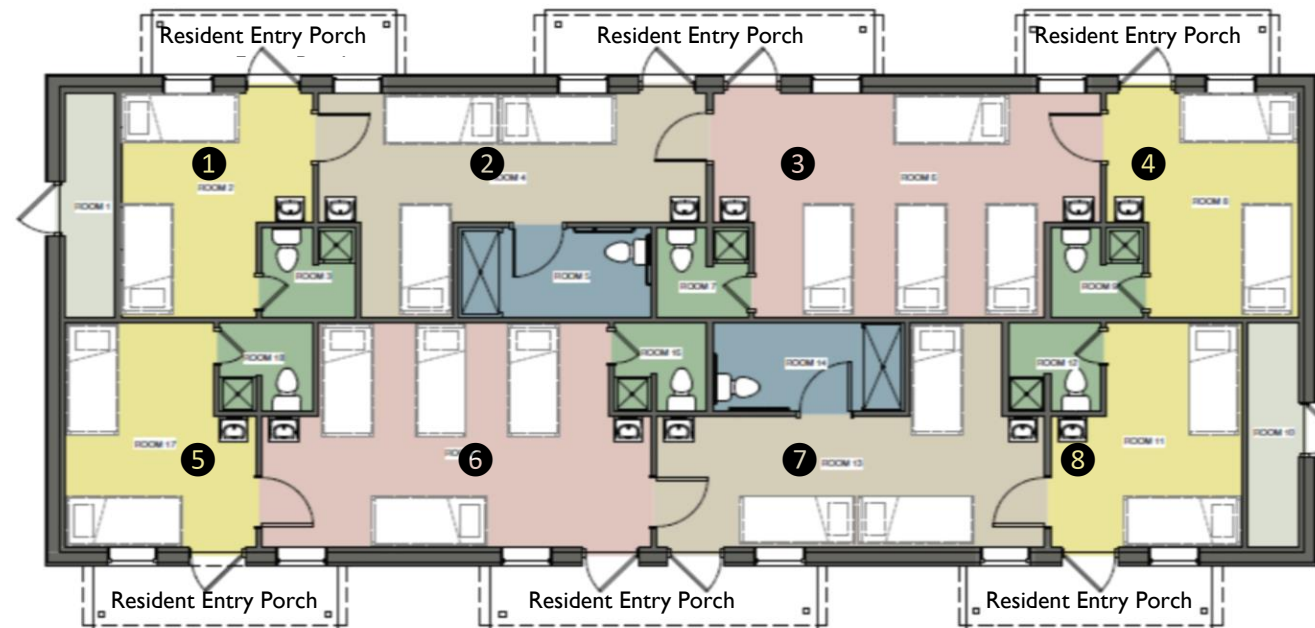
2 of the 8 family units are fully accessible, meeting ADA requirements

New computerized security system for campus-wide safety and controlled access

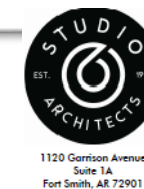
New attractive, iron fencing with an electronic gate system for security

Landscaping to add to the beauty of the campus and neighborhood

Floorplan of Renovated Space



undetected. An electronic security access system provides maximum safety for residents and staff. It allows the staff and case managers wise control of residents coming and going, those not abiding by established curfews and it keeps our populations segregated. From a computer program, we will be able to control access to any part of the campus at any time during and after hours. When someone leaves we will no longer need to re-key or change the lock.



1120 Garrison Avenue
Suite 1A
Fort Smith, AR 72901