

The **Affordable**
Alternative to Wood

CONCRETE

 **Lonestar**
Prestress
Manufacturing Inc.

Utility Pole Direct Embedment 25-45 Feet



Utility 25-45 Feet Technical Chart

Grade B Construction

Direct Embedment

CATALOG NUMBER	POLE LENGTH (Ft.)	CONCRETE POLE CLASS	POLE WEIGHT (Lbs.)	HT. ABOVE GRADE (Ft.)	POLE SIZE (In.)		ANSI GROUNDLINE MOMENT (Ft. Lbs.) *	ULTIMATE GROUNDLINE MOMENT (Ft. Lbs.) **
					TIP	BUTT		
251302-4	25	5-C	963	20.5	4.00	8.06	22,220	23,750
253302-0	25	4-C	1,667	20.5	6.00	10.06	27,750	38,250
253302-0	25	3-C	1,667	20.5	6.00	10.06	35,150	38,250
253302-4	25	2-C	1,703	20.5	6.00	10.06	44,400	48,250
253302-8	25	1-C	1,740	20.5	6.00	10.06	55,500	56,080
254302-4	25	H1-C	2,424	20.5	7.63	11.69	68,450	70,160
254302-8	25	H2-C	2,464	20.5	7.63	11.69	83,250	85,080
301302-4	30	5-C	1,327	25.0	4.00	8.88	27,600	29,330
303302-0	30	4-C	2,220	25.0	6.00	10.88	34,500	43,160
303302-4	30	3-C	2,264	25.0	6.00	10.88	43,700	57,750
303302-4	30	2-C	2,264	25.0	6.00	10.88	55,200	57,750
303302-8	30	1-C	2,308	25.0	6.00	10.88	69,000	69,000
304302-8	30	H1-C	3,213	25.0	7.63	12.50	85,100	99,330
305302-4	30	H2-C	4,066	25.0	9.00	13.88	103,500	105,410
351302-4	35	5-C	1,763	29.5	4.00	9.69	33,000	35,250
353302-0	35	4-C	2,863	29.5	6.00	11.69	41,250	48,000
353302-4	35	3-C	2,914	29.5	6.00	11.69	52,250	67,830
353302-4	35	2-C	2,914	29.5	6.00	11.69	66,000	67,830
353302-8	35	1-C	2,966	29.5	6.00	11.69	82,500	82,500
354302-8	35	H1-C	4,068	29.5	7.63	13.31	101,750	115,410
355302-8	35	H2-C	5,153	29.5	9.00	14.69	123,750	150,160
401302-4	40	5-C	2,279	34.0	4.00	10.50	38,400	41,580
403302-0	40	4-C	3,601	34.0	6.00	12.50	48,000	53,000
403302-4	40	3-C	3,660	34.0	6.00	12.50	60,800	78,580
403302-4	40	2-C	3,660	34.0	6.00	12.50	76,800	78,580
403302-8	40	1-C	3,719	34.0	6.00	12.50	96,000	96,000
404302-8	40	H1-C	5,032	34.0	7.63	14.13	118,400	131,910
405302-8	40	H2-C	6,317	34.0	9.00	15.50	144,000	168,910
453302-0	45	5-C	4,442	38.5	6.00	13.31	43,800	57,750
453302-0	45	4-C	4,442	38.5	6.00	13.31	54,750	57,750
453302-4	45	3-C	4,508	38.5	6.00	13.31	69,350	90,410
453302-4	45	2-C	4,508	38.5	6.00	13.31	87,600	90,410
453302-8	45	1-C	4,574	38.5	6.00	13.31	109,500	111,330
454302-8	45	H1-C	6,111	38.5	7.63	14.94	135,050	149,500
455302-8	45	H2-C	7,607	38.5	9.00	16.31	164,250	187,580

* The ultimate groundline moment shown corresponds to the equivalent ANSI pole class load for concrete poles. The moments shown are not necessarily the maximum ultimate groundline moment for that particular pole.

** Ultimate groundline moment for the particular pole.

Utility Pole Direct Embedment 50-70 Feet

Utility 50-70 Feet Technical Chart

Grade B Construction

Direct Embedment

CATALOG NUMBER	POLE LENGTH (Ft.)	CONCRETE POLE CLASS	POLE WEIGHT (Lbs.)	HT. ABOVE GRADE (Ft.)	POLE SIZE (In.)		ANSI GROUNDLINE MOMENT (Ft. Lbs.) *	ULTIMATE GROUNDLINE MOMENT (Ft. Lbs.) **
					TIP	BUTT		
503302-0	50	5-C	5,392	43.0	6.00	14.13	49,200	62,580
503302-0	50	4-C	5,392	43.0	6.00	14.13	61,500	62,580
503302-4	50	3-C	5,465	43.0	6.00	14.13	77,900	102,580
503302-4	50	2-C	5,465	43.0	6.00	14.13	98,400	102,580
503302-8	50	1-C	5,538	43.0	6.00	14.13	123,000	127,830
504302-8	50	H1-C	7,312	43.0	7.63	15.75	151,700	169,330
505302-8	50	H2-C	9,031	43.0	9.00	17.13	184,500	205,830
553302-0	55	5-C	6,457	47.5	6.00	14.94	54,600	67,410
553302-4	55	4-C	6,537	47.5	6.00	14.94	68,250	115,000
553302-4	55	3-C	6,537	47.5	6.00	14.94	86,450	115,000
553302-4	55	2-C	6,537	47.5	6.00	14.94	109,200	115,000
553302-8	55	1-C	6,618	47.5	6.00	14.94	136,500	145,250
554302-8	55	H1-C	8,642	47.5	7.63	16.56	168,350	188,500
603302-0	60	5-C	7,644	52.0	6.00	15.75	60,000	72,250
603302-4	60	4-C	7,732	52.0	6.00	15.75	75,000	127,000
603302-4	60	3-C	7,732	52.0	6.00	15.75	95,000	127,000
603302-4	60	2-C	7,732	52.0	6.00	15.75	120,000	127,000
603302-8	60	1-C	7,820	52.0	6.00	15.75	150,000	163,830
604302-8	60	H1-C	10,107	52.0	7.63	17.38	185,000	206,000
653302-4	65	5-C	9,055	56.5	6.00	16.56	65,400	137,910
653302-4	65	4-C	9,055	56.5	6.00	16.56	81,750	137,910
653302-4	65	3-C	9,055	56.5	6.00	16.56	103,550	137,910
653302-4	65	2-C	9,055	56.5	6.00	16.56	130,800	137,910
653302-8	65	1-C	9,151	56.5	6.00	16.56	163,500	183,080
703302-4	70	5-C	10,514	61.0	6.00	17.38	70,800	147,750
703302-4	70	4-C	10,514	61.0	6.00	17.38	88,500	147,750
703302-4	70	3-C	10,514	61.0	6.00	17.38	112,100	147,750
703302-4	70	2-C	10,514	61.0	6.00	17.38	141,600	147,750
703302-8	70	1-C	10,617	61.0	6.00	17.38	177,000	201,830



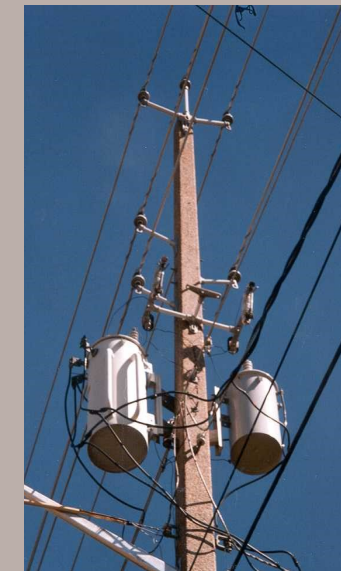
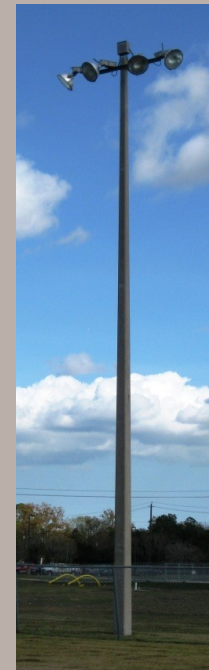
* The ultimate groundline moment shown corresponds to the equivalent ANSI pole class load for concrete poles. The moments shown are not necessarily the maximum ultimate groundline moment for that particular pole.

** Ultimate groundline moment for the particular pole.

Maintenance-Free, Prestressed, Concrete Poles

Right for the Job... Right for the Environment!

When it comes to longevity, concrete is the solid solution. The smooth flat surfaces are ideal for mounting hardware. Bolt holes can be cast in or easily field drilled. Woodpecker and/or insect damage, or even rot, cannot happen to concrete. You and your customers get the added benefit of a clean attractive visual profile that our engineered poles provide.



 **Lonestar
Prestress
Manufacturing Inc.**

Lonestar Prestress Mfg., Inc.
8892 HWY 159 East
Bellville, TX 77418
Phone: (713) 896-0994
Fax: (713) 896-0762
www.lonestarprestress.com

STRONG LONG-LASTING CONCRETE POLES FOR POWER DISTRIBUTION & LIGHTING