

SIDE C

41'-0" (ROOF)
40'-0" (EXTERIOR)
38'-11" (INTERIOR)

SIDE B

61'-0" (ROOF)
60'-0" (EXTERIOR)
58'-11" (INTERIOR)
10'-6" (ROOF R1) 10'-0" (ROOF R2) 10'-0" (ROOF R2) 10'-0" (ROOF R2) 10'-0" (ROOF R2) 10'-6" (ROOF R1)

5a

4a

6 1/2" 2

SIDE D

ROOF SLOPE

28'-6" 3'-0" 28'-6"

SIDE A

KEYED NOTES:

- 1 3'-0"x7'-0" INSULATED & GALVANIZED SINGLE STEEL DOOR
- 2 6 1/2" THICK WALLS (TYP.)
- 4a RIBBED ROOF EDGE ON ALL SIDES
- 5a ROOF PANEL JOINT

PRELIMINARY
NOT FOR CONSTRUCTION

SOME DIMENSIONS MAY CHANGE UPON
FINAL REVIEW OF DESIGN.

#6XXX
40'x60'x9'SP
EXTERIOR FINISH
(T.B.D.)

NO.	DATE	REVISION	APP.

DRAWING IS NOT TO
SCALE IF BAR DOES
NOT MEASURE 1"

ROOF AND FLOOR PLAN
(FLOOR SLAB BY OTHERS)

PROPRIETARY AND CONFIDENTIAL RIGHTS ARE INCLUDED IN THE
INFORMATION DISCLOSED HEREIN. NEITHER THIS DOCUMENT NOR
THE INFORMATION DISCLOSED HEREIN SHALL BE REPRODUCED OR
TRANSFERRED TO OTHER DOCUMENTS OR BE USED OR
DISCLOSED TO OTHERS FOR MANUFACTURING OR FOR ANY
PURPOSE EXCEPT AS SPECIFICALLY AUTHORIZED IN WRITING BY
LONESTAR PRESTRESS MFG., INC. TEXAS PROFESSIONAL
ENGINEERS REG. NO. F-9055.

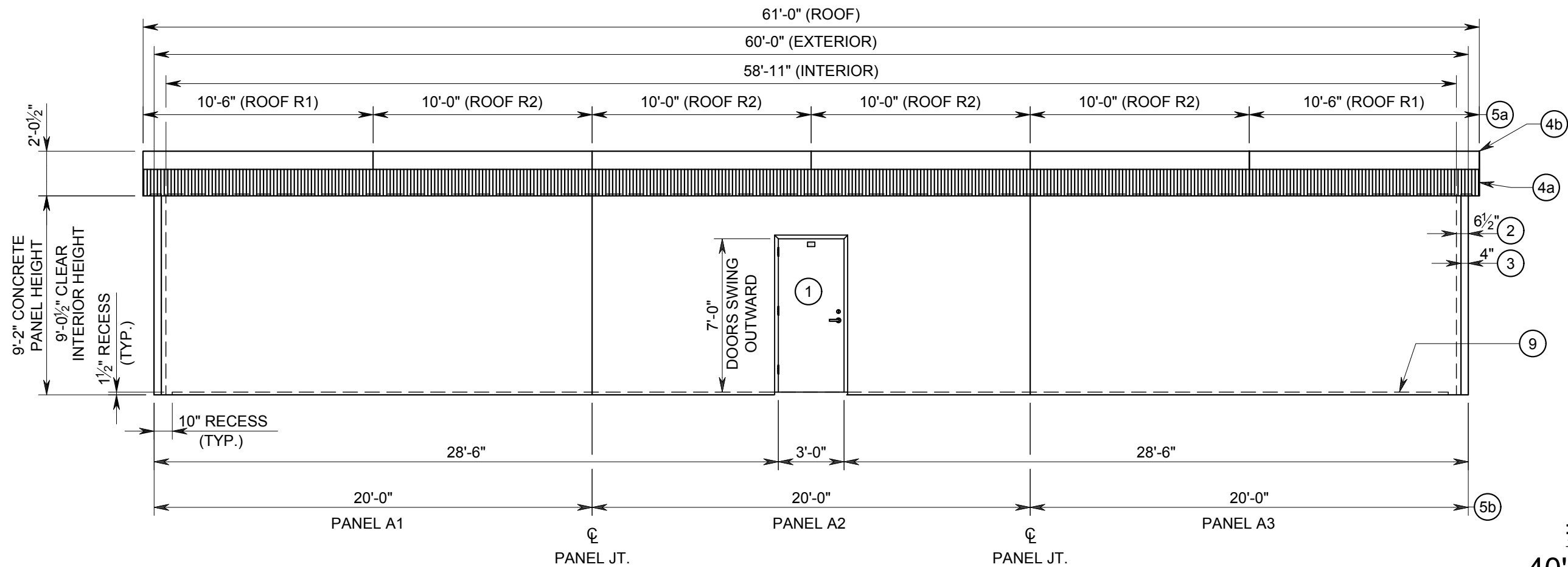


8892 Highway 159 East
Houston, TX 77418
www.lonestarprestress.com
Tel: (713) 896-0994
Fax: (713) 896-0762

LONESTAR PRESTRESS MFG., INC.			
SHEET: 1	FILE: 6xxx 40x60x9SP.dwg		
SCALE: 1/8"=1'-0"	DATE: 10/26/18	JOB: 6XXX	
DSN: TFS	DRWN: BD	CHKD: TFS	QTY: 1
40'x60'x9' INSULATED PRECAST CONCRETE BUILDING			
PRECAST BUILDING			

KEYED NOTES:

- ① 3'-0"x7'-0" INSULATED & GALVANIZED SINGLE STEEL DOOR
- ② 6½" THICK WALLS (TYP.)
- ③ 4" SMOOTH (TYP.)
- ④a RIBBED ROOF EDGE ON ALL SIDES
- ④b R-19 SUPER THERM ROOF COATING
- ⑤a ROOF PANEL JOINT
- ⑤b WALL PANEL JOINT
- ⑨ FINISHED FLOOR



SIDE A

#6XXX
40'x60'x9'SP
 EXTERIOR FINISH
 (T.B.D.)

**PRELIMINARY
NOT FOR CONSTRUCTION**

SOME DIMENSIONS MAY CHANGE UPON
FINAL REVIEW OF DESIGN.

NO.	DATE	REVISION	APP.

DRAWING IS NOT TO SCALE IF BAR DOES NOT MEASURE 1"

ELEVATION

PROPRIETARY AND CONFIDENTIAL RIGHTS ARE INCLUDED IN THE INFORMATION DISCLOSED HEREIN. NEITHER THIS DOCUMENT NOR THE INFORMATION DISCLOSED HEREIN SHALL BE REPRODUCED OR TRANSFERRED TO OTHER DOCUMENTS OR BE USED OR DISCLOSED TO OTHERS FOR MANUFACTURING OR FOR ANY PURPOSE EXCEPT AS SPECIFICALLY AUTHORIZED IN WRITING BY LONESTAR PRESTRESS MFG., INC. TEXAS PROFESSIONAL ENGINEERS REG. NO. F-9055.

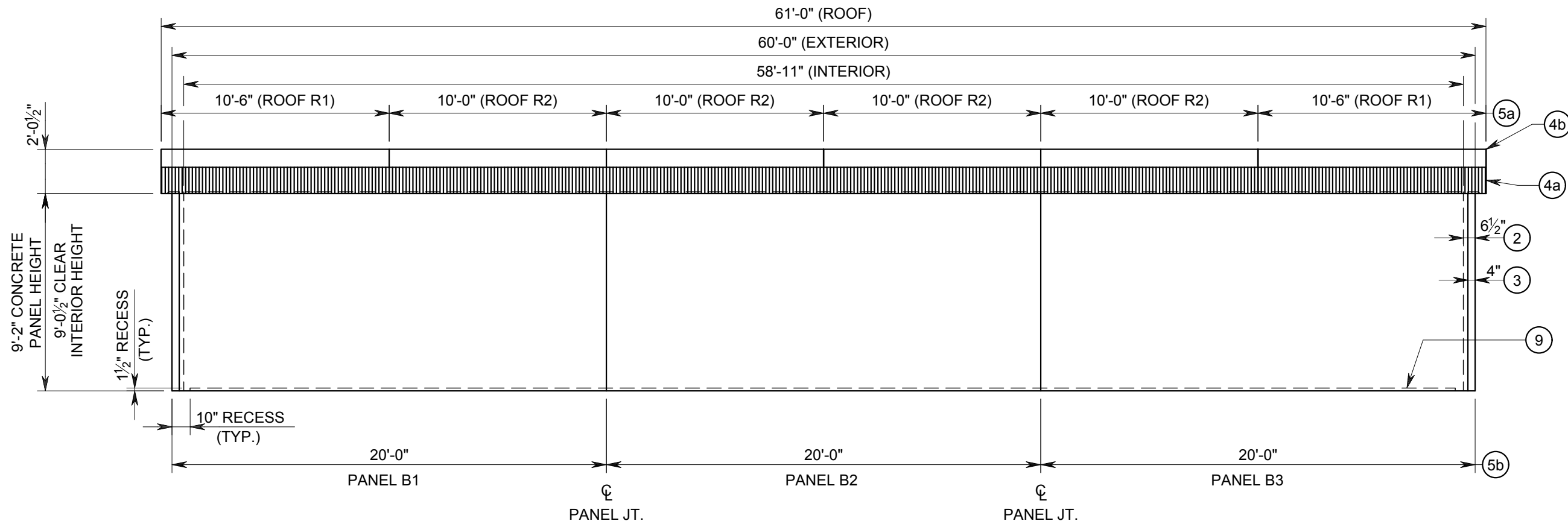


8892 Highway 159 East
 Houston, TX 77418
 www.lonestarprestress.com
 Tel: (713) 896-0994
 Fax: (713) 896-0762

LONESTAR PRESTRESS MFG., INC.			
SHEET: 2	FILE: 6xxx 40x60x9SP.dwg	DATE: 10/26/18	JOB: 6XXX
SCALE: 3/8" = 1'-0"	DRWN: BD	CHKD: TFS	QTY: 1
40'x60'x9' INSULATED PRECAST CONCRETE BUILDING			
PRECAST BUILDING			

KEYED NOTES:

- ② 6½" THICK WALLS (TYP.)
- ③ 4" SMOOTH (TYP.)
- ④a RIBBED ROOF EDGE ON ALL SIDES
- ④b R-19 SUPER THERM ROOF COATING
- ⑤a ROOF PANEL JOINT
- ⑤b WALL PANEL JOINT
- ⑨ FINISHED FLOOR



SIDE B

#6XXX
40'x60'x9'SP
 EXTERIOR FINISH
 (T.B.D.)

**PRELIMINARY
NOT FOR CONSTRUCTION**

SOME DIMENSIONS MAY CHANGE UPON FINAL REVIEW OF DESIGN.

NO.	DATE	REVISION	APP.

DRAWING IS NOT TO SCALE IF BAR DOES NOT MEASURE 1"

ELEVATION

PROPRIETARY AND CONFIDENTIAL RIGHTS ARE INCLUDED IN THE INFORMATION DISCLOSED HEREIN. NEITHER THIS DOCUMENT NOR THE INFORMATION DISCLOSED HEREIN SHALL BE REPRODUCED OR TRANSFERRED TO OTHER DOCUMENTS OR BE USED OR DISCLOSED TO OTHERS FOR MANUFACTURING OR FOR ANY PURPOSE EXCEPT AS SPECIFICALLY AUTHORIZED IN WRITING BY LONESTAR PRESTRESS MFG., INC. TEXAS PROFESSIONAL ENGINEERS REG. NO. F-9055.

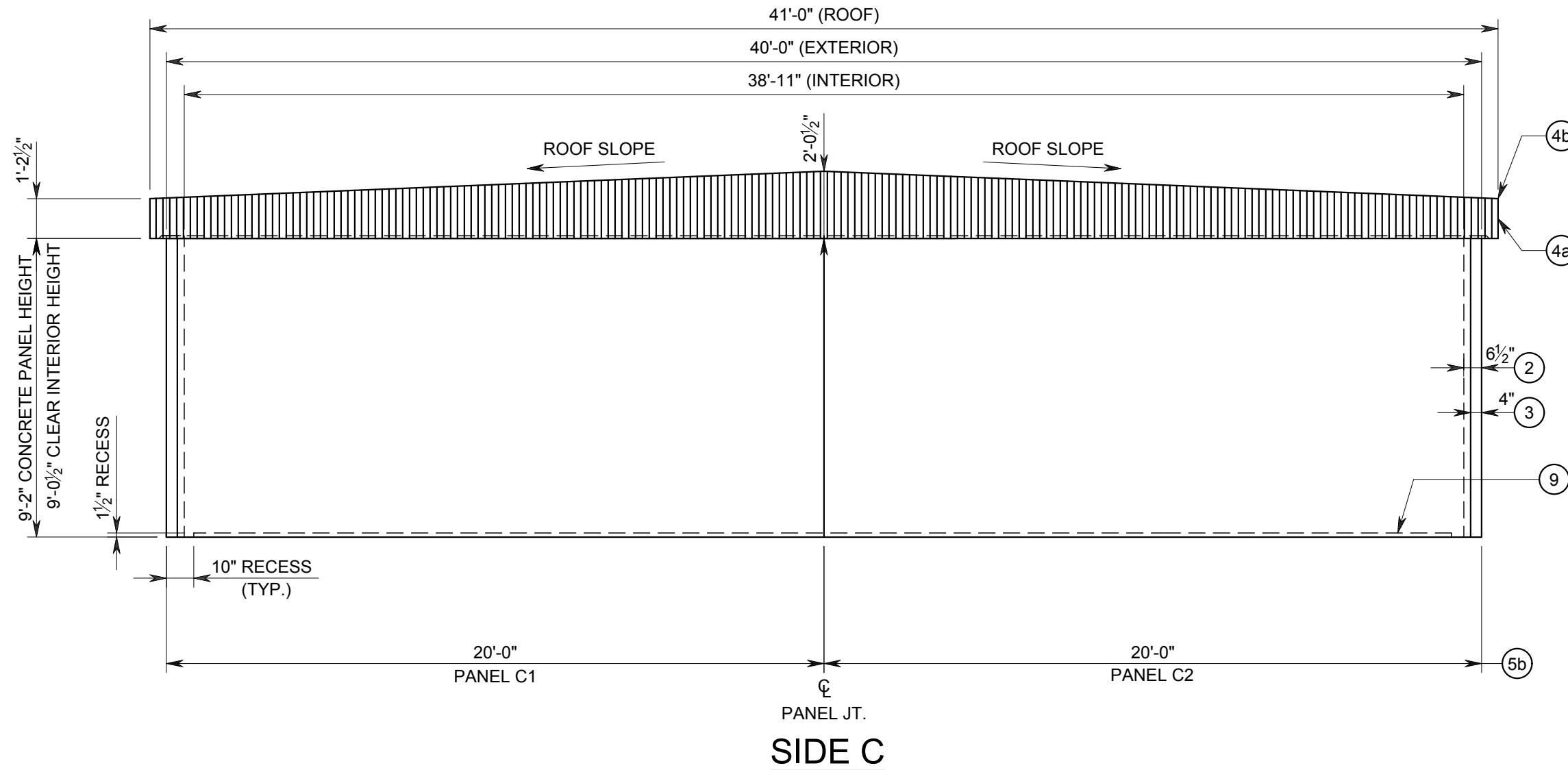


8892 Highway 159 East
 Houston, TX 77418
 www.lonestarprestress.com
 Tel: (713) 896-0994
 Fax: (713) 896-0762

LONESTAR PRESTRESS MFG., INC.			
SHEET: 3	FILE: 6xxx 40x60x9SP.dwg		
SCALE: 3/16" = 1'-0"	DATE: 10/26/18	JOB: 6XXX	
DSN: TFS	DRWN: BD	CHKD: TFS	QTY: 1
40'x60'x9' INSULATED PRECAST CONCRETE BUILDING			
PRECAST BUILDING			

KEYED NOTES:

- ② 6½" THICK WALLS (TYP.)
- ③ 4" SMOOTH (TYP.)
- ④a RIBBED ROOF EDGE ON ALL SIDES
- ④b R-19 SUPER THERM ROOF COATING
- ⑤b WALL PANEL JOINT
- ⑨ FINISHED FLOOR



**PRELIMINARY
NOT FOR CONSTRUCTION**

SOME DIMENSIONS MAY CHANGE UPON
FINAL REVIEW OF DESIGN.

#6XXX
40'x60'x9'SP
EXTERIOR FINISH
(T.B.D.)

NO.	DATE	REVISION	APP.

DRAWING IS NOT TO
SCALE IF BAR DOES
NOT MEASURE 1"

ELEVATION

PROPRIETARY AND CONFIDENTIAL RIGHTS ARE INCLUDED IN THE INFORMATION DISCLOSED HEREIN. NEITHER THIS DOCUMENT NOR THE INFORMATION DISCLOSED HEREIN SHALL BE REPRODUCED OR TRANSFERRED TO OTHER DOCUMENTS OR BE USED OR DISCLOSED TO OTHERS FOR MANUFACTURING OR FOR ANY PURPOSE EXCEPT AS SPECIFICALLY AUTHORIZED IN WRITING BY LONESTAR PRESTRESS MFG., INC. TEXAS PROFESSIONAL ENGINEERS REG. NO. F-9055.

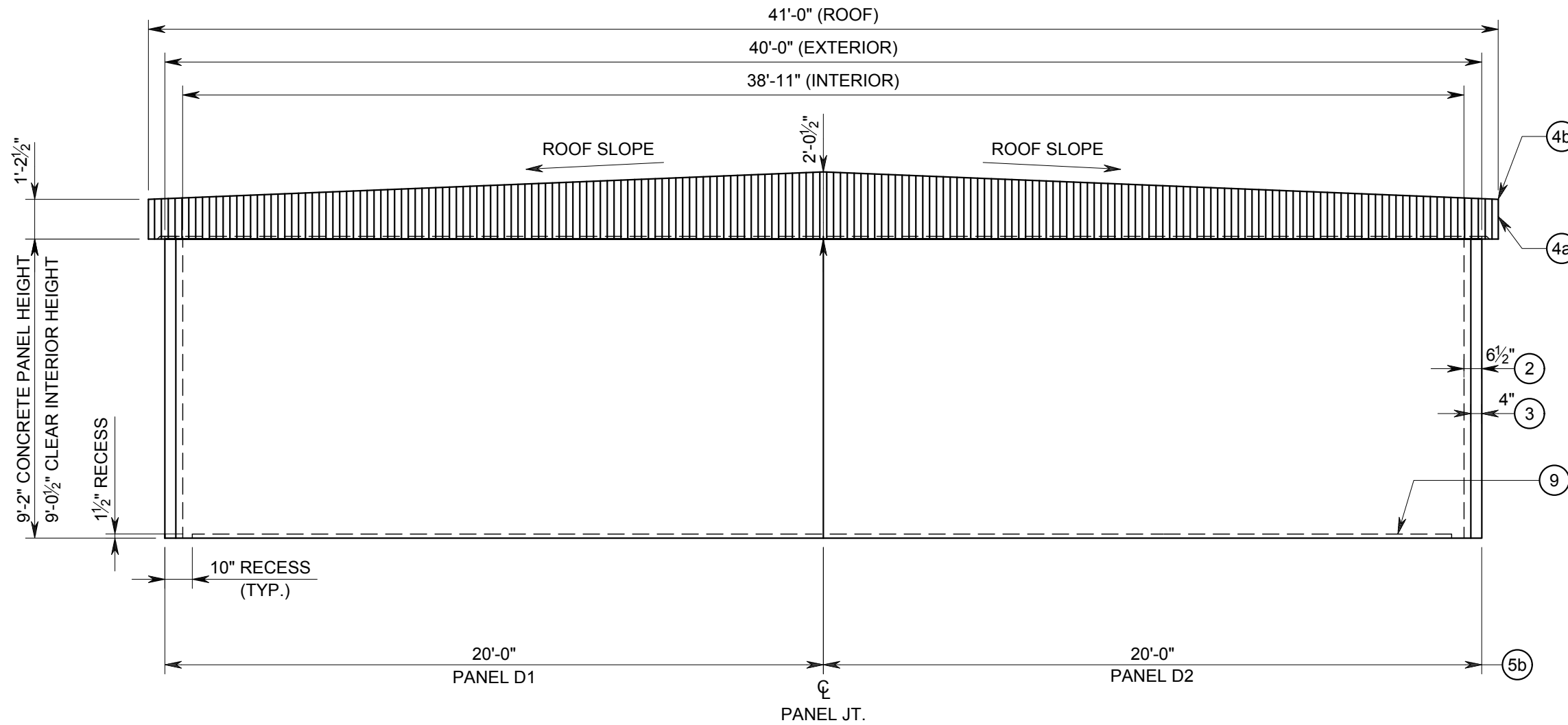


8892 Highway 159 East
Houston, TX 77418
www.lonestarprestress.com
Tel: (713) 896-0994
Fax: (713) 896-0762

LONESTAR PRESTRESS MFG., INC.			
SHEET: 1	FILE: 6xxx 40x60x9SP.dwg	DATE: 10/26/18	JOB: 6XXX
SCALE: 1/4"=1'-0"	DRWN: TFS	CHKD: TFS	QTY: 1
40'x60'x9' INSULATED PRECAST CONCRETE BUILDING			
PRECAST BUILDING			

KEYED NOTES:

- ② 6½" THICK WALLS (TYP.)
- ③ 4" SMOOTH (TYP.)
- ④a RIBBED ROOF EDGE ON ALL SIDES
- ④b R-19 SUPER THERM ROOF COATING
- ⑤b WALL PANEL JOINT
- ⑨ FINISHED FLOOR




SIDE D

#6XXX
40'x60'x9'SP
 EXTERIOR FINISH
 (T.B.D.)

**PRELIMINARY
 NOT FOR CONSTRUCTION**

SOME DIMENSIONS MAY CHANGE UPON
 FINAL REVIEW OF DESIGN.

NO.	DATE	REVISION	APP.

 DRAWING IS NOT TO SCALE IF BAR DOES NOT MEASURE 1"

ELEVATION

PROPRIETARY AND CONFIDENTIAL RIGHTS ARE INCLUDED IN THE INFORMATION DISCLOSED HEREIN. NEITHER THIS DOCUMENT NOR THE INFORMATION DISCLOSED HEREIN SHALL BE REPRODUCED OR TRANSFERRED TO OTHER DOCUMENTS OR BE USED OR DISCLOSED TO OTHERS FOR MANUFACTURING OR FOR ANY PURPOSE EXCEPT AS SPECIFICALLY AUTHORIZED IN WRITING BY LONESTAR PRESTRESS MFG., INC. TEXAS PROFESSIONAL ENGINEERS REG. NO. F-9055.



8892 Highway 159 East
 Houston, TX 77418
 www.lonestarprestress.com
 Tel: (713) 896-0994
 Fax: (713) 896-0762

LONESTAR PRESTRESS MFG., INC.			
SHEET: 1	FILE: 6xxx 40x60x9SP.dwg	DATE: 10/26/18	JOB: 6XXX
SCALE: ¼"=1'-0"	DRWN: BD	CHKD: TFS	QTY: 1
40'x60'x9' INSULATED PRECAST CONCRETE BUILDING			
PRECAST BUILDING			