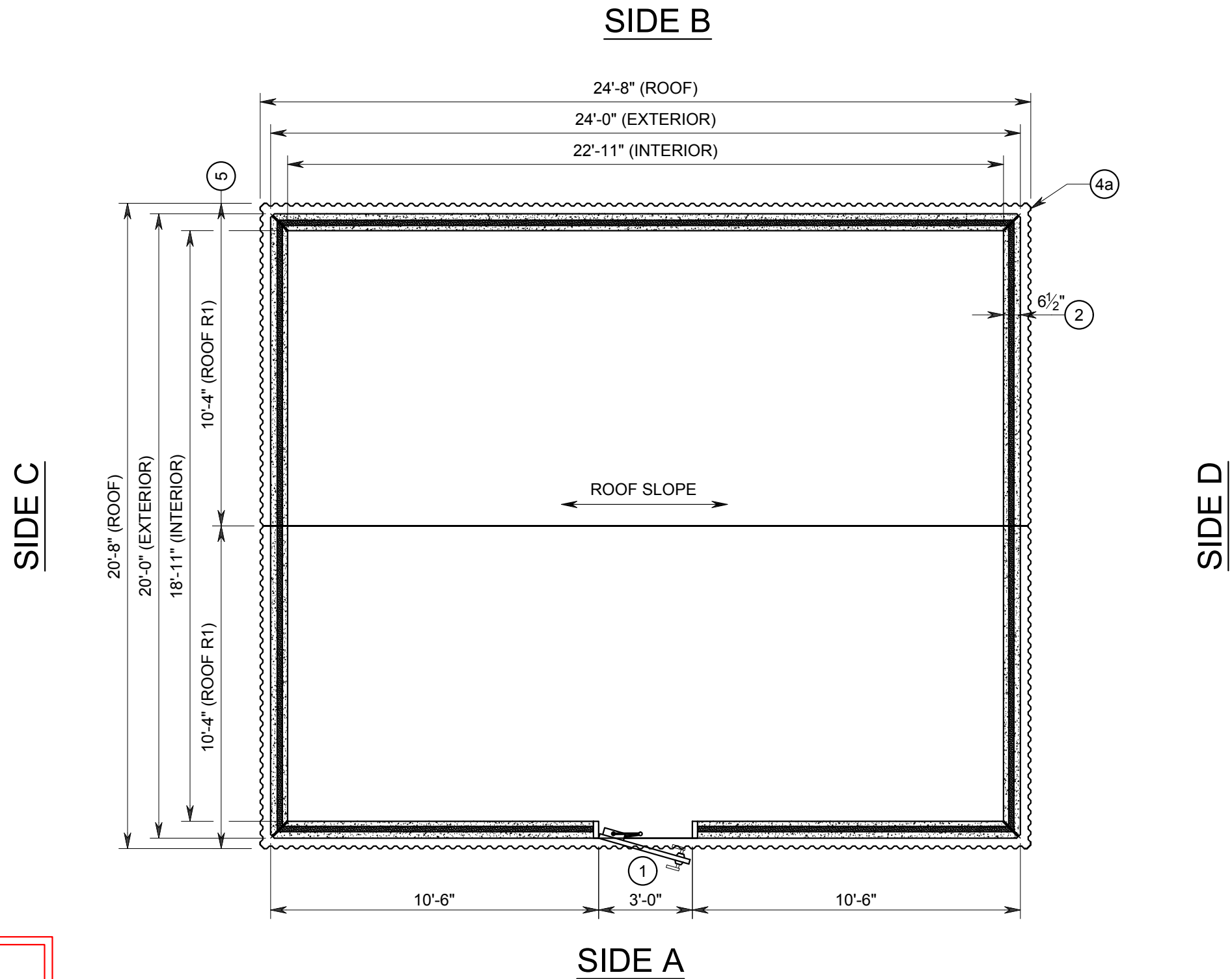


- KEYED NOTES:**
- ① 3'-0"x7'-0" INSULATED & GALVANIZED SINGLE STEEL DOOR
  - ② 6½" THICK WALLS (TYP.)
  - ④a RIBBED ROOF EDGE ON ALL SIDES
  - ⑤ ROOF PANEL JOINT



**PRELIMINARY  
NOT FOR CONSTRUCTION**

SOME DIMENSIONS MAY CHANGE UPON FINAL REVIEW OF DESIGN.

**#6XXX  
24'x20'x9'SP**  
EXTERIOR FINISH  
(T.B.D.)

NO.	DATE	REVISION	APP.

DRAWING IS NOT TO SCALE IF BAR DOES NOT MEASURE 1"

**ROOF & FLOOR PLAN  
(FLOOR SLAB BY OTHERS)**

PROPRIETARY AND CONFIDENTIAL RIGHTS ARE INCLUDED IN THE INFORMATION DISCLOSED HEREIN. NEITHER THIS DOCUMENT NOR THE INFORMATION DISCLOSED HEREIN SHALL BE REPRODUCED OR TRANSFERRED TO OTHER DOCUMENTS OR BE USED OR DISCLOSED TO OTHERS FOR MANUFACTURING OR FOR ANY PURPOSE EXCEPT AS SPECIFICALLY AUTHORIZED IN WRITING BY LONESTAR PRESTRESS MFG., INC. TEXAS PROFESSIONAL ENGINEERS REG. NO. F-9055.

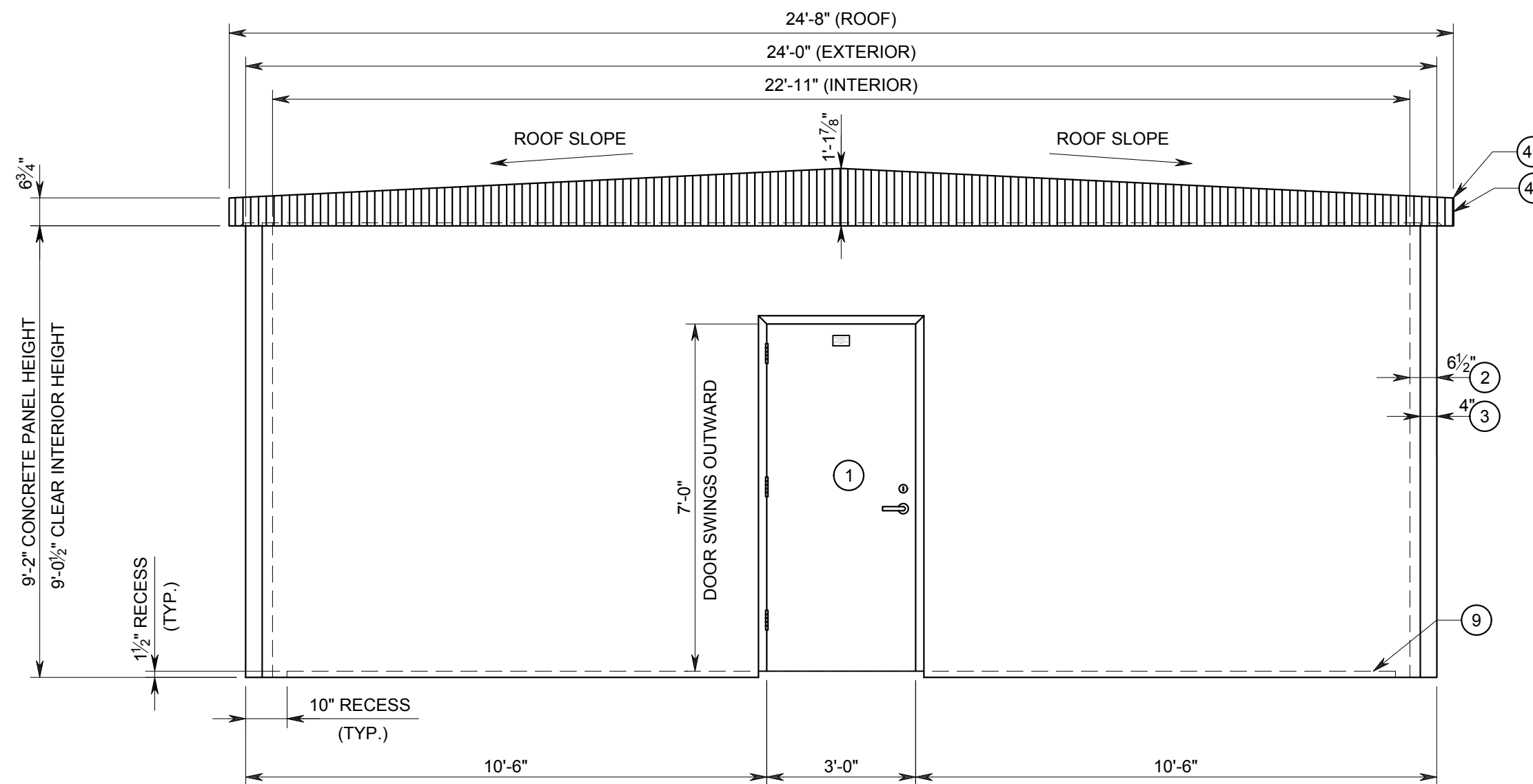


8892 Highway 159 East  
Bellville, TX 77418  
www.lonestarprestress.com  
Tel: (713) 896-0994  
Fax: (713) 896-0762

LONESTAR PRESTRESS MFG., INC.			
SHEET: 1	FILE: 6XXX 24x20x9SP.DWG	DATE: 10/26/18	JOB: 6XXX
SCALE: ¼"=1'-0"	DRWN: BD	CHKD: TFS	QTY: 1
24'x20'x9' INSULATED PRECAST CONCRETE BUILDING			
PRECAST BUILDING			

KEYED NOTES:

- ① 3'-0"x7'-0" INSULATED & GALVANIZED SINGLE STEEL DOOR
- ② 6½" THICK WALLS (TYP.)
- ③ 4" SMOOTH (TYP.)
- ④a RIBBED ROOF EDGE ON ALL SIDES
- ④b R-19 SUPERTHERM ROOF COATING
- ⑨ FINISHED FLOOR



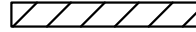
**SIDE A**

**#6XXX**  
**24'x20'x9'SP**  
 EXTERIOR FINISH  
 (T.B.D.)

**PRELIMINARY  
 NOT FOR CONSTRUCTION**

SOME DIMENSIONS MAY CHANGE UPON  
 FINAL REVIEW OF DESIGN.

NO.	DATE	REVISION	APP.

  
 DRAWING IS NOT TO  
 SCALE IF BAR DOES  
 NOT MEASURE 1"

**ELEVATION**

PROPRIETARY AND CONFIDENTIAL RIGHTS ARE INCLUDED IN THE INFORMATION DISCLOSED HEREIN. NEITHER THIS DOCUMENT NOR THE INFORMATION DISCLOSED HEREIN SHALL BE REPRODUCED OR TRANSFERRED TO OTHER DOCUMENTS OR BE USED OR DISCLOSED TO OTHERS FOR MANUFACTURING OR FOR ANY PURPOSE EXCEPT AS SPECIFICALLY AUTHORIZED IN WRITING BY LONESTAR PRESTRESS MFG., INC. LOUISIANA ENGINEERING FIRM REGISTRATION NO. EF. 0002850

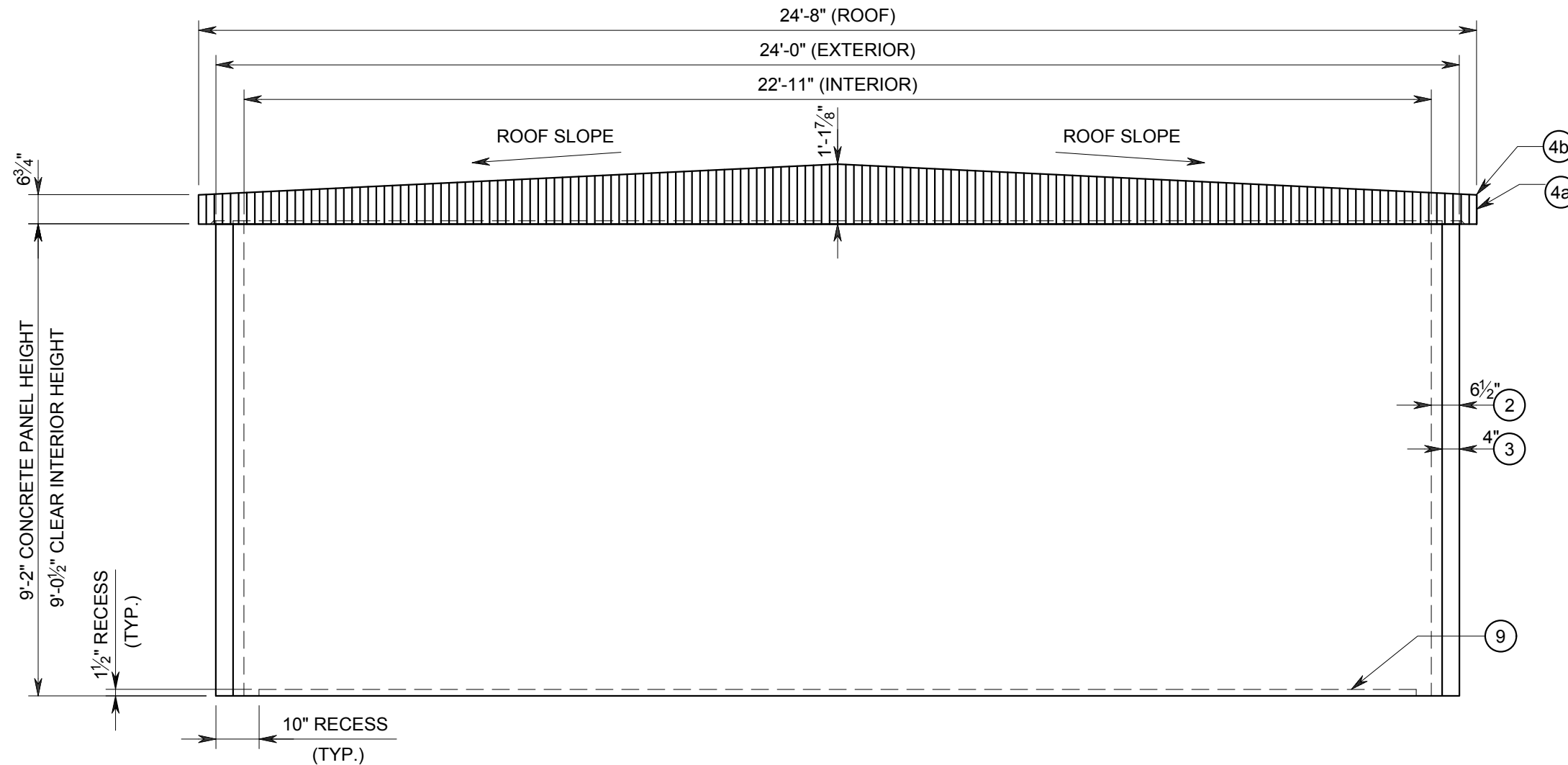


8892 Highway 159 East  
 Bellville, TX 77418  
 www.lonestarprestress.com  
 Tel: (713) 896-0994  
 Fax: (713) 896-0762

LONESTAR PRESTRESS MFG., INC.			
SHEET: 2	FILE: 6XXX 24x20x9SP.DWG	DATE: 10/26/18	JOB: 6XXX
SCALE: 3/8"=1'-0"	DRWN: BD	CHKD: TFS	QTY: 1
24'x20'x9' INSULATED PRECAST CONCRETE BUILDING			
PRECAST BUILDING			

**KEYED NOTES:**

- ② 6½" THICK WALLS (TYP.)
- ③ 4" SMOOTH (TYP.)
- ④a RIBBED ROOF EDGE ON ALL SIDES
- ④b R-19 SUPERTHERM ROOF COATING
- ⑨ FINISHED FLOOR




**SIDE B**

**#6XXX**  
**24'x20'x9'SP**  
 EXTERIOR FINISH  
 (T.B.D.)

**PRELIMINARY  
 NOT FOR CONSTRUCTION**

SOME DIMENSIONS MAY CHANGE UPON  
 FINAL REVIEW OF DESIGN.

NO.	DATE	REVISION	APP.

  
 DRAWING IS NOT TO  
 SCALE IF BAR DOES  
 NOT MEASURE 1"

**ELEVATION**

PROPRIETARY AND CONFIDENTIAL RIGHTS ARE INCLUDED IN THE INFORMATION DISCLOSED HEREIN. NEITHER THIS DOCUMENT NOR THE INFORMATION DISCLOSED HEREIN SHALL BE REPRODUCED OR TRANSFERRED TO OTHER DOCUMENTS OR BE USED OR DISCLOSED TO OTHERS FOR MANUFACTURING OR FOR ANY PURPOSE EXCEPT AS SPECIFICALLY AUTHORIZED IN WRITING BY LONESTAR PRESTRESS MFG., INC. LOUISIANA ENGINEERING FIRM REGISTRATION NO. EF. 0002850

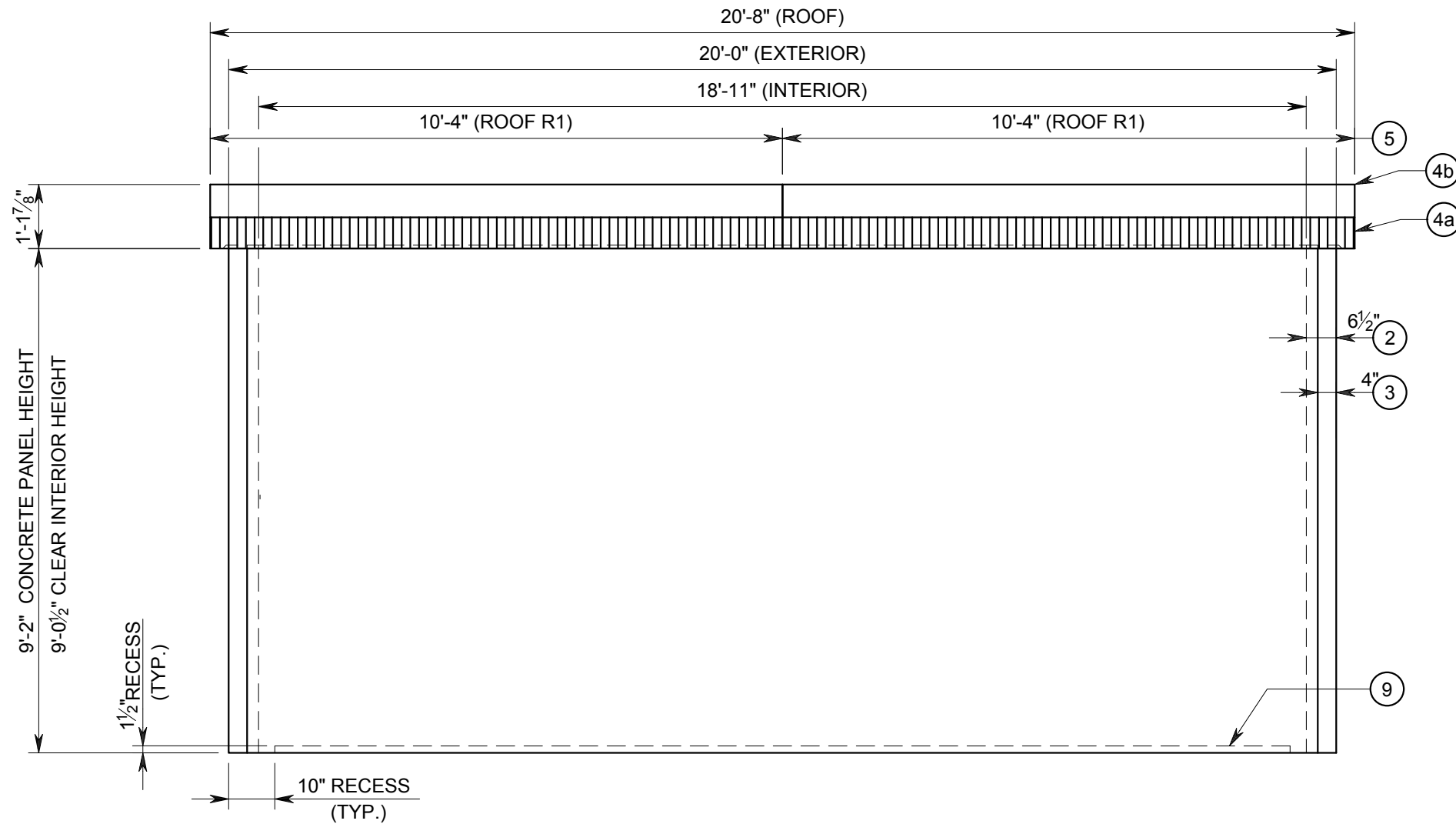


8892 Highway 159 East  
 Bellville, TX 77418  
 www.lonestarprestress.com  
 Tel: (713) 896-0994  
 Fax: (713) 896-0762

LONESTAR PRESTRESS MFG., INC.			
SHEET: 3	FILE: 6XXX 24x20x9SP.DWG		
SCALE: 3/8"=1'-0"	DATE: 10/26/18	JOB: 6XXX	
DSN: TFS	DRWN: BD	CHKD: TFS	QTY: 1
24'x20'x9' INSULATED PRECAST CONCRETE BUILDING			
PRECAST BUILDING			

KEYED NOTES:

- ② 6½" THICK WALLS (TYP.)
- ③ 4" SMOOTH (TYP.)
- ④a RIBBED ROOF EDGE ON ALL SIDES
- ④b R-19 SUPERTHERM ROOF COATING
- ⑤ ROOF PANEL JOINT
- ⑨ FINISHED FLOOR




SIDE C

#6XXX  
 24'x20'x9'SP  
 EXTERIOR FINISH  
 (T.B.D.)

**PRELIMINARY  
 NOT FOR CONSTRUCTION**

SOME DIMENSIONS MAY CHANGE UPON  
 FINAL REVIEW OF DESIGN.

NO.	DATE	REVISION	APP.

  
 DRAWING IS NOT TO  
 SCALE IF BAR DOES  
 NOT MEASURE 1"

ELEVATION

PROPRIETARY AND CONFIDENTIAL RIGHTS ARE INCLUDED IN THE INFORMATION DISCLOSED HEREIN. NEITHER THIS DOCUMENT NOR THE INFORMATION DISCLOSED HEREIN SHALL BE REPRODUCED OR TRANSFERRED TO OTHER DOCUMENTS OR BE USED OR DISCLOSED TO OTHERS FOR MANUFACTURING OR FOR ANY PURPOSE EXCEPT AS SPECIFICALLY AUTHORIZED IN WRITING BY LONESTAR PRESTRESS MFG., INC. LOUISIANA ENGINEERING FIRM REGISTRATION NO. EF. 0002850

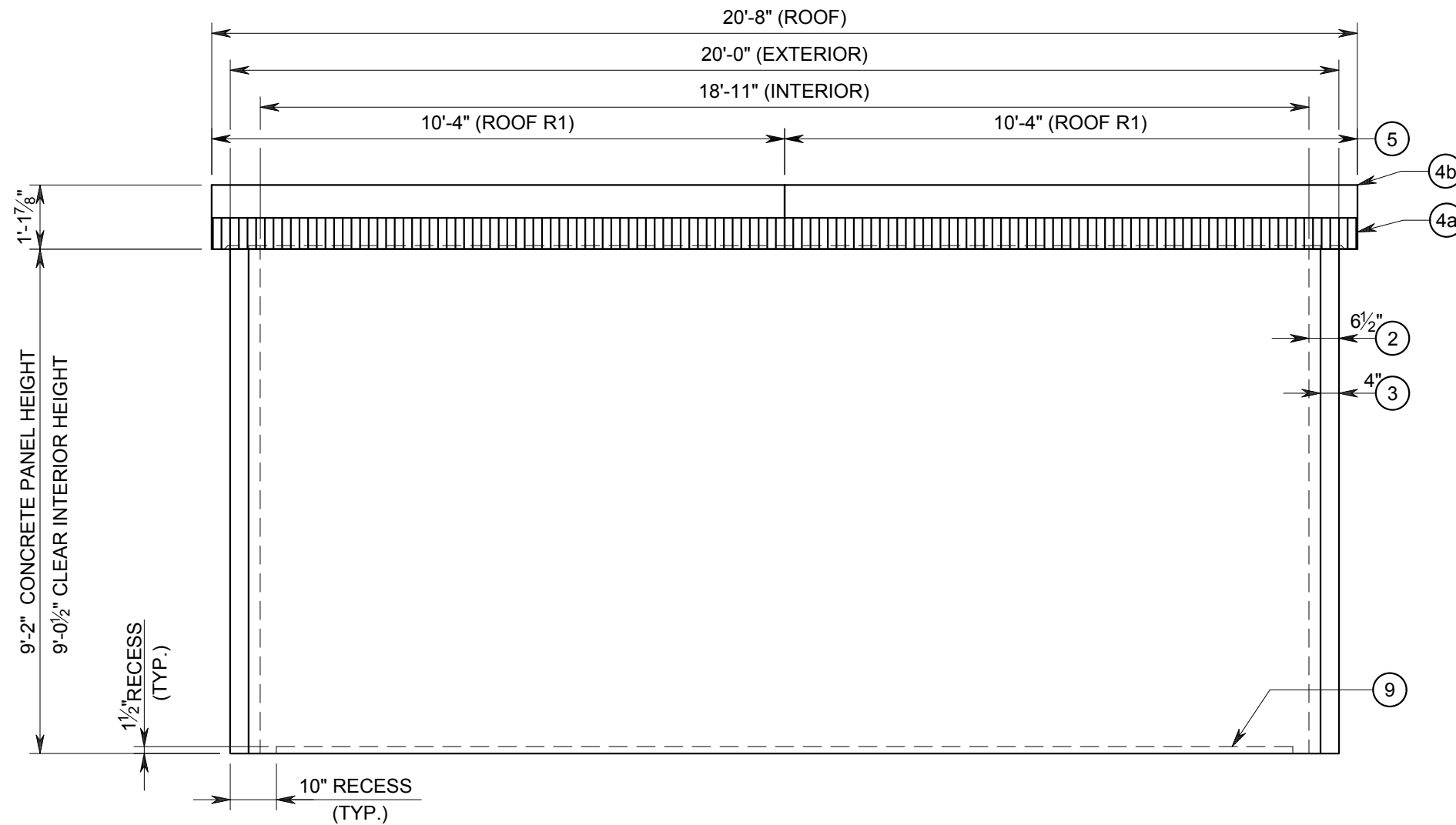


8892 Highway 159 East  
 Bellville, TX 77418  
 www.lonestarprestress.com  
 Tel: (713) 896-0994  
 Fax: (713) 896-0762

LONESTAR PRESTRESS MFG., INC.			
SHEET: 4	FILE: 6XXX 24x20x9SP.DWG	DATE: 10/26/18	JOB: 6XXX
SCALE: 3/8"=1'-0"	DRWN: BD	CHKD: TFS	QTY: 1
24'x20'x9' INSULATED PRECAST CONCRETE BUILDING			
PRECAST BUILDING			

**KEYED NOTES:**

- ② 6½" THICK WALLS (TYP.)
- ③ 4" SMOOTH (TYP.)
- ④a RIBBED ROOF EDGE ON ALL SIDES
- ④b R-19 SUPERTHERM ROOF COATING
- ⑤ ROOF PANEL JOINT
- ⑨ FINISHED FLOOR



**SIDE D**

**PRELIMINARY  
NOT FOR CONSTRUCTION**

SOME DIMENSIONS MAY CHANGE UPON  
FINAL REVIEW OF DESIGN.

**#6XXX  
24'x20'x9'SP**  
EXTERIOR FINISH  
(T.B.D.)

NO.	DATE	REVISION	APP.

DRAWING IS NOT TO  
SCALE IF BAR DOES  
NOT MEASURE 1"

ELEVATION

PROPRIETARY AND CONFIDENTIAL RIGHTS ARE INCLUDED IN THE INFORMATION DISCLOSED HEREIN. NEITHER THIS DOCUMENT NOR THE INFORMATION DISCLOSED HEREIN SHALL BE REPRODUCED OR TRANSFERRED TO OTHER DOCUMENTS OR BE USED OR DISCLOSED TO OTHERS FOR MANUFACTURING OR FOR ANY PURPOSE EXCEPT AS SPECIFICALLY AUTHORIZED IN WRITING BY LONESTAR PRESTRESS MFG., INC. LOUISIANA ENGINEERING FIRM REGISTRATION NO. EF. 0002850



8892 Highway 159 East  
Bellville, TX 77418  
www.lonestarprestress.com  
Tel: (713) 896-0994  
Fax: (713) 896-0762

LONESTAR PRESTRESS MFG., INC.			
SHEET: 5	FILE: 6XXX 24x20x9SP.DWG	DATE: 10/26/18	JOB: 6XXX
SCALE: 3⁄8"=1'-0"	DRWN: BD	CHKD: TFS	QTY: 1
24'x20'x9' INSULATED PRECAST CONCRETE BUILDING			
PRECAST BUILDING			