

STOCK CODE:
CUSTOMER:

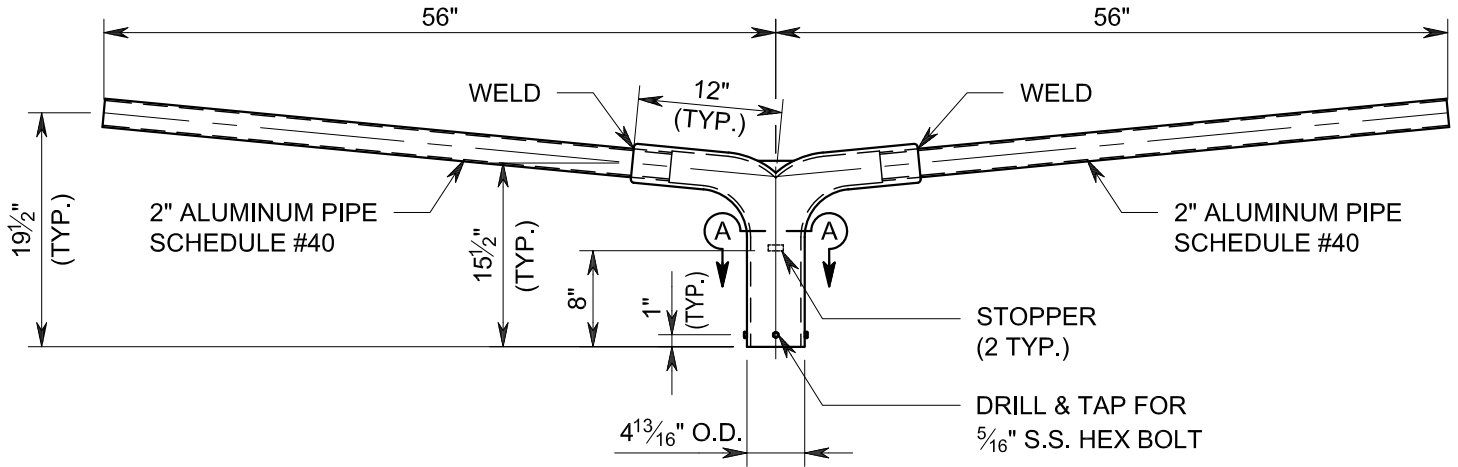


8892 Highway 159 East
Bellville, TX 77418
www.lonestarprestress.com
Tel: (713) 896-0994
Fax: (713) 896-0762

DWG. NO:	CATALOG	REV.
CAT. NO:	967905	DATE: 2/18/20
PROJECT:		

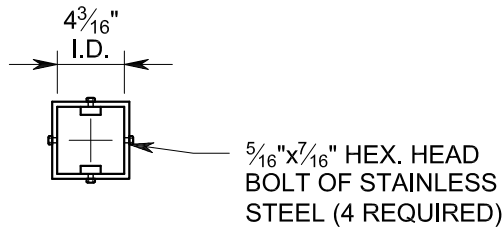
TEXAS PROFESSIONAL ENGINEERS REG. NO. F-9055.
APPROVED BY: _____ DATE: _____

DAB-5 BRACKET ARM



STREET LIGHT BRACKET DETAIL

SCALE: 3/4" = 1'-0"



SECTION A-A

SCALE: 1"=1'-0"

BRACKET NOTES:

1. COMPLETE ASSEMBLY - THE BRACKET SHALL BE OF A LENGTH TO MOUNT TO A LUMINAIRE APPROXIMATELY FIVE FEET FROM CENTER OF POLE AS PER DRAWING.
2. POLE TOP FITTING - THE POLE TOP FITTING SHALL BE CAST ALUMINUM. THE CASTING AND PARTS SHALL BE AS PER DRAWING. CASTING SHALL BE ALUMINUM ALLOY #356-T6 OR TENZOLOY.
3. SUPPORTS - THE LUMINAIRE SUPPORTS SHALL BE MADE OF TWO INCH IPS ALUMINUM PIPE. ASA SCHEDULE 40.

DESCRIPTION: 5' ALUMINUM DOUBLE ARM BRACKET		
TRUCK LOAD QTY:	DRWN: BD	CHKD:
WEIGHT: 25 LBS.	QTY:	
FINISH: ALUMINUM		

STOCK CODE:
CUSTOMER:

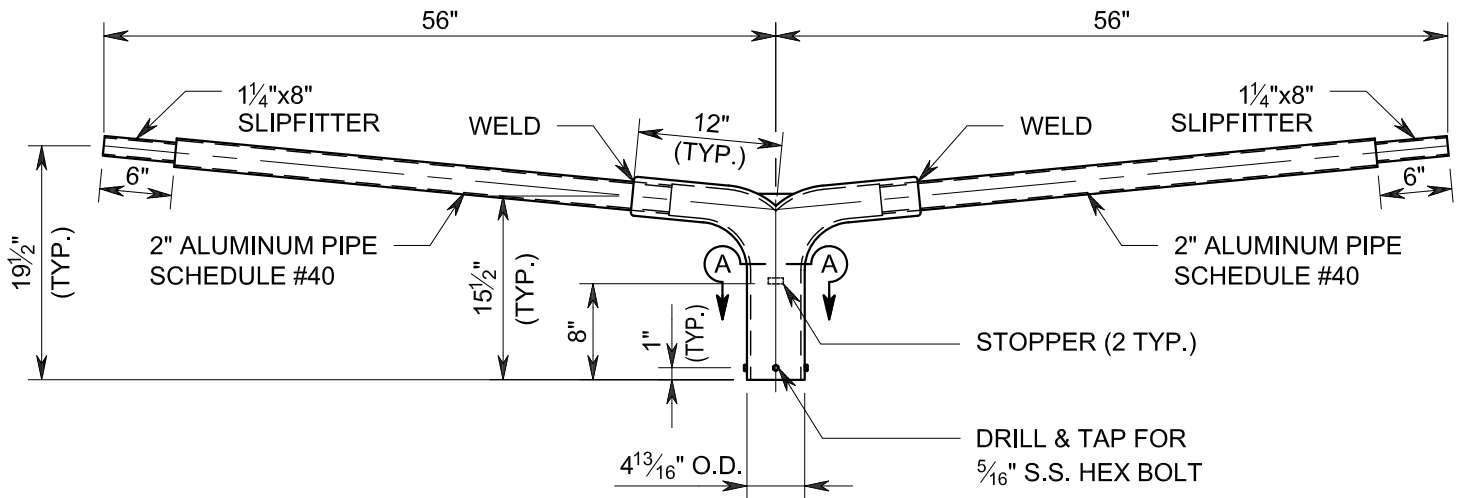


8892 Highway 159 East
Bellville, TX 77418
www.lonestarprestress.com
Tel: (713) 896-0994
Fax: (713) 896-0762

DWG. NO:	CATALOG	REV.
CAT. NO:	967905-SF	DATE: 2/18/20
PROJECT:		

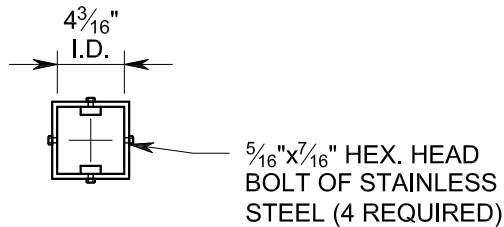
TEXAS PROFESSIONAL ENGINEERS REG. NO. F-9055.	
APPROVED BY:	DATE:

DAB-5 BRACKET ARM



STREET LIGHT BRACKET DETAIL

SCALE: 3/4" = 1'-0"



SECTION A-A

SCALE: 1"=1'-0"

BRACKET NOTES:

1. COMPLETE ASSEMBLY - THE BRACKET SHALL BE OF A LENGTH TO MOUNT TO A LUMINAIRE APPROXIMATELY FIVE FEET FROM CENTER OF POLE AS PER DRAWING.
2. POLE TOP FITTING - THE POLE TOP FITTING SHALL BE CAST ALUMINUM. THE CASTING AND PARTS SHALL BE AS PER DRAWING. CASTING SHALL BE ALUMINUM ALLOY #356-T6 OR TENZOLOY.
3. SUPPORTS - THE LUMINAIRE SUPPORTS SHALL BE MADE OF TWO INCH IPS ALUMINUM PIPE. ASA SCHEDULE 40 AND 1 - 1/4" IPS x 4" SLIPFITTER.

DESCRIPTION:
**5' ALUMINUM DBL ARM BRKT
w/ 6"x1 1/4" I.D. SLIPFITTER**

TRUCK LOAD QTY:	DRWN: BD	CHKD:
WEIGHT: 25 LBS.	QTY:	
FINISH: ALUMINUM		