

Sports Lighting Technical Chart

CATALOG NUMBER SMOOTH GRAY	MOUNT- ING HEIGHT (Ft.)	POLE WEIGHT (Lbs.)	OVERALL LENGTH (Ft.)	POLE SIZE (In.)		EPA AT POLE TIP (Sq. Ft.)					ULTIMATE GROUNDLINE MOMENT (Ft. Lbs.)
				TIP	BUTT	90	110	130	140	160	
						MPH	MPH	MPH	MPH	MPH	
453502-8	37	4,4574	45	6.00	13.31	134	84	55	45	31	106,100
454502-8	37	6,116	45	7.62	14.94	184	116	77	64	44	143,300
503502-8	42	5,538	50	6.00	14.13	132	82	53	43	28	124,000
504502-8	42	7,318	50	7.62	15.75	178	111	73	60	40	164,700
553502-8	46	6,618	55	6.00	14.94	130	80	51	41	26	139,200
554502-8	46	8,648	55	7.62	16.56	173	107	69	56	37	182,100
603502-8	51	7,820	60	6.00	15.75	129	78	49	39	24	159,400
604502-8	51	10,116	60	7.62	17.38	166	101	64	51	32	202,100
653502-8	55	9,151	65	6.00	16.56	129	77	47	37	22	176,900
703502-8	60	10,617	70	6.00	17.38	126	74	44	34	19	197,500

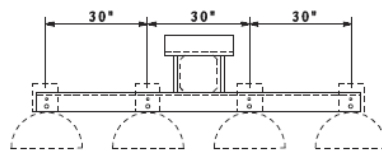
Notes:

1. EPAs shown do not include cross arm. Please refer to the Cross Arm Bracket Technical Chart for cross arm EPA.
2. Above values are based on an assumed minimum embedment of 10% of the length plus 3 feet.

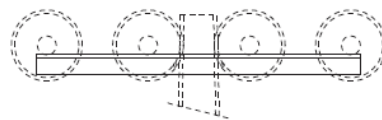
Cross Arm Bracket Technical Chart

CATALOG NUMBER	TYPE	ASSEMBLY WEIGHT (Lbs.)	ANGLE EPA (Sq. Ft.)	MAXIMUM INDIVIDUAL FIXTURE SIZE	
				EPA (Sq. Ft.)	WEIGHT (Lbs.)
962839	2 LIGHT	35	1.5	3.5	75
963859	3 LIGHT	66	2.8	3.5	75
964889	4 LIGHT	78	4.0	3.5	75
9658109	5 LIGHT	155	7.5	3.5	75
9668139	6 LIGHT	175	9.3	3.5	75

Angles and bolts for cross arms to be hot dipped galvanized unless otherwise specified by customer.

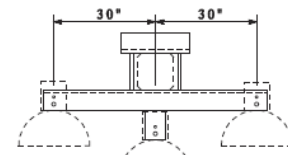


PLAN

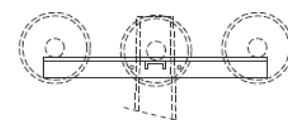


ELEVATION

TYPICAL LAYOUT FOR EVEN NUMBER OF FIXTURES. FIXTURE ARRANGEMENT TYPICAL FOR ONE OR BOTH SIDES OF POLE.

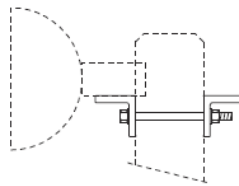


PLAN

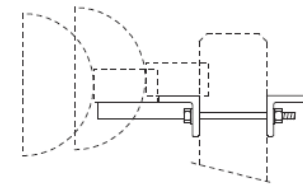


ELEVATION

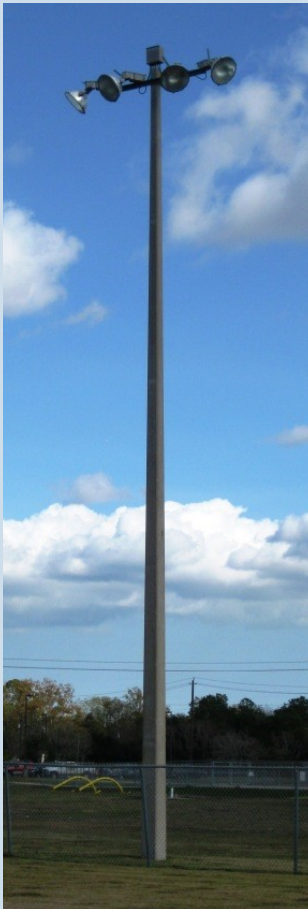
TYPICAL LAYOUT FOR ODD NUMBER OF FIXTURES. FIXTURE ARRANGEMENT TYPICAL FOR ONE OR BOTH SIDES OF POLE.



SIDE VIEW



SIDE VIEW



Sports Lighting Pole

POLE	TIP	BUTT
45 FT.	6"	13.31"x13.31"
45 FT.	7.6"	14.94"x14.94"
50 FT.	6"	14.13"x14.13"
50 FT.	7.6"	15.75"x15.75"
55 FT.	6"	14.94"x14.94"
55 FT.	7.6"	16.56"x16.56"
60 FT.	6"	15.75"x15.75"
60 FT.	7.6"	17.38"x17.38"
65 FT.	6"	16.56"x16.56"
70 FT.	6"	17.38"x17.38"

Sports Lighting Typical Details

- WE ARE NOT RESTRICTED TO THESE STANDARD DETAILS AND WELCOME ANY SPECIAL DESIGNS. YOU MAY USE THE STANDARD DRAWING TO MARK UP AND SEND TO YOUR SALES REPRESENTATIVE OR SEND DIRECTLY TO US.

- CABLE ENTRANCE AVAILABLE WITH CONDUIT COUPLINGS.

