

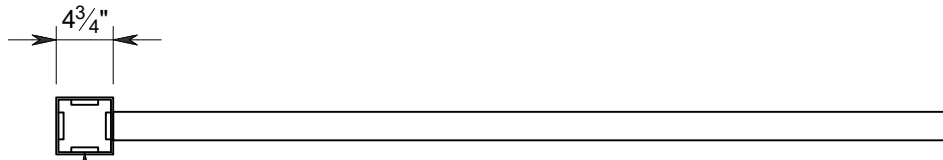
STOCK CODE:  
CUSTOMER:



8892 Highway 159 East  
Bellville, TX 77418  
www.lonestarprestress.com  
Tel: (713) 896-0994  
Fax: (713) 896-0762

DWG. NO:	CATALOG	REV.
CAT. NO:	966869	DATE:
PROJECT:		10/28/21

TEXAS PROFESSIONAL ENGINEERS REG. NO. F-9055.	
APPROVED BY:	DATE:

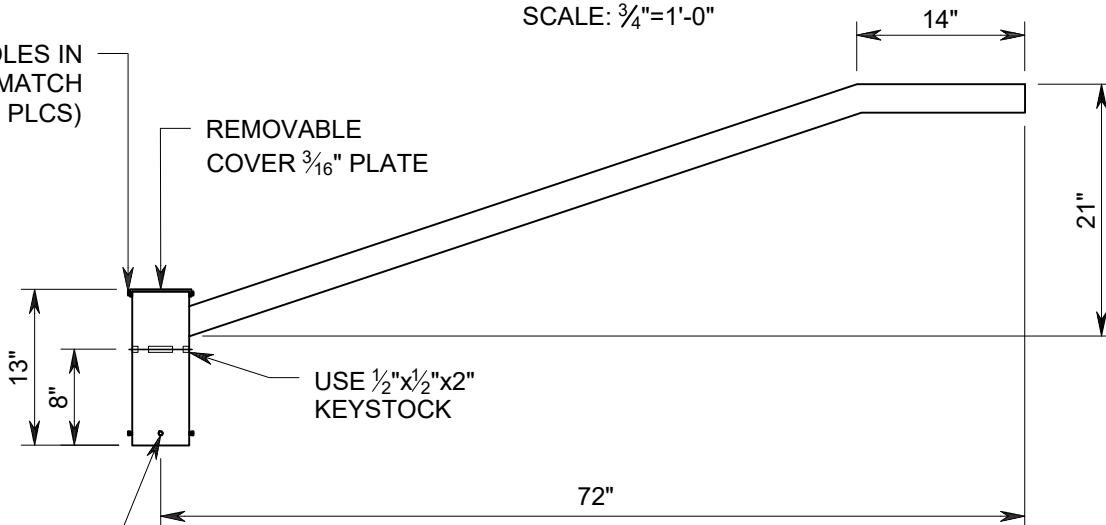


KEYWAY STOPS TO BE WELDED ON TOP SIDE ONLY. BOTTOM SIDE MUST BE SMOOTH SO CAP WILL SIT LEVEL ON POLE.

### TOP VIEW

SCALE: 3/4"=1'-0"

DRILL 5/16" HOLES IN COVER TO MATCH (TYP. 2 PLCS)



REMOVABLE COVER 3/16" PLATE

USE 1/2"x1/2"x2" KEYSTOCK

DRILL & TAP FOR 5/16" S.S. SET SCREWS (TYP. 4 PLCS)

### SIDE VIEW

SCALE: 3/4"=1'-0"

#### NOTES:

1. ALL PARTS TO BE STEEL.
2. ALL TOLERANCES SHALL BE 1/16".
3. MATERIAL TO BE 3/16" STEEL UNLESS OTHERWISE NOTED.
4. INSTALL 1/4"x20"x1/4" S.S. BOLTS IN COVER
5. STEEL BRACKET TO BE GALVANIZED AFTER FABRICATION.

DESCRIPTION:  
**TYPE I STEEL SINGLE ARM BRACKET**

TRUCK LOAD QTY:	DRWN: KC	CHKD:
WEIGHT:	QTY:	
FINISH: GALVANIZED STEEL		