

COMMUNITY KILN
AT BRICK STACK ARTS CENTER

A PROGRAM OF **S M C**

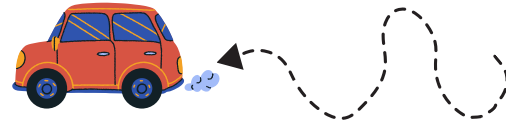


COMMUNITY KILN
AT BRICK STACK ARTS CENTER

A PROGRAM OF **S M C**

THE ALL INCLUSIVE GUIDE TO

COMMUNITY KILN



Parking

We are located at 46 Park St. Framingham, MA. Once you enter the parking lot, turn left at the bottom of the driveway and left again at the dumpsters. You will see large lettering on the building that says “Pearl St. Cupboard” and occasionally a bus that says “Pop Up Pantry.” Our door is to the left of these landmarks. You may park anywhere in the lot to access our door, parking is always free.

Purchasing Clay and Tools

Your class tuition prices include class time, any open studios, glazes, equipment use, firing and one free bag of clay. Any additional bags of clay will be written down by your instructor and charged at the end of the semester. Your 2nd and 3rd bag of clay are \$28 and your 4th bag of clay is \$40. Limit of 4 bags per semester. Recycled Clay is also available for purchase at a discounted price.

Clay can be purchased from your teacher during class time



Limit 4 bags per semester



Clay charges will be made at the end of the semester

Students are not permitted to bring any clays from outside of Community Kiln. We do NOT fire outside clay. Pottery tools and merchandise are available for sale in the office.

Welcome to Community Kiln!



We are a nonprofit ceramics studio in Framingham, MA. As a part of Southern Middlesex Opportunity Council (SMOC), it is our mission to make clay accessible to ALL. Community Kiln, our ceramics program, is dedicated to educating and inspiring a community of artists in MetroWest. Here, students of all ages, abilities, and backgrounds can come together to experience, learn about, and celebrate ceramic arts.

Follow Us

Follow us on Instagram and Facebook and tag us in your work

@community_kiln

Rejected?

Was your item rejected? *Don't take it personally!*

Rejected glaze items will be on a cart by the wheels with a tag inside on why it was rejected. Resolve this issue and put it back into the kiln room to have it fired.

Pieces of greenware with significant cracks will be rejected. Check the reject shelf in the greenware drying area to see if your piece wasn't fired. If you would still like your piece fired with the crack, simply move it back to a different drying rack and away from the reject space.

Kiln Schedule

All kilns are fired based on a couple variables. When these are met, Community Kiln will run a batch of items through a bisque or glaze kiln.

Monday-

White Glaze Kiln

Bisque Kiln



Wednesday-

Speckled/Brown Glaze Kiln

Bisque Kiln



Friday-

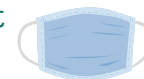
White Glaze Kiln

Bisque Kiln

Cleaning Up

Cleaning after every class is absolutely essential. You must clean up your workspace, tools and any equipment used. This is a shared space and other members rely on you keeping your spaces clean. Sponges are available to wipe tools and equipment down. We also have mops for the floor and large spills. Occasionally we will have a studio cleaning day where we tackle larger cleaning projects together.

Clay dust can be harmful to your lungs! Masks are not required, but advised.



Scrape off large pieces of clay on wedging tables and ware boards. Wash anything else with leftover clay with water and a sponge.



Place clay scraps in their proper reclaim buckets, breaking larger pieces before they are put in buckets.

There are mops, sponges and buckets available for students to use for large spills and cleaning.

Use plenty of water to clean up; do not sweep—doing so will raise dust that can remain airborne for days.

Due to the amount of water used in the studio, floors may be slippery; do not run—always walk carefully, especially around the sink



Please be aware of the location of all exits, fire extinguisher, first aid kit and eyewash station.



Work that's ready to be bisqued

Community Kiln has two bisque kilns that fire to Cone 05. Depending on how much greenware we receive, these kilns can be ran 3 times a week. A typical bisque cycle takes about 24 hours to complete and cool down enough to be unloaded.

- Work that is ready to be bisqued can be put on any of the labeled shelves outside of the kiln room marked "greenware"
- It takes 2-3 weeks for pieces to come out of the bisque kiln. Works must be completely bone dry. This excludes very large or thick pieces, which may take longer to run through the kiln.
- We ask that you do not place greenware inside of the kiln room. This space is reserved for STAFF organization.
- If you can not find your piece on the greenware shelves where you left it, don't worry! Pieces are constantly being moved around depending on levels of dryness.
- After being bisque fired, works will be stamped with the date they were unloaded and placed on the bisqueware shelves. Wares are sorted by object type. Remember to look under or inside or other pieces as wares shift.
- Community Kiln does not hold bisqueware older than three months. Check the "last chance" or "reject" shelf if you are missing a piece.

Work that's ready to be glazed

When a work is ready to be glaze fired, there are a couple things to check before putting it on the proper shelf!

- Make sure the glaze is wiped from the bottom and 1/4 inch up the piece
- Fill out a glaze tag indicating what glazes you used. These are located by the glazes or in the kiln room.
- Check for pin holes or flaking, this can mean your glaze is too thick!

Place your piece on the proper shelf in the kiln room AND sort your items by height. If you would like something fired at a different temperature, indicate this on your tag. Short items are placed on the lowest shelves, with the tallest items on the top shelves. Remember to push back your work to accommodate for everyone's pieces and place your glaze tag in or around your piece! Items will be ready in 2-3 weeks and placed on the baker's carts by the wheels (excluding large or flat pieces).

Kiln 1 fires speckled and brown clay at a cooler temperature- Cone 5/6

Kiln 2 fires white clay at a hotter temperature- Cone 6/7

Commercial Glazes

Community Kiln is pleased to offer a selection of commercial glazes that are permitted to be in our kilns. All rules and regulations must be followed or your pieces will remain unfired.

follow me for the approved glaze list!



Open Studio

Open Studios are included in your tuition price. You may attend any open studios you would like, no reservations needed.

Note: the front door will remain locked on weekends, so please ring the intercom for entrance.

Monday- 1:30-4:30PM

Tuesday- NO Open Studios

Wednesday- 2-5PM

Thursday- 1-4PM

Friday- 12:30-3:30PM

Saturday- 10-4PM

Sunday- 10-4PM

When can I come in?



Come in during any of the above hours provided there are no cancellations for weather, holidays or other closures.

Where can I work?



These are dedicated times for you! Check for wheel or table reservations for private lessons, some equipment may be off limits during their reserved times.

Do I need to sign in?

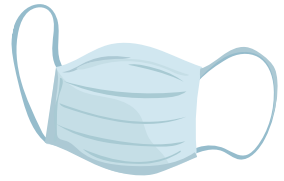


Nope! Show up any time that works for you.

I need some help...

There is additional signage in the studio for more guidance. Still confused? Ask a teacher or another student!

Mask Policy



We aim to make our studio accessible to ALL! We require masks on Tuesday and Thursday and some workshops to ensure the safety of everyone in our community.

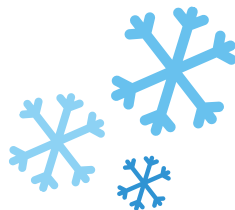
Please always check in with your instructor about their mask policies and be kind to those around you! Extra masks are always available in the studio for personal use.

Weather Closings



Community Kiln will follow the cancellations of the Framingham Public School System. If a class is canceled, students will receive an email from staff regarding the cancellation at least an hour before their class is set to start. If we feel as though it is unsafe to travel, you will receive email notification.

Whenever possible, classes will be rescheduled at the end of the semester.



Teachers

Meghan Albee, Sculptural Handbuilding

Zen Crosby, Youth Classes

Howard Gerstein, Wheelthrowing

Martha Gold, Wheelthrowing

Cheska Komissar, Wheelthrowing

David LaPierre, Wheelthrowing

Michelle Lougee, Handbuilding

Amy Snyder, Handbuilding

Zachary Stuart, Youth Classes



Thanks

Thank you so much for your interest in Community Kiln. Your support keeps our studio running! Donations to Community Kiln can be made on our website www.brickstack.org

For additional questions, comments or concerns refer to our contact information below.

Contact Us

Community Kiln
communitykiln@smoc.org
508-309-4604

Natalie Dahl, Program Manager
ndahl@smoc.org

Meghan Albee, Studio Assistant

