



Community Kiln



What's New

BY NATALIE DAHL

February has been a great month here at the studio! We have our 10 week long classes in full swing with new and old students producing gorgeous work. February also means a quick Winter break in the middle of the semester to host exciting workshops like Two-time wheelthrowing with David LaPierre and Lovebirds with Zen Crosby. We also have registration for Spring 2025 classes approaching on Saturday, February 22nd at 9AM; You won't want to miss that! Be sure to tune into our Instagram and Facebook @communitykiln to view upcoming events for February, March and beyond.

Inside:

- Alternative Firing pg. 2
- Firing a Kiln pg. 2
- Upcoming Events pg. 4
- Amazing Glazes pg. 4
- Shrink Rulers pg. 5
- Staying Updated pg. 5
- Check out these Opportunities! pg. 6-14

Alternative Firing

WHAT'S A RAKU?

Firing your pieces in an electric kiln is the way that we finish things here at Community Kiln, but did you know that there are many other ways to apply and fire glaze? When items are placed in an electric kiln, the glaze firing is oxygen neutral- meaning that the amount of oxygen entering and exiting the kiln is the same. Two alternative ways of firing ceramics is to create a reduction or an oxidation setting. A reduction kiln means that the amount of oxygen will either be reduced so there is more carbon present in the firing environment, and an oxidation does the inverse of providing more oxygen inside of the kiln.

Raku firing is an ancient Japanese technique of firing ceramics where pottery, at its hottest temperature, is removed and submerged in a reduction chamber. This carbon rich environment allows the smoke to be absorbed and reflected in the finish of the pottery causing scarring textures and beautiful iridescent spots.



Firing a Kiln

HOW WE DO THINGS



I have finished my piece and put it in the back room, now what happens? To fire a kiln, there are some criteria to meet, sometimes delaying how fast your work is processed. For bisque kilns, we are looking for enough bone dry work, work that has no water remaining inside of the clay. When you place your pieces on the back shelves to dry, we monitor them and move them accordingly to ensure they enter the kilns at the right time.

Glaze kilns are loaded to ensure proper air flow is achieved in the firing environment. For this to happen, we need a reasonable number of pieces to accumulate before loading. Wares that are flat or tall take up more space in firings and therefore will take longer to receive back. Please leave at least two weeks of waiting time to receive bisqueware and glazeware.

Remember to check the "rejected" shelves for both greenware and bisqueware that has been glazed; Things happen when you put them on the shelves to dry! In order to bring these details to your awareness and give you the chance to correct anything before it's fired, we add questionable pieces to the "reject" shelves. Correct the error and put it back on the proper shelf to be fired.



Upcoming Events



Spring Registration

Saturday, February 22nd, 9AM

Interested in pottery classes?

Register for a Spring 2025 session at Community Kiln. Typical classes are \$505 and include 25lbs of clay, 10 weeks of instruction and access to all open studios. Explore more and FAQs on our website

www.brickstack.org

Adult Wheelthrowing Workshop

**February 18th and 20th
6:30-9:30PM**

Follow through on your New Year's resolution to learn something new by joining us for a Two Session Wheel Throwing Workshop with instructor David LaPierre; All experience levels are welcome. \$115 Workshop fee includes clay, glaze and firing. Masks required.

Ages 16+, Keep up to four items.



Commercial Glaze Mini Workshop

February 28th, 1:30-2:30PM

Curious about how to use commercially made glazes at Community Kiln?

Join us for a mini workshop, Friday February 28th from 1:30-2:30PM to learn techniques for applying brush on glazes and Community Kiln rules and regulations for using these glazes. No registration necessary!

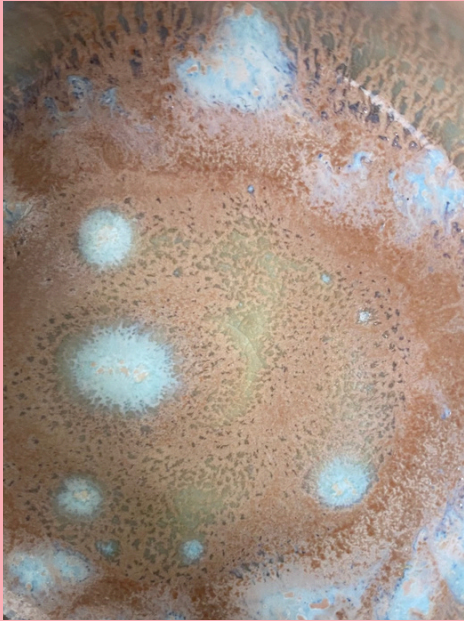


Donate Here

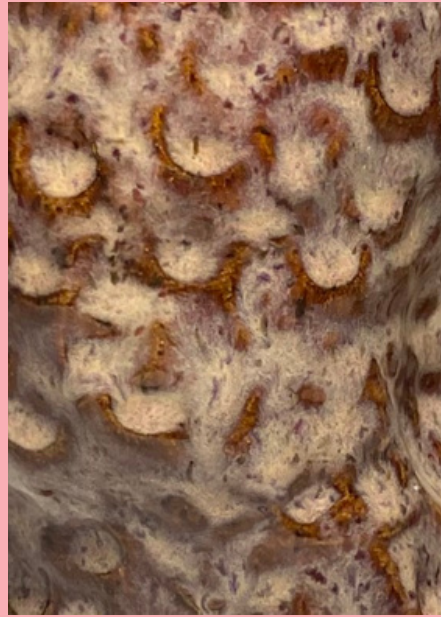
Donate directly to
Community Kiln through the
QR code!



Check these out!



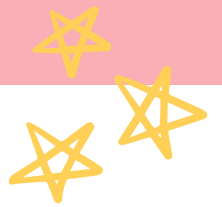
Mayco Oyster over Celedon bloom on white clay



Mayco Coral Sands over Speckled Plum on reclaim clay

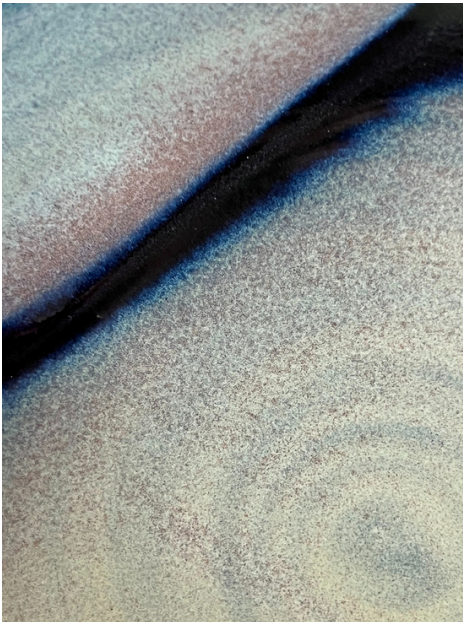
Learn how to use Commercial Glazes like these at our mini workshop, **Friday, February 28th from 1:30-2:30PM**

No registration necessary!



Amazing Glazes

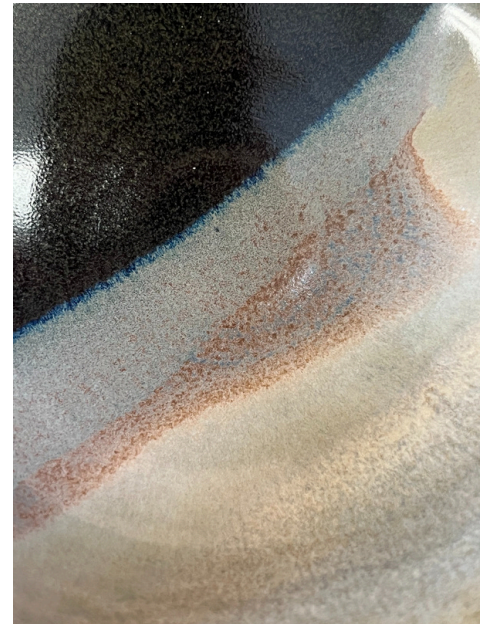
Stunning combinations using Community Kiln glazes!



Rutile Green over Black Beauty by Nancy



Randy's Red by Misung



Marigold and Obsidian over Black Beauty and Randy's Red by Pat

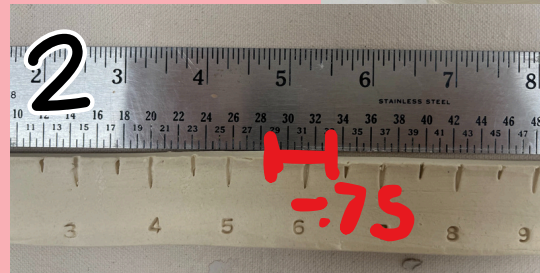
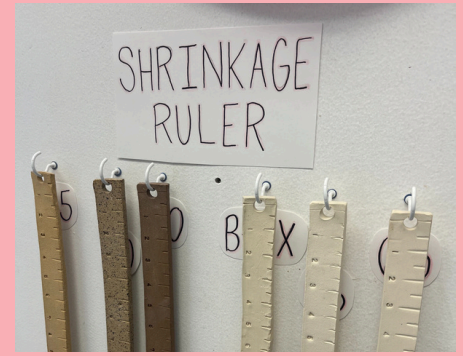
Shrink Rulers

WHAT ARE THOSE?

Have you seen those clay rulers hanging up in the handbuilding area? Aside from being a stylish wall decoration, these pieces have a significant purpose. As clay is cycled through the firing process, your pots will shrink! As the clay is heated in the kilns, water molecules are evaporated and the particles of remaining organic material will compact closer, causing your clay to shrink. The average clay body at Community Kiln will shrink about 12% when fully fired.

So how do I calculate shrinkage?

First, use a regular ruler to measure your pot. This pot measures 5.5 inches tall. Then, line up the shrink ruler of your chosen clay body with the regular ruler. Measure the difference between 5.5 inches on the shrink ruler and 5.5 inches on the regular ruler. This difference is around 3/4 of an inch. Subtract .75 inch from 5.5 inches to find the size of your pot after firing ($5.5 - .75 = 4.75$ inches). Checking with a shrink ruler is a good way to visualize how much your product will change in size as it continues through the pottery process. For more information and instructions [click here!](#)



3 $5.50'' - .75'' = 4.75''$

Staying Updated

Please check your student account to pay any outstanding fees from Fall 2024

Follow us!

 @CommunityKilnCeramics

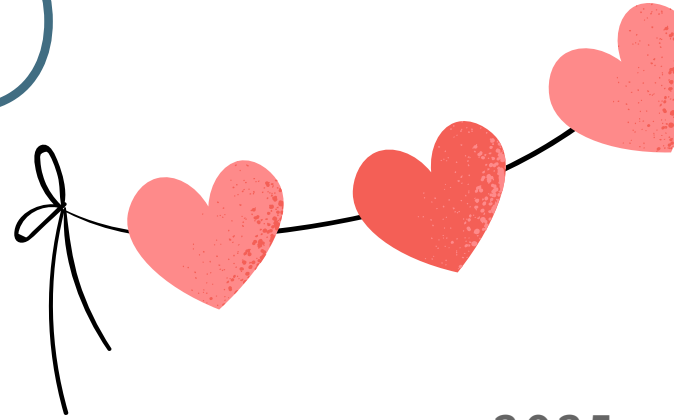
 @community_kiln



We have Community Kiln merchandise and ceramic tools for sale in the office!

Please see Natalie if you would like to purchase anything

OPEN STUDIO



FEBRUARY

2025

SUN	MON	TUE	WED	THU	FRI	SAT
						1 Open Studio 10:00-4:00PM
2 Open Studio 10:00-4:00PM	3 Open Studio 1:30-4:30PM	4	5 Open Studio 2:00-5:00PM	6 Open Studio 1:00-4:00PM	7 Open Studio 12:30-3:30PM	8 Open Studio 10:00-4:00PM
9 Open Studio 10:00-4:00PM	10 Open Studio 1:30-4:30PM	11	12 Open Studio 2:00-5:00PM	13 Open Studio 1:00-4:00PM	14 Open Studio 12:30-3:30PM	15 Open Studio 10:00-4:00PM
16 No	17 Open	18 Studios	19 February	20 February	21 Vacation	22 Vacation
23 Open Studio 10:00-4:00PM	24 Open Studio 1:30-4:30PM	25	26 Open Studio 2:00-5:00PM	27 Open Studio 1:00-4:00PM	28 Open Studio 12:30-3:30PM	

OPEN STUDIO



MARCH

2025

SUN	MON	TUE	WED	THU	FRI	SAT
						1 Open Studio 10:00-4:00PM
2 Open Studio 10:00-4:00PM	3 Open Studio 1:30-4:30PM	4	5 Open Studio 2:00-5:00PM	6 Open Studio 1:00-4:00PM	7 Open Studio 12:30-3:30PM	8 Open Studio 10:00-4:00PM
9 Open Studio 10:00-4:00PM	10 Open Studio 1:30-4:30PM	11	12 Open Studio 2:00-5:00PM	13 Open Studio 1:00-4:00PM	14 Open Studio 12:30-3:30PM	15 Open Studio 10:00-4:00PM
16 Open Studio 10:00-4:00PM	17 Open Studio 1:30-4:30PM	18	19 Open Studio 2:00-5:00PM	20 Open Studio 1:00-4:00PM	21 Open Studio 12:30-3:30PM	22 Open Studio 10:00-4:00PM
23 Open Studio 10:00-4:00PM	24 Open Studio 1:30-4:30PM	25	26 Open Studio 2:00-5:00PM	27 Open Studio 1:00-4:00PM	28 Open Studio 12:30-3:30PM	29 Open Studio 10:00-4:00PM
30 No Open Semester	31 Studios Vacation					



Come and Join

COMMUNITY KILN
AT BRICK STACK ARTS CENTER

A PROGRAM OF **S M C**

***22 February, 2025
9AM***

Spring Registration

Classes start April 6th and run for 10 weeks long. Registration for Spring 2025 classes opens on **Saturday, February 22nd at 9AM.**

To read more on our policies and see more class information, visit our website at

www.brickstack.org



COMMUNITY KILN
AT BRICK STACK ARTS CENTER

A PROGRAM OF  SMOC

TALK TO US

communitykiln@smoc.org

508-309-4604

All Level Wheelthrowing

Sunday 6PM - 9PM

Tuesday 10AM - 1PM

Tuesday 6:30PM - 9:30PM

Thursday 10AM - 1PM

Friday 9AM - 12PM

Intermediate Wheelthrowing

Monday 6:30PM - 9:30PM

Thursday 6:30PM - 9:30PM

Handbuilding

Wednesday 9:30AM - 1:30PM

Wednesday 6:30PM - 9:30PM

Sculptural Handbuilding

Monday 10AM - 1PM

www.brickstack.org



COMMUNITY KILN
AT BRICK STACK ARTS CENTER

A PROGRAM OF  S M O C

TALK TO US

communitykiln@smoc.org

508-309-4604

Kids Clay

Tuesday 4PM - 6PM

Students ages 9 -12 will learn to create one of a kind ceramics using basic handbuilding techniques. Tuition includes instruction, clay, glaze, underglazes, and firing. Class meets for 8 weeks.

Teen Clay

Thursday 4:15PM - 6:15PM

Teens will explore both wheelthrowing and handbuilding to develop their unique artistic styles. Advanced students coming into this class can work with the instructor to create projects to fit their skill level and challenge themselves. Tuition includes 25 lbs of clay, firing costs and glazing. Class meets for 8 weeks.

www.brickstack.org

COMMUNITY KILN
AT BRICK STACK ARTS CENTER

A PROGRAM OF **S M C**



WHEEL THROWING WORKSHOP

FEBRUARY 18TH AND 20TH

6:30PM – 9:30PM

Two session wheel throwing workshop with David LaPierre. All experience levels welcome.

Ages 16+, \$115, Keep up to four pots.

Masks Required.

REGISTRATION: WWW.BRICKSTACK.ORG

LOVEBIRDS

VALENTINE'S DAY PARTY



Birds or a feather flock to Community Kiln for this Valentine's Day event. Make pairs of hand built lovebirds with instructor Zen Crosby. Celebrate love with the price of two for one and bring your pal, partner or parent. Ages 16+

6-9PM
@ Community Kiln
46 Park Street,
Framingham, MA

02.14.25
\$60

REGISTER AT
WWW.BRICKSTACK.ORG

COMMUNITY KILN
AT BRICK STACK ARTS CENTER

A PROGRAM OF **SMOC**

Fundraising for a special

RAKU FIRING



Who: In collaboration with Framingham State University and Framingham High School, Community Kiln is raising funds for a raku firing.

What: A raku firing is a type of alternative finishing for ceramics. Our fundraising goal is \$4,500 to ensure this event will be FREE to participants.

More details on participation to come.

How to Donate:

Donate to Community Kiln [directly here](#) with “Raku Firing” in the comments

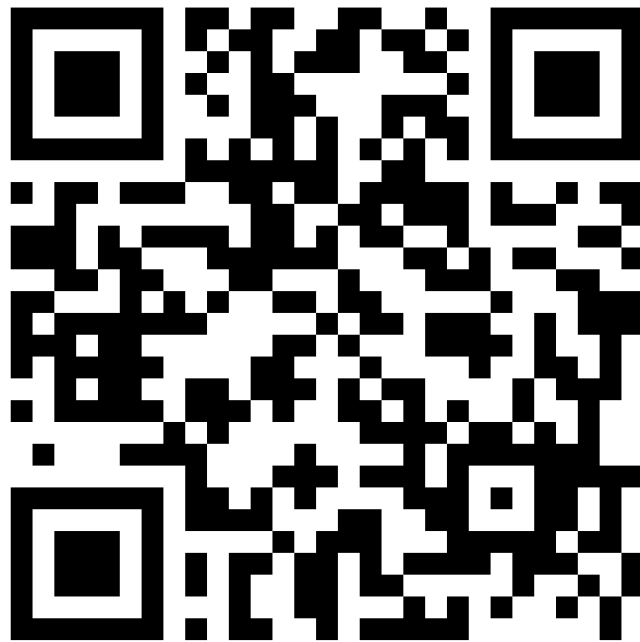




Q&A



Have a question? Write
in to the newsletter to
have it answered.



@community_kiln

