



Community Kiln



What's New

BY NATALIE DAHL

I am so sad to see our Spring 2026 semester come to a close. We saw incredible growth in our beginner students and amazing creativity from returning students. A variety of students explored abstract forms by combining smaller bowls together, altering thrown forms into ovals and creating textural vases. Community Kiln hosted some very successful workshop- including a Crystalline firing and Berry Bowl Workshop where we welcomed new community members as well as returning ones to advance their knowledge of pottery.

As our Spring 2026 classes come to a close, we hope see you all again for another class in the future. Summer ONE, 2026 classes are full and accepting waitlist only.

Inside:

Meet our Summer Intern	pg. 2
Surface Design Exploration	pg. 3
Studio Happenings	pg. 4
Amazing Glazes	pg. 5
Clay Offerings	pg. 6
Staying Updated	pg. 6
Check out these Opportunities!	pg. 7-19

Meet our Summer Intern!

KEIRA LAVELLE

Please welcome our third recipient of our College Level Studio Membership, Keira (she/her). Keira is a rising Sophomore studying Fine Arts at the School of the Museum of Fine Arts at Tufts (SMFA) Class of 2029.

Q: What inspires you?

A lot of my work is about the people in my life- my community, friends, family. My latest work is about rituals and gift giving. I made sets of ceramic tableware and each piece was inspired by a person in my life. I find myself gravitating towards Indonesian, Chinese and Irish patterns as a part of my heritage and culture.

Q: What inspired you to become an artist?

I have been doing art since I can't even remember- I don't think I can trace back a specific start. Seeing myself not doing art was never an option for me. My parents raised me to be very creative. My mom is an Indonesian Immigrant and wasn't able to pursue art as a career and as a pivot- she became a dentist. Growing up she always encouraged me follow my dreams.

If you see Keria around in the studio make sure to stop by and say hi!



Photos courtesy of Keira



Quick Tips

YOU'LL NEED TO KNOW THIS!

Hotter months mean lots of challenges in pottery. Kilns have to be staggered to accommodate for hot, Summer days, and wet clay is increasingly harder to keep at the perfect texture. Shelving can become crammed as projects pile up during our abbreviated kiln schedules. How can you manage all of these problems?!

- Keep covered objects on your own shelves for slow drying. This is the BEST place to monitor work for potential cracks and control how fast/slow your work dries.
- Slower, even drying means less cracks. Putting wet objects on the shelves in the back room can lead to abrupt changes in temperature, drying pieces out too fast.
- Wait until your pieces are bone dry to add them to the shelves in the back. Because space is limited during these hot months, we appreciate you keeping drying work(s) on your personal shelves!

Surface Design Explorations

FOUR TECHNIQUES TO EXPLORE



There's always new techniques to learn for ceramics. Take a look at these four ideas to get inspired for your next project. Want to learn more? See instructors Meghan Albee and Amy Syder demonstrate each technique during our surface design series in July. Each technique will be presented every Friday in July, 6:30-8:30PM. \$40/each session. Register through visiting www.brickstack.com

WATER ETCHING

Water Etching is a ceramic technique that helps achieve raised surface patterns and designs. On a bone dry greenware piece of clay, apply wax resist in the shape of your design. Gently wipe the clay surface with a damp sponge, slowly removing the clay around the waxed design. Your finished result should leave the waxed area raised and the wiped areas lower "etching" your final design into the clay. This technique is best for clays without grog in them.

MAKING AND USING STAMPS

Texture can be achieved in many ways. Texture rollers can roll a continuous pattern on clay, texture mats can be placed on top of clay and pressed in for patterns, or stamps can create unique textures. Common materials such as popsicle sticks, polymer clay and cardboard can be turned into simple stamp making tools, and stamps can be utilized to create patterns, textures, words and more. Try exploring with simple materials to create repeating patterns to elevate your clay!

SLIP TRAILING

Slip trailing is a great technique to give fine details without the hassle of slipping and scoring tiny pieces of clay onto a project. Using a thick slip in a piping bottle, pipe on your design to your clay body. Different explorations can be made through changing the piping bottle tips. The finished result will give you a raised surface, like decorations on a cake.

USING NATURAL MATERIALS

Flowers, pasta, and other natural materials can make beautiful stamps for ceramics. Explorations with patterned and veined leaves can produce beautiful, subtle decorations on clay pieces. Place your natural materials onto your leather-hard clay piece and roll over it with a brayer to leave a natural stamp. To the best of your abilities, please remove any type of combustible materials from your clay work. Combustibles can cause extra wear and tear on our equipment and produce additional smoke.



Upcoming Events



Surface Design Series

Fridays in July: 6:30-8:30PM

Looking for something to expand your artistic toolbox? This might be the series for you! Instructors Meghan Albee and Amy Snyder will guide you through surface design techniques, expanding your skills toolbox and encouraging you to further manifest your ideas in clay. All workshops will include demonstration, discussion, use and care of tools as well as hands-on practice.

These workshops are for Community Kiln students past and present, 18+. \$40/each session. Register at www.brickstack.org

Studio Cleanup

Wednesday, July 1st, 3-6PM

Spring 2026 is coming to an end. Come make an impact and clean our studio space!

As a "Thank You" to all of our cleaning volunteers we will have an open studio from 12-3PM (right before our cleaning).

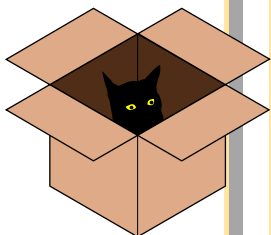
Can't make it? Clean out your personal space and free up some room in your cubby!

Parent-Child Clay Night Out!

Friday, June 12th, 4-6:30PM

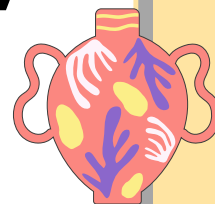
In this parent-child workshop, students will handbuild ceramic boxes out of clay. \$50 registration per person. Children aged 12 and up are welcome!

For more information and registration visit www.brickstack.org



Intro to Clay

***June 29th - July 1st,
9:30-11:30AM***



This summer program is an introduction to ceramics for our littlest artists. Students aged 6-10 will explore clay through pinching, coiling, slab building, and mini sculpture projects. Throughout the three days, youth students will be presented with mini projects and games to grow their joy for ceramics!

More information and registration at www.brickstack.org

Highlight on: Rutile Green

ALL ABOUT YOUR FAVORITE GLAZES!

Rutile Green is a warm, glossy green glaze. Rutile Green receives its green color through the chemicals Rutile (hence the name) and Copper Carbonate. The tan pigment of the Rutile, combined with the blue pigment of the Copper, give Rutile its subtle green hue. Carefully layer Rutile with itself for a brighter, green pigment or with other colors to get rich glaze combinations.

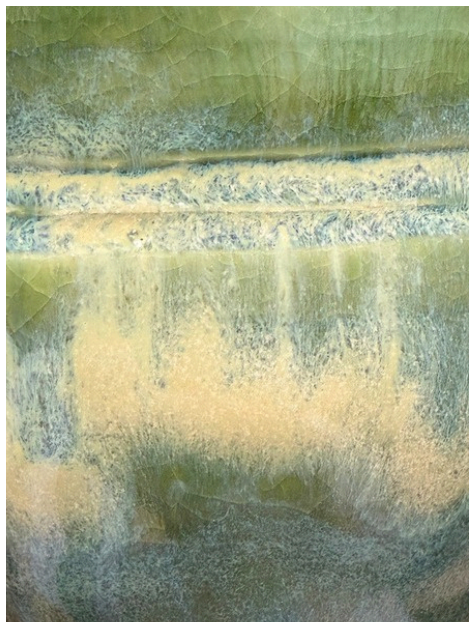
Beware: Glaze combinations with Rutile Green are susceptible to becoming too thick and running! Watch out when using Rutile with Purple Haze and Sanora, these glazes have been known to run and crawl. Rutile is a moderately hard glaze to use because of its variation in color and nuanced ability to play well with other glazes- beginners beware.



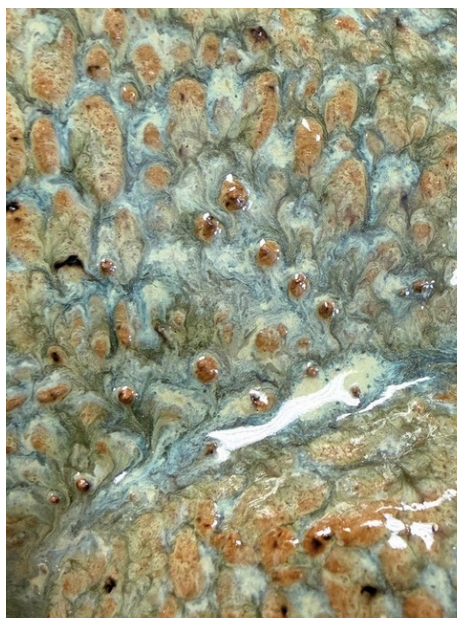
Rutile Green x1 on White Clay

Amazing Glazes

Stunning combinations using Community Kiln glazes!



Rutile/Eggshell Matte
By Chris



Nutmeg/Rutile
By Meghan



Rutile/Purple Haze
By Amanda



Clay Updates

STAY UP TO DATE ABOUT OUR OFFERINGS

In early May, our clay supplier, Portland Pottery, let us know about ongoing supply issues from Laguna Clay Company. The material RedArt is currently unavailable, as mining operations are temporarily paused due to broader global supply and production challenges. RedArt is a key ingredient in several popular mid-rang clay bodies, they expect limited availability and temporary shortages of some Laguna clays for an undetermined amount of time. Laguna #60 clay (impacted) was replaced with Laguna #50 clay (not impacted) and Laguna #90 (impacted) with Standard 211 (not impacted).

As Laguna Clay supplies continue to become available again, they hope to be able to offer their normal selection of #90, #45 and #60 clays. Even through production of these popular clay bodies has resumed, we want to highlight that there will be slight differences. Customers may notice that the recently mined Red Art Clay is denser, less plastic, more refractory, and fires to a lighter color than previous material.

Red Art Clay is a component of many of Laguna's red clay bodies. Laguna is working closely with the manufacturer, Cedar Heights, and their internal team to test and rework to the best of their abilities in effort to reformulate as closely as they can to the original color and workability. Please stay tuned.



Staying Updated

Please check your student account to pay any outstanding fees from Spring 2026

Follow us!

 @CommunityKilnCeramics

 @community_kiln



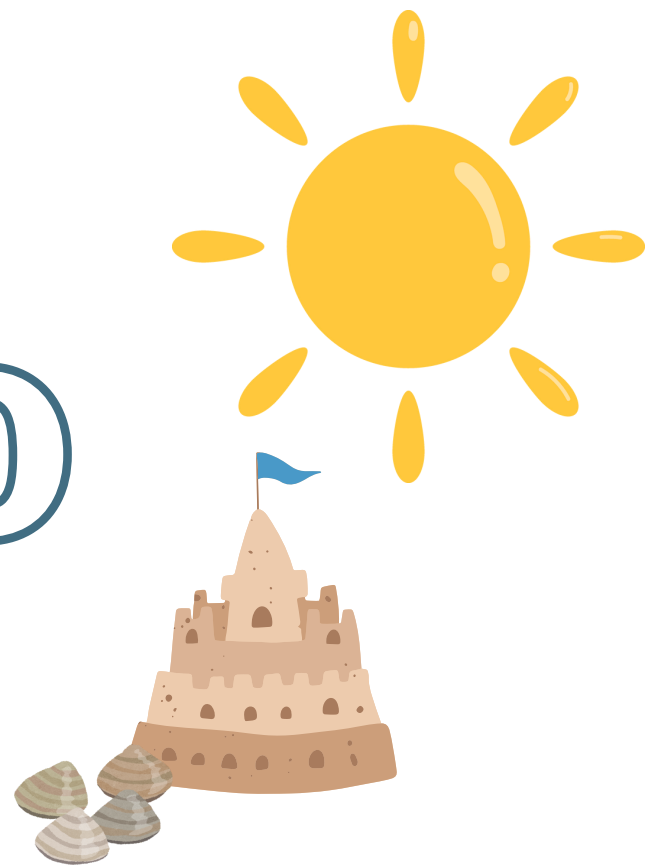
We have Community Kiln merchandise and ceramic tools for sale in the office!



Please see a CK employee if you would like to purchase anything

We are constantly updating our website and would love to use any images of your work, daily studio activities, classes and teachers or our studio community. **Do you have an image you would like to share?** Submit your images to ndahlesmoc.org with the artist's name and title of the work.

OPEN STUDIO



JUNE

Masks Required
Thursday

2026

SUN	MON	TUE	WED	THU	FRI	SAT
	1 Open Studio 1:30-4:30PM	2	3 Open Studio 2:00-5:00PM	4 Open Studio 1:00-4:00PM	5 Open Studio 12:30-3:30PM	6 Open Studio 10:00-4:00PM
7 Open Studio 10:00-4:00PM	8 Open Studio 1:30-4:30PM	9	10 Open Studio 2:00-5:00PM	11 Open Studio 1:00-4:00PM	12 Open Studio 12:30-3:30PM	13 Open Studio 10:00-4:00PM
14 Open Studio 10:00-4:00PM	15 Open Studio 1:30-4:30PM	16	17 Open Studio 2:00-5:00PM	18 Open Studio 1:00-4:00PM	19 No Open Studios Juneteenth	20 Open Studio 10:00-4:00PM
21 Open Studio 10:00-4:00PM	22 Open Studio 1:30-4:30PM	23	24 Open Studio 2:00-5:00PM	25 Open Studio 1:00-4:00PM	26 Open Studio 12:30-3:30PM	27 Open Studio 10:00-4:00PM
28 No Open Studios	29 No Open Studios	30 Semester Break				

OPEN STUDIO



JULY

2026

Masks Required
Thursday

SUN	MON	TUE	WED	THU	FRI	SAT
No	Open	Studios	1	2	3	4
5 Open Studio 10:00-4:00PM	6 Open Studio 1:30-4:30PM	7	8 Open Studio 2:00-5:00PM	9 Open Studio 1:00-4:00PM	10 Open Studio 12:30-3:30PM	11 Open Studio 10:00-4:00PM
12 Open Studio 10:00-4:00PM	13 Open Studio 1:30-4:30PM	14	15 Open Studio 2:00-5:00PM	16 Open Studio 1:00-4:00PM	17 Open Studio 12:30-3:30PM	18 Open Studio 10:00-4:00PM
19 Open Studio 10:00-4:00PM	20 Open Studio 1:30-4:30PM	21	22 Open Studio 2:00-5:00PM	23 Open Studio 1:00-4:00PM	24 Open Studio 12:30-3:30PM	25 Open Studio 10:00-4:00PM
26 Open Studio 10:00-4:00PM	27 Open Studio 1:30-4:30PM	28	29 Open Studio 2:00-5:00PM	30 Open Studio 1:00-4:00PM	31 Open Studio 12:30-3:30PM	

Intro to Clay

June 29th-July 1st,
9:30-11:30AM

\$105

This summer program is an introduction to ceramics for our littlest artists. Students aged 6-10 will explore clay through pinching, coiling, slab building, and mini sculpture projects. Throughout the three days, youth students will be presented with mini projects and games to grow their joy for ceramics!

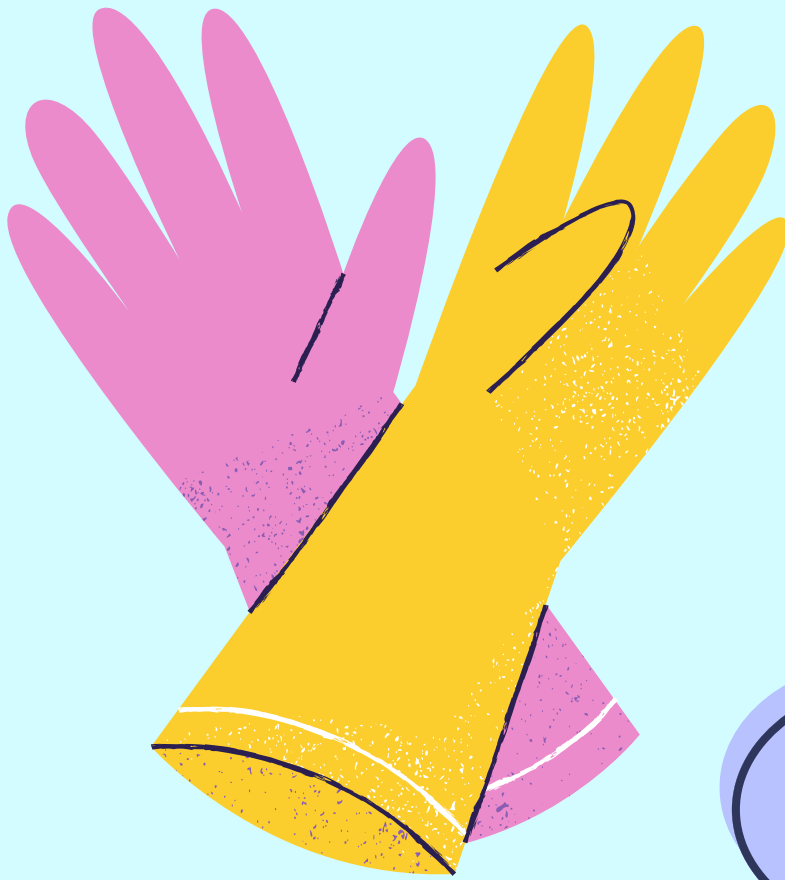
Class takes place at our Framingham studio from 9:30-11:30AM, June 29th-July 1st. We recommend that students attend all days— there will not be make up sessions available.

\$105, all materials included.



COMMUNITY KILN
AT BRICK STACK ARTS CENTER
A PROGRAM OF **SMOC**

**SIGN UP AND REGISTER NOW
AT WWW.BRICKSTACK.ORG**



COMMUNITY KILN
AT BRICK STACK ARTS CENTER
A PROGRAM OF **S M C**

July 1st,
3-6PM

STUDIO CLEANING DAY

Come and help us tidy up our space!

To say "Thank You" to all of our cleaning day volunteers, join us from 9:30-12:30PM on April 1st for a free open studio.

If you can not make it help out when you can and clean out your cubby. Make space for new items, wipe down any dirty surfaces or reorganize anything disorderly in the studio.

We appreciate ALL of your help.

OUT ART

OPENING RECEPTION

★ JUNE 7TH
5-8 PM

CLOSING RECEPTION

JULY 26TH
5-8 PM



CELEBRATING
QUEER
CREATION

— ♡ —

FAMILY
FRIENDLY

♡

FEATURING
10
ARTISTS



ART



MUSIC



SNACKS

ON VIEW JUNE + JULY

THE FRAME
SHOP
NATICK, MA ♡



DETAILS & RSVP

ALL ARE WELCOME

♡ ♡ ♡ ♡ ♡ ♡ ♡



SURFACE DESIGN SERIES



LOOKING FOR TECHNIQUES TO ELEVATE YOUR ART?
THIS MAY BE THE SERIES FOR YOU!

\$40
EACH
SESSION



Instructors Meghan Albee and Amy Snyder will guide you through surface design techniques, expanding your skills toolbox and encouraging you to further manifest your ideas in clay. All workshops will include demonstration, discussion, use and care of tools as well as hands-on practice. We will share our favorite tools, tips and tricks as well as orientation to find tools within the studio and resources to explore more. These workshops are for Community Kiln students past and present, 18+

WORKSHOP DETAILS

FRIDAYS IN JULY
6:30-8:30PM

REGISTER AT WWW.BRICKSTACK.ORG

WHAT YOU WILL LEARN:

- July 10th: Slip Trailing with Meghan
- July 17th: Using Natural Materials with Amy
- July 24th: Water Etching with Meghan
- July 31st: Stamp Making with Amy

Summer Registration

Our Summer Session is split into two sessions, Summer I and Summer II; Each run for 5 weeks long.

Registration for Summer I (July 5th - August 8th) classes opens on **Saturday, June 6th at 9AM.**

Registration for Summer II (August 16th - September 19th) opens on **Saturday, July 18th at 9AM.**

To read more on our policies and see more class information, visit our website at

www.brickstack.org

COMMUNITY KILN
AT BRICK STACK ARTS CENTER

A PROGRAM OF **S M C**

COMMUNITY KILN
AT BRICK STACK ARTS CENTER

A PROGRAM OF **S M C**

TALK TO US

communitykiln@smoc.org

508-309-4604

All Level Wheelthrowing

Sunday 6PM - 9PM

Tuesday 10AM - 1PM

Tuesday 6:30PM - 9:30PM

Thursday 10AM - 1PM

Friday 9AM - 12PM

Intermediate Wheelthrowing

Monday 6:30PM - 9:30PM

Thursday 6:30PM - 9:30PM

Handbuilding

Wednesday 9:30AM - 1:30PM

Wednesday 6:30PM - 9:30PM

Sculptural Handbuilding

Monday 10AM - 1PM

www.brickstack.org

COMMUNITY KILN
AT BRICK STACK ARTS CENTER

A PROGRAM OF 

TALK TO US

communitykiln@smoc.org
508-309-4604

Kids Clay

Tuesday 4PM - 6PM

Students ages 9 -12 will learn to create one of a kind ceramics using basic handbuilding techniques. Tuition includes instruction, clay, glaze, underglazes, and firing. Each session meets for 5 weeks.

Teen Clay

Thursday 4:15PM - 6:15PM

Both handbuilding and wheelthrowing exploration is encouraged. Class discussions and critiques of fired works will allow students to better explore these individual styles. Tuition includes instruction, 25 lbs of clay, firing costs, underglazes and glazing. Each session meets for 5 weeks.

www.brickstack.org

SUMMER CLASSES 2026



**COMMUNITY KILN
AT BRICK STACK ARTS CENTER**

A PROGRAM OF **S M C**

SUMMER 1
July 5 - August 8th

SUMMER 2
August 16th -
September 19th

Kids Clay

Tuesday 4PM - 6PM

Students ages 9 -12 will learn to create one of a kind ceramics using basic handbuilding techniques. Tuition includes instruction, clay, glaze, underglazes, and firing. Each session meets for 5 weeks.

\$175

Teen Clay

***Thursday 4:15PM -
6:15PM***

Teens ages 13-18 will explore methods and strategies to create their own, unique ceramic pieces. With a focus on handbuilding techniques, students will learn to make a variety of functional items such as bowls, mugs and dishes, as well as decorative objects. Each session meets for 5 weeks.

\$215

TALK TO US

communitykiln@smoc.org
508-309-4604

WWW.BRICKSTACK.ORG

TOOLS FOR SALE

COMMUNITY KILN

LT5  **\$5**

KSP4  **\$6**

Mudtools Do All  **\$25**



Wooden Rib  **\$8**


S-10 X Serrated  **\$3**

S-4 X Scraper  **\$3**


S-6 X Scraper **\$3**

S-11S Serrated  **\$4**

Mudtools R5  **\$9**

Mudtools Y1  **\$9**

Mudtools G2  **\$9**

Mudtools B3  **\$9**

TOOLS FOR SALE

COMMUNITY KILN

Pin Tool



\$4

COH Fettling Knife



\$5

Wire Cutter



\$5

Hake 1' Glaze Brush



\$4.25

Sponge



\$2

Chamois



\$.50

Kemper 402



\$6

Wood Tool



\$1

Calipers



\$10

Kemper WLS



\$4

Doo Woo Paddle 4-9



\$25

TOOLS FOR SALE

COMMUNITY KILN

Beginner Tool Set

\$30



Sponge



Large Loop Tool



Small Loop Tool



Clay Cutter



Needle Tool



Wooden Rib

Metal Rib



Wooden Knife