



Community Kiln



What's New

BY NATALIE DAHL

As we're nearing the end of our Winter 2025 programming, I wanted to thank everyone for making this a great semester. We saw some awesome projects go through the kilns and, as always, many thoughtful ideas brought to the studio by our amazing instructors. Reminders for Winter 2025 closing as well as registration reminders for Spring 2025 will be in your inbox soon, so don't forget to read through those. We have a lot of great March programming and workshops for everyone! More details can be found on the "upcoming events" page and the tail end of the newsletter on pages 6-14.

Inside:

Sanding Ceramics	pg. 2
Purchasing Clay	pg. 2
Upcoming Events	pg. 4
Amazing Glazes	pg. 4
Shrink Rulers	pg. 5
Staying Updated	pg. 5
Check out these Opportunities!	pg. 6-14

Sanding Ceramics

STUDIO SAFETY

Sanding your ceramics creates beautiful, smooth pieces and it's a way of removing any last imperfections. While this is a necessary technique, we exist in a communal studio and it is important to think about the long term effects of sanding. Clay dust, when airborne, can remain in the atmosphere for days. Silica, one of the main ingredients in clay and glaze, is too heavy to be expelled from lungs. When silica is breathed in, it will settle at the bottom of the lungs, causing breathing and health issues if accumulated in too large quantities.



Follow these tips below to ensure safety for all in the studio!

1. Sand all vessels outside. We know it's cold out, but this is the best practice to minimize dust.
2. Sand "wet on wet" using wet bisqueware/greenware and wet sandpaper. This prevents dust from going airborne.
3. Clean! Clean your space and surfaces with a wet sponge to reduce dust in the studio.
4. Wear a mask in the studio to avoid inhaling clay particles.

Purchasing Clay?

TELL YOUR INSTRUCTOR!

Have you gotten a bag of clay during the Winter 2025 session? Your instructor should be informed of each bag of clay that you take and write it down accordingly. Included in your registration for a 10 week long class is one, free 25 pound bag of clay. Additional bags can be purchased for your second bag \$28, third bag \$28 and fourth bag for \$40. Reclaimed bags of clay can be purchased at a less expensive price.

It is not permitted to take clay during open studios, only during class time. During the Winter 2025 session, we have had several hundred pounds of clay unrecorded. Help us solve the mystery of our missing clay and check in with your instructor about how much clay they have recorded for you. All clay charges are made at the end of the semester and charged to your card on file. Community Kiln thanks you for your honesty!





Upcoming Events



Community Cleanup

Wednesday, April 2nd

12:30-3:30PM



Winter 2025 is coming to an end. Come make an impact and clean our studio space! As a "Thank You" to all of our cleaning volunteers we will have an open studio from 9:30-12:30PM (right before our cleaning).

Can't make it? Clean out your personal space and free up some room in your cubby!

Clay Night Out!

Bird and Bee Baths

April 11th, 6-9PM

Join us on April 11th to make your own handbuilt, stoneware bird bath and pollinator hydration station. This three hour workshop is open to Community Kiln students, past and present. \$60 workshop fee includes all clay, firing and glaze costs.

Ages 12+ welcome. Register at www.brickstack.org



Clay Night Out!

Miniature Sculptures

March 28th, 6-9PM

Enjoy a clay night out with your partner, pals or parents. Come and make mini sculptures with instructor Meghan Albee. Combining ceramics and sculpture, this Henry Moore-inspired workshop will make you think about clay differently. This workshop will teach movement, flow, and working from all angles to create a cohesive ceramic sculpture.

Ages 12+ welcome. Register at www.brickstack.org



Glazing Workshop

March 22nd, 4-6PM

Do you need help glazing those gorgeous pots you made this semester? Maybe you're a returning student and want to learn some more glazing techniques and tricks. Join us for a glazing workshop March 22nd from 4-6PM. Beginner and Intermediate friendly.

More information and register at www.brickstack.org

Matte Glazes



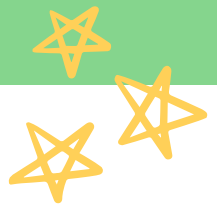
Stunning combinations using Community Kiln glazes!

What makes those beautiful, dusty surfaces that are characteristic of matte glazes?

The secret lies in the formula. Matte glazes are, at their core, "unstable" recipes. The ingredients that compose our matte formulas are calculated specifically to not fully melt, leading to the surface of the glaze to appear not glossy. In the past few years matte glazes have been debated being "not food safe." What is acceptable to you is an individual decision. To determine food safety there are some basic tests you can complete such as an acid test to see if your glaze color changes. The only true way to determine ultimate glaze/ceramic safety is to have your pieces lab-tested.



*Iron Breaking Matt on brown clay
By Misung*



Amazing Glazes

Stunning combinations using Community Kiln glazes!



*Iron Breaking Matt/Celedon
By Terri*



*Celedon/Randy's Red
by Emily*



*Celedon/Pine
by Beth*

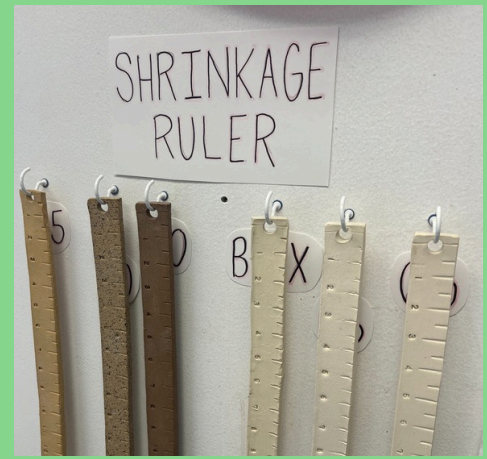
Shrink Rulers

CALCULATE IT IN REVERSE!

On last month's issue we covered figuring out clay shrinkage on greenware clay, but you can also use clay rulers to calculate how much glazeware has shrunk. How would that work with a clay ruler?

Say you have a glazed bowl that you absolutely love and want to replicate. If you were to make the same bowl, with the same dimensions as your finished piece, by the time your new piece was fully finished it would be 12% smaller than the original! To calculate the true dimensions your clay started at, simply take the clay ruler and measure your finished piece. Whatever the measurement reads on the clay ruler is the measurement that you should make your greenware piece.

For example- This glazed piece reads 8 inches across with the glaze ruler. When remaking this piece in greenware, measure with a regular ruler to 8 inches to have a perfect match at the end of firing! This technique is best used when calculation dimensions of glazeware pieces that you would like to replicate.



Staying Updated

Please check your student account to pay any outstanding fees from Winter 2025

Follow us!

 @CommunityKilnCeramics

 @community_kiln



We have Community Kiln merchandise and ceramic tools for sale in the office!

Please see Natalie if you would like to purchase anything

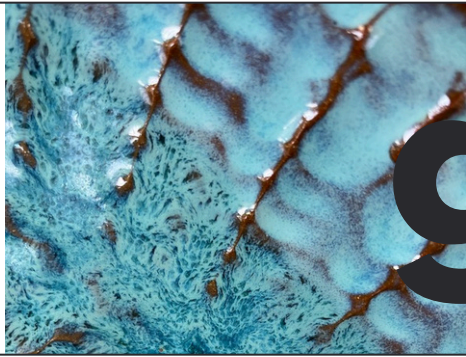
OPEN STUDIO



MARCH

2025

SUN	MON	TUE	WED	THU	FRI	SAT
						1 Open Studio 10:00-4:00PM
2 Open Studio 10:00-4:00PM	3 Open Studio 1:30-4:30PM	4	5 Open Studio 2:00-5:00PM	6 Open Studio 1:00-4:00PM	7 Open Studio 12:30-3:30PM	8 Open Studio 10:00-4:00PM
9 Open Studio 10:00-4:00PM	10 Open Studio 1:30-4:30PM	11	12 Open Studio 2:00-5:00PM	13 Open Studio 1:00-4:00PM	14 Open Studio 12:30-3:30PM	15 Open Studio 10:00-4:00PM
16 Open Studio 10:00-4:00PM	17 Open Studio 1:30-4:30PM	18	19 Open Studio 2:00-5:00PM	20 Open Studio 1:00-4:00PM	21 Open Studio 12:30-3:30PM	22 Open Studio 10:00-4:00PM
23 Open Studio 10:00-4:00PM	24 Open Studio 1:30-4:30PM	25	26 Open Studio 2:00-5:00PM	27 Open Studio 1:00-4:00PM	28 Open Studio 12:30-3:30PM	29 Open Studio 10:00-4:00PM
30 No Open Semester	31 Studios Vacation					

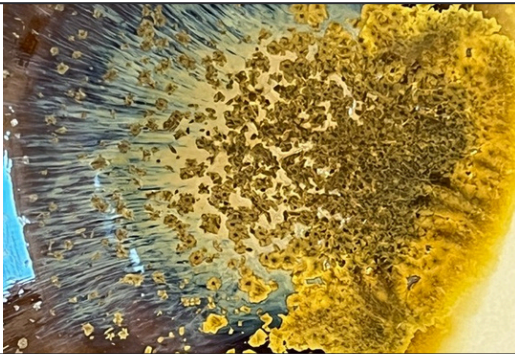


glazing

work-



shop *



Waiting to finish your bisqueware pieces because you just can't decide how to glaze them? Maybe you need to brush up on your glazing techniques? Whatever the reason, this workshop is for all levels. Learn the tips and tricks of our studio glazes at Community Kiln with instructor Meghan Albee.

22 MARCH 2025

4-6PM

REGISTRATION FEE:

\$35.00

**BRING YOUR OWN
BISQUEWARE*

Visit our website for registration and more information at www.brickstack.org



CLAY NIGHT OUT!

\$45

**28 MARCH 2025,
6-9PM**

Enjoy a clay night out with your partner, pals or parents. Come and make mini sculptures with instructor Meghan Albee. Combining ceramics and sculpture, this Henry Moore-inspired workshop will make you think about clay differently.

Students will learn and use sculpting and handbuilding techniques to create abstract art pieces, "miniature sculptures". All students will leave this class with 1-2 mini sculptures. Ages 12+



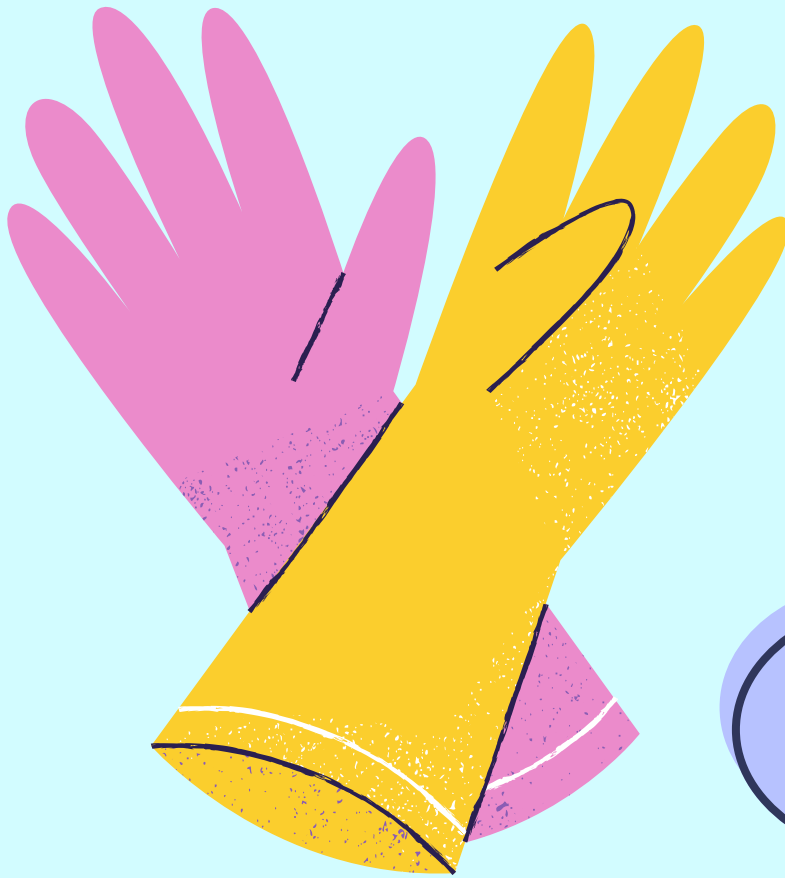
REGISTER AT

www.brickstack.org



COMMUNITY KILN
AT BRICK STACK ARTS CENTER

A PROGRAM OF **S M C**



April 2nd,
12:30-3:30PM

STUDIO CLEANING DAY

Come and help us tidy up our space!

To say "Thank You" to all of our cleaning day volunteers, join us from 9:30-12:30PM on April 2nd for a free open studio.

If you can not make it help out when you can and clean out your cubby. Make space for new items, wipe down any dirty surfaces or reorganize anything disorderly in the studio.

We appreciate ALL of your help.

Bird and Bee Baths

April 11th, 6-9PM

This workshop is FOR THE BIRDS! (and the bees) Join us on April 11th to make your own handbuilt, stoneware bird bath and pollinator hydration station. With today's challenges of climate change and habitat loss, our winged friends need our help! Working from a simple template, we'll explore fun ideas for design and embellishment, then create functional garden splash pads for our favorite local fauna. This three hour workshop is open to Community Kiln students, past and present.

Ages 12+ Welcome



\$60



www.brickstack.org



Come and Join

COMMUNITY KILN
AT BRICK STACK ARTS CENTER

A PROGRAM OF **S M C**

***22 February, 2025
9AM***

Spring Registration

Classes start April 6th and run for 10 weeks long. Registration for Spring 2025 classes opens on **Saturday, February 22nd at 9AM.**

To read more on our policies and see more class information, visit our website at

www.brickstack.org



COMMUNITY KILN
AT BRICK STACK ARTS CENTER

A PROGRAM OF  S M O C

TALK TO US

communitykiln@smoc.org

508-309-4604

Kids Clay

Tuesday 4PM - 6PM

Students ages 9 -12 will learn to create one of a kind ceramics using basic handbuilding techniques. Tuition includes instruction, clay, glaze, underglazes, and firing. Class meets for 8 weeks.

Teen Clay

Thursday 4:15PM - 6:15PM

Teens will explore both wheelthrowing and handbuilding to develop their unique artistic styles. Advanced students coming into this class can work with the instructor to create projects to fit their skill level and challenge themselves. Tuition includes 25 lbs of clay, firing costs and glazing. Class meets for 8 weeks.

www.brickstack.org

COMMUNITY KILN
AT BRICK STACK ARTS CENTER

A PROGRAM OF **SMOC**

Fundraising for a special

RAKU FIRING



Who: In collaboration with Framingham State University and Framingham High School, Community Kiln is raising funds for a raku firing.

What: A raku firing is a type of alternative finishing for ceramics. Our fundraising goal is \$4,500 to ensure this event will be FREE to participants.

More details on participation to come.

How to Donate:

Donate to Community Kiln [directly here](#) with “Raku Firing” in the comments





Q&A



Have a question? Write
in to the newsletter to
have it answered.



@community_kiln

