



Community Kiln



What's New

BY NATALIE DAHL

And just like that registration for Winter 2026 classes is just about to begin. Get your laptops ready for November 22nd at 9AM when the portal will become active and all Winter 2026 classes will be available to register for. Need a winter pick me up? Try some clay! We have a great community of artists to spend those long, dark days with. Scroll through this article to see all of the amazing beginner friendly and advanced workshops that we are offering up until the end of 2025. We also have our amazing annual Holiday Fair coming up in December. It's always a brilliant compilation of our students and instructors' hard work over the year. We hope that you will join us for some clay fun before the end of 2025.

Inside:

Kiln Firings	pg. 2
Studio FAQs	pg. 3
Upcoming Events	pg. 4
Amazing Glazes	pg. 5
Got Ideas?	pg. 6
Staying Updated	pg. 6
Check out these Opportunities!	pg. 7-18

Kiln Firings

WHAT GOES ON BEHIND THE SCENES?

Modern kilns come in many shapes and sizes, can be front loading or top loading, and can be run by electric, gas or wood. Electric kilns have coils set into the kiln's inside walls that heat up and radiate heat which is absorbed by everything inside the kiln. The heat drives off the water present in the work altering the materials permanently into ceramic. Kilns are designed to be loaded from the bottom up, using kiln post and shelves to add additional layers into the kiln. Once we have enough pieces to fill a kiln, a new kiln is loaded and fired.

FIRING BISQUEWARE

This process starts with letting clay projects dry completely, reaching a state called "bone dry." Even mildly damp ware poses a risk of cracking or exploding when fired and damaging other ware. In our bisque kilns, wares are stacked together to maximize efficiency and keep projects moving. Shelves are not staggered because the extra air flow is not needed in a bisque firing. A collection of work similar in height is placed on the layer together. When it is filled, posts of the same height support the shelves on top and the next layer is ready to be stacked. Objects such as plates, wide items or tall items take longer because of the large footprint they require to be fired.



This image shows a shelf of work ready to be bisque fired; It is bone dry and fragile.

FIRING GLAZEWARE

Work is typically fired twice. Bisqueware typically has an application of glaze and is placed in the kiln again for a glaze firing. Glaze is a glass that protects the work and depending on the glaze, makes the object food safe. In glaze firings, works can not be stacked or touch each other; Otherwise, the glaze will cause the wares to fuse together. Stilts and small supports, may be used to prevent the melting glaze from fusing the work to the shelf. Half shelves are staggered within the kiln to create airflow. When loading a kiln a few factors are taken into consideration- such as which objects have been waiting for a while and if there are enough pieces of that same height to fill a shelf. Like the bisque firing, the kiln is fired to maturity and then allowed to cool. Firing temperature is measured in "cones." At Community Kiln we fire our kilns to Cone 6. All clay and glazes are formulated to work together with each other to produce stoneware ceramics, maturing at Cone 6 or 2232 degrees Fahrenheit.

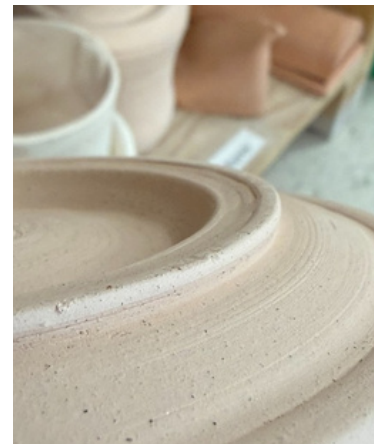
To wax, or not to wax?

THAT IS THE QUESTION

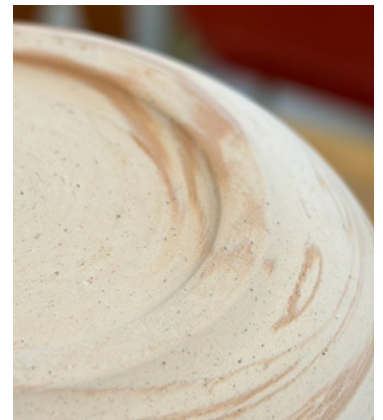
Why wax? Waxing helps the glaze repel off of your bisqueware. When dipping your pieces, wiping the bottoms will be much easier. Wax burns in the kiln around 500 degrees Fahrenheit, so it will not protect your piece from unwanted glaze runs or drips.

Elevated foot rings can be beautifully decorative, enhancing the profile of a pot and bringing a level of sophistication to the form. Typically, we ask students to wipe the complete bottom of their wares, but when is it acceptable to glaze inside of the foot ring on the bottom of the pot?

First, you will have to test if the foot ring is at least $\frac{1}{4}$ inch deep. Place a flat object like a pencil or a ruler across your foot ring to visualize the depth. Anything shorter than $\frac{1}{4}$ inch should be waxed and/or wiped completely. If you have a greater clearance than $\frac{1}{4}$ inch, wax into the foot ring at least $\frac{1}{4}$ inch and glaze the rest of your piece accordingly.



This pot has a foot ring of at least $\frac{1}{4}$ inches. The inside of this ring can be glazed!



This pot does not have foot ring of at least $\frac{1}{4}$ inches. No glaze can be applied on the bottom.

Sort your Work!

UP HIGH, DOWN LOW



When you're all done glazing your pieces, where do they go to be fired? First, fill out a glaze tag indicating what glazes you put on your pieces and leave it underneath or inside of your pot. Second, head back into the kiln room. You'll see three shelves on the wall across from the kilns - Each is labeled with a different clay type: Brown, Speckled, White and Tan. Find the shelf that corresponds to what type of clay you are using. If you're using a mixed reclaim, place your objects on the speckled or brown shelves. Place your piece on the proper shelf in the kiln room AND sort your items by height. Short items are placed on the lowest shelves, with the tallest items on the top shelves. **Remember to push back your work to accommodate for everyone's pieces and place your glaze tag in or around your piece!** Items will be ready in 2-3 weeks and placed on the baker's carts by the wheels (excluding large or flat pieces).

Upcoming Events

Clay Night Out!

December 6th, 6-9PM

Want to make a circular shaped friend? Join instructor Meghan Albee in making round ceramic frogs! You will learn handbuilding skills like how to make a pinch pot, how to attach clay together and how to sculpt clay into your desired shapes. \$50 registration fee covers all clay, glazing and firing. All levels of clay knowledge welcome! Ages 16 and up.

More information and registration at www.brickstack.org



Call for Artists!

Applications due November 15th

Be a part of Community Kiln's 2025 Holiday Market. The market will be Saturday, December 13th from 11-4PM at 7 Bishop Street, Framingham, MA.

Tables are \$35 a piece and come with a 6x3 table and chairs. Vendors keep 100% of their proceeds from the fair.

For more information and more detail about the market, follow the [link here](#). Applications are due November 15th and acceptances will be sent out by Thursday, November 20th.



Holiday Ornaments

November 22nd, 4-6PM

Grown up and children pairs can spend some quality time together making one of a kind ornaments. As a duo, you can expect to make up to 5, medium ornaments per person. Finished projects make great gifts, table decorations or tree adornments for whatever holiday you celebrate! Tuition includes clay, underglaze and all firing costs.

For more information and registration visit www.brickstack.org



Gold Leaf Workshop

**Friday, December 12th
6-8PM**



Discover the magic of gilding in this hands-on workshop where you'll learn how to apply luminous sheets of gold leaf to embellish your artwork. Each participant will receive a **gold leaf kit** (included in your registration).

More information and registration at www.brickstack.org

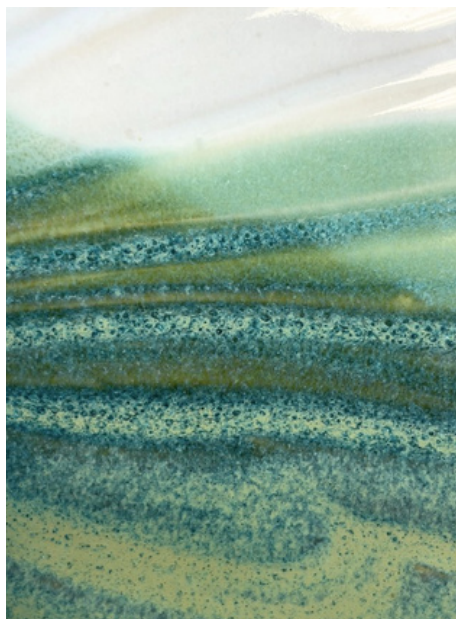
Amazing Glazes



Stunning combinations using Community Kiln glazes!



Sanora on Buff Clay
By Michelle



White Liner/Rutile
By Kiersten



Marigold/Iron Breaking
By Nancy



Pine and Aqua/Black Beauty
By Jess



Marigold/Eggshell Matte
By Georgia



Marigold, Aqua, Rutile and Ruby Red
By Mary

Got Ideas?

Do you have ideas for upcoming workshops and classes? We want to know! As we look forward to planning our programming for the 2026 year, we're looking for student feedback to help guide our offerings. Your input is so important to us and helps us gauge what type of workshops and classes we offer as a studio.

We're looking for feedback on our

- Class times and days of the weeks
- Classes offered
- Advanced workshops
- Beginning workshops
- Workshop age requirements

So, please! If you have any thoughts on what you would like to see in the upcoming year, submit your thoughts through our "ask the newsletter" link by clicking the link to the right of the article OR by scanning the QR code.



Let us Know!

Staying Updated

Please check your student account to pay any outstanding fees from Summer 2025

Follow us!



@CommunityKilnCeramics



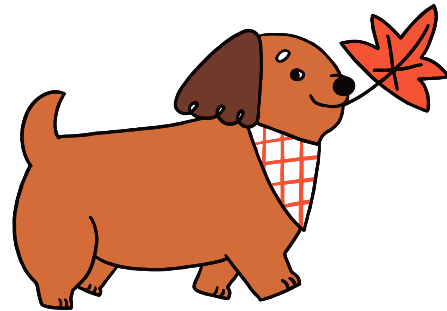
@community_kiln



We have Community Kiln merchandise and ceramic tools for sale in the office!

Please see Natalie if you would like to purchase anything

OPEN STUDIO



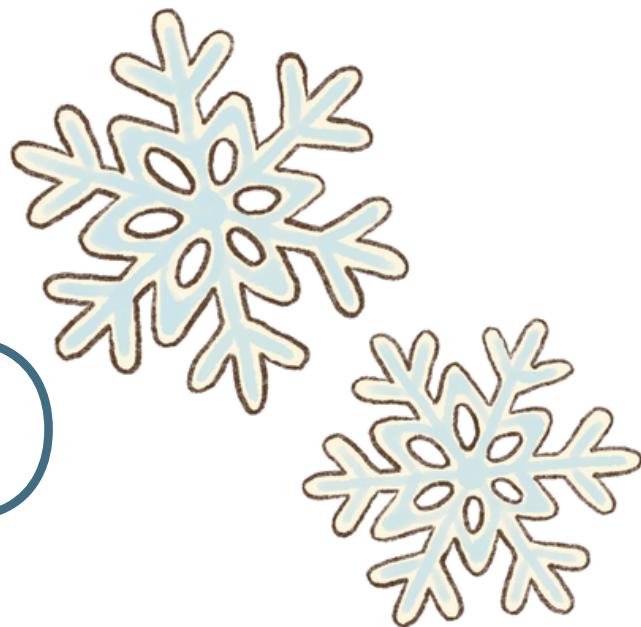
NOVEMBER

2025

SUN	MON	TUE	WED	THU	FRI	SAT
						1 Open Studio 10:00-4:00PM
2 Open Studio 10:00-4:00PM	3 Open Studio 1:30-4:30PM	4	5 Open Studio 2:00-5:00PM	6 Open Studio 1:00-4:00PM	7 Open Studio 12:30-3:30PM	8 Open Studio 10:00-4:00PM
9 No Veteran's Day	10 Open Studios	11	12 Open Studio 2:00-5:00PM	13 Open Studio 1:00-4:00PM	14 Open Studio 12:30-3:30PM	15 Open Studio 10:00-4:00PM
16 Open Studio 10:00-4:00PM	17 Open Studio 1:30-4:30PM	18	19 Open Studio 2:00-5:00PM	20 Open Studio 1:00-4:00PM	21 Open Studio 12:30-3:30PM	22 Open Studio 10:00-4:00PM
23 Open Studio 10:00-4:00PM	24 Open Studio 1:30-4:30PM	25	26	27	28	29
30 Open Studio 10:00-4:00PM						

No Open Studios Thanksgiving Break

OPEN STUDIO



DECEMBER

2025

SUN	MON	TUE	WED	THU	FRI	SAT
	1 Open Studio 1:30-4:30PM	2	3 Open Studio 2:00-5:00PM	4 Open Studio 1:00-4:00PM	5 Open Studio 12:30-3:30PM	6 Open Studio 10:00-4:00PM
7 Open Studio 10:00-4:00PM	8 Open Studio 1:30-4:30PM	9	10 Open Studio 2:00-5:00PM	11 Open Studio 1:00-4:00PM	12 Open Studio 12:30-3:30PM	13 Holiday Fair 11-4PM
14 Open Studio 10:00-4:00PM	15 Open Studio 1:30-4:30PM	16	17 Open Studio 2:00-5:00PM	18 Open Studio 1:00-4:00PM	19 Open Studio 12:30-3:30PM	20 Open Studio 10:00-4:00PM
21 Open Studio 10:00-4:00PM	22 Open Studio 9:30-12:30PM	23 PICK UP ONLY 12-4PM	24 No Sem	25 Open ester	26 Studios Vacation	27
28	29	30	31			

**CALL FOR
VENDORS!**



COMMUNITY KILN
AT BRICK STACK ARTS CENTER

A PROGRAM OF **SMOC**

2025 HOLIDAY MARKET

DECEMBER 13TH, 11-4PM

AT SMOC:
7 BISHOP STREET
FRAMINGHAM, MA



\$35 ENTRY!

VENDORS KEEP 100% OF THEIR
PROFITS. REGISTRATION IS \$35 FOR A
6X8 SPOT, TABLE AND TWO CHAIRS.

CALL FOR
VENDORS!



COMMUNITY KILN
AT BRICK STACK ARTS CENTER

A PROGRAM OF **S M O C**

2025 HOLIDAY MARKET

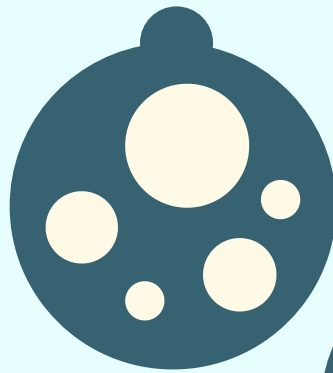
FOLLOW
THE QR
CODE TO
REGISTER



**REGISTER BY
NOVEMBER 15TH**

VENDORS KEEP 100% OF THEIR
PROFITS. REGISTRATION IS \$35 FOR A
6X8 SPOT, TABLE AND TWO CHAIRS.

MONETARY OR ARTISTIC
DONATIONS ARE WELCOMED!



HOLIDAY ORNAMENT WORKSHOP

**Saturday, November
22nd, 4-6PM**

Grown up and children pairs can spend some quality time together making one of a kind ornaments. As a duo, you can expect to make up to 5, medium ornaments per person. Finished projects make great gifts, table decorations or tree adornments for whatever holiday you celebrate! Tuition includes clay, underglaze and all firing costs. Add an additional youth student for \$25 by emailing communitykiln@smoc.org

\$50
PER GROUP

**YOUTH
AGES 4-18**

**GROWN UPS
AGES 18+**

www.brickstack.org

WINTER REGISTRATION

*Interested in learning
Ceramics?*

*Come take a class at
Community Kiln!*

Classes start January 2nd and
run for 10 weeks long.

Registration for Winter 2025
classes opens on **Saturday,
November 22nd at 9AM.**

To read more on our policies and
see more class information, visit
our website at

www.brickstack.org

TALK TO US

communitykiln@smoc.org
508-309-4604

COMMUNITY KILN
AT BRICK STACK ARTS CENTER

A PROGRAM OF **SMOC**

WINTER REGISTRATION

All Level Wheelthrowing

Sunday 6PM - 9PM

Tuesday 10AM - 1PM

Tuesday 6:30PM - 9:30PM

Thursday 10AM - 1PM

Friday 9AM - 12PM

Intermediate Wheelthrowing

Monday 6:30PM - 9:30PM

Thursday 6:30PM - 9:30PM

Sculptural Handbuilding

Monday 10AM - 1PM

Handbuilding

Wednesday 9:30AM - 1:30PM

Wednesday 6:30PM - 9:30PM

TALK TO US

communitykiln@smoc.org

508-309-4604

COMMUNITY KILN
AT BRICK STACK ARTS CENTER

A PROGRAM OF **SMOC**

WINTER REGISTRATION

Kids Clay

Tuesday 4PM - 6PM

Through hands-on instruction and fun projects we will explore slab, coil and pinching methods used to express your ideas in clay. Surface decoration and colorful underglazes will be used to make these unique, functional and decorative pieces your own! Each session meets for 8 weeks. Ages 9-12.

Teen Clay

Thursday 4:15PM - 6:15PM

Teens ages 13-18 will explore methods and strategies to create their own, unique ceramic pieces. With a focus on handbuilding techniques, students will learn to make a variety of functional items such as bowls, mugs and dishes, as well as decorative objects. Class meets for 8 weeks.

TALK TO US

communitykiln@smoc.org
508-309-4604

COMMUNITY KILN
AT BRICK STACK ARTS CENTER

A PROGRAM OF **S M C**

\$50
PER PERSON

COMMUNITY KILN PRESENTS



CLAY NIGHT OUT!

Frog Friends

DECEMBER 6TH, 2025
6-9PM

Want to make a circular shaped friend? Join instructor Meghan Albee in making round ceramic frogs! You will learn handbuilding skills like how to make a pinch pot, how to attach clay together and how to sculpt clay into your desired shapes. \$50 registration fee covers all clay, glazing and firing. All levels of clay knowledge welcome! Ages 16 and up

**FOR MORE INFORMATION AND
REGISTRATION VISIT
WWW.BRICKSTACK.ORG**



COMMUNITY KILN
AT BRICK STACK ARTS CENTER
A PROGRAM OF **S M C**



Gold Leaf workshop

Friday, December 12th, 6-8PM

\$65/per person

Discover the magic of gilding in this hands-on workshop where you'll learn how to apply luminous sheets of gold leaf to embellish your artwork. Each participant will receive a **gold leaf kit** (included in your registration) with plenty of materials to use during the class and more to take home to continue experimenting. No prior experience is necessary.

Ages 18+



For more information and registration visit
www.brickstack.org





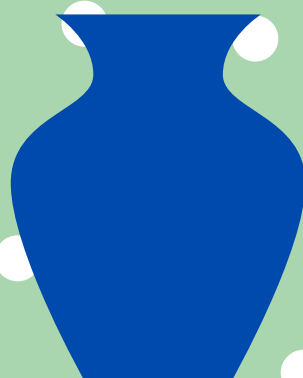
COMMUNITY KILN
AT BRICK STACK ARTS CENTER

A PROGRAM OF **SMOC**

HOLIDAY MARKET

DECEMBER 13TH, 11-4PM

AT SMOC:
7 BISHOP STREET
FRAMINGHAM, MA

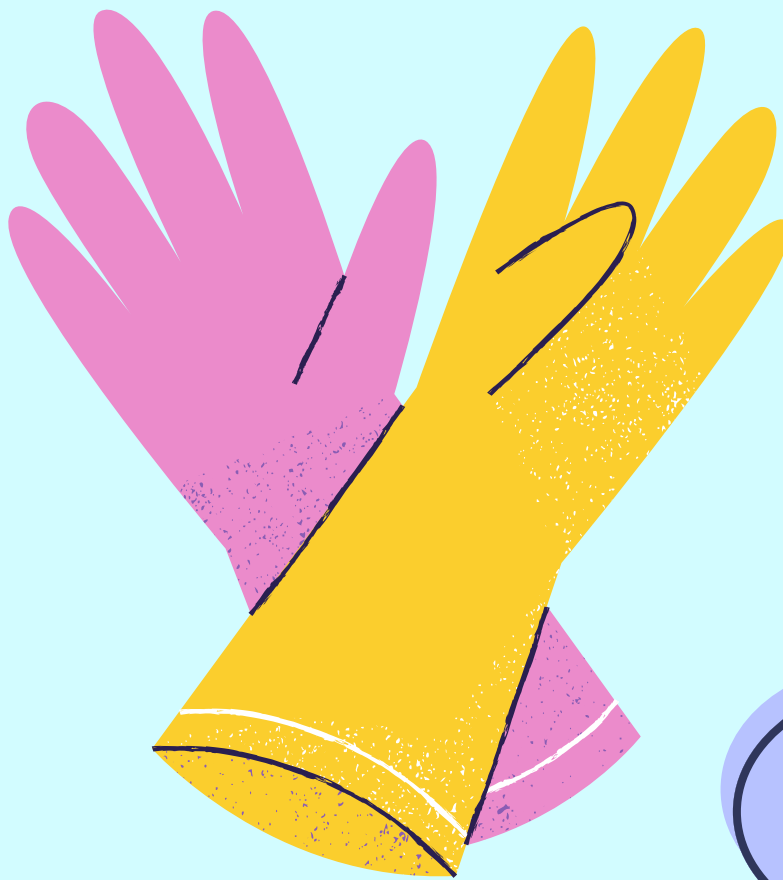


FREE ENTRY

CERAMIC VENDORS, RAFFLES,
MYSTERY BOXES AND MORE!

CASH RECOMMENDED,
BUT NOT REQUIRED

WWW.BRICKSTACK.ORG



**December
22nd
12:30- 3:30PM**

STUDIO CLEANING DAY

Come and help us tidy up our space!

**To say "Thank You" to all of our cleaning day volunteers,
join us from 9:30-12:30PM on December 22nd for a free open
studio.**

**If you can not make it help out when you can and clean out
your cubby. Make space for new items, wipe down any dirty
surfaces or reorganize anything disorderly in the studio.**

We appreciate ALL of your help.