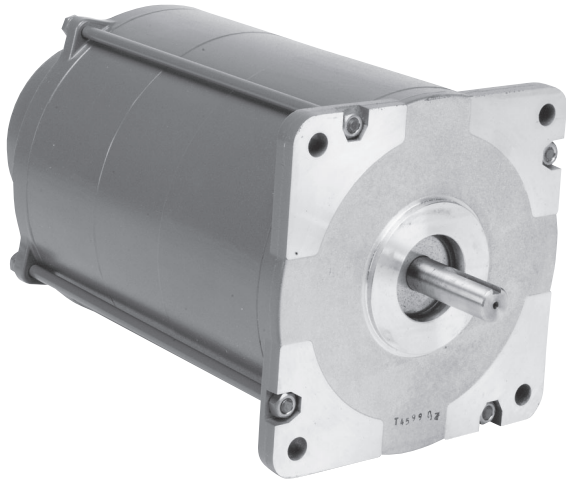


Hazardous Duty Motors

(NEMA Size 42 & 66)



- Motor torque up to 1500 oz-in (1059 N-cm)
- 72 RPM @ 60 Hz - 60 RPM @ 50 Hz
- 120 and 240 volt AC versions
- UL Listed and CE certified versions
- UL Listed versions - Class 1 Group D requirements
- UL Listed versions have conduit connection
- CE certified versions – EEx d IIC T5
- CE certified versions have integral 10 ft (3 M) cable



X Meets UL Standards (conduit connection)
 XCE Meets CE Standards (includes 10' (3m) cable)



Torque in oz-in, and Last # indicates voltage
 0 120 volts
 2 240 volts
 X250=250 oz-in, 120 V
 X1102=1100 oz-in, 240 V



UL Certified Motors (Prefix "X")

Motors having an "X" prefix (X250, etc.) are designed to meet UL Standard 674 for motors operating in Class 1 Group D hazardous locations.

Class 1 is defined as locations in which gases or vapors are, or may be, present in the air in quantities sufficient to produce explosions or ignitable mixtures. Group D includes atmospheres containing gasoline, petroleum, naphtha, alcohol, acetone, lacquer solvent vapors or natural gas.



CE Certified Motors (Prefix "XCE")

Motors having a "XCE" prefix are designed to meet requirements in hazardous locations as defined by CE directive 94/9/EC. They have a flameproof enclosure, for use in surface industries exposed to gasses including hydrogen and acetylene. The maximum surface temperature is 100°C.

Hazardous Duty Motors (Continued)

120 Volt, 60 Hz, Single Phase, 72 RPM

								Phase Shifting				
* Type Number		Torque (min)		# Load Inertia		amps	Wiring Diagram	Resistor			Capacitor (330VAC)	
UL	CE	oz-in	N-cm	lb-in ²	kg-cm			Kit Number	ohms	watts	Kit Number	μF
X250	XCE250	250	177	3	8.8	0.6	RC	201052-013	150	50	201053-010	6.5
X700	XCE700	700	494	10	30	1.1	RC	201052-027	150	100	201053-032	12.5
X1100	XCE1100	1,100	777	9	26	3	RC	201052-025	100	160	201053-026	17.5
X1500	XCE1500	1,500	1,059	12	35	3	RC	201052-020	55	375	201053-014	30

240 Volt, 60 Hz, Single Phase, 72 RPM

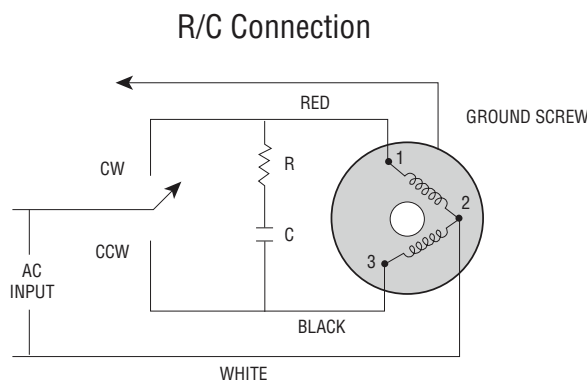
								Phase Shifting				
* Type Number		Torque (min)		# Load Inertia		amps	Wiring Diagram	Resistor			Capacitor (660VAC)	
UL	CE	oz-in	N-cm	lb-in ²	kg-cm			Kit Number	ohms	watts	Kit Number	μF
X252	XCE252	250	177	3	8.8	0.4	RC	201052-015	500	50	201053-012	1.75
-----	XCE702	700	494	10	30	0.6	RC	201052-028	500	100	201053-030	3
X1102	XCE1102	1,100	777	9	26	1.5	RC	201052-026	400	160	201053-028	4
X1502	XCE1502	1,500	1,059	12	35	1.5	RC	201052-018	250	200	201053-016	8

240 Volt, 50 Hz, Single Phase, 60 RPM

								Phase Shifting				
* Type Number		Torque (min)		# Load Inertia		amps	Wiring Diagram	Resistor			Capacitor (660VAC)	
UL	CE	oz-in	N-cm	lb-in ²	kg-cm			Kit Number	ohms	watts	Kit Number	μF
X252	XCE252	250	177	3	8.8	0.4	RC	201052-015	500	50	201053-012	1.75
-----	XCE702	700	494	10	30	0.6	RC	201052-028	500	100	201053-028	4
X1102	XCE1102	1,100	777	9	26	1.5	RC	201052-026	400	160	201053-029	6
X1502	XCE1502	1,500	1,059	12	35	1.5	RC	201052-018	250	200	201053-019	9

This is the maximum rigidly attached load inertia the motor will reliably start. If the load is attached to the motor with a coupling that has a 5° flex, the motor can start loads up to seven times listed.

Connection Diagram

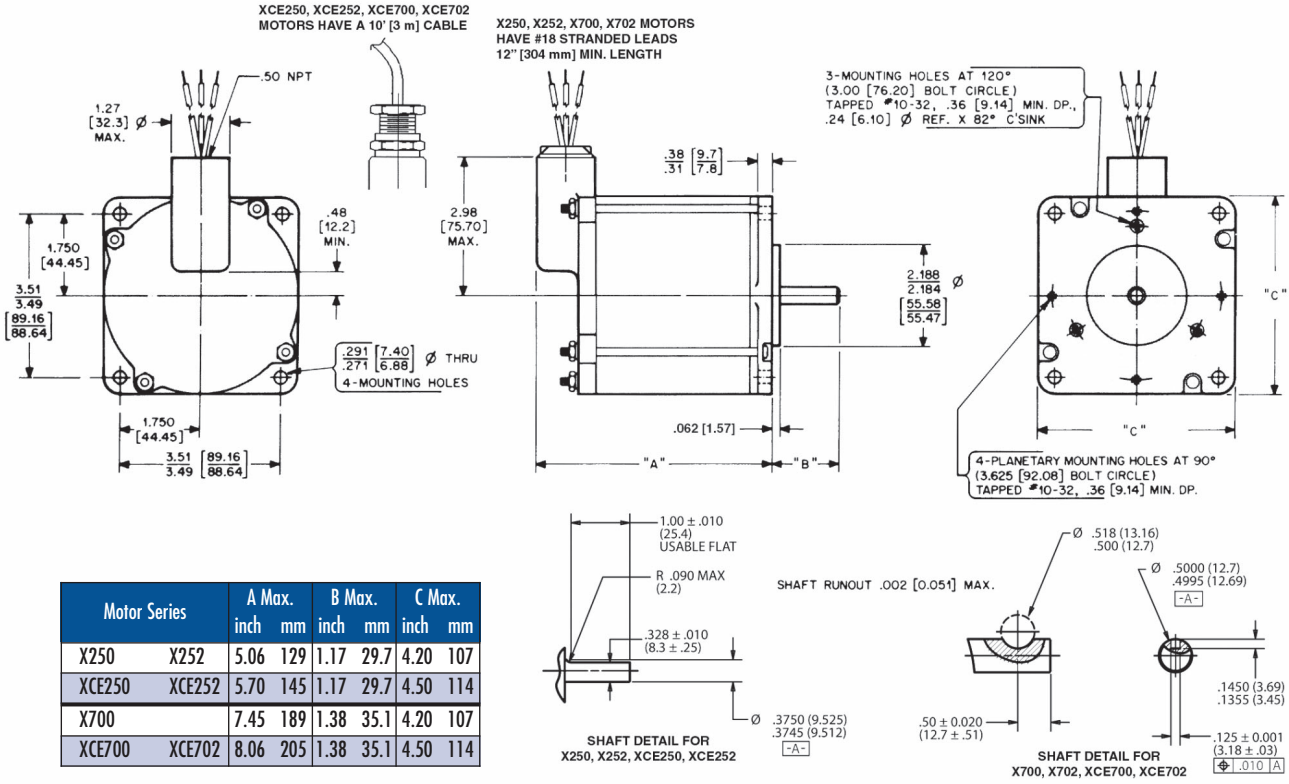


NOTE:
1 - Direction or rotation is determined when viewed from end opposite mounting surface.

Single-Phase Operation

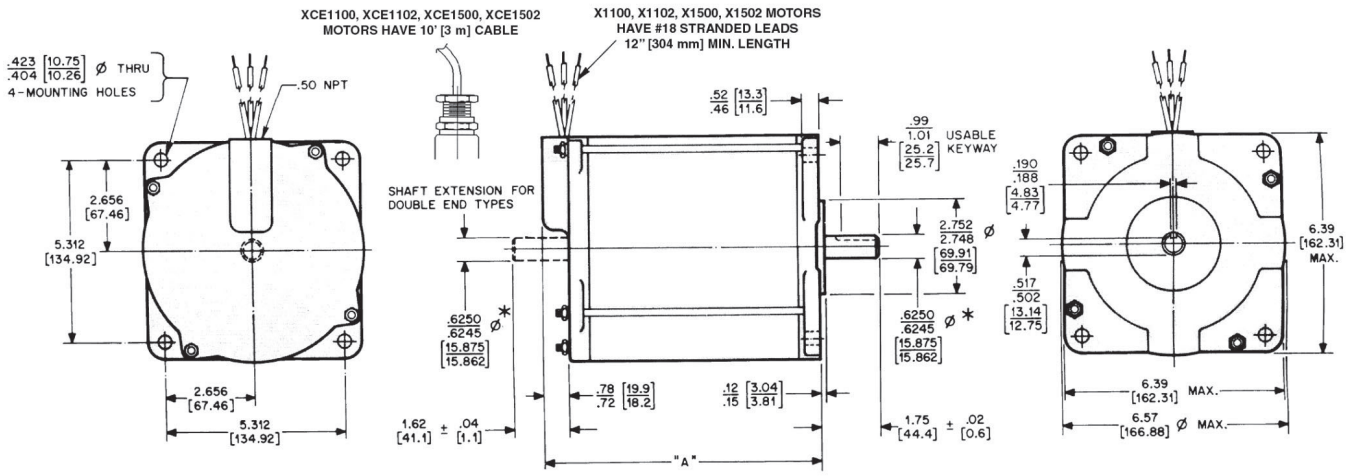
Hazardous Duty Motor Dimensions

X250, X252, X700, X2CE250, XCE252, XCE700, XCE702



Dimensions are shown in inches (mm)

X1100, X1102, X1500, X1502, XCE1100, XCE1102, XCE1500, XCE1502



Motor Series	A Max. inch	A Max. mm
X1100 X1102	7.10	180
XCE1100 XCE1102	7.60	193
X1500 X1502	8.41	214
XCE1500 XCE1502	8.91	226

Dimensions are shown in inches (mm)