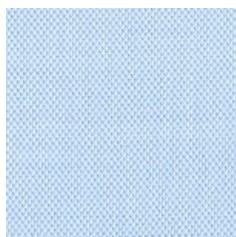


Fabric Swatches

Disclosure: Images represent approximately 1.5" X 1.5" of the actual swatch. They may not show true to size or color depending on your monitor.



RX01
White
200-2ply Cotton Broadcloth



RX06
Lt Blue
200-2ply Royal Oxford



RX10
White
200-2ply Cotton Herringbone



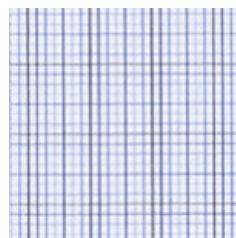
RX102
Lt. Blue Glen Plaid
200-2ply Cotton Broadcloth



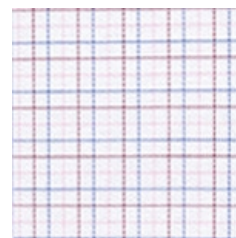
RX104
Pink Check
200-2ply Cotton Broadcloth



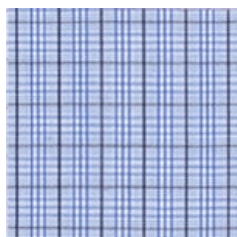
RX105
Lavender Check
200-2ply Cotton Broadcloth



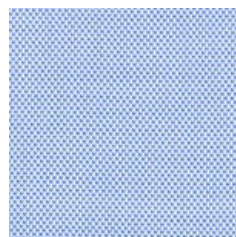
RX107
Navy/Blue Check
200-2ply Cotton Broadcloth



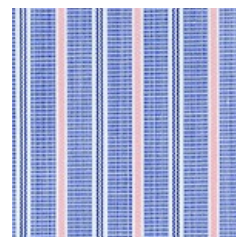
RX108
Blue/Pink/Red Check
200-2ply Cotton Twill



RX109
Navy/Blue Plaid
200-2ply Cotton Broadcloth



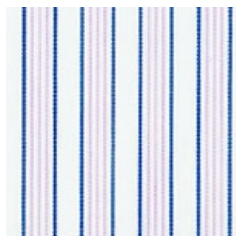
RX25
Blue
200-2ply Royal Oxford



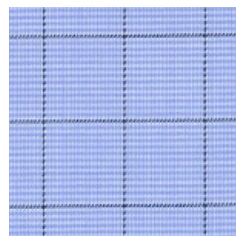
RX33
Pink/Blue Stripe
200-2ply Cotton Broadcloth



RX35
Multi Blue Stripe
200-2ply Cotton Twill



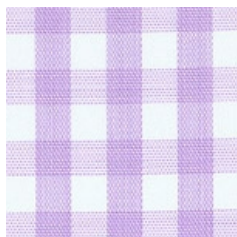
RX37
Navy/Pink Stripe
200-2ply Cotton Broadcloth



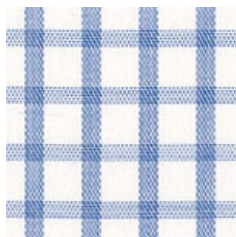
RX40
Black Check on Blue
200-2ply Cotton Broadcloth



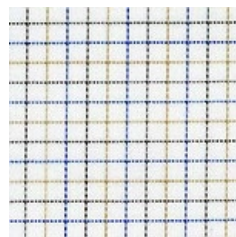
RX41
Blue Stripe
200-2ply Cotton Broadcloth



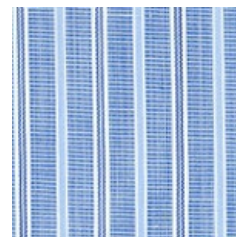
RX42
Lavender Check
200-2ply Cotton Twill



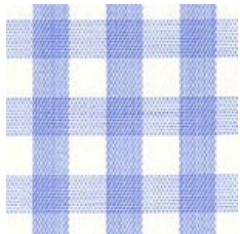
RX45
Blue Check
200-2ply Cotton Twill



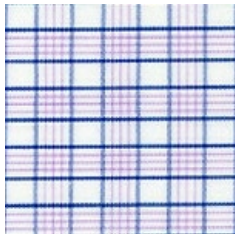
RX46
Blue Multi Check
200-2ply Cotton Twill



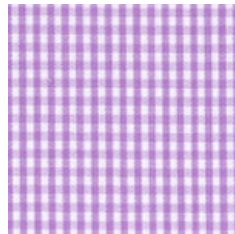
RX48
Blue Stripe
200-2ply Cotton Broadcloth



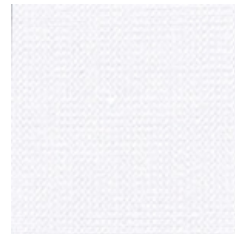
RX50
Lt. Blue Check
200-2ply Cotton Broadcloth



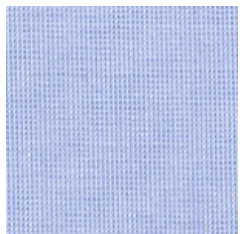
RX62
Navy/Purple Check
200-2ply Cotton Broadcloth



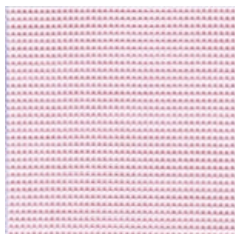
RX69
Lavender Mini Check
200-2ply Cotton Broadcloth



RX73
White
200-2ply Cotton Pique



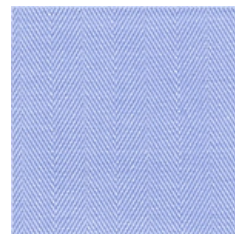
RX74
Blue
200-2ply Cotton Pique



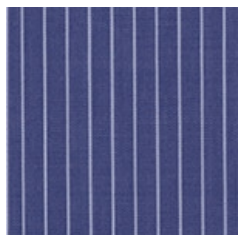
RX78
Hot Pink
200-2ply Cotton Dobby



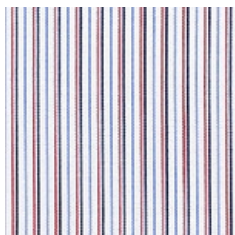
RX79
Grey
200-2ply Cotton Dobby



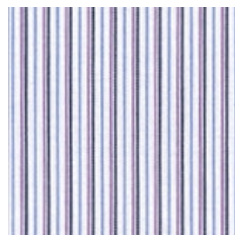
RX81
Blue
200-2ply Cotton Herringbone



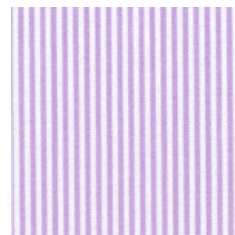
RX91
White Stripe on Blue
200-2ply Cotton Broadcloth



RX94
Blue/Red Stripe
200-2ply Cotton Broadcloth



RX95
Blue/Purple Stripe
200-2ply Cotton Broadcloth



RX97
Lilac Stripe
200-2ply Cotton Broadcloth



RX99
Black Stripe
200-2ply Cotton Broadcloth