

FERNWAY BUILDERS

EXCEPTIONAL DESIGNER HOMES

DESIGN+BUILD
STUDIO





3 **MISSION STATEMENT**

What do we really stand for

4 **APPROACH**

What sets us apart

5 **DESIGN**

Our design philosophy

6 **BUILD**

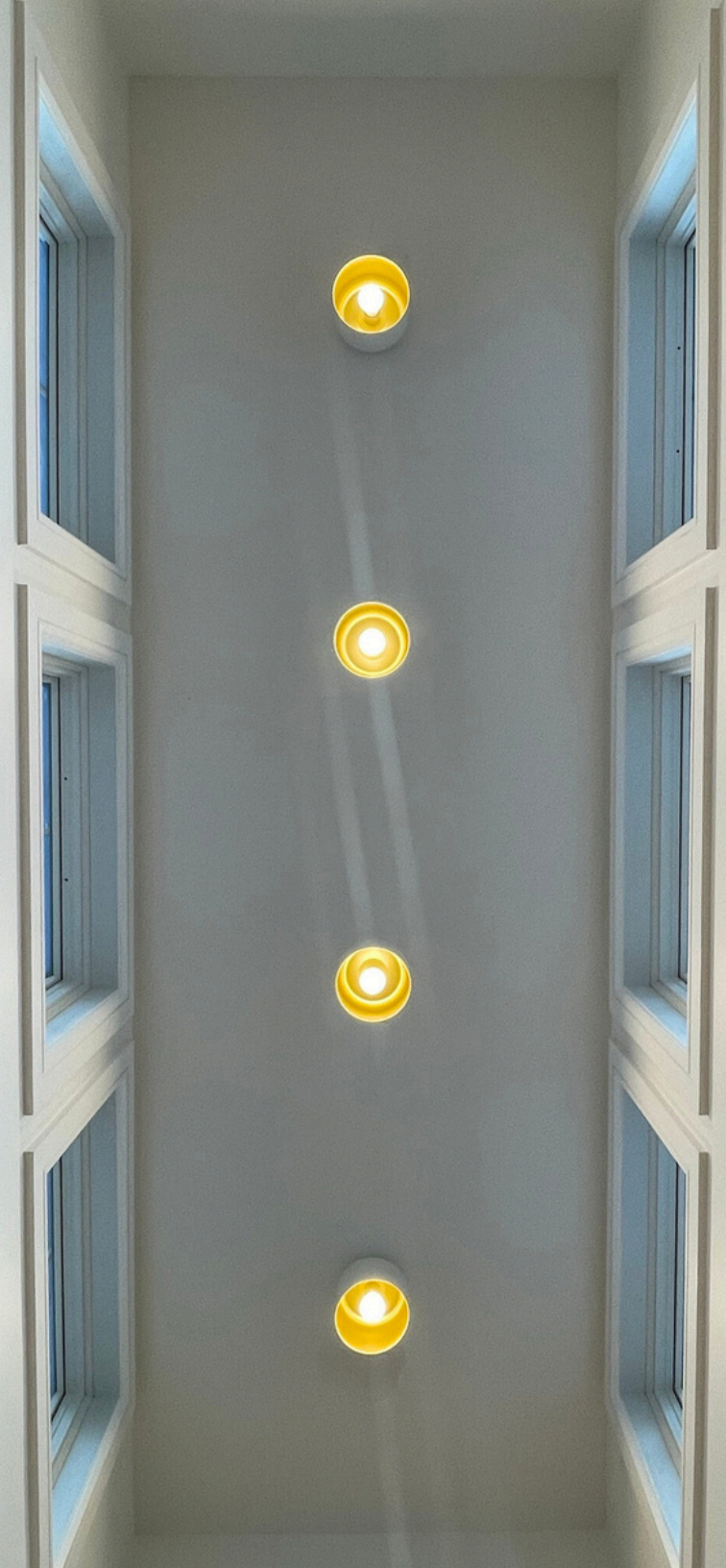
Our build philosophy

8 **GALLERY**

Some of Fernway's finest works on display

20 **CONTACT US**

Get in touch



MISSION STATEMENT

Our mission is to build exceptional designer homes.

We are committed to demonstrating high-quality craftsmanship using the finest of materials, thoughtful design and building science.

Our goal is to provide clients with a stress-free experience in making their dream home a reality.



*What sets us apart
is our ability to stitch together:*

- *thoughtful design*
- *building science*
- *management expertise and*
- *relationships*

*to deliver a truly **exceptional designer home!***

APPROACH

DESIGN

The focus here is on the client - where we understand and come up with a design that works for them - for their comfort, lifestyle and entertainment.

We apply our thorough knowledge of exterior and interior design styles. We then look at various factors like site location, topography, orientation, neighborhood, views, traffic patterns etc., before we work on plans, layouts, elevations, livable features, materials, colors and finishes.



DESIGN

BUILD (Construction)

Always built from the ground up, a Fernway Home has pro-grade basements built out of pour over concrete rather than CMU blocks or Superior Wall.

Foundation walls that are more than 9' high, interior and exterior french drains, a slab that is insulated from below and an exterior that has a rubber membrane.

Framing and Insulation that exceed code requirements, subfloor that is water resistant, less squeaky and more quiet, house wrap with WRB (weather resistant barrier).

There are always more windows than usual that are flashed and installed with manufacturer standards.

Hardie siding, metal roof or premium shingles that have longer life spans and lasting beauty.

Branded shower valves and diverters and drain flanges and all internal components (that are hidden behind the tile or drywall).

BUILD



BUILD (Finishes)

Our kitchens and wet bars are grand with luxury appliances, well designed cabinets with high-end drawer pulls and door knobs, quartz countertops.

For Interiors, we have designer tiles, vanities, shower systems, faucets and other fixtures in appropriately sized bathrooms.

We always have branded lighting fixtures that are styled to the room they will be put in.

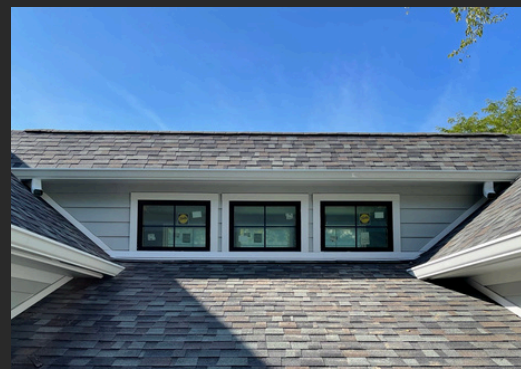
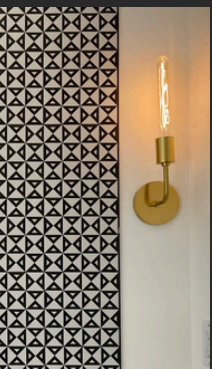
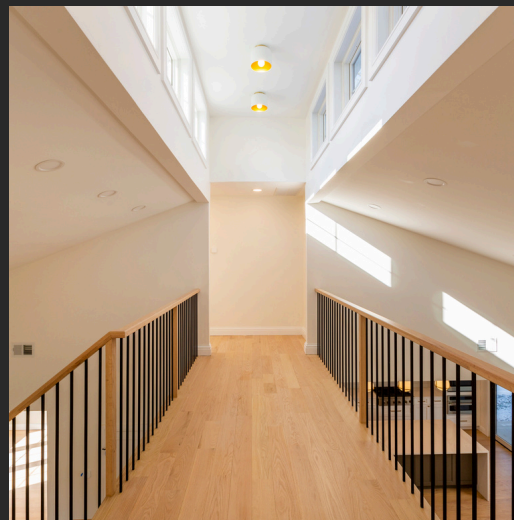
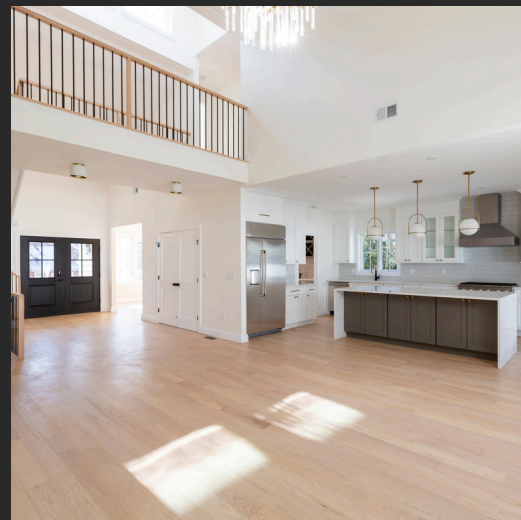
California style closets in master bedroom as well as all other bedrooms, pantry, mud room, laundry etc.

There is almost always a covered porch that has a provision for a fireplace, adequate lighting and fan to enjoy the great outdoors.

Landscaping and hardscaping done throughout to make it a complete move-in ready home.

BUILD





GALLERY



Drone pic of 44 Park Dr. Metal and Shingle roof combo with paved driveway, deck with spiral staircase, outdoor patio with fireplace

GALLERY



GALLERY

Covered porch with a deck above. Stamped concrete with wood grain look. Walnut colored ceiling panels.



View from family room. Kitchen with large island and SS appliances, floor with hardwood flooring in natural stain, bridge with windows.

GALLERY



GALLERY

Master bathroom with large vanity from Signature Hardware and Kohler faucets. Gold wall sconces from CB2, countertops from Silestone.



An open kitchen in white and gold. Appliances from Thermador, countertops from Cambria, cabinets from St. Martin, custom hood with walnut trim

GALLERY



An optimal use of space for a Jack & Jill. Double vanity with drawers, large shower area and accented tiles.

GALLERY



Spiral staircase made with powder coated aluminum leading to a Trex deck above. Outdoor patio with natural gas fireplace in concrete.

GALLERY



Front elevation of 2 Squier Ct. A gorgeous home with a covered backyard porch, a grand stairwell overlooking a golf course, island fireplace separating the family room from the kitchen.

GALLERY



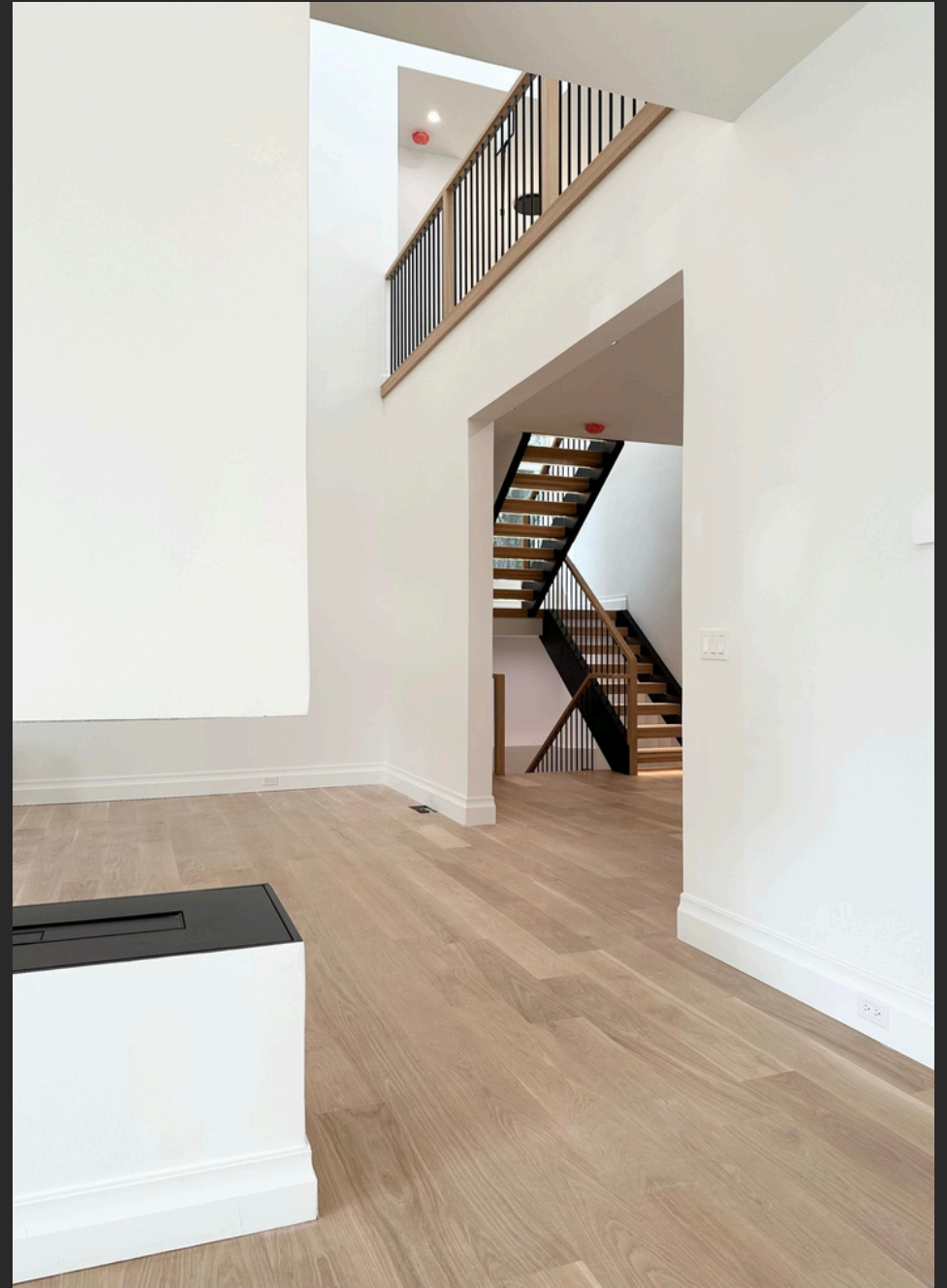
Second floor at 2 Squier Ct with a staircase overlooking a golf course with butterfly pendant lighting and plenty of windows in the attic.

GALLERY



A large U shaped kitchen at 2 Squier Ct with an oversized quartz island, Thermador appliances, a dual sided wet bar separating the dining room.

GALLERY



GALLERY

Modern Minimalism. Motion illuminated staircase in white oak complements this white and black home with an island fireplace. Clean lines but modern in every way.



421 Sylvan Pl at dusk. Hardie siding in Iron Gray along with Nichiha siding as an accent

GALLERY



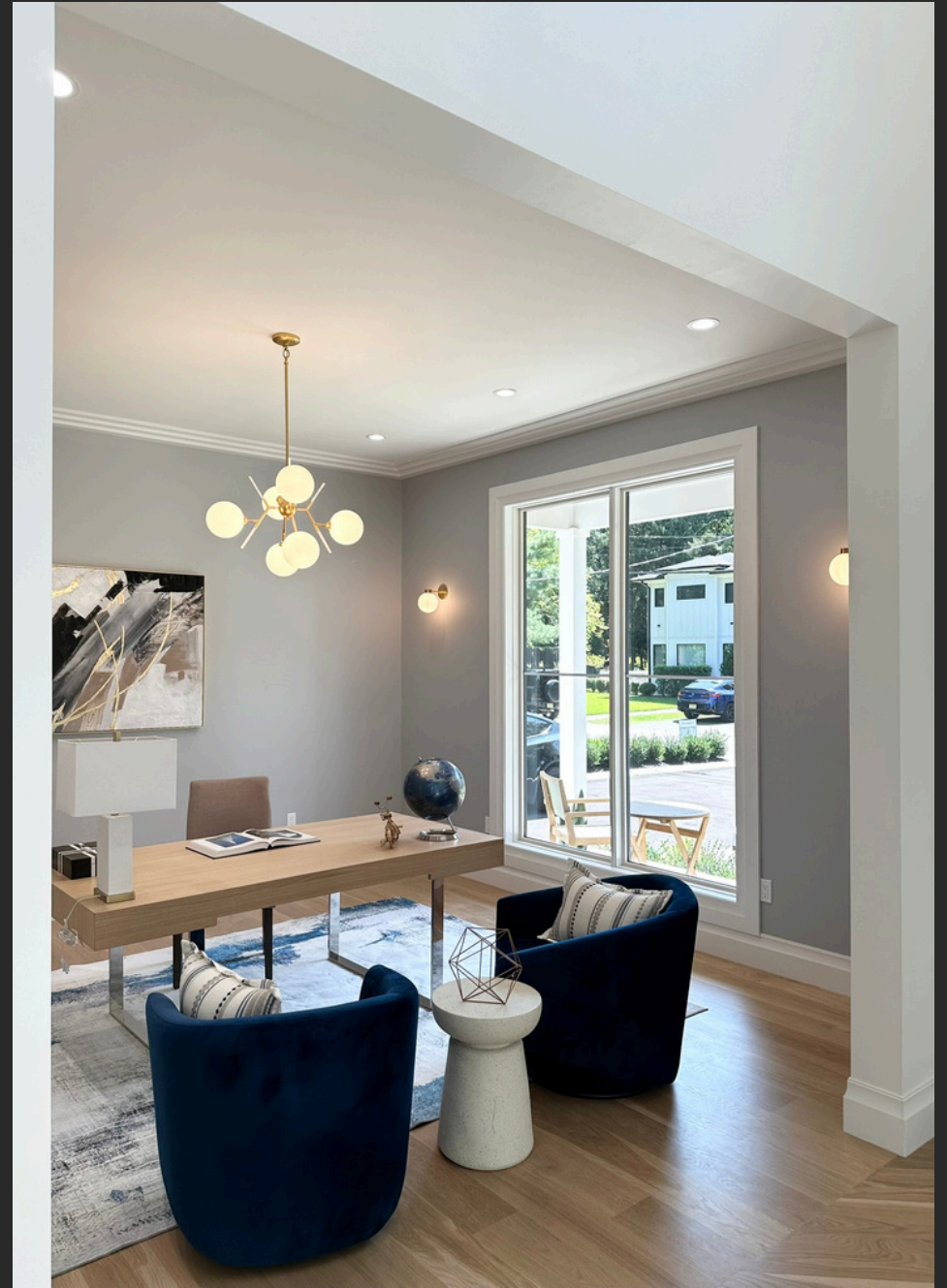
Master bathroom at 421 Sylvan Pl. Vanity is from Kohler | Shea McGee collection. Lighting from Visual Comfort & Lighting.

GALLERY



Master bathroom at 421 Sylvan Pl. Vanity is from Kohler | Shea McGee collection. Lighting from Visual Comfort & Lighting.

GALLERY



Entry foyer and living room at 417 Sylvan Pl.

GALLERY



Family room and kitchen at 417 Sylvan Pl.

GALLERY



WEB & SOCIAL

Web: www.fernwaybuilders.com

Instagram: [@fernwaybuilders](https://www.instagram.com/fernwaybuilders)

Facebook: www.facebook.com/fernwaybuilders

LinkedIn: www.linkedin.com/company/fernwaybuilders

Pinterest: www.pinterest.com/fernwaybuilders

Houzz: www.houzz.com/pro/fernwaybuilders

Twitter: [@fernwaybuilders](https://twitter.com/fernwaybuilders)

Medium: [@fernwaybuilders](https://medium.com/@fernwaybuilders)

EMAIL & PHONE

info@fernwaybuilders.com / 551 358 5521

CONTACT US