

GREATER NORTHWEST PORTLAND DEVELOPMENT MAP

NW 28TH AND THURMAN

A hearing before the Design Commission has been scheduled April 20 on a proposed remodeling of the former Crackerjacks Pub and addition of a rooftop deck at 2788 NW Thurman St. City staff's approval of the plan has been appealed by 28 neighbors, who object to potential noise and other disruptions.



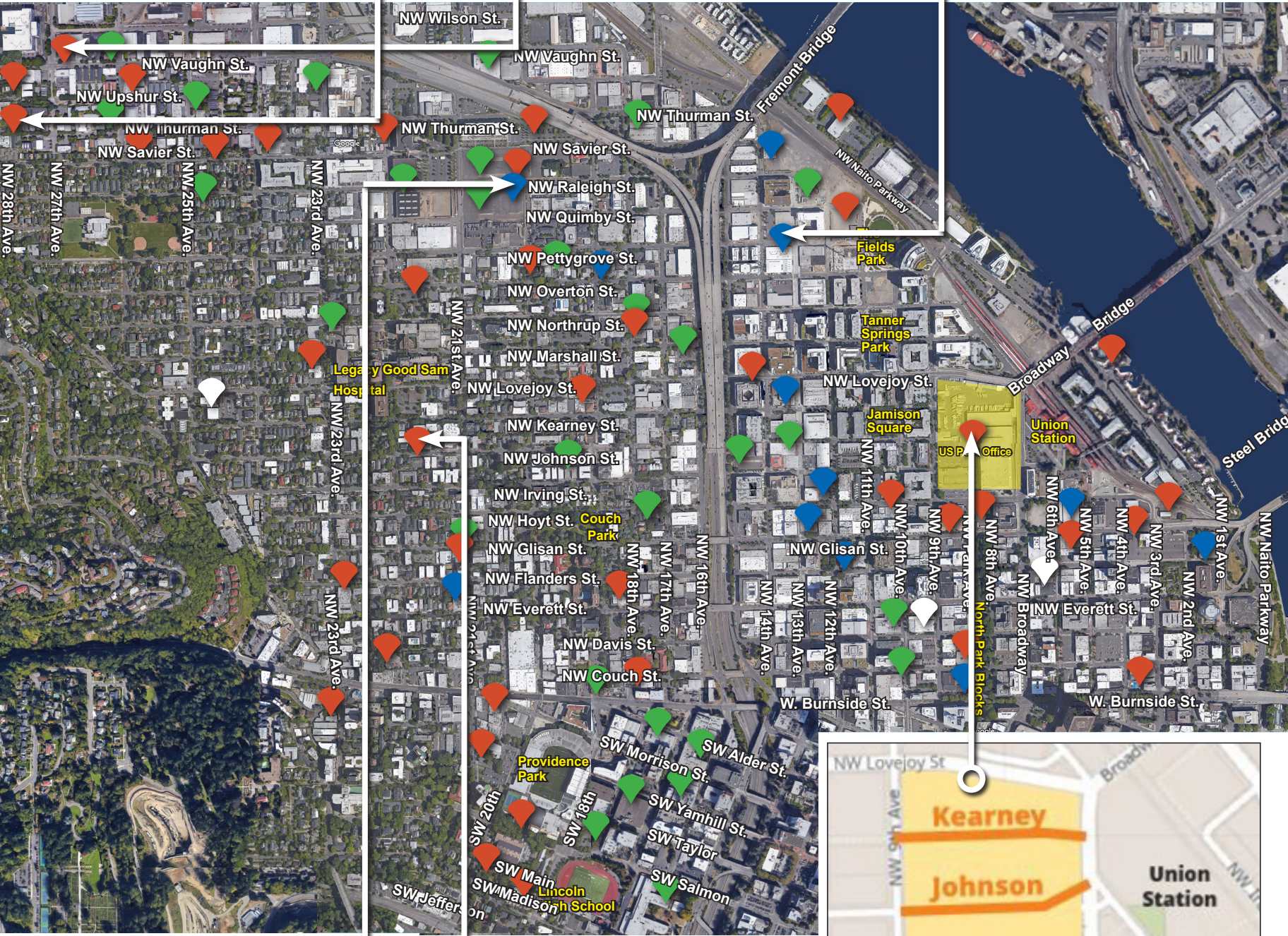
MERIWETHER'S

Long-delayed plans for a multistory building to replace Meriwether's Restaurant at 2601 NW Vaughn St. have been superseded by a concept that includes a 14-stall food cart pod, a 22-foot-tall pavilion and dividing the existing restaurant into two separate restaurant/bar spaces. Meriwether's owners John and Renee Orlando have sought advice on the plan from the Bureau of Development Services.



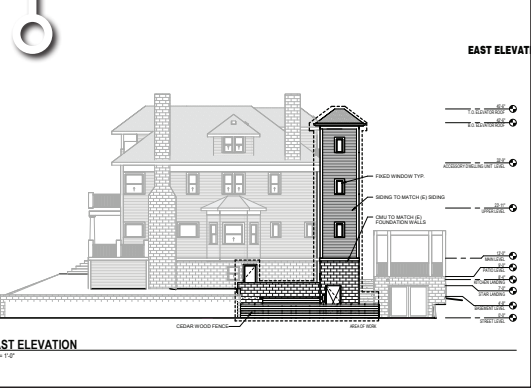
HOLDEN OF PEARL

Construction continues on Holden of Pearl, an 18-story building with independent and assisted living units for seniors. Building permits were issued to its Seattle-based developer two years ago.



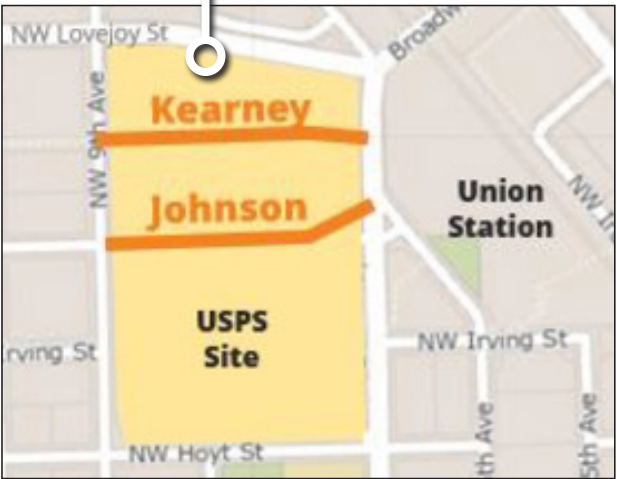
2030 NW RALEIGH ST.

The seven-story Freewell Apartments (right) at 2030 NW Raleigh St. will eventually overlook the Slabtown Park at the corner of Northwest 20th and Pettygrove streets. Design work for the park is on hold until the developer of Slabtown Square (left), Guardian Real Estate, transfers the land to the city.



2205 NW JOHNSON ST

The new owner of Cohn-Sichel House at 2205 NW Johnson St., whose health issues limit his mobility, intends to install an exterior elevator reach to all three floors. Because the house is a historic landmark and is in the Alphabet Historic District, the project is subject to design review. The Northwest District Association supported the modification and city approval is pending.



FORMER USPS SITE

The city of Portland is seeking a \$15 million federal grant to extend two streets through the 14-acre former USPS site west of Northwest Broadway. The project is intended to promote "an equitable economy" and create "a vibrant and welcoming neighborhood."



For an interactive and continually updated version of this map, visit:
NextPortland.com
Also see the development map maintained by the Goose Hollow Foothills League:
goosehollow.org/images/GooseHollowDevelopmentMap.pdf