

NW PORTLAND / PEARL DISTRICT DEVELOPMENT MAP

RIDGELINE

Ethos Development LLC has purchased the Trovo Design building on an adjacent lot to expand its redevelopment plans for the site of Elysian Garden, a 36-unit courtyard apartment complex at 2631 NW Upshur St. The four/five story replacement building planned, recently dubbed Ridgeline and projected to have about 165 units, was designed for a 200-by-200-foot lot. The parcel now becomes 250-by-200 feet.



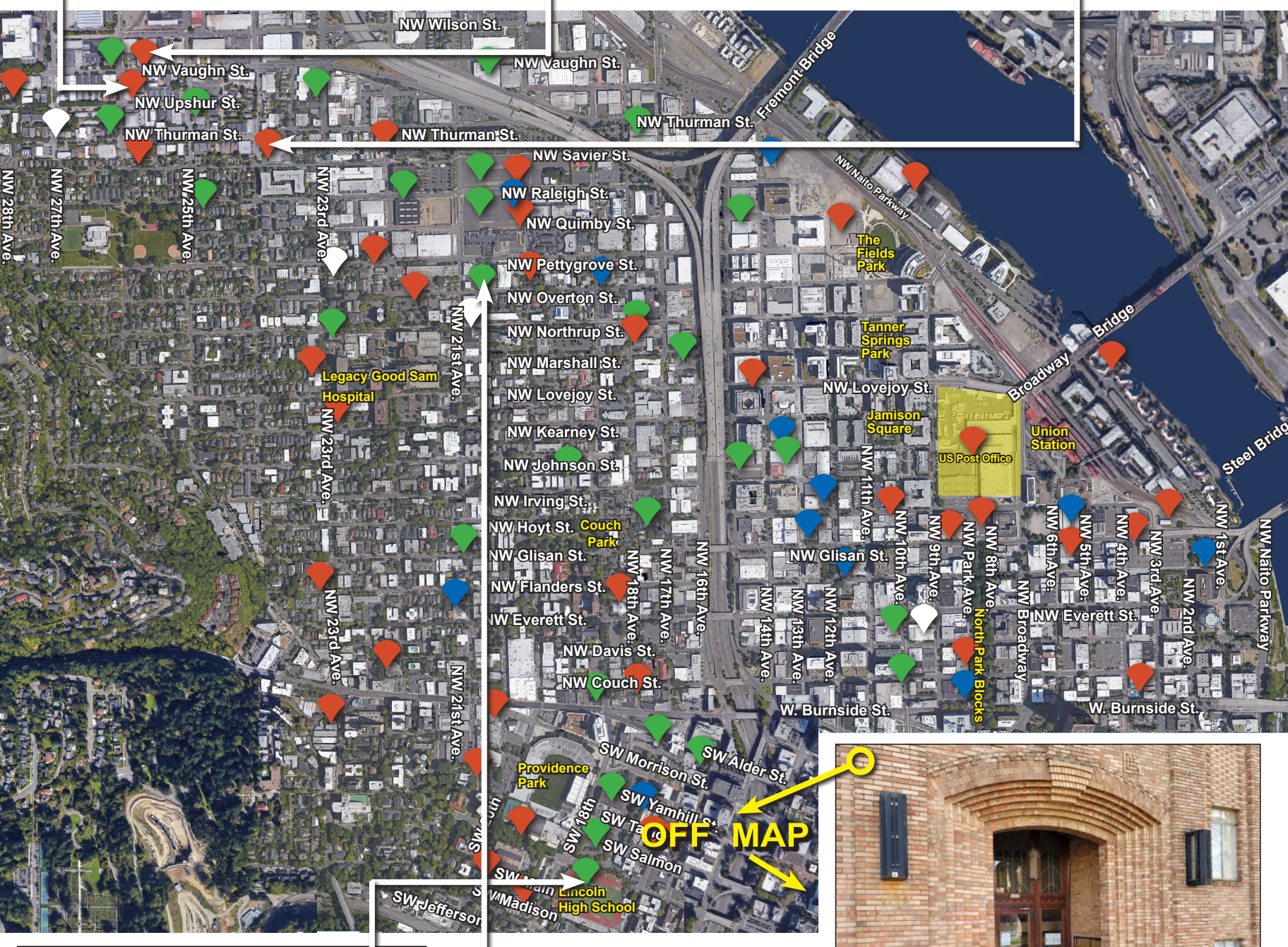
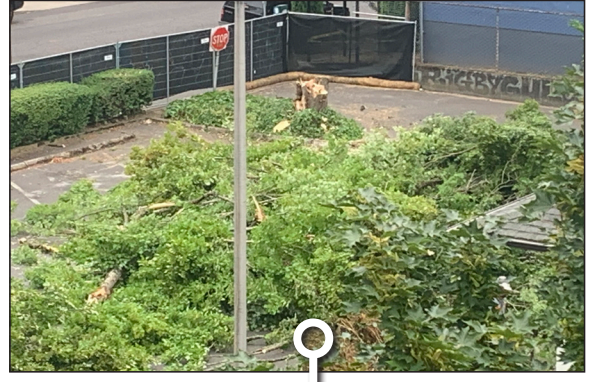
TROVO DESIGN

Robert L. Thomas is selling the 1925 industrial building where he has operated Trovo Design, a metalcraft business, since 1986. The buyer, Ethos Development LLC, intends to demolish the structure to expand the apartment building already planned on the parcel to the east.



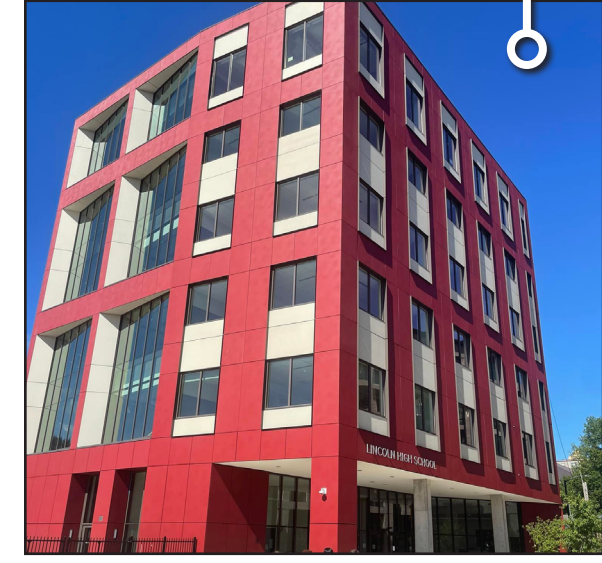
FOREST PARK POST OFFICE

Demolition of the Forest Park Post Office began last month with the cutting of two substantial trees along the parking lot. Customers are directed to use the main Portland post office at 745 NW Hoyt St., the Central Station at 204 SW Fifth Ave. or the Waterfront post office at 101 SW Madison St. until a branch at 2017 NW Vaughn St. opens. Urban Development Partners plans to build a four-story office building as its headquarters on the parcel.



PARKWAY APARTMENTS

The delay period for Portland State University's application to raze Parkway Apartments/Residence Hall at 1609 SW Park Ave. expires Sept. 29. The Downtown Neighborhood Association and the Architectural Heritage Center oppose demolition of the 1931 structure, which is deemed by the Oregon State Historic Preservation Office to have "contributing" historic merit.



LINCOLN HIGH SCHOOL

A grand opening celebration of the new Lincoln High School at Southwest 18th and Salmon will be held Saturday, Sept. 17, at 10 a.m. Tours of the campus will be led from 11 a.m.-2 p.m. For more information, visit lincolnbond.pps.net.



NORTHWEST 20TH AND PETTYGROVE

Two buildings are under construction on the superblock bounded by Northwest 20th, 21st, Pettygrove and Raleigh streets. The crane at left is for Slabtown Square, a mixed-use building with 200 apartment units surrounding a public square. The crane at the right is associated with a 180-unit apartment building. The half-block in the foreground now used for staging the current projects is to be a public park.



For an interactive and continually updated version of this map, visit: NextPortland.com
 Also see the development map maintained by the Goose Hollow Foothills League: goosehollow.org/images/GooseHollowDevelopmentMap.pdf