

NAC NO 161-23025
DRAWN AC
CHECKED BS
DATE 07/15/202

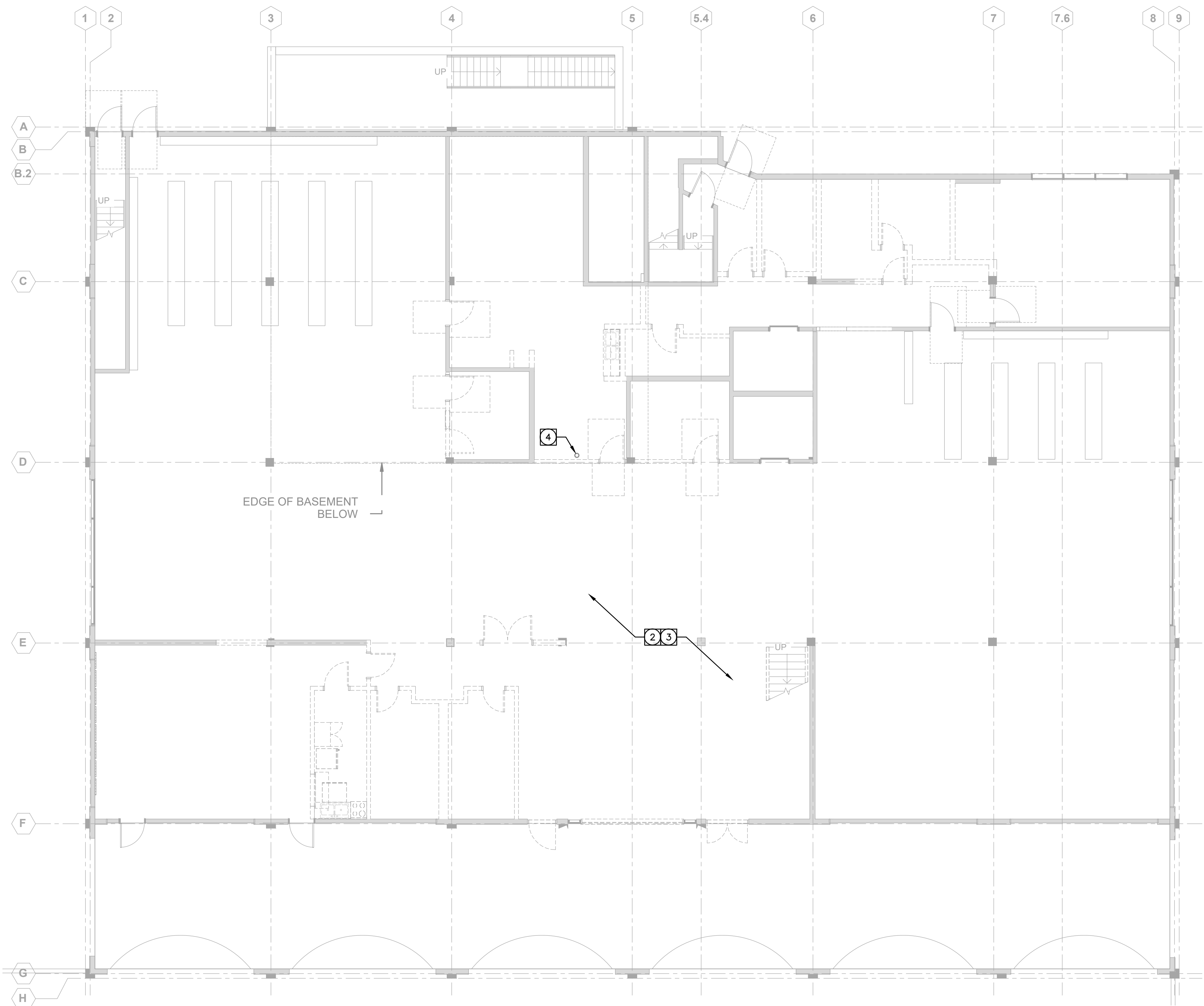
BASEMENT AND
LEVEL 1 LOW
VOLTAGE
DEMOLITION
PLANS

T2.01

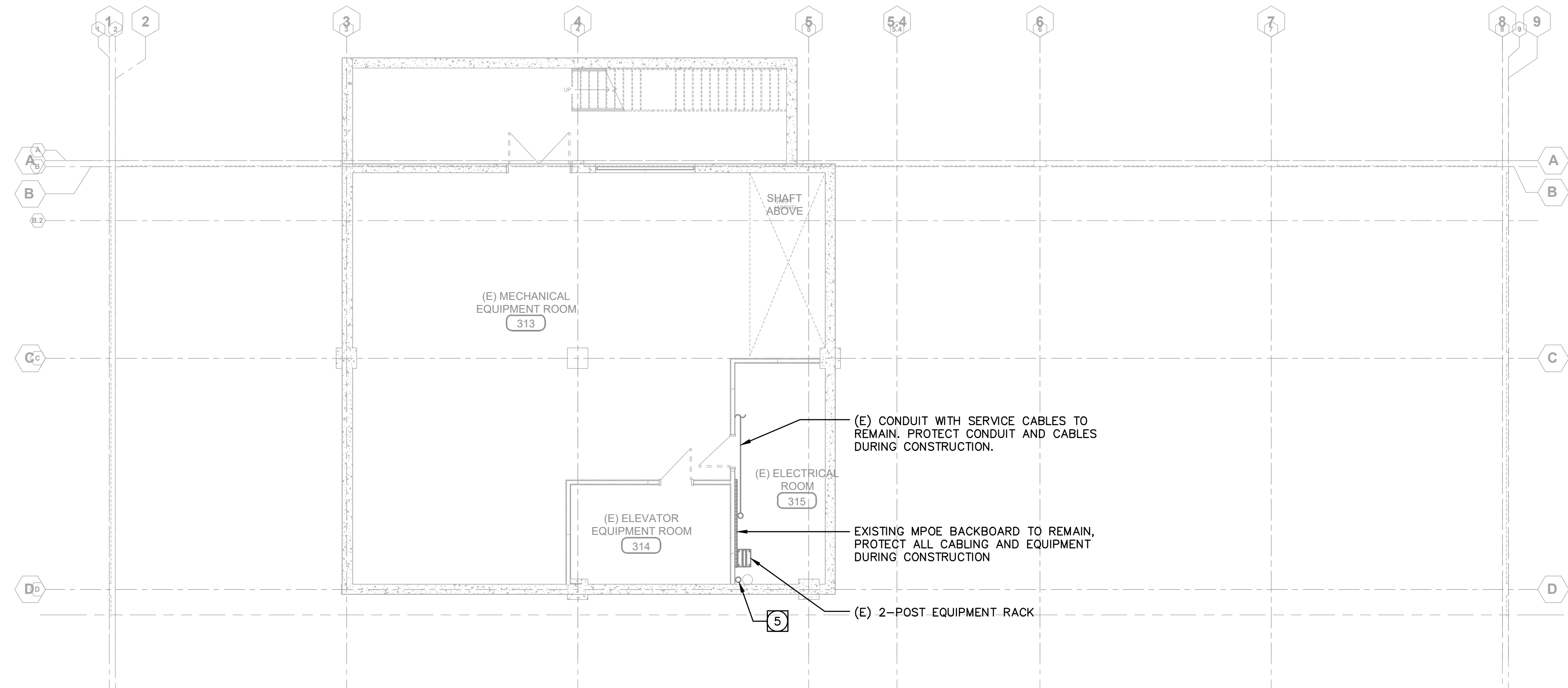
1. REFERENCE SHEET T0.01 FOR SYMBOL DEFINITIONS, REFERENCES, ABBREVIATIONS AND DRAWING INDEX.
2. REFERENCE SHEET T0.02 FOR GENERAL NOTES AND SPECIFICATIONS.
3. THE EXISTING CONDITIONS SHOWN ARE FROM AVAILABLE RECORD DRAWINGS AND SHOWN FOR REFERENCE ONLY. CONTRACTOR SHALL VERIFY ACTUAL EXISTING CONDITIONS AT SITE PRIOR TO SUBMITTING BID. ALL DEMOLITION, ALTERATION, EXTENSION, RELOCATION, REHABILITATION WORK SHALL BE INDICATED ON CONTRACT. NO ADDITIONAL ALLOWANCE OR CHANGE ORDERS WILL BE ACCEPTED.
4. CONTRACTOR IS RESPONSIBLE TO RELOCATE OR REMOVE FROM WALLS, CEILINGS, FLOOR SPACES, ETC. ANY EXISTING CONDUITS, WIRES, BOXES, FITTINGS, FIXTURES OR OTHER LOW VOLTAGE COMPONENTS THAT INTERFERES WITH PLANNED REMODEL WORK.
5. NOTIFY THE ENGINEER IMMEDIATELY WHEREVER EXISTING EQUIPMENT IS ENCOUNTERED WHICH WAS NOT BEING DUE TO THE NEW CONSTRUCTION, OR NOT INDICATED ON "AS-BUILT" DRAWINGS OR WAS BURIED UNDERGROUND OR EMBEDDED IN STRUCTURE WALLS.
6. CAREFULLY PROTECT ALL WALLS, TRIM, FLOORS, EQUIPMENT, UTILITY LINES AND MATERIALS. WHEN WORKING ON FINISHED SURFACES, LIMIT DAMAGE TO THE SMALLEST AREA POSSIBLE AND RESTORE TO THE ORIGINAL CONDITION. ALL SPACES WHICH ARE DAMAGED BECAUSE OF THE INSTALLATION OF THIS WORK.
7. EQUIPMENT, MATERIALS AND SUPPLIES TEMPORARILY REMOVED FOR PROTECTION SHALL BE RE-INSTALLED IN ORIGINAL LOCATIONS. ANY MATERIALS DAMAGED SHALL BE REPLACED WITH NEW MATERIALS OF LIKE KIND AND QUALITY.
8. DEMOLITION WORK SHALL BE DONE IN A MANNER WHICH WILL NOT CAUSE UNNECESSARY CONVEYANCE OF DANGER TO THE USERS OF THE PREMISES AND ADJACENT SITE, AND NOT INTERFERE WITH ITS OPERATION. ANY DEMOLITION WORK TO BE PERFORMED MUST BE PLANNED IN ADVANCE.
9. DO ALL DRILLING, CUTTING, ETC. REQUIRED TO DEMOLISH ELECTRICAL PANELS AS INSTRUCTIONS. REMOVE ALL ACCESSIBLE LOCATIONS (WALLS) EXPOSED BY REMOVAL OF DEVICES.
10. RESEAL ALL PENETRATIONS OR OPENINGS THROUGH WALLS, CEILING, FLOORS, ETC., TO MAINTAIN THE RATING OF STRUCTURE.
11. ALL REMOVED MATERIALS AND EQUIPMENT WHICH IS SALVAGED MATERIALS SHALL REMAIN IN THE PROPERTY OF THE OWNER. DELIVER SUCH SALVAGED MATERIALS AND EQUIPMENT ON THE PREMISES AS DIRECTED BY OWNER AND NEATLY PILE OR STORE THEM AND PROTECT THEM FROM DAMAGE. DISPOSE OF ALL HAZARDOUS MATERIALS PER GUIDELINES OF THE STATE OF CALIFORNIA, DEPARTMENT OF HEALTH SERVICES AND OTHER AGENCIES HAVING JURISDICTION.
12. CONTRACTOR SHALL FIELD VERIFY EXISTING LOW VOLTAGE CONDUIT/WIRING RUNS, REUSE AS REQUIRED AND REMOVE ALL UNUSED CONDUIT/WIRING. REMOVE ALL UNNECESSARY ACCESSIBLE LOCATIONS (WALLS TO REMAIN) CAN BE ABANDONED IN PLACE, REMOVE UNUSED WIRING.

NOT ALL KEYNOTES MAY BE USED ON THIS SHEET

- 1 DISCONNECT EXISTING COPPER/FIBER SERVICE CABLES AND PULL DOWN TO MPOE IN BASEMENT. COIL CABLES AND SECURE TO BACKBOARD FOR RE-INSTALLATION. COORDINATE WITH SERVICE PROVIDERS AND OWNER.
- 2 DISCONNECT AND REMOVE ALL EXISTING LOW VOLTAGE HORIZONTAL CABLING IN ITS ENTIRETY. COORDINATE WORK WITH OWNER.
- 3 REMOVE EXISTING EQUIPMENT, INCLUDING BUT NOT LIMITED TO, EQUIPMENT RACKS, VERTICAL CABLE MANAGERS, HORIZONTAL CABLE MANAGERS, LADDER TRAYS, COOPER AND FIBER CONNECTING HARDWARE, ETC.
- 4 EXISTING 4 CONDUIT UP TO LEVEL 3 FOR DEMARK EXTENSION TO EXISTING MAIN COMPUTER ROOM (MCR) ON LEVEL 3. PROTECT CONDUIT AND SERVICE CABLES DURING CONSTRUCTION.



SCALE	2
1/8"=1'-0"	



SCALE	1
1/8"=1'-0"	

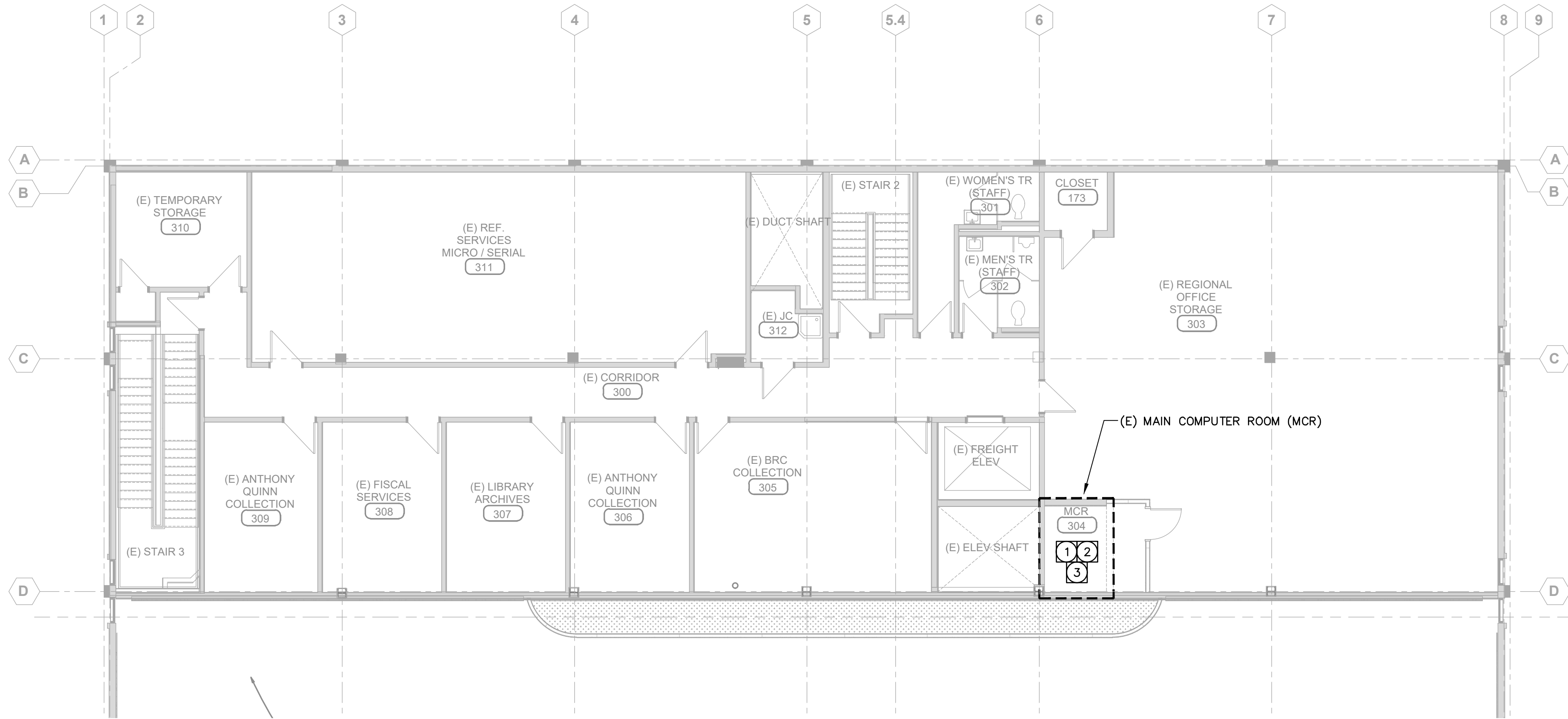
SHEET NOTES

- REFERENCE SHEET T0.01 FOR SYMBOL DEFINITIONS, REFERENCES, ABBREVIATIONS AND DRAWING INDEX.
- REFERENCE SHEET T0.02 FOR GENERAL NOTES AND SPECIFICATIONS.
- THE EXISTING CONDITIONS SHOWN ARE FROM AVAILABLE RECORD DRAWINGS AND SHOWN FOR REFERENCE ONLY. CONTRACTOR SHALL VERIFY ACTUAL EXISTING CONDITIONS AT SITE PRIOR TO SUBMITTING BID. ALL DEMOLITION, ALTERATION, EXTENSION, RELOCATION, REHABILITATION WORK SHALL BE INCLUDED IN CONTRACT. NO ADDITIONAL ALLOWANCE OR CHANGE ORDERS WILL BE ACCEPTED.
- CONTRACTOR IS RESPONSIBLE TO RELOCATE OR REMOVE FROM WALLS, CEILINGS, FLOOR SPACES, ETC. ANY EXISTING CONDUITS, WIRES, BOXES, FITTINGS, FIXTURES OR OTHER LOW VOLTAGE COMPONENTS THAT INTERFERES WITH PLANNED REMODEL WORK.
- NOTIFY THE ENGINEER IMMEDIATELY WHEREVER EXISTING EQUIPMENT IS ENCOUNTERED WHICH MUST BE RELOCATED DUE TO THE NEW CONSTRUCTION, OR NOT INDICATED ON "AS-BUILT" DRAWINGS OR WAS BURIED UNDERGROUND OR EMBEDDED IN STRUCTURE WALLS.
- CAREFULLY PROTECT ALL WALLS, TRIM, FLOORS, EQUIPMENT, UTILITY LINES AND MATERIALS. WHEN WORKING ON FINISHED SURFACES, LIMIT DAMAGE TO THE SMALLER AREA IF POSSIBLE AND RESTORE TO THE ORIGINAL CONDITION ALL SURFACES WHICH ARE DAMAGED BECAUSE OF THE INSTALLATION OF THIS WORK.
- EQUIPMENT, MATERIALS AND SUPPLIES TEMPORARILY REMOVED FOR PROTECTION SHALL BE RE-INSTALLED IN ORIGINAL LOCATIONS. ANY MATERIALS DAMAGED SHALL BE REPLACED WITH NEW MATERIALS OF LIKE KIND AND QUALITY.
- DEMOLITION WORK SHALL BE DONE IN A MANNER WHICH WILL NOT CAUSE UNNECESSARY INCONVENIENCE OR DANGER TO USERS OF THE PREMISES AND ADJACENT SITE, AND NOT INTERFERE WITH ITS OPERATION ANY DEMOLITION WORK TO BE PERFORMED MUST BE PLANNED IN ADVANCE.
- DO ALL DRILLING, CUTTING, ETC. REQUIRED TO DEMOLISH ELECTRICAL WORK AS INDICATED OR PROVIDE BLANK COVER PLATE ON ALL OUTLETS EXPOSED BY REMOVAL OF DEVICES.
- RESEAL ALL PENETRATIONS OR OPENING THROUGH WALLS, CEILING, FLOORS, ETC., TO MAINTAIN THE RATING OF STRUCTURE.
- ALL REMOVED MATERIALS AND EQUIPMENT WHICH IS SALVAGED MATERIALS SHALL REMAIN IN THE PROPERTY OF THE OWNER. DELIVER SUCH SALVAGED MATERIALS AND EQUIPMENT ON THE PREMISES AS DIRECTED BY OWNER AND NEATLY PILE OR STORE THEM AND PROTECT FROM DAMAGE. DISPOSE OF ALL HAZARDOUS MATERIAL PER GUIDELINE OF THE STATE OF CALIFORNIA, DEPARTMENT OF HEALTH SERVICES AND OTHER AGENCIES HAVING JURISDICTION.
- CONTRACTOR SHALL FIELD VERIFY EXISTING LOW VOLTAGE CONDUIT/WIRING RUNS, REUSE AS REQUIRED AND REMOVE ALL UNUSED CONDUIT/WIRING. UNUSED CONDUIT IN INACCESSIBLE LOCATIONS (WALLS TO REMAIN) CAN BE ABANDONED IN PLACE. REMOVE UNUSED WIRING.

KEYNOTES

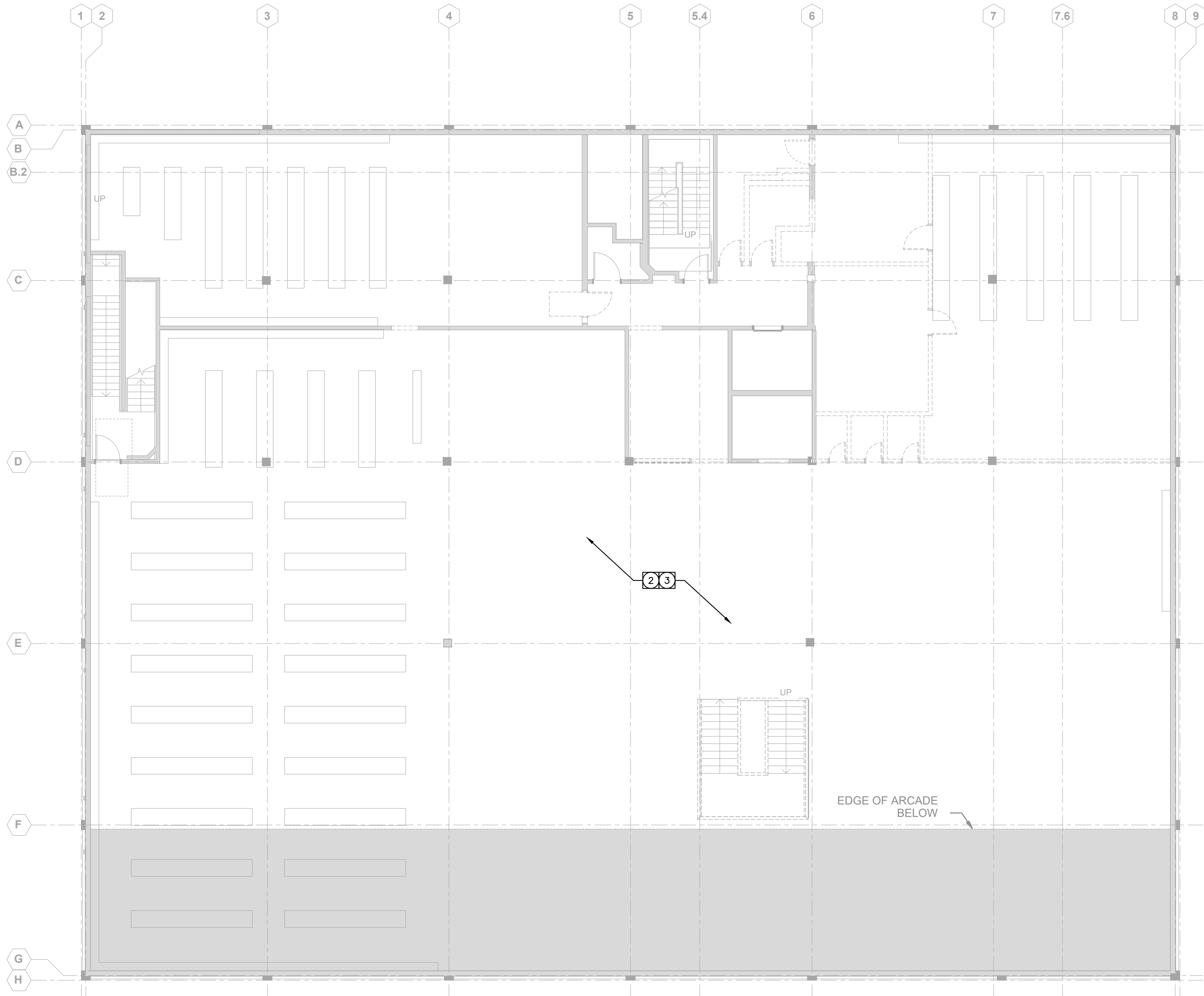
NOT ALL KEYNOTES MAY BE USED ON THIS SHEET.

- DISCONNECT EXISTING COPPER/FIBER SERVICE CABLES AND PULL DOWN TO MPOE IN BASEMENT. COIL CABLES AND SECURE TO BACKBOARD FOR RE-INSTALLATION. COORDINATE WORK WITH SERVICE PROVIDERS AND OWNER.
- DISCONNECT AND REMOVE ALL EXISTING LOW VOLTAGE HORIZONTAL CABLING IN ITS ENTIRETY. COORDINATE WORK WITH OWNER.
- REMOVE EXISTING EQUIPMENT, INCLUDING BUT NOT LIMITED TO, EQUIPMENT RACKS, VERTICAL CABLE MANAGERS, HORIZONTAL CABLE MANAGERS, LADDER TRAYS, COPPER AND FIBER CONNECTING HARDWARE, ETC.
- EXISTING 4" CONDUIT UP TO LEVEL 3 FOR DEMARK EXTENSION TO EXISTING MAIN COMPUTER ROOM (MCR) ON LEVEL 3. PROTECT CONDUIT AND SERVICE CABLES DURING CONSTRUCTION.



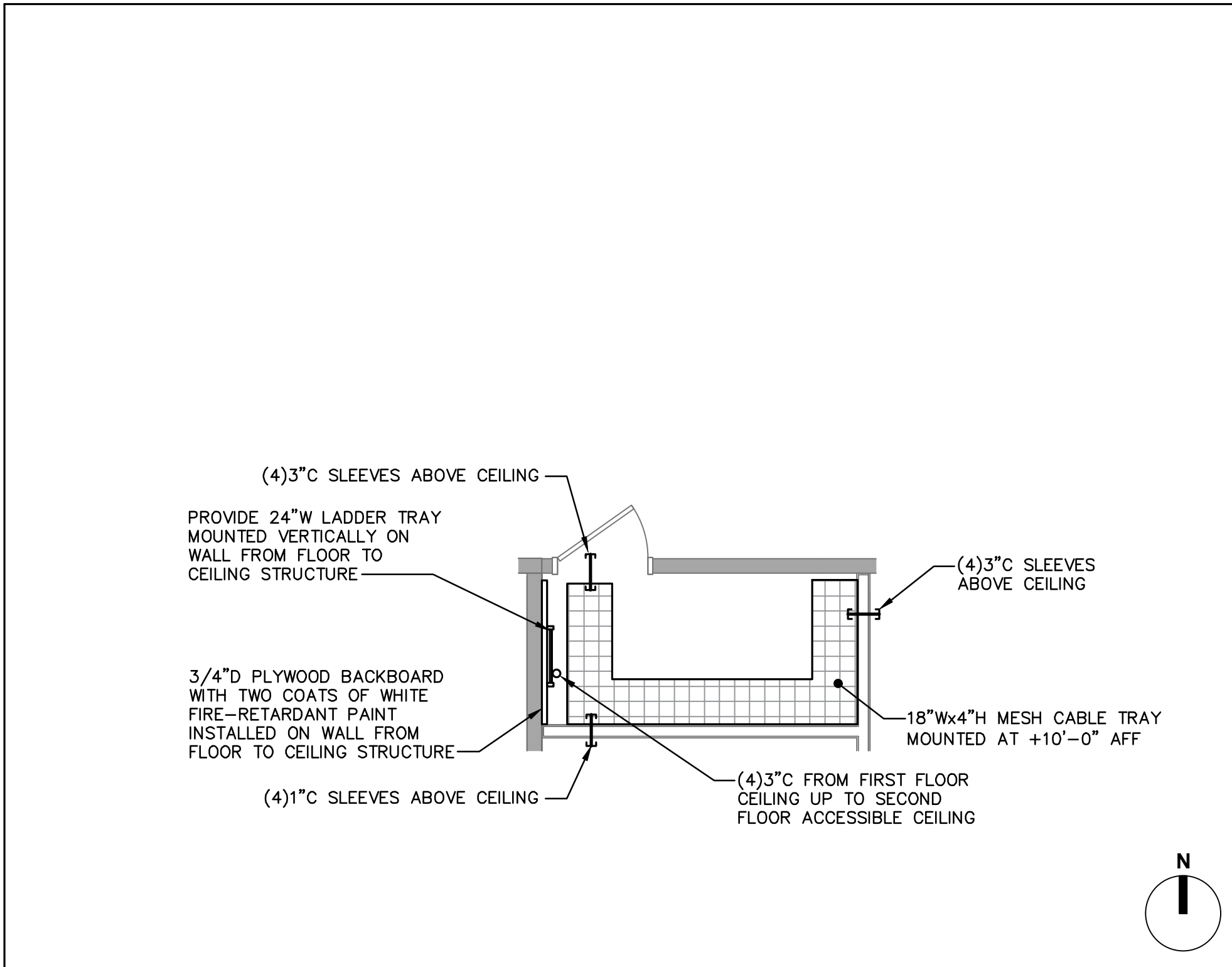
LEVEL 3 LOW VOLTAGE DEMOLITION PLAN

SCALE
1/8"=1'-0" 2



LEVEL 2 LOW VOLTAGE DEMOLITION PLAN

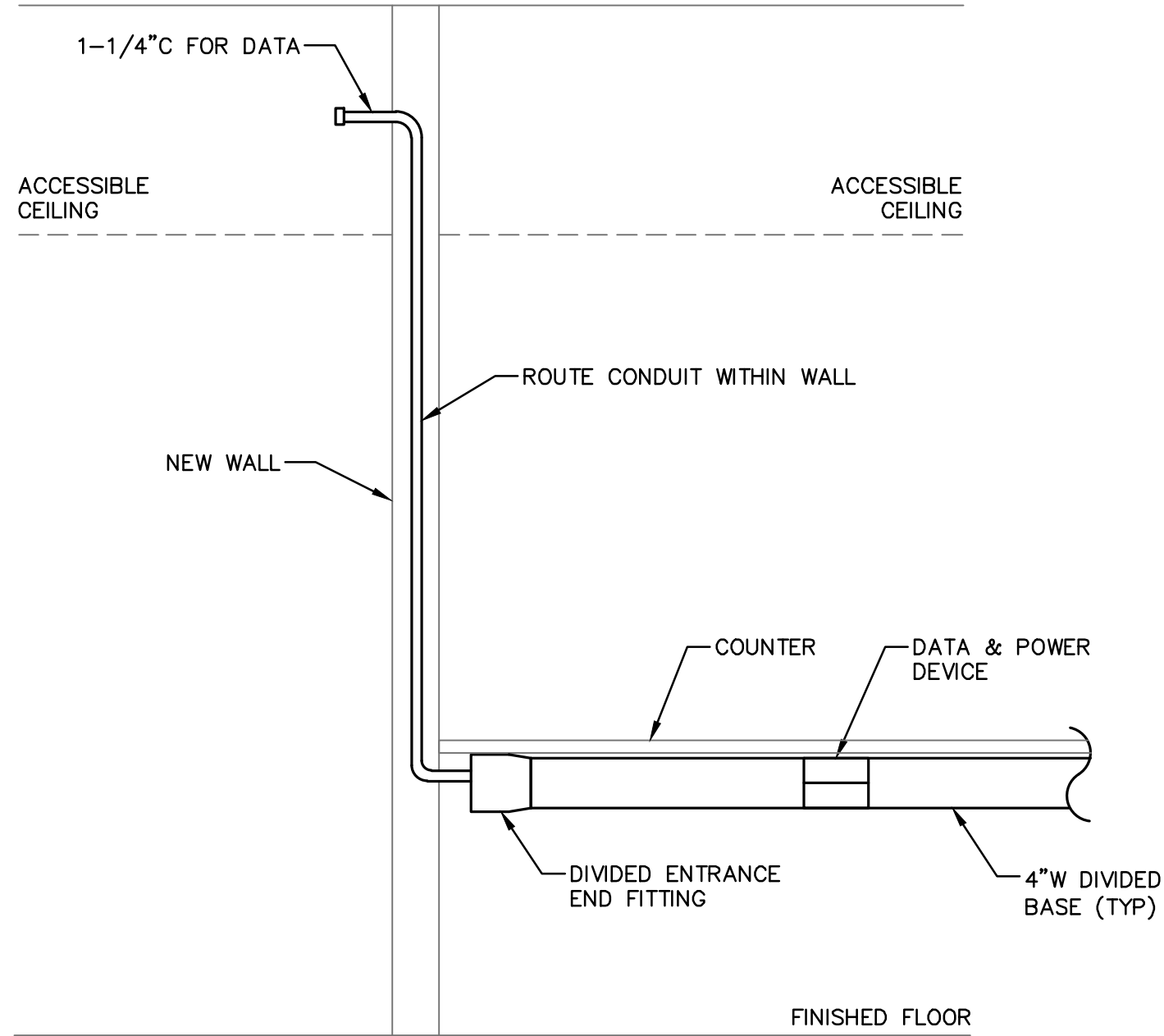
SCALE
1/8"=1'-0" 1



ENLARGED STORAGE ROOM PLAN

SCALE
1/4"=1'-0"

3

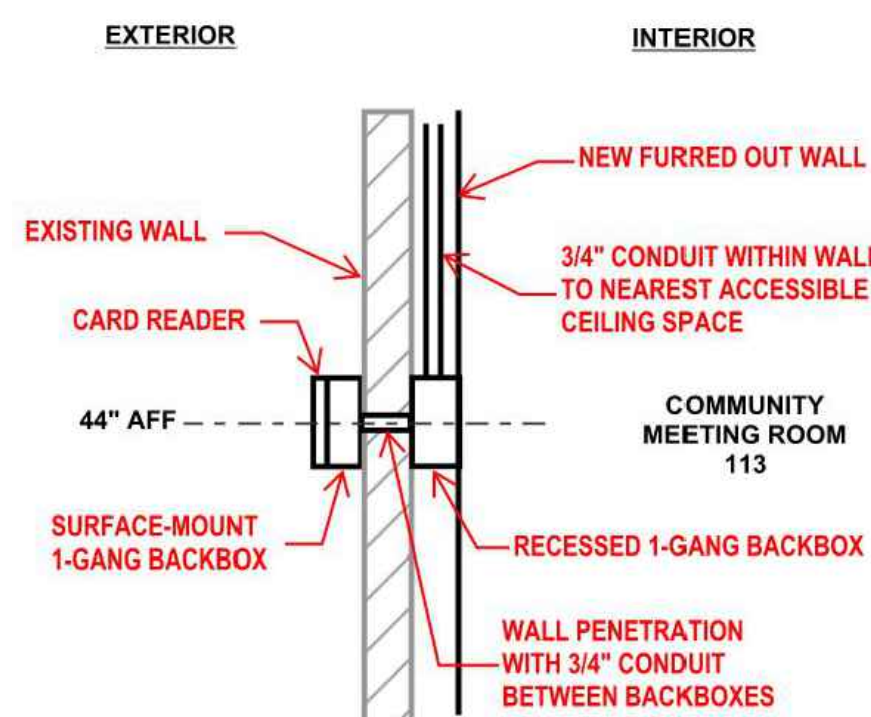


NOTE:
MOUNT SURFACE METAL RACEWAYS (SMRs)
BELOW AND TIGHT TO UNDERSIDE OF COUNTER.

SURFACE METAL RACEWAY DETAIL (BACK-OF-HOUSE ONLY)

SCALE
NONE

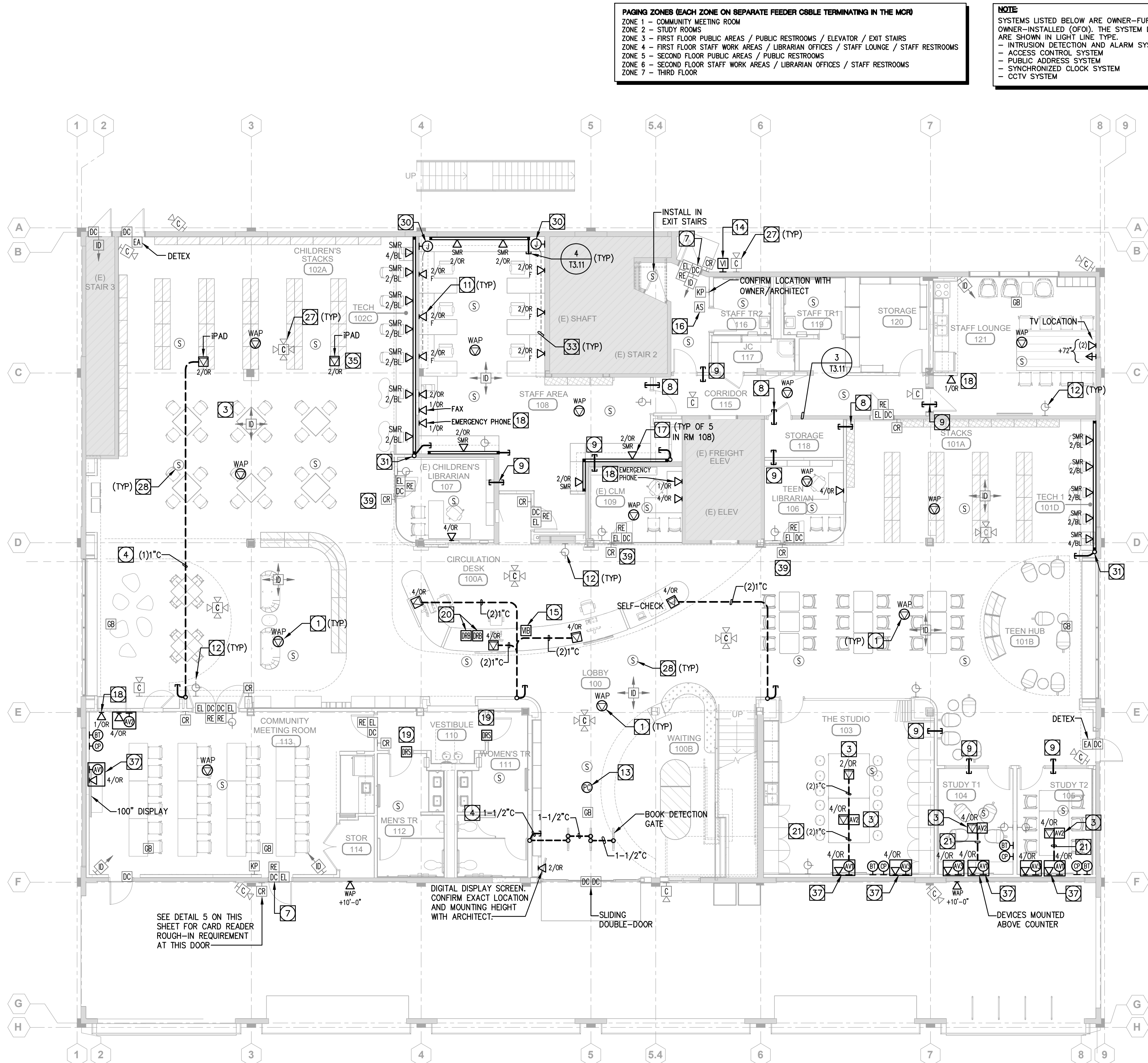
4



ROUGH-IN FOR CARD READER AT DOOR 113C

SCALE
NONE

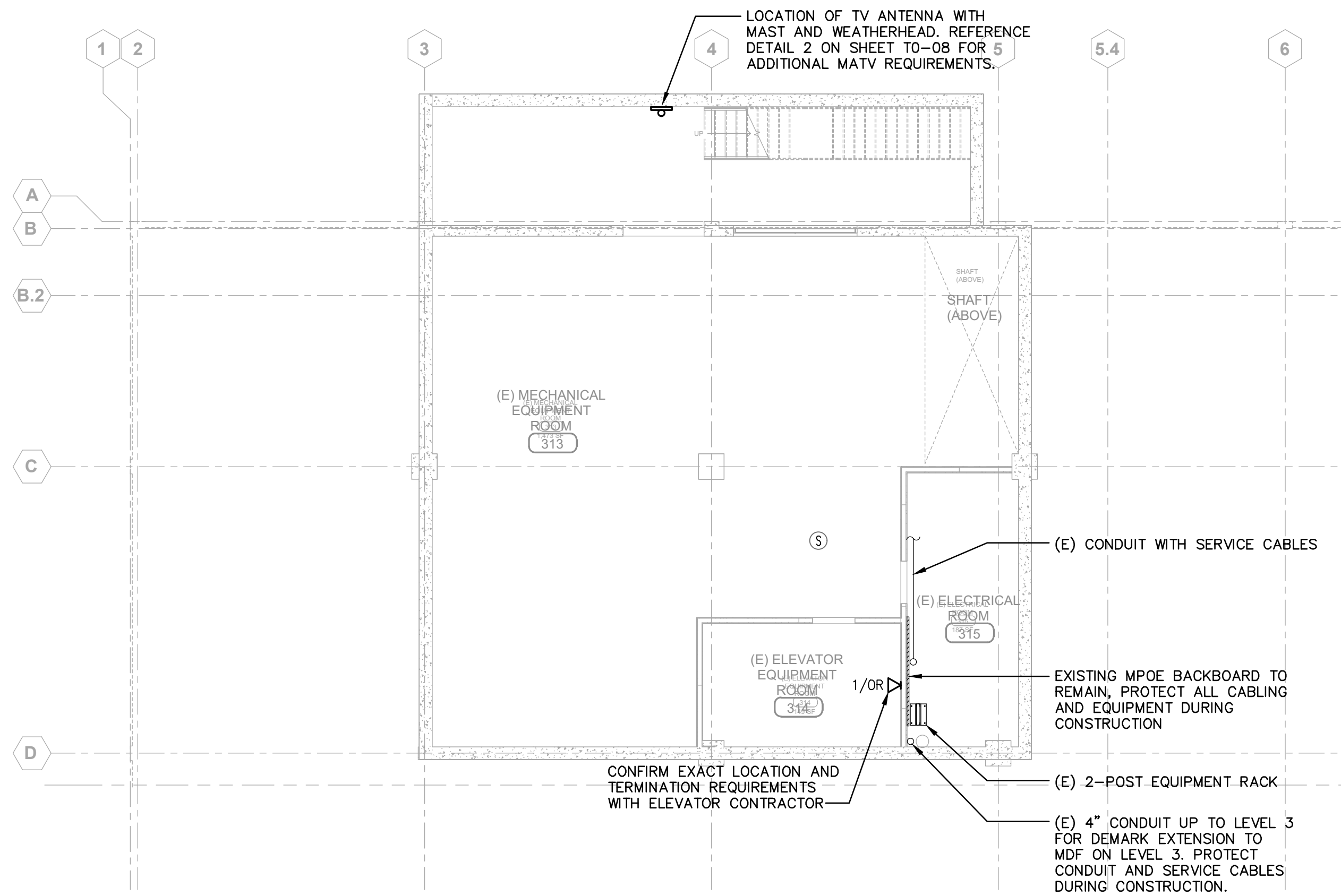
5



TECHNOLOGY LEVEL 1 PLAN

SCALE
1/8"=1'-0"

2



TECHNOLOGY BASEMENT PLAN

SCALE
1/8"=1'-0"

1

SHEET NOTES

- REFERENCE SHEET T0.01 FOR SYMBOL DEFINITIONS, REFERENCES, ABBREVIATIONS AND DRAWING INDEX.
- REFERENCE SHEET T0.02 FOR GENERAL NOTES AND SPECIFICATIONS.
- ALL EXPOSED LOW VOLTAGE CONDUITS SHALL BE PAINTED TO MATCH SURROUNDING FINISHES. COORDINATE WORK WITH ARCHITECT/DISTRICT.
- PROVIDE CONDUITS WITH PULL TAPE/LINE WITH FIVE (5) FEET OF ADDITIONAL PULL TAPE COILED AT EACH END.
- CONDUIT BEND RADII SHALL BE A MINIMUM OF SIX (6) TIMES THE INTERNAL DIAMETER FOR CONDUITS 2" AND UNDER AND TEN (10) TIMES THE INTERNAL DIAMETER FOR CONDUITS GREATER THAN 2".
- CONDUITS AND SLEEVES PROTRUDING THROUGH FLOOR SHALL TERMINATE MINIMUM 4" ABOVE FINISHED FLOOR. REFERENCE SPECIFICATIONS FOR ADDITIONAL REQUIREMENTS.
- ALL CONDUIT PENETRATIONS INTO THE BUILDING SHALL BE SEALED WITH MECHANICAL SEALS OR PLUGS TO PREVENT THE INFILTRATION OF GAS AND/OR WATER.
- PROVIDE LABEL AND IDENTIFICATION FOR EACH CONDUIT AND PULL BOX PER OWNER STANDARDS. CONDUITS SHALL BE TAGGED WITH ROOM/SPACE/LOCATION AT BOTH ENDS AND LENGTH OF CONDUIT RUN.
- PENETRATIONS THROUGH FIRE-RATED WALLS SHALL BE PROTECTED WITH AN APPROVED FIRE STOP SYSTEM EQUAL TO OR GREATER THAN THE RATING OF THE WALL BEING PENETRATED.
- ALL DEVICES MOUNTED BACK-TO-BACK ON COMMON WALLS SHALL BE INSTALLED IN SEPARATE BOXES AND OFFSET 24" MINIMUM OR PROVIDED WITH PUTTY OR ANOTHER APPROVED SOUND PROOF BACKING.
- WHEN EXPOSED CEILING OR OPEN GRID CONDITIONS EXIST, CONTRACTOR SHALL INSTALL LOW VOLTAGE CABLES IN CONDUIT SUPPORTED INDEPENDENTLY FROM STRUCTURE ABOVE. EXPOSED CABLEING IN OPEN TYPE CEILING APPLICATIONS INSTALLED ON D-RINGS, D-HOOKS OR SIMILAR APPARATUS WILL NOT BE ACCEPTED UNLESS APPROVED IN WRITING BY ARCHITECT/ENGINEER PRIOR TO BEGINNING WORK. CONTRACTOR SHALL INCLUDE AN ALLOWANCE IN HIS BASE BID FOR THE INSTALLATION OF LOW VOLTAGE CABLES IN OPEN CEILING AS DESCRIBED.
- EXPOSED CABLES/CONDUCTORS INSTALLED IN A PLENUM SPACE SHALL BE LISTED FOR SUCH ENVIRONMENT AND INSTALLATION SHALL CONFORM TO NEC, OR CEC WHERE ADOPTED, ARTICLE 300.22(C).

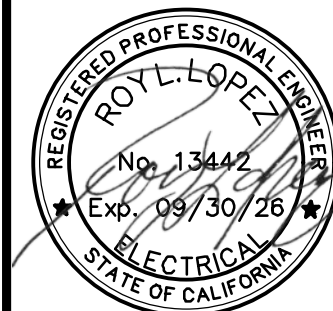
KEYNOTES

- WIRELESS ACCESS POINT DEVICE. PROVIDE (2) CAT 6 PLENUM-RATED CABLES, BLUE JACKET. TERMINATE CABLES WITH CAT 6 RJ-45 ORANGE JACKS ON BOTH ENDS. CONFIRM EXACT LOCATION WITH OWNER/ARCHITECT.
- INSTALLED DEVICE IN WIREMOLD V4000 DIVIDED SURFACE METAL RACEWAY. COORDINATE INSTALLATION WITH POWER RECEPTACLE.
- DATA OUTLET INSTALLED IN MULTI-SERVICE RECESSED FLOOR BOX.
- ROUTE CONDUIT UNDERGROUND AND UP THROUGH WALL CAVITY.
- PROVIDE 4-GANG 4" STI E2-PATH SLEEVES.
- INSTALL JUNCTION BOX WITHIN CASEWORK. COORDINATE EXACT LOCATION WITH CASEWORK INSTALLER/MANUFACTURER.
- PROVIDE SEPARATE DEDICATED MAGNETIC DOOR CONTACT FOR EACH ACCESS CONTROL SYSTEM AND INTRUSION DETECTION AND ALARM SYSTEM. THE ACCESS CONTROL DOOR CONTACTS SHALL CONNECT TO ACCESS CONTROLLER TO RESET DOOR LOCKING DEVICE AT THE DOOR WHEN OPENED.
- PROVIDE WALL PENETRATIONS WITH (4) 3/8" SLEEVES ABOVE CEILING.
- PROVIDE WALL PENETRATIONS WITH (4) 1" SLEEVES ABOVE CEILING.
- PEOPLE COUNTER SENSOR. COORDINATE EXACT LOCATION WITH OWNER/ARCHITECT PRIOR TO ROUGH-IN.
- MODULAR FURNITURE DEVICE. INSTALL DEVICE IN MODULAR FURNITURE CHANNEL.
- SYNCHRONIZED WIRED ANALOG CLOCK. PROVIDE (1) CAT 6 PLENUM-RATED CABLE FROM DEVICE TO MAIN COMPUTER ROOM (MCR). TERMINATE CABLE WITH CAT 6 ORANGE RJ-45 JACK. PROVIDE CAT 6 RJ-45 SPLITTER TO DAISY-CHAIN CLOCKS FROM FIRST CLOCK UP TO LAST CLOCK AND TO MASTER CLOCK CONTROLLER LOCATED IN MCR.
- PEOPLE COUNTING SENSOR MOUNTED TO CEILING. PROVIDE (2) CAT 6 PLENUM-RATED CABLES WITH BLUE OUTER JACKETS. TERMINATE CABLES WITH CAT 6 ORANGE RJ-45 JACKS ON BOTH ENDS (SENSOR AND PATCH PANEL IN MCR). CONFIRM EXACT LOCATION WITH OWNER.
- VIDEO INTERCOM STATION WITH DOOR RELEASE RELAY. PROVIDE CAT 6 PLENUM RATED CABLE TO BASE STATION AT CIRCULATION DESK. CONFIRM EXACT LOCATION WITH OWNER/ARCHITECT.
- VIDEO INTERCOM BASE STATION. ALL VIDEO INTERCOM STATIONS SHALL CONNECT TO BASE STATION. CONFIRM EXACT LOCATION WITH OWNER/ARCHITECT.
- INSTALL CEILING-MOUNTED INTRUSION ALARM SIREN AT LOCATION INDICATED. CONFIRM REQUIREMENTS IN OTHER AREAS WITH OWNER/ARCHITECT.
- DEVICE ABOVE COUNTER. COORDINATE INSTALLATION WITH POWER.
- INSTALL DEVICE AT +44" AFF FOR WALL-MOUNTED PHONE. PROVIDE PANDUIT FACEPLATE PART #KWP6Y.
- DOOR RELEASE SWITCH. PROVIDE 3/4" CONDUIT FROM ELECTRIFIED DOOR STRIKE TO MAIN COMPUTER ROOM OR NEAREST ACCESSIBLE CEILING SPACE.
- DOOR RELEASE BUTTON SHALL CONTROL RESTROOM DOORS. PROVIDE 2-GANG BOX WITH 3/4" CONDUIT TO MAIN COMPUTER ROOM OR NEAREST ACCESSIBLE CEILING SPACE. CONFIRM LOCATION WITH OWNER/ARCHITECT.
- PROVIDE (2) 1" FOR DATA AND AV. STUB 1" INTO AV DEVICE BACKBOX BEHIND DISPLAY AND 1" INTO ACCESSIBLE CEILING SPACE.
- 18"Wx4"H MESH CABLE TRAY MOUNTED ABOVE CEILING SUPPORTED FROM STRUCTURE FOR CABLEING DISTRIBUTION.
- PROVIDE (2) CAT 6 PLENUM-RATED CABLES FROM DEVICE TO MAIN COMPUTER ROOM (MCR). TERMINATE CABLES WITH BLUE RJ-45 JACKS IN SURFACE MOUNT BOX. TERMINATE CABLES ON RACK-MOUNTED PATCH PANELS IN MCR.
- POKE-THRU DEVICE WITH 2" CONDUIT DOWN TO LEVEL 1. INSTALL POKE-THRU WITHIN BASE OF PRINTER CABINET WITH REMOVABLE ACCESS PANEL.
- VERIFY EXACT LOCATION AND TERMINATION REQUIREMENTS WITH ELEVATOR CONTRACTOR.
- ROUTE CABLEING IN BUILT-IN TROUGH FOR CABLE MANAGEMENT.
- IP CAMERA LOCATION. PROVIDE (1) CAT 6 PLENUM-RATED CABLE TO MAIN COMPUTER ROOM. TERMINATE CABLE WITH ORANGE RJ-45 JACK AT DEVICE END. TERMINATE CABLE ON RACK-MOUNTED PATCH PANEL IN MCR.
- OVERHEAD PAGING SPEAKER. PROVIDE 3/4" CONDUIT TO MAIN COMPUTER ROOM. NEAREST ACCESSIBLE CEILING SPACE OR ADJACENT SPEAKER IN SAME PAGING ZONE.
- PROVIDE (4) 4" CONDUITS WITHIN NEW WALL ROUTED FROM FIRST FLOOR ACCESSIBLE CEILING SPACE TO CABLE TRAY FOR HORIZONTAL CABLEING DISTRIBUTION.
- CABLEING WALL FEED POINT. PROVIDE 5"SQ DEEP J-BOX WITH 2-GANG RING, 2-GANG FACEPLATE WITH 1" RUBBER GROMMET. PROVIDE 1-1/4" CONDUIT WITHIN WALL AND STUB ABOVE LADDER TRAYS IN MCR.
- PROVIDE WIREMOLD ENTRANCE END FITTING WITH 1-1/4" TO ACCESSIBLE CEILING. SEE DETAIL 4 ON THIS SHEET FOR REQUIREMENTS.
- INSTALL DEVICE IN SURFACE MOUNT INTERFACE BOX.
- ROUTE CABLEING IN MODULAR FURNITURE CHANNEL.
- (1) NEW 4" AND (3) EXISTING 4" CONDUIT SLEEVES FROM MCR ON LEVEL 3 STUBBED DOWN TO ACCESSIBLE CEILING SPACE ON LEVEL 2.
- INSTALL DEVICE(S) IN MULTI-SERVICE RECESSED POKE-THRU.
- EXTEND 1" FOR AV FROM FLOOR BOX TO JUNCTION BOX AND 1" FOR DATA FROM FLOOR BOX TO NEAREST ACCESSIBLE CEILING SPACE.
- INSTALL AV DEVICES, CABLEING AND EQUIPMENT PER REQUIREMENTS ON SHEETS T0.09 & T0.10.
- ROUTE CABLEING IN ACCESSIBLE CEILING SPACE ON FLOOR BELOW.
- INSTALL CARD READER IN MULLION. PROVIDE 3/4" TO CEILING.

REVISIONS

CONSTRUCTION DOCUMENTS

Salas O'Brien
8025 Research Drive
Irvine, CA 92618
Project No. 2022-05-09



LOS ANGELES COUNTY PUBLIC WORKS
HUNTINGTON PARK LIBRARY
6518 MILES AVE
HUNTINGTON PARK, CA 90255



LA COUNTY
LIBRARY

NAC

NAC NO: 161-23025
DRAWN: AC
CHECKED: BS
DATE: 07/15/2025

TECHNOLOGY
BASEMENT AND
LEVEL 1 PLANS

T3.11

SHEET NOTES

- REFERENCE SHEET T0.01 FOR SYMBOL DEFINITIONS, REFERENCES, ABBREVIATIONS AND DRAWING INDEX.
- REFERENCE SHEET T0.02 FOR GENERAL NOTES AND SPECIFICATIONS.
- ALL EXPOSED LOW VOLTAGE CONDUITS SHALL BE PAINTED TO MATCH SURROUNDING FINISHES. COORDINATE WORK WITH ARCHITECT/DISTRICT.
- PROVIDE CONDUITS WITH PULL TAPE/LINE WITH FIVE (5) FEET OF ADDITIONAL PULL TAPE COILED AT EACH END.
- CONDUIT BEND RADII SHALL BE A MINIMUM OF SIX (6) TIMES THE INTERNAL DIAMETER FOR CONDUITS 2" AND UNDER AND TEN (10) TIMES THE INTERNAL DIAMETER FOR CONDUITS GREATER THAN 2".
- CONDUITS AND SLEEVES PROTRUDING THROUGH FLOOR SHALL TERMINATE MINIMUM 4" ABOVE FINISHED FLOOR. REFERENCE SPECIFICATIONS FOR ADDITIONAL REQUIREMENTS.
- ALL CONDUIT PENETRATIONS INTO THE BUILDING SHALL BE SEALED WITH MECHANICAL SEALS OR PLUGS TO PREVENT THE INFILTRATION OF GAS AND/OR WATER.
- PROVIDE LABEL AND IDENTIFICATION FOR EACH CONDUIT AND PULL BOX PER OWNER STANDARDS. CONDUITS SHALL BE TAGGED WITH ROOM/SPACE/LOCATION AT BOTH ENDS AND LENGTH OF CONDUIT RUN.
- PENETRATIONS THROUGH FIRE-RATED WALLS SHALL BE PROTECTED WITH AN APPROVED FIRE STOP SYSTEM EQUAL TO OR GREATER THAN THE RATING OF THE WALL BEING PENETRATED.
- ALL DEVICES MOUNTED BACK-TO-BACK ON COMMON WALLS SHALL BE INSTALLED IN SEPARATE BOXES AND OFFSET 24" MINIMUM OR PROVIDED WITH PUTTY OR ANOTHER APPROVED SOUND PROOF BACKING.
- WHEN EXPOSED CEILING OR OPEN GRID CONDITIONS EXIST, CONTRACTOR SHALL INSTALL LOW VOLTAGE CABLES IN CONDUIT SUPPORTED INDEPENDENTLY FROM STRUCTURE ABOVE. EXPOSED CABLEING IN OPEN TYPE CEILING APPLICATIONS INSTALLED ON D-RINGS, J-HOOKS OR SIMILAR APPARATUS WILL NOT BE ACCEPTED UNLESS APPROVED IN WRITING BY ARCHITECT/ENGINEER PRIOR TO BEGINNING WORK. CONTRACTOR SHALL INCLUDE AN ALLOWANCE IN HIS BASE BID FOR THE INSTALLATION OF LOW VOLTAGE CABLES IN OPEN CEILINGS AS DESCRIBED.
- EXPOSED CABLES/CONDUCTORS INSTALLED IN A PLENUM SPACE SHALL BE LISTED FOR SUCH ENVIRONMENT AND INSTALLATION SHALL CONFORM TO NEC, OR CEC WHERE ADOPTED, ARTICLE 300.22(C).

KEYNOTES

- WIRELESS ACCESS POINT DEVICE. PROVIDE (2) CAT 6 PLENUM-RATED CABLES, BLUE JACKET. TERMINATE CABLES WITH CAT 6 RJ-45 ORANGE JACKS ON BOTH ENDS. CONFIRM EXACT LOCATION WITH OWNER/ARCHITECT.
- INSTALLED DEVICE IN WIREMOLD V4000 DIVIDED SURFACE METAL RACEWAY. COORDINATE INSTALLATION WITH POWER RECEPTACLE.
- DATA OUTLET INSTALLED IN MULTI-SERVICE RECESSED FLOOR BOX.
- ROUTE CONDUIT UNDERGROUND AND UP THROUGH WALL CAVITY.
- PROVIDE 4-GANG 4" STI EZ-PATH SLEEVES.
- INSTALL JUNCTION BOX WITHIN CASEWORK. COORDINATE EXACT LOCATION WITH CASEWORK INSTALLER/MANUFACTURER.
- PROVIDE SEPARATE DEDICATED MAGNETIC DOOR CONTACT FOR EACH ACCESS CONTROL SYSTEM AND INTRUSION DETECTION AND ALARM SYSTEM. THE ACCESS CONTROL DOOR CONTACTS SHALL CONNECT TO ACCESS CONTROLLER TO RESET DOOR LOCKING DEVICE AT THE DOOR WHEN OPENED.
- PROVIDE WALL PENETRATIONS WITH (4) 3" C SLEEVES ABOVE CEILING.
- PROVIDE WALL PENETRATIONS WITH (4) 1" C SLEEVES ABOVE CEILING.
- PEOPLE COUNTER SENSOR. COORDINATE EXACT LOCATION WITH OWNER/ARCHITECT PRIOR TO ROUGH-IN.
- MODULAR FURNITURE DEVICE. INSTALL DEVICE IN MODULAR FURNITURE CHANNEL.
- SYNCHRONIZED WIRED ANALOG CLOCK. PROVIDE (1) CAT 6 PLENUM-RATED CABLE FROM DEVICE TO MAIN COMPUTER ROOM (MCR). TERMINATE CABLE WITH CAT 6 ORANGE RJ-45 JACK. PROVIDE CAT 6 RJ-45 SPLITTER TO DAISY-CHAIN CLOCKS FROM FIRST CLOCK UP TO LAST CLOCK AND TO MASTER CLOCK CONTROLLER LOCATED IN MCR.
- PEOPLE COUNTING SENSOR MOUNTED TO CEILING. PROVIDE (2) CAT 6 PLENUM-RATED CABLES WITH BLUE OUTER JACKETS. TERMINATE CABLES WITH CAT 6 ORANGE RJ-45 JACKS ON BOTH ENDS (SENSOR AND PATCH PANEL IN MCR). CONFIRM EXACT LOCATION WITH OWNER.
- VIDEO INTERCOM STATION WITH DOOR RELEASE RELAY. PROVIDE CAT 6 PLENUM RATED CABLE TO BASE STATION AT CIRCULATION DESK. CONFIRM EXACT LOCATION WITH OWNER/ARCHITECT.
- VIDEO INTERCOM BASE STATION. ALL VIDEO INTERCOM STATIONS SHALL CONNECT TO BASE STATION. CONFIRM EXACT LOCATION WITH OWNER/ARCHITECT.
- INSTALL CEILING-MOUNTED INTRUSION ALARM SIREN AT LOCATION INDICATED. CONFIRM REQUIREMENTS IN OTHER AREAS WITH OWNER/ARCHITECT.
- DEVICE ABOVE COUNTER. COORDINATE INSTALLATION WITH POWER.
- INSTALL DEVICE AT +44" AFF FOR WALL-MOUNTED PHONE. PROVIDE PANDUIT FACEPLATE PART #KWP6Y.
- DOOR RELEASE SWITCH. PROVIDE 3/4" CONDUIT FROM ELECTRIFIED DOOR STRIKE TO MAIN COMPUTER ROOM OR NEAREST ACCESSIBLE CEILING SPACE.
- DOOR RELEASE BUTTON SHALL CONTROL RESTROOM DOORS. PROVIDE 2-GANG BOX WITH 3/4" CONDUIT TO MAIN COMPUTER ROOM OR NEAREST ACCESSIBLE CEILING SPACE. CONFIRM LOCATION WITH OWNER/ARCHITECT.
- PROVIDE (2) 1" C FOR DATA AND AV. STUB 1" C INTO AV DEVICE BACKBOX BEHIND DISPLAY AND 1" C INTO ACCESSIBLE CEILING SPACE.
- 18"Wx4"H MESH CABLE TRAY MOUNTED ABOVE CEILING SUPPORTED FROM STRUCTURE FOR CABLEING DISTRIBUTION.
- PROVIDE (2) CAT 6 PLENUM-RATED CABLES FROM DEVICE TO MAIN COMPUTER ROOM (MCR). TERMINATE CABLES WITH BLUE RJ-45 JACKS IN SURFACE MOUNT BOX. TERMINATE CABLES ON RACK-MOUNTED PATCH PANELS IN MCR.
- POKE-THRU DEVICE WITH 2" CONDUIT DOWN TO LEVEL 1. INSTALL POKE-THRU WITHIN BASE OF PRINTER CABINET WITH REMOVABLE ACCESS PANEL.
- VERIFY EXACT LOCATION AND TERMINATION REQUIREMENTS WITH ELEVATOR CONTRACTOR.
- ROUTE CABLEING IN BUILT-IN TROUGH FOR CABLE MANAGEMENT.
- IP CAMERA LOCATION. PROVIDE (1) CAT 6 PLENUM-RATED CABLE TO MAIN COMPUTER ROOM. TERMINATE CABLE WITH ORANGE RJ-45 JACK AT DEVICE END. TERMINATE CABLE ON RACK-MOUNTED PATCH PANEL IN MCR.
- OVERHEAD PAGING SPEAKER. PROVIDE 3/4" CONDUIT TO MAIN COMPUTER ROOM, NEAREST ACCESSIBLE CEILING SPACE OR ADJACENT SPEAKER IN SAME PAGING ZONE.
- PROVIDE (4) 4" CONDUITS WITHIN NEW WALL ROUTED FROM FIRST FLOOR ACCESSIBLE CEILING SPACE TO CABLE TRAY FOR HORIZONTAL CABLEING DISTRIBUTION.
- CABLEING WALL FEED POINT. PROVIDE 5" SQ DEEP J-BOX WITH 2-GANG RING, 2-GANG FACEPLATE WITH 1" RUBBER GROMMET. PROVIDE 1-1/4" CONDUIT WITHIN WALL AND STUB ABOVE LADDER TRAYS IN MCR.
- PROVIDE WIREMOLD ENTRANCE END FITTING WITH 1-1/4" C TO ACCESSIBLE CEILING. SEE DETAIL 4 ON THIS SHEET FOR REQUIREMENTS.
- INSTALL DEVICE IN SURFACE MOUNT INTERFACE BOX.
- ROUTE CABLEING IN MODULAR FURNITURE CHANNEL.
- (1) NEW 4" AND (3) EXISTING 4" CONDUIT SLEEVES FROM MCR ON LEVEL 3 STUBBED DOWN TO ACCESSIBLE CEILING SPACE ON LEVEL 2.
- INSTALL DEVICE(S) IN MULTI-SERVICE RECESSED POKE-THRU.
- EXTEND 1" C FOR AV FROM FLOOR BOX TO JUNCTION BOX AND 1" C FOR DATA FROM FLOOR BOX TO NEAREST ACCESSIBLE CEILING SPACE.
- INSTALL AV DEVICES, CABLEING AND EQUIPMENT PER REQUIREMENTS ON SHEETS T0.09 & T0.10.
- ROUTE CABLEING IN ACCESSIBLE CEILING SPACE ON FLOOR BELOW.
- INSTALL CARD READER IN MULLION. PROVIDE 3/4" C TO CEILING.

NOTE
SYSTEMS LISTED BELOW ARE OWNER-FURNISHED OWNER-INSTALLED (OFO). THE SYSTEM DEVICES ARE SHOWN IN LIGHT LINE TYPE.
- INTRUSION DETECTION AND ALARM SYSTEM
- ACCESS CONTROL SYSTEM
- PUBLIC ADDRESS SYSTEM
- SYNCHRONIZED CLOCK SYSTEM
- CCTV SYSTEM

PAGING ZONES (EACH ZONE ON SEPARATE FEEDER CABLE TERMINATING IN THE MCR)
ZONE 1 - COMMUNITY MEETING ROOM
ZONE 2 - STUDY ROOMS
ZONE 3 - FIRST FLOOR PUBLIC AREAS / PUBLIC RESTROOMS / ELEVATOR / EXIT STAIRS
ZONE 4 - FIRST FLOOR STAFF WORK AREAS / LIBRARIAN OFFICES / STAFF LOUNGE / STAFF RESTROOMS
ZONE 5 - SECOND FLOOR PUBLIC AREAS / PUBLIC RESTROOMS
ZONE 6 - SECOND FLOOR STAFF WORK AREAS / LIBRARIAN OFFICES / STAFF RESTROOMS
ZONE 7 - THIRD FLOOR

TECHNOLOGY LEVEL 3 PLAN

SCALE
1/8"=1'-0"

2

KEYNOTES (CONT.)

- PROVIDE 8" CORE PENETRATION FOR INSTALLATION OF 8" MULTI-SERVICE RECESSED UNWIRED POKE-THRU, WIREMOLD EVOLUTION SERIES BATC20Y. INSTALL DEVICE(S) IN POKE-THRU.
- ROUTE 2" CONDUIT IN FLOOR BELOW FROM POKE-THRU TO NEAREST ACCESSIBLE CEILING SPACE FOR LOW VOLTAGE CABLEING. ROUTE CABLEING TO MCR. COORDINATE WORK WITH ARCHITECT AND STRUCTURAL ENGINEER.
- PROVIDE CONDUIT DOWN TO ACCESSIBLE CEILING SPACE ON FLOOR BELOW FOR DOOR RELEASE.

NOTE
SYSTEMS LISTED BELOW ARE OWNER-FURNISHED OWNER-INSTALLED (OFO). THE SYSTEM DEVICES ARE SHOWN IN LIGHT LINE TYPE.
- INTRUSION DETECTION AND ALARM SYSTEM
- ACCESS CONTROL SYSTEM
- PUBLIC ADDRESS SYSTEM
- SYNCHRONIZED CLOCK SYSTEM
- CCTV SYSTEM

PAGING ZONES (EACH ZONE ON SEPARATE FEEDER CABLE TERMINATING IN THE MCR)
ZONE 1 - COMMUNITY MEETING ROOM
ZONE 2 - STUDY ROOMS
ZONE 3 - FIRST FLOOR PUBLIC AREAS / PUBLIC RESTROOMS / ELEVATOR / EXIT STAIRS
ZONE 4 - FIRST FLOOR STAFF WORK AREAS / LIBRARIAN OFFICES / STAFF LOUNGE / STAFF RESTROOMS
ZONE 5 - SECOND FLOOR PUBLIC AREAS / PUBLIC RESTROOMS
ZONE 6 - SECOND FLOOR STAFF WORK AREAS / LIBRARIAN OFFICES / STAFF RESTROOMS
ZONE 7 - THIRD FLOOR

TECHNOLOGY LEVEL 2 PLAN

SCALE
1/8"=1'-0"

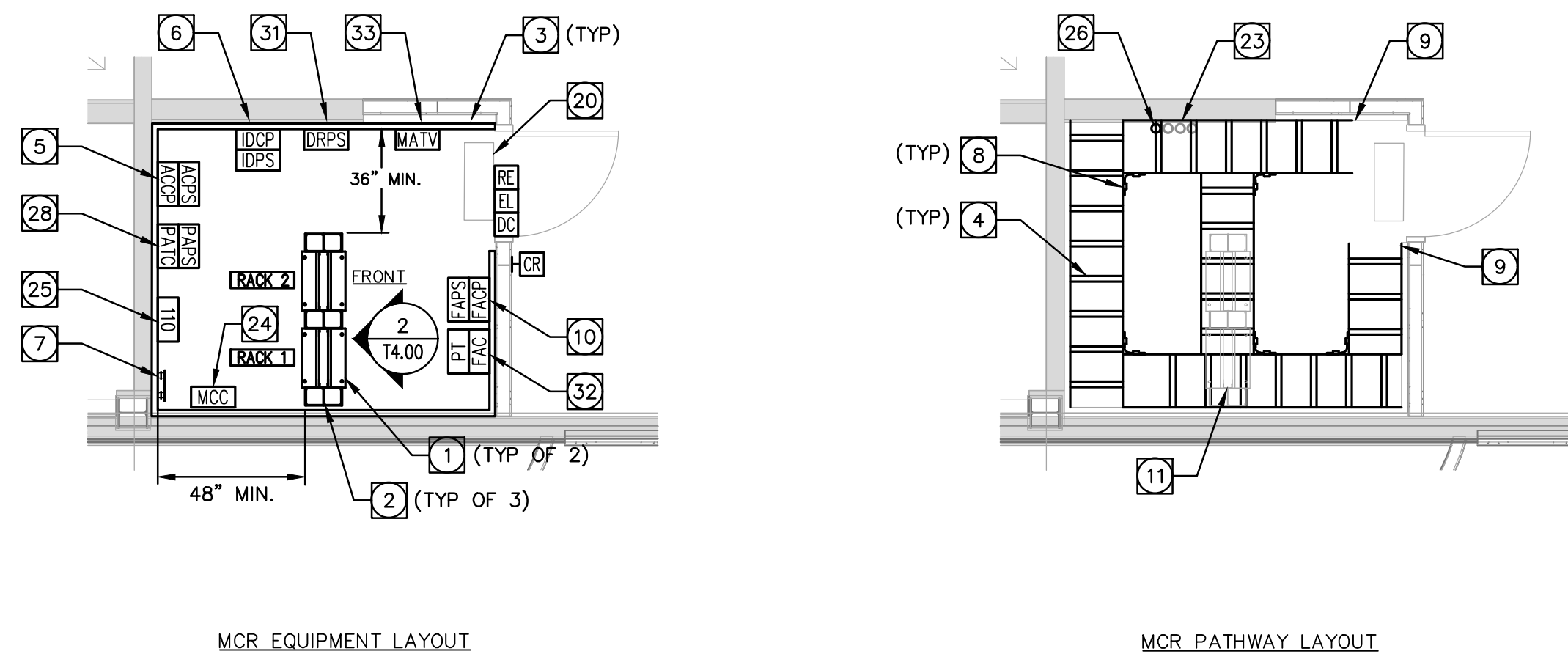
1

SHEET NOTES

- REFERENCE SHEET T0.01 FOR SYMBOL DEFINITIONS, REFERENCES, ABBREVIATIONS AND DRAWING INDEX.
- REFERENCE SHEET T0.02 FOR GENERAL NOTES AND SPECIFICATIONS.
- PENETRATIONS THRU FIRE RATED WALLS SHALL BE PROTECTED WITH AN APPROVED FIRE STOP SYSTEM EQUAL TO OR GREATER THAN THE RATING OF THE WALL BEING PENETRATED.
- WHEN EXPOSED CEILING OR OPEN GRID CONDITIONS EXIST, ALL LOW VOLTAGE CABLES SHALL BE:
 - INSTALLED IN EMT CONDUIT PATHWAYS OR
 - INSTALLED NEATLY IN CABLE MANAGEMENT OPEN BASKET OR LADDER TYPE WIREWAY SUPPORTED INDEPENDENTLY FROM STRUCTURE ABOVE.
- EXPOSED LOW VOLTAGE CABLING IN OPEN TYPE CEILING APPLICATIONS INSTALLED ON D-RINGS, J-HOOKS OR SIMILAR APPARATUS WILL NOT BE ACCEPTED UNLESS APPROVED IN WRITING BY ARCHITECT/ENGINEER PRIOR TO ANY ROUGH IN OR INSTALLATION. CONTRACTOR SHALL INCLUDE AN ALLOWANCE IN HIS BASE BID FOR THE INSTALLATION OF LOW VOLTAGE CABLES IN OPEN CEILINGS AS DESCRIBED.
- EXPOSED CABLE/CONDUCTORS INSTALLED IN A PLENUM SPACE SHALL BE LISTED FOR SUCH ENVIRONMENT AND INSTALLATION SHALL CONFORM TO NEC, OR CEC WHERE ADOPTED, ARTICLE 300.22(C).

KEYNOTES

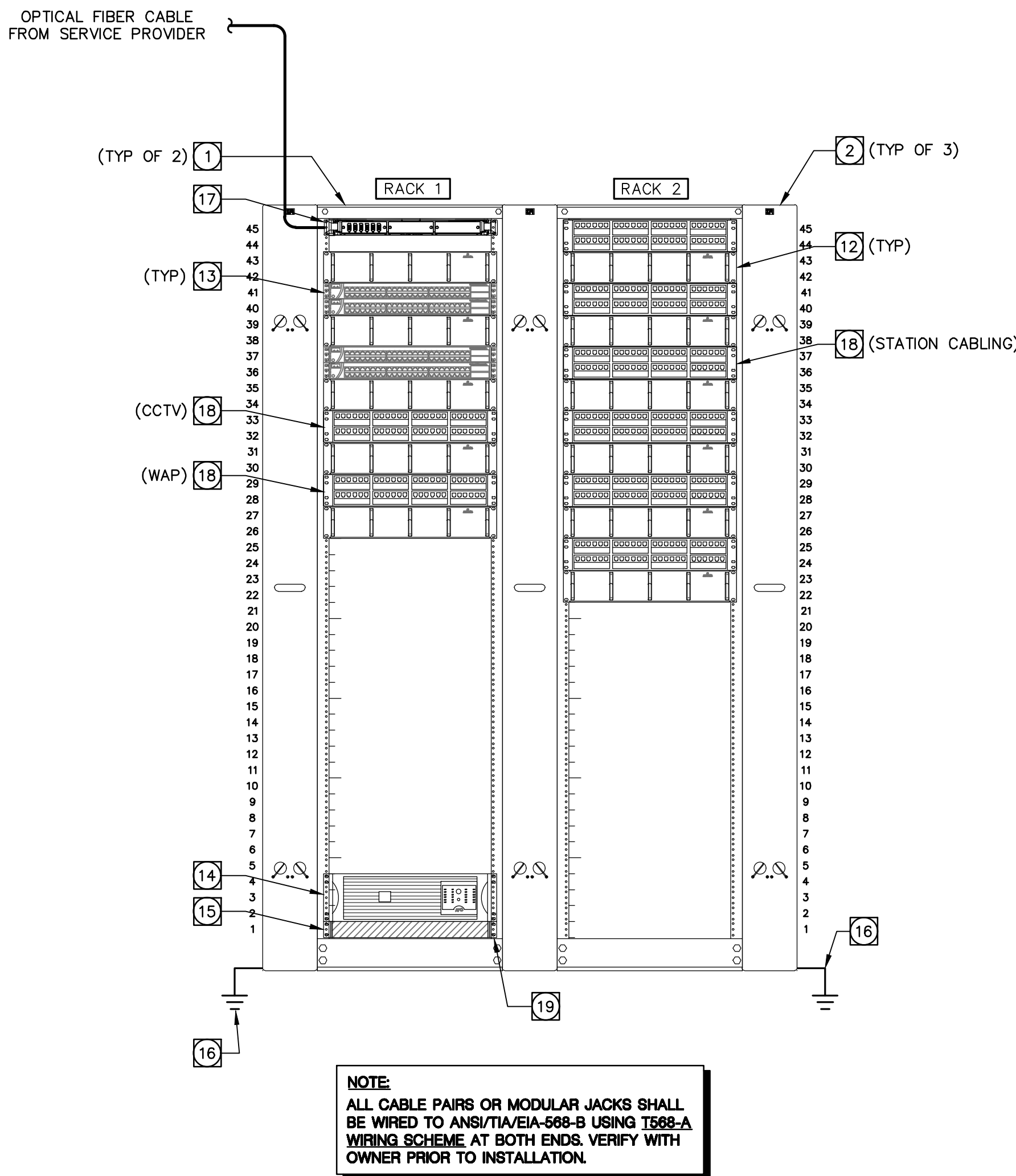
- 19"Wx7"H 2-POST EQUIPMENT RACK.
- 6"Wx7"H DOUBLE-SIDED VERTICAL CABLE MANAGER.
- 3/4"Dx8"H PLYWOOD BACKBOARD WITH (2) COATS OF WHITE FIRE-RETARDANT PAINT WALL-MOUNTED AT 6" AFF.
- 18"W OVERHEAD LADDER TRAY MOUNTED AT 7'-6" AFF.
- BACKBOARD SPACE FOR ACCESS CONTROL PANEL AND POWER SUPPLY.
- BACKBOARD SPACE FOR INTRUSION DETECTION CONTROL PANEL AND POWER SUPPLY.
- 10"x4" TELECOM GROUNDING BUSBAR (TGB) MOUNTED ON PLYWOOD BACKBOARD 12" BELOW LADDER TRAY.
- #6 AWG BONDING STRAP OR EQUIVALENT.
- STOP CABLE TRAY AT THIS LOCATION TO AVOID CONFLICT WITH AC UNIT.
- BACKBOARD SPACE FOR FIRE ALARM CONTROL PANEL AND POWER SUPPLY.
- PROVIDE 6" RACK ELEVATION KIT TO INSTALL LADDER TRAY AT 7'-6" AFF.
- 2-RU HORIZONTAL CABLE MANAGER.
- POE NETWORK SWITCH (OWNER-FURNISHED OWNER-INSTALLED)
- UPS (OWNER-FURNISHED CONTRACTOR-INSTALLED)
- 1-RU SUPPORT BRACKET.
- EQUIPMENT GROUND PER NEC AND EIA/TIA STANDARDS.
- 1-RU RACK MOUNT FIBER CABINET WITH (1) 6-DUPLEX LC OM3 MULTIMODE FIBER ADAPTER PANEL AND (2) BLANK PANELS.
- CAT 6 48-PORT PATCH PANEL.
- VERTICAL POWER STRIP MOUNTED TO REAR OF RACK USING STAND-OFF BRACKETS.
- AC UNIT MOUNTED ABOVE DOOR SHOWN FOR REFERENCE ONLY. SEE MECHANICAL DRAWINGS FOR REQUIREMENTS.
- CONDUIT SLEEVES MOUNTED ABOVE CEILING. SEE FLOOR PLAN FOR ADDITIONAL INFORMATION.
- LOCATION OF PAGING AMPLIFIER AND 110 BLOCKS FOR PAGING SPEAKER CABLING TERMINATION.
- (3) EXISTING 4" CONDUIT SLEEVES DOWN TO 2ND FLOOR ACCESSIBLE CEILING. EXISTING CONDUITS TO REMAIN, PROTECT FROM DAMAGE DURING CONSTRUCTION.
- WALL-MOUNTED MASTER CLOCK CONTROLLER FOR CONTINUALLY SYNCHRONIZING AND CONTROLLING WIRED ANALOG CLOCKS.
- 100-PAIR 110 BLOCK.
- PROVIDE CORE DRILL PENETRATION FOR INSTALLATION OF (1) 4" CONDUIT SLEEVE DOWN TO 2ND FLOOR ACCESSIBLE CEILING SPACE.
- CONDUIT SLEEVES DOWN TO ACCESSIBLE CEILING SPACE ON FLOOR BELOW. REFERENCE FLOOR PLAN FOR EXACT LOCATIONS, SIZES AND QUANTITIES.
- BACKBOARD SPACE FOR PA SYSTEM WIRING TERMINATION BLOCKS AND EQUIPMENT.
- CONDUITS FOR DEMARK EXTENSION. SEE FLOOR PLAN FOR ADDITIONAL INFORMATION.
- MASTER CLOCK CONTROLLER AND POWER SUPPLY.
- POWER SUPPLY LOCATION FOR RESTROOM DOOR RELEASE SYSTEM.
- BACKBOARD SPACE FOR FIRE ALARM COMMUNICATOR, KEYPAD AND POWER TRANSFORMER.
- BACKBOARD SPACE RESERVED FOR MATV SYSTEM.



ENLARGED MAIN COMPUTER ROOM (MCR) LAYOUTS

SCALE
1/4"=1'-0"

1



- NOTES:
- PROVIDE COMPLETE RACK ASSEMBLY, INCLUDING ANCHOR BOLTS, CLAMPS, RACK AND MISCELLANEOUS INSTALLATION HARDWARE. EQUIP RACK AS SHOWN. PROVIDE PATCH PANELS, VERTICAL AND HORIZONTAL CABLE MANAGEMENT PANELS, ETC., UON.
 - GROUND EQUIPMENT TO NEAREST NEC RECOGNIZED GROUNDING ELECTRODE SUBSYSTEM WITH A DEDICATED #6 AWG COPPER, STRANDED, GREEN SHEATH GROUNDING CONDUCTOR.
 - ASSEMBLE EQUIPMENT RACK SO RACK UNIT 1 IS NEAREST TO THE FLOOR AND NUMBERS INCREASE VERTICALLY.

MAIN COMPUTER ROOM RACK ELEVATION DETAIL

SCALE
NTS

2