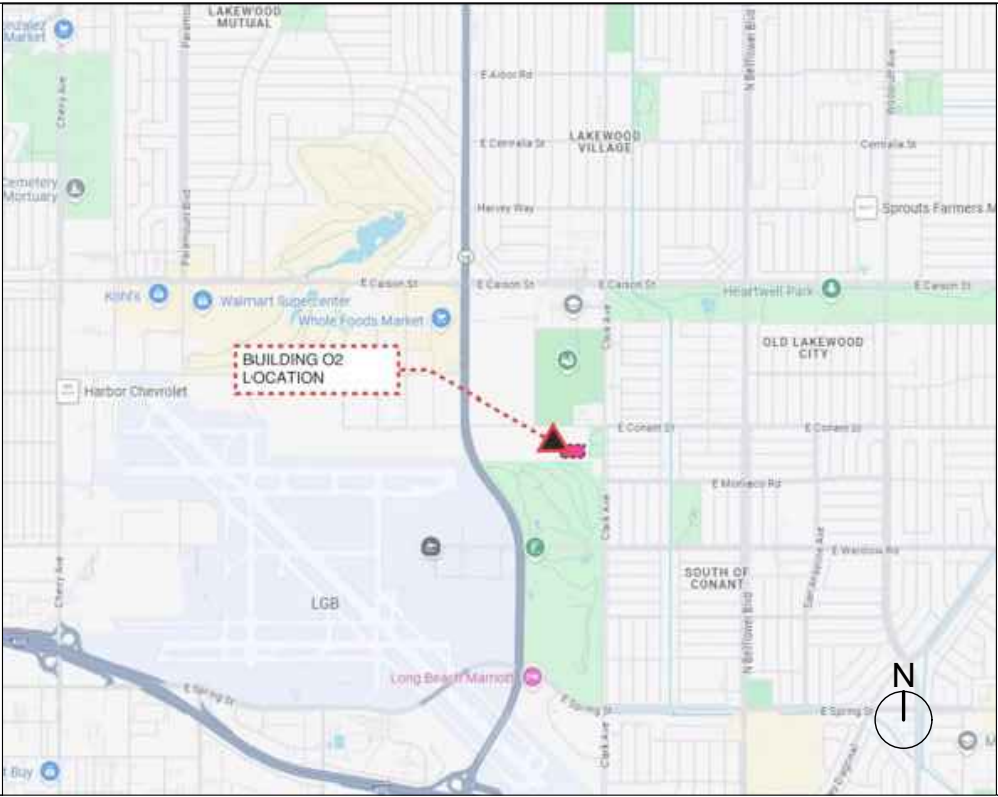



LONG BEACH CITY COLLEGE

LIBERAL ARTS CAMPUS
4901 EAST CARSON STREET
LONG BEACH, CA 90806

LBCC - BUILDING O2 REFRESH



| SHEET INDEX | | PROJECT DIRECTORY | VACINITY MAP | APPLICABLE CODES: |
|--|--|---|---|---|
| <div>GENERAL</div> <div>G0.00</div> <div>G0.01</div> | <div>COVER SHEET</div> <div>GENERAL NOTES</div> | <div>OWNER</div> <div>LONG BEACH COMMUNITY COLLEGE</div> <div>LIBERAL ARTS CAMPUS</div> <div>4901 EAST CARSON ST.</div> <div>LONG BEACH, CA. 90808</div> <div>(O) 562.938.4111</div> <div>BOND MANAGEMENT TEAM</div> <div>CORDOBA CORPORATION</div> <div>4900 E CONANT ST.</div> <div>LONG BEACH, CA. 90808</div> <div>(O) 562.938.5007</div> |  | |
| <div>ARCHITECTURE</div> <div>AD0.01</div> <div>AD1.01</div> <div>AD1.02</div> <div>A1.01</div> <div>A1.02</div> <div>A1.03</div> <div>A1.04</div> <div>A1.05</div> <div>A1.06</div> <div>A1.07</div> <div>A2.01</div> <div>A4.01</div> <div>A4.02</div> <div>A5.01</div> <div>A6.01</div> <div>A6.02</div> | <div>DEMOLITION SITE PLAN</div> <div>DEMOLITION FIRST LEVEL PLAN</div> <div>DEMOLITION SECOND LEVEL PLAN</div> <div>NEW SITE PLAN</div> <div>NEW FIRST LEVEL PLAN</div> <div>NEW SECOND LEVEL PLAN</div> <div>FIRST LEVEL FURNITURE PLAN</div> <div>SECOND LEVEL FURNITURE PLAN</div> <div>FIRST LEVEL FINISH PLAN</div> <div>SECOND LEVEL FINISH PLAN</div> <div>EXTERIOR ELEVATION</div> <div>ENLARGE PLANS / INTERIOR ELEV.</div> <div>INTERIOR ELEVATIONS</div> <div>DETAILS</div> <div>FINISH SCHEDULE</div> <div>FINISH SCHEDULE</div> | | <div>CAMPUS MAP</div>  | <div>SCOPE OF PROJECT</div> <div>PATCH AND PAINT THROUGHOUT 1ST AND 2ND FLOOR</div> <div>OFFICE AND COMMON AREAS, DOOR TRIMS AND</div> <div>RAILINGS INCLUDED. UNLESS NOTED OTHERWISE.</div> <div>- INSTALL NEW LOBBY FLOORING.</div> <div>- INSTALL NEW RECEPTION CASEWORK.</div> <div>- INSTALL NEW STAIR FLOORING.</div> <div>- INSTALL NEW CARPET THROUGHOUT OFFICE</div> <div>SUITES & CONFERENCE ROOMS.</div> |

REVISIONS

| | | | | | |
|-----|------|--|--|--|--|
| NO. | DATE | | | | |
| | | | | | |
| | | | | | |
| | | | | | |
| | | | | | |

BUILDING O2 REFRESH PROJECT

LAC BUILDING O2

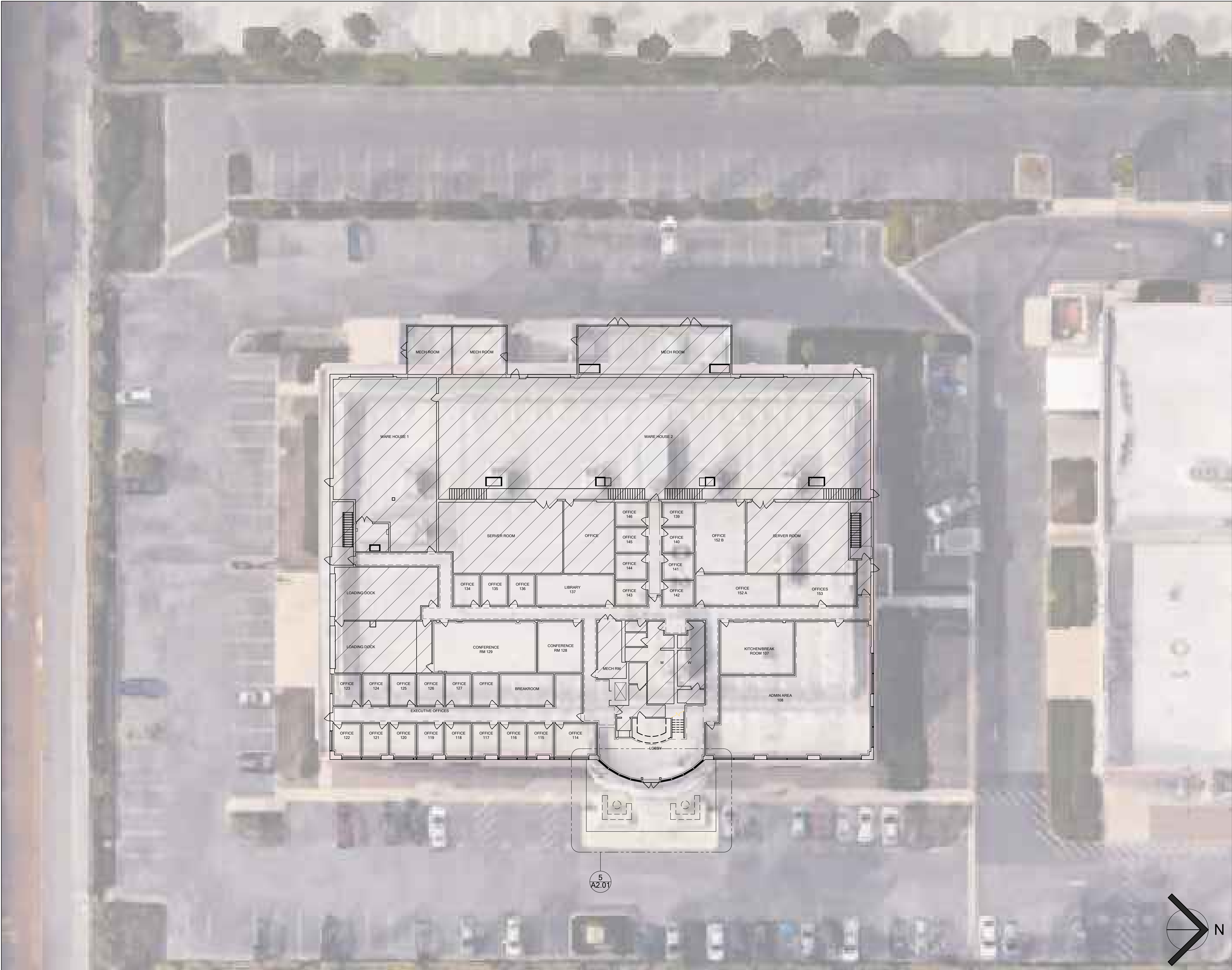
LOCATION:

DATE: 02/26/2025

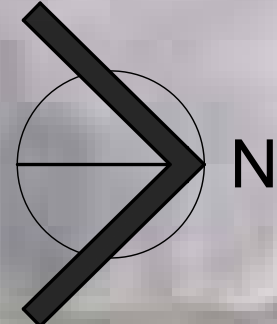
DRAWN BY: --

CHECKED BY: --

G0.00



5
A2.01

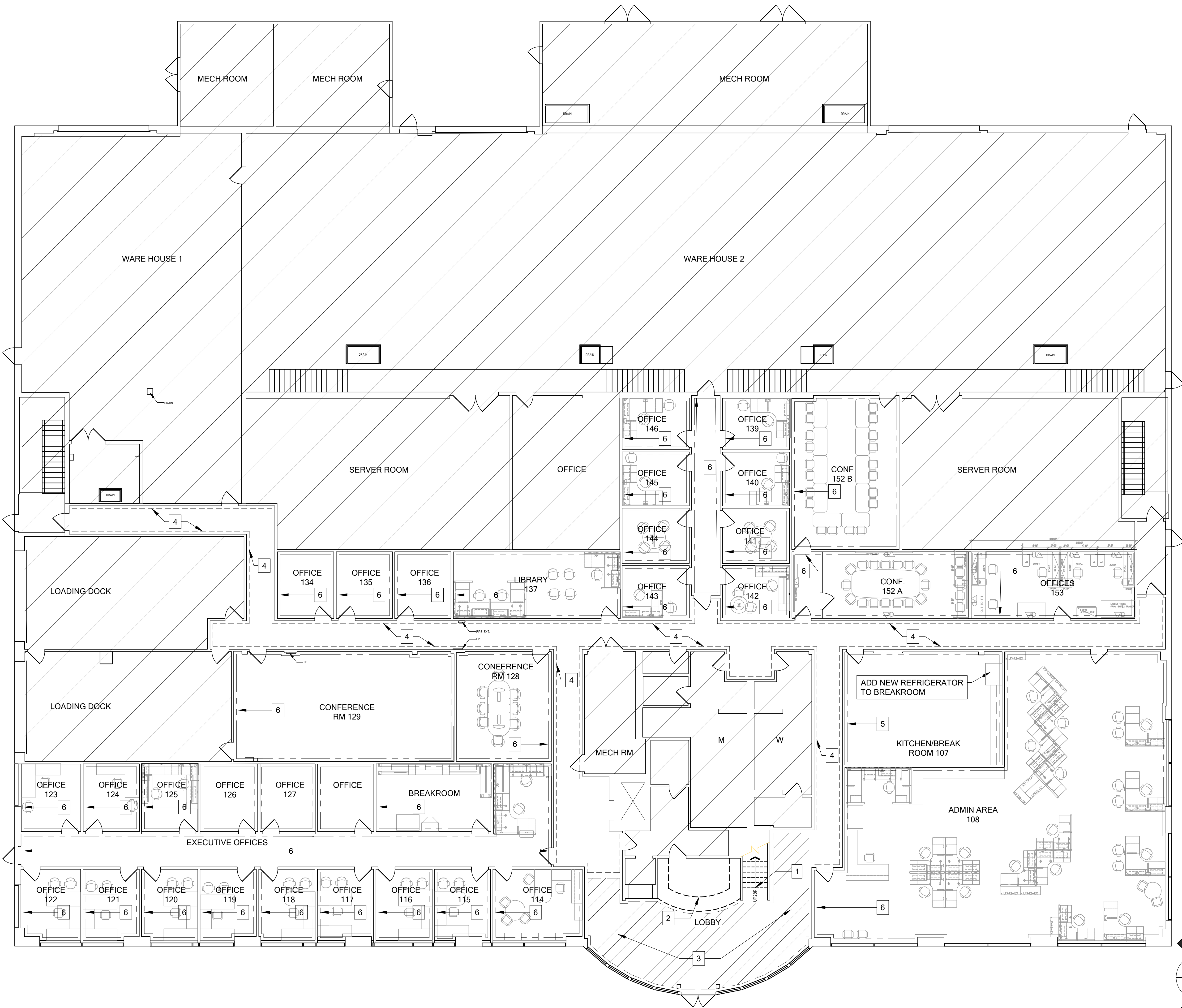


KEYNOTES

LEGEND

 NOT PART OF SCOPE OF WORK

| REVISIONS | | | | |
|-----------------------------|------|--|--|--|
| NO. | DATE | | | |
| | | | | |
| | | | | |
| | | | | |
| | | | | |
| | | | | |
| | | | | |
| BUILDING O2 REFRESH PROJECT | | | | |
| LAC BUILDING O2 | | | | |
| LOCATION: | | | | |
| DATE: 02/26/2025 | | | | |
| DRAWN BY: -- | | | | |
| CHECKED BY: -- | | | | |
| | | | | |
| AD0.01 | | | | |



KEYNOTES

- 1. REMOVE EXISTING BLACK RUBBER STAIR FINISH. CLEAN AND PREPARE FOR NEW WOOD STAIR TREADS. PREPARE RISE FACE FOR NEW PAINT.
- 2. DEMO EXISTING RECEPTION DESK. CLEAN AND PREPARE FOR NEW MODULAR DESK EQUIPMENT.
- 3. REMOVE SLATE FLOORING TILE, CLEAN AND PREPARE FOR NEW LUXURY VINYL TILE (LVT).
- 4. REMOVE EXISTING WAINSCOTING, WALLPAPER, BASEBOARD AND CHAIR RAIL MOULDING FROM CORRIDOR. CLEAN AND PREPARE FOR NEW PAINT AND NEW BASEBOARD. VCT FLOORING IN CORRIDOR TO REMAIN IN PLACE, UNLESS NOTED OTHERWISE
- 5. REMOVE EXISTING BASEBOARD, VCT FLOORING TO REMAIN PROTECT IN PLACE. PREPARE WALLS FOR NEW PAINT AND NEW BASEBOARD
- 6. REMOVE EXISTING CARPET AND BASEBOARD FROM OFFICE SPACE. PREPARE WALLS FOR NEW PAINT, NEW CARPET AND NEW BASEBOARD. CARPET INSTALL MAY REQUIRE LIFT SYSTEM TO INSTALL CARPET. VERIFY PER DEMO PLAN

NOTES

- 1. ALL INTERIOR DOORS AND INTERIOR WINDOWS FRAMES TO BE STRIPPED. PRIME AND PREPARE FOR NEW PAINT.
- 2. FURNITURE WITHIN ROOMS TO REMAIN UNLESS NOTED OTHERWISE.

LEGEND

- [Hatched Box] NOT PART OF SCOPE OF WORK
- [Hatched Box] LIMIT OF SLATE FLOORING FINISH

| REVIEWS | | | | | |
|---------|--|--|--|--|--|
| | | | | | |
| | | | | | |
| | | | | | |
| DATE | | | | | |
| NO. | | | | | |

BUILDING O2 REFRESH PROJECT

LAC BUILDING O2

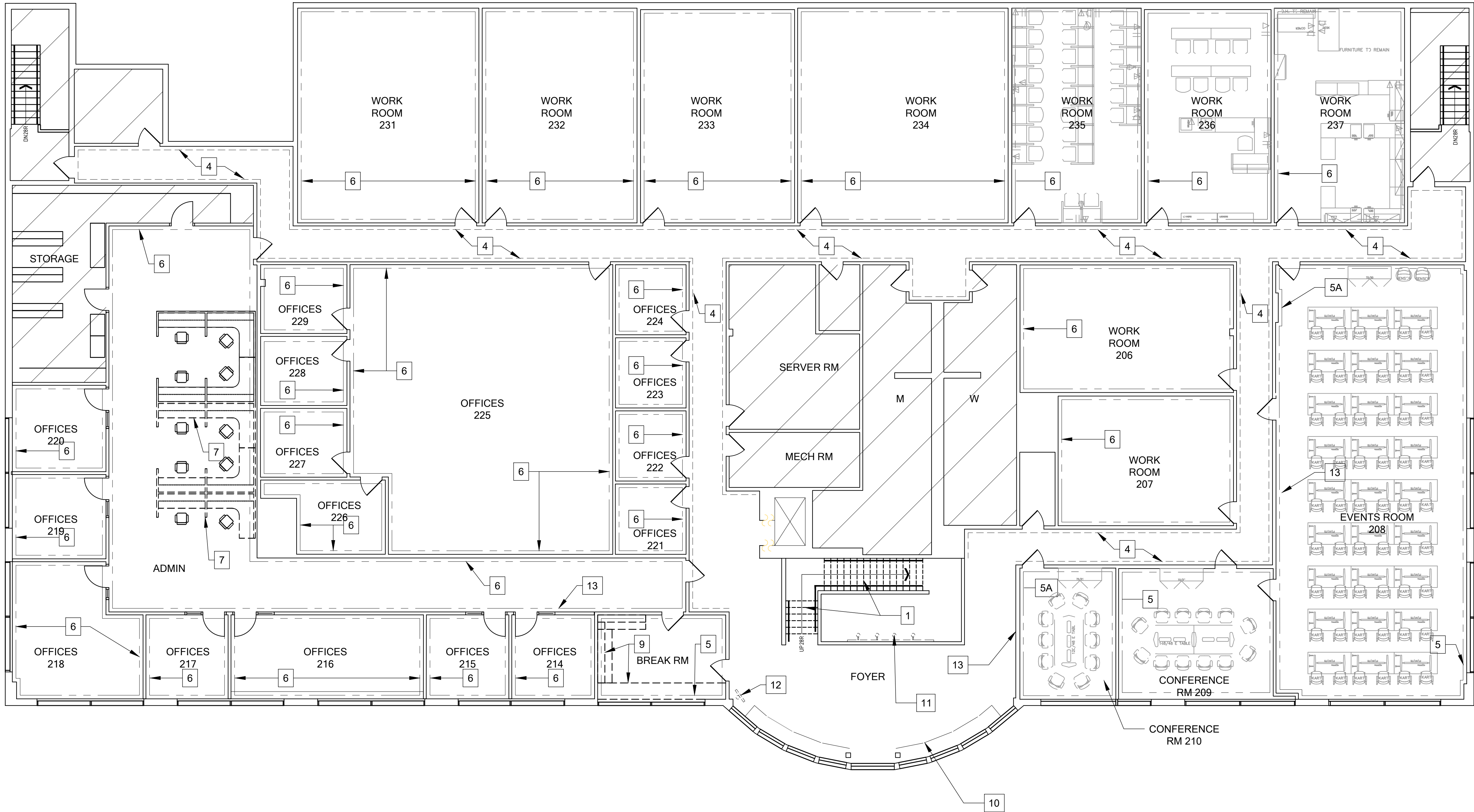
LOCATION:

DATE: 02/26/2025

DRAWN BY: --

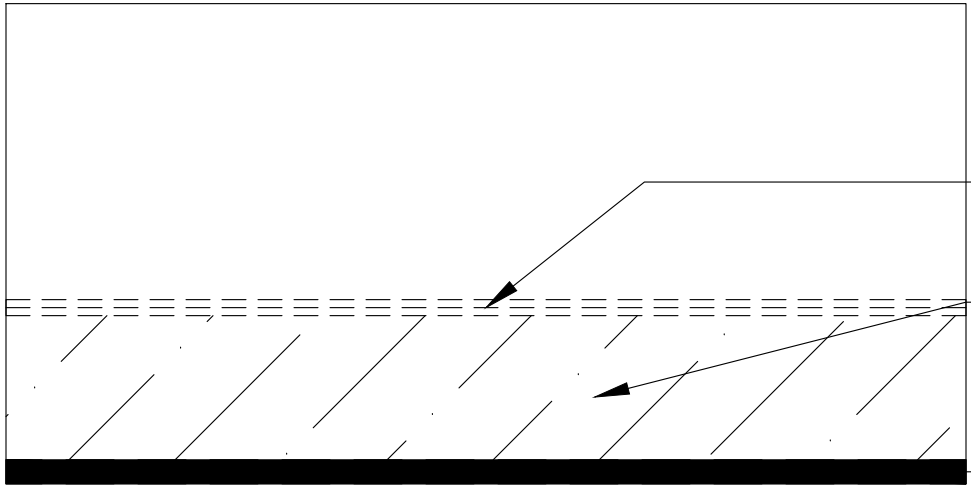
CHECKED BY: --

AD1.01



DEMOLITION SECOND LEVEL PLAN
SCALE: 1/8" = 1'-0"

1



TYPICAL CORRIDOR ELEVATION DETAIL
SCALE: 1/4" = 1'-0"

2

KEYNOTES

1. REMOVE EXISTING BLACK RUBBER STAIR FINISH, CLEAN AND PREPARE FOR NEW WOOD STAIR TREADS. PREPARE RISE FACE FOR NEW PAINT.
2. (NOT USED IN THIS PLAN)
3. (NOT USED IN THIS PLAN)
4. REMOVE EXISTING WAINSCOTING, WALLPAPER, BASEBOARD AND CHAIR RAIL MOULDING FROM CORRIDOR. CLEAN AND PREPARE FOR NEW PAINT AND NEW BASEBOARD. VCT FLOORING IN CORRIDOR TO REMAIN IN PLACE, UNLESS NOTED OTHERWISE
5. REMOVE EXISTING BASEBOARD, AND VCT FLOORING. PREPARE FLOOR FOR NEW LVT. PREPARE WALLS FOR NEW PAINT AND NEW BASEBOARD
- 5A. REMOVE ACT AND BASEBOARDS, PREPARE FLOOR FOR NEW CARPET
6. REMOVE EXISTING CARPET AND BASEBOARD FROM OFFICE SPACE. CARPET INSTALL MAY REQUIRE LIFT SYSTEM TO INSTALL CARPET. VERIFY PER ROOM. PREPARE WALLS FOR NEW PAINT, NEW CARPET AND NEW BASEBOARD.
7. REMOVED MODULAR WORKSTATIONS.
8. (NOT USED IN PLAN)
9. REMOVE EXISTING STOVE, DISHWASHER, AND CASEWORK. REPLACE W/ NEW CASEWORK, SINK, REFRIGERATOR AND MICROWAVE. REMOVE VCT PREPARE FLOOR FOR NEW LVT
10. REMOVE EXISTING BUILT-IN TABLES AND REPLACE WITH SMALL SEATING GROUPS.
11. REMOVE EXISTING LIGHT FIXTURE, AND PREPARE FOR NEW LIGHT FIXTURE.
12. REMOVE EXISTING TV AND TV RACK, PATCH AND PAINT IF REQUIRED.
13. REMOVE AND PRESERVE ART FROM EXISTING WALL. COORDINATE WITH BMT AND DISTRICT STORAGE.

NOTES

1. ALL INTERIOR DOORS AND INTERIOR WINDOWS FRAMES TO BE STRIPPED, PRIME AND PREPARE FOR NEW PAINT.
2. FURNITURE WITHIN ROOMS TO REMAIN UNLESS NOTED OTHERWISE.

LEGEND

 NOT PART OF SCOPE OF WORK

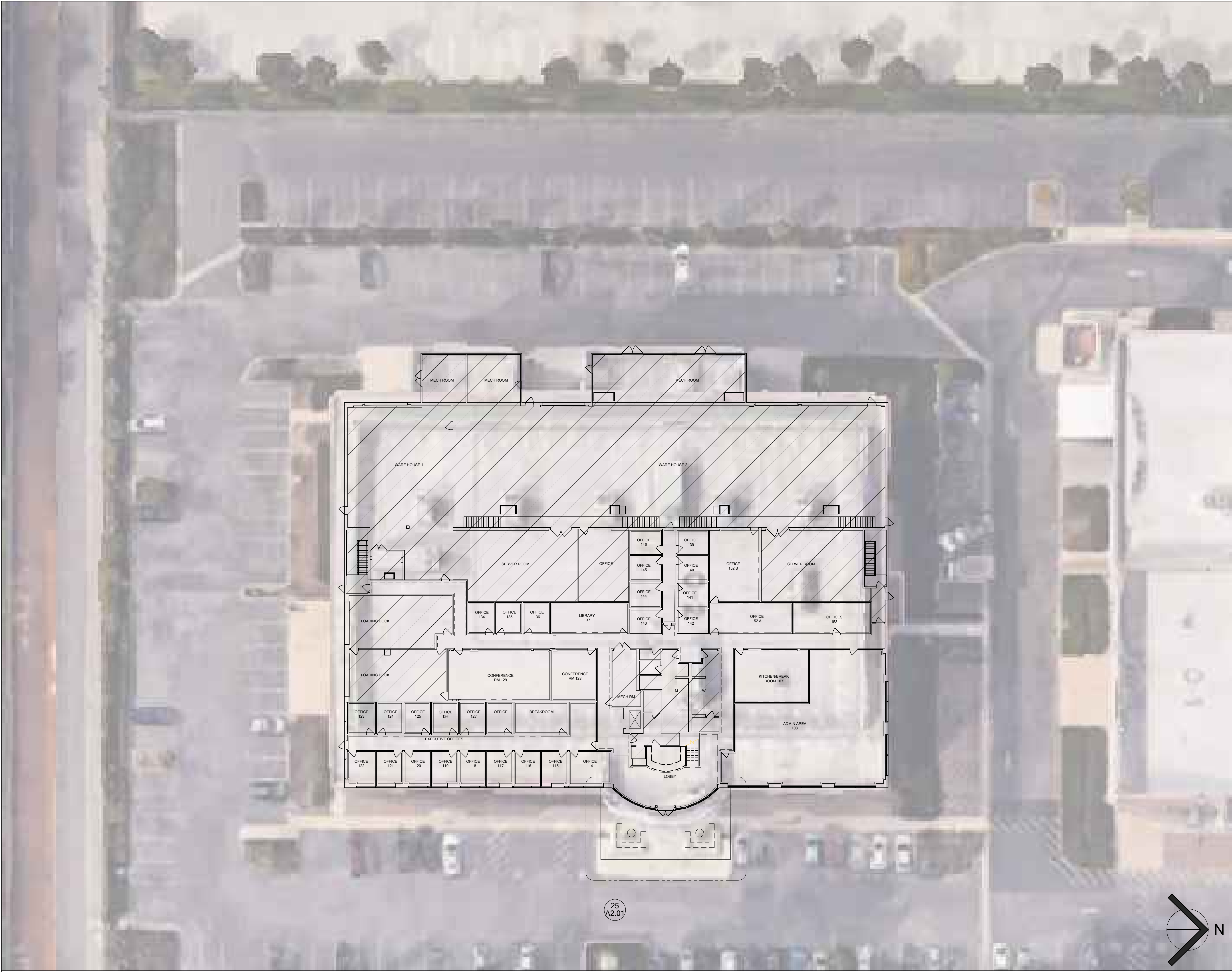
| REVISIONS | NO. | DATE | | | |
|-----------|-----|------|--|--|--|
| | | | | | |
| | | | | | |
| | | | | | |
| | | | | | |

| | | | | | |
|--|--|--|--|--|--|
| | | | | | |
| | | | | | |
| | | | | | |
| | | | | | |
| | | | | | |

| | |
|-----------------------------|-----------------|
| BUILDING O2 REFRESH PROJECT | LAC BUILDING O2 |
| | |
| LOCATION: | |

| | |
|-------------|------------|
| DATE: | 02/26/2025 |
| DRAWN BY: | -- |
| CHECKED BY: | -- |

| |
|--------|
| AD1.02 |
|--------|



KEYNOTES

| REVISIONS | | | | |
|-----------|------|--|--|--|
| NO. | DATE | | | |
| | | | | |
| | | | | |
| | | | | |
| | | | | |

BUILDING O2 REFRESH PROJECT

LAC BUILDING O2

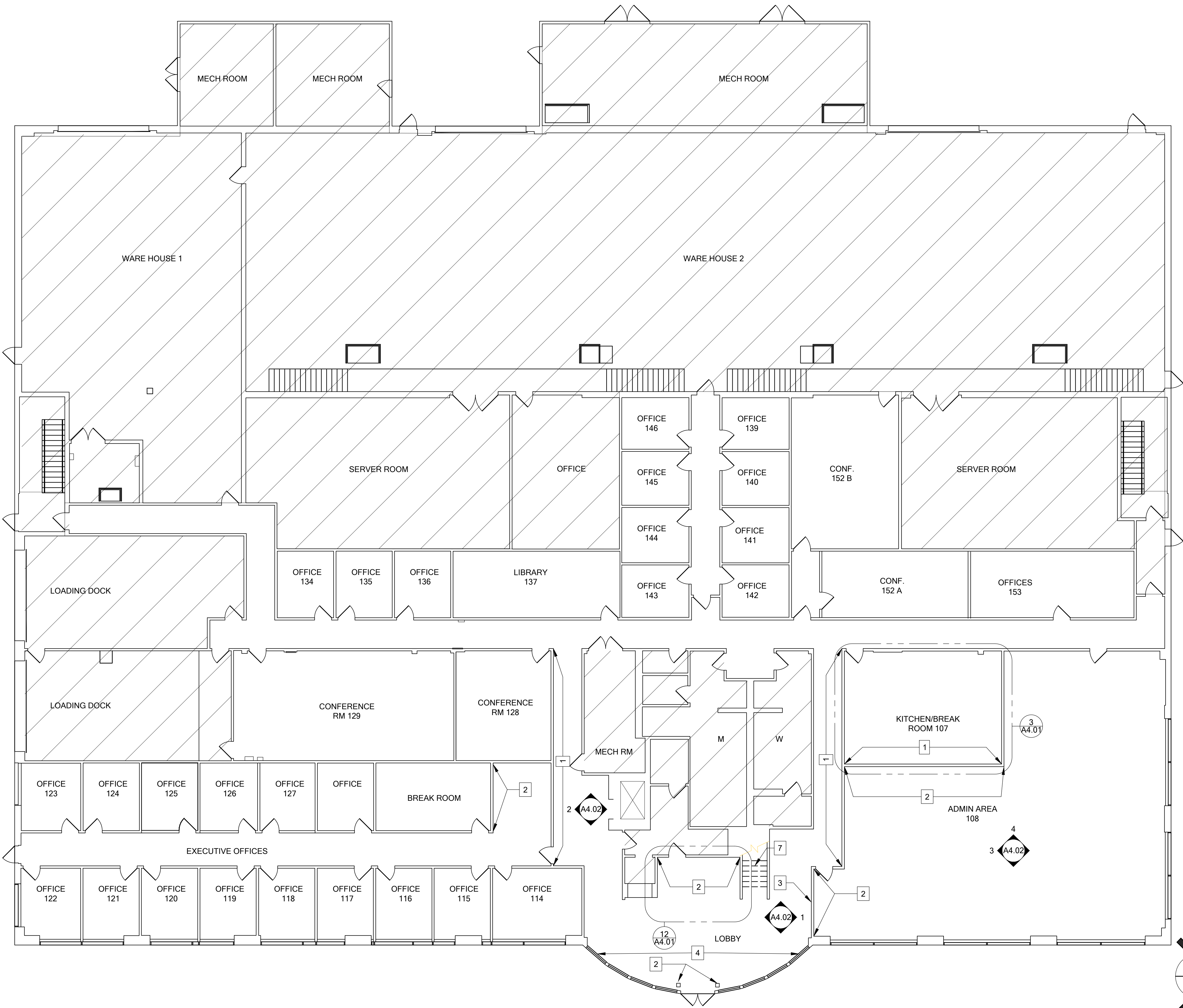
LOCATION:

| | |
|-------------|------------|
| DATE: | 02/26/2025 |
| DRAWN BY: | -- |
| CHECKED BY: | -- |

A1.01

LEGEND

NOT PART OF SCOPE OF WORK



KEYNOTES

- 1. LOCATION OF NEW WALL WRAP GRAPHIC.
- 2. NEW WALL ACCENT COLOR.
- 3. LOCATION OF NEW DIGITAL SIGNAGE.
- 4. NEW WINDOW GRAPHICS.
- 5. (NOT USED IN PLAN)
- 6. (NOT USED IN PLAN)
- 7. NEW WOOD TREADS AND PAINTED STAIR RISERS

LEGEND

NOT PART OF SCOPE OF WORK

LIMIT OF SLATE FLOORING FINISH

INTERIOR ELEVATION REFERENCE

A4.00

4

A4.01

12

A4.02

2

A4.02

3

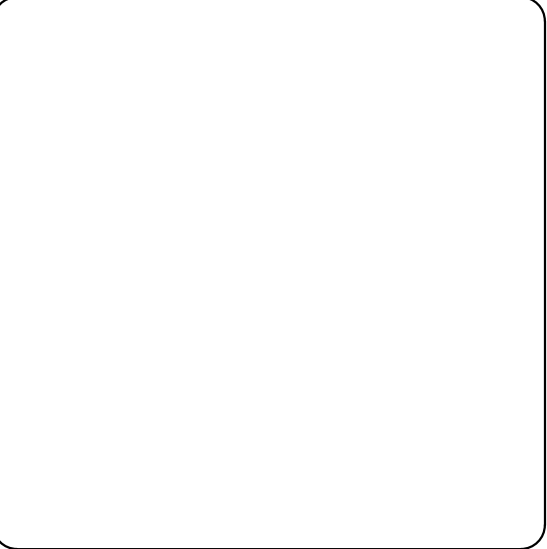
A4.02

4

ELEVATION NUMBER

SHEET NUMBER

| REVISIONS | | | |
|-----------|------|--|--|
| NO. | DATE | | |
| | | | |
| | | | |
| | | | |



BUILDING O2 REFRESH PROJECT

LAC BUILDING O2

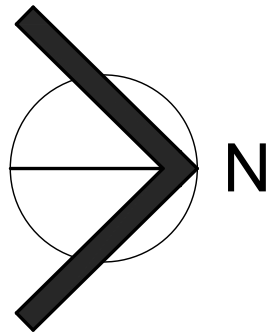
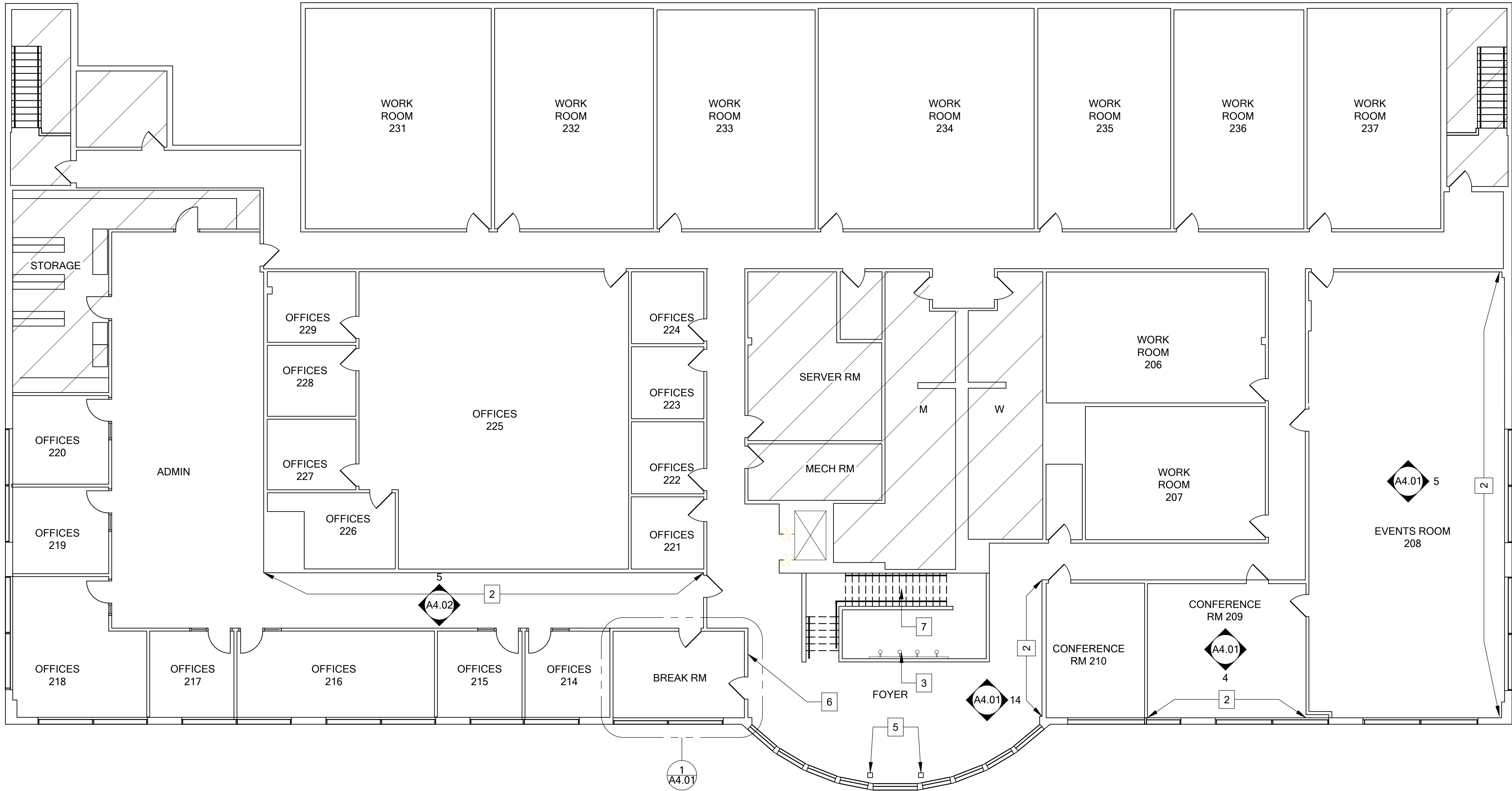
LOCATION:

DATE: 02/26/2025

DRAWN BY: --

CHECKED BY: --

A1.02



NEW SECOND LEVEL PLAN
SCALE: 1/8" = 1'-0"

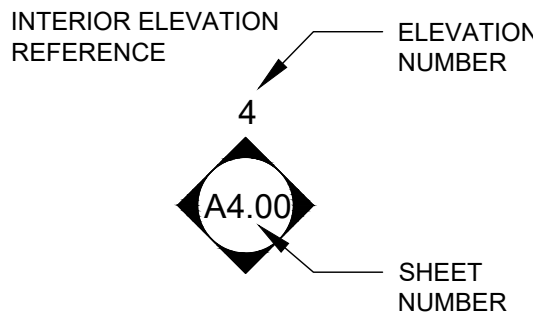
1

KEYNOTES

- 1. LOCATION OF NEW WALL WRAP GRAPHIC.
- 2. NEW WALL ACCENT COLOR.
- 3. NEW LIGHT FIXTURE, TBD.
- 4. (NOT USED IN PLAN).
- 5. ACCENT COLOR FOR COLUMNS.
- 6. NEW DIRECTORY SIGN
- 7. NEW WOOD TREADS AND PAINTED STAIR RISERS

LEGEND

NOT PART OF SCOPE OF WORK



| NO. | REVISIONS | | | |
|-----|-----------|--|--|--|
| | DATE | | | |
| | | | | |



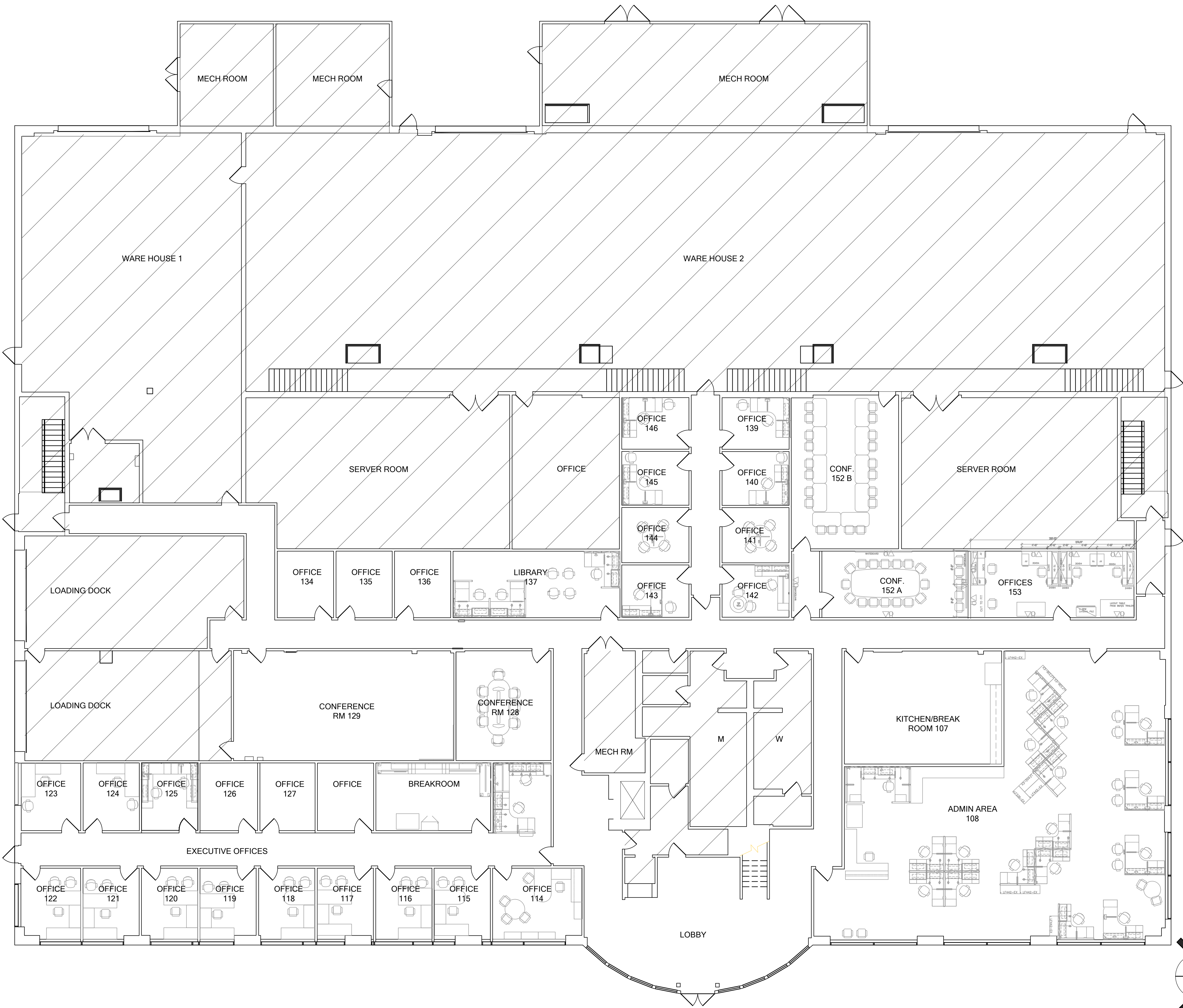
BUILDING O2 REFRESH PROJECT

LAC BUILDING O2

LOCATION:

| | |
|-------------|------------|
| DATE: | 02/26/2025 |
| DRAWN BY: | -- |
| CHECKED BY: | -- |

A1.03

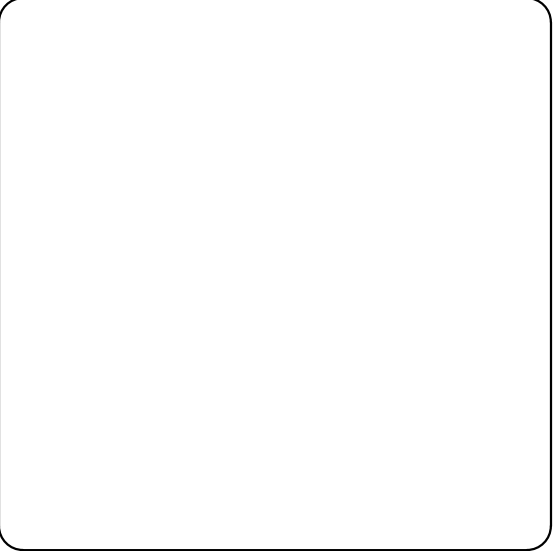
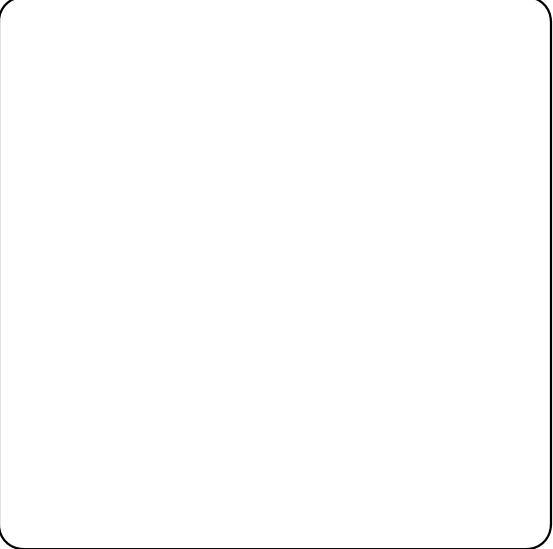


KEYNOTES

LEGEND

NOT PART OF SCOPE OF WORK

| REVISIONS | | | | |
|-----------|------|--|--|--|
| NO. | DATE | | | |
| | | | | |
| | | | | |
| | | | | |



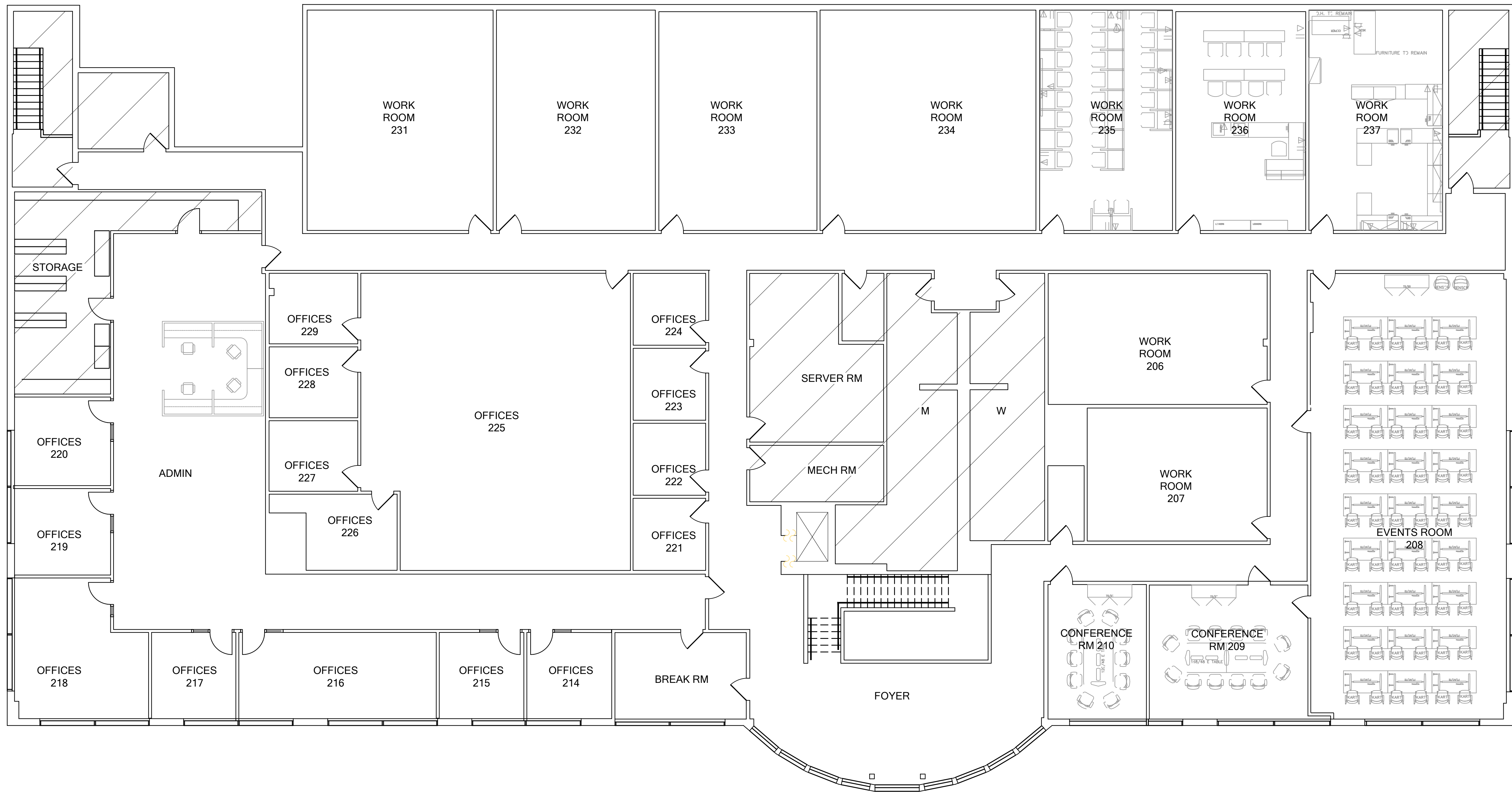
BUILDING O2 REFRESH PROJECT

LAC BUILDING O2

LOCATION:

| | |
|-------------|------------|
| DATE: | 02/26/2025 |
| DRAWN BY: | -- |
| CHECKED BY: | -- |

A1.04



KEYNOTES

LEGEND

NOT PART OF SCOPE OF WORK

REVISIONS

DATE

NO.

BUILDING O2 REFRESH PROJECT

LAC BUILDING O2

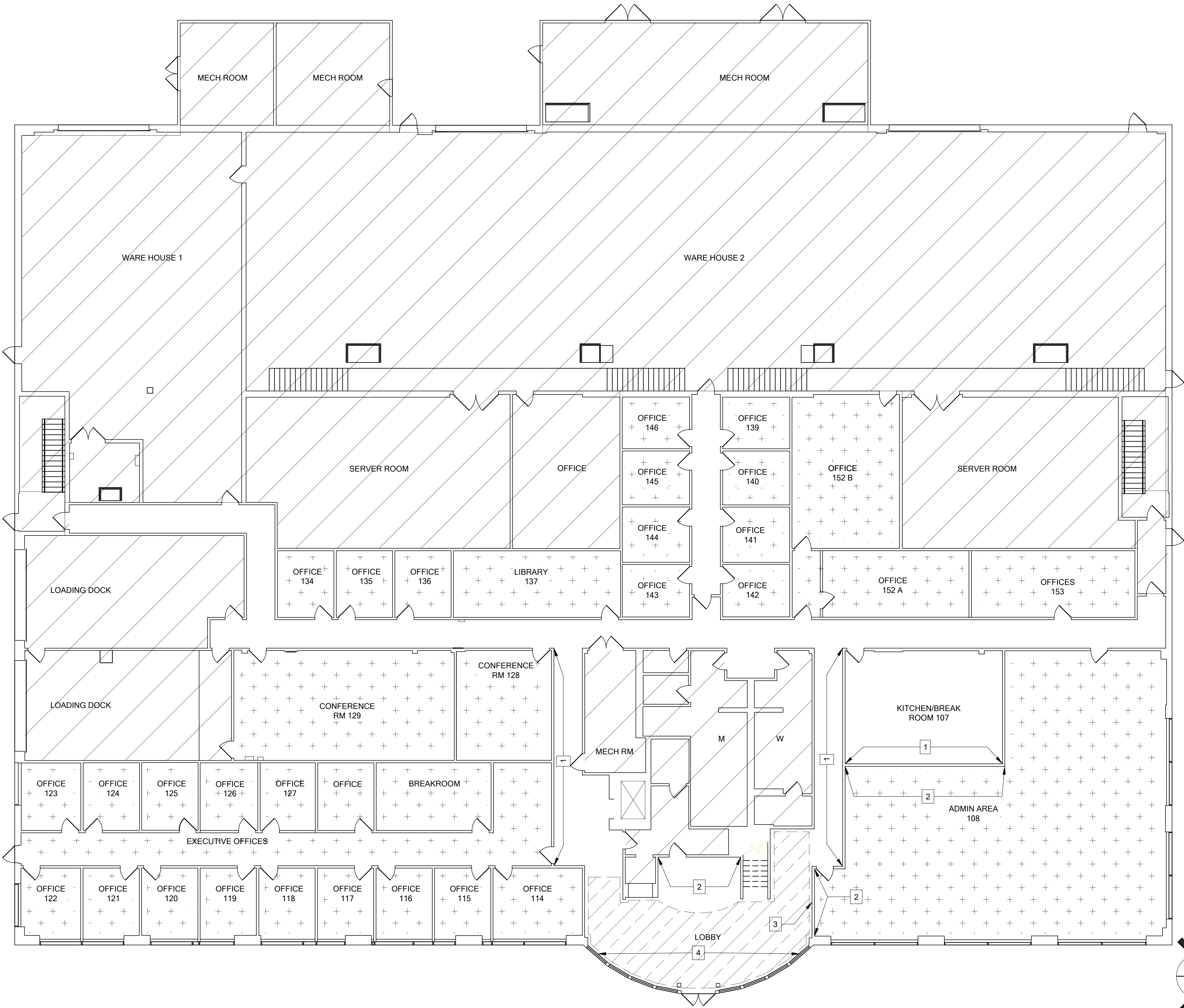
LOCATION:

DATE: 02/26/2025

DRAWN BY: --

CHECKED BY: --

A1.05



KEYNOTES

- 1. LOCATION OF NEW WALL WRAP GRAPHIC.
- 2. NEW WALL ACCENT COLOR.
- 3. LOCATION OF NEW DIGITAL SIGNAGE.
- 4. NEW WINDOW GRAPHICS.

NOTE

NOTE: PATTERNS INDICATED ON THE FINISH PLANS AND FINISH LEGEND DO NOT CONVEY FINAL LAYOUT OR DESIRED FINISH PATTERN AND ARE SOLELY USED TO DISTINGUISH BETWEEN FINISHES AND ARE SHOWN FOR PURPOSES OF CLARITY.

LEGEND

NOTE: PATTERNS INDICATED ON THE FINISH PLANS AND FINISH LEGEND DO NOT CONVEY FINAL LAYOUT OR DESIRED FINISH PATTERN AND ARE SOLELY USED TO DISTINGUISH BETWEEN FINISHES AND ARE SHOWN FOR PURPOSES OF CLARITY.

- NOT PART OF SCOPE OF WORK
- NEW CARPET TILE
- NEW VCT FLOORING

| REVISIONS | | | | |
|-----------|------|--|--|--|
| NO. | DATE | | | |
| | | | | |
| | | | | |

BUILDING O2 REFRESH PROJECT

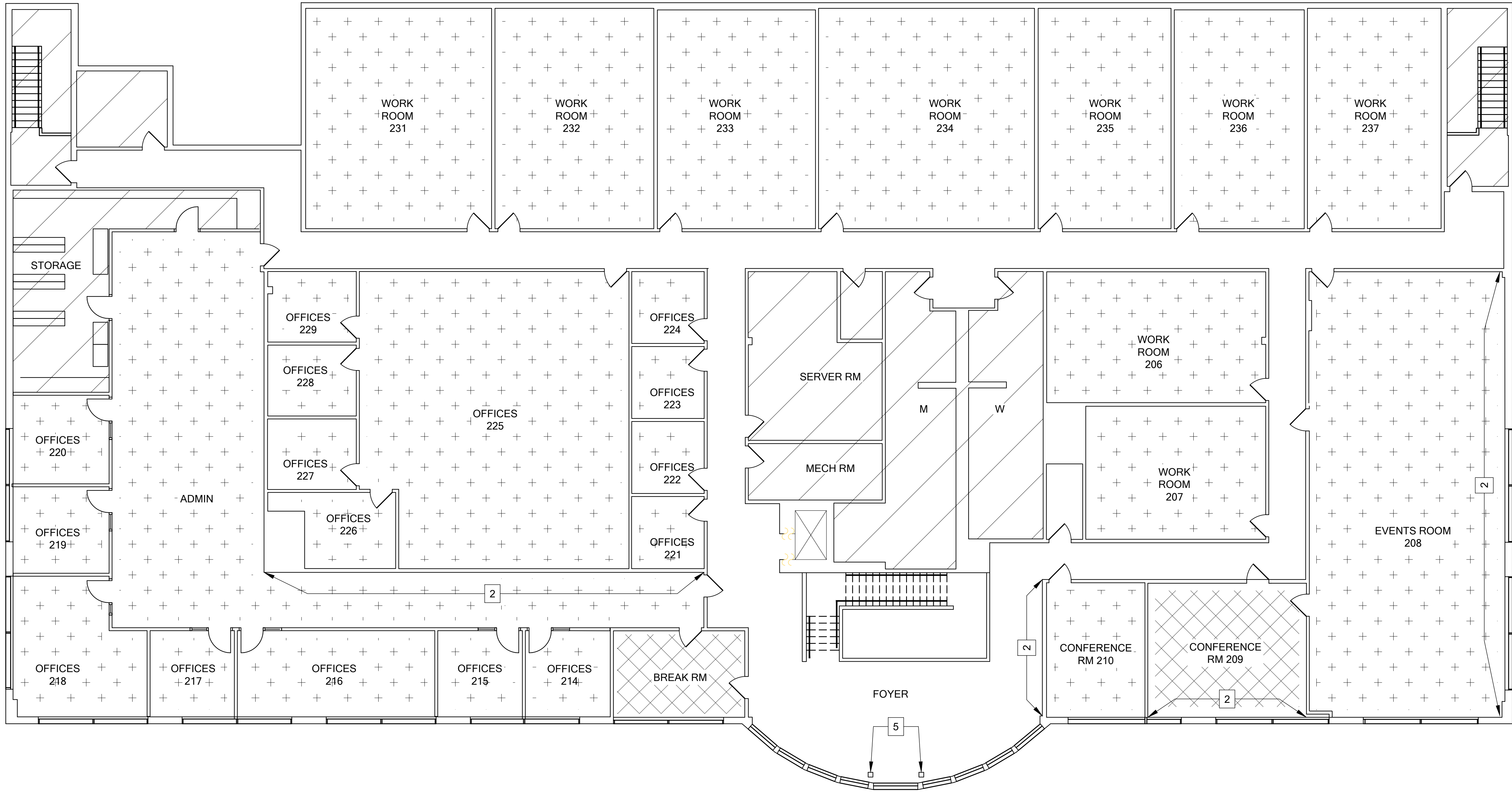
LAC BUILDING O2

LOCATION:

DATE: 02/26/2025

DRAWN BY: --

CHECKED BY: --

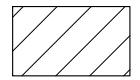
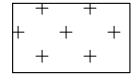



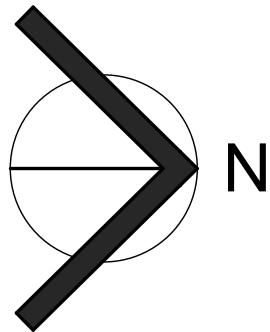
KEYNOTES

- 1. (NOT USED IN PLAN).
- 2. NEW WALL, ACCENT COLOR.
- 3. (NOT USED IN PLAN).
- 4. (NOT USED IN PLAN).
- 5. ACCENT COLOR FOR COLUMNS.
- 6. (NOT USED IN PLAN)

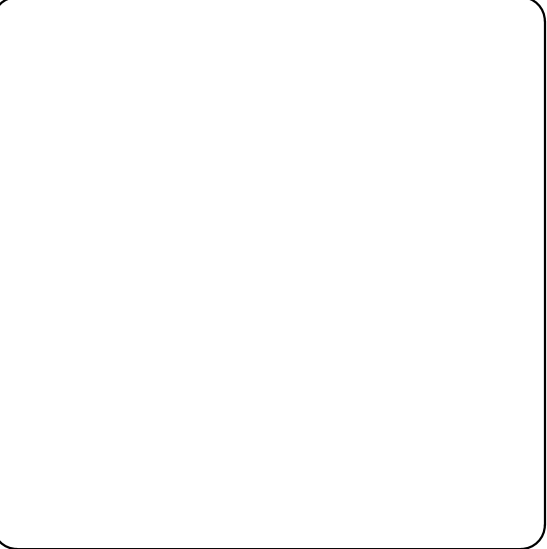
LEGEND

NOTE:
PATTERNS INDICATED ON THE FINISH
PLANS AND FINISH LEGEND DO NOT
CONVEY FINAL LAYOUT OR DESIRED FINISH
PATTERN AND ARE SOLELY USED TO
DISTINGUISH BETWEEN FINISHES AND ARE
SHOWN FOR PURPOSES OF CLARITY.

-  NOT PART OF SCOPE OF WORK
-  NEW CARPET TILE
-  NEW LVT FLOORING



| REVISIONS | | | | |
|-----------|------|--|--|--|
| NO. | DATE | | | |
| | | | | |
| | | | | |
| | | | | |



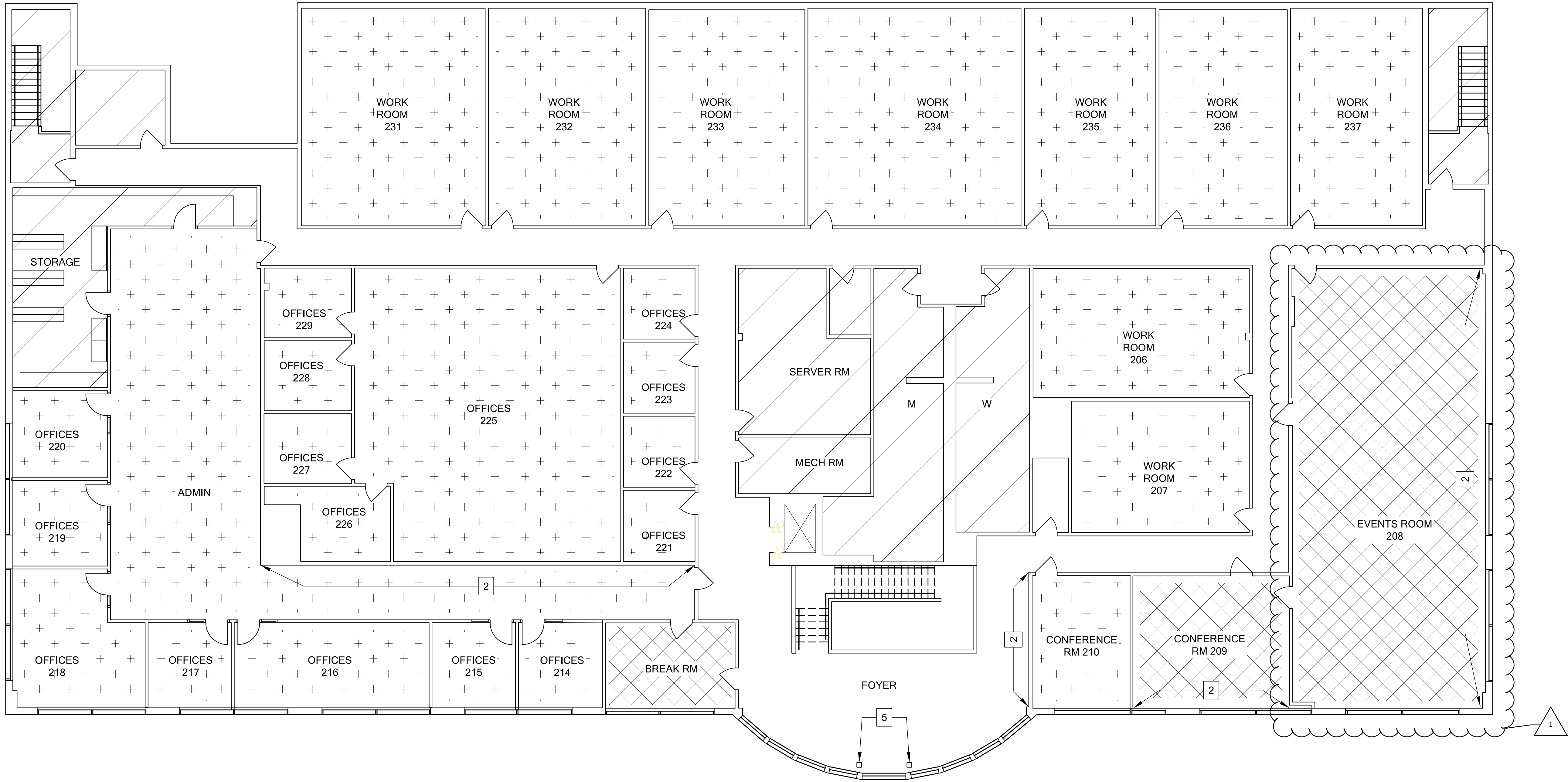
BUILDING O2 REFRESH PROJECT

LAC BUILDING O2

LOCATION:

| | |
|-------------|------------|
| DATE: | 02/26/2025 |
| DRAWN BY: | -- |
| CHECKED BY: | -- |

A1.07



KEYNOTES

- 1. (NOT USED IN PLAN).
- 2. NEW WALL, ACCENT COLOR.
- 3. (NOT USED IN PLAN).
- 4. (NOT USED IN PLAN).
- 5. ACCENT COLOR FOR COLUMNS.
- 6. (NOT USED IN PLAN)

| REVISIONS | | | | |
|-----------|------|--|--|--|
| NO. | DATE | | | |
| | | | | |
| | | | | |
| | | | | |



BUILDING O2 REFRESH PROJECT

LAC BUILDING O2

LOCATION:

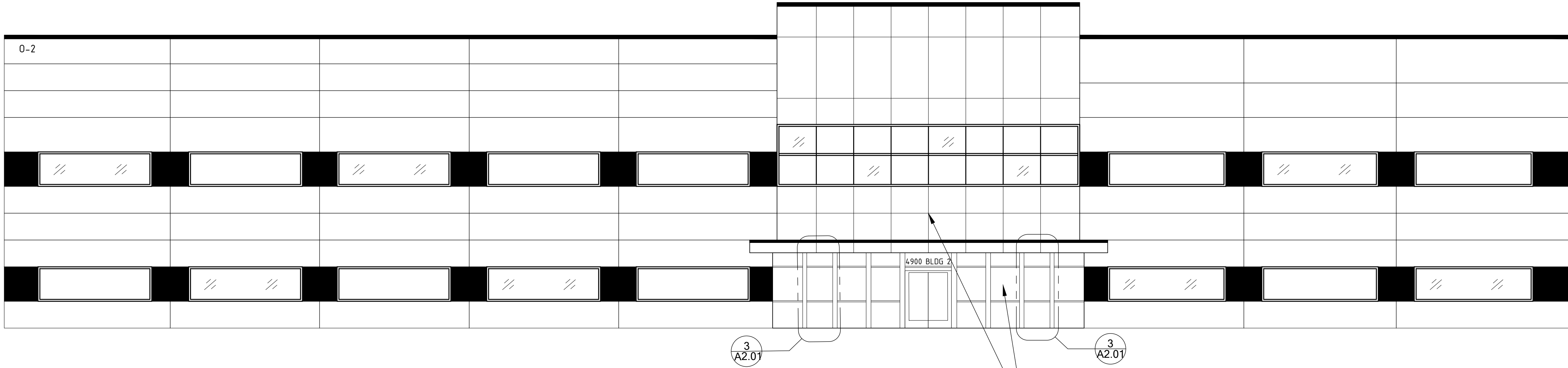
| | |
|-------------|------------|
| DATE: | 02/26/2025 |
| DRAWN BY: | -- |
| CHECKED BY: | -- |

A1.07

LEGEND

NOTE:
PATTERNS INDICATED ON THE FINISH PLANS AND FINISH LEGEND DO NOT CONVEY FINAL LAYOUT OR DESIRED FINISH PATTERN AND ARE SOLELY USED TO DISTINGUISH BETWEEN FINISHES AND ARE SHOWN FOR PURPOSES OF CLARITY.

- NOT PART OF SCOPE OF WORK
- NEW CARPET TILE
- NEW LVT FLOORING



NEW CONSOLIDATED WINDOW SIGNAGE GRAPHICS
FOR LEASING OCCUPANTS.

LOCATION OF NEW EXTERIOR BUILDING
LETTERING, TEXT TO BE DETERMINED.

EXISTING EXTERIOR ELEVATION
SCALE: 1/8" = 1'-0"

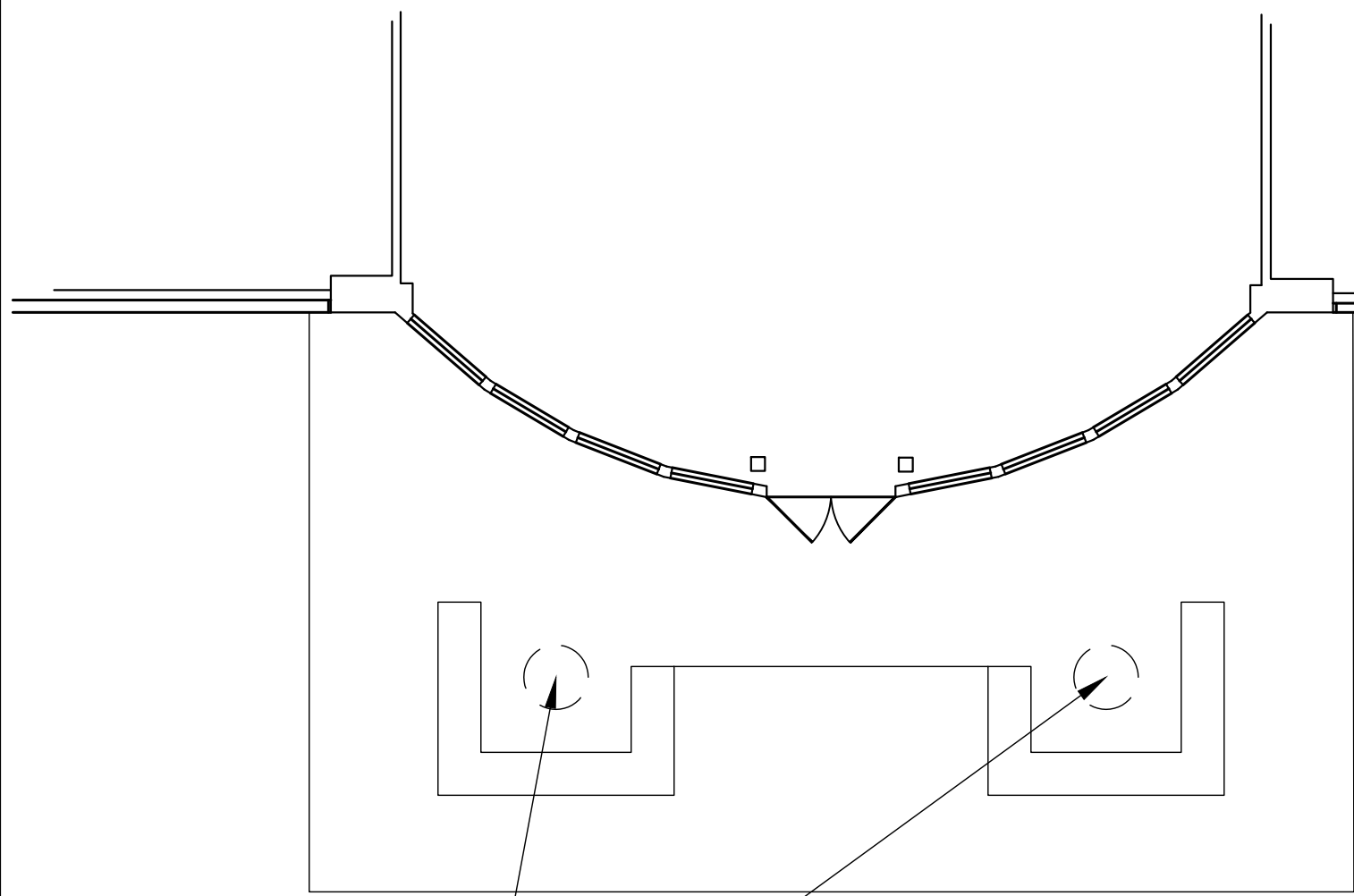
2

REMOVE EXISTING 3M FILM
SIGNAGE (TYPICAL)



EXISTING EXTERIOR WINDOW ELEVATION

3



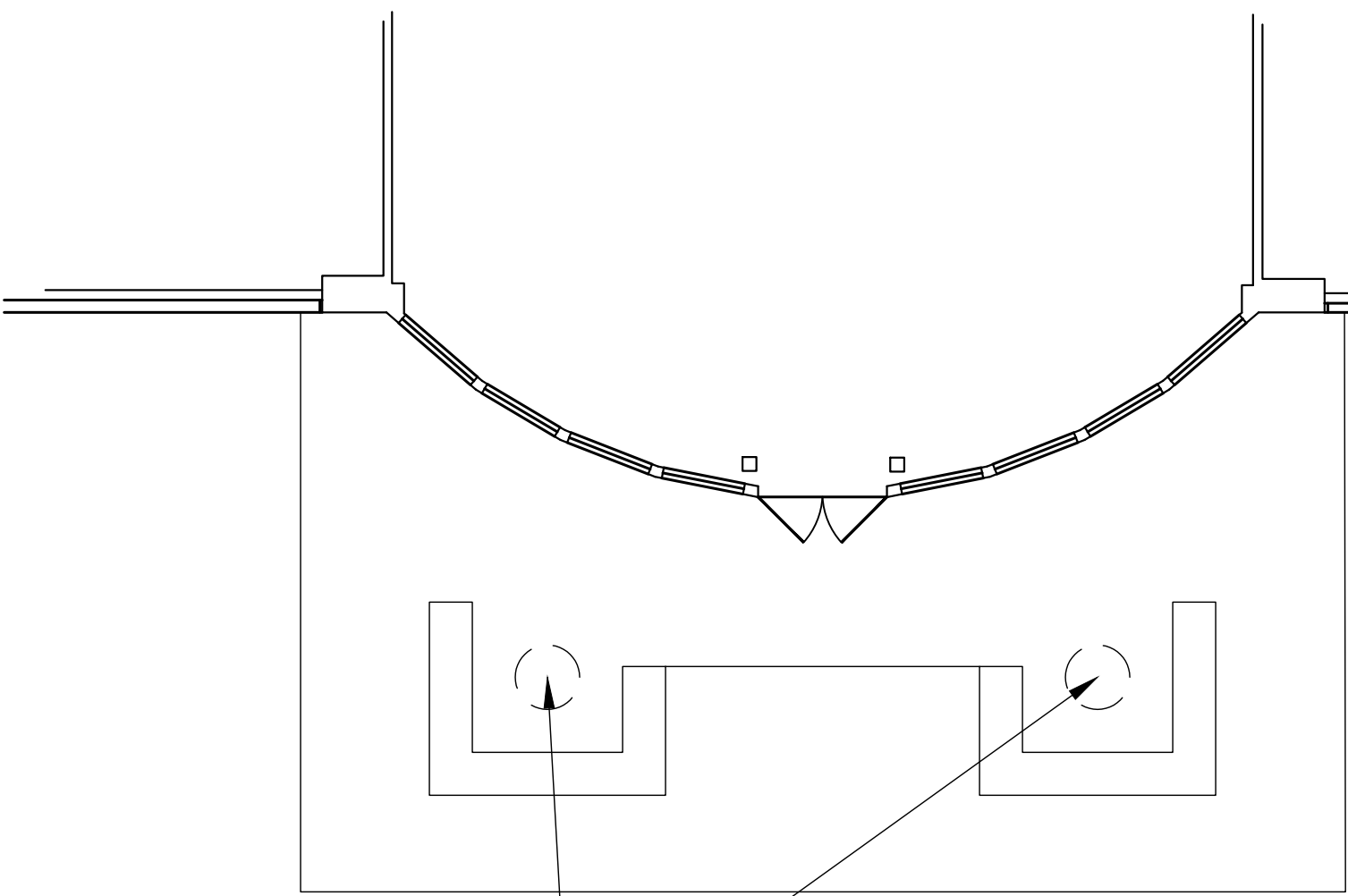
NEW PLANTING
per district standards, coordinate
with District.

NEW EXTERIOR PLANTER
SCALE: 1/8" = 1'-0"

25



DEMO EXISTING PLANTERS
AND PLANTINGS



EXISTING EXTERIOR PLANTER
SCALE: 1/8" = 1'-0"

5

KEYNOTES

| NO. | REVISIONS | | | | |
|-----|-----------|--|--|--|--|
| | DATE | | | | |
| | | | | | |



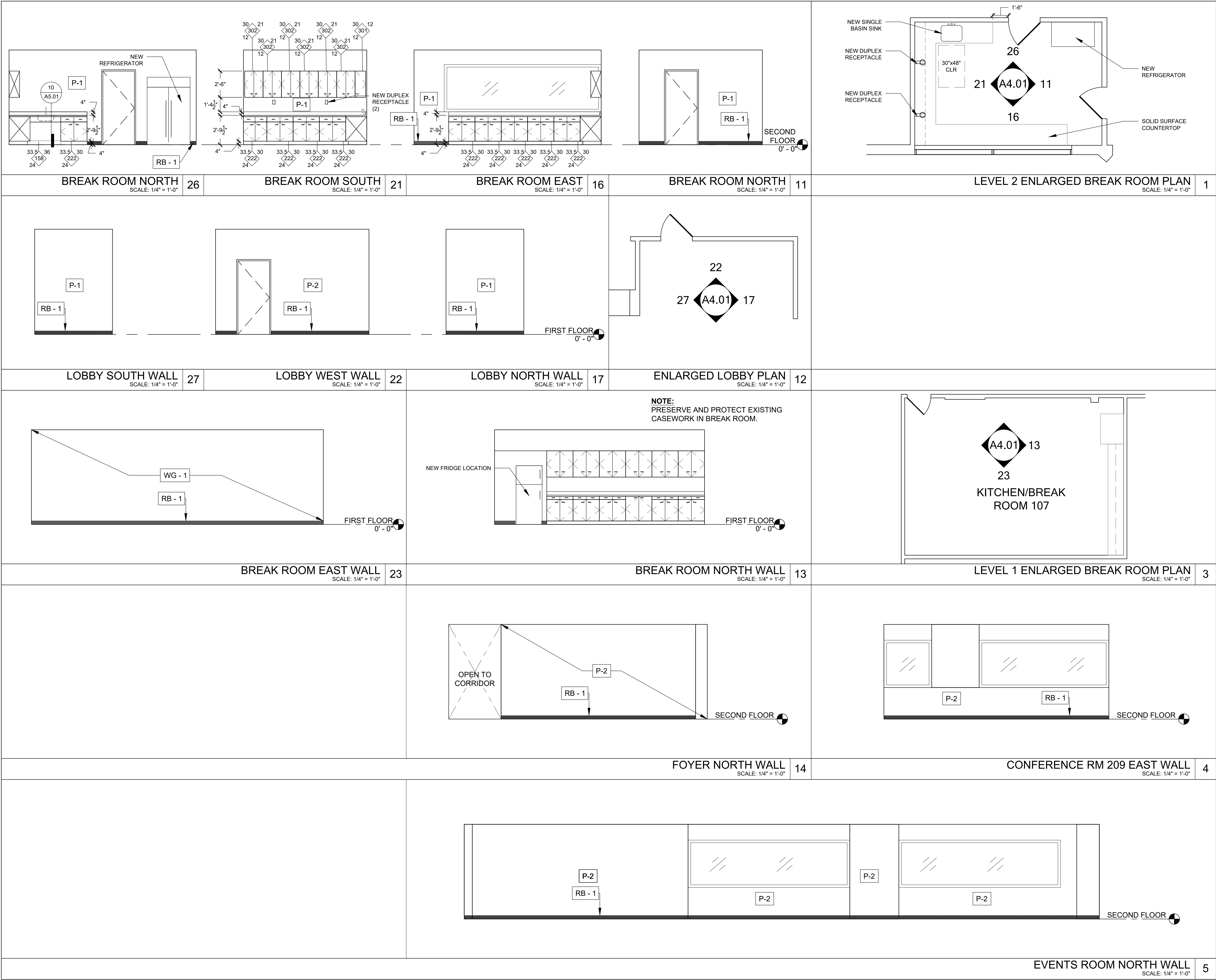
BUILDING O2 REFRESH PROJECT

LAC BUILDING O2

LOCATION:

| | |
|-------------|------------|
| DATE: | 02/26/2025 |
| DRAWN BY: | -- |
| CHECKED BY: | -- |

A2.01



| KEYNOTES | |
|----------|---------------------|
| LVT - 1 | = LUXURY VINYL TILE |
| VCT - 1 | = VINYL COMP. TILE |
| CARP - 1 | = CARPET TILE |
| PNT - 1 | = PAINT |
| PNT - 2 | = ACCENT PAINT |
| WG - 1 | = WALL GRAPHIC |
| RB - 1 | = RUBBER BASE |

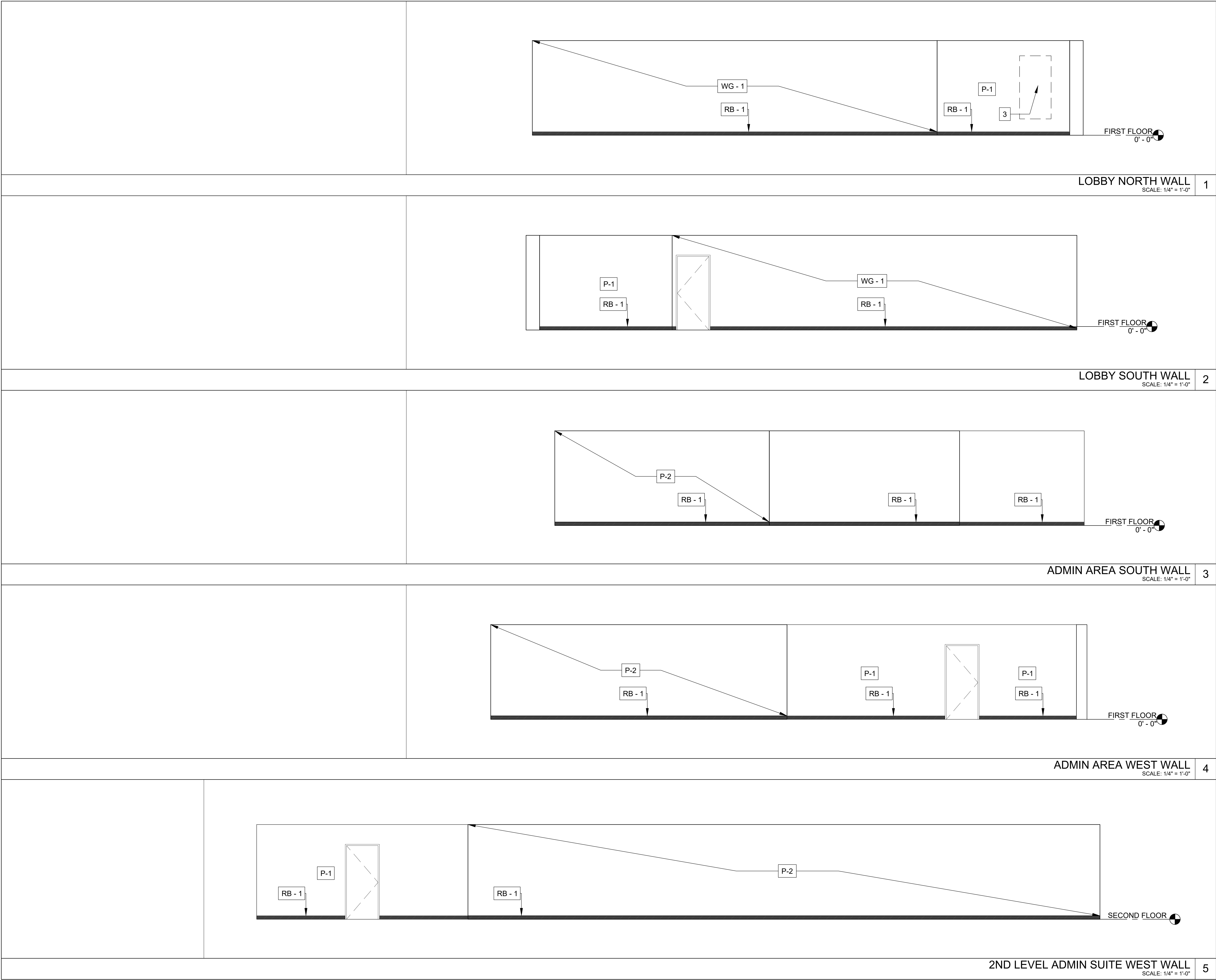
| NOTE | |
|--|---|
| REFER TO SHEET A6.01 & A6.02 FOR FINISH SCHEDULE | |
| LEGEND | |
| INTERIOR ELEVATIONS - CASEWORK LEGEND | |
| HEIGHT (T.O. COUNTERTOP) | WIDTH (INCHES) |
| CASEWORK SYMBOL | CDS # (CASEWORK DESIGN SERIES PER WOODWORK INSTITUTE) |
| DEPTH (TO EDGE OF COUNTER) | |
| INTERIOR ELEVATION REFERENCE | ELEVATION NUMBER |
| | SHEET NUMBER |

| REVISIONS | | | | |
|-----------|--|--|--|--|
| NO. | | | | |
| DATE | | | | |

| | |
|-----------------------------|--|
| BUILDING O2 REFRESH PROJECT | |
| LAC BUILDING O2 | |
| LOCATION: | |

| | |
|-------------|------------|
| DATE: | 02/26/2025 |
| DRAWN BY: | -- |
| CHECKED BY: | -- |

| |
|-------|
| A4.01 |
|-------|



KEYNOTES

LVT - 1

= LUXURY VINYL TILE

VCT - 1

= VINYL COMP. TILE

CARP - 1

= CARPET TILE

PNT - 1

= PAINT

PNT - 2

= ACCENT PAINT

WG - 1

= WALL GRAPHIC

RB - 1

= RUBBER BASE

NOTE

REFER TO SHEET **A6.01** & **A6.02**
FOR FINISH SCHEDULE

1

2

3

4

5

| | | | | | |
|-----------|------|--|--|--|--|
| REVISIONS | | | | | |
| | DATE | | | | |
| | NO. | | | | |

BUILDING O2 REFRESH PROJECT

LAC BUILDING O2

LOCATION:

| | |
|-------------|------------|
| DATE: | 02/26/2025 |
| DRAWN BY: | -- |
| CHECKED BY: | -- |

A4.02

| | | | | | | | | | | | | | | | | | | | | | | | | | | | | | | | | | | | | | | | | | | | | | | | | | | | | | | | | | | | | | | | | | | | | | | | | | | | | | | | | | | | | | | | | | | | | | | | | | | | | | | | | | | | | | | | | | | | | | | | | | | | | | | | | | | | | | | | | | |
|--|---|--|--|--|--|--|--|--|--|--|--|--|--|--|--|--|--|--|--|--|--|--|--|--|--|--|--|--|--|--|--|--|--|--|--|--|--|--|--|--|--|--|--|--|--|--|--|--|--|--|--|--|--|--|--|--|--|--|--|--|--|--|--|--|--|--|--|--|--|--|--|--|--|--|--|--|--|--|--|--|--|--|--|--|--|--|--|--|--|--|--|--|--|--|--|--|--|--|--|--|--|--|--|--|--|--|--|--|--|--|--|--|--|--|--|--|--|--|--|--|--|--|--|--|--|--|--|--|--|--|--|--|--|--|--|--|--|
| | <p>A. SQUARE EDGE: USE SQUARE HARDWOOD EDGE IN ALL COUNTERTOPS WHERE NO SINK IS PRESENT.</p> <p>B. NON DRIP EDGE: USE NON DRIP EDGE FULL LENGTH OF COUNTERTOP WHERE SINK IS PRESENT.</p> <p>C. PROVIDE P-LAM FOR WHERE KEYNOTES 12-4 AND 12-4C OCCUR AND PROVIDE SOLID SURFACE FOR WHERE KEYNOTE 12-2 OCCURS.</p> | | | | | | | | | | | | | | | | | | | | | | | | | | | | | | | | | | | | | | | | | | | | | | | | | | | | | | | | | | | | | | | | | | | | | | | | | | | | | | | | | | | | | | | | | | | | | | | | | | | | | | | | | | | | | | | | | | | | | | | | | | | | | | | | | | | | | | | | |
|--|---|--|--|--|--|--|--|--|--|--|--|--|--|--|--|--|--|--|--|--|--|--|--|--|--|--|--|--|--|--|--|--|--|--|--|--|--|--|--|--|--|--|--|--|--|--|--|--|--|--|--|--|--|--|--|--|--|--|--|--|--|--|--|--|--|--|--|--|--|--|--|--|--|--|--|--|--|--|--|--|--|--|--|--|--|--|--|--|--|--|--|--|--|--|--|--|--|--|--|--|--|--|--|--|--|--|--|--|--|--|--|--|--|--|--|--|--|--|--|--|--|--|--|--|--|--|--|--|--|--|--|--|--|--|--|--|--|

| FIRST FLOOR FINISH SCHEDULE | | | | | | | | | | |
|-----------------------------|-----------------|----------|--------|------------------|---------|------------------|-------------------|----------|---------|----------|
| RM NUMBER | ROOM NAME | FLOOR | | WALLS | | | | CASEWORK | | COMMENTS |
| | | FINISH | BASE | NORTH | EAST | SOUTH | WEST | FACE | COUNTER | |
| | LOBBY | VCT - 2 | RB - 1 | WG - 1 & PNT - 1 | PNT - 1 | WG - 1 & PNT - 1 | PNT - 2 | | | |
| 107 | BREAK ROOM | - | RB - 1 | PNT - 1 | PNT - 1 | PNT - 1 | PNT - 1 | | | |
| 108 | ADMIN | CARP - 1 | RB - 1 | PNT - 1 | PNT - 1 | PNT - 1 | PNT - 1 & PNT - 2 | | | |
| 114 | OFFICE | CARP - 1 | RB - 1 | PNT - 1 | PNT - 1 | PNT - 1 | PNT - 1 | | | |
| 115 | OFFICE | CARP - 1 | RB - 1 | PNT - 1 | PNT - 1 | PNT - 1 | PNT - 1 | | | |
| 116 | OFFICE | CARP - 1 | RB - 1 | PNT - 1 | PNT - 1 | PNT - 1 | PNT - 1 | | | |
| 117 | OFFICE | CARP - 1 | RB - 1 | PNT - 1 | PNT - 1 | PNT - 1 | PNT - 1 | | | |
| 118 | OFFICE | CARP - 1 | RB - 1 | PNT - 1 | PNT - 1 | PNT - 1 | PNT - 1 | | | |
| 119 | OFFICE | CARP - 1 | RB - 1 | PNT - 1 | PNT - 1 | PNT - 1 | PNT - 1 | | | |
| 120 | OFFICE | CARP - 1 | RB - 1 | PNT - 1 | PNT - 1 | PNT - 1 | PNT - 1 | | | |
| 121 | OFFICE | CARP - 1 | RB - 1 | PNT - 1 | PNT - 1 | PNT - 1 | PNT - 1 | | | |
| 122 | OFFICE | CARP - 1 | RB - 1 | PNT - 1 | PNT - 1 | PNT - 1 | PNT - 1 | | | |
| 123 | OFFICE | CARP - 1 | RB - 1 | PNT - 1 | PNT - 1 | PNT - 1 | PNT - 1 | | | |
| 124 | OFFICE | CARP - 1 | RB - 1 | PNT - 1 | PNT - 1 | PNT - 1 | PNT - 1 | | | |
| 125 | OFFICE | CARP - 1 | RB - 1 | PNT - 1 | PNT - 1 | PNT - 1 | PNT - 1 | | | |
| | | | | | | | | | | |
| 127 | BREAK ROOM | CARP - 1 | RB - 1 | PNT - 1 | PNT - 1 | PNT - 1 | PNT - 1 | | | |
| 128 | CONFERENCE ROOM | CARP - 1 | RB - 1 | PNT - 1 | PNT - 1 | PNT - 1 | PNT - 1 | | | |
| 129 | CONFERENCE ROOM | CARP - 1 | RB - 1 | PNT - 1 | PNT - 1 | PNT - 1 | PNT - 1 | | | |
| 134 | OFFICE | CARP - 1 | RB - 1 | PNT - 1 | PNT - 1 | PNT - 1 | PNT - 1 | | | |
| 135 | OFFICE | CARP - 1 | RB - 1 | PNT - 1 | PNT - 1 | PNT - 1 | PNT - 1 | | | |
| 136 | OFFICE | CARP - 1 | RB - 1 | PNT - 1 | PNT - 1 | PNT - 1 | PNT - 1 | | | |
| 137 | OFFICE | CARP - 1 | RB - 1 | PNT - 1 | PNT - 1 | PNT - 1 | PNT - 1 | | | |
| 139 | OFFICE | CARP - 1 | RB - 1 | PNT - 1 | PNT - 1 | PNT - 1 | PNT - 1 | | | |
| 140 | OFFICE | CARP - 1 | RB - 1 | PNT - 1 | PNT - 1 | PNT - 1 | PNT - 1 | | | |
| 141 | OFFICE | CARP - 1 | RB - 1 | PNT - 1 | PNT - 1 | PNT - 1 | PNT - 1 | | | |
| 142 | OFFICE | CARP - 1 | RB - 1 | PNT - 1 | PNT - 1 | PNT - 1 | PNT - 1 | | | |
| 143 | OFFICE | CARP - 1 | RB - 1 | PNT - 1 | PNT - 1 | PNT - 1 | PNT - 1 | | | |
| 144 | OFFICE | CARP - 1 | RB - 1 | PNT - 1 | PNT - 1 | PNT - 1 | PNT - 1 | | | |
| 145 | OFFICE | CARP - 1 | RB - 1 | PNT - 1 | PNT - 1 | PNT - 1 | PNT - 1 | | | |
| 146 | OFFICE | CARP - 1 | RB - 1 | PNT - 1 | PNT - 1 | PNT - 1 | PNT - 1 | | | |
| 152 A | CONFERENCE | CARP - 1 | RB - 1 | PNT - 1 | PNT - 1 | PNT - 1 | PNT - 1 | | | |
| 152 B | CONFERENCE | CARP - 1 | RB - 1 | PNT - 1 | PNT - 1 | PNT - 1 | PNT - 1 | | | |
| 153 | OFFICE | CARP - 1 | RB - 1 | PNT - 1 | PNT - 1 | PNT - 1 | PNT - 1 | | | |

FINISH MATERIALS LEGEND

- LVT - 1

VCT - 1

CARP - 1
- = LUXURY VINYL TILE - INTERFACE NORTHERN GRAIN COLOR: A02611 OAK SATIN 25cm x 1m

= VINYL COMPOSITE TILE - INTERFACE SEW STRAIGHT COLOR: 102403 SATIN 50cm x 50cm

= CARPET TILE
- PNT - 1

PNT - 2
- = PAINT

= ACCENT PAINT
- WG - 1
- = WALL GRAPHIC
- RB - 1
- = NEW RUBBER BASE

KEYNOTES

| | | | | | |
|-----------|--|--|--|--|--|
| REVISIONS | | | | | |
| | | | | | |
| | | | | | |
| DATE | | | | | |
| NO. | | | | | |

BUILDING O2 REFRESH PROJECT

LAC BUILDING O2

LOCATION:

DATE:02/26/2025

DRAWN BY:--

CHECKED BY:--

A6.01

| FIRST FLOOR FINISH SCHEDULE | | | | | | | | | | |
|-----------------------------|------------|----------|--------|---------|---------|---------|-------------------|----------|---------|----------|
| RM NUMBER | ROOM NAME | FLOOR | | WALLS | | | | CASEWORK | | COMMENTS |
| | | FINISH | BASE | NORTH | EAST | SOUTH | WEST | FACE | COUNTER | |
| | FOYER | - | RB - 1 | PNT - 2 | PNT - 1 | PNT - 1 | PNT - 1 | | | |
| 206 | CLASSROOM | CRPT - 1 | RB - 1 | PNT - 1 | PNT - 1 | PNT - 1 | PNT - 1 | | | |
| 207 | CLASSROOM | CRPT - 1 | RB - 1 | PNT - 1 | PNT - 1 | PNT - 1 | PNT - 1 | | | |
| 208 | EVENTS | CRPT - 1 | RB - 1 | PNT - 2 | PNT - 1 | PNT - 1 | PNT - 1 | | | |
| 209 | CONFERENCE | CRPT - 1 | RB - 1 | PNT - 2 | PNT - 1 | PNT - 1 | PNT - 1 | | | |
| 210 | CONFERENCE | CRPT - 1 | RB - 1 | PNT - 1 | PNT - 1 | PNT - 1 | PNT - 1 | | | |
| | BREAK ROOM | CRPT - 1 | RB - 1 | PNT - 1 | PNT - 1 | PNT - 1 | PNT - 1 | | | |
| | ADMIN | CRPT - 1 | RB - 1 | PNT - 1 | PNT - 1 | PNT - 1 | PNT - 1 & PNT - 2 | | | |
| 214 | OFFICE | CRPT - 1 | RB - 1 | PNT - 1 | PNT - 1 | PNT - 1 | PNT - 1 | | | |
| 215 | OFFICE | CRPT - 1 | RB - 1 | PNT - 1 | PNT - 1 | PNT - 1 | PNT - 1 | | | |
| 216 | OFFICE | CRPT - 1 | RB - 1 | PNT - 1 | PNT - 1 | PNT - 1 | PNT - 1 | | | |
| 217 | OFFICE | CRPT - 1 | RB - 1 | PNT - 1 | PNT - 1 | PNT - 1 | PNT - 1 | | | |
| 218 | OFFICE | CRPT - 1 | RB - 1 | PNT - 1 | PNT - 1 | PNT - 1 | PNT - 1 | | | |
| 219 | OFFICE | CRPT - 1 | RB - 1 | PNT - 1 | PNT - 1 | PNT - 1 | PNT - 1 | | | |
| 220 | OFFICE | CRPT - 1 | RB - 1 | PNT - 1 | PNT - 1 | PNT - 1 | PNT - 1 | | | |
| | | | | | | | | | | |
| 222 | OFFICE | CRPT - 1 | RB - 1 | PNT - 1 | PNT - 1 | PNT - 1 | PNT - 1 | | | |
| 223 | OFFICE | CRPT - 1 | RB - 1 | PNT - 1 | PNT - 1 | PNT - 1 | PNT - 1 | | | |
| 224 | OFFICE | CRPT - 1 | RB - 1 | PNT - 1 | PNT - 1 | PNT - 1 | PNT - 1 | | | |
| 225 | OFFICE | CRPT - 1 | RB - 1 | PNT - 1 | PNT - 1 | PNT - 1 | PNT - 1 | | | |
| 226 | OFFICE | CRPT - 1 | RB - 1 | PNT - 1 | PNT - 1 | PNT - 1 | PNT - 1 | | | |
| 227 | OFFICE | CRPT - 1 | RB - 1 | PNT - 1 | PNT - 1 | PNT - 1 | PNT - 1 | | | |
| 228 | OFFICE | CRPT - 1 | RB - 1 | PNT - 1 | PNT - 1 | PNT - 1 | PNT - 1 | | | |
| 229 | OFFICE | CRPT - 1 | RB - 1 | PNT - 1 | PNT - 1 | PNT - 1 | PNT - 1 | | | |
| | | | | | | | PNT - 1 | | | |
| 231 | CLASSROOM | CRPT - 1 | RB - 1 | PNT - 1 | PNT - 1 | PNT - 1 | PNT - 1 | | | |
| 232 | CLASSROOM | CRPT - 1 | RB - 1 | PNT - 1 | PNT - 1 | PNT - 1 | PNT - 1 | | | |
| 233 | CLASSROOM | CRPT - 1 | RB - 1 | PNT - 1 | PNT - 1 | PNT - 1 | PNT - 1 | | | |
| 234 | CLASSROOM | CRPT - 1 | RB - 1 | PNT - 1 | PNT - 1 | PNT - 1 | PNT - 1 | | | |
| 235 | CLASSROOM | CRPT - 1 | RB - 1 | PNT - 1 | PNT - 1 | PNT - 1 | PNT - 1 | | | |
| 236 | CLASSROOM | CRPT - 1 | RB - 1 | PNT - 1 | PNT - 1 | PNT - 1 | PNT - 1 | | | |
| 237 | CLASSROOM | CRPT - 1 | RB - 1 | PNT - 1 | PNT - 1 | PNT - 1 | PNT - 1 | | | |

FINISH MATERIALS LEGEND

LVT - 1 = LUXURY VINYL TILE - INTERFACE NORTHERN GRAIN COLOR: A02611 OAK SATIN 25cm x 1m

VCT - 1 = VINYL COMPOSITE TILE - INTERFACE SEW STRAIGHT COLOR: 102403 SATIN 50cm x 50cm

CARP - 1 = CARPET TILE

PNT - 1 = PAINT

PNT - 2 = ACCENT PAINT

WG - 1 = WALL GRAPHIC

RB - 1 = NEW RUBBER BASE

KEYNOTES

1

REVISIONS

DATE

NO.

BUILDING O2 REFRESH PROJECT

LAC BUILDING O2

LOCATION:

DATE: 02/26/2025

DRAWN BY: --

CHECKED BY: --

A6.02