

ABBREVIATIONS	
AC	ALTERNATING CURRENT
AC	AIR CONDITIONER
AFF	ABOVE FINISHED FLOOR
AFG	ABOVE FINISHED GRADE
AIC	AMPERES INTERRUPTING CAPACITY SYMM
A	AMPERE
AMP	AMPERE
ANN	FIRE ALARM ANNUNCIATOR
ATS	AUTOMATIC TRANSFER SWITCH
BATT	BATTERY
BLDG	BUILDING
BRKR	BREAKER
C	CONDUIT
CB	CIRCUIT BREAKER
OR	CIRCUIT
OKT	CIRCUIT ONLY WITH PULLWIRE
CO	COMMON
COM	COMMON
COMM	COMMUNICATION
CONN	CONNECT
CONT	CONTINUE
CT	CURRENT TRANSFORMER
CU	COPPER
DB	DIRECT BURIED
DEF	DUAL ELEMENT FUSE
DISC	DISCONNECT
DN	DOWN
DPT	DOUBLE-POLE DOUBLE-THROW
DPST	DOUBLE-POLE SINGLE-THROW
EM	EMERGENCY
EMER	EMERGENCY
ENCL	ELECTRICAL METALLIC TUBING
EOL	ENCLOSURE
END OF LINE	END OF LINE
EQUIP	EQUIPMENT
EX	EXISTING
EXIST	EXISTING
F	FUSE
FACP	FIRE ALARM CONTROL PANEL
FLA	FULL LOAD AMPERES
FLEX	FLEXIBLE METALLIC TUBING
G	GROUND
GRD	GROUND
GND	GROUND
GFCI	GROUND FAULT CIRCUIT INTERRUPTER
HOA	HAND-OFF-AUTO SWITCH
HP	HORSEPOWER
HZ	HERTZ
IC	INTERRUPTING CAPACITY IN AMPS RMS
IG	ISOLATED GROUND
J	JUNCTION BOX
JB	JUNCTION BOX
J-BOX	JUNCTION BOX
K	KILO
KCMIL	THOUSAND CIRCULAR MILS
KVA	KILOVOLT-AMPERES
KW	KILOWATT
KWH	KILOWATT-HOUR
KVAR	KILOVAR
LCL	LONG CONTINUOUS LOAD
LRA	LOCKED ROTOR AMP
LTG	LIGHTING
M	MAGNETIC STARTER COIL
M	MOTOR
M	METER
MCA	MINIMUM CIRCUIT AMPS
MCC	MOTOR CONTROL CENTER
MDM	THOUSAND CIRCULAR MILS
MOSP	MAXIMUM OVERCURRENT PROTECTION
MTG	MOUNTING
MTS	MANUAL TRANSFER SWITCH
N	NEUTRAL
NEUT	NEUTRAL
NEC	NATIONAL ELECTRIC CODE
NF	NONFUSED
NTS	NOT TO SCALE
2P	2 POLE, SIMILAR FOR OTHER QTY
PB	PULLBOX
PHL	PANEL
PT	POTENTIAL TRANSFORMER
PVC	POLYVINYL CHLORIDE
PWR	POWER
Ø PH	PHASE
SCA	SHORT CIRCUIT AMPS
SBJ	SUPPLY SIDE BONDING JUMPER
SCOR	SHORT CIRCUIT CURRENT RATING
SQ FT	SQUARE FEET
SW	SWITCH
SWBD	SWITCHBOARD
SWGR	SWITCHGEAR
TC	TIME CLOCK
TEL	TELEPHONE
TEMP	TEMPORARY
TRMR	TRANSFORMER
TRMR	TRANSFORMER
TYP	TYPICAL
UG	UNDERGROUND
UON	UNLESS OTHERWISE NOTED
UPS	UNINTERRUPTIBLE POWER SYSTEM
VFD	VARIABLE FREQUENCY DRIVE
VPI	VACUUM PRESSURE IMPREGNATED
WCR	WITHSTAND CURRENT RATING
WP	WEATHERPROOF
WT	WATERTIGHT

FIRE ALARM SYMBOLS	
	MANUAL FIRE ALARM PULL STATION.
	DUCT SMOKE DETECTOR. DEVICE TO BE POWERED BY FIRE ALARM SYSTEM. COORDINATE SPECIFICS WITH MECHANICAL. PROVIDE REMOTE INDICATING LIGHT WITH TEST SWITCH FOR EACH DEVICE INSTALLED IN A NON VISIBLE LOCATION. MANUFACTURER: NOTIFIER RTS451.
	WALL MOUNTED FIRE ALARM SPEAKER.
	CILING MOUNTED FIRE ALARM SPEAKER.
	WALL MOUNTED COMBINATION FIRE ALARM SPEAKER
	CILING MOUNTED COMBINATION FIRE ALARM SPEAKER STROBE.
	WALL MOUNTED DOOR HOLD OPEN DEVICE.
	COMBINATION HEAT/SMOKE DETECTOR.
	SMOKE DETECTOR.
	HEAT DETECTOR.
	COMBINATION SMOKE FIRE DAMPER. PROVIDE REMOTE INDICATING LIGHT WITH TEST SWITCH FOR EACH DEVICE INSTALLED IN A NON VISIBLE LOCATION. MANUFACTURER: NOTIFIER RTS451.

FIRE ALARM DEFERRED SUBMITTAL NOTES	
1.	FIRE ALARM SYSTEM WILL BE A DESIGN BUILD BY FIRE ALARM CONTRACTOR. INCLUDING ALL 120V POWER, ANNUNCIATING AND INITIATING DEVICES, INTERCONNECTION TO HVAC AND SMOKE CONTROL SYSTEMS. SYSTEM TO INCLUDE ALL NATIONAL, STATE AND LOCAL CITY REQUIREMENTS.
2.	CONTRACTOR WILL ENGINEER AND SUBMIT COMPLETE FIRE LIFE SAFETY SYSTEM DRAWINGS TO OWNER AND ENGINEER PRIOR TO SUBMITTING TO FIRE MARSHALL FOR APPROVAL.
3.	ROUGH-IN CONDUIT AND BOXES WILL BE PROVIDED AND INSTALLED BY ELECTRICAL CONTRACTOR. WIRING AND DEVICES WILL BE BY FIRE ALARM CONTRACTOR.
4.	FIRE ALARM SYSTEM SHALL BE BUILDING STANDARD. FIRE ALARM DEVICE LOCATIONS TO BE COORDINATED WITH OTHER CEILING AND WALL MOUNTED DEVICES. DRAWINGS TO INCLUDE ALL CEILING MOUNTED DEVICES AS SHOWN ON THE ARCHITECTURAL REFLECTED CEILING PLAN.
5.	NEW DEVICES TO BE ADDRESSABLE AND POWERED BY THE FIRE ALARM SYSTEM. INCLUDING DOOR HOLD DEVICES.
6.	PROGRAM SYSTEM TO SHUT DOWN ALL REQUIRED HVAC UNITS.
7.	PROGRAM SYSTEM TO SHUT DOWN ALL REQUIRED AUDIO / VISUAL SYSTEMS.
8.	FIRE ALARM RACEWAY TO BE RED.
9.	CIRCUIT BREAKERS FEEDING FIRE ALARM SYSTEM COMPONENTS SHALL BE RED WITH LOCK ON DEVICE.

TELECOMMUNICATION SYMBOLS	
	PROVIDE OUTLET WITH 1 1/4" CONDUIT STUBBED INTO ACCESSIBLE CEILING. FOR INACCESSIBLE AND OPEN CEILINGS, PROVIDE CONDUIT TO TELEPHONE CLOSET.
	WALL MOUNTED TEL/DATA OUTLET.
	CILING MOUNTED TEL/DATA OUTLET.
	FLUSH FLOOR MOUNTED TEL/DATA OUTLET.
	WALL MOUNTED TELEPHONE OUTLET.
	CILING MOUNTED TELEPHONE OUTLET.
	FLOOR MOUNTED TELEPHONE OUTLET.
	WIRELESS ACCESS POINT.

	WALL MOUNTED SYSTEM FURNITURE TELECOMM FEED WITH (2) 1 1/4" CONDUITS STUBBED INTO ACCESSIBLE CEILING. FOR INACCESSIBLE OR OPEN CEILINGS, PROVIDE CONDUIT TO TELEPHONE CLOSET.
	CEILING MOUNTED SYSTEM FURNITURE TELECOMM FEED. FOR INACCESSIBLE OR OPEN CEILINGS, PROVIDE (2) 1 1/4" CONDUITS TO TELEPHONE CLOSET.
	FLOOR MOUNTED SYSTEM FURNITURE TELECOMM FEED WITH (2) 1 1/4" CONDUITS STUBBED INTO ACCESSIBLE CEILING. FOR INACCESSIBLE OR OPEN CEILINGS, PROVIDE CONDUIT TO TELEPHONE CLOSET.

AUDIO / VISUAL SYMBOLS	
	WALL MOUNTED AUDIO/VISUAL 4" DEEP OUTLET WITH 1 1/2" CONDUIT STUBBED INTO ACCESSIBLE CEILING SPACE. FOR INACCESSIBLE OR OPEN CEILINGS, PROVIDE CONDUIT TO A/V EQUIPMENT RACK.
	WALL MOUNTED TELEVISION 4" DEEP OUTLET WITH 1 1/2" CONDUIT STUBBED INTO ACCESSIBLE CEILING SPACE. FOR INACCESSIBLE OR OPEN CEILINGS, PROVIDE CONDUIT TO A/V EQUIPMENT RACK.
	CEILING MOUNTED TELEVISION OUTLET. FOR INACCESSIBLE OR OPEN CEILINGS, PROVIDE 1 1/2" CONDUIT TO A/V EQUIPMENT RACK.
	WALL MOUNTED SPEAKER OUTLET WITH 1" CONDUIT STUBBED INTO ACCESSIBLE CEILING SPACE. FOR INACCESSIBLE OR OPEN CEILINGS, PROVIDE 1" CONDUIT TO A/V EQUIPMENT RACK.
	CILING MOUNTED SPEAKER OUTLET. FOR INACCESSIBLE OR OPEN CEILINGS, PROVIDE 1" CONDUIT TO A/V EQUIPMENT RACK.
	FLOOR MOUNTED SPEAKER OUTLET. FOR INACCESSIBLE OR OPEN CEILINGS, PROVIDE 1" CONDUIT TO A/V EQUIPMENT RACK.

SECURITY SYMBOLS	
	SECURITY CAMERA
	CARD READER
	DURESS ALARM, COORDINATE LOCATION WITH FURNITURE LAYOUT AND ARCHITECT.

ONE LINE DIAGRAM SYMBOLS	
	EXIST ITEMS TO REMAIN
	EXIST ITEMS TO BE REMOVED
	NEW ITEMS
	TRANSFORMER, AS NOTED ON SINGLE LINE
	ISOLATION TYPE TRANSFORMER WITH ELECTROSTATIC SHIELD, AS NOTED ON SINGLE LINE
	LOW VOLTAGE CIRCUIT BREAKER
	OCPD WITH GROUND FAULT PROTECTION
	NON-FUSED DISCONNECT SWITCH
	FUSED DISCONNECT SWITCH
	DRAW-OUT MEDIUM-VOLTAGE CIRCUIT BREAKER
	MOTOR CONTROL CENTER BUCKET WITH COMBINATION MCP AND STARTER WITH OVERLOADS
	CONTACTOR, SIZE 1 MINIMUM
	MOTOR OVERLOAD PROTECTION
	STAND ALONE MOTOR STARTER, SIZE 1 MINIMUM
	DEMAND TYPE KWH METER
	KIRK-KEY INTERLOCK BETWEEN DEVICES
	AUTOMATIC TRANSFER SWITCH
	CURRENT TRANSFER, RATIO AS NOTED.
	PROTECTIVE RELAY, FUNCTION PER ANSI STANDARD DESIGNATION
	AMMETER SWITCH
	AMMETER
	ELECTRONIC METER, UON OUTLET HAMMER 10 ANALYZER CAT. NO. 10A6430 OR EQUAL BY SQUARE D SCHNEIDER
	TEST SWITCH, ABB
	SEPARABLE CONNECTORS, 15KV 600A MINIMUM
	GROUND

LIGHTING SYMBOLS	
	LIGHTING FIXTURE, AS INDICATED BY FIXTURE TYPE. REFER TO FIXTURE SCHEDULE FOR ADDITIONAL INFORMATION. 100 WATT TYPE F1 SHOWN.
	SHADING INDICATES ASSOCIATED FIXTURE ON EMERGENCY POWER.
	EXIT SIGN: SHADED PORTION INDICATES ILLUMINATED FACE. DIRECTIONAL ARROWS AS INDICATED ON PLANS.
	EXIT SIGN: SHADED PORTION INDICATES ILLUMINATED FACE. DIRECTIONAL ARROWS AS INDICATED ON PLANS. PROVIDE MASTER/SLAVE HIGH AND LOW LEVEL EXIT SIGNS WHEREVER AN EXIT SIGN IS INDICATED ON PLANS.
	LINE VOLTAGE SWITCH. SUBSCRIPT INDICATES: X=NONE - SINGLE POLE X=3 - THREE WAY X=q,b,c - OUTLETS CONTROLLED VIA (3) 1 POLE SWITCHES X=2 - DOUBLE POLE X=K - KEY OPERATED X=R - MOMENTARY RELAY ON/OFF X=DM - WALL BOX DIMMER
	LOW VOLTAGE DIGITAL LIGHTING CONTROL STATION WITH ON/OFF AND RAISE/LOWER BUTTONS. SUBSCRIPT INDICATES SWITCH LEG TO BE CONTROLLED. USE SINGLE CHANNEL STATION PER SWITCH LEG. (4x) DENOTES INDICATED SWITCH LEGS ARE SIMULTANEOUSLY CONTROLLED BY ONE SINGLE CHANNEL CONTROL STATION.
	COMBINATION OCCUPANCY SENSOR / ENTRY SWITCH, 180 DEGREE SMALL MOTION COVERAGE. SUBSCRIPT INDICATES SWITCH LEG OR CIRCUIT TO BE CONTROLLED.
	ROOM TYPE OCCUPANCY SENSOR, 360 DEGREE SMALL MOTION COVERAGE.
	CORRIDOR TYPE OCCUPANCY SENSOR, 360 DEGREE LARGE MOTION COVERAGE.
	COMBINATION OCCUPANCY/PHOTOCELL SENSOR, 360 DEGREE SMALL MOTION COVERAGE.

OUTLET SYMBOLS	
	SUBSCRIPT "1C" INDICATES ASSOCIATED OUTLET IS MOUNTED AT COUNTER HEIGHT. REFER TO ARCHITECTURAL DRAWINGS. RECEPTACLES ARE NEMA 5-20R UON.
	WALL MOUNTED DUPLEX RECEPTACLE
	CEILING MOUNTED DUPLEX RECEPTACLE
	FLUSH FLOOR MOUNTED DUPLEX RECEPTACLE
	WALL MOUNTED CONTROLLED GREEN DUPLEX RECEPTACLE. LABEL "CONTROLLED".
	FLUSH FLOOR MOUNTED CONTROLLED GREEN DUPLEX RECEPTACLE. LABEL "CONTROLLED".
	WALL MOUNTED QUADRUPLX RECEPTACLE.
	CEILING MOUNTED QUADRUPLX RECEPTACLE
	FLUSH FLOOR MOUNTED QUADRUPLX RECEPTACLE
	ONE CONSTANT HOT DUPLEX AND ONE CONTROLLED GREEN DUPLEX RECEPTACLE. LABEL GREEN RECEPTACLE "CONTROLLED". WALL MOUNTED.
	WALL MOUNTED ISOLATED GROUND DUPLEX RECEPTACLE.
	CEILING MOUNTED ISOLATED GROUND DUPLEX RECEPTACLE.
	FLUSH FLOOR MOUNTED ISOLATED GROUND DUPLEX RECEPTACLE.
	WALL MOUNTED ISOLATED GROUND QUADRUPLX RECEPTACLE.
	CEILING MOUNTED ISOLATED GROUND QUADRUPLX RECEPTACLE.
	FLUSH FLOOR MOUNTED ISOLATED GROUND QUADRUPLX RECEPTACLE.
	WALL MOUNTED JUNCTION BOX 4" SQUARE MINIMUM.
	CEILING MOUNTED JUNCTION BOX 4" SQUARE MINIMUM.
	FLUSH FLOOR MOUNTED JUNCTION BOX 4" SQUARE MINIMUM.
	WALL MOUNTED JUNCTION BOX SIZE AS REQUIRED FOR NUMBER OF WIRES.
	CEILING MOUNTED JUNCTION BOX SIZE AS REQUIRED FOR NUMBER OF WIRES.
	FLUSH FLOOR MOUNTED JUNCTION BOX SIZE AS REQUIRED FOR NUMBER OF WIRES.
	WALL MOUNTED SYSTEM FURNITURE POWER FEED.
	CEILING MOUNTED SYSTEM FURNITURE POWER FEED.
	FLUSH FLOOR MOUNTED SYSTEM FURNITURE POWER FEED.
	COMBINATION POWER/SIGNAL POKE-THRU WITH (2) DUPLEX CONVENIENCE RECEPTACLES AND (4) TEL/DATA JACKS. WIREMOLD #RC4ATCAL.
	SPECIAL RECEPTACLE PER SCHEDULE BELOW. SUBSCRIPT "L" INDICATES ASSOCIATED RECEPTACLE IS LOOKING TYPE.

	WALL
	CEILING
	FLUSH FLOOR
X=A	- NEMA 5-30R: 125V,16,30A,2P,3W
X=B	- NEMA 14-20R: 125/250V,16,20A,3P,4W
X=D	- NEMA 14-30R: 125/250V,16,30A,3P,4W
X=G	- NEMA 5-20R: GROUND FAULT CIRCUIT INTERRUPTING
X=H	- NEMA 6-20R: 250V,16,20A,2P,3W
X=K	- NEMA 6-30R: 250V,16,30A,2P,3W
X=M	- NEMA 6-50R: 250V,16,50A,2P,3W
X=N	- NEMA 15-20R: 250V,36,20A,3P,4W
X=P	- NEMA 15-30R: 250V,36,30A,3P,4W
X=R	- NEMA 15-50R: 250V,36,50A,3P,4W

	MANUAL MOTOR STARTER WITH HOA AND THERMAL OVERLOAD.
	DISCONNECT SWITCH, 30 AMP MINIMUM
	COMBINATION DISCONNECT SWITCH AND MOTOR STARTER WITH HOA, 30 AMP, SIZE 1 MINIMUM
	MOTOR, MECHANICAL EQUIPMENT DESIGNATED "AH-1"
	SURFACE MOUNTED MISCELLANEOUS CABINET AS INDICATED ON PLANS
	FLUSH MOUNTED MISCELLANEOUS CABINET AS INDICATED ON PLANS
	SURFACE MOUNTED PANELBOARD, DESIGNATED "LIA"
	FLUSH MOUNTED PANELBOARD
	SWITCHBOARD
	COPPER GROUND BUS
	COPPER TECHNICAL GROUND BUS ON ISOLATORS
	COPPER GROUND ROD, MINIMUM 3/4"ø x 10' LONG

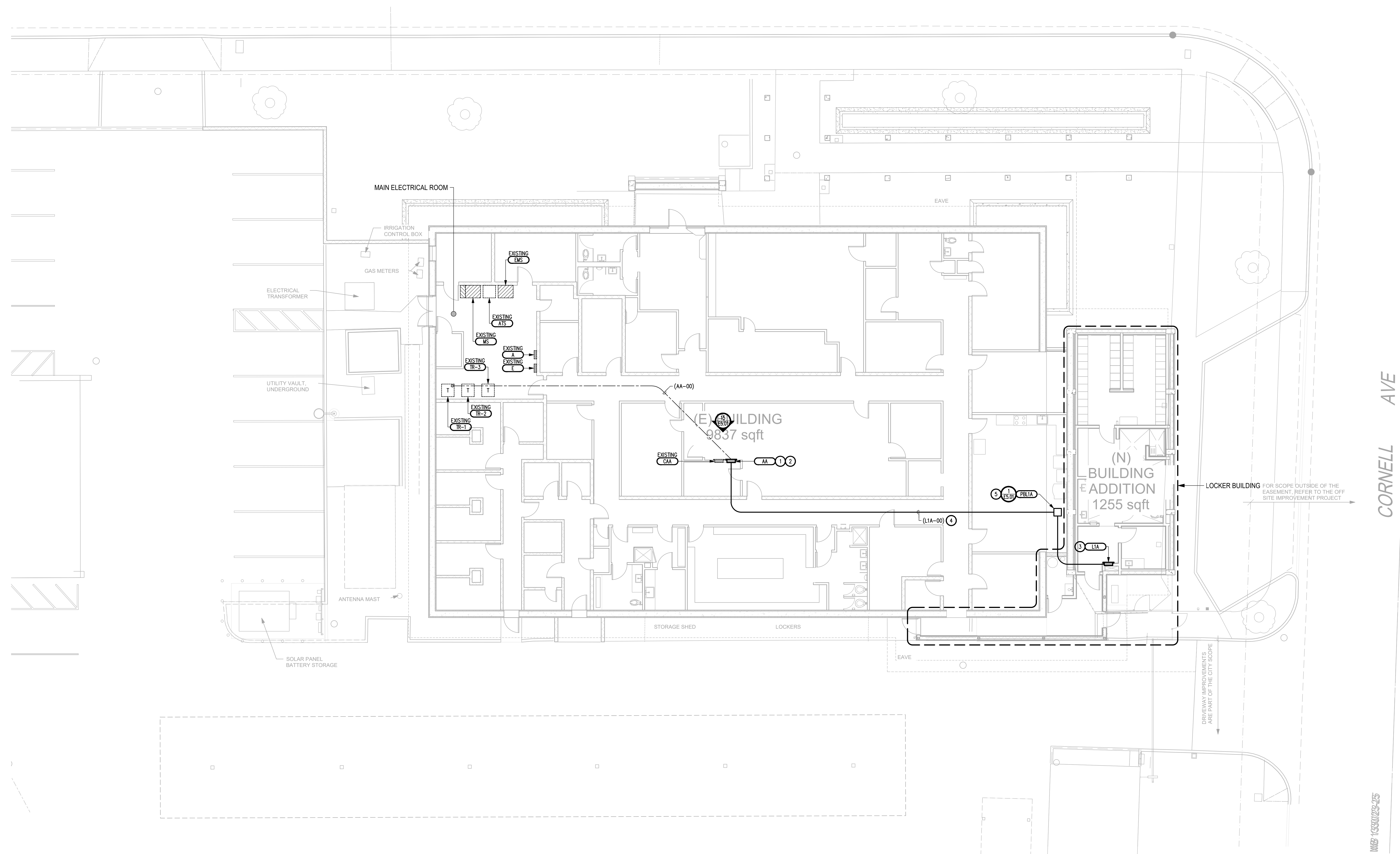
ELECTRICAL SYMBOLS	
	EQUIPMENT NAME OR NUMBER
	MOUNTING HEIGHT FROM FINISHED FLOOR TO CENTERLINE OF OUTLET OR EQUIPMENT
	EXIST ITEMS TO REMAIN
	EXIST ITEMS TO BE REMOVED
	NEW ITEMS
	HOMERUN TO PANELBOARD, CABINET OR TERMINAL BLOCK AS INDICATED.
	HOMERUN TO SWITCHBOARD OR MCC AS INDICATED. REFER TO SINGLE LINE FOR CONDUIT AND WIRE SIZES.
	CONDUIT END CAP.
	CONDUIT DOWN
	CONDUIT UP
	CONDUIT RUN UNDERGROUND OR BELOW FLOOR.
	CONDUIT CONCEALED IN WALL OR CEILING.
	SURFACE WIREMOLD RACEWAY
	OUTLET SPACING. NUMBER IN (X) INDICATES OUTLET SPACING. WHERE MULTIPLE CIRCUITS ARE INDICATED, ALTERNATE CIRCUITS FOR OUTLETS ALONG RACEWAY.
	VOICE/DATA CONDUIT ONLY. SIZE AND QTY AS NOTED. T=1 1/4" / T1=1 1/2" / T2=2" / T3=3" / T4=4" / (X)T4=(X)4"
	AUDIO VISUAL CONDUIT ONLY. SIZE AND QTY AS NOTED. AV=1 1/4" / AV1=1 1/2" / AV2=2" / AV3=3" / (X)AV3=(X)3"
	SECURITY SYSTEM CONDUIT ONLY. SIZE AND QTY AS NOTED. S=3/4" / S1=1" / S2=1 1/4" / S3=1 1/2" / (X)S1=(X)1"
	GROUND CONDUCTOR AS NOTED
	1#12,1#12N,1#12G,1/2C
	2#12,2#12N,1#12G,1/2C
	3#12,3#12N,1#12G,1/2C
	4#12,4#12N,1#12G,3/4C
	5#12,5#12N,1#12G,3/4C
	6#12,6#12N,1#12G,3/4C
	1#10,1#10N,1#10G,1/2C
	2#10,2#10N,1#10G,3/4C
	3#10,3#10N,1#10G,3/4C
	4#10,4#10N,1#10G,1C
	5#10,5#10N,1#10G,1C
	6#10,6#10N,1#10G,1C
	1#8,1#8N,1#10G,1/2C
	2#8,2#8N,1#10G,3/4C
	3#8,3#8N,1#10G,1C
	4#8,4#8N,1#10G,1 1/4C
	5#8,5#8N,1#10G,1 1/4C
	6#8,6#8N,1#10G,1 1/4C
	2#12,1#12G,1/2C
	3#12,1#12G,1/2C
	4#12,1#12G,1/2C
	5#12,1#12G,1/2C
	6#12,1#12G,1/2C
	7#12,1#12G,3/4C
	8#12,1#12G,3/4C
	2#10,1#10G,1/2C
	3#10,1#10G,1/2C
	4#10,1#10G,3/4C
	5#10,1#10G,3/4C
	6#10,1#10G,3/4C
	7#10,1#10G,1C
	2#8,1#8G,1/2C
	3#8,1#8G,3/4C
	4#8,1#8G,1C
	5#8,1#8G,1C
	6#8,1#8G,1C
	7#8,1#8G,1 1/4C
	8#8,1#8G,1 1/4C
	MANUAL MOTOR STARTER WITH HOA AND THERMAL OVERLOAD.

RENOVATION GENERAL NOTES	
A.	GENERAL:
A.A.	MODIFY EXISTING INSTALLATIONS TO ACCOMMODATE THE RENOVATION.
A.B.	RE-SUPPORT EXISTING ELECTRICAL INSTALLATION TO REMAIN WHERE THE DEMOLITION HAS AFFECTED THE SUPPORTS.
A.C.	IDENTIFY ANY IMPROPERLY SUPPORTED ITEMS PRIOR TO BEGINNING WORK.
A.D.	MAINTAIN CONTINUITY TO ALL ELECTRICAL ITEMS THAT ARE TO REMAIN.
B.	DEMOLITION:
B.A.	REMOVE ALL ELECTRICAL ITEMS AND ASSOCIATED APPURTENANCES TO SOURCE OF SUPPLY.
B.B.	WHERE EMBEDDED IN CONCRETE, CUT CONDUITS FLUSH WITH CONCRETE AND CAP. PROVIDE BLANK COVER PLATES FOR BOXES.
B.C.	WHERE REQUIRED, MAINTAIN ACCESS TO ALL ACTIVE ELECTRICAL INSTALLATIONS.
B.D.	REMOVE ALL ITEMS FROM PROJECT SITE.
C.	FINISHES:
C.A.	PATCH SURFACES AND CLOSE OPENINGS RESULTING FROM DEMOLITION OR REMOVAL OF EQUIPMENT.
C.B.	REPAIR SURFACES AND OPENINGS WITH METHODS SUITABLE FOR MAINTAINING EXISTING FIRE, SOUND AND WATERPROOF RATINGS.
C.C.	REPAIR AND REFINISH SURFACES BY SKILLED MECHANICS OF TRADES INVOLVED.
D.	PANELBOARDS:
D.A.	CLEAN EXPOSED SURFACES AND CHECK TIGHTNESS OF ELECTRICAL CONNECTIONS.
D.B.	PROVIDE BLANK PLATES FOR VACANT POSITIONS.
D.C.	TRACE BRANCH CIRCUITS SERVING THE AREA TO BE RENOVATED.
D.D.	PROVIDE TYPED CIRCUIT DIRECTORY SHOWING UPDATED CIRCUITING.
E.	LIGHTING:
E.A.	CLEAN ALL EXTERIOR AND INTERIOR SURFACES AT COMPLETION OF PROJECT.
E.B.	PROVIDE NEW LAMPS FOR ALL NON-LED LIGHTING FIXTURES.
E.C.	IDENTIFY ANY NON-OPERATIONAL ITEMS PRIOR TO BEGINNING WORK.

PROJECT DESCRIPTION
THE PROJECT CONSIST OF A WOMEN'S LOCKER ROOM ADDITION TO AN EXISTING POLICE DEPARTMENT. THE ADDITION INCLUDES NEW CONVENIENCE POWER, LED LIGHTING AND LIGHTING CONTROLS.







**○ REFERENCED NOTES:**

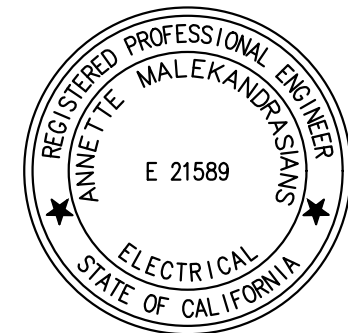
1. EXISTING BRANCH CIRCUIT PANELBOARD TO BE REPLACED WITH NEW IN EXISTING LOCATION.
2. CONNECT TO EXISTING UNDERGROUND FEEDER.
3. PANEL IN LOCKER BUILDING.
4. FEEDER ROUTED ABOVE ACCESSIBLE CEILING.
5. FEEDER PULL BOX ABOVE ACCESSIBLE CEILING.

570 W BONITA AVE,  
LAREMONT, CA 91711

Project number	17668
Date	11/22/24
Drawn by	DS

E1.00

Scale	AS NOTED
-------	----------



RENOVATION NOTES:

- A. GENERAL:  
A.A. MODIFY EXISTING INSTALLATIONS TO ACCOMMODATE THE RENOVATION.  
A.B. RE-SUPPORT EXISTING ELECTRICAL INSTALLATION TO REMAIN WHERE THE DEMOLITION HAS AFFECTED THE SUPPORTS.  
A.C. IDENTIFY ANY IMPROPERLY SUPPORTED ITEMS PRIOR TO BEGINNING WORK.  
A.D. MAINTAIN CONTINUITY TO ALL ELECTRICAL ITEMS THAT ARE TO REMAIN.
- B. DEMOLITION:  
B.A. REMOVE ALL ELECTRICAL ITEMS AND ASSOCIATED APPURTENANCES TO SOURCE OF SUPPLY.  
B.B. WHERE EMBEDDED IN CONCRETE, CUT CONDUITS FLUSH WITH CONCRETE AND CAP. PROVIDE BLANK COVER PLATES FOR BOXES.  
B.C. WHERE REQUIRED, MAINTAIN ACCESS TO ALL ACTIVE ELECTRICAL INSTALLATIONS.  
B.D. REMOVE ALL ITEMS FROM PROJECT SITE.
- C. FINISHES:  
C.A. PATCH SURFACES AND CLOSE OPENINGS RESULTING FROM DEMOLITION OR REMOVAL OF EQUIPMENT.  
C.B. REPAIR SURFACES AND OPENINGS WITH METHODS SUITABLE FOR MAINTAINING EXISTING FIRE, SOUND AND WATERPROOF RATINGS.  
C.C. REPAIR AND REFINISH SURFACES BY SKILLED MECHANICS OF TRADES INVOLVED.
- D. PANELBOARDS:  
D.A. CLEAN EXPOSED SURFACES AND CHECK TIGHTNESS OF ELECTRICAL CONNECTIONS.  
D.B. PROVIDE BLANK PLATES FOR VACANT POSITIONS.  
D.C. TRACE BRANCH CIRCUITS SERVING THE AREA TO BE RENOVATED.  
D.D. PROVIDE TYPED CIRCUIT DIRECTORY SHOWING UPDATED CIRCUITING.

REFERENCED POWER NOTES:

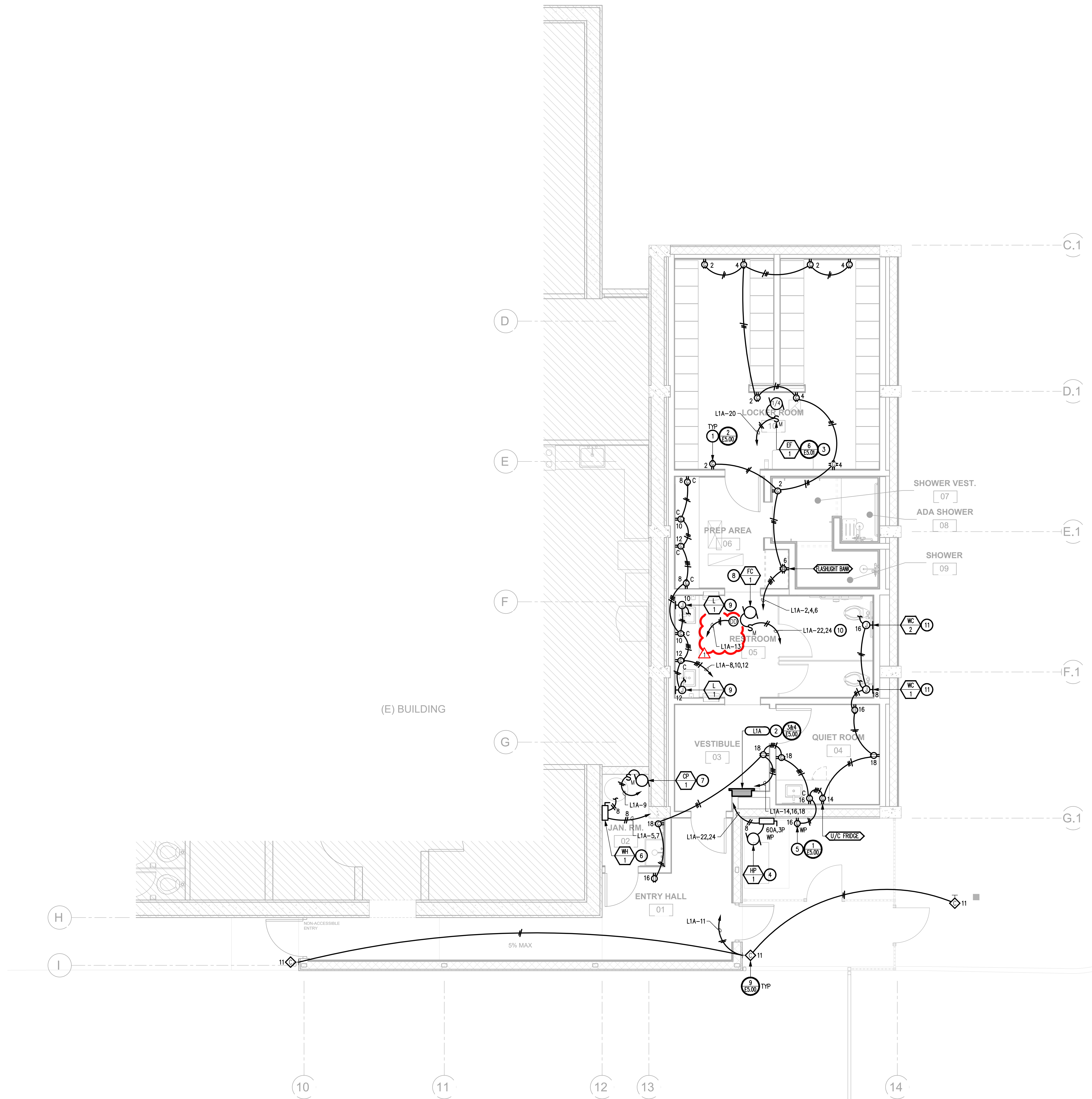
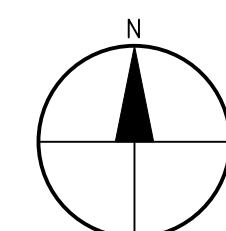
1. CONVENIENCE RECEPTACLE.
2. BRANCH CIRCUIT PANELBOARD.
3. EXHAUST FAN.
4. PACKAGED HEAT PUMP UNIT.
5. GFI, WEATHER RESISTANT AND WEATHER PROOF MAINTENANCE RECEPTACLE.
6. ELECTRIC WATER HEATER.
7. CIRCULATING PUMP.
8. FAN COIL UNIT.
9. PROVIDE A CONNECTION TO LAVATORY SENSOR ACTIVATED FAUCETS.
10. WIRE INDOOR UNIT CIRCUIT THROUGH OUTDOOR UNIT.
11. PROVIDE A CONNECTION TO TOILET SENSOR ACTIVATED FLUSH VALVE.

GENERAL NOTES:

1. EXISTING CIRCUITS TAKEN FROM EXISTING DOCUMENTATION AND LABELING. SHOWN FOR REFERENCE ONLY. ELECTRICAL CONTRACTOR TO CONFIRM BY TRACING AND INCLUDE WITH AS BUILT DOCUMENTATION.
2. FIRE ALARM IS DESIGN BUILD. REFER TO FIRE ALARM NOTES ON E-000.
3. CONFIRM EXACT LOCATION OF DEVICES WITH ARCHITECTURAL DRAWINGS PRIOR TO ROUGH-IN.

RENOVATION SYMBOLS:

- EXIST EQUIPMENT/RACEWAYS TO REMAIN  
----- EXIST EQUIPMENT/RACEWAYS TO BE REMOVED  
----- NEW EQUIPMENT/RACEWAYS



CLAREMONT PD  
ADDITION

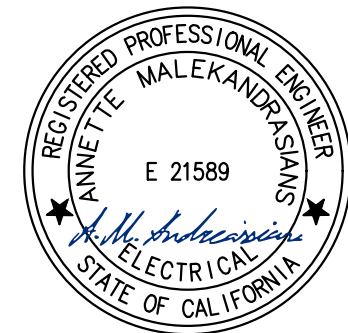
CITY OF CLAREMONT  
570 W BONITA AVE,  
CLAREMONT, CA 91711

POWER  
PLANS

Project number 17668  
Date 11/22/24  
Drawn by DS

E2.00

Scale 1/4"=1'-0"



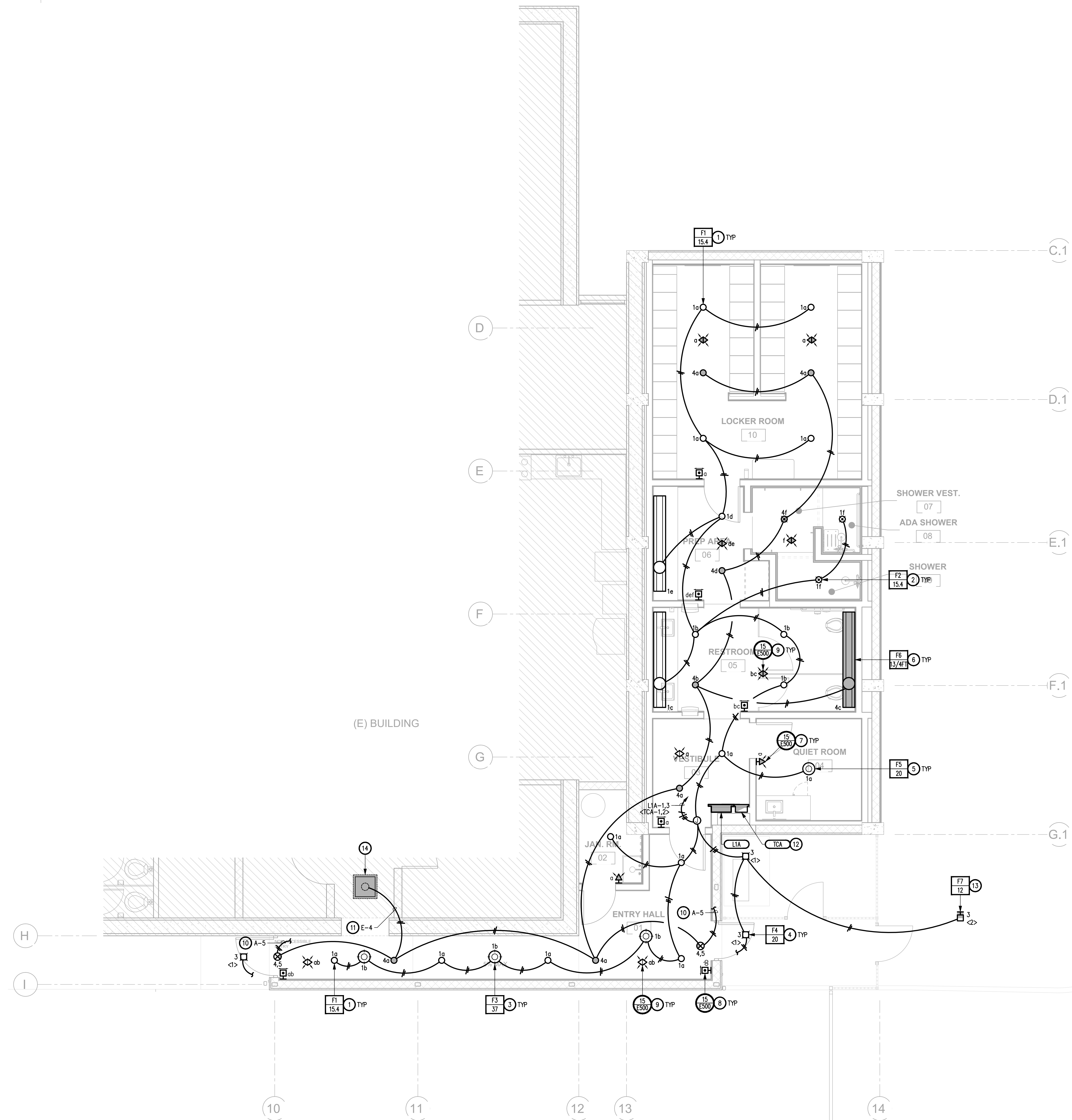
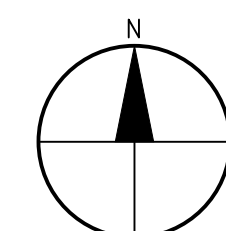
- RENOVATION NOTES:
- A. GENERAL:  
A.A. MODIFY EXISTING INSTALLATIONS TO ACCOMMODATE THE RENOVATION.  
A.B. RE-SUPPORT EXISTING ELECTRICAL INSTALLATION TO REMAIN WHERE THE DEMOLITION HAS AFFECTED THE SUPPORTS.  
A.C. IDENTIFY ANY IMPROPERLY SUPPORTED ITEMS PRIOR TO BEGINNING WORK.  
A.D. MAINTAIN CONTINUITY TO ALL ELECTRICAL ITEMS THAT ARE TO REMAIN.
- B. DEMOLITION:  
B.A. REMOVE ALL ELECTRICAL ITEMS AND ASSOCIATED APPURTENANCES TO SOURCE OF SUPPLY.  
B.B. WHERE EMBEDDED IN CONCRETE, CUT CONDUITS FLUSH WITH CONCRETE AND CAP. PROVIDE BLANK COVER PLATES FOR BOXES.  
B.C. WHERE REQUIRED, MAINTAIN ACCESS TO ALL ACTIVE ELECTRICAL INSTALLATIONS.  
B.D. REMOVE ALL ITEMS FROM PROJECT SITE.
- C. FINISHES:  
C.A. PATCH SURFACES AND CLOSE OPENINGS RESULTING FROM DEMOLITION OR REMOVAL OF EQUIPMENT.  
C.B. REPAIR SURFACES AND OPENINGS WITH METHODS SUITABLE FOR MAINTAINING EXISTING FIRE, SOUND AND WATERPROOF RATINGS.  
C.C. REPAIR AND REFINISH SURFACES BY SKILLED MECHANICS OF TRADES INVOLVED.
- D. PANELBOARDS:  
D.A. CLEAN EXPOSED SURFACES AND CHECK TIGHTNESS OF ELECTRICAL CONNECTIONS.  
D.B. PROVIDE BLANK PLATES FOR VACANT POSITIONS.  
D.C. TRACE BRANCH CIRCUITS SERVING THE AREA TO BE RENOVATED.  
D.D. PROVIDE TYPED CIRCUIT DIRECTORY SHOWING UPDATED CIRCUITING.

- REFERENCED LIGHTING NOTES:
- LED RECESSED DOWNLIGHT FIXTURE.
  - LED RECESSED WEATHERPROOF DOWNLIGHT FIXTURE.
  - LED DECORATIVE PENDANT MOUNTED LIGHTING FIXTURE.
  - LED EXTERIOR SURFACE MOUNTED LIGHTING FIXTURE.
  - LED SURFACE MOUNTED LIGHTING FIXTURE.
  - LED COVE LIGHTING FIXTURE.
  - LOW VOLTAGE WALL POD CONTROL STATION OCCUPANCY SENSOR WITH ON/OFF AND RAISE/LOWER PUSH BUTTONS.
  - LOW VOLTAGE WALL POD CONTROL STATION WITH ON/OFF, RAISE/LOWER PUSH BUTTONS.
  - DUAL TECHNOLOGY CEILING MOUNTED OCCUPANCY SENSOR. PROVIDE TEMP/HUMIDITY OPTION IN SHOWER AREAS.
  - INTERCEPT AND EXTEND EXISTING NORMAL LIGHTING CIRCUIT. CIRCUIT NUMBER TAKEN FROM EXISTING DOCUMENTATION AND LABELING. SHOWN FOR REFERENCE ONLY. CONTRACTOR TO TRACE AND CONFIRM CIRCUIT BACK TO SOURCE. UPDATE PANEL SCHEDULE, LABEL ACCORDINGLY AND INCLUDE WITH AS BUILT DOCUMENTATION.
  - INTERCEPT AND EXTEND EXISTING EMERGENCY LIGHTING CIRCUIT SERVING THIS AREA. THRU NEW LIGHTING CONTROL. CIRCUIT NUMBER TAKEN FROM EXISTING DOCUMENTATION AND LABELING. SHOWN FOR REFERENCE ONLY. CONTRACTOR TO TRACE AND CONFIRM CIRCUIT BACK TO SOURCE. UPDATE PANEL SCHEDULE, LABEL ACCORDINGLY AND INCLUDE WITH AS BUILT DOCUMENTATION.
  - WIRE EXTERIOR LIGHTING CIRCUIT THRU ASTRONOMIC TIMECLOCK. ASTRONOMIC TIMECLOCK TO BE MOUNTED IN RECESSED CABINET. INTERMATIC ET90000 SERIES.
  - LED BOLLARD LIGHTING FIXTURE.
  - EXISTING HALLWAY LIGHTING FIXTURE.

- GENERAL NOTES:
- EXISTING CIRCUITS TAKEN FROM EXISTING DOCUMENTATION AND LABELING. SHOWN FOR REFERENCE ONLY. ELECTRICAL CONTRACTOR TO CONFIRM BY TRACING AND INCLUDE WITH AS BUILT DOCUMENTATION.
  - CONFIRM EXACT LOCATION OF DEVICES WITH ARCHITECTURAL DRAWINGS PRIOR TO ROUGH-IN.

RENOVATION SYMBOLS

- EXIST EQUIPMENT/RACEWAYS TO REMAIN  
----- EXIST EQUIPMENT/RACEWAYS TO BE REMOVED  
----- NEW EQUIPMENT/RACEWAYS



CLAREMONT PD  
ADDITION

CITY OF CLAREMONT

570 W BONITA AVE,  
CLAREMONT, CA 91711

LIGHTING  
PLAN

Project number 17668

Date 11/22/24

Drawn by DS

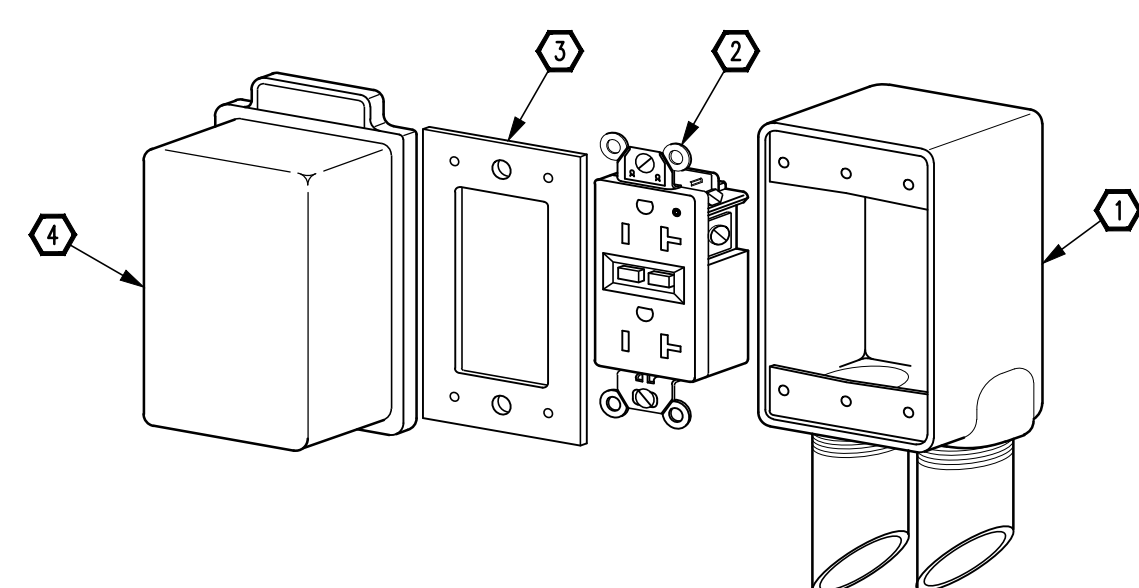
E3.00

Scale 1/4"=1'-0"

208/120 VOLTS NEW PANEL L1A												100 AMP MAIN BREAKER											
3 PHASE LOCATION VESTIBULE 03												100 AMP BUSSING											
4 WIRE SCA 1,575												100% NEUTRAL BUS											
LOCATION												LOCATION											
	VA	VB	VC	LCL	REC	MS	CKT	BRKR					VA	VB	VC								
LIGHTING RMS 01-10	454			24			1	20-1				20-1	2	5	205								
LIGHTING EXTERIOR	60			3			3	20-1				20-1	4	5	300								
JAN RM 02 WATER HEATER	3750			M			5	50A				20-1	6	2	360								
JAN RM 02 CIRCULATING PUMP	62			1			9	20-1				20-1	8	2	360								
CARD READER	150			3			11	20-1				20-1	10	1	2								
DUCT SMOKE DETECTOR	50						13	20-1				20-1	12	1	2								
SPARE	0						15	20-1				20-1	14	1	700								
SPARE	0						17	20-1				20-1	16	1	4								
SPARE	0						19	20-1				20-1	18	1	4								
SPARE	0						21	20-1				20-1	20	1	587								
SPARE	0						23	20-1				20-1	22	1	50A								
SPARE	0						25	20-1				20-1	24	1	3640								
SPARE	0						27	20-1				20-1	26										
SPARE	0						29	20-1				20-1	28										
SPARE	0						31	20-1				20-1	30										
SPARE	0						33	20-1				20-1	32										
SPARE	0						35	20-1				20-1	34										
SPARE	0						37	20-1				20-1	36										
SPARE	0						39	20-1				20-1	38										
SPARE	0						41	20-1				20-1	40										
SPARE	0						43	20-1				20-1	42										
FA = 5821 VA FB = 5972 VA FC = 5180 VA																							
CONNECTED LOAD: 21983 VA OR 61.0 AMPS AT 208 VOLTS - 3Ø																							
LCL = 1994 VA X 25% = 1991 VA																							
RECEPTACLE LOAD = 5789 VA OR 16.0 AMPS @ 208 VOLTS - 3Ø																							
TOTAL CONNECTED LOAD: 21983 VA OR 61.0 AMPS @ 208 VOLTS - 3Ø																							
FDL = 23974 VA OR 66.5 AMPS																							

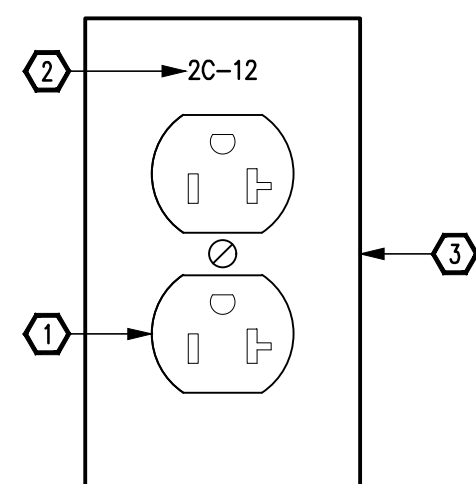
208/120 VOLTS NEW PANEL AA												150 AMP MAIN BREAKER											
3 PHASE LOCATION DETECTIVES RM 22												225 AMP BUSSING											
4 WIRE SCA 2,048												100% NEUTRAL BUS											
LOCATION												LOCATION											
	VA	VB	VC	LCL	REC	MS	CKT	BRKR					VA	VB	VC								
DARK RM. & MUS. LTS	715			7			1	20-1				20-1	2	2	2	205							
CLOSET LIGHTS	840			2			3	20-1				20-1	4	2	360								
SPARE	0						5	20-1				20-1	6										
END BLK HTR	1500						7	20-1				20-1	8										
SPARE	0						9	20-1				20-1	10										
SPARE	0						11	20-1				20-1	12										
JAIL WASHER	800						13	20-1				20-1	14										
JAIL WASHER DRYER	4992						15	60A				20-1	16										
SPARE	0						17	20-1				20-1	18										
SPARE	0						19	20-1				20-1	20										
SPARE	0						21	20-1				20-1	22										
SPARE	0						23	20-1				20-1	24										
SPARE	0						25	20-1				20-1	26										
SPARE	0						27	20-1				20-1	28										
SPARE	0						29	20-1				20-1	30										
SPARE	0						31	20-1				20-1	32										
SPARE	0						33	20-1				20-1	34										
SPARE	0						35	20-1				20-1	36										
SPARE	0						37	20-1				20-1	38										
SPARE	0						39	20-1				20-1	40										
SPARE	0						41	20-1				20-1	42										
FA = 11916 VA FB = 5972 VA FC = 15972 VA																							
CONNECTED LOAD: 41052 VA OR 113.9 AMPS AT 208 VOLTS - 3Ø																							
LCL = 2025 VA X 25% = 513.75 VA																							
RECEPTACLE LOAD = 360 VA OR 1.0 AMPS @ 208 VOLTS - 3Ø																							
TOTAL CONNECTED LOAD: 41052 VA OR 113.9 AMPS @ 208 VOLTS - 3Ø																							
FDL = 41566 VA OR 115.4 AMPS																							

480/277 VOLTS												EXISTING PANEL A												MLO AMP MAIN BREAKER											
3 PHASE												LOCATION RM 48												225 AMP BUSSING											
4 WIRE												AIC EXISTING												100% NEUTRAL BUS											
																								NO 10 BUS											
LOCATION												VA												LOCATION											
	ΦA	ΦB	ΦC	LCL	REC	MS	CKT	BRKR					BRKR	CKT	MS	REC	LCL	VA	ΦB	ΦC															
LIGHTING				2200			23		1	20-1				20-1	2		23	2300							HALLWAY										
DB				2100			13		3	20-1				20-1	4		9		2200						LIGHTING										
LUNCH ROOM EXT SIGN RM 01				2400			15		5	20-1				20-1	6		13		2000						LIGHTING										
PARKING LOT LIGHTS				2400			2		7	20-1				20-1	8		9	1000							FRONT LIGHTS										
PARKING LOT LIGHTS				2080			4		9	20-1				20-1	10		1	1500							EXISTING LOAD										
PARKING LOT LIGHTS					1800		4		11	20-1				20-1	12		1		1500						EXISTING LOAD										
SPACE				0					13					14			0								SPACE										
SPACE				0					15					16			0								SPACE										
SPACE					0				17					18				0							SPACE										



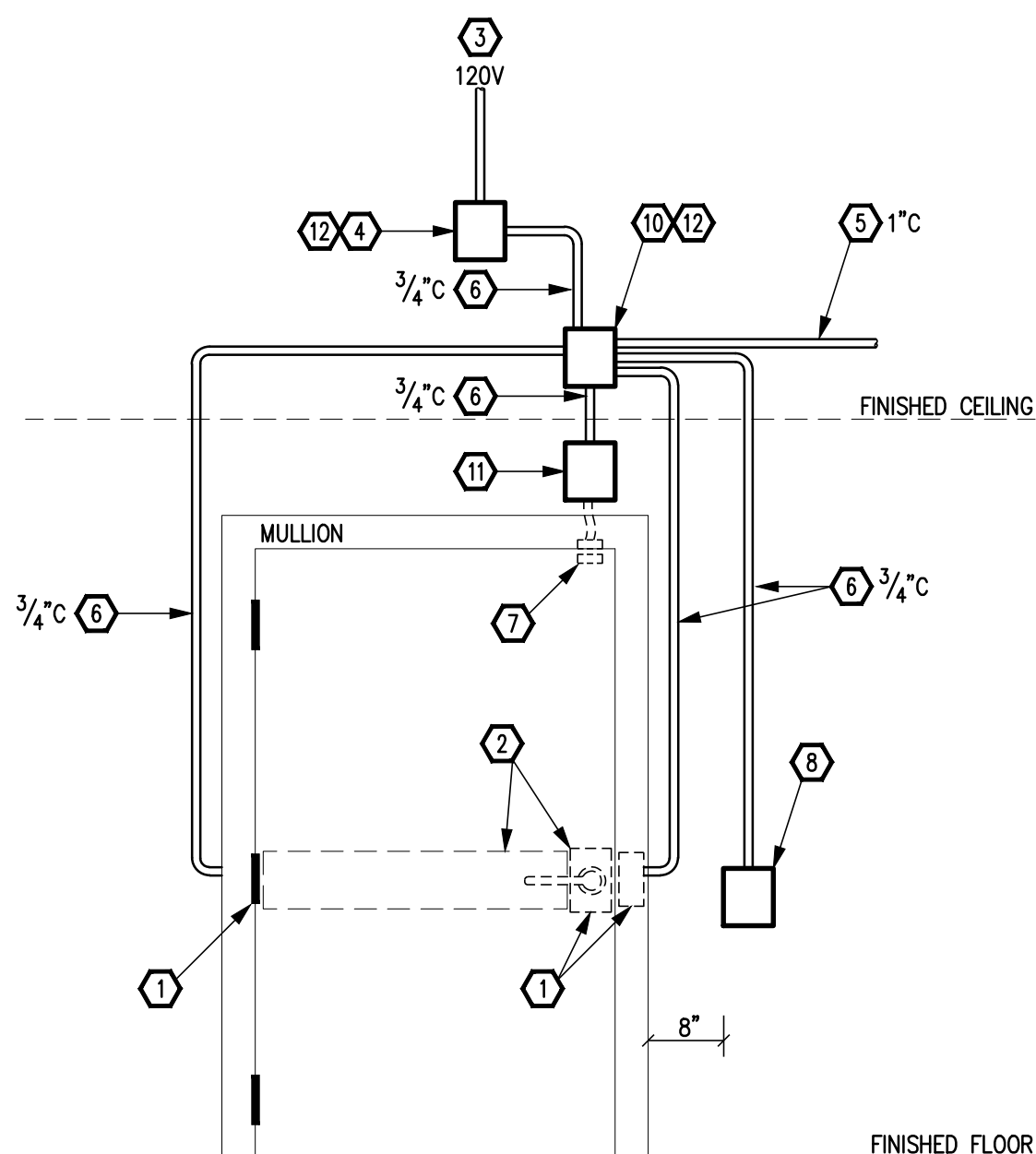
## **1 WEATHERPROOF OUTLET REQUIREMENTS**

NONE



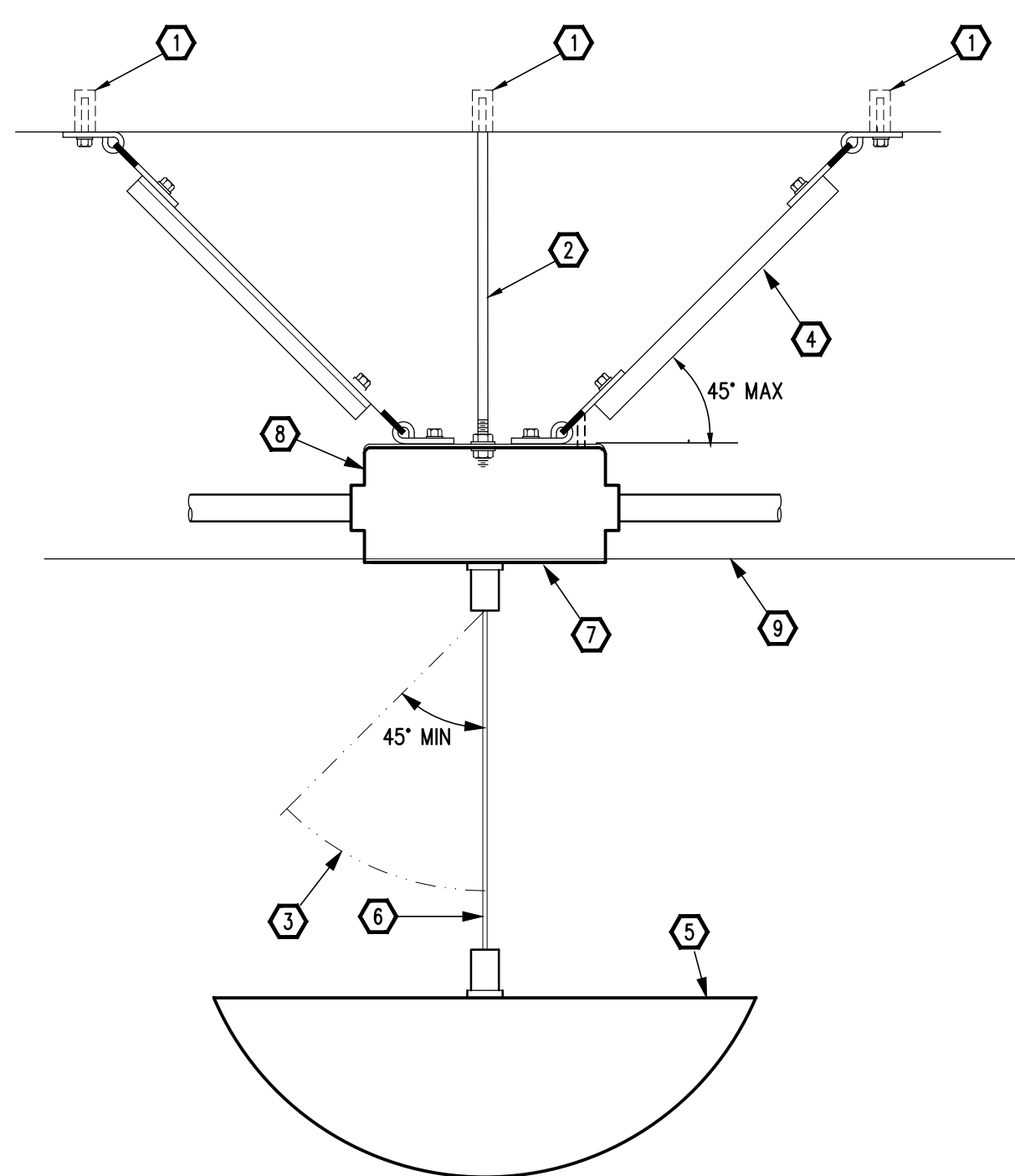
## 2 TYPICAL OUTLET INSTALLATION

NONE



## 9 CARD READER INFRASTRUCTURE REQUIREMENTS

NONE



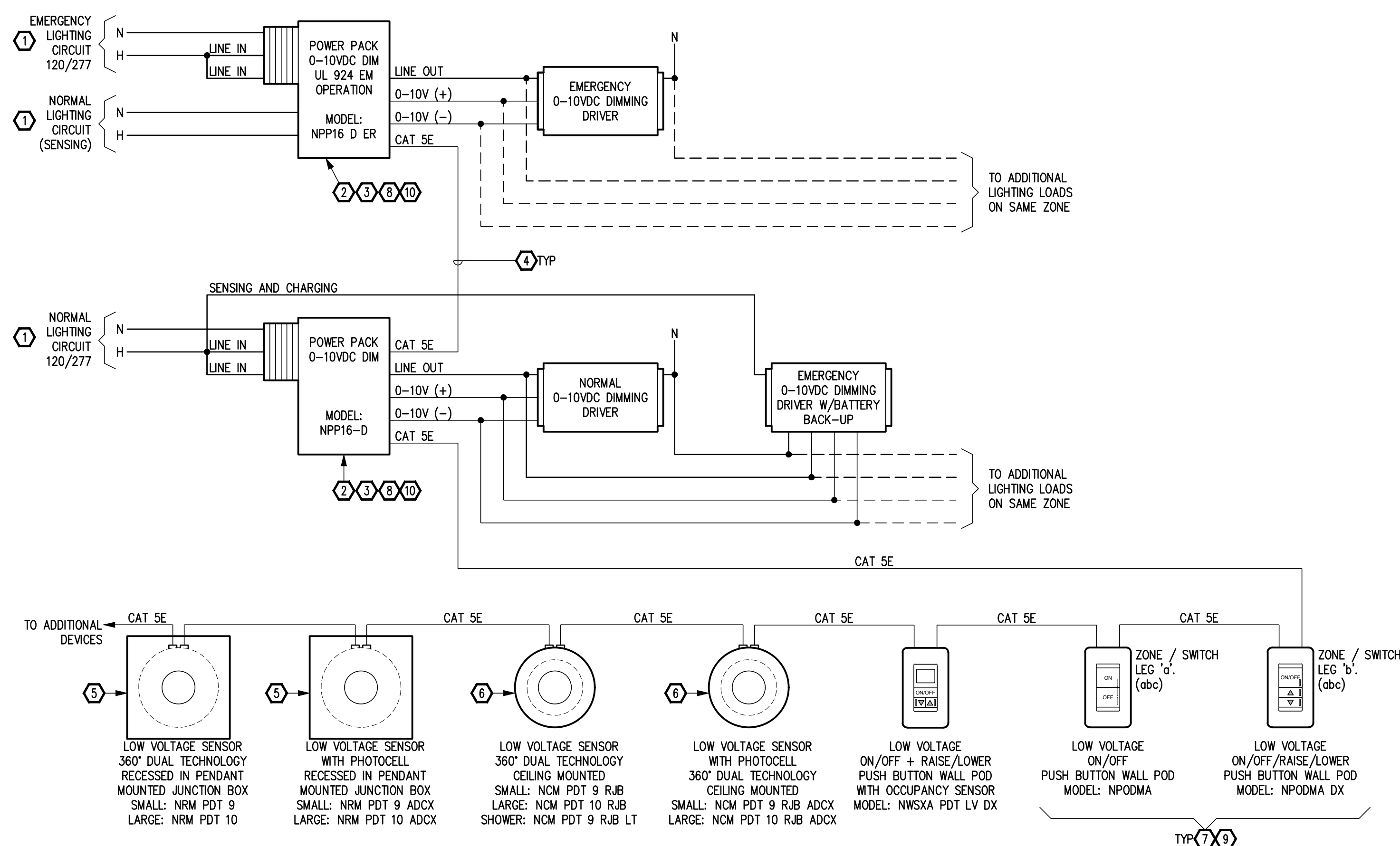
## 10 PENDANT FIXTURE INSTALLATION

NONE



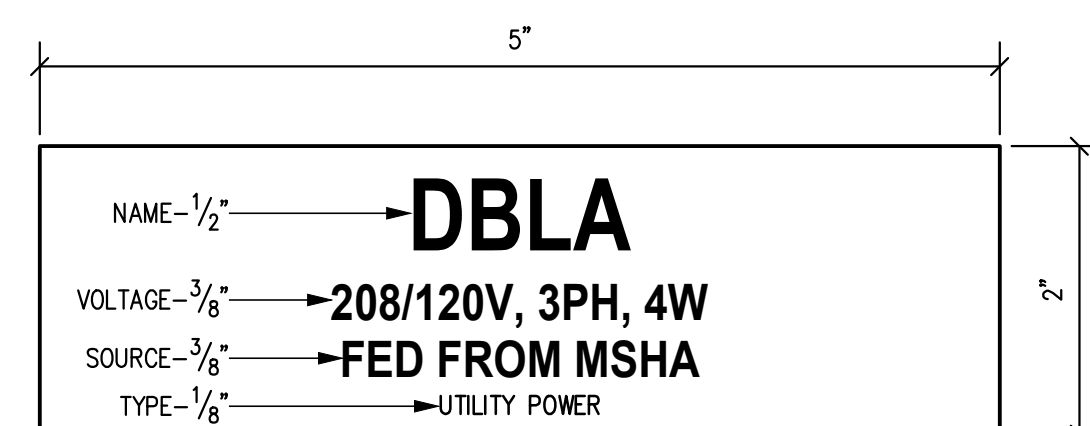
### 3 TYPICAL PANELBOARD

NONE



#### 4 EQUIPMENT NAMEPLATE

NONE



## 15 NLIGHT LIGHTING CONTROL DIAGRAM

NONE

[illegible]CLAREMONT PD  
ADDITION

CITY OF CLAREMONT

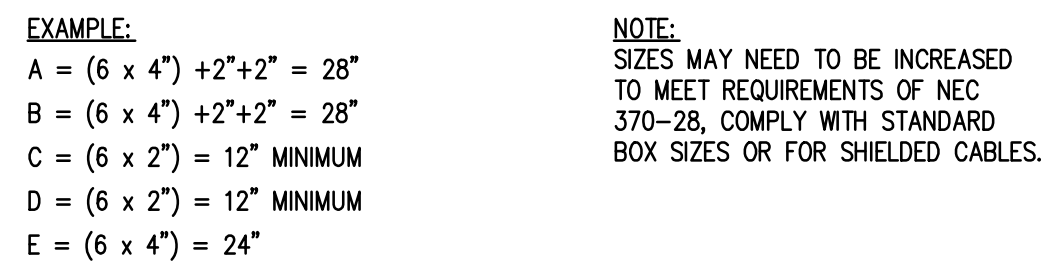
570 W BONITA AVE,  
CLAREMONT, CA 91711

## ELECTRICAL DETAILS

Project number	17668
Date	11/22/24
Drawn by	DS

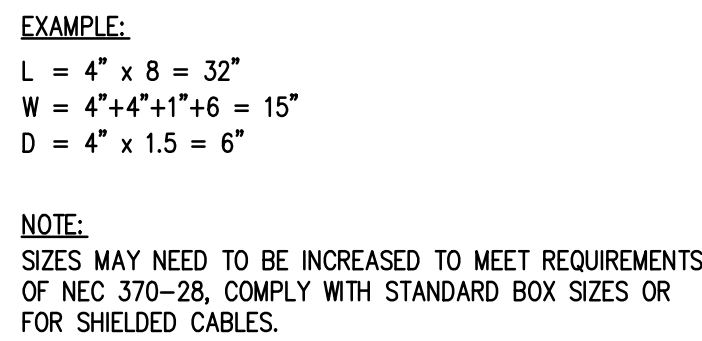
E5.00

Scale	NONE
-------	------



## 1 PULL BOX SIZING LESS THAN 600V

NONE



**SIZING JUNCTION BOXES FOR "V" PULLS**

**L** = LARGEST RACEWAY  $\times$  6 + DIAMETER OF ALL OTHER RACEWAYS IN ONE ROW

**W** = TOTAL DIAMETER OF ALL RACEWAYS IN ONE ROW IN THAT ROW  $\times$  2

**D** = LARGEST RACEWAY IN EACH ROW  $\times$  1.5

**EXAMPLE:**

$L = 6 \times 2" + 12" + 11" + 11" = 15"$

$W = 2" + 1" + 1" + 1" = 5 \times 2 = 10"$

$D = 2" \times 1.5 = 3"$

**NOTE:**

SIZES MAY NEED TO BE INCREASED TO MEET REQUIREMENTS OF NEC 370-28 COMPLY WITH STANDARD BOX SIZES OR FOR SHIELDED CABLES.

A technical drawing of a mechanical assembly. It features a base plate with a horizontal surface and a vertical surface. A cylindrical component (3) is mounted on the horizontal surface. A bracket (4) is attached to the vertical surface. A long, thin plate (2) is positioned diagonally, supported by a roller (6) on the horizontal surface and a pin (7) at the top. A dashed line indicates the original position of the plate. A 45° MAX angle is shown between the plate and the horizontal surface. Callout 5 points to a small component on the plate, and callout 1 points to the top of the plate.

1. THREADED HANGAR ROD SIZE TO MEET INSTALLED LOAD REQUIREMENTS.  $\frac{3}{8}$ " MINIMUM.
2. TRANSVERSE ROD BRACE,  $1\frac{1}{8}$ " SOLID CHANNEL MINIMUM. ALTERNATE: ALONG LENGTH OF CONDUIT RUN, BRACE ANGLE SHALL NOT BE GREATER THAN 45 DEGREE TO THE HORIZONTAL.
3. CONDUIT SUPPORT,  $1\frac{1}{8}$ " CHANNEL MINIMUM.
4. ADJUSTABLE HINGE SIZED SWAY BRACE ATTACHMENT FIT.
5. ATTACHMENT TO STRUCTURE MUST BE FOR INSTALLED LOAD REQUIREMENTS. COORDINATE STRUCTURE TYPE WITH ARCHITECTURAL AND STRUCTURAL DOCUMENTS.
6. CONDUIT CLAMP.
7. IN ADDITION TO THE TRANSVERSE BRACE, PROVIDE A LONGITUDINAL BRACE WITH A  $7\frac{1}{2}$ "-Ø MAXIMUM LENGTH AT A MAXIMUM ANGLE OF 45 DEGREE.

B LINE  
POWER STRUT

1. PER MANUFACTURER'S RECOMMENDATION FOR TWO TIMES THE DEFLECTION ALLOWED IN THE STRUCTURAL DESIGN.
2. SIZE THE DEFLECTION / EXPANSION FITTING TO ALLOW TWO TIMES THE DEFLECTION ALLOWED IN THE STRUCTURAL DESIGN. USE A COMBINATION OF FITTING WHERE REQUIRED.
3. EXTERNAL BONDING JUMPER.
4. INTERNAL BONDING JUMPER.

## 6 MANUAL MOTOR STARTER CONTROL DIAGRAM

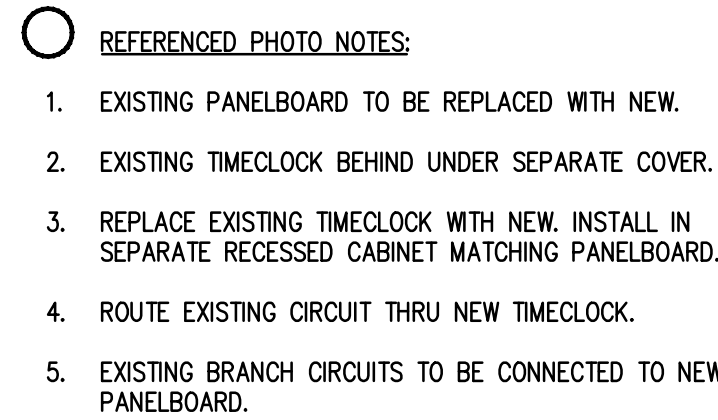
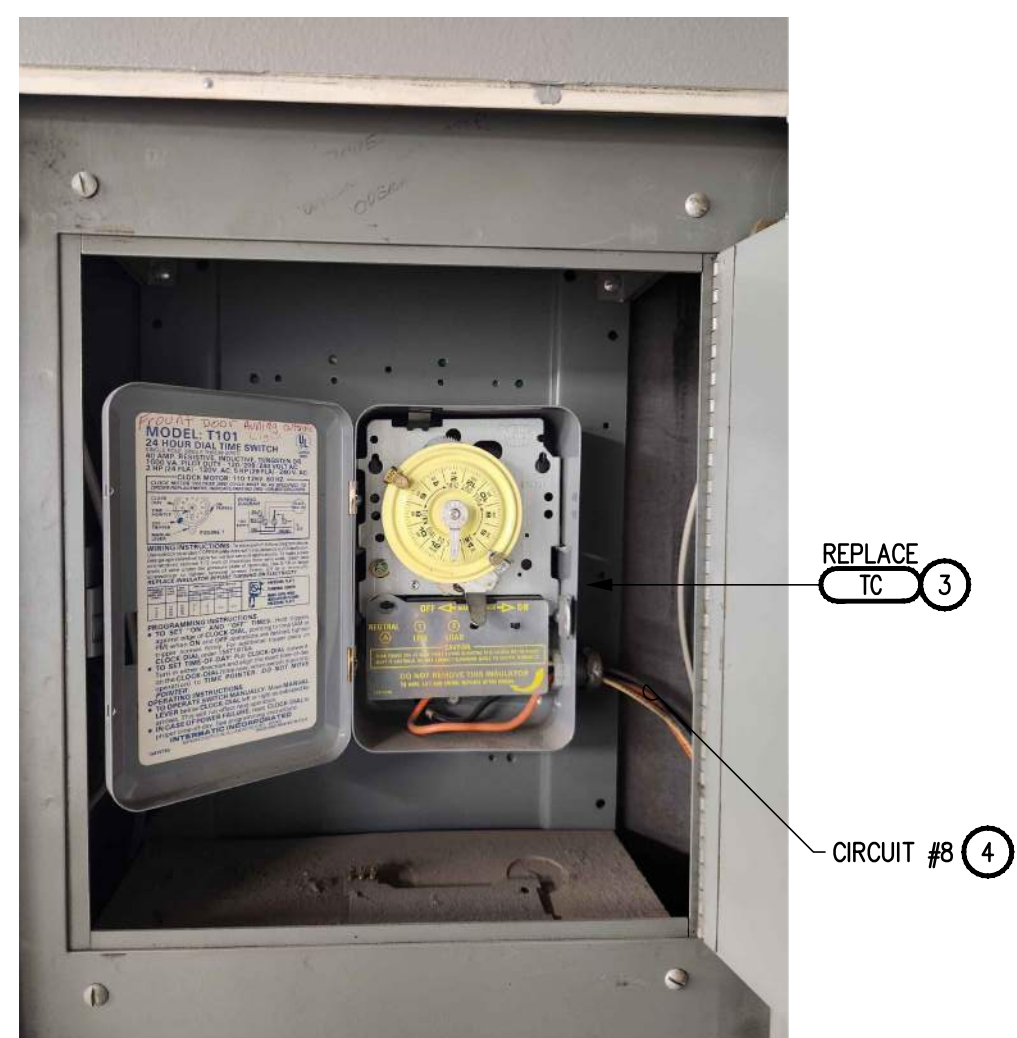
NONE

## 7 COMBINATION EXPANSION/DEFLECTION FITTING

NONE

## 8 CONDUIT TRAPEZE REQUIREMENTS

NONE



## 15 EXISTING PANELBOARD AND TIMECLOCK

NONE



Scale	NONE
-------	------


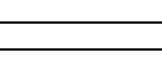



CA Building Energy Efficiency Standards - 2022 Nonresidential Compliance	Report Version: 2022.0.000 Schema Version: rev 20220101	Compliance ID: 228334-1124-0008 Report Generated: 2024-11-18 12:49:57
--	--	--

CA Building Energy Efficiency Standards - 2022 Nonresidential Compliance	Generated Date/Time: 2022.0.000 Schema Version: rev 20220101	Documentation Software: Energy Code Ace Compliance ID: 228334-1124-0008 Report Generated: 2024-11-18 12:49:57
--	---	---

CA Building Energy Efficiency Standards - 2022 Nonresidential Compliance	Report Version: 2022.0.000 Schema Version: rev 20220101	Compliance ID: 228334-1124-0008 Report Generated: 2024-11-18 12:49:57
--	--	--

CA Building Energy Efficiency Standards - 2022 Nonresidential Compliance	Report Version: 2022.0.000 Schema Version: rev 20220101	Compliance ID: 228334-1124-0008 Report Generated: 2024-11-18 12:49:57
--	--	--

OFFICE OF CALIFORNIA		CALIFORNIA ENERGY COMMISSION	
Indoor Lighting			
CERTIFICATE OF COMPLIANCE		MISC-07-14	
Project Name: CTS color Rooms		Report Date: (Page 8 of 8)	
Project Address: 570 W. BONITA AVE, CLAREMONT, CA 91711		Date Prepared: 2024-11-18T15:49:55-07:00	
City/County: Pasadena, CA 91103			
DOCUMENTATION AUTHORITY'S DECLARATION STATEMENT			
I certify that this Certificate of Compliance documentation is accurate and complete.			
Documentation Authority Name: Julio Morones		Documentation Authority Signature: 	
Company: SSE Consulting Electrical Engineers		Signature Date: 2024.11.18	
Address: 3016 E. Colorado Blvd. #240		CAV WERS certification (If applicable)	
City/County: Pasadena, CA 91103		Phone: (626) 947-3306	
RESPONSIBLE PERSON'S DECLARATION STATEMENT			
I certify the following under penalty of perjury, under the laws of the State of California:			
<ol style="list-style-type: none"><li>The information provided on this Certificate of Compliance is true and correct.</li><li>I am eligible under Division 3 of the Business and Professions Code to accept responsibility for the building design or system design identified on this Certificate of Compliance (responsible designer).</li><li>The energy features and performance specifications, materials, components, and manufactured devices for the building design or system design identified on the Certificate of Compliance conform to the requirements of Title 24, Part 1 and Part 6 of the California Code of Regulations.</li><li>The building design features or system design features identified on this Certificate of Compliance are consistent with the information provided on other applicable compliance documents, worksheets, calculations, plans and specifications submitted to the enforcement agency for approval with this building permit application.</li><li>I affirm herein that a completed signed copy of this Certificate of Compliance will be made available with the building permit(s) issued to the building, and made available to the enforcement agency for all applicable inspections. I understand that a completed signed copy of this Certificate of Compliance must be included with the documentation the documentation the building owner at occupancy.</li></ol>			
Responsible Person Name: Julio Morones			
Signature: 			
Company: SSE Consulting Engineers			
Address: 3016 E. Colorado Blvd.			
City/County: Pasadena, CA 91103			
Date Signed: 2024.11.18			
Responsible Person Signature: 			
Date Signed: E 21589			
Phone: (626) 947-0088			
Generated Date/Time: Documentation Software: Energy Code Ace			
CA Building Energy Efficiency Standards - 2022 Nonresidential Compliance			
Report Version: 2022.0000		Commission Code: 2283434-1234-0008	
Schema Version: v6-20220101		Report Generated: 2024-11-18 12:49:57	

[illegible]

<div>CLAREMONT PD ADDITION</div> <div>CITY OF CLAREMONT</div> <div>570 W BONITA AVE, CLAREMONT, CA 91711</div>	
<div>ENERGY COMPLIANCE FORMS</div> <div>Project number 17668 Date 11/22/24 Drawn by DS</div> <div>E6.00</div> <div>Scale NONE</div>	

STATE OF CALIFORNIA		CALIFORNIA ENERGY COMMISSION	
<b>Outdoor Lighting</b>			
<b>CERTIFICATE OF COMPLIANCE</b> NRE-170-2			
This document is used to demonstrate compliance with requirements in 130.9, 130.9, 130.2, 140.7, and 141.00(2) for outdoor lighting scopes using the prescriptive path for nonresidential and hotel/motel occupancies. It is also used to document compliance with requirements in 160.5, 170.2(e), 180.1(a) and 180.2(b)(4) for outdoor lighting scopes using the prescriptive path for multifamily and mixed-use occupancies. Multifamily includes dormitories and senior living facilities.			
Project Name: CPD Locker Rooms - Exterior		Report Page:	(Page 1 of 7)
Project Address: 570 W. BONITA AVE., CLAREMONT, CA 91711		Date Prepared:	2024-11-21T19:43:58-08:00
<b>A. GENERAL INFORMATION</b>			
01 Project Location (City)	Claremont	04 Total Illuminated Hardcape Area (ft <sup>2</sup> )	240
02 Climate Zone	9	05 Is your alteration increasing the connected lighting load (Watts)?	<input checked="" type="radio"/> Yes <input type="radio"/> No
03 Outdoor Lighting Zone per Title 24 Part 1 10-114 or as Designated by Authority Having Jurisdiction (AHJ): <input type="checkbox"/> L2-C Very Low - Underserved Portland   <input type="checkbox"/> L2-D Moderate - Urban Clusters   <input checked="" type="checkbox"/> L2-E High - Must be reviewed by CA Energy Commission for Approval <input type="checkbox"/> L2-L Low - Rural Areas   <input checked="" type="checkbox"/> L2-S Moderately High - Urban Areas			
05 Occupancy Types within Project			
<input checked="" type="checkbox"/> Office			
<b>B. PROJECT SCOPE</b>			
This table includes outdoor lighting systems that are within the scope of the permit application and are demonstrating compliance using the prescriptive path outlined in 140.7 / 170.2(c) or 141.00(2) & 180.2(b)(4) for porches.			
<b>My Project Consists of:</b>			
01	02		
00 New Lighting System	Must Comply with Allowances from 140.7 / 170.2(c)&		
<input checked="" type="checkbox"/> Altered Lighting System	<input type="radio"/> Yes <input checked="" type="radio"/> No		
03 % of Existing Luminaire Being Altered?	04 Sum Total of Luminaires Being Added or Altered	05 Calculation Method	
<input type="checkbox"/> < 10% <input type="checkbox"/> >= 10% and < 50% <input checked="" type="checkbox"/> >= 50%			
Please proceed to Table F, Outdoor Lighting Fixture Schedule to define the project's luminaires.			
FOOTNOTES: % of Existing Luminaires Being Altered = (Sum Total of Luminaires Being Added or Altered / Existing Luminaires within the Scope of the Permit Application) x 100.			
Generated Date/Time:		Documentation Software: Energy Code Ace	
CA Building Energy Efficiency Standards - 2022 Nonresidential Compliance		Compliance ID: 232488-1134-0006	
Schema Version: rev 20231001		Report Generated: 2024-11-21 16:43:56	

STATE OF CALIFORNIA		CALIFORNIA ENERGY COMMISSION					
<b>Outdoor Lighting</b>							
<b>CERTIFICATE OF COMPLIANCE</b> NRE-170-2							
Project Name: CPD Locker Rooms - Exterior		Report Page:	(Page 1 of 7)				
		Date Prepared:	2024-11-21T19:43:58-08:00				
<b>I. LIGHTING POWER ALLOWANCE (per 140.7 / 170.2(c))</b>							
This table includes areas using allowance calculations per 140.7 / 170.2(c). General Hardcape Allowance is per Table 140.7-A/Table 170.2-A while "Use it or lose it" allowances are per Table 140.7-B/Table 170.2-B. Indicate which allowance is being used to expand sections for user input. Luminaires that qualify for one of the "Use it or lose it" allowances shall not qualify for another "Use it or lose it" allowance. Outdoor lighting attached to multifamily buildings and controlled from the inside of a dwelling unit are included in Table H, and are not included here. All other multifamily outdoor lighting is included here.							
Calculated General Hardcape Lighting Power Allowance per Table 140.7-A for Nonresidential & Hotel/Motel							
02	03	04	05	06	07	08	09
Area Description	Illuminated Area (ft <sup>2</sup> )	Allowed Density (W/ft <sup>2</sup> )	Area (Watts)	Perimeter Length (ft)	Linear Allowance (W/ft)	Linear Allowance (watts)	Total General Area + Linear Allowance (Watts)
HARDSCAPE	240	0.021	5.04	80	0.2	16	23.04
Initial Wattage Allowance for Entire Site (Watts):							250
Instances of Initial Wattage Allowance (L2 only) <sup>1</sup>							
Total General Hardscape Allowance (Watts):							271.04
<b>J. LIGHTING ALLOWANCE, PER APPLICATION</b>				This section does not apply to this project.			
<b>K. LIGHTING ALLOWANCE- SALES FRONTAGE</b>				This section does not apply to this project.			
<b>L. LIGHTING ALLOWANCE- ORNAMENTAL</b>				This section does not apply to this project.			

Generated Date/Time:		Documentation Software: Energy Code Ace	
Report Generated: 2023-10-01		Compliance ID: 232488-1134-0006	
Schema Version: rev 2023.001		Report Generated: 2024-11-21 16:43:56	

STATE OF CALIFORNIA

CALIFORNIA ENERGY COMMISSION

**Outdoor Lighting**

CERTIFICATE OF COMPLIANCE

Project Name:CPD Locker Rooms - Exterior

Report Page:NRCC-LTO-4  
(Page 2 of 7)

Date Prepared:2024-11-21T19:43:53-05:00

**C. COMPLIANCE RESULTS**

Results in this table are automatically calculated from data input and calculations in Tables F through N. Note: If any cell on this table says "COMPLIES with Exceptional Conditions" refer to Table D. Exceptional Conditions for guidance or see applicable Table referenced below.

Calculations of Total Allowed Lighting Power (Watts) 140.7 / 170.2(c)(6) or 141.0(b)(2)(L) / 180.2(b)(4)(b)										Compliance Results			
G1	G2	G3	G4	G5	G6	G7		G8	G9				
General Hardscape Allowance 140.7(c)(1) / 170.2(c)(6) (See Table I)	Per Application 140.7(c)(2) / 170.2(c)(6) (See Table J)	+	Sales Frontage 140.7(c)(3) / 170.2(c)(6) (See Table K)	+	Ornamental 140.7(c)(2) / 170.2(c)(6) (See Table L)	+	Per Specific Area 140.7(c)(2) / 170.2(c)(6) (See Table M) OR Existing Power Allowance 141.0(b)(2)(L) / 180.2(b)(4)(b) (See Table N)	+	Total Allowed (Watts)	≥	Total Actual (Watts)	G7 must be ≥ G8	
271.04	+	---	+	---		OR	---	+	271.04	≥	72	COMPLIES	
Shading Compliance (See Table G for Details)													N/A
Controls Compliance (See Table H for Details)													COMPLIES

**D. EXCEPTIONAL CONDITIONS**

This table is auto-filled with unreadable comments because of selections made or data entered in tables throughout the form.

**E. ADDITIONAL REMARKS**

This table includes remarks made by the permit applicant to the Authority Having Jurisdiction.

Generated Date/Time:

Documentation Software: Energy Code Ace

CA Building Energy Efficiency Standards - 2022 Nonresidential Compliance

Report Version: 2022.0.000

Compliance ID: 232498-1124-0006

Schema Version: rev:20220101

Report Generated: 2024-11-21 16:43:56

STATE OF CALIFORNIA

CALIFORNIA ENERGY COMMISSION

**Outdoor Lighting**

CERTIFICATE OF COMPLIANCE

Project Name:CPD Locker Rooms - Exterior

Report Page:NRCC-LTO-4  
(Page 6 of 7)

Date Prepared:2024-11-21T19:43:53-05:00

**M. LIGHTING ALLOWANCE: PER SPECIFIC AREA**

This section does not apply to this project.

**N. EXISTING CONDITIONS POWER ALLOWANCE (alterations only)**

This section does not apply to this project.

**O. DECLARATION OF REQUIRED CERTIFICATES OF INSTALLATION**

Selections have been made based on information provided in this document. If any selection has been changed by permit applicant, an explanation should be included in Table E. Additional Remarks. These documents must be provided to the building inspector during construction and must be completed through an Acceptance Test Technician Certification Provider (ATTCP). For more information visit: <http://www.energy.ca.gov/tbte24/tbttcp/providers.html>

NRCC-LTO-E - Must be submitted for all buildings	Form/Title
--	------------

**P. DECLARATION OF REQUIRED CERTIFICATES OF ACCEPTANCE**

Selections have been made based on information provided in this document. If any selection has been changed by permit applicant, an explanation should be included in Table E. Additional Remarks. These documents must be provided to the building inspector during construction and must be completed through an Acceptance Test Technician Certification Provider (ATTCP). For more information visit: <http://www.energy.ca.gov/tbte24/tbttcp/providers.html>

NRCC-LTO-O2-A - Must be submitted for all outdoor lighting controls except for alterations where controls are added to <= 20 luminaires.	Form/Title	Systems/Spaces To be Field Verified
--	------------	-------------------------------------

Generated Date/Time:

Documentation Software: Energy Code Ace


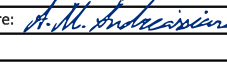
CA Building Energy Efficiency Standards - 2022 Nonresidential Compliance

Report Version: 2022.0.000

Compliance ID: 232498-1124-0006

Schema Version: rev:20220101

Report Generated: 2024-11-21 16:43:56

STATE OF CALIFORNIA		CALIFORNIA ENERGY COMMISSION							
Outdoor Lighting		NMC-474							
CERTIFICATE OF COMPLIANCE		Project Name: CPCLocker Rooms - Exterior							
Report Page:		Date Prepared:							
		2024-11-21T19:43:53 05:00							
F. OUTDOOR LIGHTING FIXTURE SCHEDULE									
The following lighting system demonstrating compliance with 140.7.170.2(c) all new luminaires being installed and any existing luminaires remaining or being moved within the spaces covered by the permit application are included in the Table below. Per alternate lighting system using the Existing Power method per 141.00(2) only new luminaires being installed and replacement luminaires are included as part of the project scope are included (i.e., existing luminaires remaining or existing luminaires being moved are not included). Outdoor lighting attached to multifamily buildings and controlled from the inside of a dwelling unit are included in Table I, and are not included here. All other multifamily outdoor lighting is included here.									
Designed Wattage:									
G1	G2	G3	G4	G5	G6	G7	G8	G9	G10
Name or Item Tag	Complete Luminaire Description	Watts per luminaire <sup>1</sup>	How is Wattage determined	Total Number Luminaires <sup>1</sup>	Luminaire Status <sup>2</sup>	Excluded per 140.71(a) / 170.23(b)(6A)	Design Watts	Cutoff Req., 6,200 initial lumens output (160.28) / 160.5(3)1*	Field Inspector
F4	SURFACE MOUNTED SLOPED CANOPY LED <input type="checkbox"/> Linear	20	Mfr. Spec	3	New	<input type="checkbox"/>	60	NA < 6200 lumens	<input type="checkbox"/>
F7	LED Bollard <input type="checkbox"/> Linear	12	Mfr. Spec	1	New	<input type="checkbox"/>	12	NA < 6200 lumens	<input type="checkbox"/>
Total Design Watts:							72		
* NOTES: Selection with a * require a note in the space below explaining how compliance is achieved.									
1) Cutoff is lighting a room: RECEPTOR >= 180.2(3)									
2) CUTOFF: Authority Having Jurisdiction may ask for Luminaire cut sheets to confirm wattage used for compliance per 180.5(3) 160.5(3)									
3) For linear luminaires, wattage should be indicated or WU method of items Luminaire. Total linear feet should be indicated in column 1 instead of number of luminaires.									
4) Select "New" for new luminaires or a new outdoor lighting project, or for added luminaires in an alteration. Select "Altered" for replacement luminaires in an alteration. Select "Existing to Remain" for existing luminaires within the project scope that are not being altered and are remaining. Select "Existing Replaced" for existing luminaires which are being removed and replaced as part of the project scope.									
6) Compliance with mandatory shielding requirements is required for luminaires with initial lumens output >= 6,200 unless exempted by 180.2(6)									
G. SHIELDING REQUIREMENTS (RUG)									
This section does not apply to this project.									
Generated Date/Time: Documentation Software: Energy Code Ace									
CA Building Energy Efficiency Standards - 2022 Nonresidential Compliance									
Report Version: 2023.0.000									
Schema Version: rev 20201001									
Compliance ID: 232498-1124-0000									
Report Generated: 2024-11-21 16:43:56									
STATE OF CALIFORNIA									
Outdoor Lighting		CALIFORNIA ENERGY COMMISSION							
CERTIFICATE OF COMPLIANCE		NMC-474							
Project Name: CPCLocker Rooms - Exterior		Report Page:							
Project Address: 370 N. KOSTA AVE, CLAREMONT, CA 91711		Date Prepared:							
		2024-11-21T19:43:53 05:00							
DOCUMENTATION AUTHOR'S DECLARATION STATEMENT									
I certify that this Certificate of Compliance documentation is accurate and complete.									
Documentation Author Name: Julia Moreno		Documentation Author Signature: 							
Company: RBE Consulting Electrical Engineers		Signature Date: 2024.11.18							
Address: 3016 E Colorado Blvd #249		SEA 4000 Certification Identification (F applicable)							
City/State/Zip: Pasadena/CA 91107		Phone: (818)727-3568							
RESPONSIBLE PERSON'S DECLARATION STATEMENT									
I verify the following under penalty of perjury under the Seal of the State of California:									
1. The information provided on this Certificate of Compliance is true and correct.									
2. I am a duly sworn Officer of the Bureau and Professionals Code to accept responsibility for the building design or system design identified on this Certificate of Compliance (Ineligible designer).									
3. The energy features and performance specifications, materials, components, and manufactured devices for the building design or system design identified on this Certificate of Compliance comply with the requirements of Title 24, Part 1, and Part 6 of the California Code of Regulations.									
4. The building design features or system design features identified on this Certificate of Compliance are consistent with the information provided on other applicable compliance documents, worksheets, calculations, plans and specifications identified in the referenced agency for approval with this building permit application.									
5. I will ensure that a completed signed copy of this Certificate of Compliance shall be made available with the building permit(s) issued for the building, and made available to the enforcement agency for all applicable inspections. I understand that a completed signed copy of this Certificate of Compliance is required to be included with the documentation by the holder prior to the building permit at occupancy.									
Responsible Designer Name: Annette Madaleno-Rodriguez		Responsible Designer Signature: 							
Company: RBE Consulting Engineers		Sign Date: 2024.11.18							
Address: 3016 E Colorado Blvd #249		Phone: (818) 727-3568							
City/State/Zip: Pasadena/CA 91107		Phone: (818) 207-0088							
Generated Date/Time: Documentation Software: Energy Code Ace									
CA Building Energy Efficiency Standards - 2022 Nonresidential Compliance									
Report Version: 2023.0.000									
Schema Version: rev 20201001									
Compliance ID: 232498-1124-0000									
Report Generated: 2024-11-21 16:43:56									

STATE OF CALIFORNIA

Outdoor Lighting

CERTIFICATE OF COMPLIANCE

Project Name: C2D Locker Rooms - Exterior

CALIFORNIA ENERGY COMMISSION

NCEC-LD04-1

Page 3 of 7

Report Page: 2024-11-21T19:43:53-05:00

Date Prepared:

F. OUTDOOR LIGHTING FIXTURE SCHEDULE

For new or altered lighting systems demonstrating compliance with 140.7 / 170.2(c)(8) all new luminaires being installed and any existing luminaires remaining or being moved within the spaces covered by the permit application are included in the Table below. Per altered lighting systems using the Existing Fixture method per 141.003(2) only new luminaires being installed and replacement luminaires being installed as part of the project scope are included (i.e. existing luminaires remaining or existing luminaires being moved are not included). Outdoor lighting attributed to multifamily buildings and controlled from the inside of a dwelling unit are included in Table H, and are not included here. All other multifamily outdoor lighting is included here.

01	02	03	04	05	06	07	08	09	10
Name or Item Tag	Complete Luminaire Description	Watts per luminaire <sup>1</sup>	How is Wattage determined	Total Number Luminaires <sup>2</sup>	Luminaire Status <sup>3</sup>	Excluded per 140.7(a) / 170.2(a)(6A)	Design Watts	Cutoff Req. > 6,200 initial lumen output (130.2(b) / 160.5(c)(1)*)	Field Inspector
F4	SURFACE MOUNTED SQUARE CANOPY LED <input type="checkbox"/> Linear	20	Mfr. Spec	3	New	<input type="checkbox"/>	60	NA < 6200 lumens	<input type="checkbox"/> Pass <input type="checkbox"/> Fail
F7	LED Bollard <input type="checkbox"/> Linear	12	Mfr. Spec	1	New	<input type="checkbox"/>	12	NA < 6200 lumens	<input type="checkbox"/> Pass <input type="checkbox"/> Fail
Total Design Watts:							72		

\*NOTES: Selections with a \* require a note in the space below explaining how compliance is achieved.  
(E: Luminaires is lighting a entrance. EXCEPTION 2 to 130.2(b))  
1 FOOTNOTES: Authority Having Jurisdiction may ask for Luminaire cut sheets to confirm wattage used for compliance per 130.0(c) / 160.5(b)  
2 FOOTNOTES: For linear luminaires, wattage should be indicated as W/ft instead of Watts/Luminaire. Total linear feet should be indicated in column 05 instead of number of luminaires.  
3 Select "New" for new luminaires in a new outdoor lighting project, or for added luminaires in an alteration. Select "Altered" for replacement luminaires in an alteration. Select "Returned to Remain" for existing luminaires within the project scope that are not being altered and are remaining. Select "Existing Reinstated" for existing luminaires which are being removed and reinstated as part of the project scope.  
\* Compliance with mandatory shielding requirements is required for luminaires with initial lumen output >= 6,200 unless exempted by 130.2(b) / 160.5(c)

G. SHIELDING REQUIREMENTS (BUS)

This section does not apply to this project.

Outdoor Lighting Mandatory Measures:

110.9 OUTDOOR LIGHTING CONTROLS AND COMPONENTS

ALL LIGHTING CONTROL, DEVICES AND SYSTEMS, AND ALL LIGHT SOURCES SHALL MEET THE APPLICABLE REQUIREMENTS OF 110.9.

130.0 GENERAL LUMINAIRE REQUIREMENTS

ALL LUMINAIRES SHALL BE FACTORY-LABELLED PER 130.0(c).

ENERGY MANAGEMENT CONTROL SYSTEMS (EMCS) SHALL MEET REQUIREMENTS OF 130.0(e).

130.2(c) CONTROLS FOR OUTDOOR LIGHTING

ALL OUTDOOR LIGHTING SHALL BE INDEPENDENTLY CONTROLLED FROM OTHER ELECTRICAL LOADS AND SHALL HAVE THE FOLLOWING FEATURES:

1. AUTOMATICALLY TURNS OFF OUTDOOR LIGHTING WHEN DAYLIGHT IS AVAILABLE

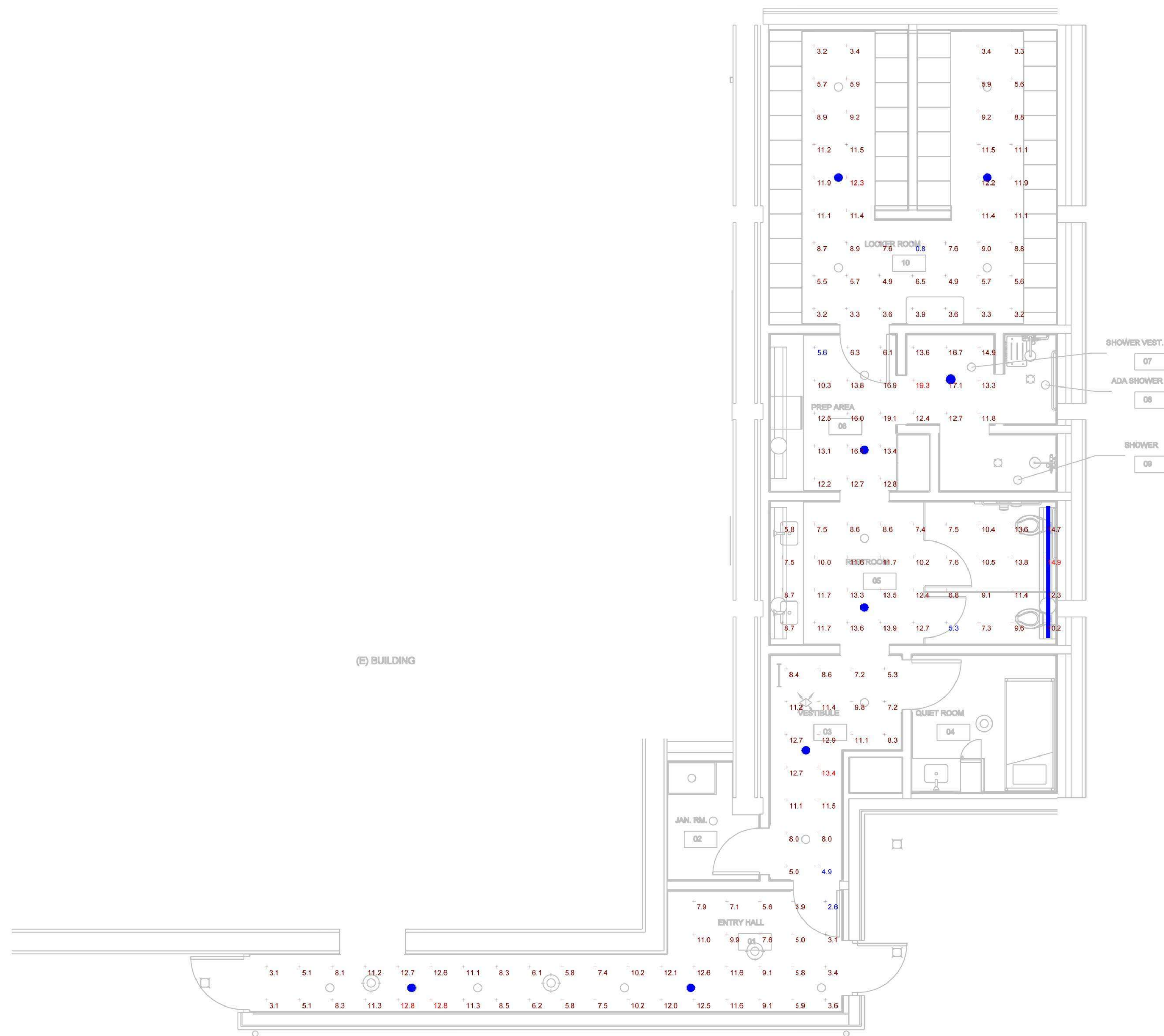
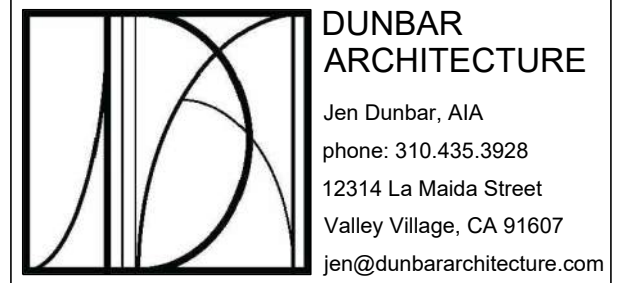
2. AUTOMATIC SCHEDULING CONTROLS

A. AUTOMATIC SCHEDULING CONTROLS SHALL BE INSTALLED FOR ALL OUTDOOR LIGHTING.

B. CAPABLE OF REDUCING LIGHTING POWER AT LEAST 50% AND NO MORE THAN 90% AND SEPARATELY CAPABLE OF TURNING LIGHTING OFF DURING UNOCCUPIED PERIODS

C. THAT ALLOW SCHEDULING OF AT LEAST TWO NIGHTTIME PERIODS WITH INDEPENDENT LIGHTING LEVELS (MAY INCLUDE OVERRIDE FOR NO MORE THAN 2 HOURS)

[illegible]



Schedule										
Symbol	Label	Image	QTY	Manufacturer	Catalog	Description	Number Lamps	Lamp Output	LLF	Input Power
	F1		7	LIGHTOLIER BY SIGNIFY	MARAL15K5WCW-3500K	MODULITE 60 RND DL 1500LM 90 CRI WD CD FINISH 3500K	1	1683	0.92	15.4
	F2		1	LIGHTOLIER BY SIGNIFY	MARAL15K5WCW-3500K	MODULITE 60 RND DL 1500LM 90 CRI WD CD FINISH 3500K	1	1683	0.92	15.4
	F6		2	SIGNIFY - LANGLEY CA	490BL93515Qwxd4	LEDALITE - TRUGROOVE PERIMETER	88	17	0.92	13.7

Statistics						
Description	Symbol	Avg	Max	Min	Max/Min	Avg/Min
LOCKER ROOM 10	+	7.2 fc	12.3 fc	0.8 fc	15.4:1	9.0:1
PREP AREA 08	+	13.3 fc	19.3 fc	5.6 fc	3.4:1	2.4:1
RESTROOM 05	+	10.4 fc	14.9 fc	5.3 fc	2.8:1	2.0:1
VESTIBULE 03	+	9.4 fc	13.4 fc	4.9 fc	2.7:1	1.9:1
ENTRY HALL 01	+	8.2 fc	12.8 fc	2.6 fc	4.9:1	3.2:1

LUMINAIRE SCHEDULE					
GENERAL NOTES:					
1. CONFIRM ALL FINISHES AND CEILING MOUNTING TYPE WITH ARCHITECT PRIOR TO RELEASING ORDER.					
2. PROVIDE UNIFORM DIMMING.					
3. SPARE DIFFUSERS AND LENSES: FURNISH AT LEAST 1 OF EACH TYPE.					
4. SPARE DRIVER: FURNISH AT LEAST 1 OF EACH TYPE.					
TYPE	DESCRIPTION	LAMP	VOLTAGE	MANUFACTURER	REMARKS
F1	6" LED ROUND RECESSED DOWNLIGHT WITH WIDE BEAM, COMFORT CLEAR DIFFUSE REFLECTOR AND WHITE FLANGE.	1500 LUMEN LED 80CRI 3500K 15.4 WATTS	120VOLT	LIGHTOLIER: MODULYTE M6R PRESCOLITE: LITEFRAME 2.0 OPUS: RONDO R66	PROVIDE 0-10V DIMMING DRIVER WITH DIMMING DOWN TO 10%.
F2	6" LED ROUND RECESSED WET LOCATION DOWNLIGHT WITH WIDE BEAM, COMFORT CLEAR DIFFUSE REFLECTOR AND WHITE FLANGE.	1500 LUMEN LED 80CRI 3500K 15.4 WATTS	120VOLT	LIGHTOLIER: MODULYTE M6R PRESCOLITE: LITEFRAME 2.0 OPUS: RONDO R66	PROVIDE 0-10V DIMMING DRIVER WITH DIMMING DOWN TO 10%.
F3	20" TRIMLESS ROUND LED SEMI-FLUSHED WITH 2" STEM MOUNTED WITH FABRIC SHADE AND POLYCARBONATE DIFFUSER.	2873 LUMENS LED 80CRI 2700K 37 WATTS	120VOLT	WAC LIGHTING: MANHATTAN SEMI-FLUSH SERIES BROWNLEE LIGHTING: BOOST 2600 SERIES	PROVIDE 0-10V DIMMING DRIVER WITH DIMMING DOWN TO 10%.
F4	LED SQUARE CANOPY LIGHTING FIXTURE.	2340 LUMENS LED 80CRI 3500K 20 WATTS	120VOLT	ALED LED LIGHTING: LOP SERIES BEACON: LUMASQUARE ZUMTOBEL: PERLUCE	
F5	13" ROUND LED SURFACE MOUNTED LIGHTING FIXTURE AND WHITE FINISH.	1600 LUMEN LED 80CRI 2700K 20 WATTS	120VOLT	WAC LIGHTING: BLO SERIES VISTOS: SABA PL 30 BROWNLEE LIGHTING: SPIN 2601 SERIES	PROVIDE 0-10V DIMMING DRIVER WITH DIMMING DOWN TO 10%.
F6	8" RECESSED WALL PERIMETER LED LIGHTING FIXTURE WITH 6" REGRESSED LENS, AMBIENT DISTRIBUTION, STANDARD HOUSING, AND WHITE FINISH.	1500LM/4FT LED 80CRI 3500K 13.7W/4FT	120VOLT	LEDALITE: TRUGROOVE PERIMETER PRUDENTIAL LTG: BIONICPRO4 LUMENWERX: VIA 3 PERIMETER	PROVIDE 0-10V DIMMING DRIVER WITH DIMMING DOWN TO 10%.
F7	3' EXTERIOR LED BOLLARD LIGHTING FIXTURE.	172 LUMENS LED 80CRI 3500K 12 WATTS	120VOLT	DESIGNPLAN: K1AK SERIES	
EXIT	RECESSED MOUNTED EDGE-LIT EXIT SIGN WITH BRUSHED ALUMINUM HOUSING, GREEN ON MIRROR LETTERS AND WIRED ON 2 SEPARATE AC CIRCUITS. COORDINATE WITH PLANS FOR NUMBER OF FACES AND CHEVRONS REQUIRED.	2.2 WATTS	120	LITHONIA: EDGR SERIES CHLORIDE BY SIGNIFY: 45V SERIES	

[illegible]CLAREMONT PD  
ADDITION

CITY OF CLAREMONT

570 W BONITA AVE,  
CLAREMONT, CA 91711

## EGRESS CALCULATION AND FIXTURE SCHEDULE

Project number	17668
Date	11/22/24
Drawn by	DS

E7.00

Scale	NONE
-------	------