



Instructions for loading data into the Radius software program from your email.

First make sure that the Radius software program is closed.
Now Click on the link in your email.

Your email will look like this when it arrives. Click on link as shown...

A new FileShare™ has been created for you. Please use this link to download the shared file(s). If clicking the link does not work, manually copy the link and paste it in your web browser.

FileShare™ link: [Click here to access FileShare™](#)

FileShare™ Details have been given below:

FileShare™ Sent By:	
Link Expiration:	Jan. 09, 2016 04:27:30 PM

If you have questions about the files, please contact the sender:

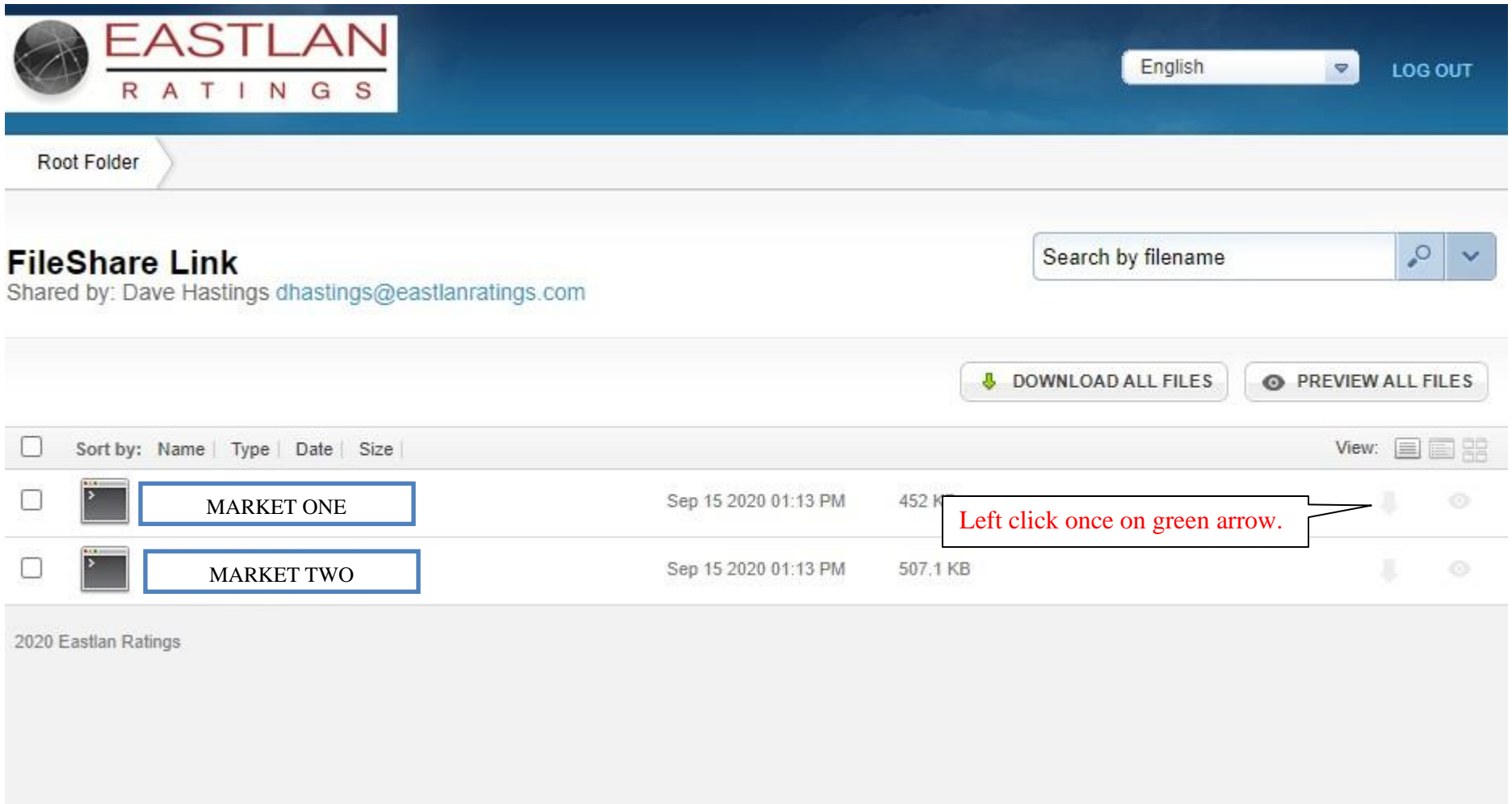
Thank you for using our service.

Eastlan Ratings







You can also copy this link to your web browser:
<https://private.filesanywhere.com/M66W/FS/v.aspx?v=8a6d68bd60a6a5bb6f9b>

This email was sent to [dhastings@eastlanratings.com]. To stop emails from this user, you may [unsubscribe](#) or write to: FilesAnywhere Postmaster, 3301 Airport Freeway, Suite 200, Bedford, TX 76021. [Eastlan Ratings](#) [Privacy Policy](#)

Click on one of the files or the green arrow as shown to begin the download of that file. Download one file, go through installing then return to do the next one. Repeat the process of installing for each individual file.

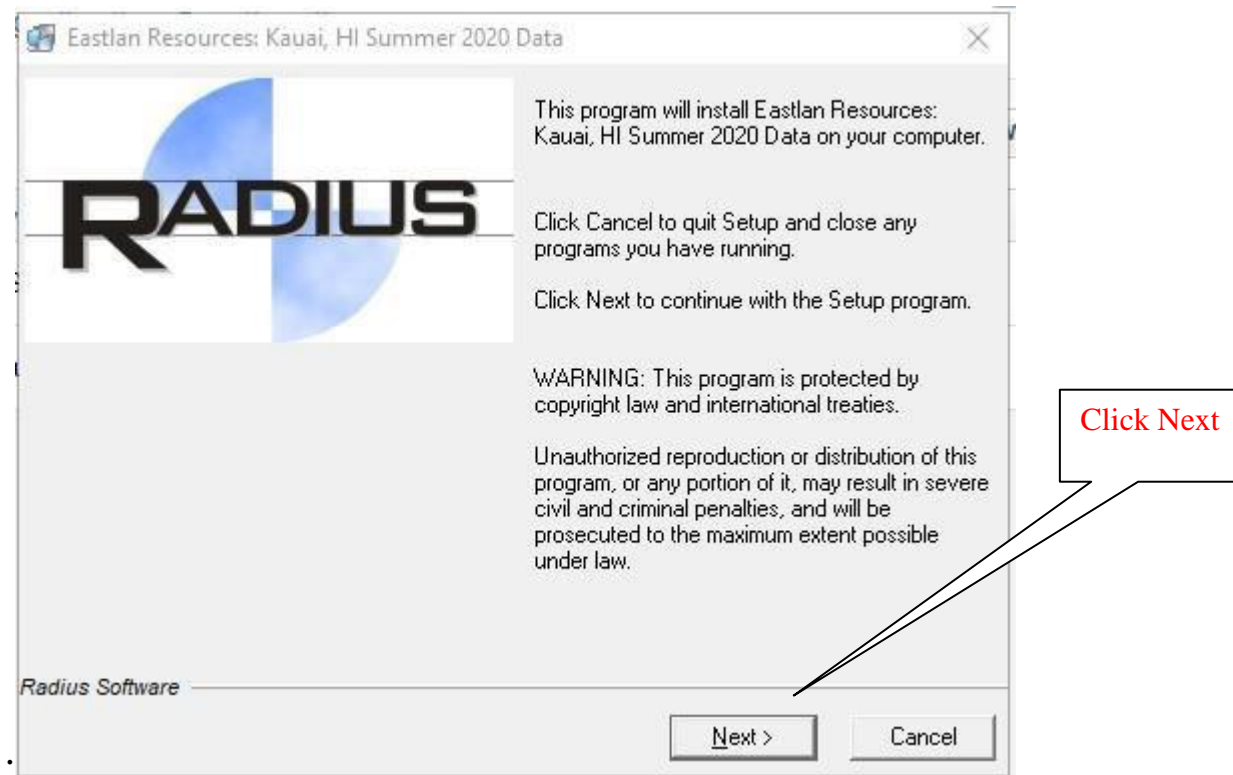


The screenshot shows the Eastlan Ratings FileShare interface. At the top, there is a header with the Eastlan Ratings logo, a language dropdown set to 'English', and a 'LOG OUT' button. Below the header, a 'Root Folder' breadcrumb is visible. The main content area features a 'FileShare Link' section with the text 'Shared by: Dave Hastings dhastings@eastlanratings.com' and a search bar labeled 'Search by filename'. Below this, there are two buttons: 'DOWNLOAD ALL FILES' (with a green download arrow icon) and 'PREVIEW ALL FILES' (with an eye icon). A table lists the files available for download:

<input type="checkbox"/>	Sort by: Name Type Date Size				View: [List] [Grid]
<input type="checkbox"/>	 MARKET ONE	Sep 15 2020 01:13 PM	452 M	 	
<input type="checkbox"/>	 MARKET TWO	Sep 15 2020 01:13 PM	507.1 KB	 	

A red callout box with the text 'Left click once on green arrow.' points to the green download arrow icon in the first row of the file list. Below the file list, there is a section titled '2020 Eastlan Ratings'.

Select the file you downloaded (file may be in the bottom left of your screen, upper right or in your Download Folder. (Note: if you get a popup screen that says ‘Don’t Run’ but there is no ‘Run Anyway’ button, look for a button or link that says something like “More info”. If you click that, the Run Anyway button should appear. On browsers you may see a ‘Keep’ link or button instead. Click that then click “Keep Anyway”) Once you get to the following screen click NEXT...





1) Click I Agree, then 2) click Next.



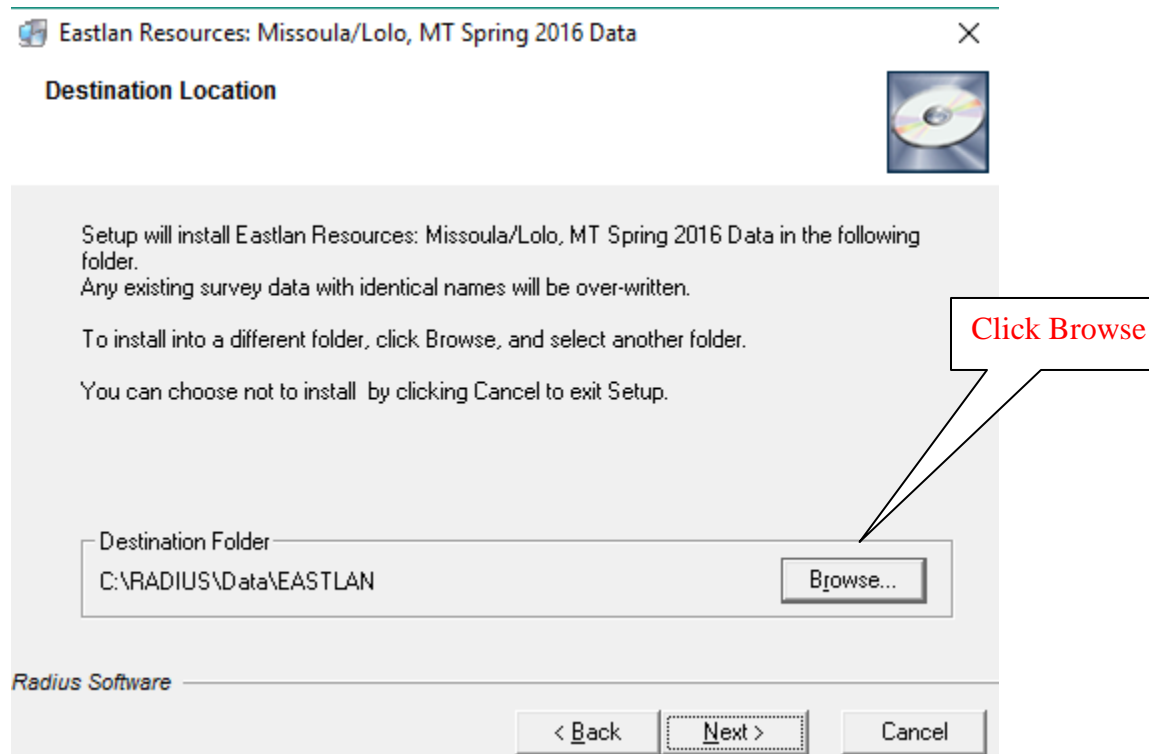
1) Click I Agree

2) Click Next

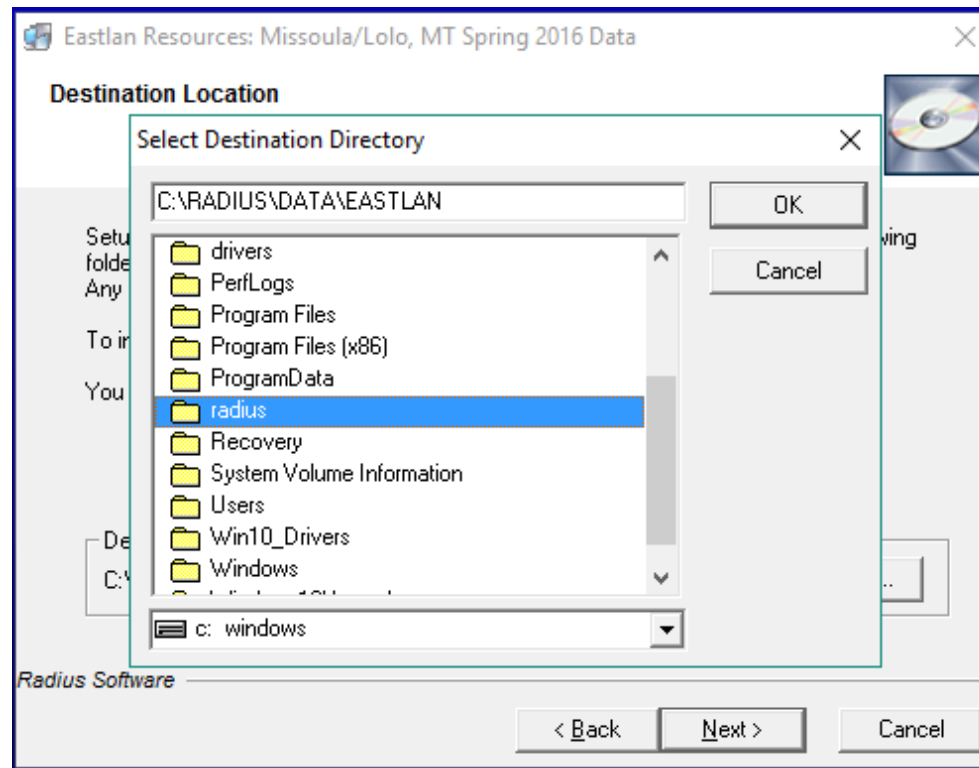


DO NOT CLICK NEXT ON THIS NEXT SCREEN YET. If you did, hit the back button so you are on the screen below.

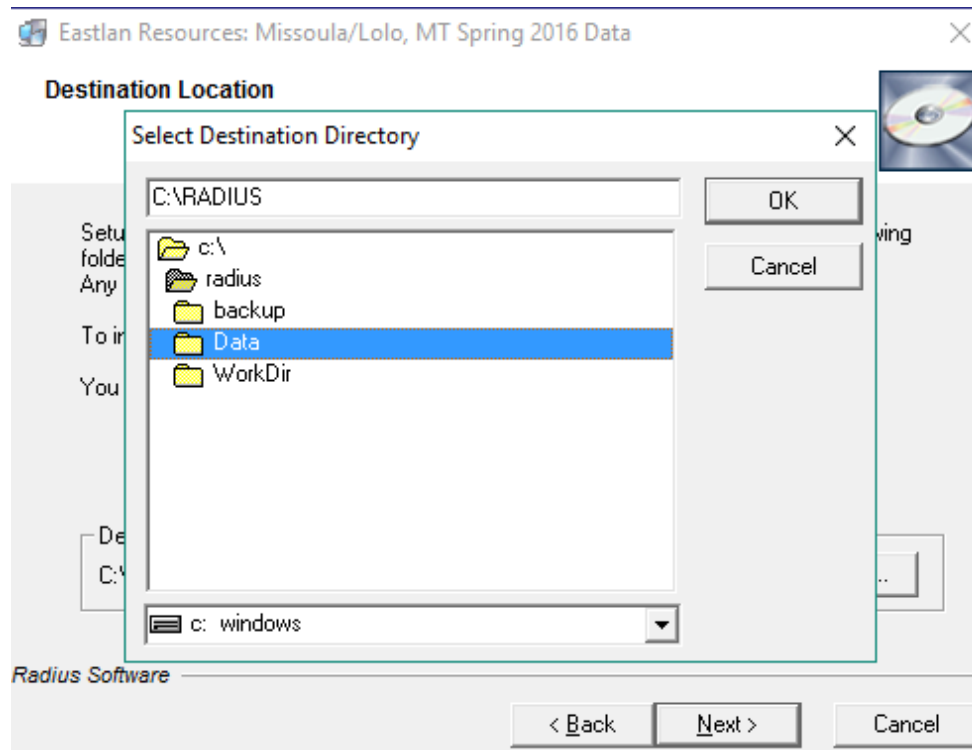
The next window, Destination Location *is the most important part* of the data installation. Click on the Browse button.



This will open the Select Destination Directory window. **Scroll** to the Radius folder.
Double click the Radius folder

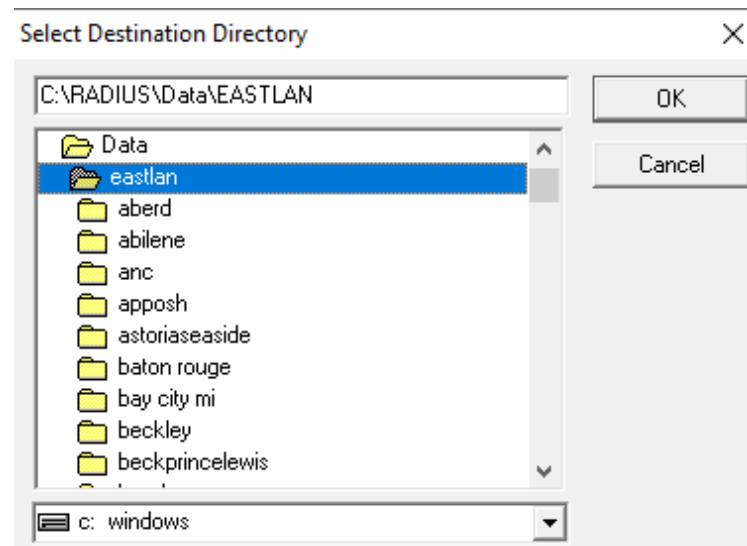


Double click the Data folder.



Now **double click** the Eastlan folder.

That will bring up the names of the folders for each market survey you have under the Eastlan Folder. See example below. In this example under Eastlan are the Market Survey Folders for Aberd, Abilene, etc. What should show on your screen will be the names of your Market Survey Folders.



(Critical: Make sure you are loading the file into the correct folder. Sometimes Market Survey Files (files you are loading in) will have similar names. Example: You might have two files to download one is “Fredericksburg VA” and the other is “Fredericksburg Metro”. Be sure you are loading the right file into the correct corresponding folder.

If you do not, the data will be wrong or not work. To fix it you will need to call us.

If you are unsure, stop and please call us for assistance and we will help load it in.

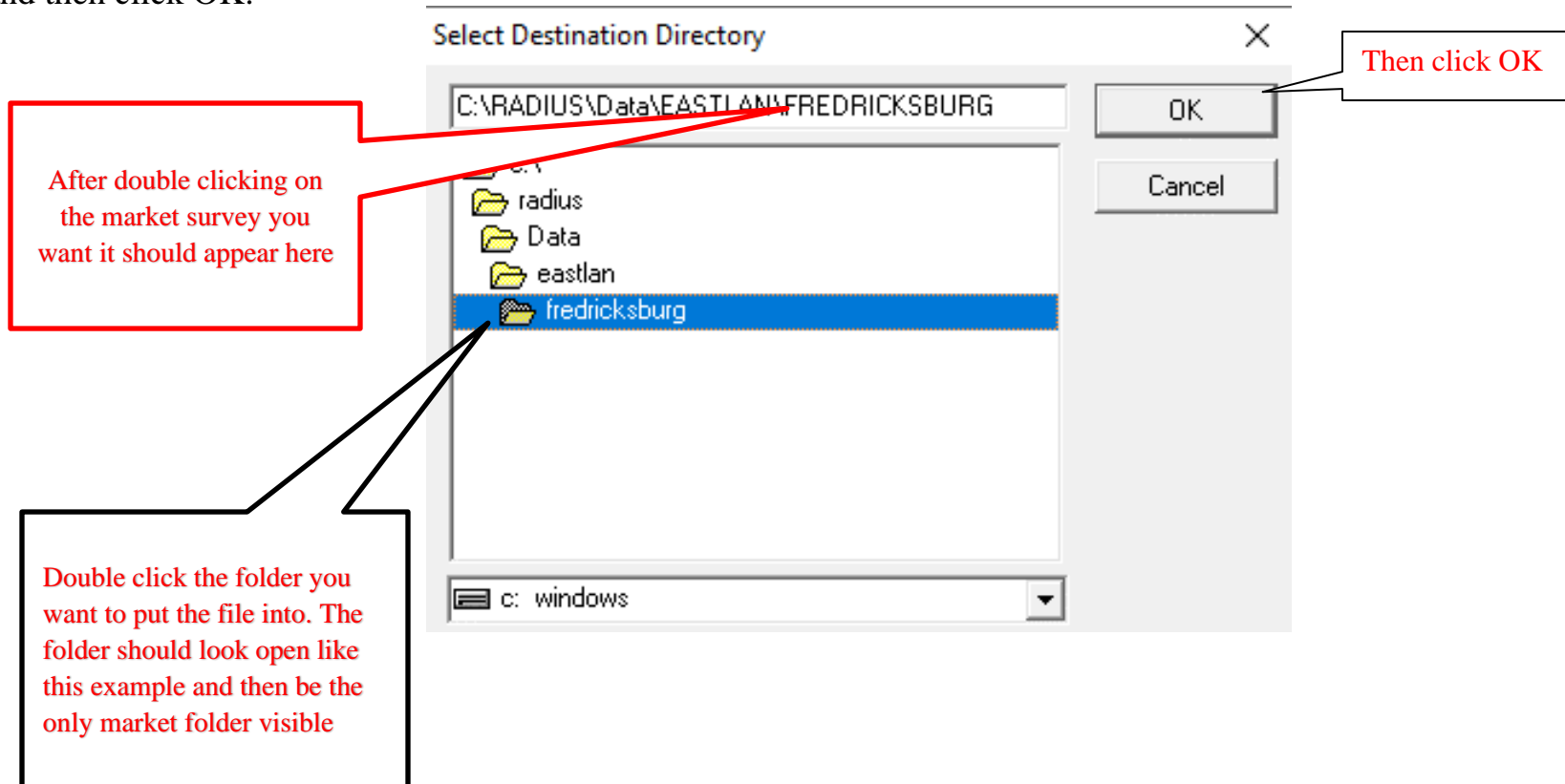
Double click to open the correct Market Survey Folder that corresponds to the Market Survey File you are loading in so that you can

place the same survey file in the same corresponding folder.

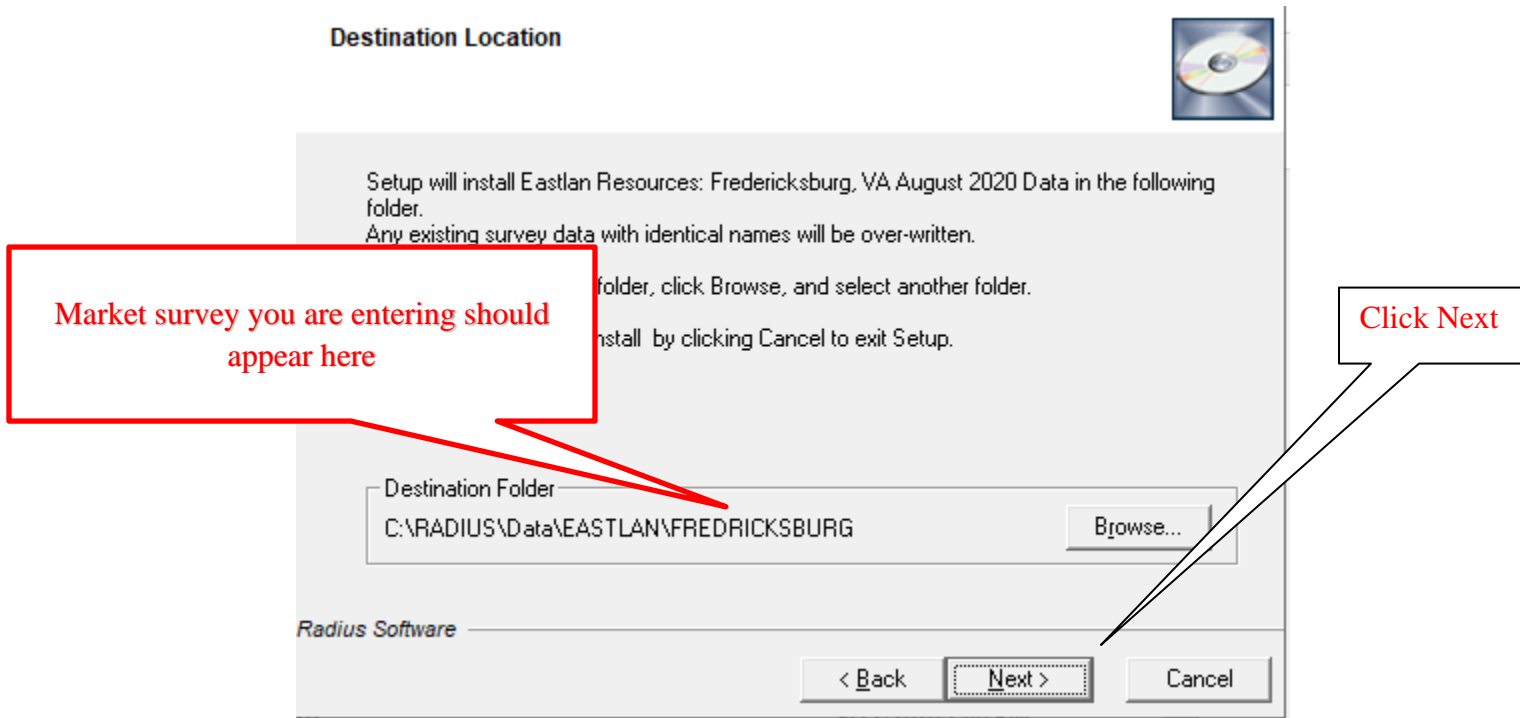
NOTE: You will know you have double clicked the folder correctly as it will then be the only market folder visible.

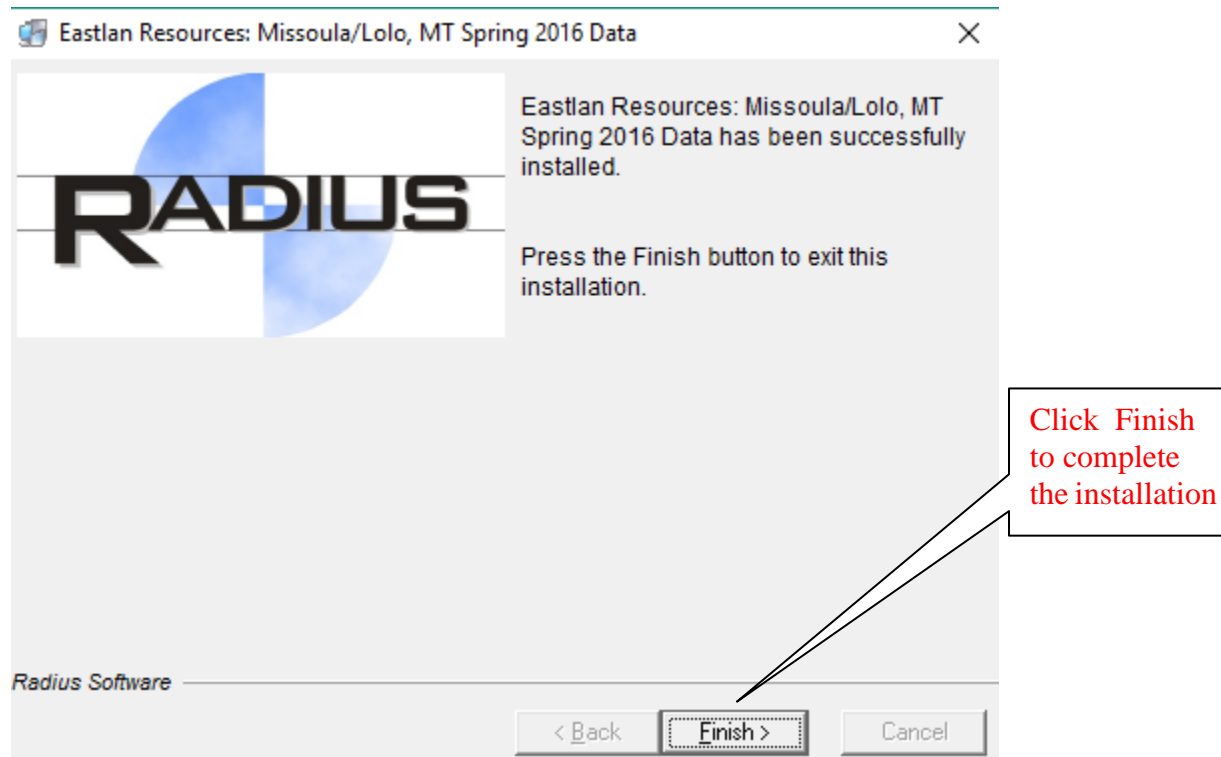


EXAMPLE: if the Survey you are adding is the Fredericksburg VA (and not “Fredericksburg Metro” survey) then you want to select the “Fredericksburg” and not the “Fredericksburg Metro” folder. **Double click** the folder you want to open. Verify it is correct and then click OK.



Confirm the correct market survey is now showing. If so, then click Next and Finish. If not, then click browse and go through the process of picking the folder again.





After you Click Finish, your new Eastlan Ratings data is now ready to use in Radius.

If you have another File (Market Survey) to download just repeat the process exactly again, being sure the correct file is loaded into the correct folder.

Need help? support@eastlanratings.com