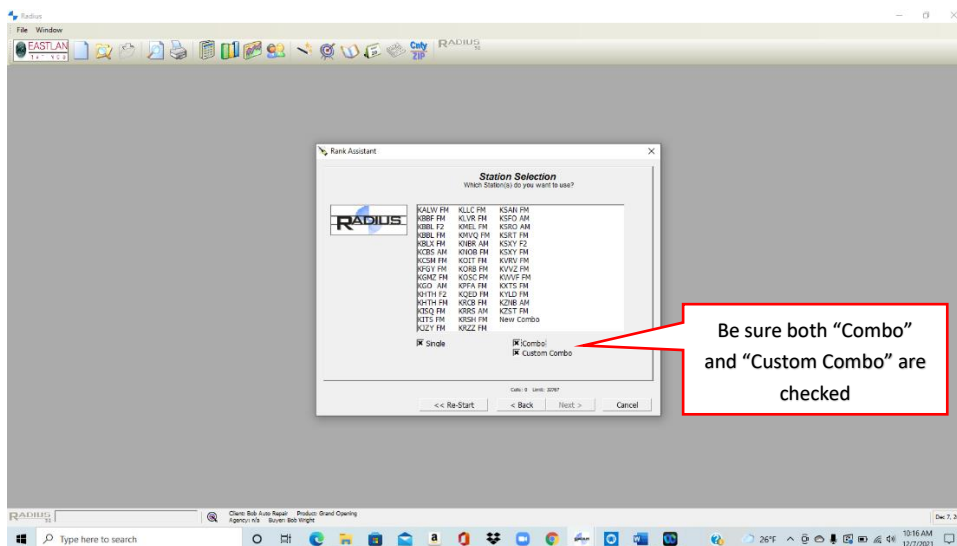


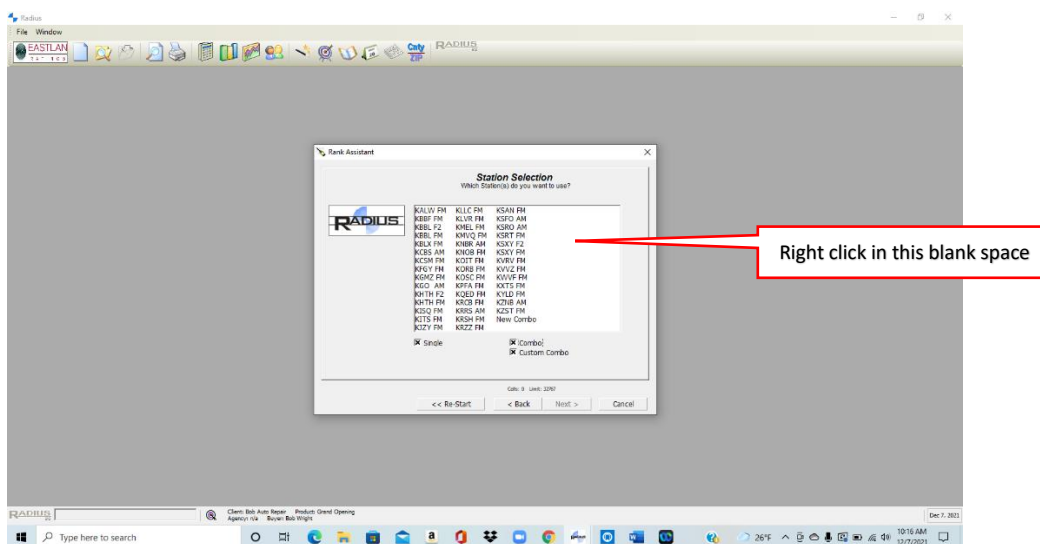


CREATING CUSTOM COMBOS

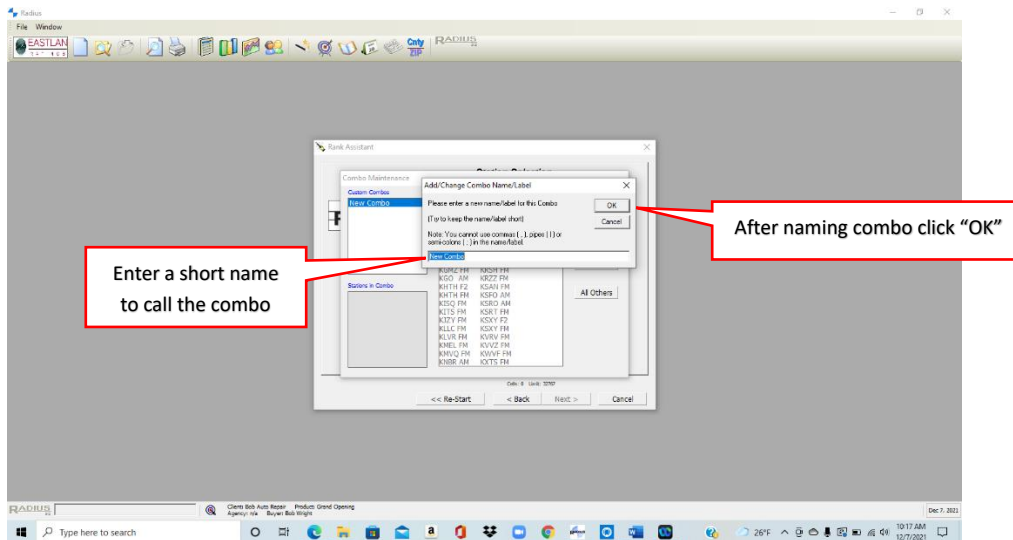
Start with Radius Wizard; when you get to the window for Station Selection, you will need to have the Single, Combo, and Custom Combo boxes checked in order to see all stations included in the market survey.



Right click in the blank space of the Station Selection box...



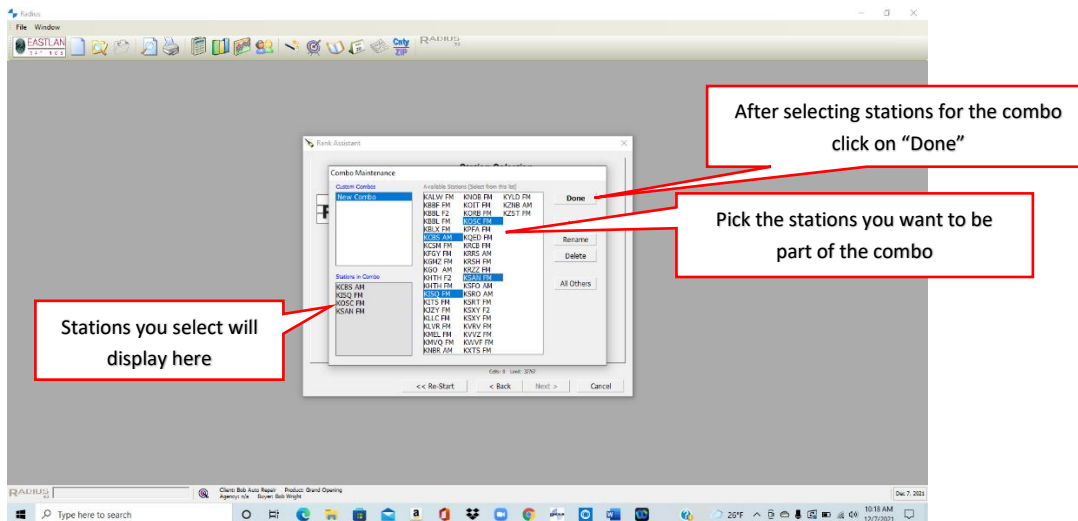
Type in a name for the Custom Combo, a short title will help. Then click "OK"



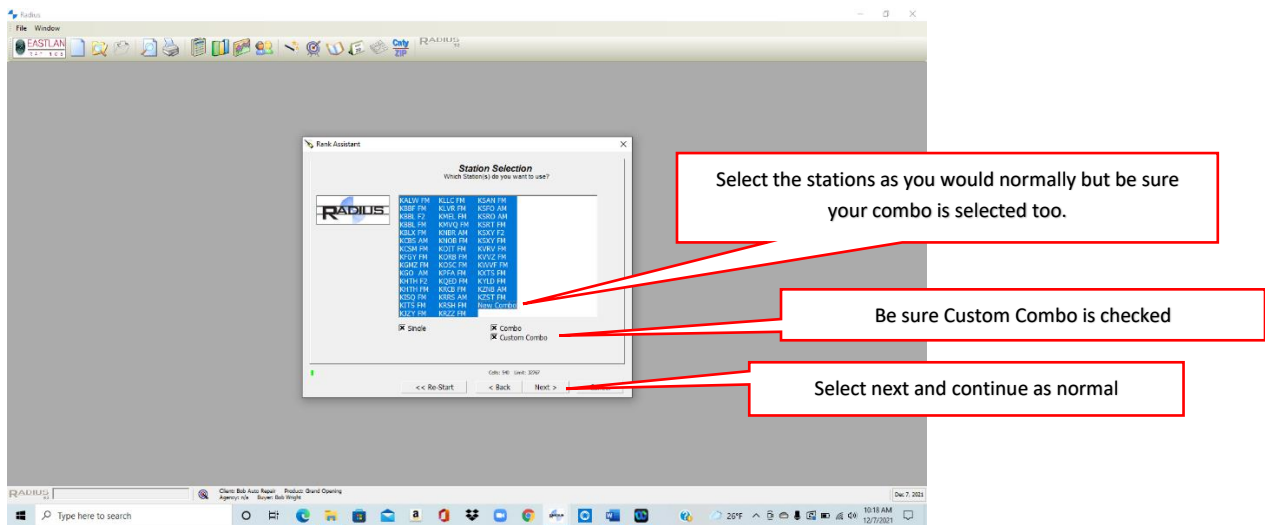
Now your *Custom Combo* is ready to build.

Select/click on the stations you want to be part of the combo.

You will see the stations you selected appear in the "Stations in Combo" window. Once you have created a *Custom Combo*, it will be available at all times throughout all modules of the system. Click "DONE" when finished creating the combo. Pro tip: if you want to delete a combo you created just select the combo you want to delete in the "Custom Combo" panel in Combo Maintenance window and then click on Delete.



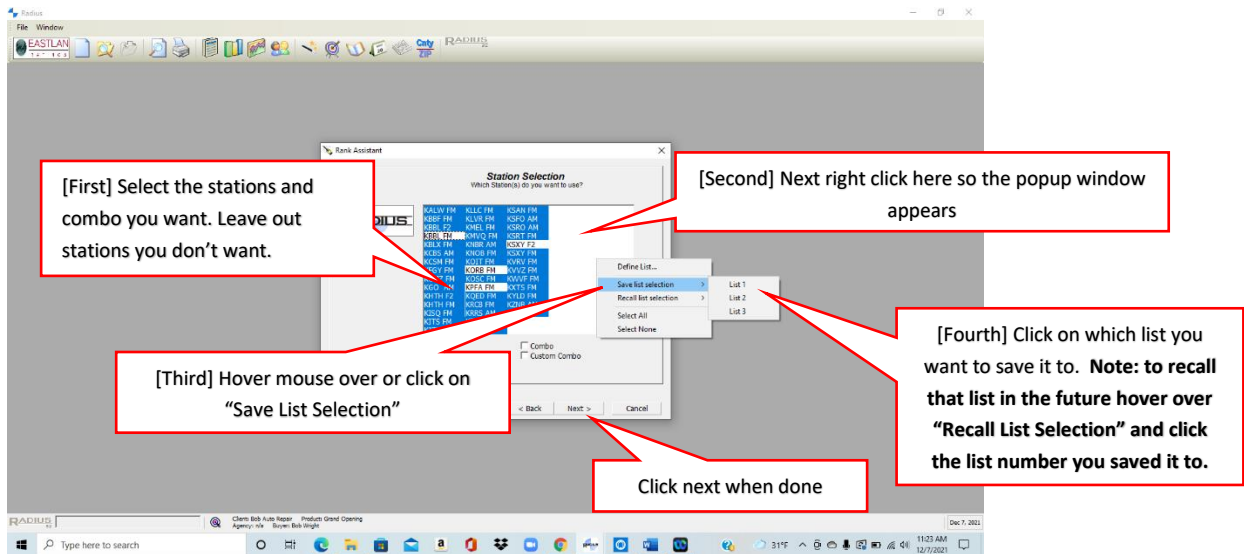
You will be back at the **Station Selection** window once again. Select all the stations that you wish to look at and include your new combo, click **Next** to proceed. **PRO TIP:** when using any module of Radius, if you do not see the Custom Combo you created, be sure the Custom Combo box is checked at the bottom of the Station Selection screen.



PRO TIP: If you do not want to include your new combo, either unselect it or uncheck the Combo and Custom Combo boxes at the bottom of the Station Selection screen.

If you don't want to include the individual stations that are now part of your combo (so they are not individually listed as well on your reports) unclick those stations before hitting next. Or you can create a custom "List Selection" so you do not have to do that every time you run a report (see below on how to do that). **PRO TIP:** You can select "All Stations" by right clicking in the station selection box and then on the popup window choose "Select All". Then hold down the Control Key and click on the stations or combo you do not want to include.

Create a custom "List Selection": Start by selecting all the stations you want on the custom list, including your combo (do not select the individual stations that are part of your combo). Right click in the station selection box and then hover your mouse or click on "Save List Selection". Then a popup window will appear where you can save it to one of three custom lists by clicking on that list number. Anytime you want to use that custom list, just right click on the Station Selection box, hover the mouse over or click on "Recall List Selection" and click on the saved list number. Then click next and proceed as normal (See Screen on next page).....



Email support@eastlanratings.com or call 800-487-5010 if you need further help or training. Thank you for using Eastlan Ratings and Radius.