



Easter 2019

Greetings from Bishop Dan Selbo

North American Lutheran Church

Pastor Baer and Members of Immanuel Lutheran Church:

Greetings in the name of our Triune God – Father, Son and Holy Spirit!

It is with tremendous joy that I write to congratulate you on the occasion of your congregation's 100th Anniversary! To know that your ministry has been blessed by God and has served as a blessing to your community for so many years is truly a reason to celebrate.

God works through His Church to carry out His will and His work in the world. Over the past century, Immanuel Lutheran Church has been used by Him, through the power of the Holy Spirit and through the preaching and teaching of the Word and the proclamation of the Gospel, to call and lead people to a saving and a life-giving faith in His Son, Jesus Christ.



Bishop Dan Selbo

The promise of God, spoken through the prophet Isaiah, is certain. *“As the rain and snow come down from heaven, and do not return to it without watering the earth and making it bud and flourish ... so is my word that goes out from my mouth; it will not return to me empty but will accomplish what I desire and achieve the purpose for which I sent it.” (Isaiah 55:10-11)* You can be certain that your ministry has borne much fruit, and that your work and witness, over the past 100 years, have been used by God to change and transform countless lives for the Kingdom.

As one of the first congregations to join the North American Lutheran Church at the Constituting Convocation in Columbus, Ohio, on August 27, 2010, you are among the original charter members, and were instrumental in the formation of our church body. There are now more than 450 congregations who claim the NALC as their denominational home. Thank you for your faith, your witness, and your courage in being on the front end of our formation and our shared life.

Once again, congratulations on your 100th Anniversary! May God continue to bless you and your ministry, as you place your faith in Jesus and as you live out the life and the calling we have in Him.

In Christ Jesus,

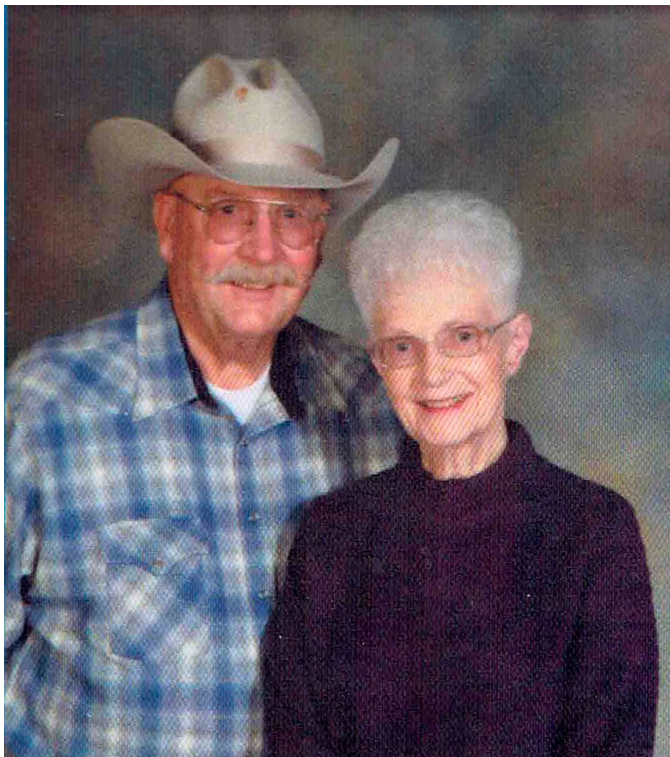
Bishop Dan Selbo
North American Lutheran Church

Reflections from Orin Bader

My late wife, Marilyn, and I were longtime members of the ELCA. After its historic action in 2009, we felt as if the church had left us. We were unable to justify being a part of something that seemed so wrong to us.

A friend suggested that we might want to consider Immanuel Lutheran, as it was dealing with the same struggle. So we showed up on Sunday morning and immediately felt welcome and included.

Within a short time Immanuel became a part of the NALC, thus remaining true to the tenets that we believed in so strongly. We received “shelter from the storm” at Immanuel, and I shall be forever grateful.



Orin and Marilyn Bader

Reflections from Ralph and Renae Besler

We moved to Whitewood after a forest fire in Colorado because Ralph had many relatives in Perkins County, South Dakota. We visited a couple of churches in Sturgis and Spearfish, but they didn't feel right. We were driving around Whitewood and a woman was coming out of Immanuel, and we asked her if she liked the church. She said she really did. So the next Sunday, we attended the service. We immediately felt at home.



Ralph and Renae Besler

In all our Air Force travels, we have never found the warm welcome we received. In our 17 years, the friends, comradery and acceptance filled our lonesome hearts and the people became our family. We especially enjoy the sermons and the insight Pastor Baer delivers. The Ladies Club is very active and supports a number of needy causes, besides making prayer shawls, lap robes, and blankets.

Like many churches, we need a younger congregation to keep the work continuing. Our choir and music is uplifting and Renae enjoys participating.

Ralph, Renae and Derek Besler

Reflections from Chris and Bill Burleson

When my sister, Deb Christensen, was diagnosed with breast cancer, later with liver cancer, I started to come to Immanuel to be with her. Soon Bill joined us. At that time, we were members of Shepherd of the Hills in Lead. Soon Bill and I felt so at home at Immanuel.

After Deb's death we still were drawn to Immanuel. There was something about this church — the people, the family-like feeling we get each time we attend. This was where we wanted to become members, so we transferred our membership from Lead to Whitewood.



Chris and Bill Burleson

We love our church. We will never forget the love and care Pastor David gave sister Deb. I think of her every time I look at the stained glass angel window. Those things about Immanuel church are deep in our hearts forever.

Within a short time Immanuel became a part of the NALC, thus remaining true to the tenets that we believed in so strongly. We received “shelter from the storm” at Immanuel, and I shall be forever grateful.



Stained glass window given in memory of Debra Christensen (1956-2007).

Reflections from Bruce Flagstad

When the treasurer's job at Immanuel Lutheran became open at the end of 1994, my wife told me that I should take the job. She said that I didn't do anything for the church — I couldn't sing in the choir and then reminded me that when I went to help when we were working on the addition to the church, I was there about 15 minutes when someone politely suggested that maybe I should go rake the lawn. I agreed to take over as treasurer on January 1, 1995, for "a couple of years," retiring on January 1, 2020.

I was blessed during that time to be a part of the growth of Immanuel. When I took over the job, we were sharing a pastor with the Lead congregation and had a budget of around \$35,000. When I retired, we were independent and had a budget of over \$200,000. We had called Pastor Baer shortly before I started. We also purchased a house in Whitewood to be our parsonage. It was a stressful financial time because we had to pay a full-time pastor's salary plus benefits and assume a house payment. It was a struggle but our members stepped up.



Kathie and Bruce Flagstad, Deric and Kirsten

Pastor Baer mentioned several times at council meetings that we had talked about independence when we were interviewing him. Eventually he scolded us for not moving on. Most of us were afraid of not being able to financially support independence. But, as we have come to know, Pastor always gets his way.

The process of independence was long and sometimes complicated. We were finally able to reach an agreement on distribution of finances with the Lead church, how to handle Pastor Miller and Baer (who would be at which church) and other things with the separation of the two congregations.

I can't leave this topic without telling you about Pastor Hill. As you know Pastor Hill was very bitter about the forced merger of the two churches in Lead. I am sure this is what caused him to abruptly "retire." But Pastor Hill checked a couple of times about our independence. The last time I talked to him, a couple of years after our independence, I was driving down the interstate and he called to ask how we were doing and did we come out OK with Lead. I told him that we got along pretty well for a "bunch of Christians." He gave me one of his hearty laughs and that was it.

Later we were able to pay off the parsonage with the money we had received from the sale of Pastor Hill's original church in Lead and from a "scheme" Pastor Baer and I devised. The scheme involved selling interest notes to our members to pay off a \$30,000 bank loan. The members responded big time. With the interest saved and the donations of some of the notes, we were able to pay off the 10-year loan in less than three years.

It was financially difficult to start with, but eventually the increase in members and giving eased the pressure. The move to NALC was a member and financial boon. It was much easier being treasurer. We were able to pay off the 30-year assessment for the curb and gutter in front of our property by the city of Whitewood, saving thousands of dollars.

At the present time we have no long-term debt and have money in savings and in investments.



Bruce and Kathie Flagstad, Deric and Kirsten in 1988

Reflections from Kathy Westberg Hinckley

I remember when the current church building was built in 1960. As a 12-year-old, I was thrilled to participate in a group activity staining the beams. I recall the beams were laid outdoors, probably with some support underneath them. I was given a brush and stain and joined everyone in the task. I believe there is a photo of that day, but I cannot locate it. Even today, when I return to Whitewood and attend church services, I gaze at those beams and remember that special day.

We moved to Whitewood when I was six years old and started attending church in the original building near the schoolhouse. It must have been that year, or maybe the next, when I was in Sunday School, that the teacher said there was not a Santa Claus! Somehow that fit into the Bible story she was sharing. I was devastated. My classmates (most likely Carol Lee, Cliff Jensen, and maybe David Wanhanen and Michael Jefferies) all nodded in agreement. I did



Kathy Westberg Hinckley when she served as Immanuel's organist 1962-1966. She is the daughter of Glen and Millie Westberg.

not know that Santa Claus was not real. My mother had a very upset little girl on her hands and was forced into explaining it to me. I now wonder if my mother said anything to that teacher, but I'll never know.

I loved going to church in that old building. Kathy Jensen was the pianist and inspired me to beg for music lessons. Eventually my parents did purchase an organ, and I was the church organist in my high school years.

When I was in confirmation (now in the new church), we were reading verses from Genesis. At one point I asked Pastor Ziebarth what "circumcised" meant. His answer: "Ask your mother."

Favorite memories growing up in the church include art projects during the summer Bible Schools and singing hymns, especially when Avril Yuill led us. And, of course, always pounding on the piano in the reception area as I slowly learned how to play.



Kathy Westberg Hinckley

Reflections from Jon and Shelley Iverson

Our journey to Immanuel Lutheran Church began in 2012 when Jon accepted a job in the Thrivent office in Spearfish. We were moving from a loving Lutheran church in the Omaha area. All three of our children were confirmed in that Lutheran church. Our church in Omaha went through the process of transitioning from the ELCA to LCMC. We had seen the uncertainty and turmoil a transition can cause in a church family. As a result of seeing this upheaval, we began looking for a Scripture-based Lutheran church in the Spearfish area even before we moved from Omaha. The closest one we found was Immanuel Lutheran in Whitewood. Our first Sunday at Immanuel was the Sunday we knew we'd found our church home. Immanuel is a very welcoming, Bible-based church and we fell in love with it.

In 2013, Shelley's mother came to stay with us after being diagnosed with terminal cancer. Pastor Baer came to our Spearfish home with wisdom and love. He didn't know my mother, who was a lifelong Lutheran, but gave her Communion, prayed with her and for all of us, helped us get hospice set up for her when the time came, and called us often to make sure things were OK. Our new friends at Immanuel sent us cards, prayed for us, offered help and food and were extremely caring when we needed it most. We were deeply moved and comforted by the love we felt and, at that time, we had been going to Immanuel for less than a year. We knew, without question, we were at home!



Shelley and Jon Iverson, Grace, Peter, Elijah and Katryna

Elijah and Grace, our twins, came to church during breaks from college. Grace sang in the choir after she graduated and before she found employment in Colorado. Our youngest son, Peter, went on two youth trips with the Immanuel Youth Group. The church provided part or all of the expenses, and Pastor Baer provided the learning experience throughout each trip. Having heard about other Lutheran youth conventions, our pastor decided not to go because of unbiblical messages being given. Instead of the convention, the kids did mission work, visited museums and churches along the way and always had a day at a Six Flags amusement park. Peter also did his Eagle Scout project with help from the church. Several members of the church showed up to help with his project.

We have been blessed to serve the church in many areas. Jon served on the Church Council. We've been involved with the choir since we started going to Immanuel. The studies and groups we're involved in are solidly based in our Christian faith.

Immanuel Lutheran Church has been a wonderful, warm church. We are blessed to be a part of the Lord's family in such an amazing church! We consider Immanuel Lutheran Church our family and what a wonderful family to belong to!

Reflections from Karl Jensen

Going to church and Sunday school followed by cookies and cake and Grandma Katrina's while Grandpa Pete carefully entered the collection numbers into the ledger.

Having to speak up so Grandpa Pete could hear us, completely unaware that English was a second language to him.

"Helping" build the new church by carrying nails; being absolutely amazed by the laminated beams. I thought the beams were as far as new technology could possibly go.

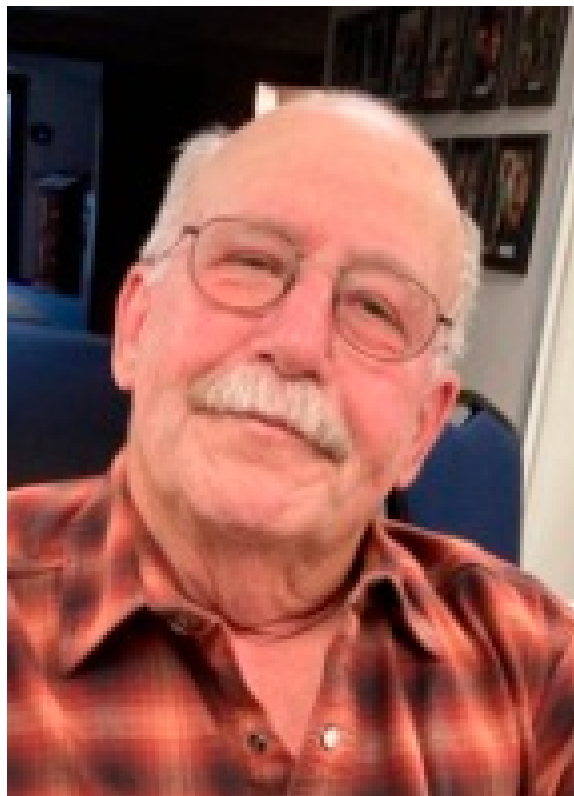
Lighting the candles on the altar with Jeff Westberg. We were probably the naughtiest acolytes in the history of the church.

Seeing our sister Kathy play the organ (with both hands and her feet) as well as sing along with the hymns, knowing that my musical ability would never reach that level, particularly with never practicing between lessons.

Remembering younger sister Mary saying, during calving season, that she certainly did not want to be "born again."

Having to get all the feeding done either before or after church because that time was sacred.

Realizing how many books there are in the Bible because we went through them one-by-one during confirmation.



Karl Jensen

Reflections from Dianne and Wayne Kunz

In October 2013, we moved to the community of Whitewood from Dickinson, North Dakota. We chose to retire here and build a home in Spruce Mountain Estates.

Once we were settled, we decided we needed to find a church to attend. We thought we would check out Immanuel Lutheran and 7½ years later we are so happy that we did!

The congregation was so welcoming and friendly plus we found a few common threads:

First, was the fact we had worked with Dr. Paul Swisher at the hospital in Dickinson, North Dakota, back in the 1990s.

Second, I discovered Tony Rath and the Rath family were friends and neighbors of Lonni Scheid, a gentleman I was acquainted with as a salesman who visited the laboratory where I was employed.

Thirdly, Pastor David and his wife, Joanne, had the same names as our son, David, and his wife, Joanne — so we knew that would help us remember their names!

We consider Immanuel Lutheran Church members a part of our “family” and look forward to attending Sunday worship services and being able to spend time with “family.”



Wayne and Diane Kunz

Reflections from Pastor Lloyd Miller

As I think on my eight year pastoral ministry at Immanuel, two impressions come to mind: warmth and cooperation. While working together many events have faded from my memory and other, specific memories stand out clearly but far too many to be included here.

My first impression was formed quickly by your warm welcome Jan and I felt upon our arrival at the church in Whitewood for the parish interview in late June 1993. Interviews regarding a parish “Pastoral Call” are usually nerve wracking, but this one was different. Of course, having former parishioners and relatives of former parishioners (the Raths, Pulschers and others), eased the interview process. The interview and visit went well. That warm, welcoming feeling continued throughout the time we were with you. I remember your stating your vision of the future while being part of the recently formed Prairie and Pines Parish you now hoped for a time when a second pastor could be called leading to Immanuel’s being an independent congregation. You set the tone for my pastoral agenda before me.



Pastor Lloyd and Jan Miller

The second impression was Immanuel’s cooperation in that process. As the Prairie and Pines Parish organization including Shepherd of the Hills, Lead, and Cave Hills, Buffalo, was new; you fully supported our working together in scheduling worship and other parish life events. There was excitement as we went through the calling process led by the Holy Spirit. Also, I remember the exciting anticipation in forming the parsonage for the new pastor. All was fully realized with the calling welcoming Pastor David Baer. The good cooperation continued for the rest of my ministry with you.

In conclusion I simply say THANK YOU for eight years when you were a part of Jan and my life and we were a part of yours.

Reflections from Duane and Harriet Quail

Our first memory of Immanuel Lutheran goes back to the mid 1960s when we were members of the Lutheran church in Spearfish and later in Sturgis. The pastors of those churches provided church services for the members living in Whitewood. One Sunday, as I remember, our pastor was out of town when several of us drove to Whitewood to lead the service with Dave Blegen, Sturgis, giving the sermon. Later, Pastor Jack Hill from Lead agreed to take his “day off” to provide pastoral duties for Immanuel. Little did we know at that time we would someday become members of Immanuel.

In the early 1970s we wanted our children, Dan and Mary, to attend confirmation class. Norma and Don Dubbe along with Kathie and Bruce Flagstad recommended we visit with Pastor Jack Hill about enrolling at Immanuel Lutheran. Their confirmation experience was a positive experience for us. Several times while waiting in my car to drive them back to Sturgis they would come out of the church excited and laughing.

We became members shortly thereafter taking part in the church worship and activities. During this time, membership was small, but active. I remember one annual meeting when it was recommended by the synod, we change our hymnals from the red to the new green hymnal. Funds were short, but the members overwhelming agreed with the recommendation and approved the purchase.



Duane and Harriet Quail

An Easter Sunday brunch had been sponsored by the current confirmation class for several years. Many members felt this breakfast was a conflict for many members as there were family gatherings that day. Why not have the brunch on Palm Sunday? The Palm Sunday brunch became a popular introduction to Easter week. Later McDonald’s of Sturgis furnished the pancake mix, juice, syrup, and paper products. Members provided table decorations and colored hard-boiled eggs.

During the time I served as the church treasurer, our envelopes had three pockets in which to place our offerings for the general fund, building fund and missions. I would take the Sunday offering home, divide the monies into the proper fund and next Sunday give Tony Westberg the building fund offering and David Wanhanen the mission fund offering.

There were times when our offering was just enough to cover expenses, but as church councils go, they continued looking for extra cash to spend. I felt it necessary to have a little

cushion “just in case” an emergency should arise. I opened a saving account in our bank, in time, depositing \$3,000. I did not record the savings account in the monthly treasurer’s report to the council but did include the saving account deposit on the annual meeting report. We were able to save \$3,000 for any emergency.

Building the addition to the worship area, fellowship hall and kitchen was a major challenge. Many members provided the labor under the leadership of our master carpenter, Joe Opine, who guided the entire project. He was supported by many willing church members. Giving was great and many would purchase sheet rock or wall boards for the project. Electrical expertise and installation was supervised by master electrician Clarence Rath.

During the time when Immanuel belonged to the Lutheran Church of America, we represented our church at a district meeting in Moorhead, Minnesota. Since Pastor Hill was serving two congregations (Lead and Whitewood) full time plus Cave Hills Lutheran, he never had the time or the opportunity to attend any of their meetings. We met many delegates and pastors who, jokingly, gave us a hard time as we were from the church with a “phantom pastor.” These people did not know how dedicated and busy he really was. An interesting sideline to this meeting was that the district president followed a strict time allotment for all speakers. I have never been to any district or national meeting where the presenters were given, say, 10 minutes, and went beyond that time he would gavel the speakers off even in mid-sentence. Very impressive.

Reflections from Doris Richter

As I think back, it doesn't seem possible that I've been a member for over 50 years. We bought our place in Whitewood Valley from Merle and Pauline Smith who were members of the church and spoke highly of what a welcoming, friendly church it was. I certainly found that to be true as I remember being welcomed by Mrs. Katrina Jensen, Mrs. Lela Rittberger and Mrs. Averil Yuill, the Sunday School Superintendent.

Music has always been a very important part of the services, and we've been blessed to have so much talent in the church. Kathy Jensen, daughter of Alvin and Georgia, was organist, and, when she was ready to leave for college, Kathy Westberg, daughter of Glen and Millie, took over. Soon after that the Sedig family purchased the nursing home and moved to Whitewood with their two boys. They were a very musical family, and Angie was soon helping playing the organ as well. Choirs were formed, and Norm and Tim sang with them. Oldest son Joe and Aunt Gweneth provided music when they were visiting. Sandy Sperele, a high school girl, was instrumental in getting a children's choir and junior choir started. When Angie was ready to retire, the musical Rath family moved to Whitewood, and Joanne began playing the organ and directing the choir. Her brother, Toby, has since taken over as choir director. We now also have the musical talent of Mimi Swisher as accompanist.



Doris Richter

As the years went by and the churches in Spearfish and Sturgis grew, it was becoming hard for them to meet the needs of our congregation. It was decided that Immanuel would become a mission church receiving help with finances from the synod. Pastor H. W. Reinke, a retired military chaplain, had been serving a church in Gordon, Nebraska, and was called to Whitewood. There were some personality clashes, and he accepted a call to Korea. It was a sad day for some of us because not only did we have to start over, we had to say goodbye to a friend.

Soon after that, the council began talking with the Presbyterian church about merging as they had a resident pastor. An agreement was worked out, and it was put before the congregation to vote on. It failed to pass, and several of those who worked very hard in support of it were disappointed. A couple of them left right away never to return, consequently this was a dark time for our congregation. I know there were questions about how we would survive, but, being built on faith, we felt that God would be with us in our time of need. We also had a treasurer who was not shy about asking for extra contributions when needed.

After the attempted merger, our council met with Pastor Gilbertson and the council from Grace Lutheran and were told they could no longer fulfill our needs. It was at this time the council decided to approach First Lutheran and Pastor Jack Hill in Lead to see if an agreement could be worked out with them. Our council met with Pastor Hill and the council and it was

decided to have him come to Whitewood one day a week and for a weekly Sunday service. This arrangement seemed to work quite well, so Immanuel asked to be released from the ALC synod and join the LCA. This seemed to work for some 20 years.

Having lived in the Cave Hills and meeting Pastor, Carol and Debbie in 1959 when they first came to serve that joint parish, I was happy. He spent a weekend a month staying in different members' homes and having three church services. He buried my parents, married my father and stepmother, as well as confirming my three children, and it was really hard for me to accept his resignation. I have heard different versions as to why he resigned with being that members of Immanuel were involved, which is the one I choose to believe.



Wendy and Doris Richter, Mike, Pamela, and Suzanne in 1975.

Once again, we were blessed with interim Pastor Kenneth Dugan, who really helped us to heal. He was a fantastic teacher, and I think most of us felt a sense of loss when he was called to Papua New Guinea.

Soon after the departure of Pastor Dugan, Pastor Bill Behrend was called to serve First Lutheran, Whitewood and Cave Hills. He was here for about three years until both churches in Lead dissolved and Pastor Lloyd Miller was called to serve Shepherd of the Hills, Whitewood and Cave Hills. At about this time Pastor David Baer was called as his assistant. A committee was formed at this time to begin looking for a parsonage in Whitewood for Pastor Baer. I did serve on this committee, and we looked at several possibilities. It was decided to purchase the present house close to the church.

At this time we voted once again to become independent. The time was set for the year 2000, and all of a sudden it was 2000. Through faithfulness and dedication, we have achieved that goal. We once again changed synods and adopted a new constitution. I, for one, am most thankful for Pastor David leading us in this direction and the members we have gained through this action.

At one time, we had several committees such as Evangelism Committee, Education Committee, Music and Worship Committee, and it seems like another which I thought was helpful in getting the congregation involved. We have so many talented people in our church that I wonder if that talent is being used. I look at the artwork in the form of wood carvings that were made by John Sogge, and I think of how dedicated Ann Sogge was in working on the Evangelism Committee. She kept the cradle roll up to date and sewed backpacks for distribution of school supplies. It seems to me that working in groups gets more people involved and maybe more of our new retirees are looking for some way to serve on these committees. New ideas are always good.

Reflections from Cyrus and Maxine Ripley

We began back in the early 2000s to search for a Jesus church guided by God the Father's Holy Spirit. In this worldly culture, the fight had begun to take down such Godly churches. Yes, Satan was and is working over time with many religious groups/churches functioning now without the Father, Son and Holy Spirit and have given voice to the "me movement, various cultures and the lost world." But we knew that Satan is not scheduled to win this spiritual battle and our hope remained in the Lord.

So we continued to see and understand that we could no longer be a part of a church that was falling into Satan's trap of lies. We knew the truth of His word was being preached by faithful, Spirit-led preachers some place, and the search led us to hearing, through a friend, about Immanuel Lutheran Church in little Whitewood, South Dakota. Yes, this little, rural community Lutheran church was opening its doors and hearts to all who were searching for the love of Jesus, the truth of God's word and the leading of the Holy Spirit.



Cyrus "Claire" and Maxine Ripley

In 2011, we heard the old Immanuel Lutheran Church of Whitewood was joining the newly formed North American Lutheran Church synod, and our search ended with a peace and joy in our hearts for those faithful who came before. We are thankful for these church pioneers and all who have followed in keeping the Gospel pure, for being a home church of love and life in Christ and looking to the future in the hope of eternal life for all who believe. We joined the believers of Immanuel (God with us) Lutheran Church with a measure of joy and peace.

We celebrate our congregation's 100th birthday this June 13, 2021, knowing the Lord is blessing this celebration and all He has planned for our future as believers in the truth of the Gospel.

Reflections from Ann Sogge

As I retrace it seems it was Spring of 1956 when we joined Immanuel. Laura was 1½ years old then. Mrs. Millis asked us the same week we decided to attend. (She believed she brought us in). Stanley joked that she raced the Presbyterian pastor to Vidock to invite people. She was Muriel Seifert's mother.

When we came in all the 15-20 people shook our hands in welcome. We joined a week or two later, transferring from Trinity Lutheran in Mobridge. The church was connected to Grace Lutheran, Sturgis, at that time. Church was at 1:30 p.m. every other Sunday. Kind of a hassle to remember which Sunday unless attending regularly.

Pastor Grote was our first pastor. Every service ending with the hymn "O Savior, Precious Savior." Pastor Grote, a big man strolled down the aisle singing very loud and very off key. "O Savior, Precious Savior" became my favorite hymn as it was presented with so much love.

It was fun visiting the Whitewood Senior Center as it is the old Immanuel Lutheran Church building. I could be wrong but I think the back yard could only be reached from inside the church. (I never saw anyone walk beside the church). It must have been right on the property line. It seems there was a fence on the street side and bushes.

It would have been entirely impossible to serve a big church dinner from the old church. Yes, we had running water — the kind you run and fetch from the back yard pump. When there were dishes to wash, water was heated on a kerosene stove. A summer salad luncheon was served at least for two years while we were there. I remember washing dishes. That was before paper plates were in common use.

One Sunday I'll always remember. It was mid-summer. Only eight people showed up for church. They were Glen and Millie Westberg, Pete and Katrine Jensen, Robert and Lucille Fagering, Georgia Jensen and I. Pastor Grote treated us as a whole congregation — Not a corner was cut!



Ann Sogge

The new church became possible when Millard Fillmore donated the lot it stands on. Lots of volunteer work went into its structure. It was decided that an upstairs addition would be more useful than a basement. The East and North side addition and the basement was built in the 1980s.

We (the women) had a date to clean the church, but acting like a “brat,” I came an hour or more earlier — did some dusting and mopping and disappeared. I guess it wasn’t a good idea as I think such work needs to be shared. I think that’s what the other women thought.

John and I knew Pastor Hill the best of all of the former pastors. John spoke from the pulpit several times on the rare occasions of his absence.



John and Ann Sogge and family

Reflections from Alona Westberg

Immanuel became my church home in 1964 when Tony and I were married by Pastor Ziebarth. I took adult confirmation from Pastor Reinke and was baptized by him. I was new to town and didn't know anyone. Tony's mom Millie invited me to come to "Ladies Aid" with her. The first people I got to know in town were the women of the church. Katrina Jensen was the unofficial greeter-hostess of the church. She knew everyone and their family. She always greeted everyone and asked about the family. She made great divinity. She always sat at the same spot at the table during "aid" meetings. When she died no one sat in her chair for the next year. She was really missed. Betty Kymala made the best brownies on her wood burning stove. Ilene Balo had one gear — full speed ahead. I considered Lela Rittberger my mentor.



Tony and Alona Westberg and family

We served the Fall Dinners from a really small kitchen. Coffee was made by boiling water in big pots on the stove. The water was then poured over the coffee grounds in the coffee pots. Percolators were a welcome and safer addition. The old tables that were made of plywood with lead pipe legs that we screwed on when we needed tables.

The ladies took turns cleaning the church and would have a yearly cleaning day when they did the deep cleaning. Back then there was a cabinet in a hall by the lady's bathroom. I was putting things away in that cabinet when I noticed a lot of boxes and envelopes shoved onto the top shelf. All the church records were in the boxes and envelopes in complete disarray. I started getting them organized. Back then the pastor's study was in the hallway area between the social room and dining room. I don't remember where I filed the church archives back then, but now we have two file cabinets in the storage room and three in the downstairs office. It was a real mess moving the files when the basement flooded. The sheet music was stacked on shelves in Pastor Hill's office. Now we have three file cabinets of music.

Many of the paraments we now use were made by women of the church. We ordered kits and put our personal touches on them. Many hours of hand work went into the blue Christmas set

that is decorated with counted cross-stitching. The purple Lenten paraments have couching that is hand done.

My involvement in Sunday School started around 1967 and I was involved in one way or another until 2006. There were a lot of Christmas programs over those years. I liked helping the kids put on plays. The kids enjoyed being in charge of lights and sound. We had lots of kids in Sunday School so these kinds of programs were possible. I have fond memories of one program with Etta Balo who was about four years old at the time. One of her final tasks was to blow a kiss to the audience at the end of the program. She said she couldn't do it. She wasn't allowed to. Seems she wasn't old enough. I am not sure when she did start dating.

The biggest VBS we ever had here at the church was 80 kids. That was before the addition so the social room was crowded. Back then it was divided by heavy curtains, so we had four classrooms. I'm not a popsicle-type craft person, so for VBS I tried to make simple but lasting things. Cindy (Bohm) Aker also had great ideas for crafts. I still see some of the VBS crafts in homes today.

Life for a pastor in a three-point parish can be hectic. One morning Pastor Hill was extra rushed. As I shook hands with him after the service I told him he had an extra button hole. Later that afternoon he called me. Not only was his cassock buttoned crooked, but his pant legs were still rolled up from when he polished his shoes that morning. Pastor Hill noted that you can skip to "Thank the Lord and sing his praise" from the liturgy. I think of that every time we sing it. Pastor Dugan introduced us to the hymn, "Lift High the Cross" which has become one of my favorite hymns.

We've come a long way in our 100 years. A new building was built in 1960. The overflow area and Sunday school room were added on in 1986 because we had out grown the building. Our church affiliation has changed through the years because of mergers and pastor supply. We've had some ups and downs, but Immanuel is still true to the original members beliefs. Built on Faith. I am glad we are a NALC congregation. I can't imagine going to any other church. This is family. This is home.

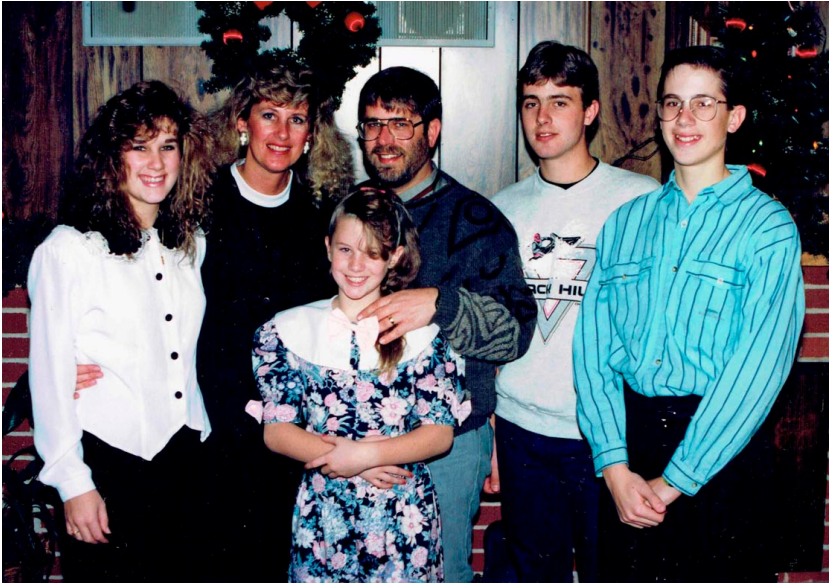


Alona and Tony Westberg

Reflections from Julie Westberg

I moved to Whitewood in 1965, at the age of 11, with my family of eight — my parents, John and Audrey Zwingelberg and five siblings. We started attending and became members of Immanuel Lutheran Church right away. Our family quickly grew with two more siblings.

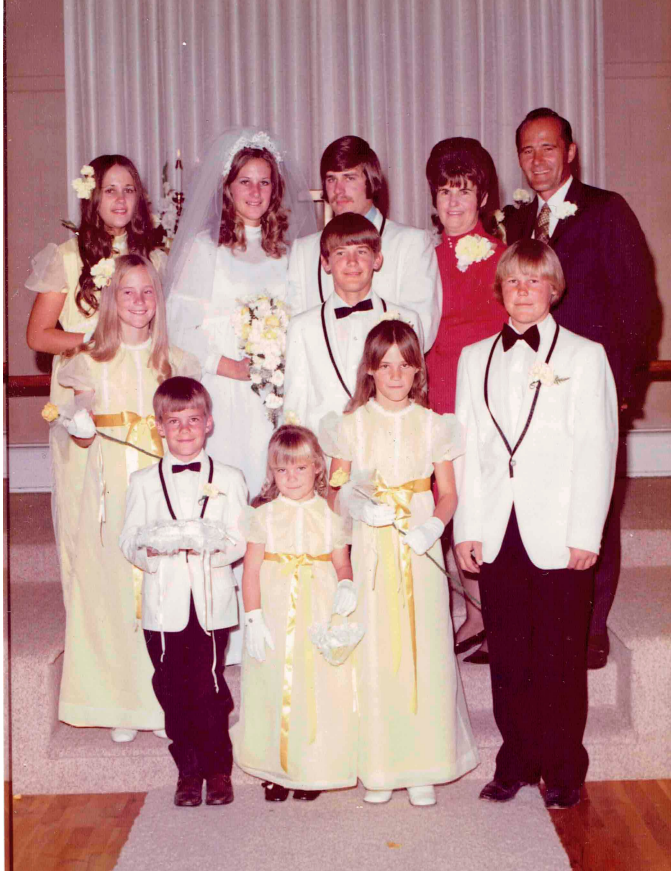
Immanuel has been a big part of our growing family's life. I met my husband Jeff Westberg here at Immanuel. His family, Glen and Mildred Westberg, were also members of Immanuel. Jeff moved here with his family at the age of two. Jeff and I both attended Sunday School here, were confirmed and were married here by Pastor Hill. Jeff and I both served on the Church Council, and I have taught Sunday School, Bible School, and was a youth group leader and member years ago of the Altar Guild. Jeff and my dad served on the



Julie and Jeff Westberg, Bryan, Jody, Zach and Jamie in 1990



Julie and Jeff Westberg on their wedding day, October 21, 1972, with their parents John and Audrey Zwingelberg and Glen and Millie Westberg.



Church Council and our mothers belonged to the Ladies Aid. My mother also sang in the choir for many years. Our children were baptized and confirmed at Immanuel and our son was married here by Pastor Miller and Pastor Baer. All but one of our grandchildren have been baptized here and three of them confirmed at Immanuel.

Our family, on my side, has now grown to 109 members. As our family grew in numbers Immanuel Lutheran Church has been a part of each of these lives in some way — through baptism, Sunday School, confirmation, acolyte, children’s choir, marriage and funerals. Immanuel has been a place of God’s word and love for our family and has been blessed with wonderful pastors, organists and great members of the church. My dad always said, “all that matters in life is faith and family” and Immanuel has blessed us with both.

John and Audrey Zwingelberg with their children, Julie, Janelle, David, Rick, Holly, Heidi, Scott and Kathi on the day of Jeff and Julie Westberg’s wedding.



John and Audrey Zwingelberg family



Christmas 2019

Pastors of Immanuel

Pastor A. H. Trygstad	1921 - 1922
Pastor M. E. Hauge	1923 - 1925
Pastor R. O. Aga	1925 - 1927
Pastor O. G. Malmin	1927 - 1928
Pastor Irvin A. Suby	1928 - 1933
Pastor Orlando M. Skindrud	1933 - 1940
Pastor Ralph L. Okland	1940 - 1946
Pastor E. Melvin Bremer	1947 - 1953
Pastor Verlyn O. Smith	1954 - 1955
Pastor Harvey A. Grote	1956 - 1960
Pastor Lloyd Ziebarth	1960 - 1965
Pastor H. W. Reinke	1965 - 1966
Pastor Roy Gilbertson	1966 - 1967
Pastor Jack H. Hill	1967 - 1989
Pastor Kenneth Dugan	1989 - 1990
Pastor William A. Behrend	1990 - 1994
Pastor Lloyd L. Miller	1993 - 2001
Pastor David J. Baer	1994 - present

Presidents and Vice Presidents

	President	Vice President
1921	Pastor A. H. Tygstad	
1922	Nels Olson	
1923	Jacob "Jack" Hansen	
1924	Jacob Hansen	
1925	Jacob Hansen	
1926	Pastor Aga	
1927	Pastor Aga	
1928	Pastor Malmin	
1929	Pastor Suby	
1930	Pastor Suby	
1931	Pastor Suby	
1932	Pastor Suby	
1933	Pastor Suby	
1934	Pastor Skindrud	
1935	Pastor Skindrud	
1936	Pastor Skindrud	
1938	Pastor Skindrud	
1939	J. P. Jensen	
1940	J. P. Jensen	Pastor Skindrud
1941	J. P. Jensen	Pastor Okland
1942	Ed Weisman	Pastor Okland
1943	Ed Weisman	Pastor Okland
1944	Ed Weisman	Pastor Okland
1945	Selmar Fager	Pastor Okland
1946	Selmar Fager	Pastor Okland
1947	Selmar Fager	Paster Bremer
1948	Selmar Fager	Pastor Bremer
1949	Alvin Jensen	Pastor Bremer
1950	Alvin Jensen	Pastor Bremer
1951	Alvin Jensen	Pastor Bremer
1952	Ben Millis	Pastor Bremer
1953	Ben Millis	Pastor Bremer
1954	Ben Millis	Pastor Smith
1955	Ben Millis	Pastor Smith
1956	Glen Westberg	Pastor Grote
1957	Glen Westberg	Pastor Grote
1958	Glen Westberg	Pastor Grote
1959	Glen Westberg	Pastor Grote
1960	Glen Westberg	Pastor Grote
1961	Glen Westberg	Pastor Ziebarth
1962	Alvin Jensen	Pastor Ziebarth
1963	Alvin Jensen	Pastor Ziebarth
1964	Merle Smith	Pastor Ziebarth
1965	Alvin Jensen	Pastor Ziebarth
1966	Alvin Jensen	Pastor Reinke
1967	John Grimsbo	
1968	Tony Westberg	
1969	Tony Westberg	Pastor Hill

1970	Wendy Richter	Pastor Hill
1971	Wendy Richter	Pastor Hill
1972	Wendy Richter	Pastor Hill
1973	Wendy Richter	Pastor Hill
1974	Merlyn Aker	Guy Balo
1975	Guy Balo	Jim Waterson
1976	Jim Waterson	John Sogge
1977	Guy Balo	Pastor Hill
1978	Guy Balo	Pastor Hill
1979	Guy Balo	Pastor Hill
1980	Jim Waterson	Pastor Hill
1981	Adolph Kauk	Pastor Hill
1982	Adolph Kauk	Pastor Hill
1983	John Sogge	Pastor Hill
1984	Don Dubbe	Pastor Hill
1985	Merlyn Aker	Pastor Hill
1986	Guy Balo	Pastor Hill
1987	John Zwingelberg	Pastor Hill
1988	Adolph Kauk	Pastor Hill
1989	Bill Waterson	Pastor Hill
1990	Tony Westberg	Pastor Dugan
1991	John Zwingelberg	Pastor Behrend
1992	Marv Hankel	Pastor Behrend
1993	Marv Hankel	Pastor Behrend
1994	Darrell Pulscher	Pastor Miller
1995	Darrell Pulscher	Pastor Miller
1996	Darrell Pulscher	Pastor Miller
1997	John Sogge	Pastor Miller
1998	Lonuld Balo	Pastor Miller
1999	Lonuld Balo	Pastor Miller
2000	Lonuld Balo	Pastor Baer
2001	Lonuld Balo	Pastor Baer
2002	Lonuld Balo	Jim Bowles
2003	Jim Bowles	Marv Hankel
2004	Marv Hankel	Doris Richter
2005	Marv Hankel	Rick Heinrich
2006	Doris Richter	Rick Heinrich
2007	Doris Richter	Rick Heinrich
2008	Doris Richter	Darrell Pulscher
2009	Doris Richter	Darrell Pulscher
2010	Darrell Pulscher	Tony Rath
2011	Darrell Pulscher	Tony Rath
2012	Darrell Pulscher	Tony Rath
2013	Alona Westberg	Tony Rath
2014	Alona Westberg	Loren Christensen
2015	Loren Christensen	Jon Iverson
2016	Jon Iverson	Loren Christensen
2017	Jon Iverson	Wayne Kunz
2018	Bob Grams	Ray Follum
2019	Bob Grams	Linda Beulke
2020	Bob Grams	Linda Beulke
2021	Bob Grams	Linda Beulke

Secretaries and Treasurers

	Secretary	Treasurer
1921	William Blomberg	Hans Carstensen
1922	J. P. "Pete" Jensen	William Blomberg
1923	J. P. Jensen	William Blomberg
1924	J. P. Jensen	Jacob "Jack" Hansen
1925	William Fager	Jacob Hansen
1926	William Fager	Fred Loose
1927	William Fager	Fred Loose
1928	William Fager	William Fager
1929	A. W. Fager	A.W. Fager
1930	A. W. Fager	A. W. Fager
1931	A. W. Fager	A. W. Fager
1932	A. W. Fager	A. W. Fager
1933	A. W. Fager	A. W. Fager
1934	A. W. Fager	A. W. Fager
1935	A. W. Fager	A. W. Fager
1936	A. W. Fager	A. W. Fager
1937	A. W. Fager	A. W. Fager
1938	A. W. Fager	A. W. Fager
1939	E. A. Christensen	A. W. Fager
1940	Martin Jacobson	Hugh Wonder
1941	David Clover	Hugh Wonder
1942	Andrew Hansen	Andrew Hansen
1943	Andrew Hansen	Andrew Hansen
1944	Andrew Hansen	Andrew Hansen
1945	William Fager	William Fager
1946	William Fager	William Fager
1947	William Fager	William Fager
1948	William Fager	William Fager
1949	William Fager	J. P. "Pete" Jensen
1950	John Trohkimoinen	J. P. Jensen
1951	John Trohkimoinen	J. P. Jensen
1952	John Trohkimoinen	J. P. Jensen
1953	John Trohkimoinen	J. P. Jensen
1954	Alvin Jensen	J. P. Jensen
1955	Alvin Jensen	J. P. Jensen
1956	Alvin Jensen	J. P. Jensen
1957	John Sogge	J. P. Jensen
1958	John Sogge	J. P. Jensen
1959	John Sogge	J. P. Jensen
1960	John Sogge	J. P. Jensen
1961	Lloyd Loughlin	J. P. Jensen
1962	Lloyd Loughlin	J. P. Jensen
1963	Lloyd Loughlin	J. P. Jensen, Glen Westberg
1964	Willard Sieloff	Glen Westberg
1965	Willard Sieloff	Glen Westberg
1966	Willard Sieloff	Glen Westberg
1967	Wendy Richter	Arthur Ankerson
1968	Wendy Richter	George Kymala

1969	John Zwingelberg	George Kymala
1970	Sally O'Dea	John LaVoy Jr.
1971	Sally O'Dea	John LaVoy Jr.
1972	Lloyd Loughlin	John LaVoy Jr.
1973	Larry Wanhanen	John LaVoy Jr.
1974	Audrey Zwingleberg	John LaVoy Jr.
1975	Audrey Zwiigelberg	John LaVoy Jr.
1976	Audrey Zwingelberg	Merlyn Aker
1977	Deb Schmidt	Merlyn Aker
1978	Deb Schmidt	Merlyn Aker
1979	Becky Waterson	Duane Quail
1980	Becky Waterson	Duane Quail
1981	Kyla Balo Thompson	Duane Quail
1982	Kyla Thompson	Duane Quail
1983	Kyla Thompson	Duane Quail
1984	Kyla Thompson	Duane Quail
1985	Kyla Thompson	Duane Quail
1986	Kyla Thompson	Duane Quail
1987	Alan Aker	Duane Quail
1988	Alan Aker	Duane Quail
1989	Alan Aker	Duane Quail
1990	Jordice Leaver	Judy Huisenga
1991	Kathie Flagstad	Judy Huisenga
1992	Jordice Leaver	Judy Huisenga
1993	Kathie Flagstad	Judy Huisenga
1994	Janelle Arehart	Bruce Flagstad
1995	Janelle Arehart	Bruce Flagstad
1996	Joanne Rath	Bruce Flagstad
1997	Joanne Rath	Bruce Flagstad
1998	Janelle Arehart	Bruce Flagstad
1999	Janelle Arehart	Bruce Flagstad
2000	Deb Heinrich	Bruce Flagstad
2001	Deb Heinrich	Bruce Flagstad
2002	Deb Heinrich	Bruce Flagstad
2003	Aaron Smith	Bruce Flagstad
2004	Aaron Smith	Bruce Flagstad
2005	Doris Richter	Bruce Flagstad
2006	Barb Bowles	Bruce Flagstad
2007	Barb Bowles	Bruce Flagstad
2008	Barb Bowles	Bruce Flagstad
2009	Todd Knutson	Bruce Flagstad
2010	Todd Knutson	Bruce Flagstad
2011	Todd Knutson	Bruce Flagstad
2012	Todd Knutson	Bruce Flagstad
2013	Todd Knutson	Bruce Flagstad
2014	Dianna Jorgenson	Bruce Flagstad
2015	Dianna Jorgenson	Bruce Flagstad
2016	Dianna Jorgenson	Bruce Flagstad
2017	Bob Grams	Bruce Flagstad
2018	Wayne Kunz	Bruce Flagstad
2019	Marilyn Bates	Bruce Flagstad
2020	Marilyn Bates	Charles Follette
2021	Toby Rath	Charles Follette

Trustees - Church Council

1921	A. W. Fager	Fred Loose	Nels Olson	
1922	A. W. Fager	Jacob Hansen	Fred Loose	
1923	A. W. Fager	Fred Loose		
1924	A. W. Fager	J. P. Jensen	Nels Olson	
1925	J. P. Jensen	Nels Olson		
1926	A. W. Fager	J. P. Jensen	Nels Olson	
1927	A. W. Fager	J. P. Jensen	Nels Olson	
1928	A. W. Fager	J. P. Jensen	Nels Olson	
1929	J. P. Jensen	Nels Olson	Ed Weisman	
1930	George Fabricius	J. P. Jensen	Nels Olson	Ed Weisman
1931	George Fabricius	J. P. Jensen	Nels Olson	Ed Weisman
1932	George Fabricius	J. P. Jensen	Nels Olson	Ed Weisman
1933	George Fabricius	J. P. Jensen	Ed Weisman	
1934	E. A. Christensen	J. P. Jensen	Ed Weisman	
1935	E. A. Christensen	J. P. Jensen	Ed Weisman	
1936	E. A. Christensen	A. W. Fager	J. P. Jensen	
1938	Nels Christensen	A. W. Fager	Martin Jacobson	
1939	Martin Jacobson	Nels Christensen	George Fabricius	
1940	Nels Christensen	George Fabricius	A. W. Fager	
1941	George Fabricius	A. W. Fager	Martin Jacobson	
1942	George Fabricius	Martin Jacobson	Ed Weisman	
1943	George Fabricius	Martin Jacobson	Ed Weisman	
1944	David Clover	Martin Jacobson	Ed Weisman	
1945	Jim Fabricius	William Fager	Ed Weisman	
1946	Jim Fabricius	William Fager	Ed Weisman	
1947	Jim Fabricius	William Fager	Ed Weisman	
1948	Jim Fabricius	William Fager	Ed Weisman	
1949	Jim Fabricius	Robert Fagering	Ed Weisman	
1950	Jim Fabricius	Robert Fagering	Ed Weisman	
1951	Jim Fabricius	Robert Fagering	Ed Weisman	
1952	Jim Fabricius	Robert Fagering	Ed Weisman	
1953	Jim Fabricius	Robert Fagering	Ed Weisman	
1954	Jim Fabricius	Robert Fagering	Ed Weisman	
1955	Jim Fabricius	Robert Fagering	Henry Hegge	
1956	Jim Fabricius	Robert Fagering	Henry Hegge	
1957	Jim Fabricius	Robert Fagering	Henry Hegge	
1958	Jim Fabricius	Robert Fagering	Henry Hegge	
1959	Jim Fabricius	Robert Fagering	Alvin Jensen	
1960	Jim Fabricius	Robert Fagering	Alvin Jensen	
1961	Jim Fabricius	William Fager	Alvin Jensen	
1962	Jim Fabricius	William Fager	John Grimsbo	
1963	William Fager	John Grimsbo	Don "Bat" Ridley	
1964	Alvin Jensen	John Grimsbo	Don "Bat" Ridley	

1965	John Grimsbo	Marvin Melhoff	Don "Bat" Ridley
1966	John Grimsbo	Lloyd Loughlin	John Sogge
1967	Lloyd Loughlin	John Sogge	Glen Westberg
1968	John LaVoy Jr.	Lloyd Loughlin	John Sogge
1969	John LaVoy Jr.	Wendy Richter	John Sogge
1970	Ralph Lane	Tony Westberg	Wanio Wanhanen
1971	Ralph Lane	Richard Rotenberger	Wanio Wanhanen
1972	Richard Rotenberger	DuWayne Schoon	Wanio Wanhhanen
1973	Guy Balo	Richard Rotenberger	DuWayne Schoon
1974	Merlyn Aker John Sogge	Guy Balo Jim Waterson	John LaVoy Jr. Jeff Westberg
1975	Merlyn Aker Doris Richter	Guy Balo John Sogge	John LaVoy Jr. Jim Waterson
1976	Merlyn Aker Don Ryther	John LaVoy Jr. John Sogge	Doris Richter Jim Waterson
1977	Merlyn Aker Doris Richter	Guy Balo Don Ryther	John LaVoy Jr. David Wanhanen
1978	Merlyn Aker Duane Quail	Guy Balo Don Ryther	Joe Opie David Wanhanen
1979	Guy Balo John Sogge	Joe Opie David Wanhanen	Duane Quail Jim Waterson
1980	Adolph Kauk John Sogge	Joe Opie Jim Waterson	Duane Quail Don Wolkenhauer
1981	Merlyn Aker John Sogge	Kyla Balo Thompson Ron Pierce	Adolph Kauk Jim Waterson
1982	Merlyn Aker Adolph Kauk	Don Dubbe Ron Pierce	Chuck Ginter Kyla Thompson
1983	Don Dubbe Ron Pierce	Bruce Flagstad John Sogge	Chuck Ginter Kyla Thompson
1984	Merlyn Aker Bruce Flagstad	Guy Balo Chuck Ginter	Don Dubbe John Sogge
1985	Merlyn Aker Charles Ginter	Guy Balo John Sogge	Bruce Flagstad Tony Westberg
1986	Merlyn Aker Max Rolph	Guy Balo Tony Westberg	Chuck Ginter John Zwingelberg
1987	Alan Aker Max Rolph	Chuck Ginter Tony Westberg	Adolph Kauk John Zwingelberg

1988	Alan Aker Bill Waterson	Adolph Kauk Tony Westberg	Max Rolph John Zwingelberg
1989	Alan Aker Bill Waterson	Adolph Kauk Tony Westberg	Max Rolph John Zwingelberg
1990	Guy Balo Bill Waterson	Bill Pawlowski Tony Westberg	Max Rolph John Zwingelberg
1991	Guy Balo Max Rolph	Kathie Flagstad John Zwingelberg	Darrel Pulscher Pawlowksi/J Leaver
1992	Guy Balo Jordice Leaver	Kathie Flagstad Darrell Pulscher	Marv Hankel John Sogge
1993	Kathie Flagstad John Sogge	Marv Hankel Deb Schmidt	Darrell Pulscher Russell Yuill
1994	Janelle Arehart John Sogge	Marv Hankel Deb Schmidt	Darrell Pulscher Russell Yuill
1995	Janelle Arehart Deb Schmidt	Dudley Nelson Julie Westberg	Darrell Pulscher Russell Yuill
1996	Janelle Arehart Darrell Pulscher	Dennis Mohni Joanne Rath	Dudley Nelson Julie Westberg
1997	Janelle Arehart Joanne Rath	Lonny Balo John Sogge	Dennis Mohni Julie Westberg
1998	Janelle Arehart Joanne Rath	Lonny Balo Gene Thompson	Dennis Mohni Julie Westberg
1999	Janelle Arehart Don Dubbe	Dale Ball Gene Thompson	Lonny Balo Julie Westberg
2000	Dale Ball Deb Henirich	Lonny Balo Gene Thompson	Don Dubbe Julie Westberg
2001	Dave Arehart Jim Bowles	Dale Ball Don Dubbe	Lonny Balo Gene Thompson
2002	Dave Arehart Jim Bowles	Dale Ball Don Dubbe	Lonny Balo Aaron Smith
2003	Dave Arehart Larry Kymala	Jim Bowles Rodney Reed	Marvin Hankel Doris Richter
2004	Marvin Hankel Rodney Reed	Rick Heinrich Doris Richter	Larry Kymala Vaughn Smith
2005	Mike Grant Larry Kymala	Marvin Hankel Doris Richter	Rick Heinrich Vaughn Smith

2006	Barb Bowles Doris Richter	Mike Grant Vaughn Smith	Rick Heinrich Carletta Vasknetz
2007	Barb Bowles Doris Richter	Rick Heinrich Vaughn Smith	Darrell Pulscher Carletta Vasknetz
2008	Barb Bowles Tony Rath	Marlyn Haiwick Doris Richter	Darrell Pulscher Carletta Vasknetz
2009	Marlyn Haiwick Tony Rath	Todd Knutson Doris Richter	Darrell Pulscher Alona Westberg
2010	Marlyn Haiwick Tony Rath	Todd Knutson Leon Sandidge	Darrell Pulscher Alona Westberg
2011	Marlyn Haiwick Tony Rath	Todd Knutson Leon Sandidge	Darrell Pulscher Alona Westberg
2012	Marlyn Haiwick Tony Rath	Todd Knutson Leon Sandidge	Darrell Pulscher Alona Westberg
2013	Arnie Beulke Todd Knutson	Marlyn Haiwick Paul Swisher	Dianna Jorgenson Alona Westberg
2014	Arnie Beulke Todd Knutson	Loren Christensen Paul Swisher	Dianna Jorgenson Alona Westberg
2015	Arnie Beulke Dianna Jorgenson	Loren Christensen Paul Swisher	Jon Iverson Carletta Vasknetz
2016	Loren Christensen John Jorgenson	Jon Iverson Wayne Kunz	Dianna Jorgenson Carletta Vasknetz
2017	Ray Follum John Jorgenson	Bob Grams Wayne Kunz	Jon Iverson Carletta Vasknetz
2018	Marilyn Bates Bob Grams	Linda Beulke John Jorgenson	Ray Follum Wayne Kunz
2019	Marilyn Bates Bob Grams	Linda Beuke John Jorgenson	Ray Follum Wayne Kunz
2020	Marilyn Bates Gail Hemeyer	Linda Beulke Brit Porterfield	Bob Grams Toby Rath
2021	Linda Buelke Brit Porterfield	Bob Grams Toby Rath	Gail Hemeyer Cindy Shetler

Ladies Aid President and Vice President

	President	Vice President
1921	Vera Olson	Nettie Johnson
1922	Nettie Johnson	Hanna Fager
1923	Hanna Fager	
1925	Katrina Jensen	Hanna Fager
1926	Katrina Jensen	Mary LeMaster
1927	Katrina Jensen	Vera Olson
1928	Katrina Jensen	Vera Olson
1929	Katrina Jensen	Nettie Johnson
1930	Katrina Jensen	Olive Hansen
1931	Katrina Jensen	
1934	Gladys Fager	Katrina Jensen
1935	Gladys Fager	Katrina Jensen
1936	Gladys Fager	Katrina Jensen
1938	Gladys Fager	Katrina Jensen
1939	Ruth E. Wonder	Katrina Jensen
1940	Ruth E. Wonder	Gladys Fager
1941	Ruth E. Wonder	Gladys Fager
1942	Ruth E. Wonder	Gladys Fager
1943	Ruth E. Wonder	Olive Hansen
1944	Olive Hansen	Gladys Fager
1945	Gladys Fager	Lucille Fagering
1946	Gladys Fager	Lucille Fagering
1947	Katrina Jensen	Helen Fager
1948	Saima Trohkimoinen	Lucille Schrieber
1949	Lucille Schrieber	Saima Trohkimoinen
1950	Lucille Schrieber	Saima Trohkimoinen
1951	Katrina Jensen	Lucille Schrieber
1952	Katrina Jensen	Lucille Schrieber
1953	Katrina Jensen	Lucille Schrieber
1954	Katrina Jensen	Lucille Schrieber
1955	Katrina Jensen	Mrs. Victor Halverson
1956	Mrs. Victor Halverson	Edna Telford
1957	Mrs. Victor Halverson	Edna Telford
1958	Edna Telford	Millie Hegge
1959	Millie Westberg	Katrina Jensen
1960	Millie Westberg	Katrina Jensen
1961	Millie Westberg	Katrina Jensen
1962	Millie Westberg	Katrina Jensen
1963	Millie Westberg	Georgia Jensen
1964	Saima Trohkimoinen	Liz Loughlin
1965	Liz Loughlin	Jenny Sperle
1966	Liz Loughlin	Jenny Sperle
1967	Doris Richter	Audrey Zwingelberg
1968	Millie Westberg	Audrey Zwingelberg
1969	Millie Westberg	Lois LaVoy

1970	Lois LaVoy	Audrey Zwingleberg
1971	Lois LaVoy	Audrey Zwingelberg
1972	Lois LaVoy	Audrey Zwingelberg
1973	Lois LaVoy	Audrey Zwingelberg
1974	Pat Cottrill	Liz Loughlin
1975	Pat Cottrill	Liz Loughlin
1976	Alice Wanhanen	Martha Rapp
1977	Alice Wanhanen	Martha Rapp
1978	Alice Wanhanen	Martha Rapp
1979	Alice Wanhanen	Martha Rapp
1980	Martha Rapp	Alona Westberg
1981	Martha Rapp	Alona Westberg
1982	Martha Rapp	Alona Westberg
1983	Martha Rapp	Alona Westberg
1984	Ilene Balo	Audrey Zwingelberg
1985	Ilene Balo	Audrey Zwingleberg
1986	Ilene Balo	Jordice Leaver
1987	Ilene Balo	Jordice Leaver
1988	Jordice Leaver	JoEllen Rolph
1989	Jordice Leaver	JoEllen Rolph
1990	Jordice Leaver	JoEllen Rolph
1991	Jordice Leaver	JoEllen Rolph
1992	Jordice Leaver	Cyndi Aker
1993	Jordice Leaver	Cyndi Aker
1994	Jordice Leaver	Cyndi Aker
1995	Jordice Leaver	Cyndi Aker
1996	Jordice Leaver	Linda Meier
1997	Jordice Leaver	Linda Meier
1998	Jordice Leaver	Linda Meier
1999	Linda Meier	Alona Westberg
2000	Linda Meier	Alona Westberg
2001	Alona Westberg	
2002	Virginia Rath	
2006	Virginia Rath	
2007	Virginia Rath	
2008	Virginia Rath	
2009	Virginia Rath	
2010	Virginia Rath	
2011	Alona Westberg	
2012	Alona Westberg	
2013	Alona Westberg	
2014	Alona Westberg	
2015	Alona Westberg	
2016	Alona Westberg	
2017	Alona Westberg	
2018	Alona Westberg	
2019	Alona Westberg	
2020	Alona Westberg	
2021	Alona Westberg	

Ladies Aid Secretary and Treasurer

	Secretary	Treasurer
1921	Mrs. Wm. Blomberg	Mrs. Fabricuis, Olive Hansen
1922	Katrina Jensen	Olena Olson
1925	Nettie Johnson	Olive Hansen
1926	Mrs. O. W. Williams	Olive Hansen
1927	Mrs. G. Grenfell	Olive Hansen
1928	Gladys Olson	Hanna Fager
1929	Gladys Olson	Hanna Fager
1930	Gladys Olson	Hanna Fager
1931	Gladys Fager	Hanna Fager
1934	Mrs. E. A. Christensen	Hanna Fager
1935	Mrs. E. A. Christensen	Hanna Fager
1936	Ruth Skindrud	Hanna Fager
1938	Mrs. Jacobson	Hanna Fager
1939	Mrs. Jacobson	Gladys Fager
1940	Mrs. Jacobson	Katrina Jensen
1941	Saima Trohkimoinen	Katrina Jensen
1942	Saima Trohkimoinen	Katrina Jensen
1943	Saima Trohkimoinen	Katrina Jensen
1944	Mrs. Jacobson	Katrina Jensen
1945	Katrina Jensen	Katrina Jensen
1946	Helen Fager	Katrina Jensen
1947	Mrs. Marion Engebretson	Lucille Fagering
1948	Helen Fager	Lucille Fagering
1949	Mrs. Lyle Goodburn	Lucille Fagering
1950	Katrina Jensen	Lucille Fagering
1951	Lucille Fagering	Georgia Jensen
1952	Lucille Fagering	Georgia Jensen
1953	Mrs. Don West	Georgia Jensen
1954	Mrs. Don West	Georgia Jensen
1955	Florence Schrieber	Georgia Jensen
1956	Mrs. E. J. Husebye	Millie Westberg
1957	Ann Sogge	Millie Westberg
1958	Ann Sogge	Millie Westberg
1959	Mrs. Don West	Saima Trohkimoinen
1960	Louise Cooper	Saima Trohkimoinen
1961	Louise Cooper	Georgia Jensen
1962	Liz Loughlin	Georgia Jensen
1963	Liz Loughlin	Pauline Smith
1964	Jenny Sperle	Pauline Smith/Georgia Jensen
1965	Katrina Jensen	Georgia Jensen
1966	Katrina Jensen	Millie Westberg
1967	Alona Westberg	Millie Westberg
1968	Alona Westberg	Doris Richter
1969	Alona Westberg	Doris Richter
1970	Doris Richter	Alona Westberg
1971	Doris Richter	Alona Westberg

1972	Alice Wanhanen	Alona Westberg
1973	Alice Wanhanen	Alona Westberg
1974	Alice Wanhanen	Alona Westberg
1975	Alice Wahanen	Alona Westberg
1976	Lela Rittberger	Ilene Balo
1977	Evelyn Ryther	Ilene Balo
1978	Evelyn Ryther	Ilene Balo
1979	Evelyn Ryther	Ilene Balo
1980	Liz Loughlin	Evelyn Ryther, Ilene Balo
1981	Liz Loughlin	Ilene Balo
1982	Alice Wanahnen	Ilene Balo
1983	Alice Wanhanen	Ilene Balo
1984	Phyllis Guenin, Martha Rapp	Alona Westberg
1985	Martha Rapp	Alona Westberg
1986	Betty Aker	Darlene Aker, Alona Westberg
1987	Betty Aker	Darlene Aker
1988	Alice Wanhanen	Darlene Aker
1989	Alice Wanhanen	Ilene Balo
1990	Alice Wanhanen	Ilene Balo
1991	Alice Wanhanen	Ilene Balo
1992	Liz Loughlin	Ilene Balo
1993	Liz Loughlin	Virginia Rath
1994	Liz Loughlin, June Aadland	Virginia Rath
1995	Betty Aker	Virginia Rath
1996	Betty Aker	Virginia Rath
1997	Betty Aker	Virginia Rath
1998	Betty Aker	Virginia Rath
1999	Alona Westberg	Virginia Rath
2000	Alona Westberg	Virginia Rath
2001	Alona Westberg	Virginia Rath
2002	Alona Westberg	Virginia Rath
2003	Alona Westberg	Virginia Rath
2004	Alona Westberg	Virginia Rath
2005	Alona Westberg	Virginia Rath
2006	Alona Westberg	Pat Walz
2007	Alona Westberg	Pat Walz
2008	Alona Westberg	Pat Walz
2009	Alona Westberg	Pat Walz
2010	Alona Westberg	Pat Walz
2011	Dorothy Pulscher	Pat Walz
2012	Dorothy Pulscher	Pat Walz
2013	Dorothy Pulscher	Pat Walz
2014	Dorothy Pulscher	Pat Walz
2015	Dorothy Pulscher	Pat Walz
2016	Dorothy Pulscher	Pat Walz
2017	Dorothy Pulscher	Pat Walz
2018	Dorothy Pulscher	Pat Walz
2019	Dorothy Pulscher	Pat Walz
2020	Dorothy Pulscher	Shelly Iverson
2021	Dorothy Pulscher	Shelly Iverson

Sunday School Superintendent

	Superintendent	Assistant Superintendent
1929	H.E. Hufendiels	Mrs. A. Peterson
1930	A. Peterson	Ellen Christiansen
1939	Mrs. Martin Jacobson	
1940	Luther Hendrickson	Shirley Clover
1952	Victor Halverson	
1955	Victor Halverson	
1956	Victor Halverson	
1957	Ann Sogge	Victor Halverson
1958	Ann Sogge	
1959	Ann Sogge	Gary Telford
1960	Lucille Fagering	John Sogge
1961	Lela Rittberger	
1962	Lela Rittberger	
1963	Lela Rittberger	John Sogge
1964	Averil Yuill	Mrs. John Sperle
1965	Averil Yuill	Mrs. John Sperle
1966	Georgia Jensen	Millie Westberg
1967	Doris Richter	Millie Westberg
1968	Millie Westberg	
1969		
1970	John Sogge	
1971	John Sogge, Doris Richter	
1972	Alona Westberg	
1973	Doris Richter	
1974	Alona Westberg	
1975	Alice Wanhanen	
1976	John Sogge	Sonja Westberg
1977	Alona Westberg	
1978	Ilene Balo	
1979	Evelyn Ryther	
1980	Alona Westberg	
1981	Alona Westberg	
1982	Alona Westberg	
1983	Alona Westberg	Andrew Westberg
1984	Alona Westberg	Andrew Westberg
1985	Alona Westberg	Andrew Westberg
1986	Alona Westberg	Andrew Westberg
1987	Alona Westberg	Andrew Westberg
1988	Alona Westberg	
1989	Alona Westberg	
1990	Alona Westberg	
1991	Alona Westberg	

1992	Alona Westberg
1993	Alona Westberg
1994	Alona Westberg
1995	Alona Westberg
1996	Alona Westberg
1997	Alona Westberg
1998	Alona Westberg
1999	Alona Westberg
2000	Alona Westberg
2001	Alona Westberg
2002	Alona Westberg
2003	Alona Westberg
2004	Alona Westberg
2005	Alona Westberg
2006	Janelle Arehart
2007	Ginger Smith
2008	Ginger Smith
2009	Ginger Smith
2010	Ginger Smith
2011	Ginger Smith
2012	Ginger Smith
2013	Ginger Smith
2014	Ginger Smith
2015	Ginger Smith
2016	Ginger Smith
2017	Ginger Smith
2018	Ginger Smith
2019	Ginger Smith
2020	Ginger Smith
2021	Ginger Smith

Church Finances

	Income	Expenses	Mission Giving
1921	\$767	\$764	
1922	\$199	\$202	
1923	\$117	\$110	
1924	\$211	\$211	
1925	\$1,230	\$1,205	
1926	\$399	\$389	
1927	\$452	\$420	
1928	\$295	\$228	
1929	\$545	\$501	\$25
1930	\$438	\$460	
1931	\$438	\$405	
1932	\$226	\$226	
1933	\$0	\$16	
1934	\$64	\$46	
1935	\$106	\$119	
1936	\$46	\$42	
1937	\$101	\$170	\$13
1938	\$242	\$205	\$15
1939			
1940			
1941			
1942			
1943			
1944	\$134		
1945	\$104	\$89	\$15
1946	\$366	\$408	\$26
1947	\$434	\$259	\$29
1948	\$388	\$264	\$80
1949			
1950	\$460	\$351	0
1951	\$662	\$541	\$124
1952	\$445	\$333	\$63
1953	\$618	\$738	
1954	\$534	\$4,03	\$318
1955	\$460	\$460	\$105
1956	\$662	\$541	\$124
1957	\$756	\$733	\$185
1958	\$804	\$918	\$226
1959	\$2,019	\$1,333	
1960	\$4,771	\$1,603	
1961	\$6,359	\$8,071	\$199
1962	\$4,241	\$4,039	\$326
1963	\$4,473	\$4,741	\$366
1964	\$4,613	\$4,347	\$318
1965	\$4,162	\$4,090	
1966	\$6,378	\$6,401	\$26
1967	\$4,841	\$4,914	
1968	\$5,350	\$5,158	\$345
1969	\$5,995	\$6,156	\$247

	Income	Expenses	Mission Giving
1970	\$6,224	\$6,266	\$297
1971	\$6,747	\$6,391	\$734
1972	\$6,528	\$6,631	\$1,038
1973	\$8,816	\$8,632	\$1,090
1974	\$7,265	\$7,704	\$1,360
1975	\$9,841	\$9,225	\$1,955
1976	\$7,796	\$6,595	\$2,099
1977	\$8,654	\$9,208	\$2,573
1978	\$10,411	\$8,949	\$3,250
1979	\$12,596	\$13,993	\$3,730
1980	\$11,634	\$15,892	\$3,782
1981	\$13,053	\$12,553	\$4,282
1982	\$17,456	\$13,999	\$5,315
1983	\$16,547	\$16,844	\$5,784
1984	\$17,605	\$17,881	\$5,879
1985	\$17,613	\$19,200	\$6,276
1986	\$19,216	\$18,979	\$6,192
1987	\$19,939	\$20,674	\$6,281
1988	\$22,041	\$21,943	\$5,607
1989	\$22,168	\$21,333	\$5,837
1990	\$41,846	\$47,262	\$4,922
1991	\$38,862	\$38,984	\$4,370
1992	\$41,877	\$37,631	\$4,111
1993	\$46,848	\$40,045	\$3,970
1994	\$45,812	\$48,702	\$3,746
1995	\$51,441	\$49,478	\$2,763
1996	\$49,474	\$53,454	\$3,971
1997	\$65,572	\$64,019	\$4,437
1998	\$57,363	\$57,834	\$4,683
1999	\$63,739	\$64,521	\$5,519
2000	\$77,781	\$79,041	\$6,082
2001	\$96,260	\$89,202	\$6,584
2002	\$84,838	\$76,940	\$6,801
2003	\$76,530	\$77,071	\$6,991
2004	\$83,451	\$89,973	\$9,079
2005	\$88,102	\$84,219	\$10,152
2006	\$100,901	\$103,913	\$11,119
2007	\$101,943	\$95,566	\$11,210
2008	\$135,561	\$137,672	\$12,588
2009	\$105,746	\$120,030	\$13,275
2010	\$112,403	\$103,061	\$13,115
2011	\$166,662	\$143,213	\$15,982
2012	\$171,377	\$160,738	\$20,961
2013	\$248,627	\$211,913	\$25,973
2014	\$184,100	\$162,683	\$30,820
2015	\$215,558	\$200,095	\$33,903
2016	\$226,275	\$171,707	\$36,282
2017	\$226,489	\$205,134	\$44,189
2018	\$217,165	\$206,606	\$51,911
2019	\$228,064	\$232,209	\$57,776
2020	\$179,560	\$189,374	\$55,367

Historic Population Figures

	Whitewood	Lawrence County	South Dakota
1880		13,218	98,268
1890	443	11,673	348,600
1900	311	17,897	401,570
1910	390	19,694	583,888
1920	339	13,029	636,547
1930	392	13,920	692,849
1940	267	19,093	642,961
1950	304	16,648	652,740
1960	470	17,075	680,514
1970	689	17,453	665,507
1980	821	18,339	690,768
1990	891	20,655	696,004
2000	844	21,802	754,844
2010	927	24,097	814,180
2020	990*	26,000*	886,667

* 2020 U.S. Census figures for Whitewood and Lawrence County had not been released when this was printed. Totals listed are estimates.

Acknowledgments of Thanks

Immanuel Lutheran Church Centennial Committee members: Linda Beulke, Doris Richter, Kim Ridley, Alona Westberg and Pastor David Baer.

Pastor David Baer for compiling the centennial history.

Alona Westberg who has served as “archivist” for Immanuel collecting documents and photos.

Marilyn Bates for her assistance in proofreading the manuscript and offering suggestions.

Other members of Immanuel who offered assistance by proofreading the manuscript and offering suggestions.

Shepherd of the Hills Lutheran Church in Lead for access to historic records and for their partnership in the Gospel throughout Immanuel’s history.

Lifetouch Inc. for permission to reprint photos from Immanuel’s pictorial directories from 1970, 1975, 1980 and 1991.

T & M Photographic Studio of Sturgis for permission to reprint photos from Immanuel’s pictorial directories from 2011 and 2015.

Deadwood History, Inc., Homestake Adams Research and Cultural Center for permission to reprint photos and document from their collection.

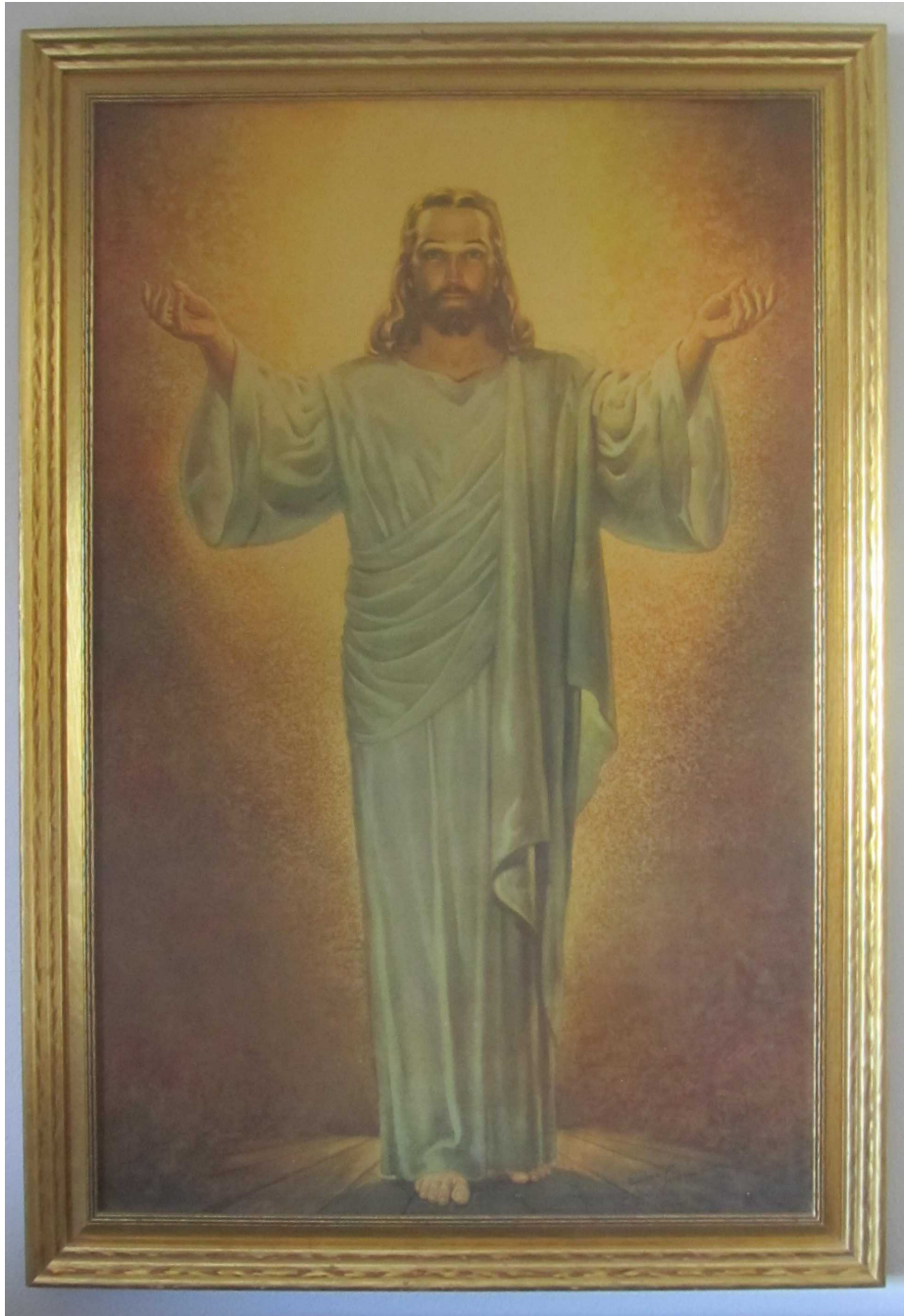
Note to the Reader

This book is an attempt to tell the story of Immanuel Lutheran Church. It was an effort of love and an effort to honor those faithful men and women who helped to start this congregation and to honor all of the faithful men and women and children since then who have called Immanuel their church.

The project was much larger task that could be accomplished in the limited time available in preparing for the June 13, 2021, centennial celebration.

The hope is to publish this document on Immanuel’s website and to provide updates and corrections to that document as needed. Please let me know if you note any omissions or have suggestions for improvements.

Pastor David James Baer



*The Lord bless you and keep you.
The Lord make his face shine on you
and be gracious to you.
The Lord look upon you with favor
and give you peace.*