

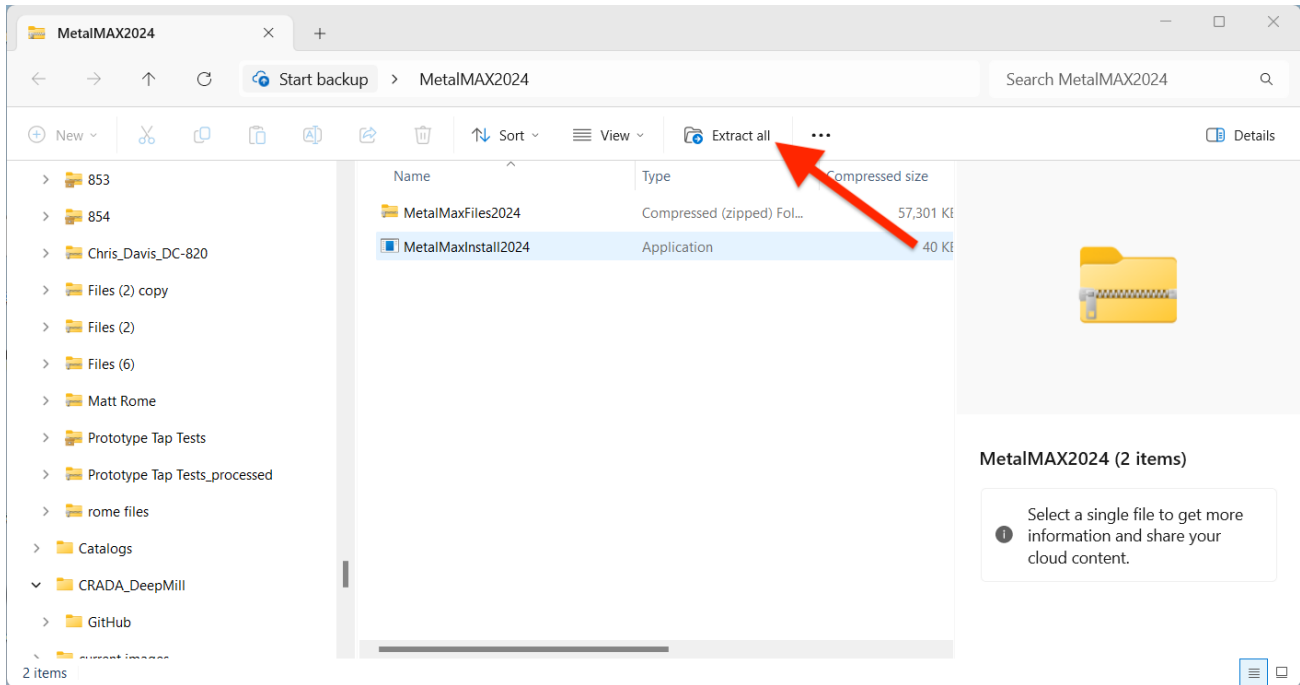
METALMAX TXF SOFTWARE INSTALLATION INSTRUCTIONS

Download the zip file to your desktop.

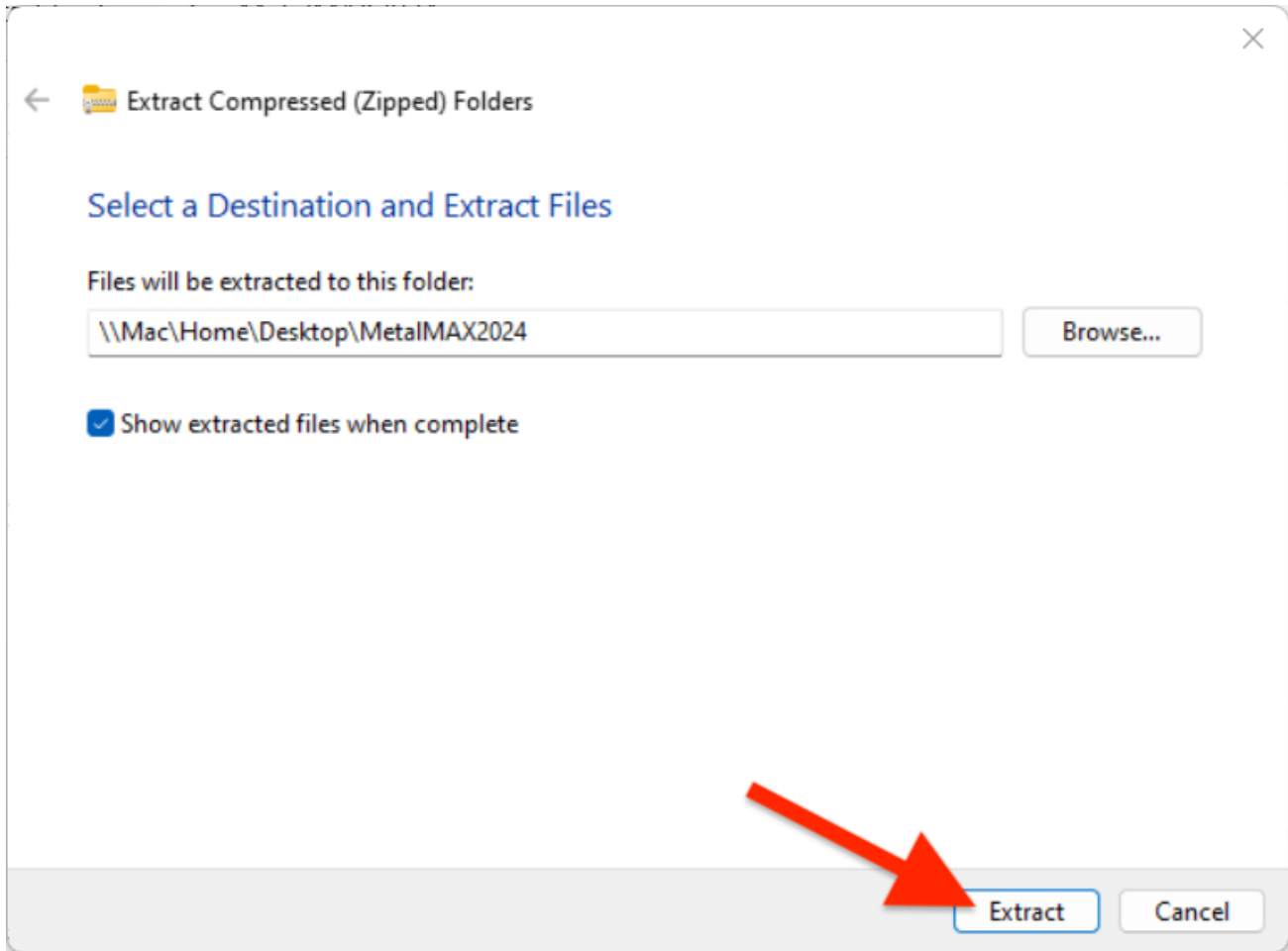


STEP 1: Click on SpeedCast install zip file.

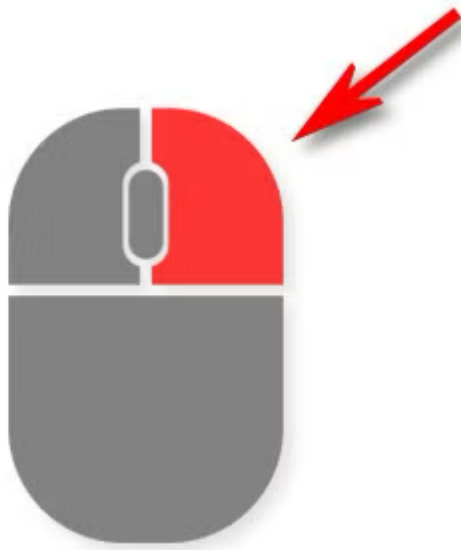
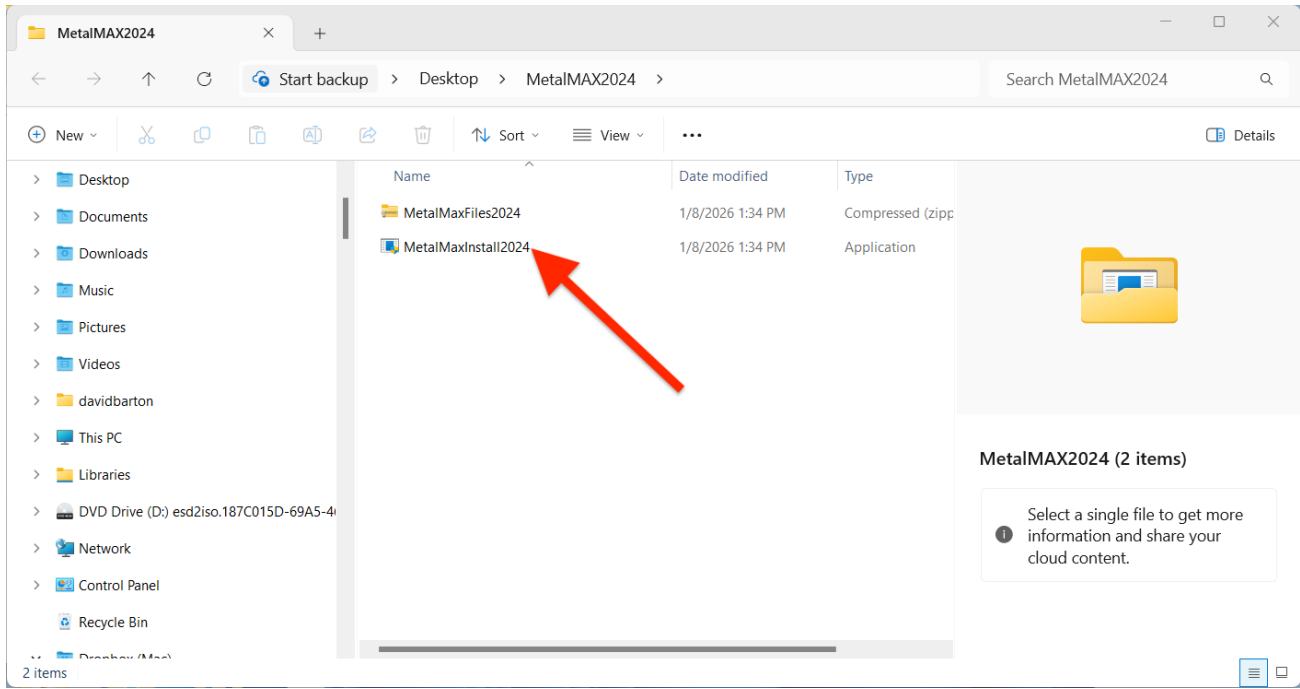
NOTE: You can install TXF on the same computer as SpeedCast and share the same databases and files. TXF cannot read SpeedCast tap test files.



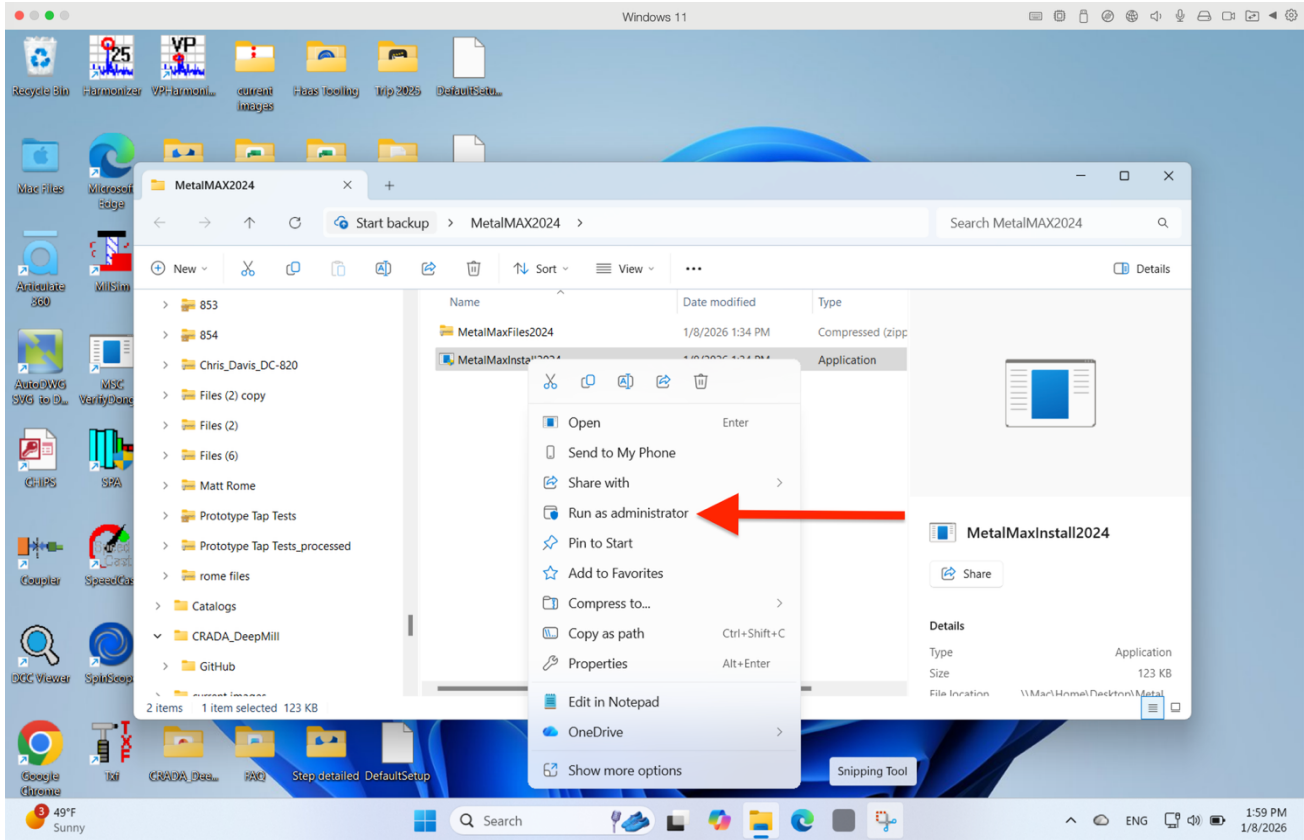
STEP 2: Click on "Extract All"



STEP 3: Use default destination. Click "Extract" button

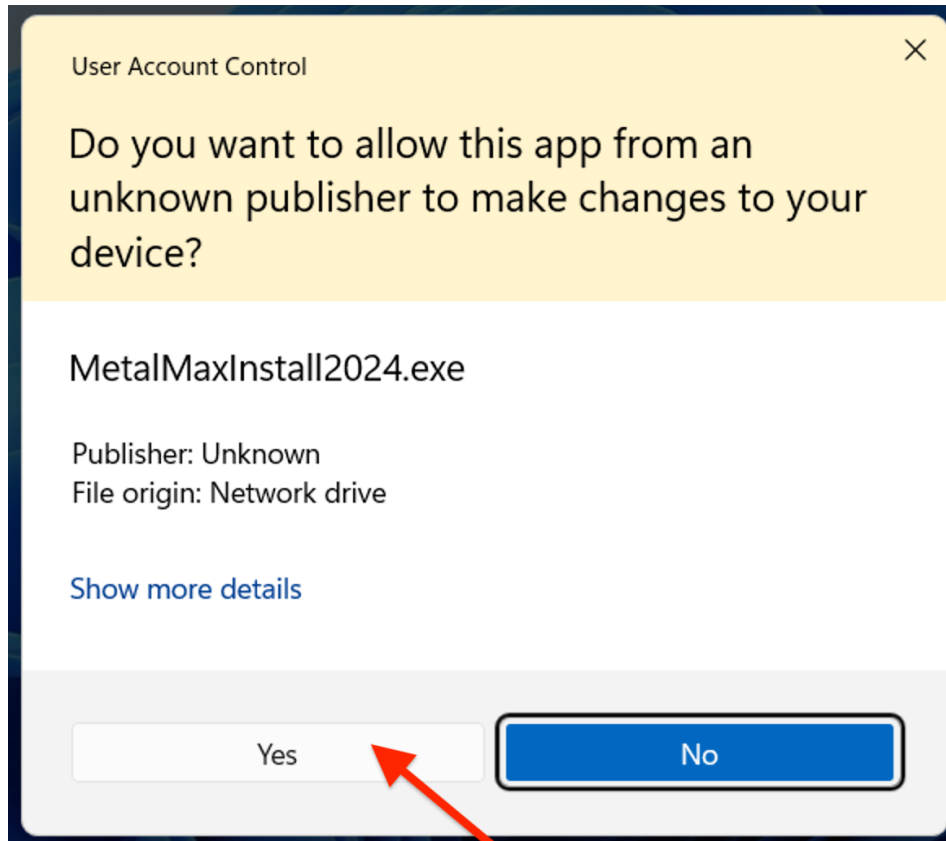


STEP 4: Right click on "MetalMaxInstall2026.exe".

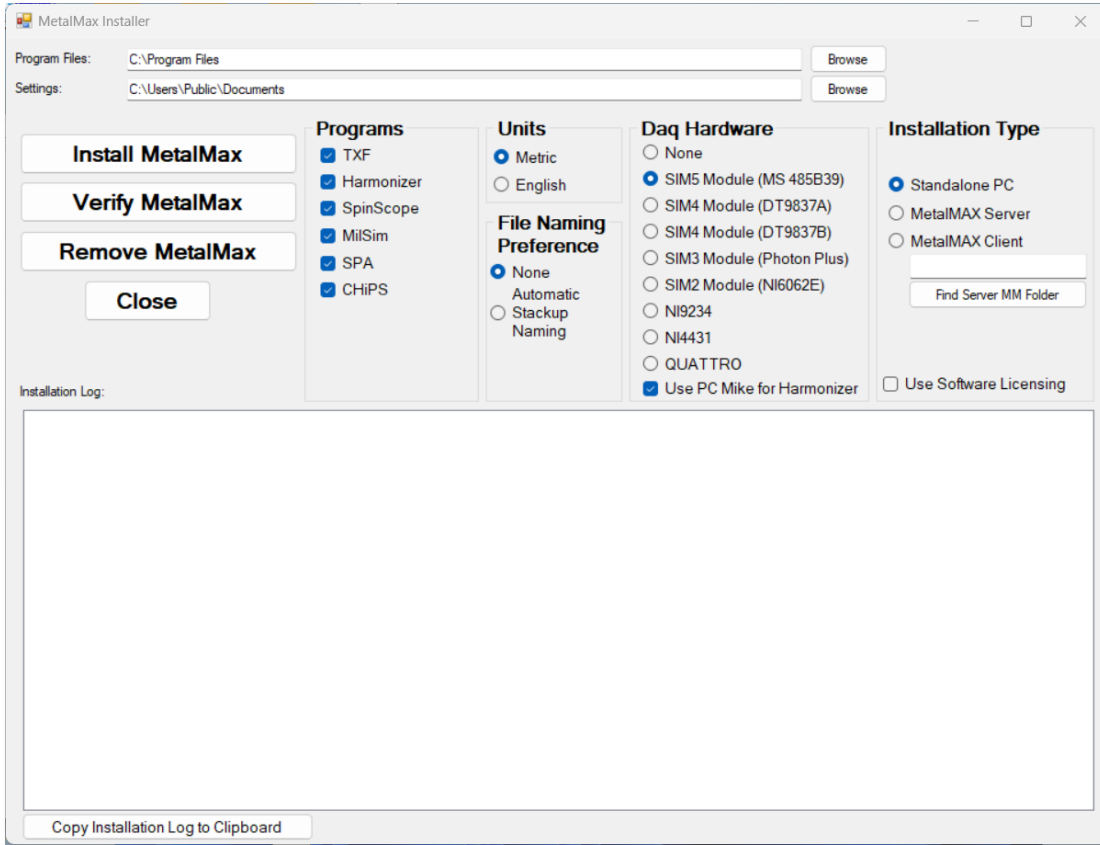


Click on **"Run as Administrator"**

Do not unzip the MetalMax Files!



STEP 5: If warning appears click "Yes".



STEP 6: Check that these are the default settings.

MLI License Agreement

This legal document is an agreement between you, the end user, and Manufacturing Laboratories, Inc. (MLI)

BY PROCEEDING WITH THIS INSTALL, YOU ARE AGREEING TO BECOME BOUND BY THE TERMS OF THIS AGREEMENT, WHICH INCLUDES THE SOFTWARE LICENSE, SOFTWARE DISCLAIMER OF WARRANTY, AND HARDWARE LIMITED WARRANTY (collectively, the "Agreement").

THIS AGREEMENT CONSTITUTES THE COMPLETE AGREEMENT BETWEEN YOU AND MLI IF YOU DO NOT AGREE TO THE TERMS OF THIS AGREEMENT, CLICK ON THE "NO" KEY BELOW. PROMPTLY RETURN DISK PACKAGE AND THE OTHER ITEMS (INCLUDING WRITTEN MATERIALS, BINDERS OR OTHER CONTAINERS, AND HARDWARE, IF ANY) THAT ARE PART OF THIS PRODUCT TO THE PLACE WHERE YOU OBTAINED THEM FOR A FULL REFUND.

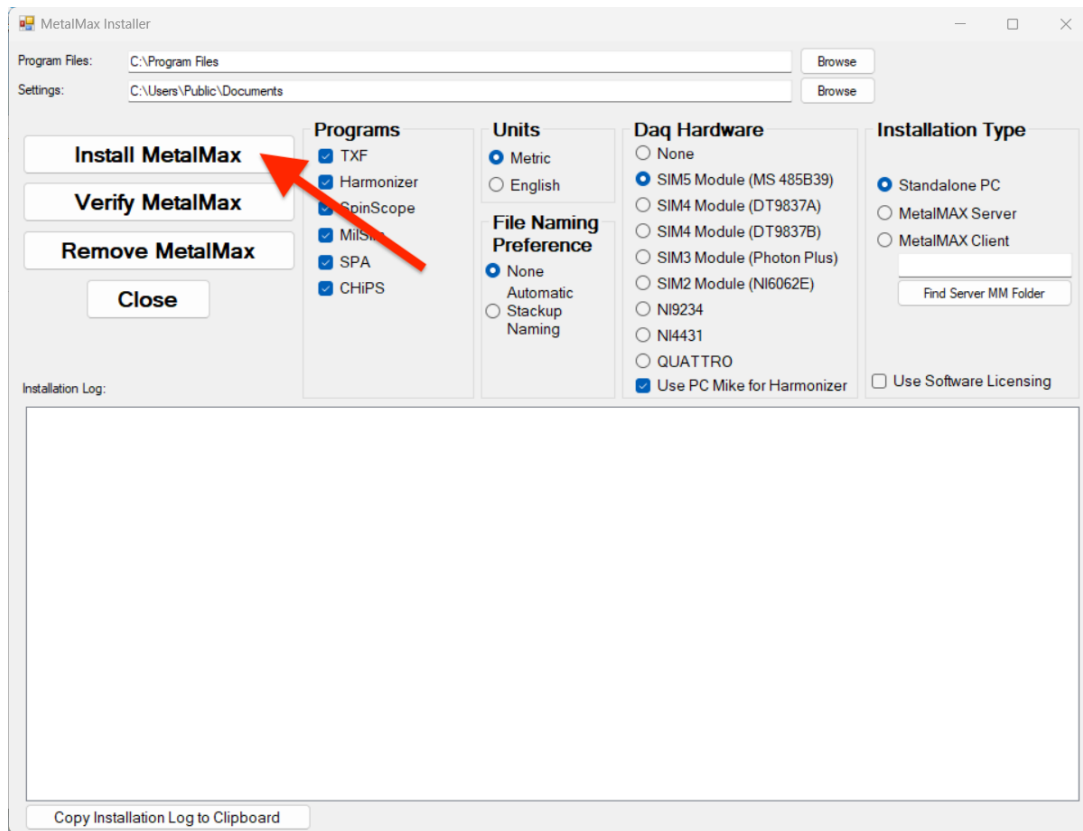
MLI SOFTWARE LICENSE

1. GRANT OF LICENSE. In consideration of payment of the LICENSE fee, which is a part of the price you paid for this product, MLI, as Licensor, grants you, the LICENSEE, a nonexclusive right to use and display this copy of a MLI software program (hereinafter called "SOFTWARE") on a single computer (i.e. with a single CPU and equipped with MLI supplied hardware dongle) at a single location, MLI reserves all rights not expressly granted to LICENSEE.
2. VIEW ONLY SITE LICENSE: Under the terms of a View Only Site License, you may distribute and install an unlimited number of copies of the Viewer Software (or non-dongled software) within one specified Site in your organization. An unlimited number of users may access the Software simultaneously within the specified Site.

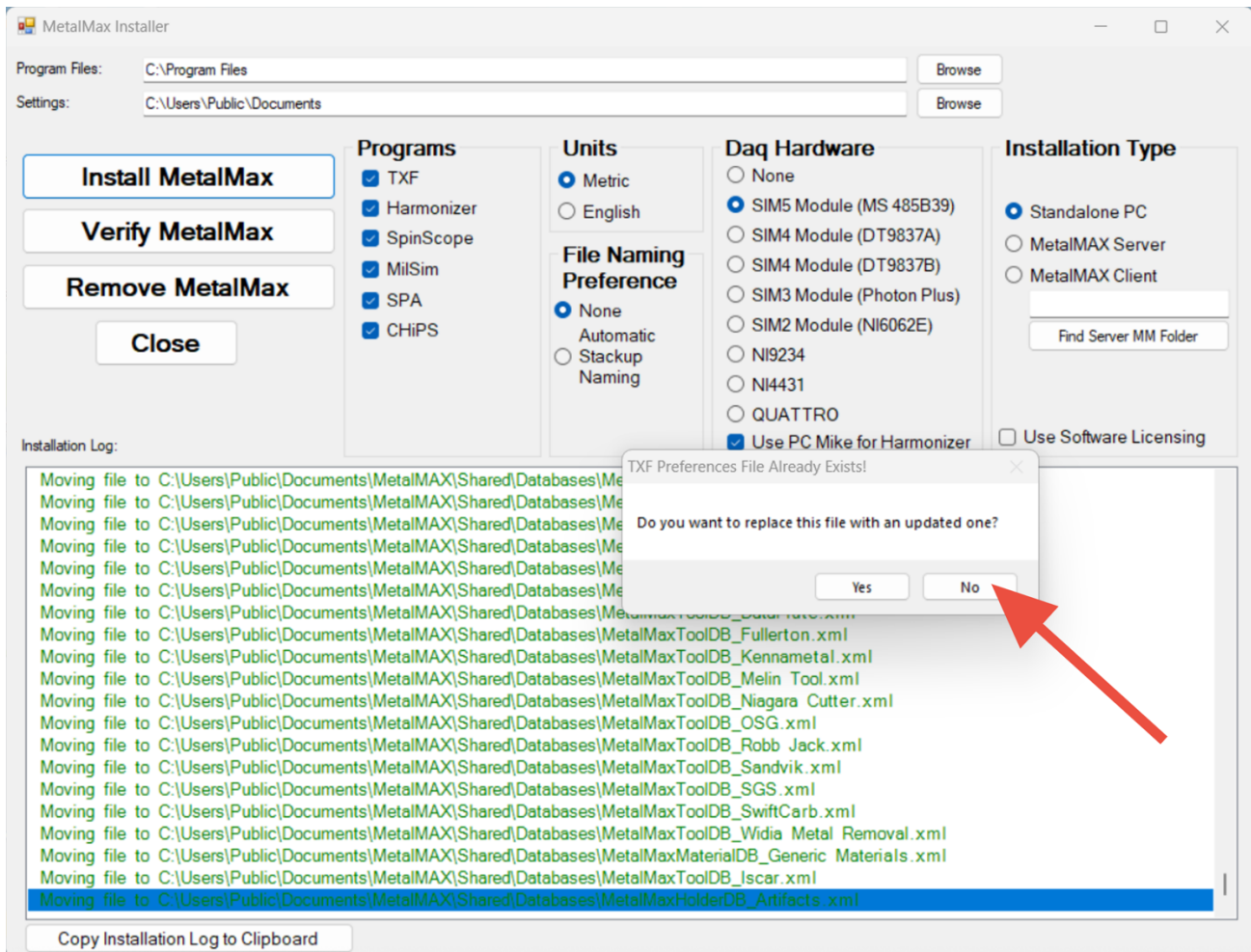
I Accept

I Decline

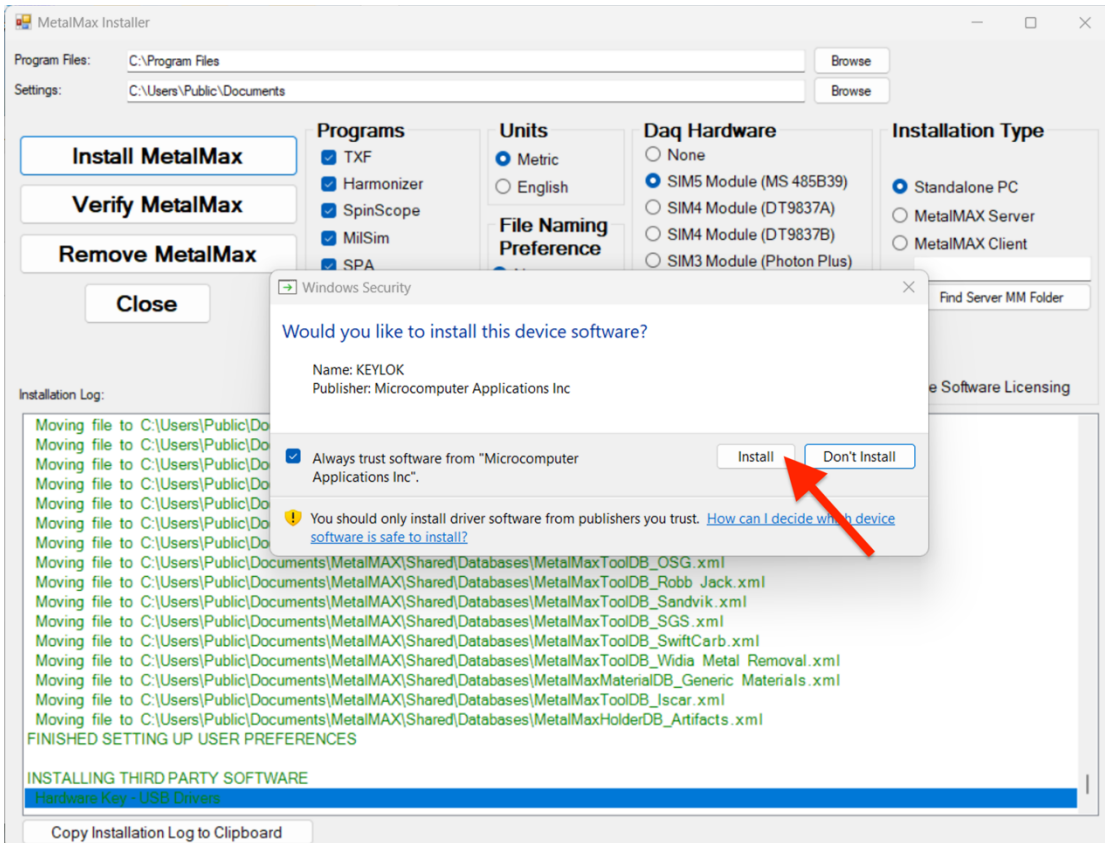
Click **"I ACCEPT"**



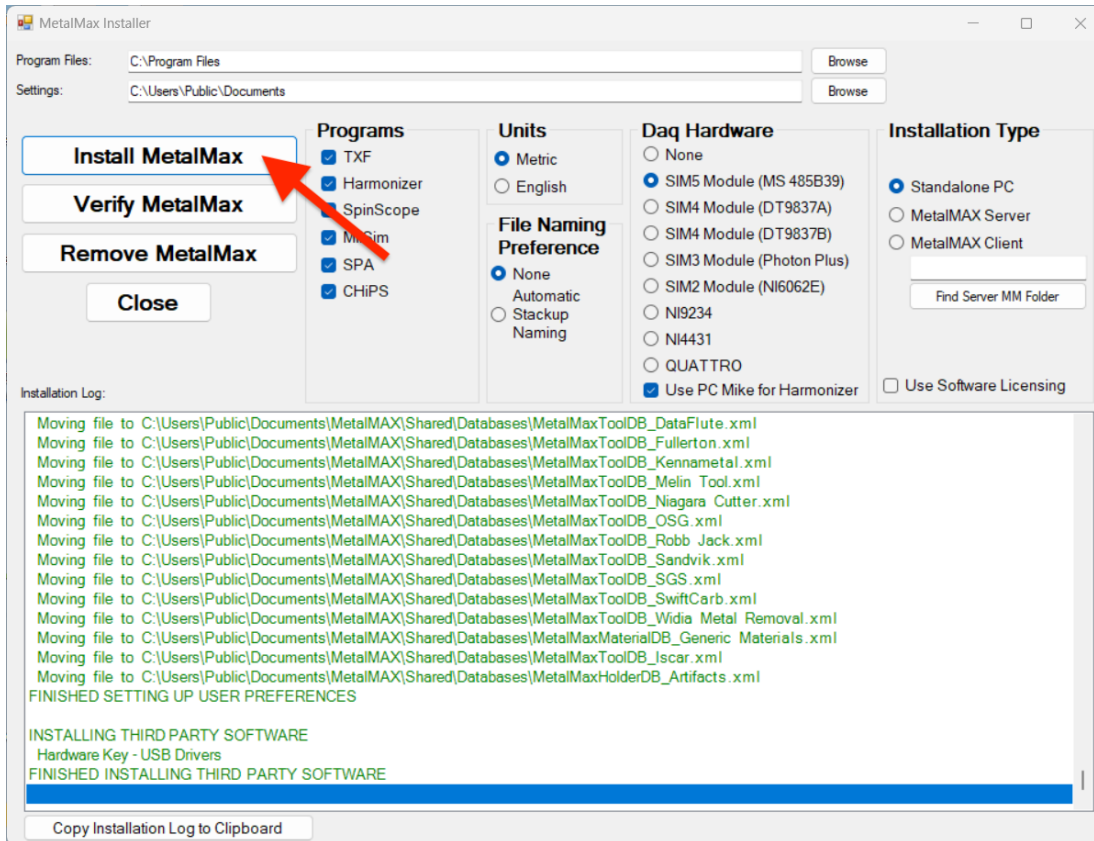
STEP 7: Click "Install MetalMax" button.



If you get this messages, click **NO**.



If you get this messages, click **INSTALL**.



STEP 9: Click "Close" button. Delete the MetalMax install zip file and folder from desktop.

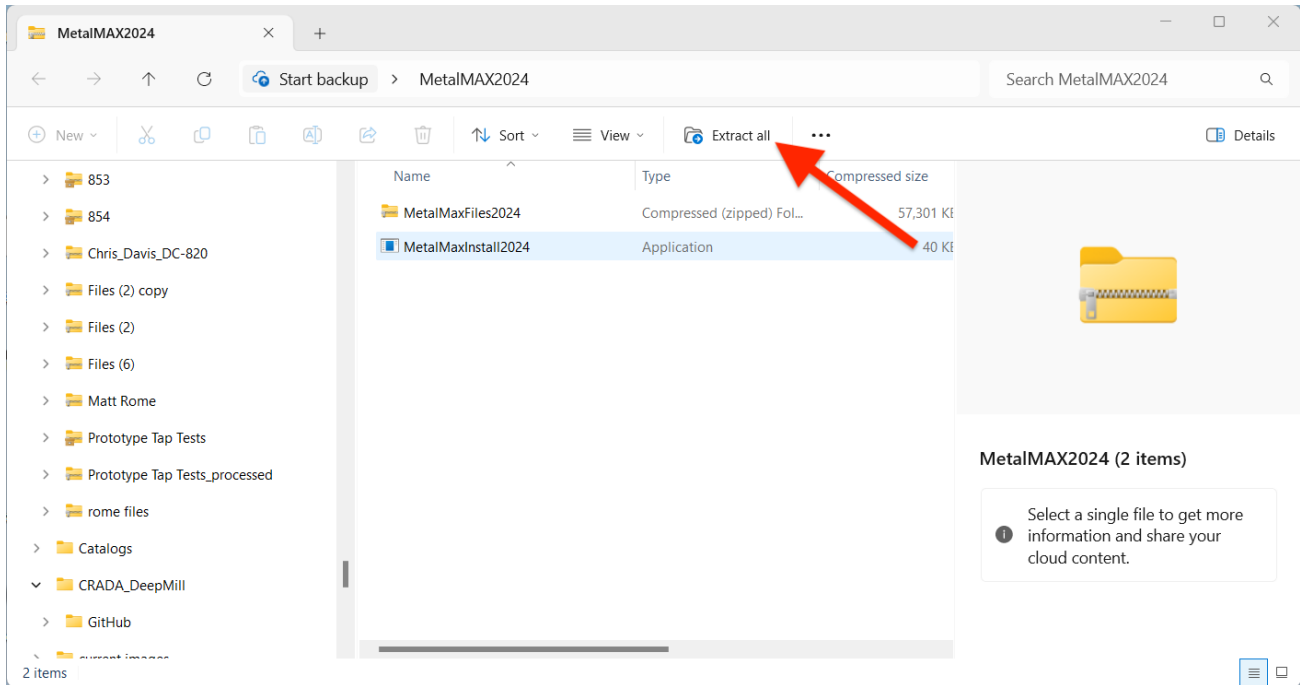
METALMAX TXF ソフトウェアインストール手順書

zipファイルをデスクトップにダウンロードしてください。

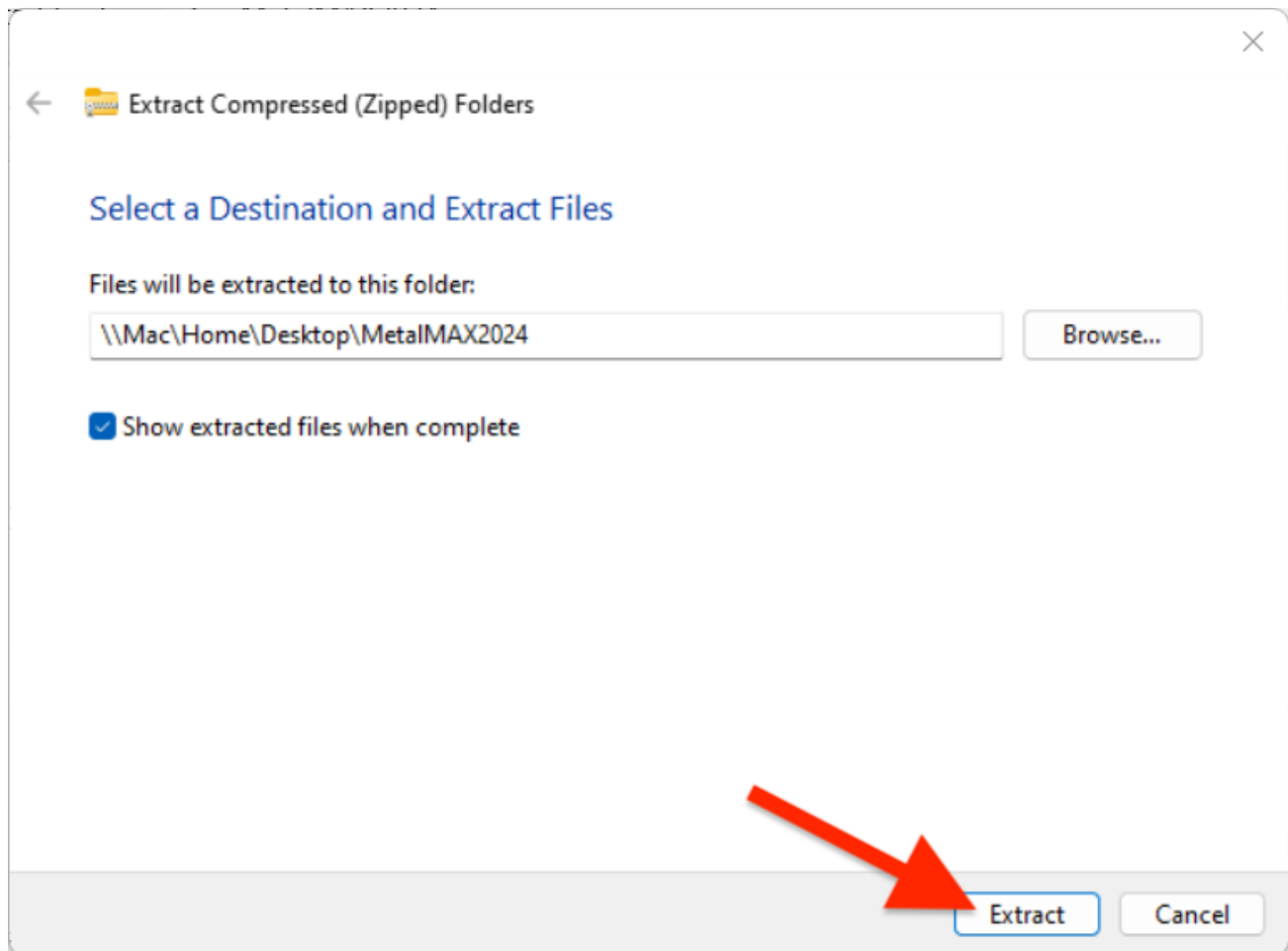


ステップ1: SpeedCastインストール用zipファイルをクリックしてください。

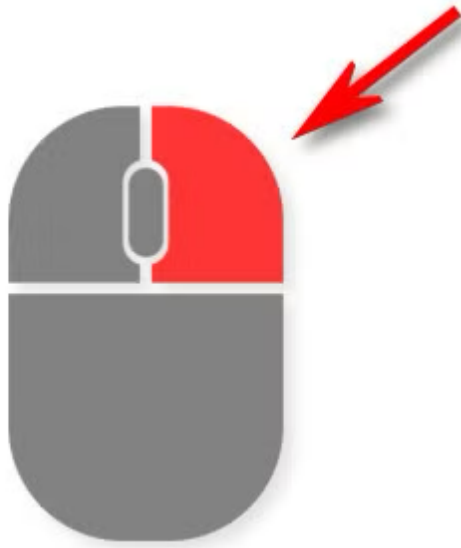
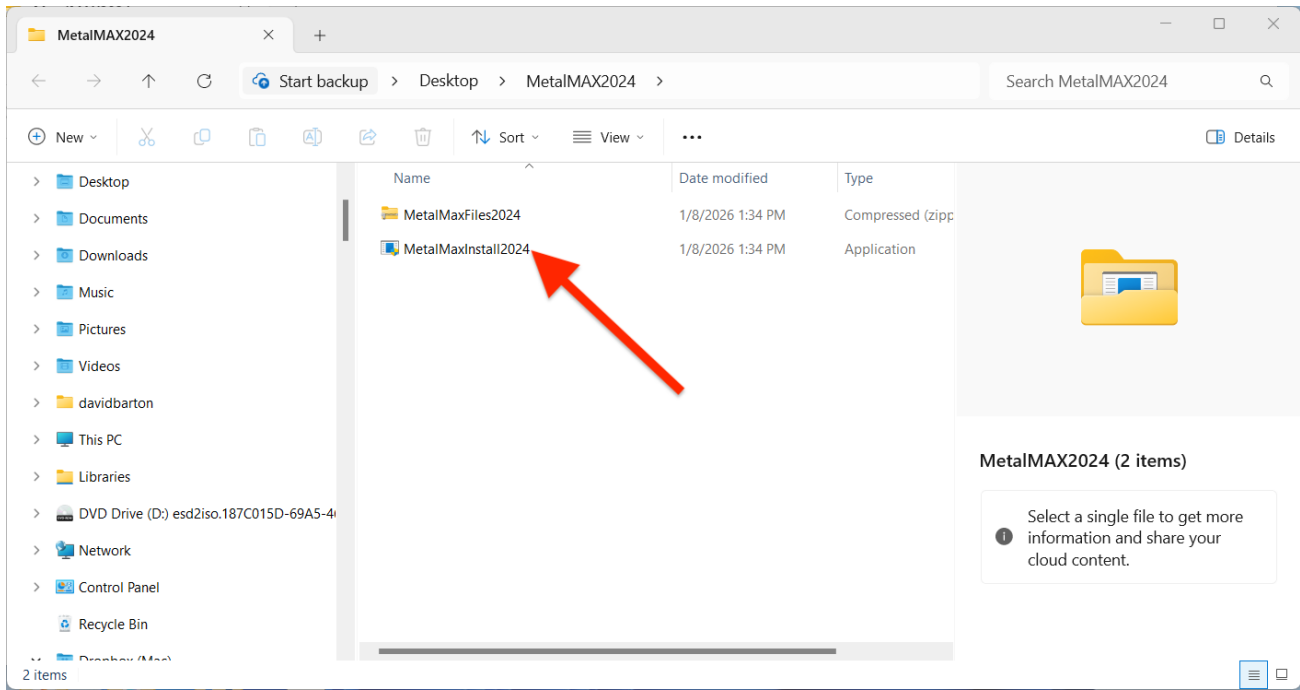
注記 : TXFはSpeedCastと同じコンピュータにインストールでき、同じデータベースとファイルを共有できます。ただし、TXFはSpeedCastのタップテストファイルを読み取れません。



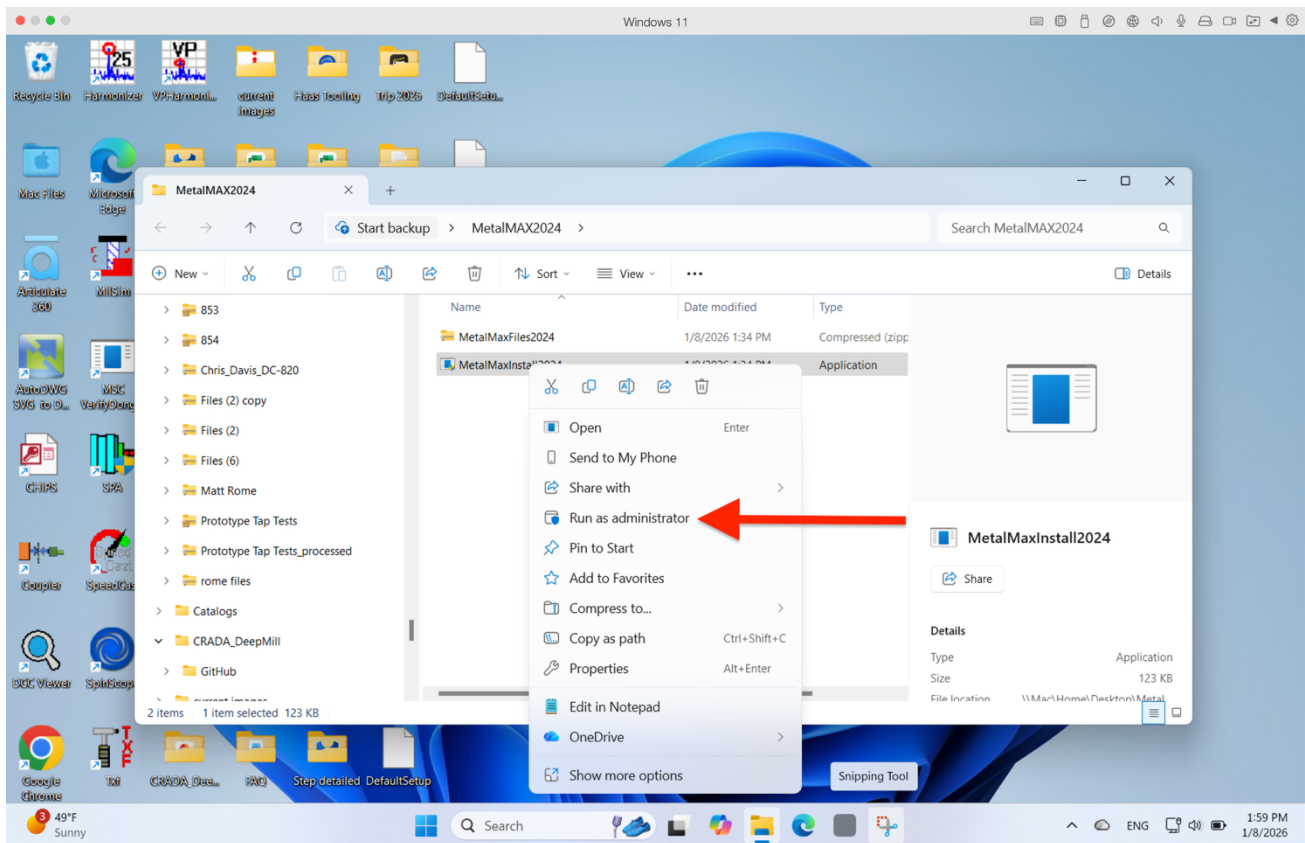
ステップ2: 「すべて抽出」をクリック



ステップ3: デフォルトの保存先を使用します。「抽出」ボタンをクリックしてください



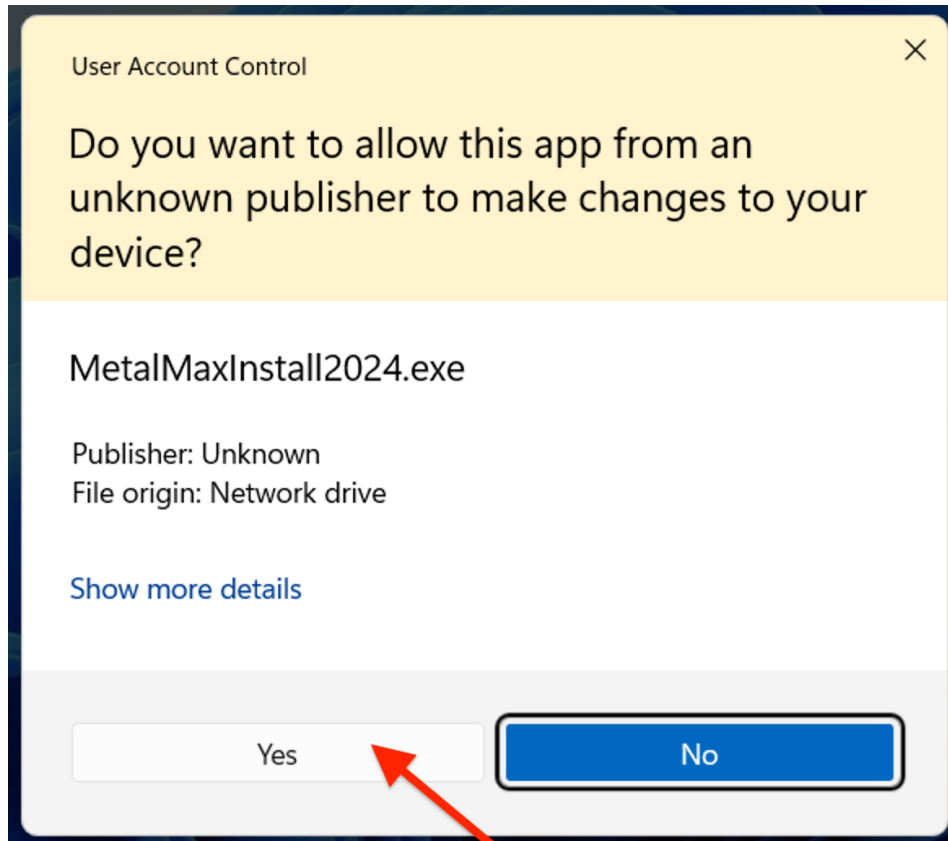
ステップ4: 「MetalMaxInstall2026.exe」を右クリックします。



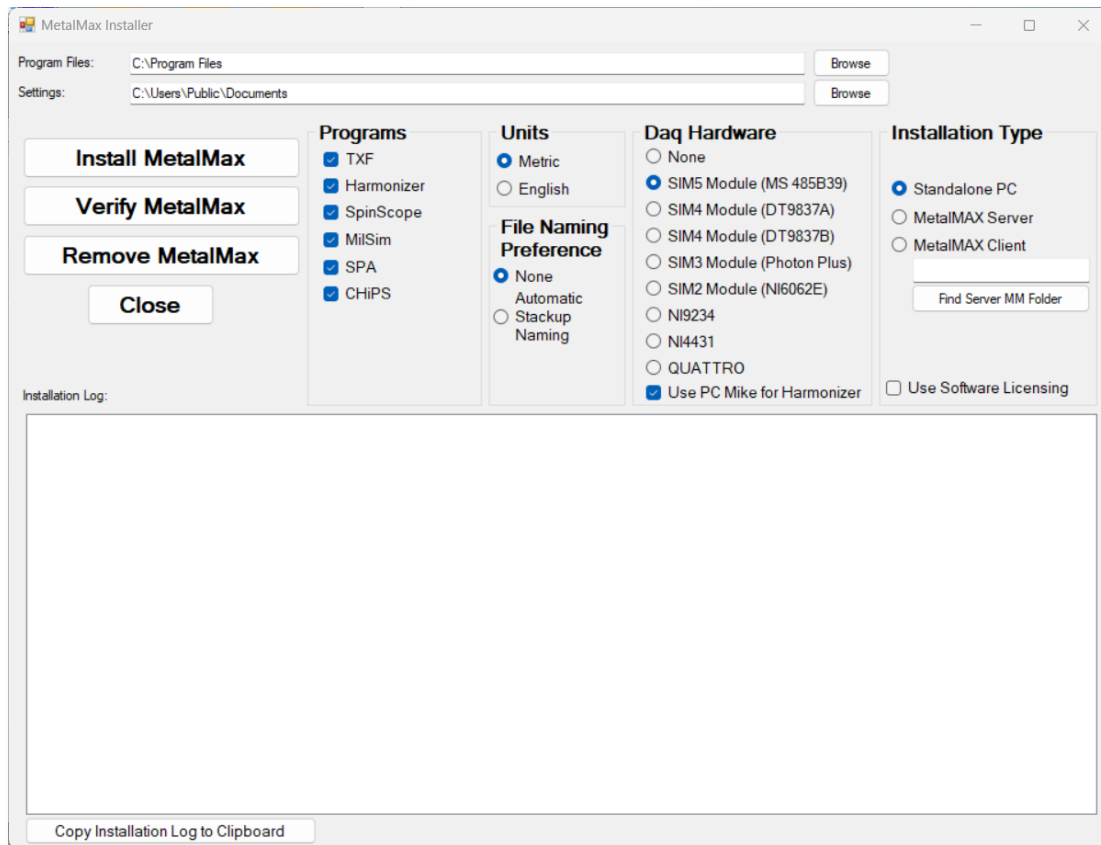
「管理者として実行」をクリックしてください

MetalMaxファイルを解凍しないでください!





ステップ5: 警告が表示されたら「はい」をクリックしてください。



ステップ6：これらがデフォルト設定であることを確認してください。

MLI License Agreement

This legal document is an agreement between you, the end user, and Manufacturing Laboratories, Inc. (MLI)

BY PROCEEDING WITH THIS INSTALL, YOU ARE AGREEING TO BECOME BOUND BY THE TERMS OF THIS AGREEMENT, WHICH INCLUDES THE SOFTWARE LICENSE, SOFTWARE DISCLAIMER OF WARRANTY, AND HARDWARE LIMITED WARRANTY (collectively, the "Agreement").

THIS AGREEMENT CONSTITUTES THE COMPLETE AGREEMENT BETWEEN YOU AND MLI IF YOU DO NOT AGREE TO THE TERMS OF THIS AGREEMENT, CLICK ON THE "NO" KEY BELOW. PROMPTLY RETURN DISK PACKAGE AND THE OTHER ITEMS (INCLUDING WRITTEN MATERIALS, BINDERS OR OTHER CONTAINERS, AND HARDWARE, IF ANY) THAT ARE PART OF THIS PRODUCT TO THE PLACE WHERE YOU OBTAINED THEM FOR A FULL REFUND.

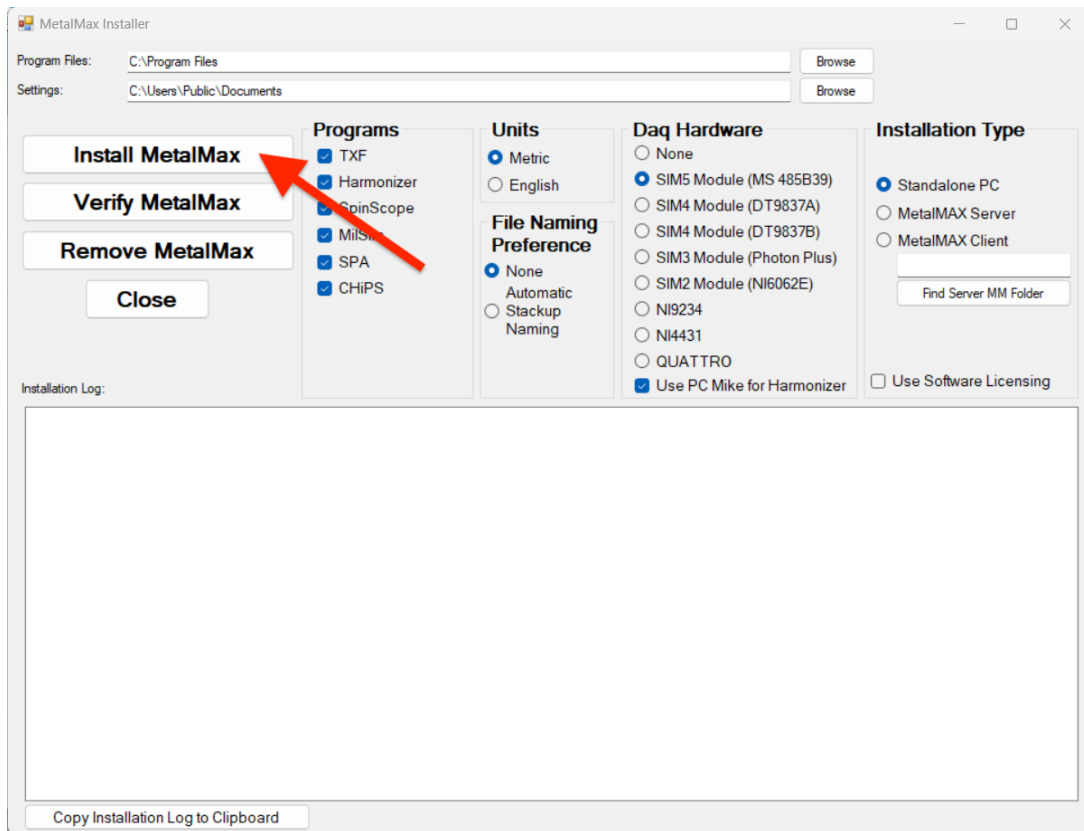
MLI SOFTWARE LICENSE

1. GRANT OF LICENSE. In consideration of payment of the LICENSE fee, which is a part of the price you paid for this product, MLI, as Licensor, grants you, the LICENSEE, a nonexclusive right to use and display this copy of a MLI software program (hereinafter called "SOFTWARE") on a single computer (i.e. with a single CPU and equipped with MLI supplied hardware dongle) at a single location, MLI reserves all rights not expressly granted to LICENSEE.
2. VIEW ONLY SITE LICENSE: Under the terms of a View Only Site License, you may distribute and install an unlimited number of copies of the Viewer Software (or non-dongled software) within one specified Site in your organization. An unlimited number of users may access the Software simultaneously within the specified Site.

I Accept

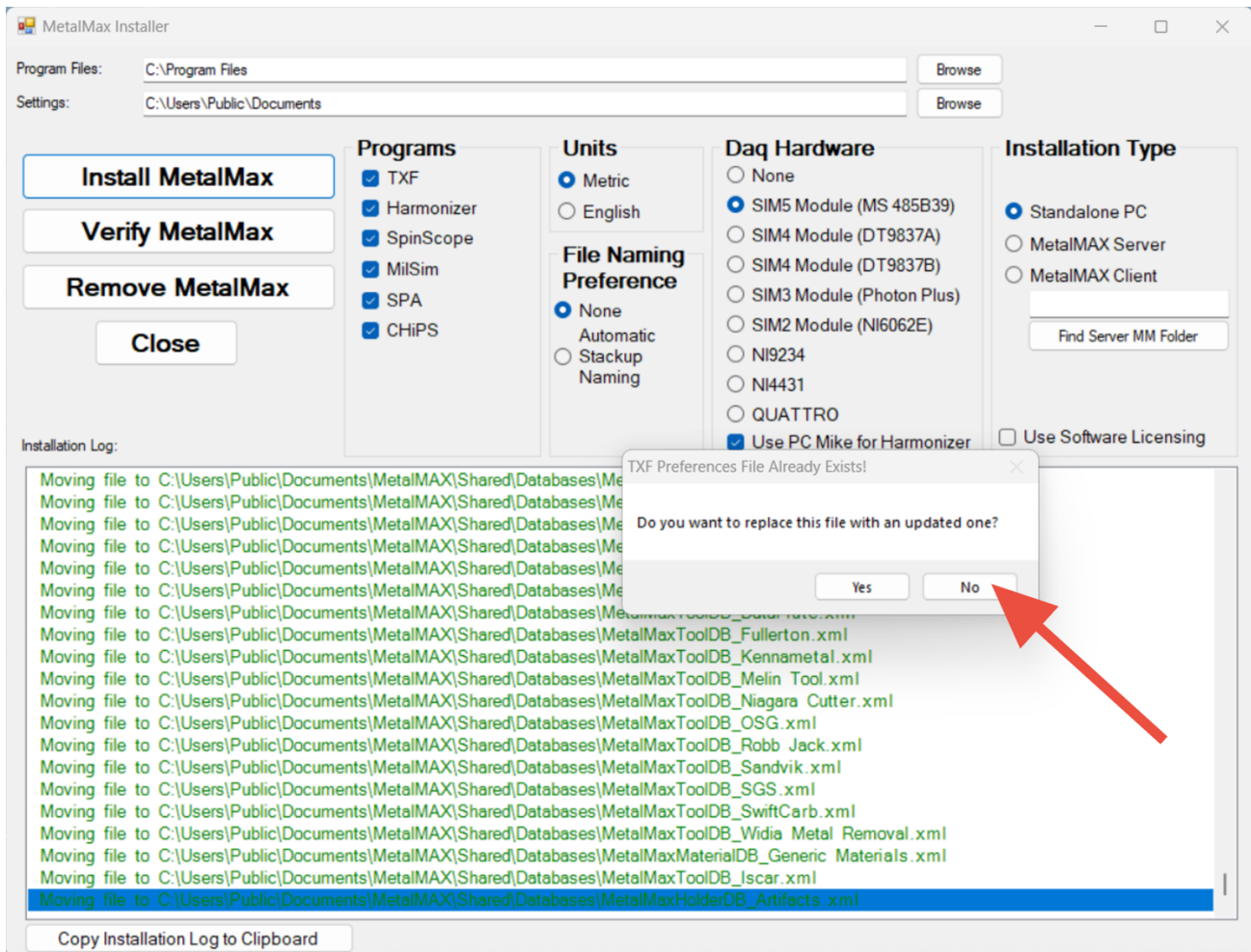
I Decline

「同意する」をクリックしてください

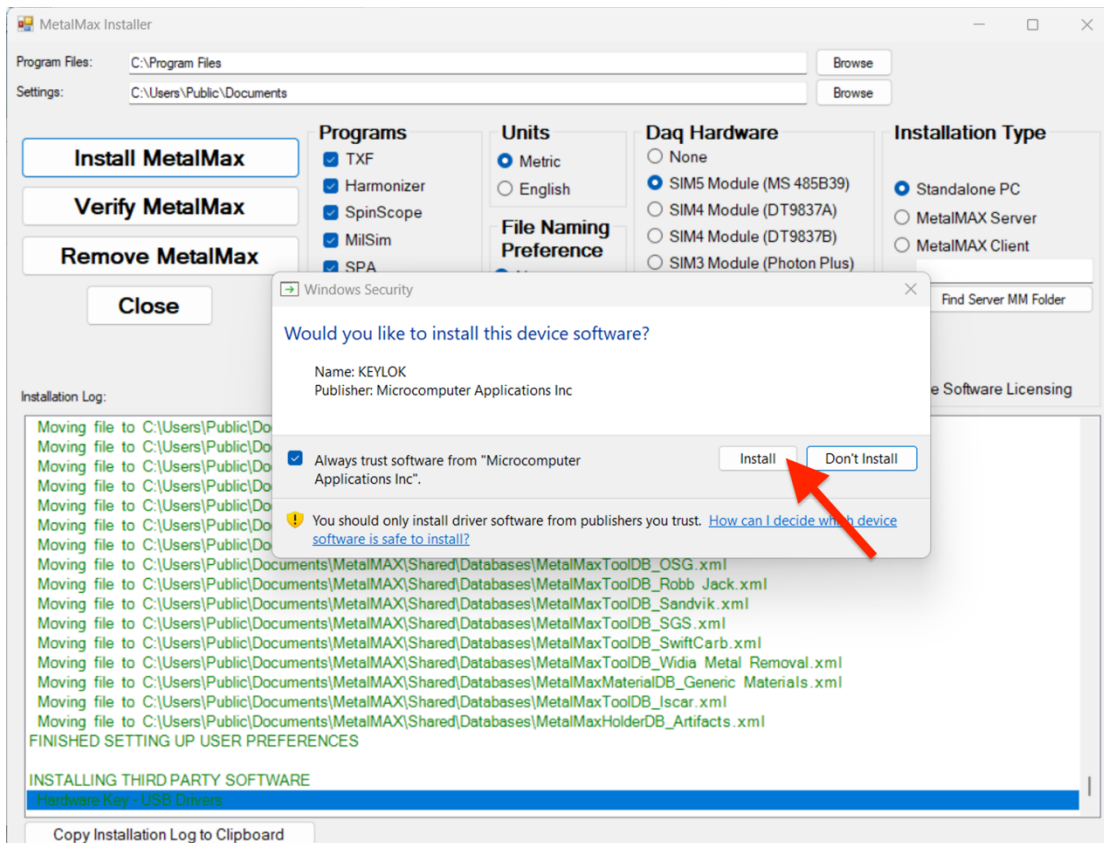


ステップ7: 「MetalMaxをインストール」 ボタンをクリックします

○

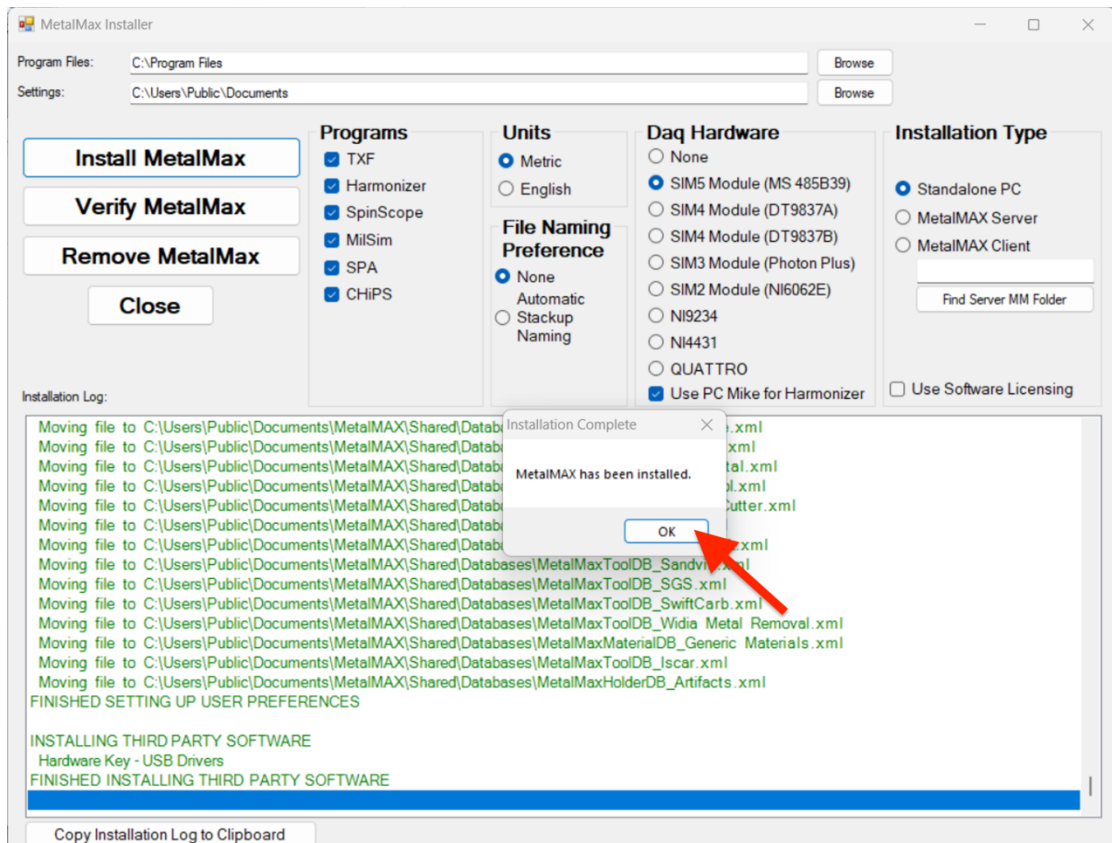


このメッセージが表示された場合は、[いいえ]をクリックしてください。

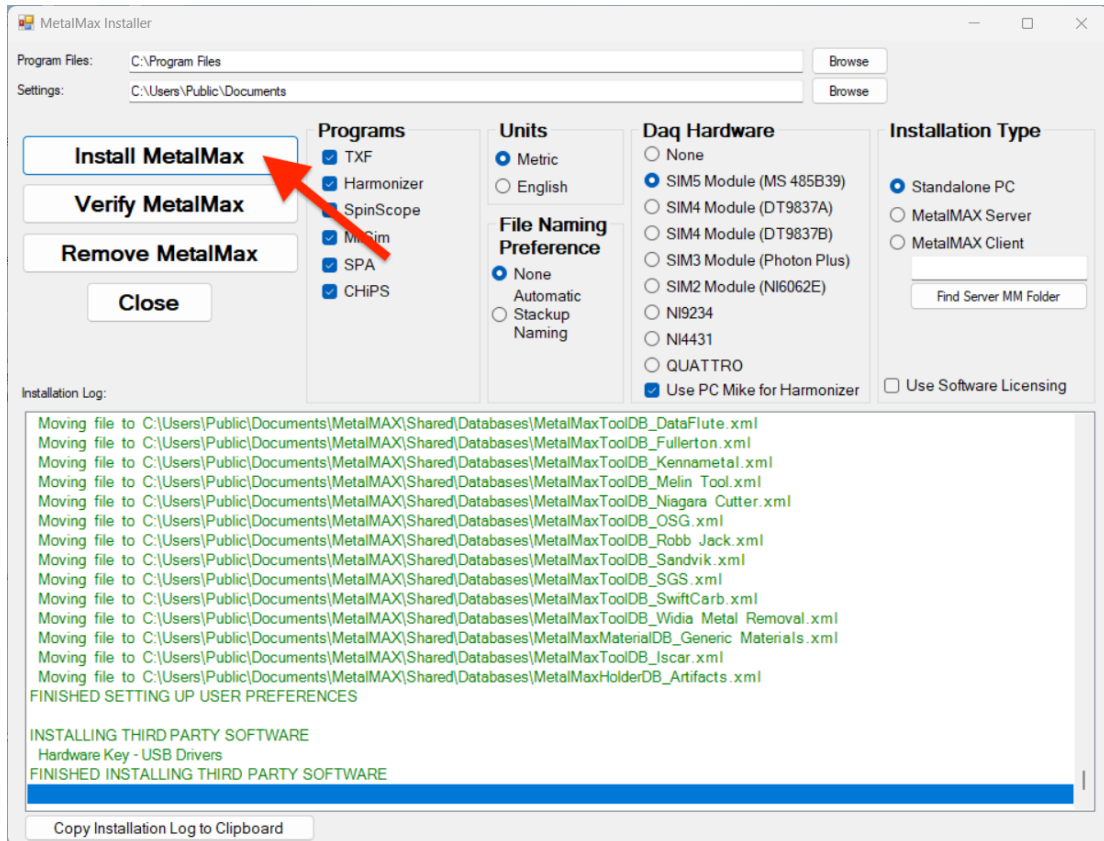


このメッセージが表示されたら、[INSTALL]をクリックしてください

○



ステップ8: インストールが完了するまで待ちます。「OK」ボタンをクリックします。



ステップ9: 「閉じる」 ボタンをクリックします。デスクトップ上の MetalMaxインストール用zipファイルとフォルダを削除します。

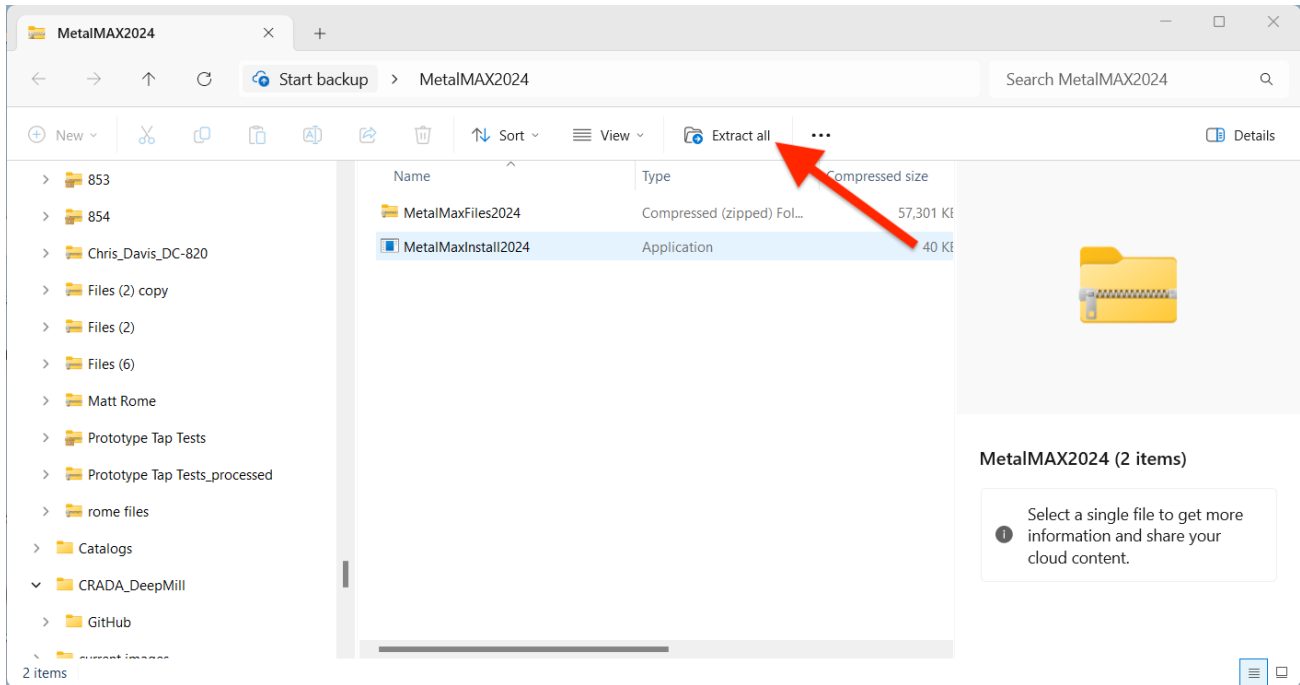
METALMAX TXF SOFTWARE-INSTALLATIONSANLEITUNG

Laden Sie die ZIP-Datei auf Ihren Desktop herunter.

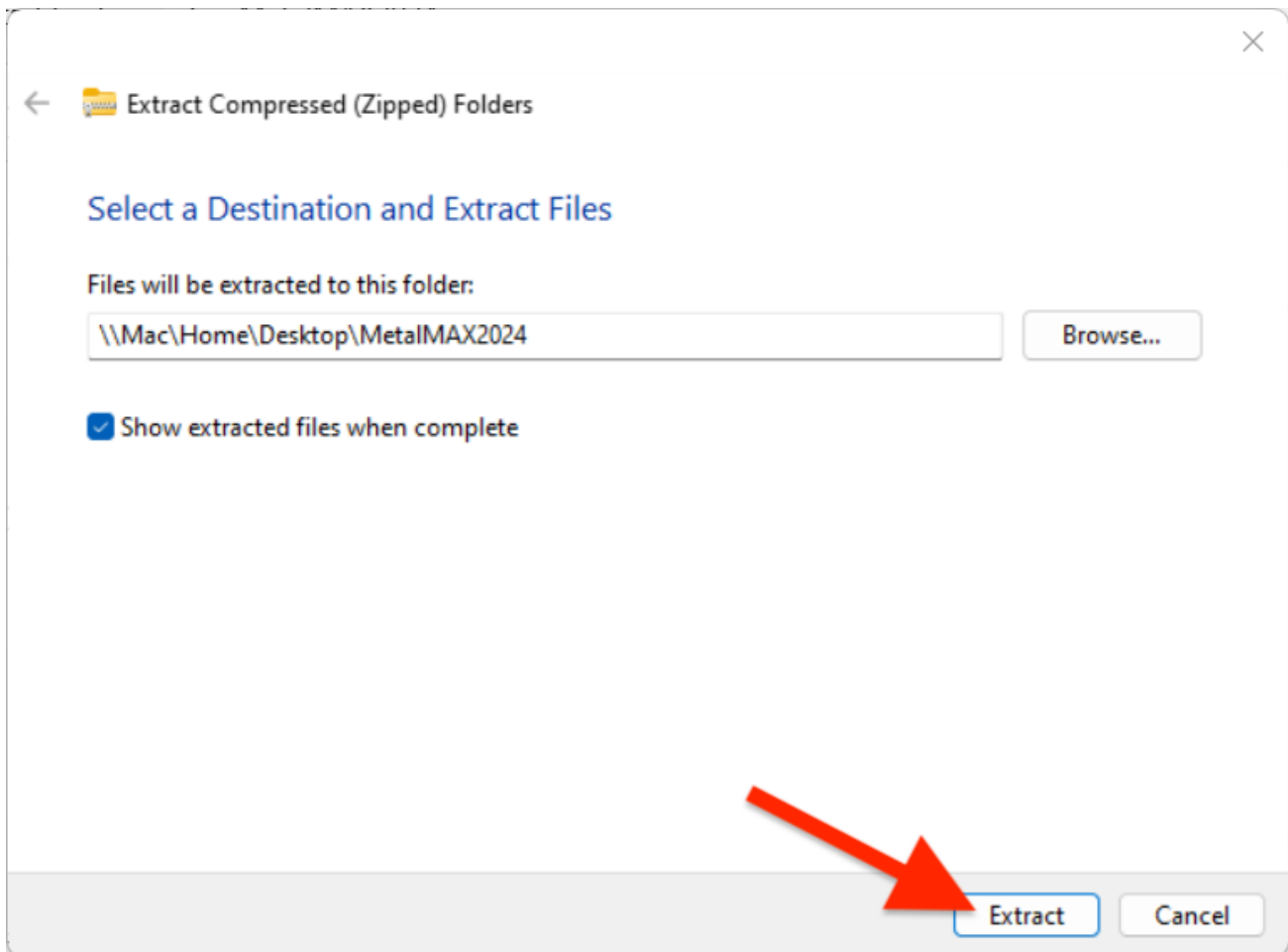


SCHRITT 1: Klicken Sie auf die ZIP-Datei „SpeedCast installieren“.

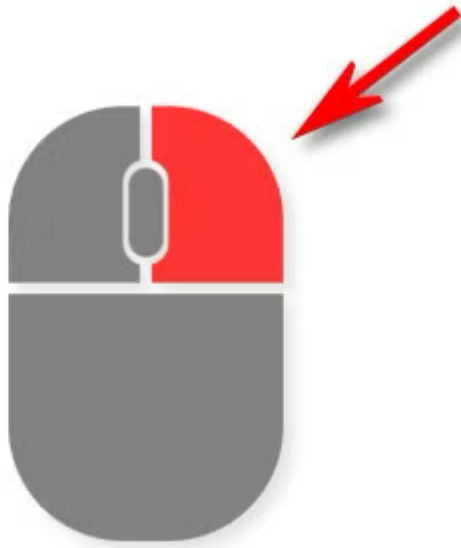
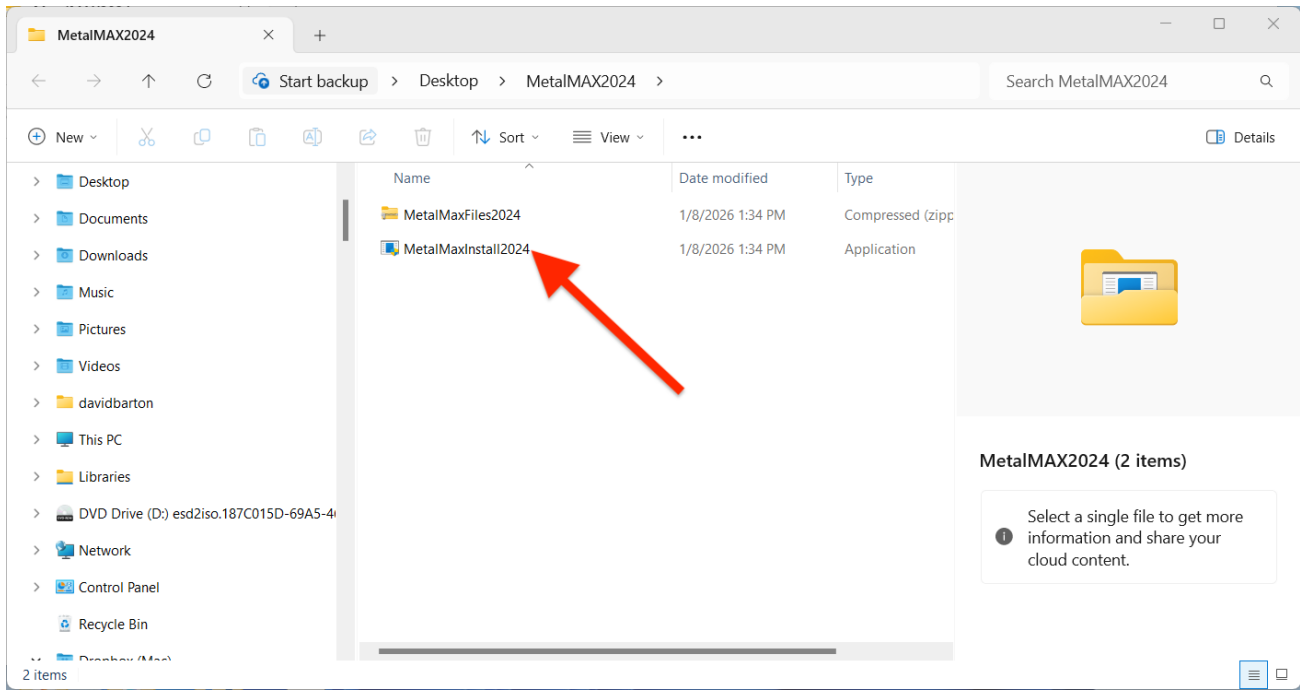
HINWEIS: Sie können TXF auf demselben Computer wie SpeedCast installieren und dieselben Datenbanken und Dateien gemeinsam nutzen. TXF kann keine SpeedCast-Tap-Testdateien lesen.



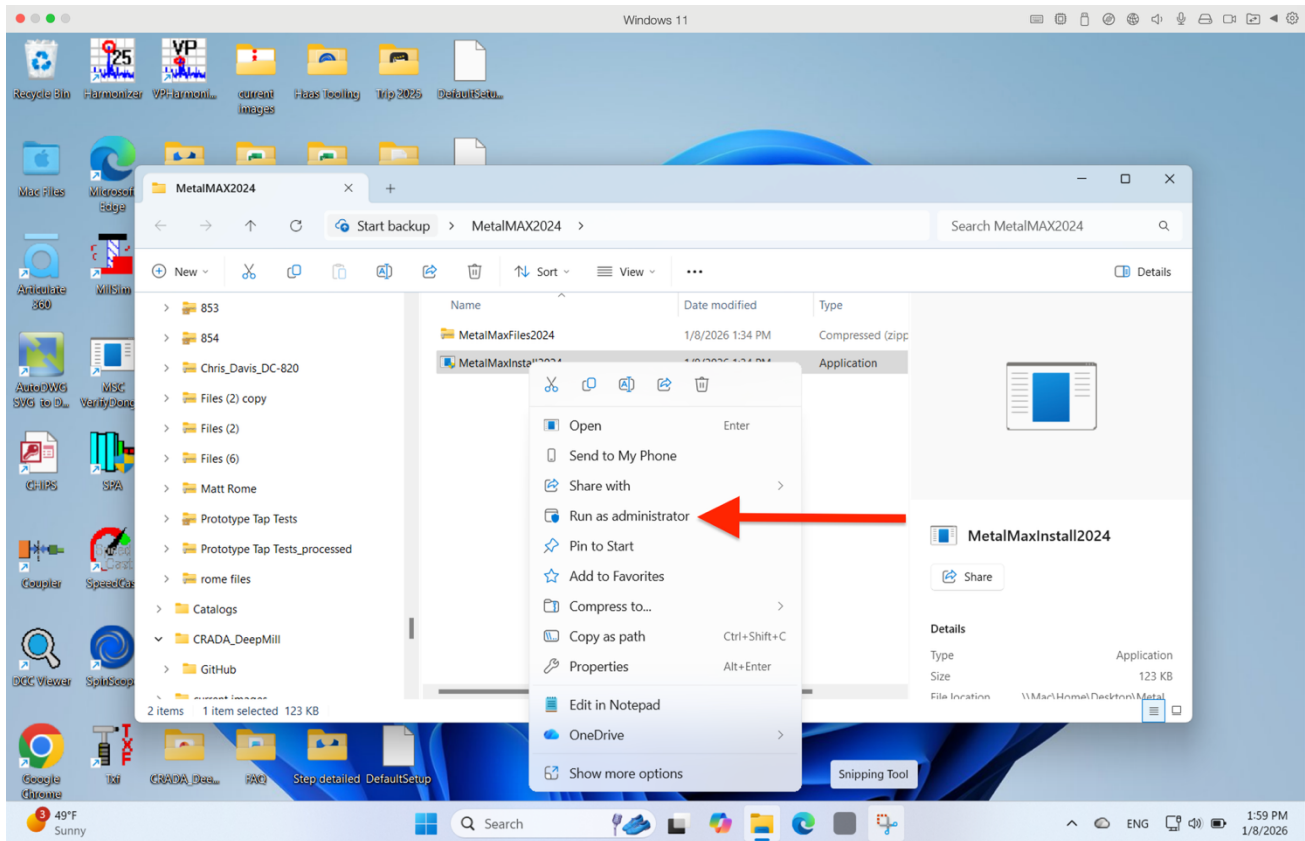
SCHRITT 2: Klicken Sie auf „Alle extrahieren“.



SCHRITT 3: Standardziel verwenden. Klicken Sie auf die Schaltfläche „Extrahieren“.

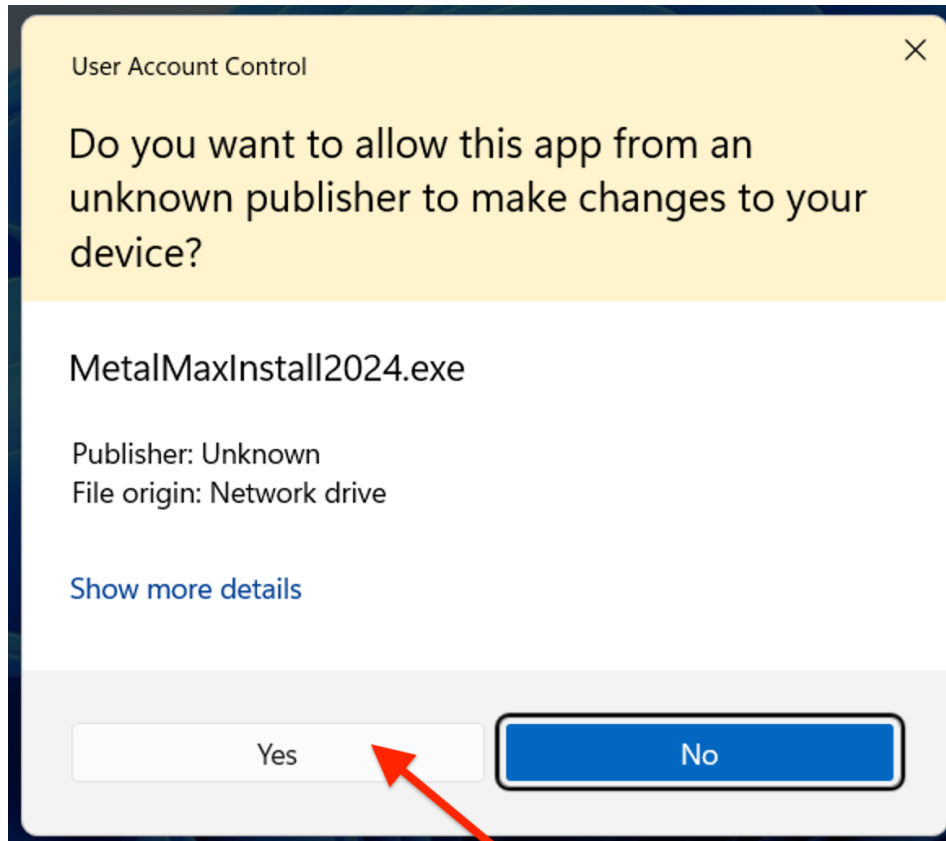


SCHRITT 4: Klicken Sie mit der rechten Maustaste auf „MetalMaxInstall2026.exe“.

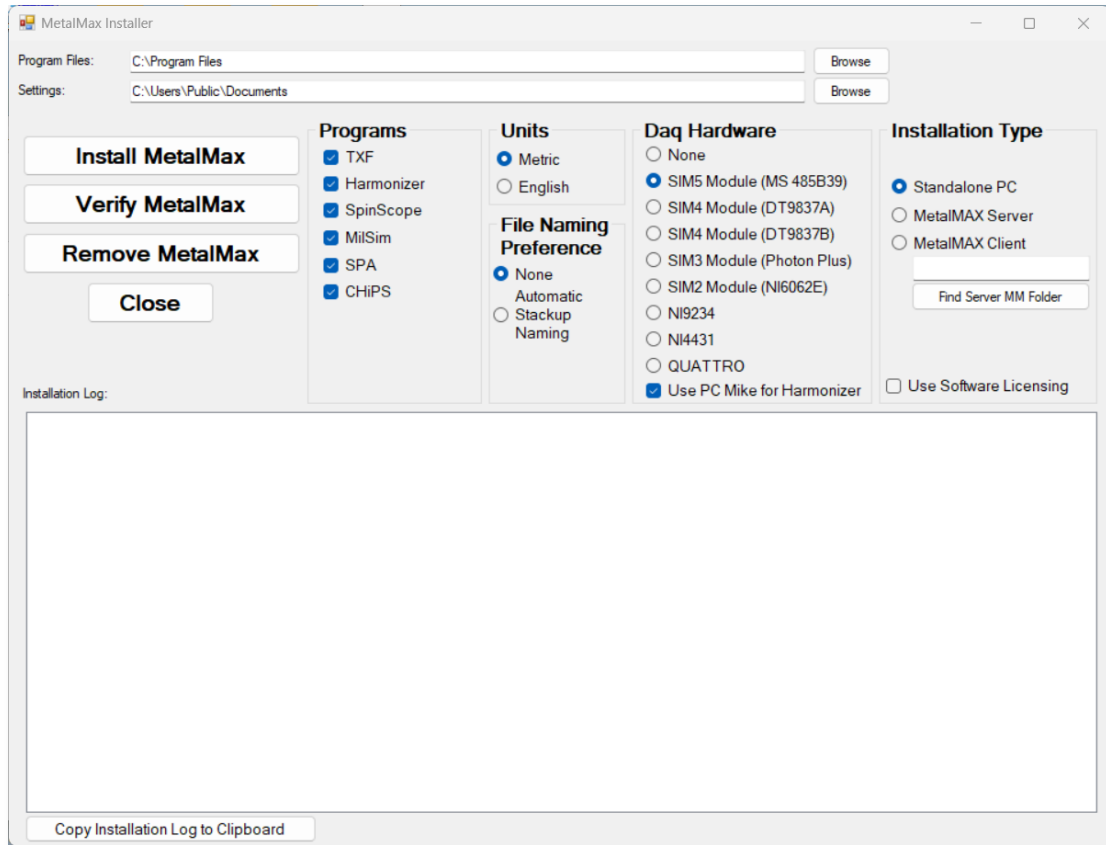


Klicken Sie auf „Als Administrator ausführen“.

Entpacken Sie die MetalMax-Dateien nicht!



SCHRITT 5: Wenn eine Warnung erscheint, klicken Sie auf „Ja“.



SCHRITT 6: Überprüfen Sie, ob dies die Standardeinstellungen sind.

MLI License Agreement

This legal document is an agreement between you, the end user, and Manufacturing Laboratories, Inc. (MLI)

BY PROCEEDING WITH THIS INSTALL, YOU ARE AGREEING TO BECOME BOUND BY THE TERMS OF THIS AGREEMENT, WHICH INCLUDES THE SOFTWARE LICENSE, SOFTWARE DISCLAIMER OF WARRANTY, AND HARDWARE LIMITED WARRANTY (collectively, the "Agreement").

THIS AGREEMENT CONSTITUTES THE COMPLETE AGREEMENT BETWEEN YOU AND MLI IF YOU DO NOT AGREE TO THE TERMS OF THIS AGREEMENT, CLICK ON THE "NO" KEY BELOW. PROMPTLY RETURN DISK PACKAGE AND THE OTHER ITEMS (INCLUDING WRITTEN MATERIALS, BINDERS OR OTHER CONTAINERS, AND HARDWARE, IF ANY) THAT ARE PART OF THIS PRODUCT TO THE PLACE WHERE YOU OBTAINED THEM FOR A FULL REFUND.

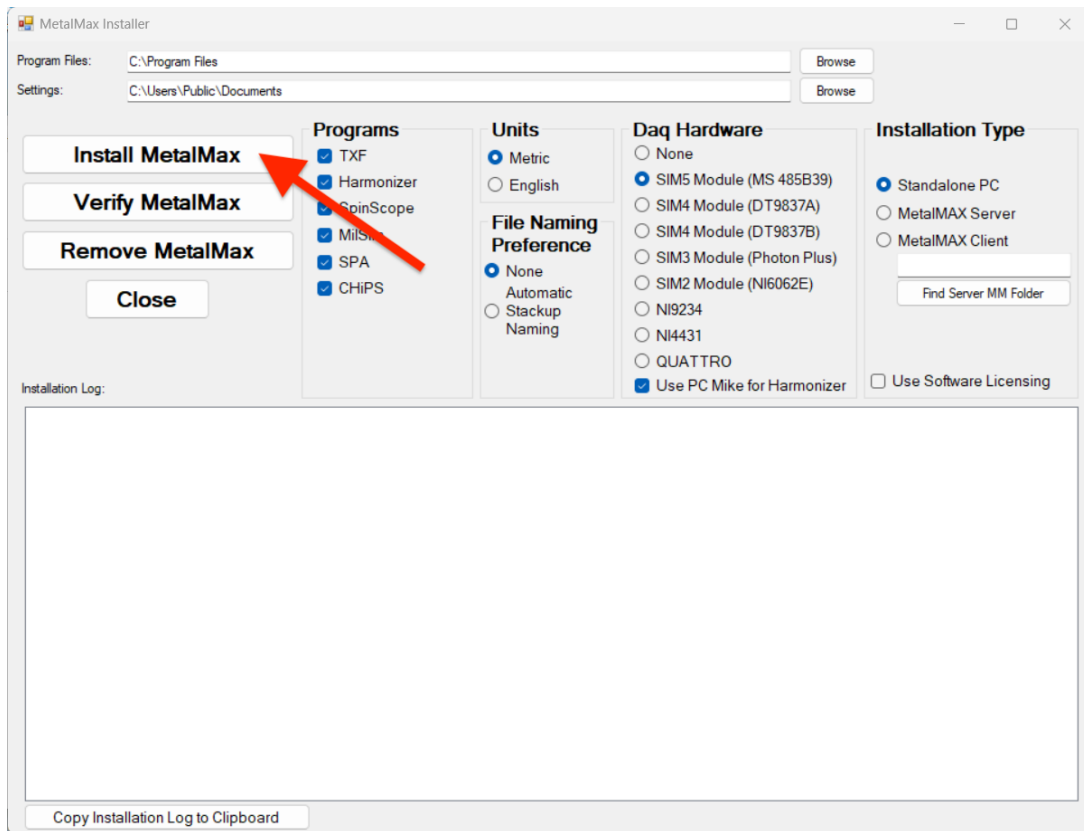
MLI SOFTWARE LICENSE

1. GRANT OF LICENSE. In consideration of payment of the LICENSE fee, which is a part of the price you paid for this product, MLI, as Licensor, grants you, the LICENSEE, a nonexclusive right to use and display this copy of a MLI software program (hereinafter called "SOFTWARE") on a single computer (i.e. with a single CPU and equipped with MLI supplied hardware dongle) at a single location, MLI reserves all rights not expressly granted to LICENSEE.
2. VIEW ONLY SITE LICENSE: Under the terms of a View Only Site License, you may distribute and install an unlimited number of copies of the Viewer Software (or non-dongled software) within one specified Site in your organization. An unlimited number of users may access the Software simultaneously within the specified Site.

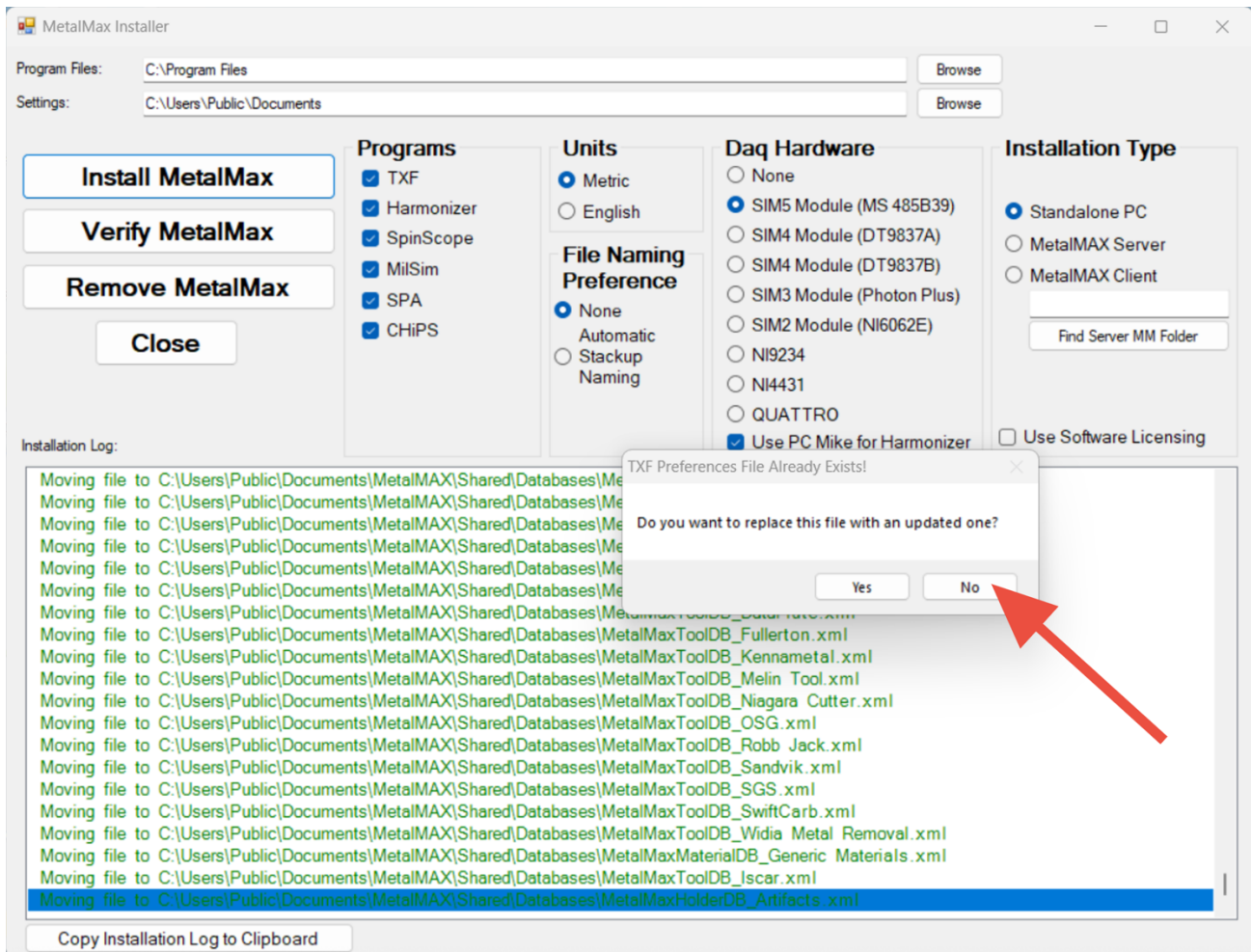
I Accept

I Decline

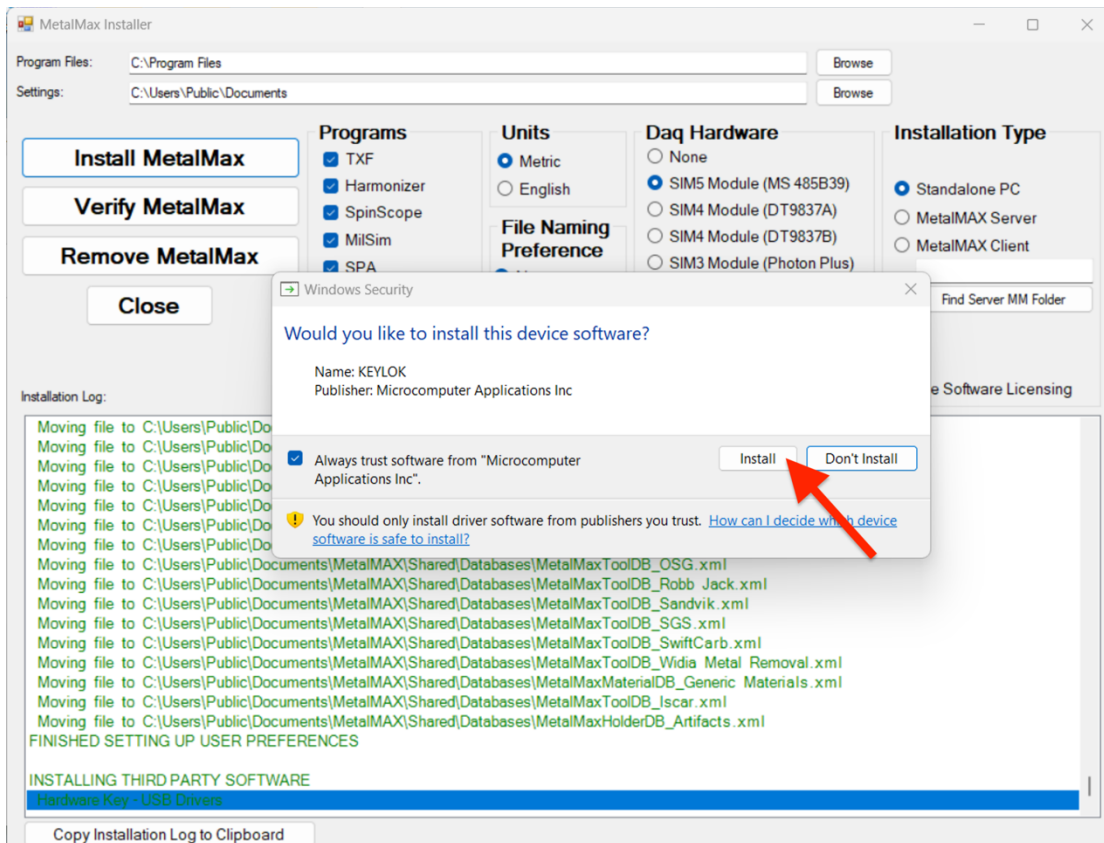
Klicken Sie auf „Ich akzeptiere“.



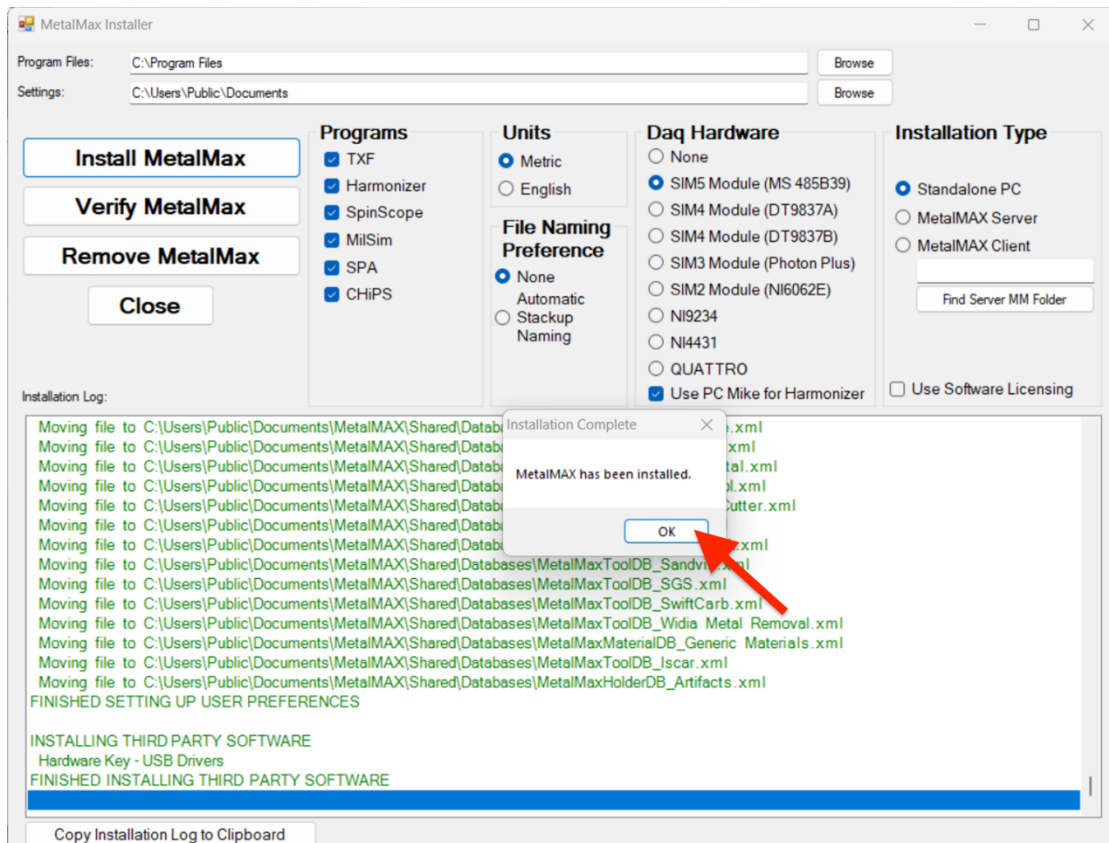
SCHRITT 7: Klicken Sie auf die Schaltfläche „MetalMax installieren“.



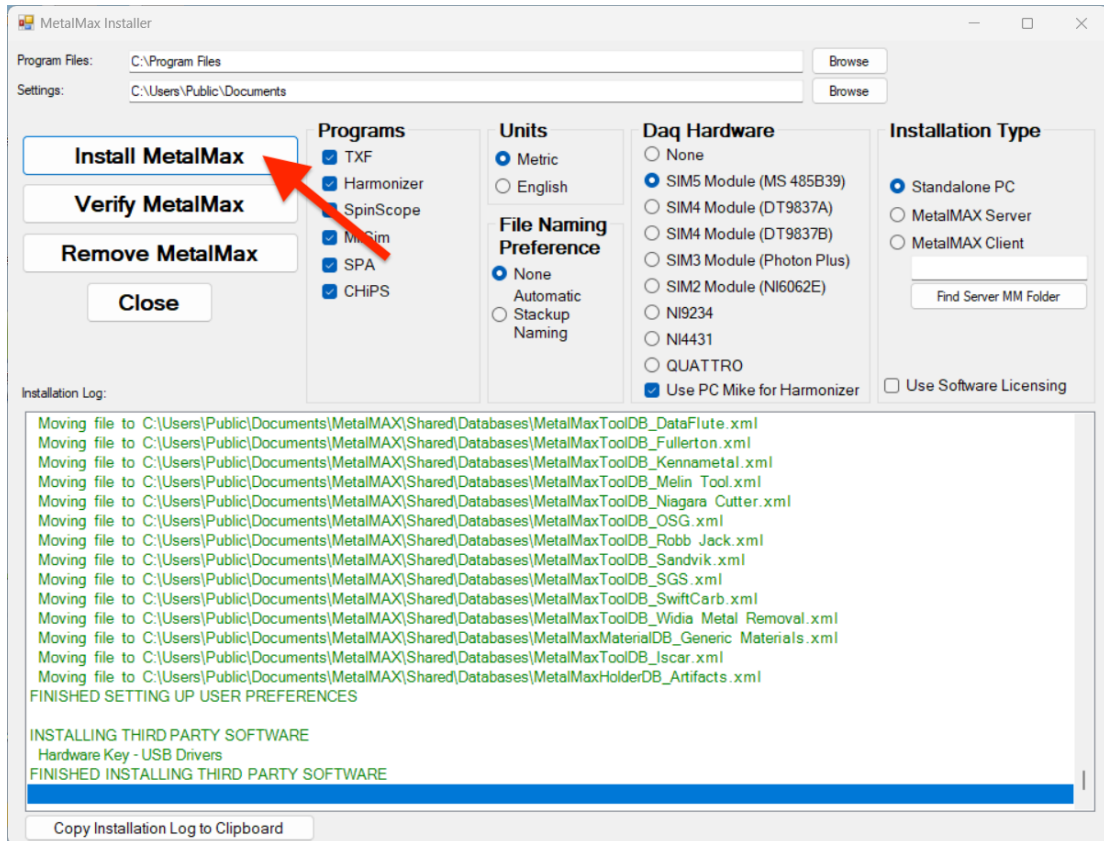
Wenn Sie diese Meldung erhalten, klicken Sie auf NEIN.



Wenn Sie diese Meldung erhalten, klicken Sie auf INSTALLIEREN.



SCHRITT 8: Warten Sie, bis die Installation abgeschlossen ist. Klicken Sie auf die Schaltfläche „OK“.



SCHRITT 9: Klicken Sie auf die Schaltfläche „Schließen“. Löschen Sie die MetalMax-Installations-ZIP-Datei und den Ordner vom Desktop.