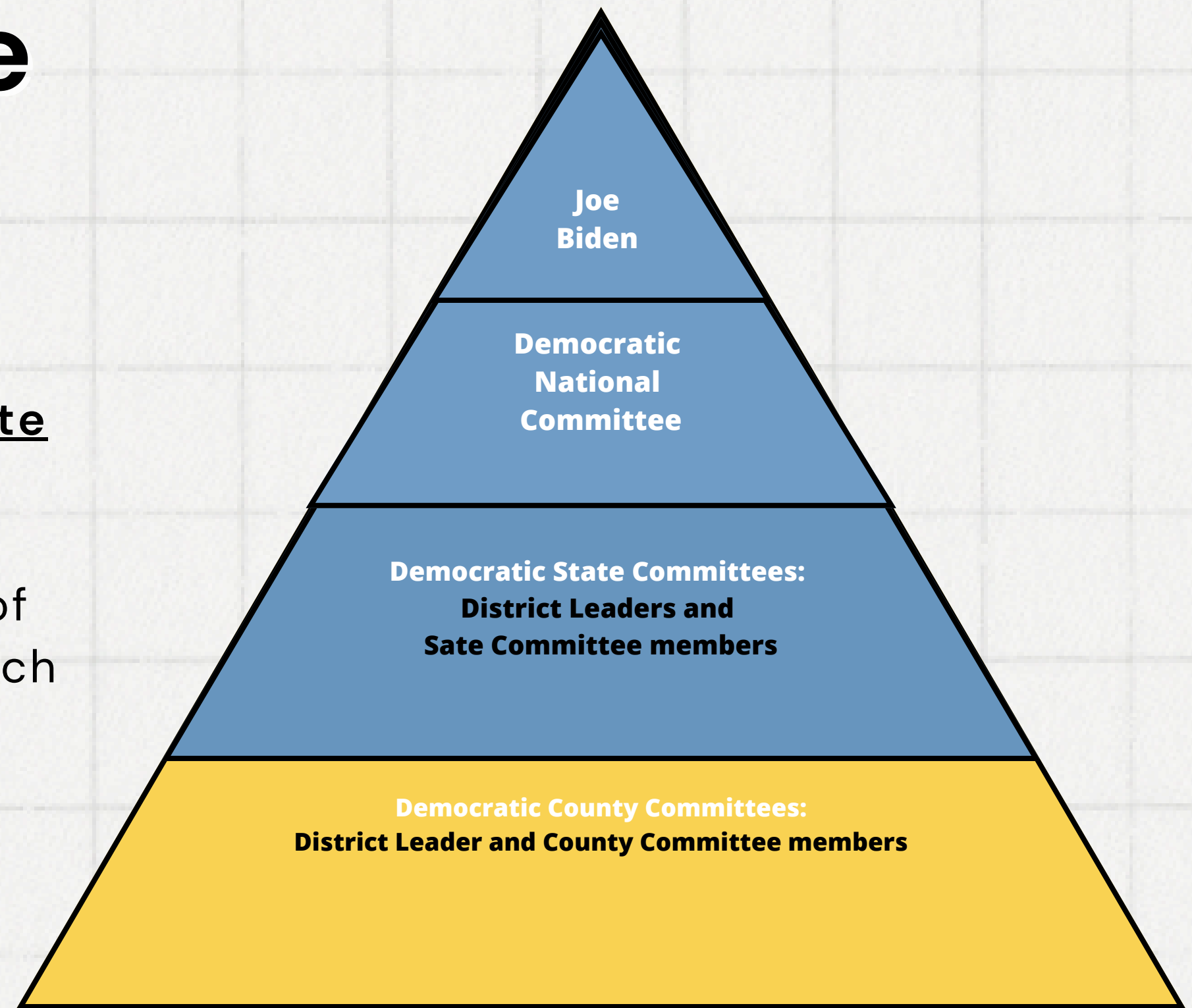




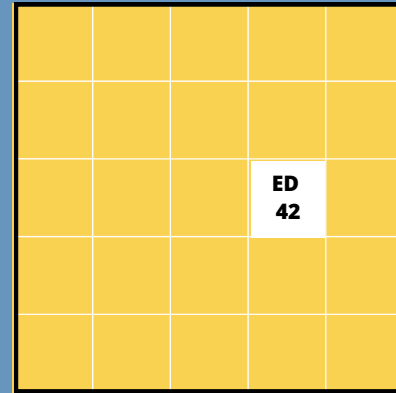
**What is a County
Committee member?**

County Committee structure

The Democratic Party is governed by committees of registered Democrats, from the **National** Committee level, down to **State** Committees, and then **local** community levels. In New York state, the County Committee is the most local, ground level of party governance. And in New York City, each borough has its own County Committee. Manhattan's is the New York County Democratic Party.



Part A



Part B

Part C

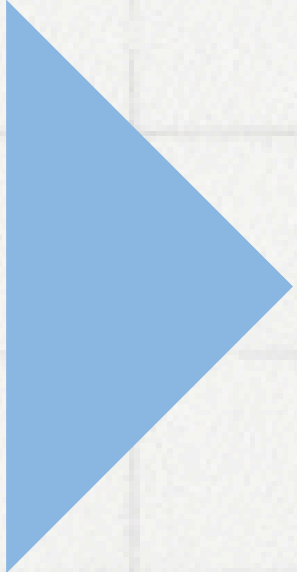

Part D

County Party

District Leaders / Clubs

County Committee

The 74th Assembly District is divided into 4 parts (A / B / C / D). Each part has 2 District Leaders of two different genders (M / F / X). Each part also has a county committee. Part A has a county committee with **53 members**



What does the County Committee do?

Elect Party Leadership

Ex- Officio on Executive Board

Chair

Secretary

Treasurer

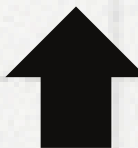
Vice Treasurer

Sergeantat Arms

1st Vice Chair

2nd Vice Chair

3rd Vice Chair



County Committee

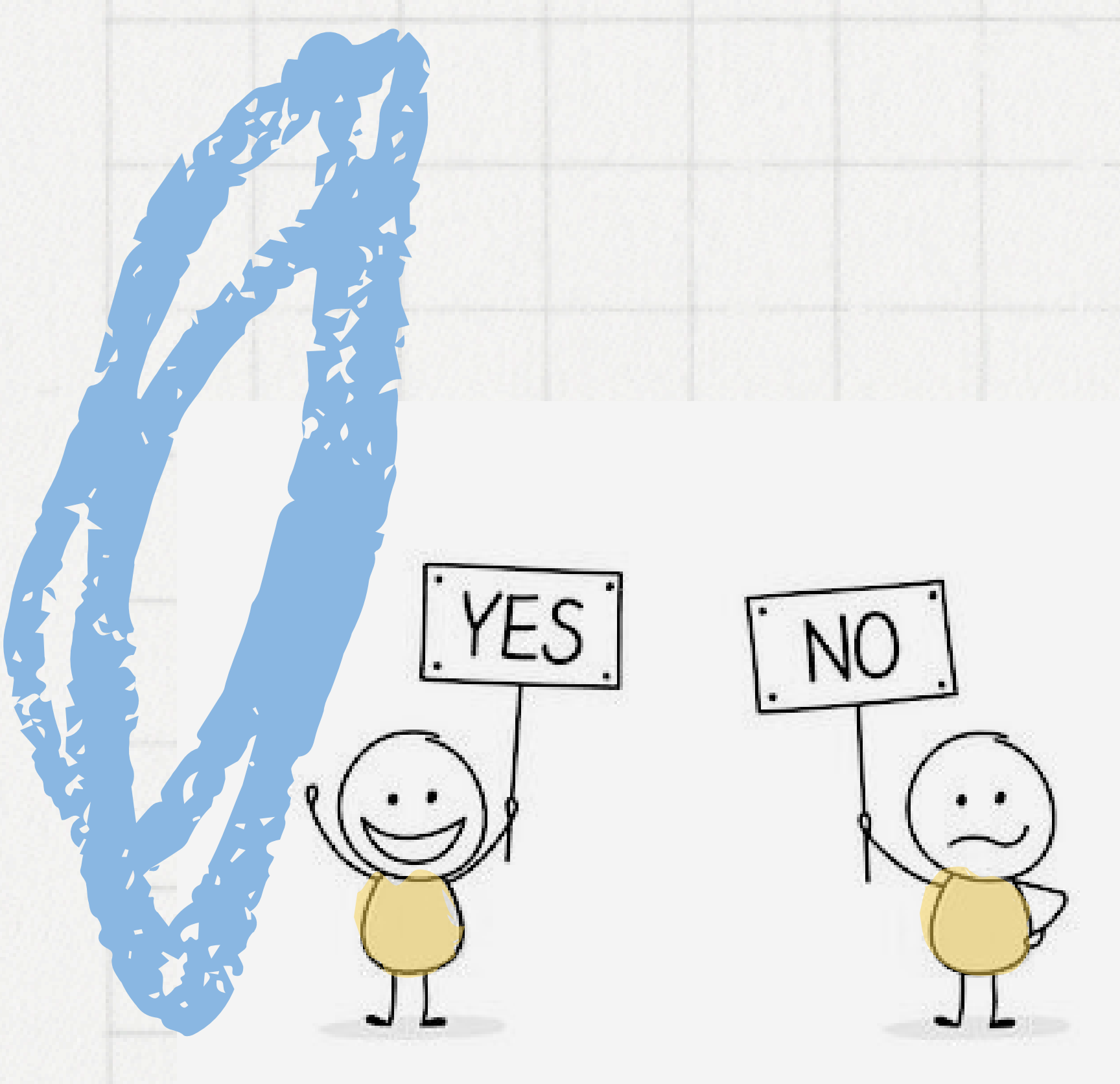


Approve County Rules

THE COUNTY RULES

Must be approved by majority

Amendable by a majority vote of the County
Committee



Vote On Resolutions

RESOLUTIONS

Commit the Party to a position

Must be approved by a majority
of the County Committee

What Has Been Voted on?

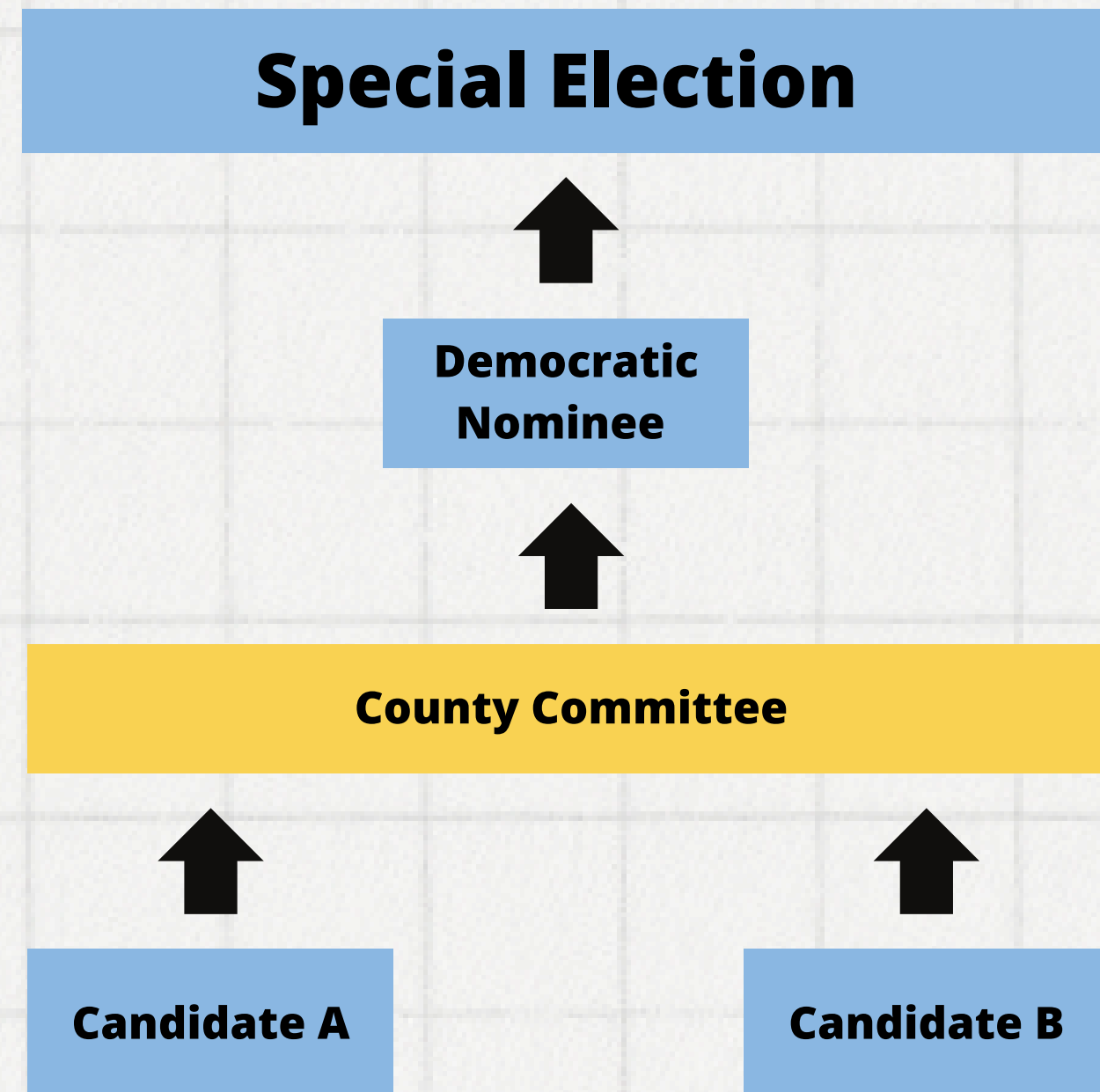
EXAMPLES:

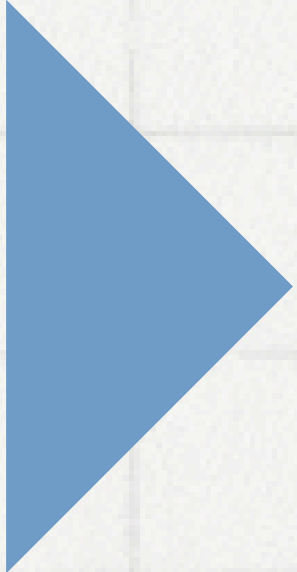
- Proposal to receive a electronic notices for meetings in addition to mailings at least 5 days prior to County Committee Meeting
- Proposal to restrict lobbyists from holding a party position.

FILLING VACANCIES



County Committee members elect a Democratic Nominee in special elections within the county Assembly, State Senate, and Congress when there is a vacancy





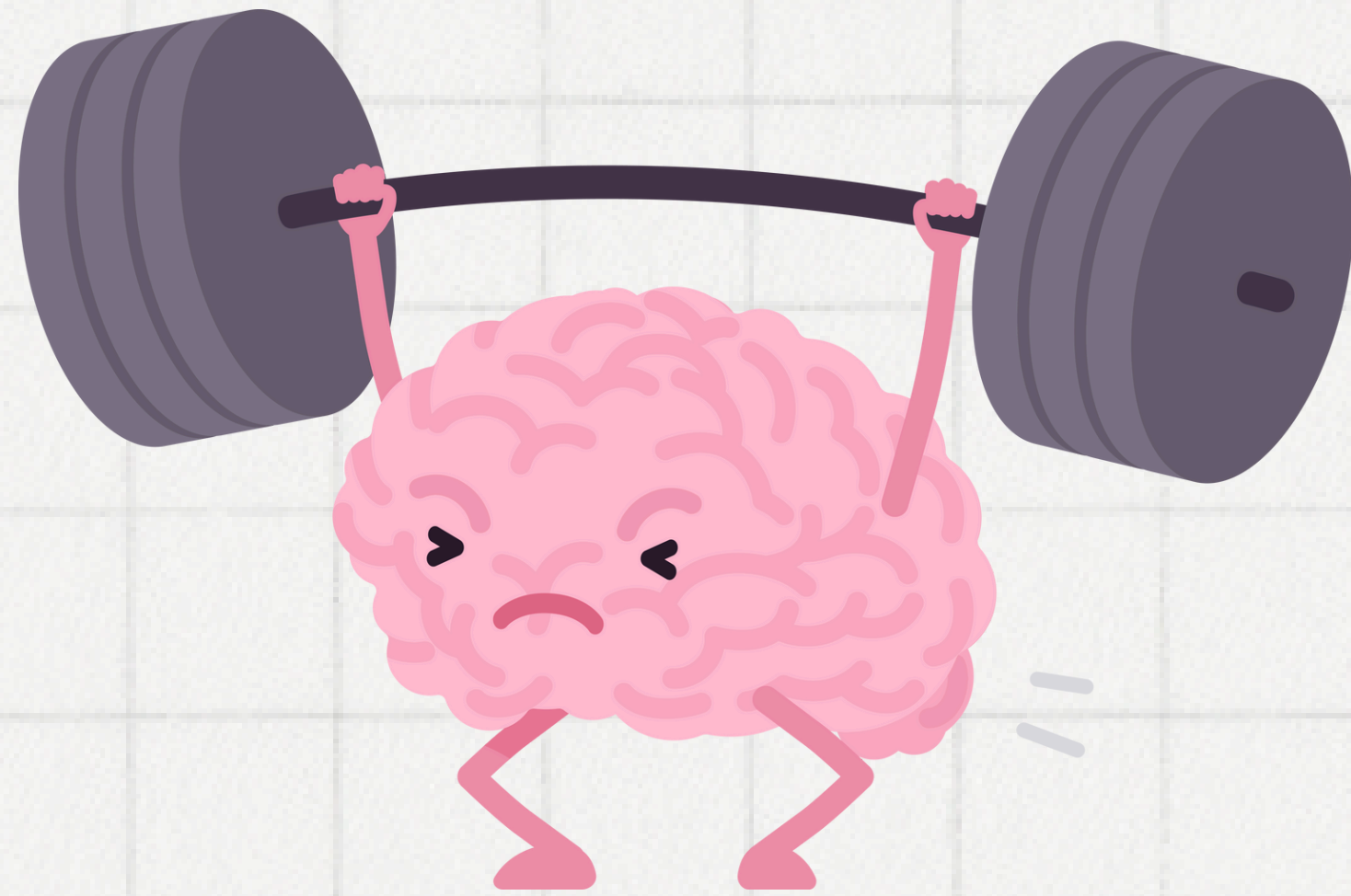
**HOW DOES JOINING THE
COUNTY COMMITTEE FIT
INTO STATEWIDE
POLITICS?**

INFLUENCE THE ISSUES YOU CARE ABOUT?

ORGANIZE!


- ENGAGE THE COMMUNITY
 - CREATE AN ACTIVE BASE OF RESIDENTS
 - SEEK LOCAL SOLUTIONS
-





Learn new skills

- Future trainings could include a host of different topics
- Broaden your political knowledge to become a better Democrat



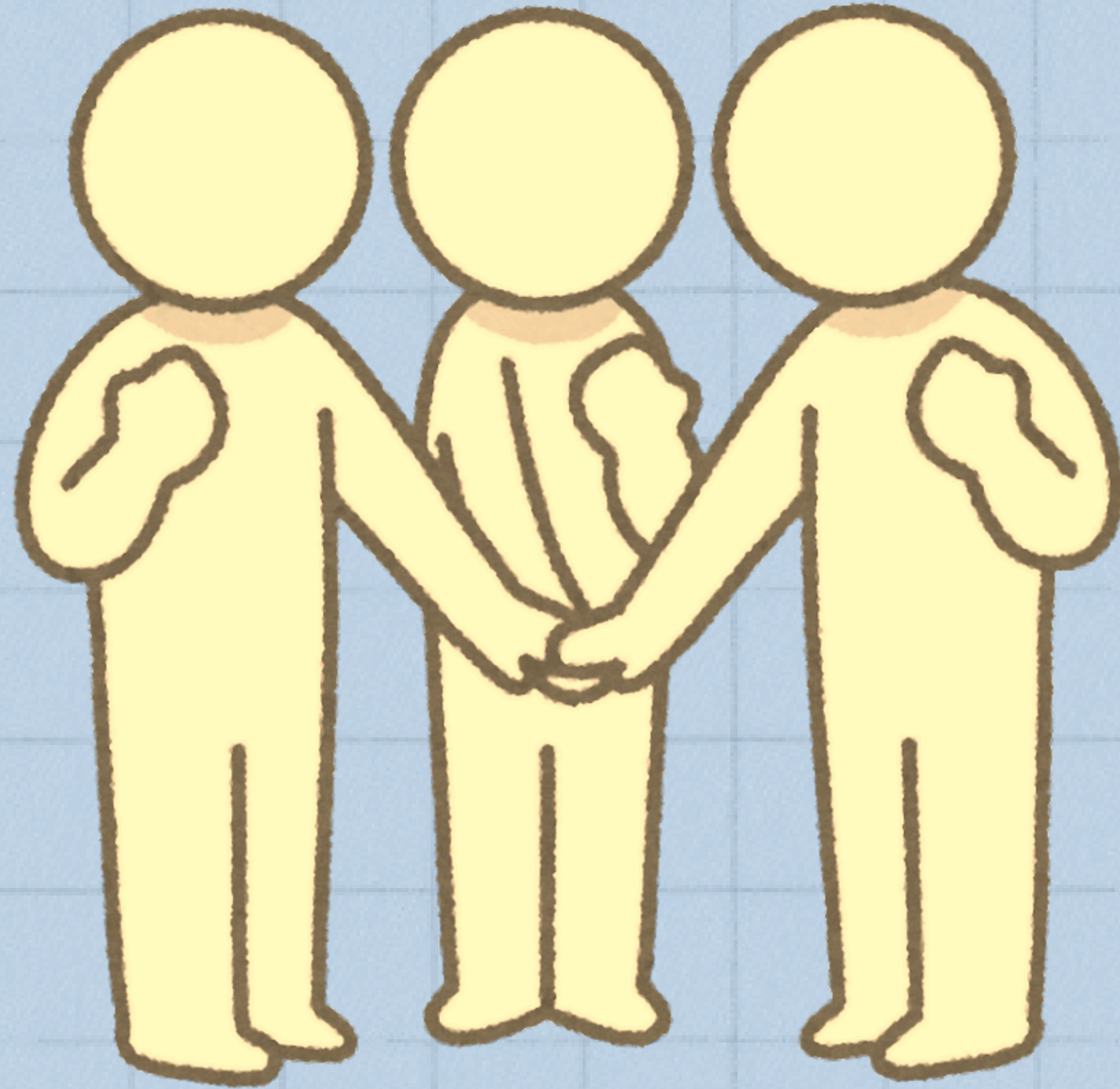
**What is the time
commitment of a
County Committee
member?**

Time commitment of a County Committee member

- Members **serve a two-year term.**
 - You will **spend time petitioning** to get on the ballot.
 - **Meetings are twice a year** in the evenings and can last a few hours. If you cannot attend a meeting, you can give permission to a fellow trusted member to vote for you (voting by proxy).
-



Some members choose to do more than the minimum requirements of the position



- Commit more time to organizing neighbors and advocating for change within the party, 74th Assembly district and with local elected officials.
- Build support around issues you/we care about! (**Form/join subcommittees to tackle specific issues*)
- Get out the vote efforts and engage voters!
- Participate in the judicial election process!
- Use your role to support the campaign of a candidate for office who aligns with your political values!
- Improve how the party is run!



**Are you interested in
joining your County
Committee?**



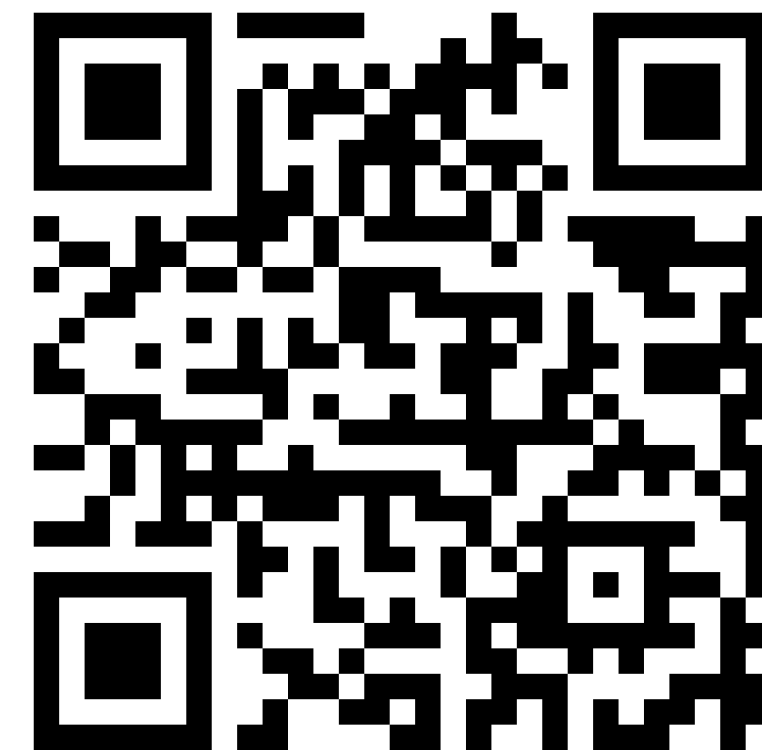
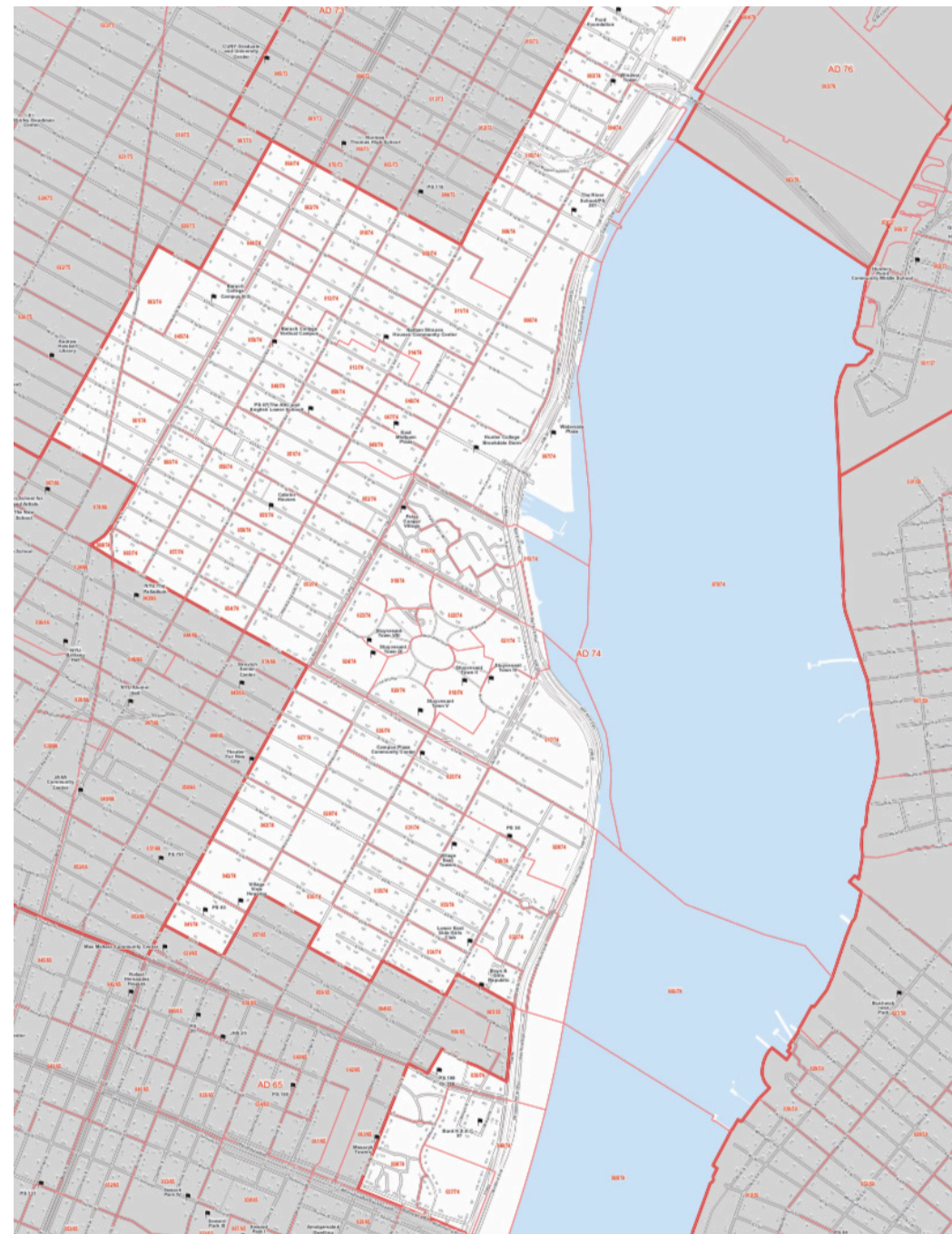
Who can run for County Committee?

Any registered Democrat!

What is your Election District?

Each County Committee member represents an Election District, which is the radius of about 3-4 blocks

Note: You can decide to represent any Election District in the Assembly District you reside in



SCAN QR CODE WITH YOUR PHONE CAMERA
TO FIND YOUR ELECTION DISTRICT
www.nycvotersearch.com

Petitioning



Why do you have to collect petition signatures?

- Petitioning is the act of collecting signatures from registered voters **so a candidate will qualify** to appear on the ballot in the primary election. For most County Committee candidates, the process is simple and your name will not need to appear on the ballot for an election. Petitioning is the only step you need to take!
- Federal, State, and County Committee candidates running for elected positions all have to **petition every two years**.
- As a County Committee candidate, you will collect signatures from at least 5% of registered Democrats in the Election District (ED) that you are running to represent. This is typically between **20-50 signatures** over a few city blocks.



Lets Build Leadership & Community Power

Within the 74th Assembly District Part A