

IDAHO

ARCHITECTURE



2020-2021 | ISSUE 1



AIA
Idaho



ANNUAL OFFICIAL PUBLICATION AND DIRECTORY OF AIA IDAHO

CONTENTS

- 4** AIA Idaho President's Message
- 5** Architects Have the Blueprint for a Better Idaho
- 6** Advocacy and Leadership
- 7** Greetings from AIA Central Idaho
- 8** Future of AIA Regions
- 10** Architecture is Political
- 12** The Importance of Building Codes
- 14** A Reminder of the Impact of Architecture
- 17** AIA Idaho is Building the Disaster Assistance Network
- 19** New and Notable Projects Across Idaho
- 34** AIA Idaho Firm Profiles
- 35** AIA Idaho Member Directory
- 46** AIA Idaho Professional Affiliate Directory

Idaho Architecture is the annual official publication and directory of The American Institute of Architects – Idaho Chapter.

AIA Idaho
(208) 309-2081
aiaidaho@aiaidaho.com
www.aiaidaho.com

©2021 AIA ID | The newsLINK Group, LLC. All rights reserved. Idaho Architecture is published annually by The newsLINK Group, LLC for the AIA Idaho Chapter and is the official publication for this association. The information contained in this publication is intended to provide general information for review, consideration and education. The contents do not constitute legal advice and should not be relied on as such. If you need legal advice or assistance, it is strongly recommended that you contact an attorney as to your circumstances. The statements and opinions expressed in this publication are those of the individual authors and do not necessarily represent the views of the AIA ID, its board of directors, or the publisher. Likewise, the appearance of advertisements within this publication does not constitute an endorsement or recommendation of any product or service advertised. Idaho Architecture is a collective work, and as such, some articles are submitted by authors who are independent of the AIA ID. While Idaho Architecture encourages a first-print policy, in cases where this is not possible, every effort has been made to comply with any known reprint guidelines or restrictions. Content may not be reproduced or reprinted without prior written permission. For further information, please contact the publisher at 855.747.4003.

AIA Idaho State Board Officers 2021

- President**
Chad Blincoe, AIA
- President Elect**
Caleb Spangenberg, AIA NCARB LEED
- Secretary Treasurer**
Nikki Hadfield, AIA
- Past President**
Leland Dille, AIA

AIA Central Idaho Section:

- President**
Dave Davies, AIA
- President Elect**
Leah McMillan, AIA, LEED AP
- Secretary Treasurer**
Ian Hoffman, AIA
- Associate Director**
Caitlin Kessler, Assoc. AIA

AIA Idaho Mountain Section:

- President**
Travis Killmer, Assoc. AIA
- President Elect**
Justin Rumpeltes, AIA
- Secretary Treasurer**
Brenda Moczygemba, AIA

AIA Northern Idaho Section:

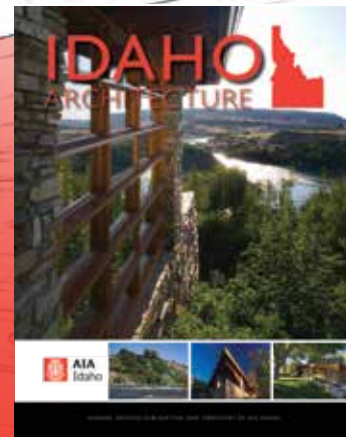
- President**
Ryan Ivie, Assoc. AIA
- University of Idaho Representative**
Phillip G. Mead, AIA Assoc. Prof.

AIA Eastern Idaho Section:

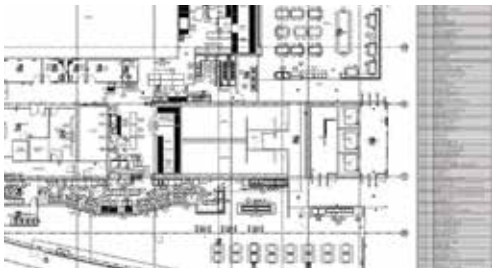
- President**
Scott Lloyd, AIA
- President Elect**
Greg W. Croft, AIA
- Secretary Treasurer**
Latecia Herzog, AIA, NCARB

Ad Index

FoodSpace.....	Page 3
TREANORHL.....	Page 11
Mullins Acoustics.....	Page 13
Blue Print Specialties.....	Page 18
Cushing Terrell.....	Page 37
Jack Smith Architect.....	Page 38
Alder Sale Corporation.....	Page 42
Lombard/Conrad Architects.....	Page 44
Method Studio.....	Page 45
The Hartwell Corporation.....	Page 47



FOODSERVICE CONSULTANCY



DESIGN

- PROGRAM DEVELOPMENT
- SPACE PLANNING
- HEALTH PERMIT FACILITATION
- EQUIPMENT SPECIFICATION
- CAD AND REVIT DESIGN

MANAGE

- CONSTRUCTION ADMINISTRATION
- RFP FACILITATION
- MAINTENANCE COORDINATION
- SAFETY AUDITS
- FINANCIAL REVIEW

INNOVATE

- 3D AND VR VISUALIZATION
- TECHNOLOGY CONSULTING
- CULINARY THINKTANK
- PRODUCT DEVELOPMENT
- ENTREPRENEUR MENTORSHIP



MYFOODSPACE.COM | (408) 244-FOOD (3663)

WE HAVE OFFICES IN EAGLE, ID AND SILICON VALLEY, CA

AIA Idaho 2020 President's Message

BY LELAND DILLE, AIA



I have been impressed with the performance of our Central, Mountain and Eastern Sections and especially pleased with the reactivation of our Northern Section. It has been a challenge for all of them to work around the COVID-19 obstacles. And I would like to thank our Professional Affiliate Members for staying with us through this trying time.

For many years, AIA Idaho has been serving our profession in various ways and with varying degrees of success. Every generation has had to meet the unique challenges of their time. 2020 has certainly presented us with our challenges. Although we were looking forward to hosting the AIA Northwest+Pacific Region's conference and Design Awards event in Sun Valley and other activities throughout the year, all of them were canceled due to the COVID-19 pandemic. It was certainly not the year we expected.

Some seem surprised that COVID-19 may result in some changes in the way we do business. In my experience, members of our profession have always been in a state of change. We make any necessary adjustments and carry on. I have every confidence that what has made our profession relevant to date will continue

through this pandemic and the next crisis that comes along.

I am happy to report that AIA Idaho has been meeting this unique challenge head-on with success on many fronts, including getting our piece of legislation known as the Good Sam Act passed into law. This law will allow us to provide volunteer services after a disaster without exposing us to liability threats. We have also joined with other entities to successfully block an effort within the legislature to change the existing Quality Based Selection Legislation. We have increased our legislators' awareness of us and our profession by being a sponsor of a successful Legislator's Reception. We have developed a good relationship with other industry organizations such as the Associated General Contractors and Professional Engineers Association. We have been invited to participate in the Idaho Building Code Board meetings and are

pleased to have one of our members, Andy Bick, serving as chair of that group. We worked with them and other groups to successfully prevent some state legislators' efforts to remove the existing state energy code. After much effort over several years, our chapter and its several sections are now officially recognized per AIA National's changing accreditation requirements.

I can't say enough good things about our outstanding executive director, Anna Foster. I am not stretching the truth when I say AIA Idaho is what Anna has made it. As a board, we scramble along in her wake. Not that our board hasn't been great. It has, and I wish to thank the board members for their time and effort to make our chapter work.

I would be remiss if I don't mention the outstanding performance of our Advocacy Committee. I have been impressed with the performance of our Central, Mountain and Eastern Sections, and I am especially pleased with the reactivation of our Northern Section. It has been a challenge for all of them to work around the COVID-19 obstacles. And I would like to thank our professional affiliate members for staying with us through this trying time. I am pleased that they see value in supporting our organization and our mission. Their partnership is appreciated.

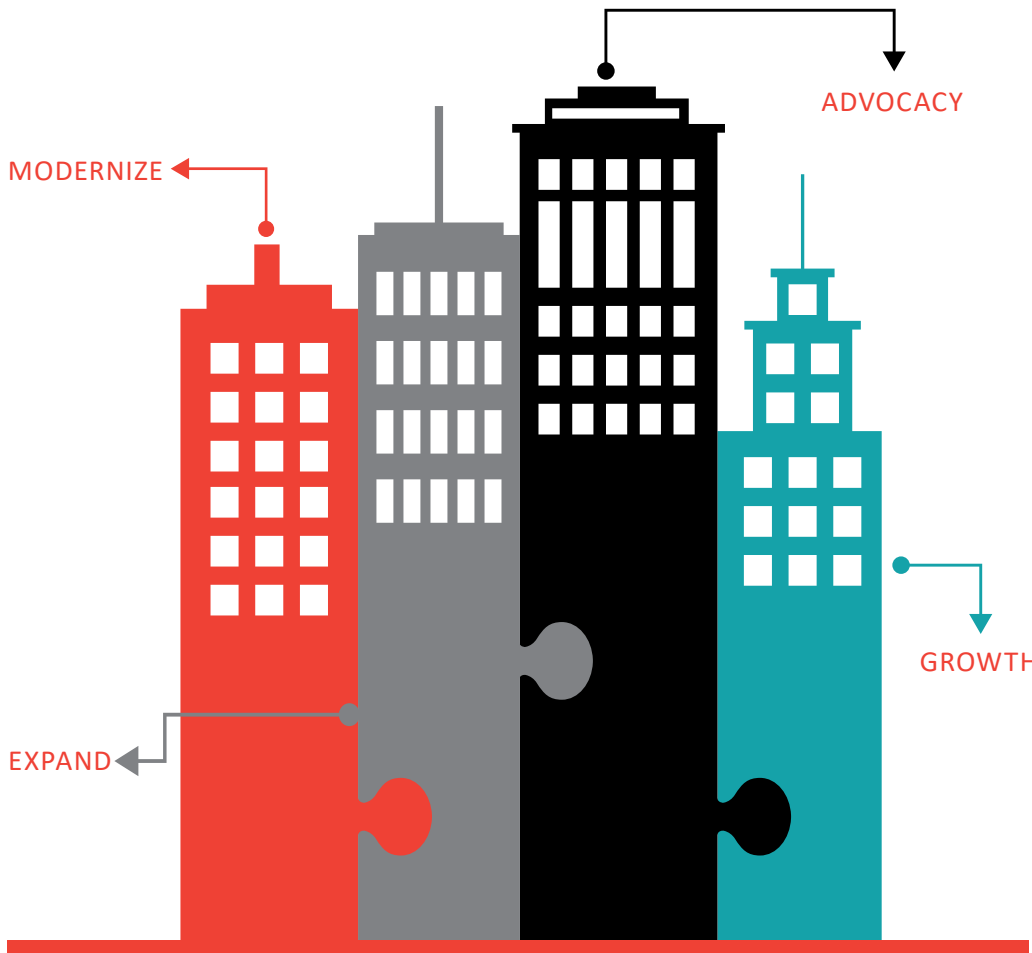
We are all, I am sure, looking forward to making 2021 a great year. The best way for us to become all we can be is for all members to engage. The board would like to hear from you with any ideas and suggestions.

Thank you all for the opportunity to serve as your 2020 AIA Idaho President. 🌟

Architects Have the Blueprint for a Better Idaho

BY ANNA FOSTER, EXECUTIVE DIRECTOR

THE AMERICAN INSTITUTE OF ARCHITECTS – IDAHO CHAPTER



energy codes, urban development and community policies, city and county disaster preparedness, historic preservation, construction and safe school design. Architects are trained to be the experts on many topics that help communities be stronger, smarter and more resilient. Whether you are proposing new legislation, updating planning and zoning regulations, developing land or commercial projects or have a general question, call a local architect about the new design standards and practices we adhere to.

While the world is working together to stop the spread of COVID-19, the members of the American Institute of Architects are best equipped as the leaders of the knowledge community for this very important job: to reimagine and redesign our post-pandemic society so that our communities will become permanently safer, more efficient and someday closer together again. AIA members adhere to the highest standards in the practice of architecture and will ensure that your communities have safe, appealing places to work, study, exercise and play. AIA Idaho members are your resource for a better Idaho!

With my sincere gratitude to everyone who contributed to this first edition, I am thrilled to share this new momentum in Idaho architecture. 🌟

Sincerely,

Anna Foster
Executive Director
The American Institute of Architects
– Idaho Chapter

Dear Friends and Colleagues,

It is my pleasure to welcome you to the first edition of AIA Idaho's new magazine, Idaho Architecture. I am honored to have the opportunity to help launch this exciting new media platform.

Since I took over my position in January 2018, it has been my goal to expand and modernize our member services, create recognition for our members and advocate for our chapter's mission. Our new publication reflects many of the positive changes that AIA Idaho has achieved since then: significant growth in architect and professional affiliate membership, new partnerships across the building industry, a

new advocacy program, a growing disaster preparedness network, a licensure study group and a dynamic board of volunteers committed to the health, safety and welfare of the citizens of the State of Idaho.

I hope our newly redesigned publication and the member directory will serve as a valuable resource to the public, policymakers, individuals and the organizations associated with architecture across Idaho. In the future, I hope to continue to fill this publication with great content from our members and partners, sharing enriching articles and showcasing the dynamic happenings in Idaho architecture.

I encourage you to call an architect in your area to learn more about building and



Advocacy and Leadership

BY BENN BROCKSOME

FOUNDER, BENN BROCKSOME & ASSOCIATES



Over the past several years, it has been my pleasure to advocate for AIA Idaho and the professional architects who strive to create safe, strong and beautiful places to live, work, learn and play in Idaho. Whether we are building a coalition of stakeholders to address emergency response and preparedness or updating our standards, architects are always working to make Idaho safe, strong, and beautiful.

Through the years, we have had tremendous success. We have grown our organization internally and better understand and

support our community partners as we continue to help the communities we live and work in. This localized approach has helped us find creative solutions to issues that are as diverse as our membership. While we may differ politically or philosophically on particular issues, Architects can all agree we want what is best for Idaho and we work hard to make that a reality.

Please enjoy the inaugural edition of Idaho Architecture. Feel free to utilize this directory to get to know an architect in your community. Please also contact me with any questions about policy or process. The next time you find yourself looking at a new project in your community, take a moment to appreciate the diligence, forethought, and skill utilized by a professional architect.

Best wishes for a safe, healthy and successful year and thanks again. 🌟

Benn Brocksome

Founder, Benn Brocksome & Associates

AIA Idaho Board met with Idaho Senators and their representatives on Capitol Hill on March 6, 2019: Russ Fulcher, Mike Simpson, James Risch and Mike Crapo.

We advocated for public policies that create safer schools and improve buildings' energy savings as part of the AIA's National Action Day.

Big thanks to our board members for taking part in this advocacy effort: Jonathan Gallup, AIA, NCARB, Resin Architecture, Idaho Falls; Chad Blincoe, AIA, Blincoe Architecture, Ketchum; Ellie Thomas, Assoc. AIA, Lombard Conrad Architects, Boise; Dave Davies, AIA, CSHQA, Boise; Jared Schmidt, AIA, NCARB, Pivot North Architecture, Boise; Anna Foster, AIA Idaho Executive Director. 🌟



Greetings from AIA Central Idaho

BY DAVE DAVIES, AIA

AIA CENTRAL IDAHO PRESIDENT

At AIA Central Idaho, we have been in a growth mode right up till COVID-19 hit. We moved our lunch venue to a larger place to hold all the members while hosting unique and relevant guest speakers each month. Our chapter has continued to be invigorated with excellent officers. We changed our bylaws, allowing the president and president-elect to serve a two-year term instead of only one-year terms to promote more leadership stability. We have engaged in meaningful ways with future architects by hosting monthly Emerging Professional Community (EPC) gatherings. We remain on a first-name basis with friends at the University of Idaho as we routinely interact with them through scholarships and guest lecturer sharing. Teater's Knoll's cover photo on this year's AIA

directory came from just such an exchange with our friends at the University. Last year we hosted seven well-attended building tours in the Ada/Canyon County area. AIA Central Idaho sponsored 19 CEUs in 2019. Our membership roster has grown to almost 200, not to mention our 35 Professional Affiliate Members taking on an increasing presence at our events. Our biannual surveys remain a key part of seeking a broader membership feedback loop to help keep us on track. Through our administrative assistant's excellent efforts, Lynn Jeffers, we remain a healthy and vibrant group. And financially, we remain on firm footing thanks to you and the outstanding leadership that has gone before us.

AIA Central Idaho continues to fill an important role in our profession. We are glad to be a part of this relevant and essential organization. We hope you will continue to support our mission with your membership and participation!

Sincerely,

Dave Davies, AIA Central Idaho President 2020-2022

Leah McMillan, AIA Central Idaho President-Elect

Ian Hoffman, AIA Central Idaho Secretary-Treasurer

Caitlin Kessler, AIA Associate Director

Honoring our AIA Central Idaho Past Presidents:

2018/19 Jared Schmidt

2017 Mark Heazle

2016 Sydnee Weersing

2015 Jeremy Jeffers

2014 John Day

2013 Wayne Thowless

2012 Jim Glancey

2011 Patty Norberg

2010 Ken Gallegos

2009 S. Kyle Hamilton

2008 Robert Hess

2007 Peter Rockwell

2006 Steve Turney

2005 Jim Otradosky

2004 Sherry McKibben

2003 Steve Christensen

2002 Billy Joe English

2001 Ted Isbell

2000 Mike Simmonds

1999 Jim Murray

1995/97 Stan Cole

1994 Mike Simmons

1993 Jan Frew 🌟



Future of AIA Regions

BY RODERICK ASHLEY, FAIA

NORTHWEST & PACIFIC REGION REPRESENTATIVE TO THE AIA NATIONAL STRATEGIC COUNCIL



AIA Northwest and Pacific Region



Having joined the American Institute of Architects in 1983, I was not always the most active member. I became involved with the AIA Portland Design Awards program several years later but continued to stay on the periphery of activities. I always seemed to find time to attend events but never stepped up to get involved. As a sole practitioner, I always felt there was never time for AIA and wondered what it did for me.

But that began to change — and I was hooked once I attended the Oregon Design Conference. I became a member of the AIA Oregon Council board of directors and served from 2005 until 2016, and after holding every executive committee position, became

president in 2014 and 2015. Before that, I was the liaison from the Architecture Foundation of Oregon to the Center for Architecture and became treasurer after several years on that board. Five firms started the Architecture Foundation of Oregon in Portland, and I was fortunate enough to be invited to serve on their board, eventually becoming president in 2016 and 2017. Each opportunity became a rich experience with a group of peers and friends who will never be forgotten. I guess I simply found some time.

As one of two regional representatives for the Northwest and Pacific Region, I am also a member of the AIA Strategic Council, Class of 2018-2020. My dual role is to help lead the NW&PR and participate in the council's

numerous activities. This year is my last one in this position, and I can say without a doubt that it has been one of the most rewarding opportunities I have had in connection with the AIA and my professional career.

I am often asked what the Strategic Council is about and what it does. When the repositioning discussion began in 2012, the AIA's governance model was challenged, and the national board of directors, consisting of over 60 members, was eventually reduced to 16 officers. Most members of the previous board were region directors elected directly by members of their regions. In reducing the board's size, part of the repositioning plan was to create the Strategic Council, comprising members who would become the institute's strategic thinkers. The new board of directors would have the fiduciary responsibility to the institute's members. The council representatives would inform the institute of issues and opportunities that would affect the profession and lead the institute's strategic planning effort.

Tasked with creating the AIA's Strategic Plan, the council also became referred to as the institute's "Think Tank." The council looks ahead to the future for changes, disruptors, opportunities, and how to assure success for its members and the profession. It is charged with researching and reporting

to the board on various conditions and initiatives the institute and staff might need clarification on or topics they may not be aware of. A maximum of 60 elected councilors (including 37 region representatives) meet face to face four times a year. They achieve their goals by holding monthly virtual assemblies, numerous study-group meetings and conference calls.

During my first two years on the council, I worked with the Transforming Architectural Education Study Group (TAE). We looked far into the future of students and emerging professionals to better understand their needs. We also looked at how the profession and practitioners relied on academia to provide the appropriate education for future architects. As circumstances can evolve quickly, students and practitioners need to be ready and trained for rapid transitions. Our work looked at trends in higher education in general and other professions that were also transforming their educational programs. This work led to our reviewing the documentation for assisting the AIA Board in their role at the National Architectural Accrediting Board's ARForum 19 in Chicago, a collection of the five collaterals (AIA, AIAS, ACSA, NCARB and NAAB) in a progressive conference designed to transform the accreditation process for architecture schools. (Portland's Barbara Sestak, FAIA, is this year's NAAB President. She is the former dean at PSU's College of the Arts.)

Last year my study group encouraged the AIA Board to create a permanent staff position to continue our work. It was of utmost importance to both our current and future practitioners. This year I am working on the Technology's Impact on Practice Study Group (TIP) in conjunction with the Technology in Architectural Practice (TAP) Knowledge Community. We are interested in what technologies are available, how they impact our practice, how our services are valued, and how technology, in general, is continuing to change how we practice. These study groups consist of strategic council representatives, TAP Knowledge Community members, and invited members from throughout the AIA and others outside the AIA. Our work will be

presented to the council the second week of December at our virtual assembly during AIA Governance Week.

About two-thirds of the council are from the 11 multistate regions like the NW&PR, seven single-state regions and the international region. The NW&PR is the fourth largest region and the largest multistate region with over 6,000 members. Approximately 57% of members are assigned to multistate regions, and the International Region has about 2,600 members.

Every year the NW&PR holds our annual meeting and leadership summit in conjunction with one of our component's annual conferences. This year was to be hosted by AIA Idaho in Sun Valley, but it was decided to convene a virtual event in September for obvious reasons. At this gathering, leaders from the NW&PR's components have the opportunity to discuss issues and options affecting their members and operations. Several work sessions are held during this daylong event, and these sessions provide topics from our members that are delivered back to the strategic council to help assemble the next year's study groups. The annual meeting is open to all members in the region. However, to facilitate more in-depth and interactive conversation and collaboration, the leadership summit is reserved for component leadership only.

Having served on the AIA Oregon board of directors for over 10 years, I was privy to early conversations regarding repositioning. The main priorities were assuring that all members would have access to the same opportunities, strengthening member services and streamlining governance. The local, state and national tiers of the institute were studied in detail. The study of regions was overlooked during the repositioning years because regions are not considered to be institute components.

As you may be aware, AIA Portland and AIA Oregon introduced a resolution to study the region structure at the Conference on Architecture, A'18 in Las Vegas. The resolution was approved at the September 2018 AIA Board Meeting. A task force was appointed to study the issues raised in Resolution 18-7 and

prepare a final report with suggestions. Han-Mei Chiang, 2018 AIA Portland Chapter President, and I were selected to be on the 12-person Task Force, along with three national staff members. McKinley and Associates moderated the task force. This consulting firm has been associated with many of AIA's initiatives and knows its operations very well.

At this year's April AIA board meeting, the board voted unanimously to adopt a new model that will reassign region responsibilities to the state council and state chapter level. Dissolving the regions and moving to this single-state model for selecting representatives to the Strategic Council is intended to provide more direct representation for members. A task force has been assembled to study the ramifications of this decision and prepare an operational plan to be presented at next year's annual business meeting in Philadelphia during the A'21 Conference on Architecture. If delegates pass the board action at that event, these changes will not occur until the beginning of 2022. There is little other information available at this time as the task force is still completing its work.

The College of Fellows (COF), Small Firm Exchange (SFx), Young Architects Forum (YAF), and the National Associates Committee (NAC) all have representation coming from the region structure. The NW&PR has five members from these organizations on the Region Board of Delegates. How this structural change impacts these organizations within the institute will be studied and should be a critical component of the ongoing task force study.

There are five at-large representatives to the AIA Strategic Council positions open annually on the council, and I strongly urge all of you to look into this wonderful opportunity to be a part of the future of our profession and the institute. Nominations are typically announced in June and voted on by the council in July. If you have any questions regarding this rewarding opportunity or any other issues affecting your component or our region, please call me at 503-522-5558 or email me at roderickashleyarchitect@gmail.com. ☼



Architecture Is Political

BY LINDSEY LOVE, ASSOC. AIA, NCARB



The Treasury Building in Washington, DC. Courtesy of Wikimedia Commons.

Architects play twister all day long. We wear many hats and have to juggle many balls, from being couples counselors to soils scientists to thermodynamicists to graphic designers. We help people weigh and make decisions. We are in the weeds of the micro to the big picture of the macro. We become experts in many fields throughout our never-ending “education” of a career.

As such, we end up knowing quite a lot about what is going on in the world. We are in a unique position because of our random expertise. We know what equipment is required in an asphalt lab, the cubic feet inside of a standard 30” oven, the difference between U values and R values, how much snow weighs, how to cut a hole through glulam, and how much it will cost to heat or cool a home. These days, we even know the amount of carbon emitted into the atmosphere due to our buildings’ existence.

In the past, architects have typically remained professionally neutral. They have not delved into politics or policy. However, we are now facing an impending climate crisis while knowing

that buildings account for 40–50% of all emissions of CO₂e (embodied carbon) emitted into the atmosphere — both in heating/cooling and material production and transportation. We have a responsibility to get involved.

Few people know and understand the things we do, but we can do our best to specify materials that do less harm. We can design highly efficient buildings that use less energy. We can make a difference as a consequence of our daily work.

We were excited to see that last month the American Institute of Architects (AIA) announced it recognizes the profession of architecture to be a critical leader for addressing climate change. It will take action to direct the organization toward focusing on achieving the bold and necessary goals. The announcement reads as follows:

AIA’s board of directors ratified a bold resolution outlining the decisive action the association will take on climate change over the coming decades — the resolution marks a bold step

forward in positioning the architectural profession as key leaders for climate action. It outlines three key areas: declare an urgent climate imperative for carbon reduction; transform the day-to-day built practice of architects to achieve a zero-carbon, equitable, resilient and healthy built environment; and leverage support of peers, clients, policymakers and the public at large.

(Flynn, Katherine, AIA announces Big Move Toward Environmental Stewardship, American Institute of Architects, Sept. 13, 2019.)

Love | Schack Architecture takes our responsibility seriously. We have taken action over the past years to educate ourselves, and our communities about the impact buildings have and how we can change the culture of the building industry in the Greater Yellowstone region (and further).

Lotus, a senior team member at Love | Schack, put it this way: “Architecture is not neutral. Massive amounts of money and resources are put into infrastructure and buildings, and we all know that moving resources has political, environmental and social consequences. It is a huge part of our economy and the implications, when analyzed, are broad, fascinating and real.”

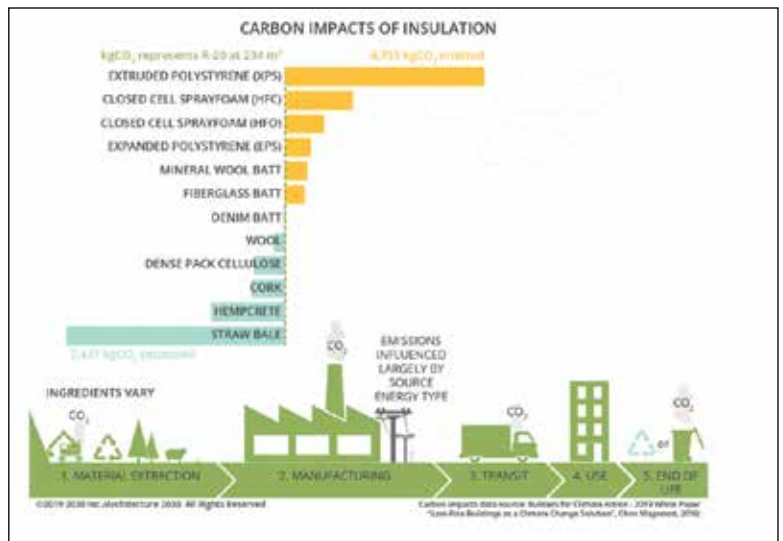
For instance, it is not every day that one spends \$20K. However, in building a home, you will spend \$20K many times over in a very short time. \$20K might go to one insulation company. A good portion of that investment will go to the manufacturer; say \$10K. That manufacturer has costs and will make some profit, and therefore, your choice of insulation supports that particular industry. In some cases, the “industry” might include a medium-sized sheep farming company – if you chose to use wool batts in your home. Or it might be a large chemical corporation if you decide to use spray foam.

The social, environmental and political impact of choices we make in buying food and other products is in our face daily, but when we compare it to the choices we make in building buildings, at the rate we build them, well – that impact adds up FAST.

The Idaho State Legislature recently passed a bill to adopt a version of the updated 2018 building codes. These codes include an International Energy Conservation Code (IECC), which requires that buildings incorporate certain performance metrics such as R-values based upon their climate.

Before voting to adopt the codes, which legislators thankfully did, they held a hearing about eliminating the IECC from the code and blocking any local jurisdictions from adopting it.

This bill is the first time since 2012 that an updated code has been adopted in the state. 🌱



The social, environmental, and political impact of choices we make in buying food and other products is in our face daily, but when we compare it to the choices we make in building buildings, at the rate we build them, well – that impact adds up FAST.

visit us at treanorhl.com | 208.501.8267

Architecture

Nationally recognized experts in Advanced Industries, Education, Greek Life, Health, Historic Preservation, Housing/Mixed-Use, Justice, Science & Technology, and Student Life.

TREANORHL



The Importance of Building Codes

BY DREW MORGAN, SE, BHB STRUCTURAL



While not scientifically proven, it is well known in the AEC community that it takes approximately three years to become familiar with an edition of the building code. In unrelated news, the ICC publishes a new version of their model building codes every three years.

Let's assume for a moment that the ICC does not exist solely to burden architects and engineers with new standards to learn and owners and contractors with higher costs of construction. What then is the purpose of continually rewriting the rules that we all play by?

As engineers, we are to “dedicate [our] professional knowledge and skill to the advancement and betterment of human welfare.”¹ Architects have a similar

creed. Building technologies, systems, and knowledge are advancing as much as other sectors of the economy. If we continue to design buildings the way we have always done and ignore these advancements, we rob the public of their benefits. Frequently updating and implementing new building codes is how design professionals apply the latest building technology to benefit building owners and society in general.

While mostly outside the purview of a structural engineer's scope, the energy code provides a great example of this principle. Buildings account for about 40% of energy usage, 70% of electricity usage and 40% of worldwide carbon emissions.² Making buildings more energy efficient is the most effective way for society to decrease greenhouse

gas emissions and energy dependence. Building owners see a direct benefit to updated energy codes also, as “buildings constructed under the 2012 code reduce energy usage by more than a third compared with the 2006 code.”³

Now let's look at an example closer to a structural engineer's heart, design loads for buildings.⁴ Loads on buildings can reasonably be divided into three categories: dead loads, live loads and environmental loads.

Dead loads, the weight of the structure itself and anything permanently fixed are easily determined. We know how much things weigh and we add them up.

Live loads include the weight of the people, furniture, partition walls, and anything else that moves around during


the life of the structure. It would be impossible to predict the total amount of people or type and weight of furniture, so these loads are not calculated like dead loads but are instead prescribed by code. The prescribed loads tend to be very conservative. For example, the required live load for an office building is 50 psf, but studies show it will normally see a load of about 11 psf.

Environmental loads include loads from snow, rain, wind and earthquakes. Unlike dead and live loads, these loads can vary greatly depending on location. A building on the Florida coast will be designed for higher wind and rain loads compared to a building in central Idaho that would be designed for higher seismic and snow loads. Environmental loads are constantly being studied to increase the accuracy of the design requirements in the code. Using older editions of the code means you do not have the latest information on structural loading. Therefore, the structure will be either under-designed and increase the occupants' risk or be over-designed and add unnecessary costs. The following are some examples.

Snow loads in many western states are left out of the code and are prescribed by the states or local jurisdictions. These states often rely on universities' research to provide the data needed to determine what the local snow load should be. Recently in Utah, a massive study led to the conclusion that many of the snow loads were too high, and the latest state adoption of the code reduced the required snow loads for most areas in the state. In Idaho, snow loads are often determined by studies provided by the University of Idaho. Their most recent report was released in 2015 and relied on data from 530 stations in Idaho and neighboring states. This report is the first released since 1986, which relied on data from 153 stations.⁵ If your jurisdiction has not updated their required snow load since 2015, they are using very old information.

Wind load provisions have changed considerably in the past few code cycles. While most of these changes did not substantially change the wind load applied, the latest code cycle significantly revised the map that indicates what wind speeds should be designed for in each area. Most of the country saw a decrease

**MULLINS
ACOUSTICS**



**architectural
environmental
and industrial
noise control**

EARL MULLINS, PE

10400 Overland Road #211 Boise, ID 83709

www.mullinsacoustics.com (208) 514-6264

in wind loads, while some coastal areas saw an increase. In Idaho, a typical building under the 2018 code could be designed for 102 mph winds, where the 2015 code requires 115 mph, resulting in a 20% decrease of the required lateral wind load.

Another significant change required by the 2018 code is requiring site-specific geotechnical studies to determine seismic loads in higher seismic areas with poor soils. These will make the loads more accurate for each site, which allows the code to be less conservative where unneeded and apply higher loads where the risk is indeed higher.

As shown in these examples, newer building codes use updated information to allocate higher loads where they are required and allow other structures to not be over-designed. Similarly, newer building codes allow designers to allocate risk more accurately through performance-based design. In performance-based design, building owners and jurisdictions can determine what level of performance they expect from their building in various levels of loading scenarios. For example, an office building or retail store could be designed to remain operational after a moderate earthquake, be repairable but not immediately occupiable after a larger earthquake, and prevent collapse and loss of life after the largest earthquake. Conversely, a hospital

or other essential facility would be designed to remain operational after even the largest earthquake.

It is not economically viable to design every building to survive everything Mother Nature can throw at us. When we design the most current available building codes, we leverage the latest knowledge to allocate our dollars where they can do the most to keep our communities safe and prosperous. 🌟

¹ National Society of Professional Engineers, "Engineers' Creed"

² Pacific Northwest National Laboratory, March 2014

³ Environmental and Energy Study Institute, "The Value and Impact of Building Codes," Sept. 30, 2013

⁴ Load requirements for structural design are found in ASCE 7, "Minimum Design Loads and Associated Criteria for Buildings and Other Structures" which is adopted by reference in the IBC

⁵ University of Idaho, Department of Civil Engineering, "Ground Snow Loads for Idaho — 2015 Edition"

BHB Structural has become one of the largest structural engineering firms in the Intermountain West by focusing on delivering responsive, well-coordinated and creative structural engineering to every project. BHB Associate Drew Morgan has eight years of structural engineering experience and is a registered Structural Engineer (SE). He frequently gives AIA CES presentation on a variety of topics, including leading bi-annual ARE Structural Systems Workshops. You can reach Drew at 208.891.7157 or email him at drew.morgan@bhbengineers.com and learn more about BHB Structural by visiting www.bhbstructural.com



A Reminder of the Impact of Architecture

BY KRISJAN HINER



“The mission of an architect is to help people understand how to make life more beautiful, the world a better one for living in, and to give a reason, rhyme and meaning to life.”

— Frank Lloyd Wright, 1957

If you’ve never had the opportunity to visit a Frank Lloyd Wright building, I hope you have the chance sometime soon. Maybe it’s the mystique, the well-known and documented architectural significance or the hype, but visiting a Frank Lloyd Wright building is a near-divine experience.

I was fortunate enough to recently visit the Archie Teater Studio, also known as Teater’s Knoll, Idaho’s only Frank Lloyd

Wright building, in Bliss, Idaho. Not only did I visit the site, but the property owner, Henry Whiting, gave me a private tour.

During our two-hour visit, we talked about architecture, music, furniture, art and life. To my surprise, our conversation was much more about life, family and relationships than architecture. Of course, we talked about architecture, Frank Lloyd Wright, design, furniture, and renovating and maintaining Teater’s Knoll. But after

our conversation, as I was driving away, all I could think of were the people Henry talked about. The countless amazing-sounding people in Henry’s life that he would never have met if not for Teater’s Knoll. The people who were already in his life were brought closer together because of Teater’s Knoll. The experiences he had both at Teater’s Knoll and other Frank Lloyd Wright sites. How architecture literally shaped his life. The way that house and numerous other Frank Lloyd Wright buildings continue to bring people together.

Isn’t that what good design is supposed to do? Bring people together?

Finding the property isn’t exactly easy if you don’t know what you’re looking for. It’s outside of Bliss’s tiny town, Idaho, about 90 minutes east of Boise. The narrow winding road high above the Snake River is sprinkled with ranches amid the high desert. Teater’s Knoll is well-concealed behind a thicket of vegetation and a brown-painted wood wall and gate. The only signifying mark of the property is a small, understated teal-green-lettered sign with the words “Teaters Knoll.” Even using Google Maps, I sped past the property once, doubled back and found the small pull-out in front of the gate. As soon as I arrived, the gate opened and a friendly black dog ran out to greet me. Standing by the gate was my new friend Henry.

We walked inside and Henry pulled the gate closed. As we walked up the drive toward the front of the house, we exchanged pleasantries while I looked at the stunning home I’ve heard so much about. The house lies only 30 feet or so, from the road, but driving by, you would never know what was below. The first thing I noticed about the home was the color, texture, and rhythm of the Oakley stone swaddling the home. The

rich, golden, earthy tones glowed in the midmorning sun.

The second detail I noticed was the view of the Snake River. The Snake River canyon is perfectly framed between the trees and two seat walls constructed from the same Oakley stone as the house from the entry. The placement of the home and the way it blends into the landscape is nothing short of perfect. Just as Frank Lloyd Wright indeed envisioned.

Before going inside, Henry and I stood outside the front door, chit-chatting and getting to know each other. At this early point in our interview, I realized that, as much as Henry loved his home, he loved the people and relationships he's made because of the house as much, if not more.

The first of many stories Henry told me wasn't about the home's architecture, the anachronism of Wright and his work, or about the process of completely renovating the house. The first story he told me was about the lengths his father-in-law went to find him an authentic Frank Lloyd Wright red tile.

On the wall by the entry of certain Frank Lloyd Wright homes is a small red ceramic tile with Frank Lloyd Wright's initials. These red tiles were reserved for projects with which the architect was notably satisfied. Buildings such as the Harold Price Sr. House in Paradise Valley, Arizona, Taliesin West in Scottsdale, the Solomon R. Guggenheim in New York, and numerous others all have the famous red tile. Frank Lloyd Wright did not give the Teater's a red ceramic tile for one reason or another.

Through an exalted series of friends, acquaintances, relatives, favors and relationships, Henry's father-in-law was able to acquire a brand-new, authentic red Frank Lloyd Wright tile from the original maker. As Henry recounted his father-in-law, presenting him with the tile, he paused, holding back tears. For sure, the gift was meaningful and unique, but Henry was choked up not because of the gift itself, but because he so appreciated and loved his father-in-law.

Once we were inside, sitting on the couch in the main studio room beneath the iconic Teater's Knoll grid-windows



On the wall by the entry of certain Frank Lloyd Wright homes is a small red ceramic tile with Frank Lloyd Wright's initials. These red tiles were reserved for projects with which the architect was notably satisfied.

overlooking the prow and the Snake River, I had to ask, "So did this house find you, or did you find the house?" I knew this was a big question that had already been answered. I just wanted to know what he would say. Henry laughed and replied, "Have you read my book?" The perfect answer to a silly question. Indeed I had. In Henry's book, "At Nature's Edge, Frank Lloyd Wright's Artist Studio," Henry recounts how he came to know of Teater's Knoll, his first experience peering over the fence to catch a glimpse, his purchase of the home, its renovation, the design and history of the studio and his life there.

As we continued to chat, Henry frequently mentioned his uncle Alden and referred to him as the most impactful person in his life. Uncle Alden Dow was a Frank Lloyd Wright apprentice in the early 1930s who went on to design numerous

prolific buildings and heavily contributed to the architectural style that would come to be known as Michigan Modern. As Henry was narrating his introduction to and purchase of Teater's Knoll, he recounted a trip to Florida to visit Uncle Alden and discuss his property's possible procurement. Of course, uncle Alden thought purchasing this Frank Lloyd Wright home was a good idea. "If I were your father, I'd buy it for you," said uncle Alden. "But I'm not and I won't because if I did, it wouldn't mean as much."

Henry continued to tell me that shortly after purchasing the property, he flew to Arizona to visit the Frank Lloyd Wright Foundation at Taliesin West in Scottsdale to talk about his upcoming renovation and, hopefully, meet many of the professionals he had read about.

► — continued on page 16





► — continued from page 15

Two people of significance Henry was able to meet were Tom Casey and Olgivanna Wright. Tom Casey was a Wright apprentice during the design of Teater's Knoll and Olgivanna Wright was Frank Lloyd Wright's widow. Both people had fond memories of Uncle Alden, and Henry again welled up talking about the experience of meeting both of them. Without Teater's Knoll, Henry surely wouldn't have met either of these people.

As we continued to talk, Henry radiated as he detailed the countless dinner parties, visitors, projects, trips, experiences, and

relationships he built over the years in and around Teater's Knoll and other Frank Lloyd Wright buildings.

The home's interior is visually stunning, filled with art, furniture, and decor that complements and enhances every inch of the space. Some of the furniture pieces are one-of-a-kind hand-built works constructed from original Frank Lloyd Wright's plans by Henry and one of his friends, a Sun Valley craftsman.

Much of the sculpture was created by Henry's late wife, artist and sculptor Lynn

Fawcett Whiting. As we toured the space, Henry described Lynn as someone who floated through life, living every day as if it were an art form. Henry described life with Lynn as joy, surprise and delight. We would all be so lucky to have someone like that in our lives — the perfect metaphor for life itself.

Seeing and experiencing this impressive building was a treat, for sure. Making a new friend and being reminded of the importance of and impact architecture can have on life was an experience I will always remember. 🌟

AIA Idaho Is Building the Disaster Assistance Network

BY IAN HOFFMAN, AIA IDAHO DISASTER NETWORK COORDINATOR
AND ANNA FOSTER, AIA IDAHO EXECUTIVE DIRECTOR



2020 has been a whirlwind year, testing us all in our capacity to respond to a global disaster — and on top of others, including earthquakes, wildfires, floods, and civil unrest. As this challenging year comes to a close, it's an opportunity to look back at what we've collectively accomplished, where we've found roadblocks, and how we can work together in the year ahead to build our communities' resilience across the country.

Two years ago, every AIA state component appointed a State Disaster Coordinator as one of the Core Member Services. This requirement recognizes the critical importance of disaster preparedness in each state. Many local components have also worked to enhance their disaster preparedness. We are collectively stronger when information, lessons learned, and examples are shared throughout the AIA Disaster Assistance Network. Whether the issue is COVID-19 response and

recovery, wildfire recovery technical support, new policies and legislation, evolving challenges and emerging partnerships or something in between, AIA is not standing in the back row.

As a first step to engage in the National Disaster Assistance Network, AIA Idaho sponsored our first bill ever, "The Good Sam" bill, which became effective in July 2020.

What is a Good Samaritan (Good Sam) Law?

Good Sam Law reduces liability to Idaho professionals while serving communities in times of crisis. Without proper legislation in place, volunteers are exposing themselves to liability when performing voluntary services. AIA Idaho wrote and supported house bill 529, also known as the Good Samaritan Law, to allow licensed architects, professional engineers, and contractors the ability to help our fellow Idahoans in times of crisis.

Why now?

Without this change in the law, the state and federal government would have to look outside of Idaho for help when help is available here in the state. Architects are ethically obligated to assist in protecting the health, safety and welfare of the public. In many states, architects, engineers, and contractors are part of the state disaster response network and voluntarily assist their communities. Their knowledge of structural, mechanical, electrical, civil, or other related fields is invaluable in determining our residential and commercial structures' safety.

How will this affect Idaho citizens?

In times of disaster, building departments are often overwhelmed and need assistance to help people get back into their homes faster. Professionals such as architects, engineers, and contractors trained in structural assessment and building evaluation can provide much-needed support to the building inspectors and officials. Faster response times mean citizens can return to their homes and work safely, unburdening their potentially overwhelmed neighbors and trusted state officials and ensuring safety during crisis or disaster.

Who will be impacted and who won't?

Those communities impacted by crisis or disaster will now be able to rely on trusted, licensed and trained local professionals such as architects, engineers and contractors to ensure their safety and well-being. The service rendered applies to the entire building or system's structural integrity or any

► — continued on page 18



► — continued from page 17

portion thereof affecting public safety. The service is provided during the time in which the emergency exists.

Why was this change needed?

Idaho is one of the last remaining states to adopt the Good Samaritan laws that protect professionals, such as architects, engineers and contractors, when an emergency is declared. This expansion would allow trained volunteers the ability to help their fellow Idahoans at no cost to the taxpayer.

The efforts to pass this legislation were endorsed by AIA Idaho and construction industry partners: ACEC, AGC, Idaho BCA and other organizations. Our next step is to offer the Safety Assessment Training (SAP) to all eligible Idahoans and make sure that as many of our members as are willing receive this important training. The bill was written as follows:

HOUSE BILL NO. 529 BY WAYS AND MEANS COMMITTEE AN ACT RELATING TO PARTIES TO ACTIONS; AMENDING CHAPTER 3, TITLE 5, IDAHO CODE, BY THE ADDITION OF A NEW SECTION 5-345, IDAHO CODE, TO PROVIDE CIVIL IMMUNITY FOR ARCHITECTS, ENGINEERS, AND CONTRACTORS IN CERTAIN INSTANCES AND TO PROVIDE APPLICABILITY.

Be It Enacted by the Legislature of the State of Idaho:

SECTION 1. That Chapter 3, Title 5, Idaho Code, be, and the same is hereby amended by the addition thereto of a NEW SECTION, to be known and designated as Section 5-345, Idaho Code, and to read as follows:

IMMUNITY FOR AID DURING AN EMERGENCY.

(1) No architect, engineer, or contractor may be held liable for personal injury, wrongful death, property damage, or other loss related to any architectural, structural, electrical, mechanical, construction, design, or other professional service provided by the architect or engineer, voluntarily or without compensation, or the contractor at the request or approval of a national, state, or local public official in response to a declared national, state, or local emergency, a disaster, or a catastrophic event. The provisions of this subsection shall apply to services rendered within ninety (90) days following the end of the declared emergency, disaster, or catastrophic event unless extended by executive order of the governor.

(2) Limited liability under this section shall not apply if the injury, death, or damage is the result of unreasonable acts, gross negligence, or willful or wanton misconduct or if the architect, engineer, or contractor did not act as a reasonable architect, engineer, or contractor would have under the same or similar circumstances. ☼

Two years ago, every AIA state component appointed a State Disaster Coordinator as one of the Core Member Services. This requirement recognizes the critical importance of disaster preparedness in each state. Many local components have also worked to enhance their disaster preparedness.



Interior Wall Coverings
Interior Signs • Exterior Signs
Window Covering
Custom Wall Protection
Specialty Display Graphics
Event Graphics
ADA Signage
Traditional Printing Services
Noise Reduction Panels with Custom Graphic

Interiors



Exteriors



208-377-0294

Contact Will Glasgow for more info
at will@bpsboise.com, www.bpsboise.com
6205 W. Overland Road • Boise, Idaho 83709

"We've been a Family owned printing business in the Treasure Valley for over 45 years. Come talk to us about your printing or signage needs. We'll treat you like one of our own."



New and Notable Projects Across Idaho



Chobani Office Building and Global R&D Center – CSHQA



CSHQA designed this 71,000-SF office building and 14,000-SF research and development lab for yogurt-maker Chobani. The facility is part innovation center and part community center, meant to benefit both Chobani employees and the community of Twin Falls.

The new building, in addition to providing more office space for the company, offers many amenities for all Chobani employees: A chef-managed cafeteria serving 24 hours per day, fitness center with full-time training professionals, lactation space for new mothers, lounge areas, non-denominational faith center, and a 7,000-SF dedicated gathering space for town halls, shared dining, celebrations and relaxation.

The new lab space, featuring a full test kitchen, is home to 45 food scientists developing new flavors and new products.

The building was designed with a goal of LEED Silver. Sustainable features include: low-flow water fixtures, resilient native plant landscaping, LED lighting and a 30,000-SF reflective roof. Smart-glass windows tint automatically to reduce glare, passively boost cooling, and allow for more natural lighting. The goal of these sustainable measures is for the building to use 30% less water and 25% less energy than a similar space.

CSHQA

Principal: Martin Hahle

Location: Twin Falls, Idaho

Completed: 2018

Size: 71,000 SF office building + 14,000 SF lab

CSHQA Principal: Martin Hahle 🏠

Awards:

- ENR Mountain States 2020 Best Projects – Merit Award – Office/Retail/Mixed-Use Development
- Idaho Business Review 2020 Top Projects – 1st Place – Private



Wallen Road Residence — DKMullin Architects



Wallen Road snakes out of Moscow, Idaho, climbing approximately 500 ft. before straddling a ridge offering panoramic views of the Palouse Range, the region's primary land feature. Located on 25 acres, the site is forested below and opens to an elevated knoll at the south end of the property, affording stunning views, good southern exposure and ease of access in winter months. An old, gnarly existing orchard provides a natural privacy screen from the county road for the dwelling. Design objectives were to create a vernacular building that appears as old relative to the land and orchard, to preserve the native grasses, to incorporate sustainable aspects (solar gain, reclaimed wood, construction-waste reduction and a green roof) and to satisfy the robust programmatic requirements of the adults and children living there.

The house, with its gabled form and saddlebag sheds anchoring the ends, is laid out on a 4'-0" grid in both directions. The narrow side of the house measures 24'-0" wide, allowing south light in winter months to penetrate deep into the primary spaces on the main level through oversized apertures. To accomplish this, the house stretches out along the east/west axis, enabling each main area its own solar gain. In the central part of the house, the living room with Rumford fireplace holds the largest portions of glazing with adjacent exterior decks. This space opens up vertically to bedroom and loft areas above, creating a spacious yet warm and comforting feel for its inhabitants.

To obtain simple expression and simplicity of building, the form is of 8:12 gable, 1.5 stories, laid out on a 4'-0" grid in both directions. This served for ease of use and minimal waste of standardized construction materials. The wood-framed structure has 6" exterior walls with closed-cell blown-in foam insulation at all walls and roof cavities. All framing materials were garnered from sustainable forests.

The house is clad in salvaged barn siding and laid over 1" horizontal furring for a natural air gap. Windows are aluminum-clad VGDF (vertical grain Douglas Fir) wood. The exterior incorporates 1/8" bare steel at the entry and rear porch as accents. Bare steel portions are protected, left untreated for natural patina aesthetic. A green roof over the garage houses native species in 12" composite soil over filter-fabric/waterproof membranes, atop primed marine-grade plywood.



The interior of the house incorporates VGDF throughout. Reclaimed VGDF boards are used for flooring and wall paneling in the living area. Capable of burning 48" logs over its solid basalt hearth and clad in Montana quarry stone, the Rumford fireplace is the central focal point of the living room. An open ceiling in the living area allows radiant and convection heat to move up to the sleeping and loft areas above. Kitchen cabinets and millwork are composed of stained white oak and teak. The kitchen and bath tiled areas incorporate radiant subfloors. A high-efficiency heat pump/forced air system warms the house with a wood stove in the basement used for supplemental heating.

Situated on a picturesque ridge offering a panoramic view of the Palouse Range, the Wallen Road residence was designed to directly reflect its region's character and materials. The home itself was oriented to afford stunning views and southern exposure to the hills and forest below. While also designed in a 4'-0" grid to minimize construction waste, locally sourced products were utilized to sustain and honor the region. The residence is clad in locally salvaged barn siding and utilizes reclaimed VGDF boards for flooring and wall paneling. The green roof atop the residence's garage minimizes the disturbance of native grasses and lauds the natural habitat where the building sits by serving as an additional habitat where native grass species can thrive.

Engineer - Structural: Core Engineering
General Contractor: Sprenger Construction Inc.
Landscape Architect: DKMullin Architects
Lighting Design: DKMullin Architects ☼





Tapped — DKMullin Architects

Located on the newly revitalized Main Street, this project is a centrally located gastropub within the Moscow community. The taphouse sought a refined yet rustic design that would honor the building's past, located in the historic O'Connor Building built in 1953 and listed on the National Historic Register. Offering 25 rotating regional craft beers, local ciders and 10 wine variations on tap, it imbibes the character of the surrounding wheat-filled farmland of the Palouse hills. The project's main function is a brewpub, and the U-shaped bar was engineered within this narrow space to face toward Main Street to ensure that passersby could see the large tap display within.

Retaining as much of the building's existing structure and character as possible dictated the design direction. Most of the monies budgeted for the build-out were consumed by the kitchen equipment costs and the upgraded roof structure needed to support the rooftop units, making it imperative to use much of the preexisting space's materials for the sake of cost savings.

The existing concrete storefront is wrapped with rough-sawn cedar rain-screen siding in warm tones. Fourteen linear feet of operable storefront glazing opens up onto the Main Street thoroughfare. The original interior brick and terra cotta tile walls around the restaurant's perimeter are exposed and sandblasted to restore their beauty.

Concrete structural columns and bare steel joists are exposed, accented by rough-sawn recycled wood cladding salvaged from local dismantled barns. Original concrete floors are cleaned and polished for an updated

appearance. The U-shaped bar is clad in locally salvaged wood and illuminated by Edison lighting.

The bar top was made of poured and polished concrete with bare steel edging and details. Every facet of the design had to be carefully coordinated, as the design's technical aspects required the use of every 1/4" of free space available.

These existing elements were accented by abundant reclaimed wood throughout the space, as seen in the soffit above, the main-bar cladding, the perimeter wall accents, and the restaurant's seating elements. As with the locally sourced fare and drinks, the wood cladding used in much of the space was sourced from dilapidated barns in the area and given new life.

The restaurant's rustic, reclaimed nature offers its customers a singular Palouse experience in conjunction with the locally sourced libations and fare. This intent is expressed in the design, giving patrons an equally unique experience, "tapping into" and incorporating the natural materials of the Palouse's gently decaying farmhouses with a modern flair. 🌿



Boise Fire Station 8 — Cole Architects



This new fire station, located at the street edge, commands a strong presence from the road. Despite the site's limitations, the result is a pedestrian-friendly and durable urban design. The new station reflects the City of Boise's desire to provide a technically advanced, modern, and sustainably designed station for this location. Station 8 was conceived using the LEED v4 performance metric and will achieve a silver certification level and follow the city's Green Building Code sustainable guidelines.

Due to the site's limitations and a desire to provide a more urban design and pedestrian-friendly solution, the building was located at the street edge, resulting in the parking lot being screened by the building and a strong street presence. The station was constructed using a steel-frame system with masonry cladding and steel details and accents to maximize durability and reduce long-term maintenance. Interior materials, including polished concrete flooring, were chosen to provide an extra level of durability and ease of maintenance.

Boise's current Fire Chief revealed that Fire Station 8 is his favorite station to operate from — and it is a favorite among Boise's firefighters! He described it as "efficient, comfortable — I wouldn't change anything about the design."

Fire Station 8 exemplifies excellence in design — one that not only includes the exterior skin of the building but all of the facets that make a building well designed: a functional floor plan based on carefully researched program requirements, sustainable, durable and cost-effective materials, landscaping that responds to fire-wise and



sustainable design and incorporates public art, and a design that fits into the context of the neighborhood.

The design for Fire Station 8 is based on direct input from the City of Boise and the local neighborhood and neighborhood association. It encouraged community and stakeholder collaboration (public meetings), provided a more walkable neighborhood, fostered a distinctive community with a strong sense of place (public plaza, public art), re-purposed an existing infill site, adopted compact building patterns (urban infill with efficient use of space), and provided a public plaza and a building based on sustainable practices.

Cole Architects

Principal Designer: Stan Cole 🌟



Cedars Student Housing — Method Studio



This 502-bed, 143,000-SF facility comprises three structures: 5-story student housing, a 6-level 485 stall open parking structure and a 4-story mixed-use/family housing facility. Key objectives included developing an exciting, fresh and urban vibe in a cost-effective design not common for the area. The result respects its roots while offering a unique and urban product to recruit tenants and complement the first development phases. Interiors were designed for both residential spaces — including common areas, fitness center, clubhouse spaces, conference and study spaces, lobbies and administrative areas, and retail/commercial on two levels, including a call center and restaurant.

The project was envisioned to echo its place while looking to the future with a modern aesthetic. Cedar, clerestory windows, modern wood sliding doors and clean, neutral finishes combine within a floorplan that “shifted” units. The shift helped to break up the corridor and layer

in an “urban twist.” The architectural concept played upon its farming heritage while looking to the future with a fresh modern form. Stone and paint accents combine with restrained carpet insets and “front door benches” promote neighborly interaction while demarcating entry. Cedar focus walls were placed at

corridor ends, adding warmth and interest. Key design elements in individual patios included a hammock lounge, turf grass for fun and play, outdoor fireplaces, party lights, fire pits and lounge seating.

Method Studio
Rexburg, Idaho 🌲



Ronald McDonald House — Cole Architects



The new Ronald McDonald House provides a home and support for families with children receiving treatment at local Boise hospitals. The house offers a nurturing environment supported 24 hours a day by the RMH staff, allowing families to stay close to neighboring hospitals and focus on their children. Notably, the project raised over \$15 million with the community's support in just 18 months to help fund the new building's construction.

The project was born out of the previous facility's growing demands and the resulting need to constantly turn families away. The new house triples RMH's previous capacity — with 47 private guest rooms and expanded shared facilities (living rooms, dining room, five kitchens and laundry). Quiet areas for reflection are tucked away for privacy. A children's play area connects to a large outdoor patio and playground. The building celebrates the indoor-outdoor connection by

surrounding a large private courtyard that both staff and guests can enjoy.

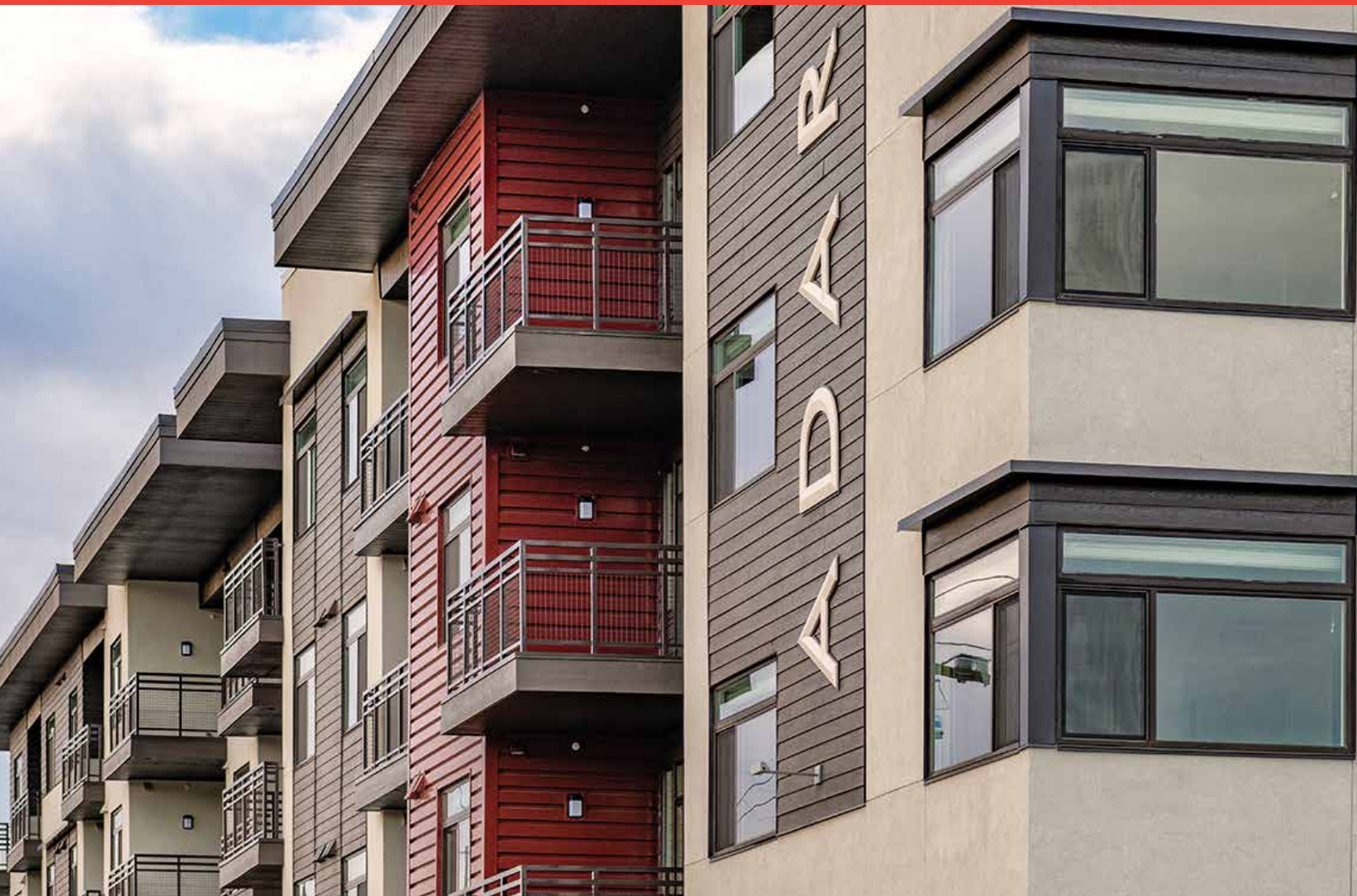
From the project's onset, the client's objectives were to attain a durable and easy-to-maintain facility while emulating a home environment's feeling. The design of the Ronald McDonald House is based on a modern approach to craftsman style architecture — providing a warm, welcoming, nonthreatening and functional environment to the families using the facility, as well as honoring the historic neighborhood.

While the project is the culmination of over 30 years of serving the community, the entire design and building process was achieved in just 18 months, with construction accounting for 11 months of the timeline. Only through careful planning and collaboration between the contractor and the design team could the project expedite its overall schedule successfully.

Cole Architects

Principal Designers: Matt Huffield, Stan Cole, Ian Hoffman 🌟





Adare is a four-story, 134 unit mixed-income housing development contributing to the City's push to redevelop Fairview Avenue and West downtown. The building contains a mix of 1, 2, and 3 bedroom apartments, each with tall ceilings, ample windows and a balcony, plus on-site management and all the amenities expected of a first-rate housing development: community rooms, fitness, roof deck, multiple elevators, laundry rooms, a key-fob security system, and a spacious central courtyard with bike parking, play structures, barbecues and a dog run.

Design: Erstad Architects

Owner/Developer:

Northwest Integrity Housing/Thomas Development/The Pacific Companies
Completed October 2019 🌟



Micron Center for Materials Research — Hummel Architects



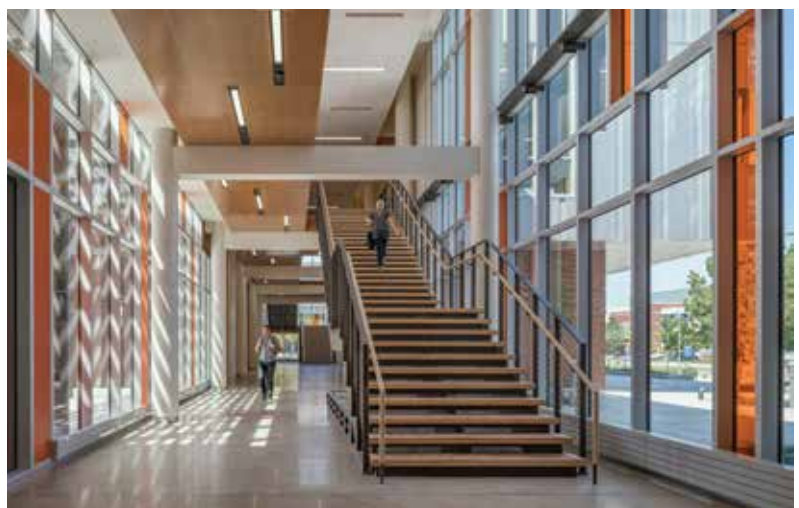
Client: Boise State University
Size: 92,000 SF
Completed: 2020

The Micron Center for Materials Research is a 92,000 SF, world-class academic and research facility located in the heart of Boise State University's campus. The building exemplifies the university's goal to become a leader in academics, research and civic engagement.

The 92,000 SF building features 25 state-of-the-art research labs with room for an additional 17, a 250-seat lecture hall, two 80-person classrooms, and a Student Power Center. The building includes research labs for Materials Chemistry, DNA/Bio-Nano, Thin Films, Applied Electrochemistry, Computational Research, and a shared Instrumentation Lab Suite.

The building is organized in two separate wings, one dedicated to research spaces and one dedicated to teaching spaces. The lab wing is home to research laboratories, teaching laboratories, a workspace for faculty, postdoctoral and graduate students, and support staff to facilitate cutting-edge research.

Architect of Record: Hummel Architects
Associated Architect: Anderson Mason Dale Architects
Structural Engineering: KPFF
Consulting Engineers: MEPT
Consultant: Cator Ruma & Associates
Lab Planning: The Estime Group, Inc.
Landscape Architect: GGLO Design
Audio/Visual Consultant: JSN Enterprises



State Hospital South Secure Skilled Nursing Facility – TreanorHL



This new 59-bed, single-story skilled nursing facility for the State Hospital South replaces an outdated, 82-year-old facility in Blackfoot that did not meet current patient and staff needs. The project's overarching goal was to enhance the quality of life and the quality of care for one of Idaho's most vulnerable populations – those who struggle with chronic mental illness.

The 55,000 SF building provides a warm and secure residential environment with spacious dining and lounging areas, a theater/chapel room, craft room and indoor and outdoor gathering spaces. The building has three patient wings radiating out from the central nurses' station. This allows staff a clear view of all corridors from a central hub to efficiently assist residents and answer call lights.

A large detached gym offers space for physical activities with shared access for other adult and adolescent patients on the state campus. A well-landscaped outdoor physical therapy courtyard allows residents to connect with nature as they work to improve their physical and mental wellness. Secure patio and garden areas offer independence for residents to go outdoors and enjoy beautiful plantings and scenery.

This home-like environment for healing and wellness seamlessly incorporates important safety features like video surveillance,

anti-ligature hardware, security glazing, wireless capabilities to support elopement and wander management systems, and clear sight lines to protect patients and staff. Design decisions promoting connectivity, comfort, and safety ultimately enhance residents' quality of life and efficiency of care for staff in this skilled nursing facility.

Principal designer: TreanorHL





Ash Street Mixed-Use Townhomes — Pivot North Architecture

This public and private partnership with the Capitol City Development Corporation, located along the Pioneer pathway in downtown Boise, will provide 34 quality workforce housing units and connect the residents to the river and downtown. The design pays homage to the historic Hayman House located next door and the history of the neighborhood. The mix of uses included townhomes, flats, retail, open space and pedestrian supported amenities.

*LEED Gold certified

Project Team: Pivot North Architecture, GGLO, Axiom, Musgrove, Visser Building Company



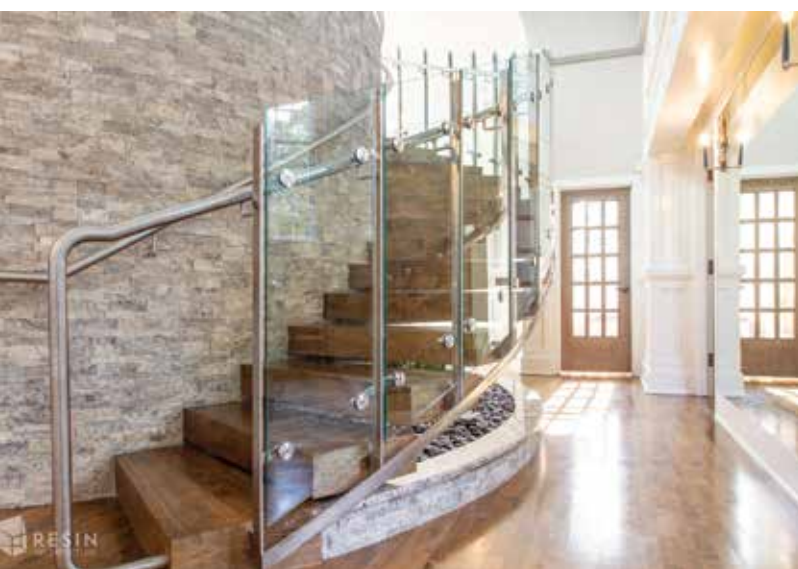


This Wood River Valley project started as a perfect property for an architect. It had several challenging issues that made it undesirable for development and one of a kind:

- The property and building envelope are in the red and blue avalanche zone.
- The setback issues could not be addressed and required two separate variances to allow the development of the residence.
- The property is located inside the Blaine County Mountain Overlay District, and a site alteration and design review approval were required. This ordinance protects the Sun Valley mountains from development and the visual impacts of private property owners' development. The application received a critical review for approval.

This challenging property produced a unique design solution that was also built with a modest budget. 🌟





Historic 3rd Ward Church Building — Resin Architecture

Idaho Falls based architect Graham Whipple of Resin Architecture worked with a local client to restore and rejuvenate the Historic 3rd Ward Church Building in Idaho Falls, Idaho. The goal of the rehabilitation of the former church and community center was to save and restore as much of the building as possible while adapting the building function to a new use, including ensuring compliance with safety codes and ADA requirements. Before starting the project in 2016, this architectural gem had become a target for vandals as it sat and slowly deteriorated while it was unoccupied over the past couple of decades.

The building has four primary levels and over a dozen additional intermediate levels for minor and accessory rooms. The building was completely inaccessible inside and outside from the perspective of ADA before the adaptive reuse. After the project, the building is now approximately 90% ADA accessible.

The building's exterior features had significantly deteriorated due to deferred maintenance, drainage issues and difficult winter conditions. The cast stone elements on the exterior were

almost totally replaced. A few pieces were repaired in place. The masonry exterior was cleaned, repaired, and repointed using methods designed to protect the masonry.

Attention to detail is exemplified throughout the space. Architectural features such as doors and windows were replicated with exacting detail. New items were styled for visual differentiation from historical elements. A lovely staircase was created that leads up to the large skylight above. Nearly all doors throughout the building were salvaged for reuse. New doors have been made to match historic doors. Other details throughout the building were created to harmonize with the building's original architectural features.

This project has returned a prominent, historically important building to its former glory after extensive rehabilitation and significant investment. This project also saved a Harold Sundberg building listed on the National Register and provided an example of reinvestment in Idaho Falls' older neighborhoods. In the process, it restored the faith of adjacent homeowners in their neighborhood's future. 🌟



Pierce Park Elementary School – Slichter|Ugrin/Stack Rock Group



On this project, we worked with the talented team at Slichter | Ugrin Architecture and ESI Construction to create a beautiful and functional replacement school for the Boise School District.

About the Pierce Park Elementary Replacement School

The previous Pierce Park Elementary School was constructed in 1938, was overcrowded and had outlived its practical life span. With multiple portable classrooms and a small combined gymnasium, Pierce Park ranked as the fourth-worst elementary school for Educational Adequacy in the 2016 Facilities Audit and the third-worst elementary school for utilization.

A new school was deemed critical for the neighborhood, addresses overcrowding and safety, and meets modern education standards while honoring its rich history.

Project Design

Boise-based Slichter | Ugrin was selected as the architect for the new school. They brought on Stack Rock Group as their landscape architecture consultant.

Stack Rock Group – Landscape Architecture

Stack Rock Group is a quirky and creative landscape architecture and landscape design firm designing beautiful, sustainable, high-performing commercial and residential landscapes nationwide from Boise, Idaho and Salt Lake City, Utah.

Services Provided By Stack Rock Group

- Schematic landscape design
- Design development
- Landscape construction documents
- Construction administration and observation 🌿





Save the Date!

AIA Idaho Design Awards Conference & Gala

September 24, 2021
Sun Valley, Idaho



AIA



AIA Connects you to the largest,
most influential network of
architecture professionals.

AIA Idaho Firm Profiles

COLE ARCHITECTS



1008 W Main Street
Boise ID 83702
(208) 345-1800
info@colearchitects.com
www.colearchitects.com

Principal

Matt Huffield
Ian Hoffman
Tim Grissom
Stan Cole

Firm Personnel by Discipline

A (6), IA (2), MK (1)

Project Types

1, 2, 3, 5, 6, 7, 8, 9, 11, 12, 13, 15

CUSHING TERRELL



800 West Main Street STE 800
Boise ID 83702
(208) 336-4900
www.cushingterrell.com

Principal

Jason Butler, AIA

Firm Personnel by Discipline

ADM (3), D (12), E (26), ID (5), IA (3), LA (1),
A (21), LD (2), MK (2), O (1) (Boise Office Staff)

Project Types

1-16

ERSTAD ARCHITECTS



310 N 5th Street
Boise ID 83702
(208) 331-9031
info@erstadarchitects.com
www.erstadarchitects.com

Principal

Andrew C. Erstad, AIA

Firm Personnel by Discipline

ADM (2), ID (5), IA (9), A (5)

Project Types

1, 3, 6, 7, 8, 9, 11, 12, 13, 14, 15

SMITH ASSOCIATES P.A.

ARCHITECT JACK SMITH FAIA

P.O. BOX 3000
Ketchum ID 83340
(208) 720-3653
www.jacksmitharchitect.com

Principal

Jack Smith FAIA

Firm Personnel by Discipline

A (1), ADM (1), LA (1), IA (2)

Project Types

1, 2, 3, 8, 10, 12, 13, 14, 15, 16 (Residential)

LOMBARD/CONRAD ARCHITECTS



472 Washington Street
Boise ID 83702
(208) 345-6677
info@lcarch.com
www.lombardconrad.com

Principal

Alexis Townsend
Casey Huse
Ken Gallegos
Mark Heazle
Tom Scofield

Firm Personnel by Discipline

ADM (3), D (5), ID (4), IA, (3), A (14), MK (1)

Project Types

1, 2, 3, 5, 7, 8, 11, 12, 13, 14, 15

TREANORHL, INC.



999 W. Main St. Suite 100
Boise ID 83702
(208) 501-8267
chendershott@treanorhl.com
www.treanorhl.com

Principal

Curtis Hendershott

Firm Personnel by Discipline

ADM (31), A (62), D (29), E (3), ID (6), LA (1),
O (Project Managers) (10)

Project Types

1, 3, 5, 6, 7, 8, 9, 10, 12, 13, 14, 15, 16
(Housing/Mixed Use)

KEY

CODE	Firm Personnel Discipline
ADM	Administrative
CM	Construction Management
D	Drafting
E	Engineers
EST	Estimators
FM	Facility Manager
ID	Interior Design
IA	Intern Architects
LA	Landscape Architects
A	Licensed Architects
LD	Lighting Design
MK	Marketing
UP	Urban Planners
O	Other
CODE	Project Types
1	Corporate
2	Cultural
3	Education
4	Engineering
5	Healthcare
6	Historic Preservation
7	Government
8	Interiors
9	Industrial
10	Landscape Architecture
11	Military
12	Planning
13	Religious
14	Science & Technology
15	Sustainable Design
16	Other (Specified)

Connect with the architecture profession

Network with people and build relationships that will inspire you. More than 200 AIA chapters give you instant access to peers, indispensable connections, and future collaborators who share your love for design.

AIA Idaho Member Directory

Michael Allaire, AIA

310 Willoway Rd.
Hailey ID 83333
(714) 308-7774
mfallaire@gmail.com

Michael C. Alldredge, AIA

234 E. Third S.
Rexburg ID 83440-2233
(208) 313-3866
alldredgec@byui.edu

Lowell W. Alseth, AIA

P.O. Box 6572
Boise ID 83707-6572
(208) 345-8872
lowell@zga.com

Kristin R. Anderson, AIA

Anderson Architecture, P.A.
P.O. Box 1306
Ketchum ID 83340-1306
(208) 726-6054
kristin@andersonARC.com

Peter G. Anderson, AIA

Anderson Architecture, P.A.
P.O. Box 1306
320 First Ave. N., Ste. 201
Ketchum ID 83340
(208) 726-6054
pete@andersonARC.com

Tracy Baker, AIA

6807 W. Waverly Ct.
Boise ID 83704
(208) 870-5935
tredbaker@gmail.com

C. M. Barker, AIA

P.O. Box 2702
Ketchum ID 83340-2702
(208) 720-3690
cmbarker@cox.net

Robert S. Barnes, Assoc. AIA

Booth Architecture, LLC
340 E. Clark St., Ste. A
Pocatello ID 83201
(208) 233-4548
scott@bootharchitecture.com

Jorge Basulto, Assoc. AIA

1821 S. Crimson Rose Ave.
Boise ID 83709-8228
(208) 343-4635
basulto.jorge11@gmail.com

Rebecca A. Behrens, Assoc. AIA

ZGA Architects and Planners, CHTD
408 E. Parkcenter Blvd., Ste. 205
Boise ID 83706
(208) 293-2452
rebecca@zga.com

Kelly Beiser, Assoc. AIA

LKV Architects
305 S. Stapleton St.
Boise ID 83705
kelly@lkvarchitects.com

Ryker M. Belnap, Assoc. AIA

1723 S. Helen St.
Boise ID 83705-3124
(208) 339-5653
rykerbelnap@gmail.com

Aaron Belzer, AIA

P.O. Box 2125
Hailey ID 83333
(719) 244-8038
aaron.j.belzer@gmail.com

Arlin C. Berge, AIA

822 E. Shadow Wood Ln.
Coeur d'Alene ID 83815-5111
(208) 930-4364
arlin@arlinberge.com

Benjamin Bernier, AIA

LCA Architects, P.A.
1221 W. Shoreline Ln.
Boise ID 83702-6870
(208) 345-6677
benb@lcarch.com

Glen E. Berry, AIA

HERA Laboratory Planners
2011 N. Luge Ave.
Eagle ID 83616-5930
(760) 845-8703
glenb@herainc.com

Robert W. Beusan, AIA

Hummel Architects PLLC
2785 N. Bogus Basin Rd.
Boise ID 83702
(208) 343-7523
rbeusan@hummelarch.com

Andrew K. Bick, AIA

P.O. Box 9876
Boise ID 83707-4876
(208) 726-8608
AKBick@gmail.com

Chad Blincoc, AIA

Blincoe Architecture
P.O. Box 4424
Ketchum ID 83340
(208) 720-1325
chad@blincocarchitecture.com

Errin M. Bliss, AIA

Bliss Architecture
P.O. Box 53
Sun Valley ID 83353-0053
(208) 721-7424
errin@blissarchitecture.com

Mandy Boam, AIA

Hummel Architects
2785 N. Bogus Basin Rd.
Boise ID 83702
(208) 343-7523
mboam@hummelarch.com

Timothy W. Boden, AIA

Boden Mountain Architecture LLC
P.O. Box 9
Sandpoint ID 83864-0009
(208) 263-5072
tim@bodenarchitecture.com

Kevin R. Bodily, AIA

NBW Architects, P.A.
P.O. Box 2212
Idaho Falls ID 83403-2212
(208) 522-8779
krb@nbwarchitects.com

Ted L. Booth, AIA

Booth Architecture, LLC
340 E. Clark St., Ste. A
Pocatello ID 83201-6345
(208) 251-5917
ted@bootharchitecture.com



Donald H. Boss, AIA
Boss & Agnew Architects
P.O. Box 6048
320 First Ave. N., Ste. 200
Ketchum ID 83340-6048
(208) 788-6246
don@donbossarchitectaia.com

Brian K. Boyd, AIA
10996 W. Hidden Brook Dr.
Star ID 83669
(208) 830-0625
briboyd@centurylink.net

Jeri Brittin, Assoc. AIA
HDR
412 E. Parkcenter Blvd., Ste. 100
Boise ID 83706-6659
(402) 203-9433
jeri.brittin@hdrinc.com

Christopher M. Broders, Assoc. AIA
530 S. White Cloud Dr.
Boise ID 83709-0859
(801) 755-8954
c_broders@yahoo.com

Brenda L. Brosa, AIA
Lombard Conrad Architects
1221 Shoreline Ln.
Boise ID 83702
(208) 780-0040
brendab@lcarch.com

Joseph H. Bruce, AIA
119 S. 10th St., Apt. 301
Boise ID 83702
(208) 440-1728
joe.h.bruce@gmail.com

Michael R. Brunelle, AIA
Brunelle Architects
P.O. Box 3204
Hailey ID 83333-3204
(208) 589-0771
mike@brunellearchitects.com

Richard B. Bugatsch, AIA
Houston-Bugatsch Architects CHTD
1307 N. 39th St., Ste. 103
Nampa ID 83687-9230
(208) 465-3419
rbugatsch@hbarchitecture.com

Michael A. Bulls, AIA
P.O. Box 5619
Ketchum ID 83340-5619
(208) 720-7974
mbulls@rlb-sv.com

Rebecca F. Bundy, AIA
Rebecca F. Bundy Design
P.O. Box 2313
Ketchum ID 83340
(208) 720-1832
rebecca@rfbundydesign.com

Douglas W. Burdge, AIA
809 Canyon Rd.
Hailey ID 83333
(310) 589-5005
sherry.rou@gmail.com

Casey R. Burke, Assoc. AIA
P.O. Box 327
Sun Valley ID 83353
(406) 697-6240
casey.r.burke@gmail.com

Jason Butler, AIA
Cushing Terrell
800 W. Main St., Ste. 800
Boise ID 83702-5977
(208) 608-2597
jasonbutler@cushingterrell.com

Katie E. Butler, AIA
CSHQ, Inc.
200 W. Broad St.
Boise ID 83702
(208) 869-9316
katie.butler@cshqa.com

Ashley A. Buzzini, Assoc. AIA
4702 Hillcrest View Dr.
Boise ID 83705
(208) 608-1597
Ashleyann.buzzini@gmail.com

Sarah Byers, AIA
3958 S. Sumter Way
Boise ID 83709
(208) 320-1863
brac3134@gmail.com

Meredith Anne Bynum, AIA
2165 S. White Pine Place
Boise ID 83706
(415) 828-1845
meredith.anne.bynum@gmail.com

Thomas M. Calla, AIA
CTA Boise
800 W. Main St., Ste. 800
Boise ID 83702-5977
(208) 577-5609
tomc@ctagroup.com

Sofia Cardoso, Assoc. AIA
2209 N. 13th St., D
Boise ID 83702
(208) 819-4490
card3602@gmail.com

Gregory G. Castellaw, AIA
Castellaw Kom Architects
850 Main St., # 210
Lewiston ID 83501-1864
(208) 746-0183
gcastellaw@ckarchitects.com

Garrett P. Chadwick, AIA
GPC Architects
P.O. Box 330
Driggs ID 83422-0330
(208) 354-8036
gchadwick@gpcarch.com

Craig J. Cherry, Assoc. AIA
1506 S. Manitou Ave.
Boise ID 83706
(208) 493-2657
ccherry@pfbcustomhomes.com

Erik J. Chudy, AIA
1925 N. Larch St.
Boise ID 83706
(702) 882-2903
erik@erikchudy.com

Richard J. Colburn, AIA
H2A Architects, P.A.
420 E. Indiana Ave., Ste. 100
Coeur d'Alene ID 83814-2989
(208) 667-3430
rcolburn@h2aarch.com

Kevin W. Cole, AIA
Architects West, Inc.
210 E. Lakeside Ave.
Coeur d'Alene ID 83814-2833
(208) 667-9402
kevinc@architectswest.com

Stanley A. Cole, AIA
Cole Architects
2552 E. Warm Springs Ave.
Boise ID 83712-8436
(208) 867-9034
stan@colearchitects.net

Brian F. Coleman, AIA
Hummel Architects PLLC
2785 N. Bogus Basin Rd.
Boise ID 83702-0911
(208) 860-9563
bcoleman@hummelarch.com

James D. Coles, AIA
Design West Architects, P.A.
216 S.W. Fifth Ave., Ste. 100
Meridian ID 83642-2996
(208) 888-1768
jcoles@designwestid.com

Kristen A. Colter, AIA
Northridge Architecture
6426 N. Hillsboro Place
Boise ID 83703-2974
(208) 283-2638
kcolter@northridgearchitecture.com

Jay W. Cone, AIA
Jay Cone Architecture
651 El Dorado Dr.
Hailey ID 83333-8566
(208) 578-5226
jccone@jayconearchitecture.com

Douglass W. Cooper, AIA
McKibben & Cooper Architect
519 W. Hays St.
Boise ID 83702-4500
(208) 343-7851
dougcc@mckibbencooper.com

Jennifer Cosgrove, AIA
P.O. Box 5671
Ketchum ID 83340-5671
(323) 270-8761
jen.cosgrove@gmail.com

Richard C. Creason, AIA
Myers Anderson Architects PLLC
122 S. Main St., Ste. 1
Pocatello ID 83204-4985
(208) 479-1234
richard_creason@myers-anderson.com

Greg W. Croft, AIA
3104 Nina Dr.
Idaho Falls ID 83404-7436
(208) 757-5700
gregcroft1@gmail.com

Raymond Crowder, AIA
Crowder Associates
13311 W. Dahlia Dr.
Boise ID 83713-1303
(208) 866-3496
racrow@aol.com

Eddie D. Daniels, AIA
Hummel Architects PLLC
2785 N. Bogus Basin Rd.
Boise ID 83702-0911
(208) 343-7523
edaniels@hummelarch.com

Laura A. Davidson, Assoc. AIA
CSHQA, Inc.
200 W. Broad St.
Boise ID 83702
(208) 343-4635
laura.davidson@cshqa.com

David R. Davies, AIA
CSHQA Inc.
200 W. Broad St.
Boise ID 83702
(208) 343-4635
dave.davies@cshqa.com

J. Brent Davies, AIA
Trenor HL
999 W. Main St., Ste. 100
Boise ID 83702
(208) 501-8203
bdavies@trenorhl.com

Andrew J. Davis, Assoc. AIA
Knit Studios
841 Orchard Ave.
Moscow ID 83843
(208) 410-0402
drewd@knitstudios.com

Mark de Reus, AIA
de Reus Architects, Inc.
P.O. Box 5509, 171 E. Second St.
Ketchum ID 83340
(208) 928-7750
mdereus@dereusarchitects.com

Susan C. Desko, AIA
Architect Susan Desko, AIA
P.O. Box 6496
311 First Ave.
Ketchum ID 83340-6496
(208) 720-5827
sdesko@susandesko.com

Leland Dille, AIA
Design Place, PLLC
275 S. Fifth Ave., Ste. 240
Pocatello ID 83201-6422
(208) 339-5346
designplace1@qwestoffice.net

Michael R. Doty, AIA
Michael Doty Associates, Architects
P.O. Box 2792
371 Washington Ave. N.
Ketchum ID 83340-2792
(208) 726-4228
mike@mda-arc.com

Christopher C. Dwyer, AIA
703 N. 18th St.
Boise ID 83702
(208) 484-2854
ccolindwyer@gmail.com

Richard W. Dykstra, AIA
Holistik Sustainability
7509 W. Colehaven Ave.
Boise ID 83704
(406) 581-6695
richard@holistikustainability.com

Leonard H. Ellis, AIA
142 23rd Ave.
Lewiston ID 83501-3881
(208) 743-6059
lhellis@cablone.net

Andrew C. Erstad, AIA
erstad ARCHITECTS
310 N. Fifth St.
Boise ID 83702-5907
(208) 331-9031
acerstad@erstadarchitects.com

Ryan Erstad, Assoc. AIA
erstad ARCHITECTS
143 W. Thornberry Ct.
Boise ID 83702
(208) 389-9384
rtcerstad@gmail.com

James L. Escobar, AIA
neUdesign Architecture, LLC
725 E. Second St.
Meridian ID 83642-2607
(208) 884-2824
jim@neudesignarch.com

Mike R. Fairchild, AIA
Mike R. Fairchild, Architect
13155 Gail Alan
Donnelly ID 83615-5041
(208) 315-2733
mikefairchild77@gmail.com

Michael Thomas Feeney, AIA
631 20th Ave.
Lewiston ID 83501-3833
(208) 743-1918
michaelf6767@gmail.com

Lizette M. Fife, Assoc. AIA
270 E. 13th St.
Idaho Falls ID 83404
(208) 522-0088
lizettefife55@gmail.com

Scott P. Fischer, AIA
Architects West, Inc.
210 E. Lakeside Ave.
Coeur d'Alene ID 83814-2833
(208) 667-9402
scottf@architectswest.com

Lance H. Fish, AIA
ZGA Architects and Planners, CHTD
408 E. Parkcenter Blvd., Ste. 205
Boise ID 83706-6512
lance@zga.com



Giovanni C. Florenca, Assoc. AIA
1504 S. Loggers Pond Place, Apt. #15
Boise ID 83706
(805) 444-4226
gflorenca@verizon.net

Byron W. Folwell, AIA
Byron W. Folwell, Architect
199 N. Capitol Blvd., Ste. 602
Boise ID 83702
(208) 409-9050
bfolwell@gmail.com

Anna Foster, Executive Director
The American Institute of Architects
Idaho Chapter
(208) 309-2081
www.aiaidaho.com

Scott M. Freeman, AIA
Andersen Construction Company
12552 W. Executive Dr.
Boise ID 83713-5907
(208) 401-5187
kickingwater@cableone.net

Richard T. Gage, AIA
217 Cedar St., Ste. 328
Sandpoint ID 83864-1410
(925) 285-1839
rgage33@gmail.com

Ken L. Gallegos, AIA
Lombard-Conrad Architects, P.C.
1221 W. Shoreline Ln.
Boise ID 83702-6870
(208) 345-6677
kengallegos@lcarch.com

Jonathan L. Gallup, AIA
Resin Architecture
213 12th St.
Idaho Falls ID 83404
(208) 596-8710
jonathan@resinarchitecture.com

Adam D. Garcia, Assoc. AIA
Houston-Bugatsch Architects CHTD
1307 N. 39th St., Ste. 103
Nampa ID 83687-9230
(208) 465-3419
agarcia@hbarchitecture.com

Gabriella Garcia, Assoc. AIA
OEC
623 S. Americana Blvd.
Boise ID 83702
(208) 407-5601
ggabby@live.com

Brian Garrett, AIA
Ontario Association of Architects
2520 Esquire Dr.
Boise ID 83704
(208) 830-7030
brian@oaandd.com

F. D. Gay, AIA
2397 W. 960 S.
Rexburg ID 83440-4732
(208) 206-8685
gayf@byui.edu

Matthew C. Geserick, AIA
948 E. Bergeson St.
Boise ID 83706-5522
(208) 345-6677
m.c.geserick@gmail.com

Douglas L. Gibson, AIA
2566 E. Woods End Ct.
Boise ID 83706-6072
(208) 343-5904
dggroupparch1@gmail.com

Mark Gier, AIA
CSHQA, Inc.
200 W. Broad St.
Boise ID 83702
(208) 343-4635
mark.gier@cshqa.com

James T. Glancey, AIA
Glancey Rockwell & Associates
1257 W. River St., Ste. 110
Boise ID 83702-7028
(208) 853-2028
jglancey@grboise.com

Alexandria A. Goedhart, Assoc. AIA
2061 S. Hudson Ave., Apt. #201
Boise ID 83705
(208) 731-9565
alexandriagoedhart@gmail.com

Kyle Goodyear, Assoc. AIA
6022 Manorfield Dr.
Huntington Beach CA 92648
(208) 627-8188
goodyearkyle@gmail.com

Michael Norman Griffin, AIA
2917 Blueberry Hills Rd. S.
Juneau AK 99801-1987
(208) 449-3419
cdamgriffin@gmail.com

ARCHITECT JACK SMITH FAIA SMITH ASSOCIATES P.A

Smith Associates is an architectural firm offering professional services in architecture, landscape architecture, planning and interior design.

Established in Ketchum Idaho in 1975, the firm has a distinguished reputation for excellence in design and professionalism.

Jack Smith, the President and principal of the firm, holds a doctorate degree in architecture, is certified by the National Council of Architectural Registration Boards (NCARB), is currently a registered architect in 10 states, and is a Fellow of the College of Fellows of the American Institute of Architects.

Recently retired from Montana State University, where he has been a Teaching Professor of Architecture since 2006, he is now committed to full time practice in Idaho.

The recipient of numerous honors and awards, Smith has completed over seventy projects of diverse scope and typologies nationally and internationally.

Contact:

jrs@jsfaia.com
Suite 201 First Street Building, P.O. Box 3000, Ketchum, Idaho 83340
www.jacksmitharchitect.com

Tim Grissom, AIA

Cole Architects
1008 W. Main St.
Boise ID 83702-5705
(208) 345-1800
tim@colearchitects.net

Nikki C. Hadfield, AIA

153 Eighth St.
Idaho Falls ID 83401
(208) 206-7332
nikki.hadfield@outlook.com

Erik R. Hagen, AIA

809 N. 18th St.
Boise ID 83702
(310) 755-5987
mail@erikhagen.com

Bruce T. Haglund, Assoc. AIA

University of Idaho
College of Art & Architecture
875 Perimeter Dr., #2451
Moscow ID 83844-2451
(208) 882-9404
bhaglund@uidaho.edu

Martin A. Hahle, AIA

CSHQA, Inc.
200 W. Broad St.
Boise ID 83702
(208) 343-4635
martin.hahle@cshqa.com

Bryan J. Hallowell, AIA

CTA Boise
800 W. Main St., Ste. 800
Boise ID 83702-5977
(208) 336-4900
bryanhallowell@cushingterrell.com

Leif Hanson, AIA

3365 E. 16th Ave.
Post Falls ID 83854-8936
(208) 660-6663
leif@norsewoodsmith.com

Kent Hanway, AIA

CSHQA, Inc.
514 Americas Way, PMB 14568
Box Elder SD 57719
(208) 859-9757
kent.hanway@cshqa.com

Jesse Hart, Assoc. AIA

2439 N. Birchgrove Ln.
Boise ID 83703
(208) 946-9632
jhart818@gmail.com

Tyler Paul Hash, Assoc. AIA

Lombard Conrad Architects
1221 W. Shoreline Ln.
Boise ID 83702-6870
(208) 345-6677 (364)
thash@lcarch.com

Jeffery L. Hatch, AIA

Hatch Design Architecture
200 W. 36th
Boise ID 83714
(208) 412-9250
hatc7526@gmail.com

Randall C. Haverfield, AIA

Architecture Northwest
224 16th Ave. S
Nampa ID 83651-4348
(208) 467-3377
randy@arcnw.com

Shudan He, Assoc. AIA

342 Taylor Ave., Apt 5
Moscow ID 83843
(208) 699-6265
shudanhe@outlook.com

Mark W. Heazle, AIA

Lombard Conrad Architects
1221 W. Shoreline Ln.
Boise ID 83702-6870
(208) 860-7558
markh@lcarch.com

Eric L. Hedlund, Assoc. AIA

Eric Hedlund Design LLC
P.O. Box 3741
Coeur d'Alene ID 83816-2529
erich@eh-design.net

Timothy Hedrick, AIA

WinCo Foods LLC
650 N. Armstrong Place
Boise ID 83704-0825
(208) 809-1665
hedrickarch@gmail.com

Jessica R. Heggie, AIA

Braintree Development
918 W. Idaho St.
Boise ID 83702
(208) 283-4593
jheggie@braintree-dev.com

Rory C. Heggie, AIA

CSHQA, Inc.
200 W. Broad St.
Boise ID 83702-7635
(305) 509-2617
rory.heggie@gmail.com

Teresa Heitmann, AIA

1012 Viola Ln.
Viola ID 83872
(509) 592-3003
teresahaitmann@gmail.com

John M. Hendricks, AIA

Hendricks Architecture
418 Pine St.
Sandpoint ID 83864-1349
(208) 265-4001
john@hendricksarchitect.com

Larry K. Herres, AIA

2045 Shelmore Way
Leland NC 28451
(208) 691-2354
larrykherresaia@hotmail.com

David Hertel, AIA

1435 E. Shenandoah Dr.
Boise ID 83712-6658
(208) 720-2848
david@dhertel.com

Latecia A. Herzog, AIA

Myers Anderson Architects PLLC
122 S. Main St., Ste. 1
Pocatello ID 83204
(208) 232-3741 (0110)
latecia@myersanderson.com

Collin C. Hill, AIA

CSHQA, Inc.
511 S. Lawrence Ave.
Boise ID 83709
(208) 343-4635
collin.hill@cshqa.com

Zachary T. Hill, AIA

Ecosystems Sciences
3013 N. Bogus Basin Rd.
Boise ID 83702-0917
(208) 871-1686
zthorne@ecosystemsciences.com

Joshua Hoffer, Assoc. AIA

Hummel Architects
246 N. Curlew Dr., #8103
Ammon ID 83401
(208) 850-8949
jhoffer@hummelarch.com

Ian B. Hoffman, AIA

Cole Architects
1008 W. Main St.
Boise ID 83702-5705
(208) 345.1800
ian@colearchitects.net

Kyler R. Hokanson, Assoc. AIA

Method Studio
4117 E. 230 N.
Rigby ID 83442-5707
(208) 995-0141
kyler@method-studio.com

Daniel P. Hollis, AIA

P.O. Box 101
Ketchum ID 83340-0101
(208) 721-7160
danielphollis@gmail.com

Scott P. Hopkins, AIA

CSHQA, Inc.
200 W. Broad St.
Boise ID 83702
(208) 890-9414
scotthopk@gmail.com

Douglas L. Houston, AIA

Houston-Bugatsch Architects CHTD
1307 N. 39th St., Ste. 103
Nampa ID 83687-9230
(208) 866-8729
dhouston@hbarchitecture.com

Joshua E. Howa, AIA

P.O. Box 5456
Twin Falls ID 83303-5456
(208) 841-4524
josh@spotlesswashsolutions.com

Matthew C. Huffield, AIA

Cole Architects
1008 W. Main St.
Boise ID 83702-5705
(208) 401-5251
matt@colearchitects.com

Matthew J. Hummel, AIA

XC Design Studio
1235 E. Hearthstone Dr.
Boise ID 83702
(570) 275-6130
mhummel@xcelerated-concepts.com

Casey B. Huse, AIA

Lombard-Conrad Architects, PC
1221 W. Shoreline Ln.
Boise ID 83702-6870
(208) 695-6186
caseyh@lcarch.com

Theodore L. Isbell, AIA

CSHQA, Inc.
200 W. Broad St.
Boise ID 83702
(208)343-4635
ted.isbell@cshqa.com



Luke J. Ivers, AIA
Hummel Architects PLLC
2785 N. Bogus Basin Rd.
Boise ID 83702-0911
(208) 343-7523
ljivers@hummelarch.com

Ryan Ivie, Assoc. AIA
1112 E. Eighth St.
Moscow ID 83843
(208) 874-3313
ryan.ivie@gmail.com

Janet M. Jarvis, AIA
The Jarvis Group Architects, AIA
P.O. Box 626
511 Sun Valley Rd.
Ketchum ID 83340-0626
(208) 726-4031
janet@jarvis-group.com

Jeremy C. Jeffers, AIA
11119 W. Camas St.
Boise ID 83709-1208
(208) 830-7843
jljeffers@msn.com

Paul Jensen, AIA
JHS Architects
940 Cahina Way
Pocatello ID 83204-4640
(208) 232-4028
paul@jhsarchitects.com

Corey A. Johnson, AIA
2306 N. 30th St.
Boise ID 83703-5622
(208) 577-5624
coreyj@ctagroup.com

Ryan M. Johnson, AIA
Architects West, Inc.
210 E. Lakeside Ave.
Coeur d'Alene ID 83814
(208) 651-8974
ryanj@architectswest.com

Troy F. Johnson, AIA
2870 S. Denali Way
Meridian ID 83642
(703) 232-9669
troyjohnson123@hotmail.com

Blaine O. Johnston, AIA
6138 N. Demille Ave.
Meridian ID 83646-7299
(208) 861-5264
bjohnston_aia@hotmail.com

Michael A. Joseph, AIA
The Architects Office
6591 N. Lonicera Way
Meridian ID 83646
michael@taoidaho.com

Gregory Kaslo, AIA
Gregory Kaslo Architects
1301 S. Vista Ave., Ste. 101
Boise ID 83705-2501
(208) 345-3505
gkaslo@rmci.net

Dana A. Kauffman, AIA
Insight Architects
13447 W. Elmspring Dr.
Boise ID 83713-1322
(208) 869-3720
dana@insightarchitects.com

Margie A. Kennedy, AIA
1937 E. Cypress Point Dr.
Eagle ID 83616-5372
(208) 447-7973
margiekennedy3@aol.com

Caitlin J. Kessler, Assoc. AIA
erstad ARCHITECTS
310 N. Fifth St.
Boise ID 83702-5907
(480) 313-1530
caitlin@erstadarchitects.com

Travis J. Killmer, Assoc. AIA
Williams Partners Architects
120 Second Ave. North, Ste. 102
Ketchum ID 83340-4373
(208) 726-0110
travis@williams-partners.com

Trent J. Koci, AIA
BRS Architects
1010 S. Allante Place, Ste. 100
Boise ID 83709-1660
(208) 870-4268
trent@brsarchitects.com

James M. Koenig, AIA
Babcock Designs
5239 S. Latigo Dr.
Boise ID 83709-5869
(208) 991-8171
jamie@babcockdesign.com

Laurance H. Kom, AIA
Castellaw Kom Architects
850 Main St., #210
Lewiston ID 83501-1864
(208) 818-4846
lkom@ckarchitects.com

Katrina Kulm, AIA
erstad ARCHITECTS
310 N. Fifth St.
Boise ID 83702-5907
(208) 331-9031 (2033)
katrinakulm@gmail.com

Troy L. Lachcik, Assoc. AIA
1079 S. Don Vincent Ln.
Eagle ID 83616
(208) 908-9739
landonarchitecture@gmail.com

Andrew J. Lauda, AIA
Hummel Architects PLLC
2785 N. Bogus Basin Rd.
Boise ID 83702-0911
(208) 539-2057
alauda@hummelarch.com

R. Craig Lawrence, AIA
Craig Lawrence AIA, Architecture
P.O. Box 2662
Ketchum ID 83340-2662
(208) 720-5372
clawrenceaia@msn.com

Benjamin H. Ledford, AIA
Myers Anderson Architects
122 S. Main St., Ste. 1
Pocatello ID 83204
(208) 220-6013
ben@myersanderson.com

Jeffrey A. Lemmon, AIA
JL Design Build PLLC
720 E. Lakeside Ave.
Coeur d'Alene ID 83814
(208) 860-7215
jef@jl-db.com

Thomas P. Lennon, AIA
erstad ARCHITECTS
310 N. Fifth St.
Boise ID 83702-5907
(208) 331-9031 (2034)
tlennon@erstadarchitects.com

Michelle C. Leonard, Assoc. AIA
7579 Baron Ln.
Boise ID 83714
michelle.leonard@ymail.com

Zacharia L. Lester, AIA
3108 N. Winsome Rd.
Boise ID 83702-0950
(208) 830-5549
zandklester@gmail.com

Yi-Chang Liao, AIA
Hummel Architects PLLC
2785 N. Bogus Basin Rd.
Boise ID 83702-0911
(208) 343-7523
yliao@hummelarch.com

Jeffrey Likes, AIA
ALC Architecture
1119 State, Ste. 120
Eagle ID 83616-6028
(208) 941-7261
jeff@alcarchitecture.com

Scott R. Lloyd, AIA
JHS Architects
125 N. Garfield Ave.
Pocatello ID 83201
(208) 232-1223
scott@jhsarchitects.com

Ernest J. Lombard, FAIA
Ancelle Development Inc.
3590 N. Ballantyne Ln.
Eagle ID 83616-2438
(208) 863-9777
elombard@q.com

Lindsey Love, Assoc. AIA, NCARB
Love Schack Architecture
P.O. Box 1181
Driggs ID 83422-1181
(505) 577-4266
llove@loveschack.com

Rene J. Lusser, Assoc. AIA
Better By Design
P.O. Box 652
Driggs ID 83422-0652
(208) 354-2796
rnclusser@silverstar.com

Timothy P. Lynch, AIA
My Architect, LLC.
504 Main St., Ste. 480
Lewiston ID 83501-1806
(208) 743-5902
tim.lynch@myarchitectaia.com

Priya Madabhusi Raman, AIA
Lombard Conrad Architects
1221 Shoreline Ln.
Boise ID 83702
(208) 345-6677
priyar@lcarch.com

Paul D. Marcolina, AIA
Micron Technology, Inc.
8000 S. Federal Way, Stop 602
Boise ID 83716-9632
(208) 871-1061
pdmarcholina@micron.com

Kathryn Marek, AIA
KM Architectural Consulting
275 Windswept Court
Naples ID 83847
(213) 503-2064
kmarchconsult@earthlink.net

James A. Marsh, AIA
CSHQA, Inc.
200 W. Broad St.
Boise ID 83702-7635
(208) 429-4049
james.marsh@cshqa.com

Scott A. Marshall, AIA
Straightline, PLLC
11467 W. Raul St.
Boise ID 83709-7380
(208) 890-9364
scott@straightline.biz

William Allen Matter, AIA
Matter Architecture
P.O. Box 50146
Boise ID 83705-0963
(208) 342-2290
bill@matterarchitecture.com

Charles A. Matthews, AIA
neUdesign Architecture
725 E. Second St.
Meridian ID 83642
(661) 713-0599
charlesmatthews777@yahoo.com

Paul Matthews, AIA
Paul Matthews Architects
P.O. Box 794
8052 W. Main St., Ste. 201
Rathdrum ID 83858-4916
(208) 687-0300
pmarchitects@frontier.com

Michael D. Mattias, AIA
Afterhours Design, P.A.
109 S. Fourth St.
Bellevue ID 83313-6038
(208) 720-3568
mikeahdesign@gmail.com

John D. Maulin, AIA
CSHQA, Inc.
200 W. Broad St.
Boise ID 83702
(208) 343-4635
john.maulin@cshqa.com

Rietta McCain, AIA
P.O. Box 271
6700 N. Linder Rd., Ste. 156
Meridian ID 83646
(408) 386-9122
rietta@zarquan.com

Crystal D. McColly, AIA
Cole Architects
4868 Riverfront Place
Garden City ID 83714
(208) 731-9031
crystal@colearchitects.net

Greg McCracken, AIA
BLRB Architects
595 Lawrence Dr.
Clarkston WA 99403
(509) 863-1355
gmccracken@blrb.com

William Bertram McCroskey, AIA
1960 N. Lakes Place, #165
Meridian ID 83646-5939
(208) 939-1891

Lina M. McDonald, AIA
RGU Architecture
1015 Alder Ave.
Lewiston ID 83501
(509) 553-4179
lina@rguarchitecture.net

Brent A. McFarland, AIA
JRW & Associates, PLLC
1152 Bond Ave.
Rexburg ID 83440-3501
(208) 359-2309
bmcfarland@jrw.com

Ian J. McLaughlin, AIA
5206 N. Sunderland Dr.
Boise ID 83704
(913) 515-6667
imclaughlin30@gmail.com

James D. McLaughlin, AIA
McLaughlin & Associates
P.O. Box 479
Sun Valley ID 83353-0479
(208) 720-5904
jim@mclaughlinarchitects.com

Dannii M. McLin, Assoc. AIA
Insight Architects
2238 Broadway Ave.
Boise ID 83706
(208) 338-9080 (111)
dannii@insightarchitects.com

Leah N. McMillan, AIA
Millcreek Architecture
3050 W. Hester St.
Boise ID 83702
(503) 580-4171
leah@millcreekarch.com

Phillip G. Mead, AIA
113 N. Jefferson St.
Moscow ID 83843-2832
(208) 596-5861
pmead@uidaho.edu

Yolanda Melchert, AIA
P.O. Box 1983
Boise ID 83701-1983
(208) 409-5975
ymelchert@yahoo.com

Monte J. Miller, AIA
Miller Stauffer Architects, P.A.
601 E. Front Ave., Ste. 201
Coeur d'Alene ID 83814-5169
(208) 664-1773
ashley@millerstauffer.com

Timothy W. Miller, AIA
CTA Group
800 W. Main St., Ste. 800
Boise ID 83702-5977
(208) 336-4900
timm@ctagroup.com

Benjamin W. Millett, AIA
CSHQA, Inc.
200 W. Broad St.
Boise ID 83702
(208) 343-4635
afrikanmillett@gmail.com

Cameron A. Minor, AIA
Migration Studios
P.O. Box 98
Bliss ID 83314
(208) 720-6567
cam@migrationstudios.com

Shelli R. Mittmann, AIA
Mittman Architect
730 N. Fourth St.
Coeur d'Alene ID 83814
(208) 699-9966
shelli@mittmannarchitect.com

Brenda Moczygemba, AIA
P.O. Box 4578
Ketchum ID 83340
(970) 306-5110
bmoczy@gmail.com

Jennifer Mohr, AIA
1349 S. Division Ave.
Boise ID 83706
(208) 985-4058
jnnfrdstewart@gmail.com

Daniel K. Mullin, AIA
Daniel K. Mullin Architects, Inc.
517 S. Main St.
Moscow ID 83843-2917
(208) 892-8433
daniel@dkmullin.com

Jerry Thomas Myers, AIA
Myers Anderson Architects
122 S. Main St., Ste. 1
Pocatello ID 83204-4985
(208) 232-3741
jerry@myersanderson.com

Eric Newton, AIA
2917 N. Bogus Basin Rd.
Boise ID 83702
ericnewt88@gmail.com

Geoff L. Nielson, AIA
NBW Architects P.A.
990 John Adams Pkwy.
Idaho Falls ID 83401-4049
(208) 522-8779
gln@nbwarchitects.com

Patrizia Morgan Norberg, AIA
CSHQA, Inc.
200 W. Broad St.
Boise ID 83702
(208) 343-4635
patrizia.norberg@cshqa.com

Toby J. Norskog, Assoc. AIA
LKV Architects
2400 E. Riverwalk Dr.
Boise ID 83706-5462
(208) 908-8217
toby@lkvarchitects.com

Nicholas Oelrich, Assoc. AIA
3007 W. Bella St.
Boise ID 83703
(208) 371-5074
ncoelrich@gmail.com

Roger D. Olson, AIA
312 N. First St.
Geneva IL 60134-1429
(208) 726-8755
rogero@sunvalley.net

Oluwabukola R. Opatola, Assoc. AIA
3700 Casa Verde St., Apt. 3415
San Jose CA 95134-3345
(208) 596-3311
ruthopatola@gmail.com

Ariah D. Orr, Assoc. AIA
1495 S. Tech Ln., Apt i202
Meridian ID 83642
(208) 615-3701
ariahd20@gmail.com



Gregg Ostrow, AIA
201 E. Louisa St.
Boise ID 83712-8236
(208) 866-3168
geo@greggostrow.com

James M. Otradosky, AIA
CSHQA, Inc.
200 W. Broad St.
Boise ID 83702-7635
(208) 429-4177
jim.otradosky@cshqa.com

Marc Christopher Pange, AIA
144 N. 400 W.
Blackfoot ID 83221-5635
(760) 774-3339
mpange1919@yahoo.com

Geoffrey Parks, AIA
GGLO
1199 Shoreline Dr., Ste. 290
Boise ID 83702
(405) 245-9561
gparks@gglo.com

Stephen M. Pavlick, AIA
Insight Architects
2238 S. Broadway Ave.
Boise ID 83706-4618
(208) 338-9080
steve@insightarchitects.com

Scott A. Payne, AIA
Farmer Payne Architects LLC
P.O. Box 869
Ketchum ID 83340-0869
(318) 990-2049
scott@farmerpaynearchitects.com

Kris L. Peterson, Assoc. AIA
erstad ARCHITECTS
1800 N. Fry St.
Boise ID 83704
(678) 733-0192
kris@erstadarchitects.com

Russ Phillips, AIA
Insight Architects
1744 S. Londoner Ave.
Boise ID 83706-3908
(208) 344-7455
russ@insightarchitects.com

Antonio Plascencia-Lemus, Assoc. AIA
508 N. Atlantic St.
Boise ID 83706
(208) 250-9471
hamlet2800@outlook.com

Bruce Poe, AIA
Modus Architecture Collaborative
P.O. Box 7662
Boise ID 83707-1662
(208) 331-3200
bp@gotomodus.com

Ronald Cesar E. Polintan, Assoc. AIA
LKV Architects
2400 E. Riverwalk Dr.
Boise ID 83706-5462
(208) 336-3443
ron@lkvarchitects.com

Andrew V. Porth, AIA
Porth Architects
1631 E. Holly St.
Boise ID 83712-8357
(406) 446-1966
andrew@porth.com

Jeremy N. Putman, AIA
neUdesign Architecture, LLC
725 E. Second St.
Meridian ID 83642-2607
(208) 884-2824
jeremy@neudesignarch.com

Mark R. Pynn, AIA
Mark Pynn Architect LLC
P.O. Box 754
Ketchum ID 83340-0754
(208) 622-4656
mpynn@sunvalleyarchitect.com

Ashley S. Quick, AIA
Hg⁸⁰ Architecture
1011 E. Greenwood Cir.
Boise ID 83706
(303) 475-4664
ashley@hg80architecture.com

Nicole C. Ramey, AIA
Medici Architects
P.O. Box 1931
Ketchum ID 83340-1931
(208) 721-0194
nicole@mediciarchitects.com

Eric P. Reiser, Assoc. AIA
GPC Architects
P.O. Box 330
18 N. Main St., Ste. 200
Driggs ID 83422
(208) 709-8649
ereiser@gpcarch.com

John P. Reseigh, AIA
Jacobs
999 W. Main St., Ste. 1200
Boise ID 83702
(208) 440-5323
john.reseigh@jacobs.com

Aurora A. Riopelle, AIA
LCA Architects, P.A.
1221 W. Shoreline Ln.
Boise ID 83702-6870
(208) 345-6677
aurorar@lcarch.com

Brian J. Riopelle, AIA
Hummel Architects PLLC
2785 N. Bogus Basin Rd.
Boise ID 83702-0911
(208) 343-7523
briopelle@hummelarch.com

Thomas B. Rixon, AIA
P.O. Box 3462
Ketchum ID 83340-3462
(208) 726-5608
buffalo@rlb-sv.com

Scott D. Roberts, AIA
Cushing Terrell
1041 Steeple View Dr.
Eagle ID 83616
(208) 830-9229
scottroberts@cushingterrell.com

Peter H. Rockwell, AIA
Glancey Rockwell & Associates, Inc.
1257 W. River St., Ste. 110
Boise ID 83702
(208) 345-1718
prockwell@grboise.com

Julie A. Romig, AIA
3117 W. Bellomy Ln.
Boise ID 83703
(208) 861-6140
julieromig@gmail.com

Gina Rossi, AIA
GGLO
1199 Shoreline Dr., Ste. 290
Boise ID 83702
(814) 571-9128
gkr5011@gmail.com

Marshall S. Rossiter, AIA
P.O. Box 367
Pocatello ID 83204-0367
(208) 251-1967
rossiterarch@aol.com

David Ruby, AIA
12734 W. Roseglen Ct.
Boise ID 83713-1438
(208) 639-6406
david@taoidaho.com

Justin J. Rumpeltes, AIA
H.R. Architects, LLC
P.O. Box 1769
Sun Valley ID 83353-1769
(208) 721-0633
jj@hr-architects.net

James Ruscitto, AIA
Ruscitto/Latham/Blanton Architectura P.A.
P.O. Box 419
Sun Valley ID 83353-0419
(208) 726-5608
sdobias@cox.net

Derek G. Ryan, AIA
P.O. Box 6966
Ketchum ID 83340-6966
(208) 720-4153
dgrarchitect@gmail.com

208-890-3914 | **Eric Holstine** | www.alder.com

ASC
ALDER SALES CORPORATION
— SINCE 1935 —

Space Management • Daylighting Specialists

Modernfold
Skyfold
Smoke Guard
Total Door

Kalwall
Kalwall + Lumira™
Structures Unlimited
Solatube

202-05 East 37th Street, Garden City, ID 83714

Jared Schmidt, AIA
Pivot North Architecture
1101 W. Grove St.
Boise ID 83702
(208) 781-0811
jared@pivotnorthdesign.com

Robert A. Schmidt, AIA
2815 N. Bristlecone
Coeur d'Alene ID 83815
(208) 660-8956
bschmidthaus@gmail.com

Ken Schneider, AIA
Jacobs
2715 W. Teton St.
Boise ID 83705-2460
(208) 385-7437
kenneth.schneider@jacobs.com

Gary W. Schoenfeldt, AIA
214 Gold Mountain Dr.
Sagle ID 83860-8111
(208) 263-7962
garys@mindspring.com

Thomas J. Scofield, AIA
LCA Architects, P.A.
1221 W. Shoreline Ln.
Boise ID 83702-6870
(208) 860-1266
toms@lcarch.com

Stephen Sell, AIA
350 E. Carter St.
Boise ID 83706
(208) 861-8995
cruizer1972@yahoo.com

Catherine M. Sewell, AIA
Platform Architecture Design
1008 S. Johnson St.
Boise ID 83705-2235
(208) 891-9082
csewell@platformarch.com

Brandon Nicholas Sheltroun, AIA
Houston-Bugatsch Architects CHTD
1307 N. 39th St., Ste. 103
Nampa ID 83687-9230
(208) 465-3419
bsheltroun@hbarchitecture.com

Ian Shewring, AIA
LCA Architects
1221 Shoreline Ln.
Boise ID 83702
(208) 631-2188
ians@lcarch.com

N. Reed Shinn, AIA
320 N. Walnut St.
Boise ID 83712-7943
(208) 426-3764

Morgan F. Shoemaker, AIA
MWA, Inc. Architecture – Engineering
P.O. Box 45249
Boise ID 83711
(530) 587-6257
morgan@mwa-truckee.com

R. Keeven Shropshire, AIA
Jensen Hayes Shropshire Architects, P.A.
125 N. Garfield Ave.
Pocatello ID 83204-3123
(208) 232-1223
keeven@jhsarchitects.com

Clint J. Sievers, AIA
Pivot North Architecture
2785 N. Bogus Basin Rd.
Boise ID 83702-0911
(208) 602-1633
clint@pivotnorthdesign.com

Richard F. Sinnard, AIA
733 W. Pickford St.
Meridian ID 83646-4793
(208) 880-8480
rsinnard@cableone.net

Chad Slichter, AIA
Slichter Ugrin Architecture
2815 Alamo Rd.
Boise ID 83704
(208) 830-1458
chads@suarchitecture.com

Jeff Slichter, AIA
1722 Helen St.
Boise ID 83705
(208) 315-2196
jeffs@suarchitecture.com

Craig A. Slocum, AIA
CSHQA, Inc.
200 W. Broad St.
Boise ID 83702-7635
(208) 343-4635
craig.slocum@cshqa.com

Bradley K. Smith, AIA
Ball Ventures Ahlquist
1431 W. Cottonwood Ct.
Boise ID 83702-1404
(208) 841-9449
brad@bvadev.com

Jason D. Smith, AIA
OA+D
210 N. Sixth St.
Boise ID 83702-5969
(208) 949-7850
jason@oaandd.com

Jack Smith, FAIA
Architect Jack Smith FAIA
P.O. Box 3000
Ketchum ID 83340
(208) 720-3653
jrs@jsfaia.com

Gary A. Sorensen, AIA
Pivot North Architecture
1101 W. Grove St.
Boise ID 83702
(208) 631-6864
gary@pivotnorthdesign.com

Michael C. Spangenberg, AIA
P.O. Box 6846
Ketchum ID 83340-6846
(404) 867-0735
calebspang@gmail.com

Connie St. George, AIA
GGLO
735 N. Eastridge Place
Boise ID 83712-7504
(206) 467-5828
cstgeorge@gglo.com

Charles J. Stark, AIA
H2A Architects, P.A.
420 E. Indiana Ave., Ste. 100
Coeur d'Alene ID 83814-2989
(208) 640-6700
cstark@h2aarch.com

Merlin R. Stark, AIA
Stark Architecture
1605 N. 23rd St.
Boise ID 83702-0411
(208) 841-6475
merlin@starkarc.com

James R. Steel, AIA
Steel Architects
242 E. Winterberry Loop
Hailey ID 83333-5188
(206) 491-3232
james@steelarchitects.com

Wesley A. Steele, AIA
Power Engineers
13173 Willis Falls Ct.
Caldwell ID 83607
(208) 871-7176
wes.steele@powereng.com

Diane J. Steinbronn, AIA
3155 S. Saxony
Eagle ID 83616
(208) 863-8105
steinbro@hotmail.com

Cecil G. Stellyes, AIA
24827 107th Ave., SE
Kent WA 98030
(253) 373-0774

Kelsey A. Stenersen, Assoc. AIA
Booth Architecture
960 W. Clark
Pocatello ID 83204
(208) 317-1525
kelsey@bootharchitecture.com

Rebecca L. Stephens, AIA
6222 N. Parque Dr.
Coeur d'Alene ID 83815
(208) 818-3377
accentarchitecture@gmail.com

Joey T. Stevenson, AIA
P.O. Box 1184
Sun Valley ID 83353
(208) 720-3025
stevenson.joey@outlook.com

Richard A. Stewart, Assoc. AIA
Babcock Design
2615 W. Heron St., #1
Boise ID 83702
rick@babcockdesign.com

Scott J. Straubhar, AIA
Hummel Architects PLLC
2785 N. Bogus Basin Rd.
Boise ID 83702-0911
(208) 343-7523
ssstraubhar@hummelarch.com

Patrick Sullivan, AIA
2818 W. Sunset Ave.
Boise ID 83703-5645
(208) 488-1985
sullivanw@cityofnampa.us

Heather A. Susemihl, AIA
McCall Design and Planning Inc.
P.O. Box, 729
121 Commerce St.
McCall ID 83638-4711
(208) 634-5707
heather@mccalldp.com

Deona M. Swager, Assoc. AIA
1184 W. Lee St.
Boise ID 83702
(208) 421-1573
deonaswager@gmail.com



Anthony J. Swanson, Assoc. AIA

LKV Architects
305 S. Stapleton St.
Boise ID 83705
(208) 608-9679
anthony@lkvarchitects.com

Randall P. Syphus, AIA

5702 E. Victory Rd.
Nampa ID 83687-8906
(208) 514-9102
rsyphus.architect@gmail.com

Richard Talboy, AIA

1414 E. Warm Springs Ave.
Boise ID 83712-8027
(208) 573-0662
rdtalboy@gmail.com

Brandon Taylor, AIA

Hummel Architects PLLC
2785 N. Bogus Basin Rd.
Boise ID 83702-0911
btaylor@hummelarch.com

Mark T. Taylor, Assoc. AIA

ZGA Architects & Planners
1664 W. Tully Springs St.
Meridian ID 83646-3749
(208) 695-6286
mark@zga.com

Don TeBeau, AIA

The Architects Office
499 W. Main St.
Boise ID 83702-7244
(208) 639-6407
rob@tebeauarchitecture.com

Mark B. Tersieff, AIA

Mark Tersieff Architects, LLC
4412 Sunnyside Rd.
Nampa ID 83686
(425) 941-0712
mark@plancreatebuild.com

Brent C. Thaete, AIA

10685 Hazelhurst Dr., Ste. B
Houston TX 77043-3261
0118231653 4676
bcthaete@hotmail.com

David P. Thomas, AIA

917 E. Washington St.
Boise ID 83712-7322
(208) 573-6913
david.thomas.arch@gmail.com

Ellie R. Thomas, Assoc. AIA

Lombard Conrad Architects
118 E. Woodvine St.
Boise ID 83706-4320
(208) 345-6677
elliet@lcarch.com

Michael E. Thomas, AIA

3343 S. Norfolk Way
Boise ID 83706-4849
(208) 559-3092
mthomasarchitecture@gmail.com

Brook Thornton, AIA

LKV Architects
2400 E. Riverwalk Dr.
Boise ID 83706-5462
(208) 336-3443
brook@lkvarchitects.com

Wayne E. Thowless, AIA

LKV Architects
4914 W. Bond St.
Boise ID 83706-1712
(208) 336-3443
wayne@lkvarchitects.com

Norman D. Tilley, AIA

798 Campus Dr.
Twin Falls ID 83301-3813
(208) 732-0485
silvrefox@cablone.net

Alexis M. Townsend, AIA

Lombard Conrad Architects
1221 W. Shoreline Ln.
Boise ID 83702-6870
(208) 345-6677
atownsend@lcarch.com

Cory D. Trapp, AIA

Longwell + Trapp Architects PLLC
8382 N. Wayne Dr., Ste. 204
Hayden ID 83835-6028
(208) 772-0503
cory@longwelltrapp.com

C. Edward Trout, AIA

Trout Architects/CHTD
110 N. 27th St., Ste. 101
Boise ID 83702-9702
(208) 344-8646
design@troutarchitects.com

Steven Trout, AIA

Trout Architects/CHTD
2504 W. Kootenai St.
Boise ID 83705
(208) 344-8646
strout@troutarchitects.com

Nathan L. Turner, AIA

3915 W. Miners Farm Ct.
Boise ID 83714
(208) 830-4022
nate@turnerarchphoto.com

Steven C. Turney, AIA

ZGA Architects & Planners
408 E. Parkcenter Blvd., Ste. 205
Boise ID 83706-6512
(208) 345-8872
steve@zga.com

Gregory A. Ugrin, AIA

Slichter | Ugrin Architecture
415 S. 13th St.
Boise ID 83702-6954
(208) 859-3157
gregu@suarchitecture.com

Gene C. Ulmer, AIA

Gene C. Ulmer Architect
1506 S. Secretariat Way
Nampa ID 83686-1354
(208) 899-0874
ulmergc@gmail.com

Marcus E. Valentine, AIA

Architects West, Inc.
210 E. Lakeside Ave.
Coeur d'Alene ID 83814-2833
(208) 755-0747
marcusv@architectswest.com

Amber Van Ocker, AIA

LKV Architects
2400 E. Riverwalk Dr.
Boise ID 83706-5462
(208) 336-3443
amber@lkvarchitects.com

Gretchen V. Wagner, AIA

Scape Design Studio, Inc.
P.O. Box 2640
371 N. Main, Ste. 202
Ketchum ID 83340-2640
(208) 720-9714
gretchen@scapedesignstudio.com

Mark C. Wagner, AIA

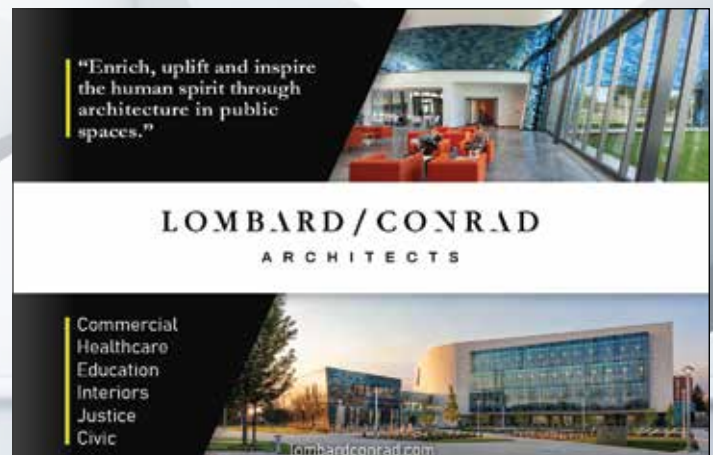
2452 N. Ashgrove Ln.
Boise ID 83703-5566
(208) 409-3845
daedelus11@gmail.com

Glenn E. Walker, AIA

ADP of Boise
9990 W. Mossywood Dr.
Boise ID 83709
(208) 353-0734
gwalker@adpboise.com

Jesse T. Walker, AIA

CSHQA, Inc.
200 W. Broad St.
Boise ID 83702-7635
(208) 861-1449
jesse.walker@cshqa.com



Michael Glenn Ward, AIA
8140 W. Kingsbury Dr.
Middleton ID 83644-5612
(208) 640-1963
michaelwardaia@gmail.com

Danielle N. Weaver, AIA
CSHQA, Inc.
200 W. Broad St.
Boise ID 83702
(208) 867-3414
Danielle.weaver@cshqa.com

Chad D. Weltzin, AIA
728 Santa Paula Place
Boise ID 83712
(970) 309-7595
cweltzin@gmail.com

Scott A. Wendell, AIA
Lombard-Conrad Architects, PC
1221 W. Shoreline Ln.
Boise ID 83702-6870
(208) 345-6677
swendell@lcarch.com

George C. Wheeler, AIA
Madsen, Kneppers & Associates, Inc.
2310 N. Molter Rd., Ste. 110
Liberty Lake WA 99019-8621
(406) 868-9236
george@paradigm3.com

Graham Whipple, AIA
Resin Architecture
305 First St.
Idaho Falls ID 83401-3927
(208) 757-5700
graham@resinarchitecture.com

Benjamin White, AIA
erstad ARCHITECTS
310 N. Fifth St.
Boise ID 83702
(208) 274-3788
bwhite@erstadarchitects.com

Nathan S. Wilde, Assoc. AIA
7249 W. Colonial St., #d202
Boise ID 83709
(307) 413-4689
wilde.nate@hotmail.com

Jeffrey C. Williams, AIA
Williams Partners Architects
P.O. Box 4373
Ketchum ID 83340-4373
(208) 661-3572
jeff@williams-partners.com

Michelle M. Wilson, AIA
MMW A.I.A. PLLC
2900 N. Government Way, Apt. 322
Coeur d'Alene ID 83815-3751
(303) 885-1969
michelle@mmwaia.com

Matthew A. Witt, AIA
406 W. Ashton Dr.
Meridian ID 83646-4420
(208) 941-6131
witt.matt@gmail.com

Ann Wozniak, AIA
Boise State University
1910 University Drive
Boise ID 83725-1280
(208) 602-6970
annwozniak@boisestate.edu

James Wyatt, AIA
NBW Architects, P.A.
P.O. Box 2212
Idaho Falls ID 83403-2212
(208) 589-8927
jhw@nbwarchitects.com

Richard John Youngblood, AIA
Youngblood Architecture
610 W. Hubbard St., Ste. 119
Coeur d'Alene ID 83814-2286
(208) 691-9679
richard@rjyoungblood.com

Scott A. Yribar, AIA
442 W. Thatcher St.
Boise ID 83702-4446
(208) 867-6947
scottyribar@gmail.com

Thomas M. Zabala, AIA
804 E. Riverpark Ln.
Boise ID 83706-4099
(208) 336-0541
thez@cableone.net

Daniel J. Zimmerman, Assoc. AIA
Tait Engineering
5812 N. Collister Dr.
Boise ID 83703
(208) 890-4837
dzimmerman@tait.com

Dion D. Zimmerman, AIA
Design West Architects
215 S.W. Fifth Ave.
Meridian ID 83642
(208) 866-3457
dzimmerman@designwestid.com



Connect with your local community

Get to know your local architecture community through your AIA chapter, which hosts virtual events, conferences, award programs, and volunteer opportunities.

You'll also enhance your personal brand and professional standing by using our members-only designation.

AIA Idaho Professional Affiliate Member Directory

AHJ Engineers

David Haugland
5418 N. Eagle Rd., #140
Boise ID 83713
(208) 323-0199
dhaugland@ahjengineers.com
www.ahjengineers.com

Alder Sales Corporation

Eric Holstine
202-05 East 37th Street
Garden City, ID 83714
(208) 890-3914
www.alders.com

Altenergy Incorporated

Darrell Sweeney
206 W. 36th St.
Garden City ID 83714
(208) 297-7660
dsweeney@altenergyinc.com
www.altenergyinc.com

Anderson, Julian & Hull LLP

Robert Anderson
P.O. Box 7426
Boise ID 83707
(208) 344-5800
randerson@ajhlaw.com
www.ajhlaw.com

Atlas Technical Consultants

Monica Saculles
2791 S. Victory View Way
Boise ID 83709
(208) 376-4748
Monica.Saculles@oneatlas.com
www.oneatlas.com

Axiom PLLC / Structural Engineering

Ashley Thompson
121 N. 9th St., Ste. 401
Boise ID 83702
(208) 639-4520
athompson@axiompllc.com
www.axiompllc.com

Axiom PLLC / Structural Engineering

Matt Blake
121 N. 9th St., Ste. 401
Boise ID 83702
(208) 639-4525
mblake@axiompllc.com
www.axiompllc.com

Basalite Concrete Products, LLC

Cynthia McCaene
1300 E. Franklin
Meridian ID 83642
(208) 639-7168
cynthia.mccaene@basalite.com
www.basalite.com

Benn Brocksome & Associates

Benn Brocksome
P.O. Box 2896
Boise ID 83701
(208) 859-4428
benn@bennbrocksomeandassociates.com
www.bennbrocksomeandassociates.com

BHB Structural

Darren Truchot
390 E. Corporate Dr., #104
Meridian ID 83642
(208) 891-7157
darren.truchot@bhbengineers.com
www.bhbengineers.com

Blueprint Specialties

Will Glasgow
6205 Overland Rd.
Boise ID 83709
(208) 377-0295
will@bpsboise.com
www.digitalimaging-nw.com

Cator, Ruma & Associates, Co.

Randy Munns
420 S. Orchard Street
Boise ID 83705
(208) 999-5021
rmunns@catorruma.com
www.catorruma.com

D&A Door and Specialties

Stewart Jensen
2667 S. Victory View Way
Boise ID 83709
(208) 287-3676
stewart@dadoor.net
www.dadoor.net

D&A Door and Specialties

Shaun Whitney
2667 S. Victory View Way
Boise ID 83709
(208) 287-3676
shaun@dadoor.net
www.dadoor.net

DMA Lighting

Joe Szivan
4720 Emerald St.
Boise ID 83706
(208) 345-4848
jszivan@dmaltg.com
www.dmaltg.com

Foodservice Design Consulting

539 S. Fitness Place, Suite 100
Eagle, ID 83616
(408) 244-3663
joe@myfoodspace.com
www.myfoodspace.com

GeoEngineers

Dan Ciani
3501 W. Elder St.
Boise ID 83705
(208) 433-8098
dciani@geoengineers.com
www.geengineers.com

GLR Engineers

Joe Lane
P.O. Box 6406
Boise ID 83707
(208) 344-2470
joe@glrengineers.com
www.glrengineers.com

Herman Miller

Claudia Day
3678 E. Arbovitae Ct.
Boise ID 83716
(208) 901-4440
claudia_day@hermanmiller.com
www.Hermanmiller.com

ICAP-USA / Insulstone

Les Cullen
300 E. Franklin Rd.
Meridian ID 83642
(208) 895-8557
les@icap-usa.com
www.icap-usa.com

Idaho Power

Sheree Willhite
P.O. Box 70
Boise ID 83707
(208) 388-6717
swillhite@idahopower.com
www.idahopower.com

Kraft Insurance Brokerage, Inc.

Seth Riddell
410 E. Sherman Ave. #211
Coeur d'Alene ID 83814
(208) 292-4937
seth@kraftib.com
www.kraftib.com

Laticrete International

John Gallup
10107 135th St. N.W.
Gig Harbor ID 98329
(203) 499-9235
jgallup@laticrete.com
www.laticrete.com

McClendon Engineering, Inc.

Sarah McClendon
1412 W. Idaho St., Ste. 240
Boise ID 83702
(208) 342-2919
Sarah@McClendonEngineering.com
www.McClendonEngineering.Com

Mullins Acoustics

Earl Mullins
10400 W. Overland Rd #211
Boise ID 83709
(208) 514-6264
earl@mullinsacoustics.com
www.mullinsacoustics.com

Nasland Engineering

Cory Schrack
2865 S. Portside Ave.
Boise ID 83706
(858) 292-7770
corys@nasland.com
www.nasland.com

Neurilink

Greg Bridges
12586 W. Bridger St. Ste 100
Boise, ID 83713
(208) 426-8238
gbridges@neurilink.com
www.neurilink.com

Northwest Engineering Service, Inc. (NWESI)

Jerry Burstedt
9543 W. Emerald St., Ste. 104
Boise ID 83704
(208) 342-1231
jerryb@nwesi.com

OEC Office Environment Company

Eva Nicholes
623 S. Americana Blvd.
Boise ID 83702
(208) 385-0507
enicholes@oecboise.com
www.oecworks.com

Pella Mountain West

Chris DeFonte
1580 E. State St., Ste. 103
Eagle ID 83616
(208) 373-0002
defontec@pellamw.com
www.pella.com

Riley Planning Services

Penelope Constantintikes
P.O. Box 405
Boise ID 83701
(208) 908-1609
penelope@rileyplanning.com
www.rileyplanning.com

Rock Solid Civil

Jim Coslett
270 N. 27th St., Ste. 100
Boise ID 83702
(208) 342-3277
jcoslett@rocksolidcivil.com
www.rocksolidcivil.com

Scott Hedrick Construction

Scott Hedrick
1154 N. Orchard
Boise ID 83706
(208) 345-5800
scott@scotthedrick.com
www.scotthedrick.com

Stack Rock Group, Inc.

Will Howard
404 S. 8th St., Ste. 154
Boise ID 83702
(208) 345-0500
will@stackrockgroup.com
www.stackrockgroup.com

Stapley Engineering

Christopher Merrill
8701 W. Hackamore Dr.
Boise ID 83709
(208) 375-8420
stapleyengr@stapley.net
www.stapley.net

Strata

Dan Gado
8653 Hackamore Drive
Boise ID 83709
(208) 376-8200
dgado@stratageotech.com
www.stratageotech.com

The Hartwell Corporation

Jeremy Kroll
P.O. Box 400
Caldwell ID 83606-0400
(208) 459-1678
jeremy@thehartwellcorp.com
www.thehartwellcorp.com

View Point Windows, Doors and Hardware

6715 W. State St.
Boise ID 83714
(208) 854-1877
gene@vpwindows.com
www.viewpointwindows.com

Willis Supply Corporation

Brian Cobabe
9805 32nd Ave. S
Lakewood WA 98499
(289) 775-5814
Alyssam@4willis.com
www.4willis.com



PROFESSIONAL LIABILITY INSURANCE FOR ARCHITECTS & ENGINEERS

www.aecriskpro.com | (208) 440-7075



This ad was produced with support from the Travelers Companies, Inc. Property casualty coverages offered through the Travelers Indemnity Company and its property casualty affiliates.



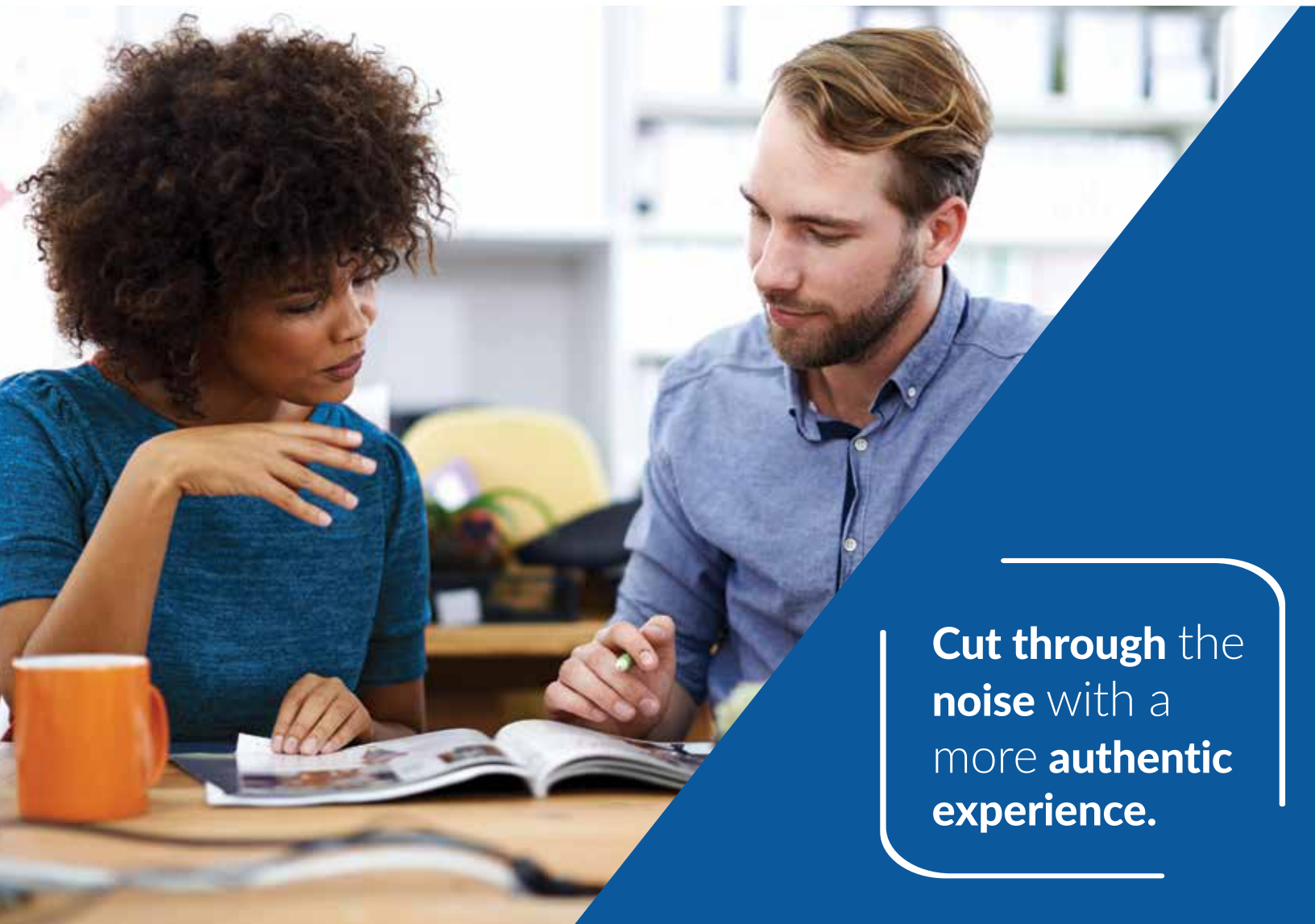


AIA
Idaho

11351 W Trestlewood Street
Boise, ID 83709

PRSRT STD
U.S. POSTAGE
PAID
SALT LAKE CITY, UT
PERMIT NO. 508

This magazine is designed and published by The newsLINK Group, LLC | 855.746.4403



**Cut through the
noise** with a
more **authentic
experience.**

Reach your customers with print.
To advertise in this magazine, contact us today.

THE newsLINK
 **group**

801.676.9722 | 855.747.4003

4049 South Highland Dr.
Holladay, UT 84124

thenewslinkgroup.org
sales@thenewslinkgroup.com