

JANUARY 2026



THE GOLDEN RULE

THE GOLDEN SANDS HOME BUILDERS ASSOCIATION NEWSLETTER

PRESIDENT'S MESSAGE

GSHBA Members:

Happy New Year! I hope everyone enjoyed some down time for the holidays and is ready for another great year in 2026!

We have two new members to welcome to GSHBA. Welcome Alec Anderson from Central Builders and Lukas Eichinger from Golden Eagle Log and Timber Homes. Make sure to introduce yourself to both new members and make them feel welcome when you see them at future meetings.

Next week, Ideal Crane has been gracious enough to host our January event with telehandler training and an open house following. We still have openings for this 3 credit DSPS training. Ideal is relatively new to GSHBA (and Plover) so this open house is a great way to learn about all the services they provide! **The deadline to sign up for the training AND open house is Friday, January 9th.**

We will be hosting an associate night at Springville Sports Barn for our February event. This will be a great way to explain what your business does and how we as members can benefit from that. As a bonus, **we will be giving away one FREE GSHBA membership to an attendee who visits all associate displays during the event.**

The International Builders Show in Orlando, FL kicks off on February 17th. I have been there several times, so I know firsthand the value of this event. If you have any questions on IBS, please reach out to me. I'd love to see more of our members take part in this great event.

As a final note, the Habitat for Humanity representatives attended our last board meeting and talked about some of their upcoming projects for this summer and volunteer opportunities for our members. Watch for more details in future newsletters about volunteer opportunities with Habitat.

Looking forward to a great 2026!



Kurt Bergman, Bergman Builders

(715) 498-5825

office@bergmanbuilders.com

Kurt Bergman

CALENDAR *of* EVENTS

January 13 (Tuesday) - Ideal Crane Open House & Forklift Training / Certification

January 16 - WBA Membership Meeting & President's Installation

January 20 - GSHBA Board Meeting 4:00pm Bergman Builders

February 11 (Wednesday) - GSHBA Associate Night at Springville Sports Barn

February 17-19 - International Builders Show in Orlando FL

March 19th (Thursday) - Build PAC Auction WABA & GSHBA combined event, location TBD

IDEAL CRANE RENTAL Invites GSHBA to an Open House

Date: Tuesday, January 13, 2026

At: Ideal Crane Rental 2430 Plover Rd. Plover, WI

Audience: GSHBA Members & Guests

Telehandler Training & Certification

2:00 pm – 4:30 pm (*operation testing immediately following*)

Join us for a professional forklift training session, concluding with a certificate of completion. The course is called Telehandler Certification and meets the DSPS criteria for 3 continuing education credits and satisfies the OSHA & ANSI standards for certification. It will consist of face to face classroom instruction and practical hands on testing. This is a great opportunity to enhance jobsite safety and meet training requirements. Instructor: Sean Empey / Safety Director at Ideal Crane Rental Inc.

Open House with Hors d'oeuvres & Drinks

5:00 pm – 7:00 pm

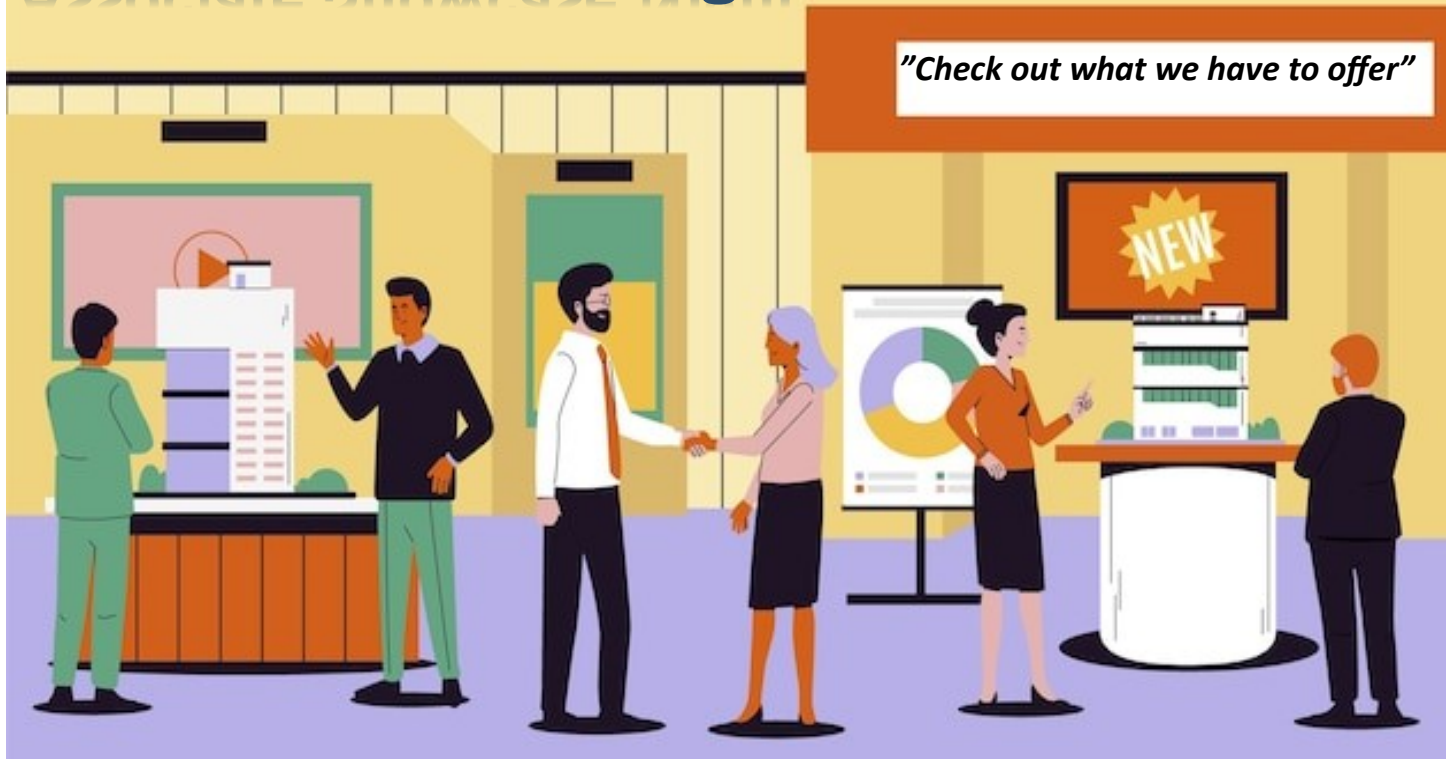
Stop in to tour the facility, meet the Ideal Crane Rental team, and network with fellow GSHBA members. Enjoy complimentary hors d'oeuvres and drinks while you connect and learn more about our equipment and services.

RSVP:

Please RSVP by **January 9** to office@gshba.net

We look forward to welcoming you to Ideal Crane Rental!

Associate Showcase Night



GSHBA Associate Showcase Night

Wednesday, February 11, 2026

5:30 PM – Drinks & Learn About Your Associate Members

7:00 PM – Dinner

Associate Showcase Night is a great opportunity for members to **showcase the products and services** they offer and for attendees to learn more about their fellow GSHBA members and their businesses. This event is also an excellent chance to **invite guests** who are interested in learning more about our members and the value of GSHBA.



We will be holding a drawing to give away **one FREE GSHBA membership** to an attendee who visits **all associate displays** during the event!

Associate Members:

Don't miss this opportunity to **set up a table or display** and share what you do with fellow members. If you would like to participate as an exhibitor, please email **Carrleen** no later than **February 4, 2026**.

We look forward to a fun, informative evening of networking, learning, and connection.

Hope to see you all there!

HAMMER DOWN 5K



MAY 2, 2026 AT ANCHOR BAY

THE 5TH ANNUAL HAMMER DOWN 5K IS COMING!

GSHBA IS EXCITED TO HOST OUR 5TH ANNUAL HAMMER DOWN 5K, AND REGISTRATION WILL BE OPENING LATER THIS MONTH ON OUR WEBSITE.

KEEP AN EYE ON YOUR INBOX IN THE NEXT FEW WEEKS FOR DETAILS ON HOW TO WALK, RUN, VOLUNTEER, OR SPONSOR THIS GREAT COMMUNITY EVENT.



**MARK YOUR
CALENDAR**


GSHBA and WABA Build PAC Auction Night

Thursday, March 19, 2026 - 5:30 pm

Location TBD

We will be hosting an auction along with the Wausau Area Builders Association to raise money for the NAHB Build PAC. We are in the planning stages and are asking for auction donations at this time. If you are willing to put together a basket for the silent auction or have a larger item for the live auction please reach out to office@gshba.net. Check out what Build PAC is below and please consider donating!





What is BUILD-PAC?

BUILD-PAC, NAHB's political arm, helps elect pro-housing, pro-business candidates to federal office and is critical to NAHB's success on Capitol Hill.

Which party does BUILD-PAC support?

BUILD-PAC is bipartisan. It supports pro-housing, pro-business candidates on both sides of the aisle regardless of their party affiliation.

Who can contribute?


Only NAHB members may be solicited to contribute to BUILD-PAC

Does BUILD-PAC accept corporate contributions?

BUILD-PAC can accept only personal funds. It is illegal for a political action committee to contribute corporate donations to congressional candidates.

Who decides which candidates receive BUILD-PAC support?

You! More than 100 NAHB members serve on the BUILD-PAC Board or Trustees, who decide which candidates receive support.



Learn more at buildpac.org or email build-pac@nahb.org

Contributions to BUILD-PAC are completely voluntary. You may choose not to contribute without reprisal. Contributions to BUILD-PAC will be used for political purposes and are not tax deductible for federal income tax purposes. Federal law requires political action committees to report the name, mailing address, occupation and name of employer for each individual whose contribution exceeds \$200 in a calendar year. Foreign nationals cannot contribute to BUILD-PAC

To View the Directory online go to www.gshba.org or Click on this link



We held our **Annual Holiday Party** casino-style last month, and it was a fantastic evening! We had great attendance and an even better time together testing our holiday luck.

Congratulations to our two lucky winners, Gavin Erbes and Jenna Plier, who each walked away with \$100! We also held a special drawing where members earned one entry for every GSHBA event they attended throughout the year. The winner of that drawing was Eric Chojnacki of Freedom Home Builders, who was awarded one year of free GSHBA membership — congratulations, Eric!

Thank you to everyone who attended and helped make the night such a fun and memorable event. It was truly a great way to end the year together.



Welcome New Members!

Central Builders - Alec Anderson

Golden Eagle Log & Timber Homes - Lukas Eichinger

Golden Eagle is family owned and was founded in 1966 by my Grandfather Wally. There are over 6,000 Golden Eagle homes spread across the USA and Canada. Golden Eagle specializes in fully custom luxury log and modern timber homes. We are known for our complete materials package providing a one-stop-shop experience to our homeowners. Our in-house design, engineering, pricing, shipping and customer service teams provide a seamless and exciting home buying experience.



✉ lukas.eichinger@goldeneagleloghomes.com
☎ 866-855-6948 ext. 127 Toll Free
☎ 715-315-6227 direct to desk number (Text/SMS capable)

Lukas Eichinger

Lukas has had a life-long passion for the building industry. Over the past eighteen years, he has gained extensive experience across multiple departments, mastering the intricacies of Golden Eagle's products and processes. His knowledge grew further having personally built two Golden Eagle homes for his growing family of six.

As a third-generation member of his family's business, Lukas is committed to upholding the legacy of Golden Eagle Log & Timber Homes, founded by his grandfather. "My dedication grows every day as a way to honor what my family has built and to ensure our success continues for generations to come. I truly enjoy what I do."

Lukas, his wife Chelsea, and their four daughters—Audrey, Olivia, Elise, and Ada—live in a beautiful Golden Eagle Exposed Beam Timber home. Together, they enjoy spending time outdoors camping, swimming, biking, and taking family walks. "Family is such a special thing to have. I feel truly blessed to help other families create the home of their dreams."

With his extensive knowledge, hands-on experience, and genuine passion for helping others, Lukas is excited to guide you through the process of creating your dream home.

COMMUNITY INSURANCE

715-344-2222 HOME | AUTO | UMBRELLA | BUSINESS | LIFE
www.community-insurance.com



WBA Member Meeting & President's Installation

Friday, January 16, 2026
Lambeau Field - Legends Club
1265 Lombardi Ave Green Bay, WI

12:00PM - Registration for Member Meeting

12:30PM - 1:30PM - Advocacy Group Meeting Guest Speaker: TBD

1:35-2:35PM - Emerging Issues Group Meeting

Don't Fumble Your HR Game: The Playbook for Protecting Your Business

Anne Wettstein; Human Resources Consulting, LLC

Every builder needs a solid HR game plan — because running your business without one is like building a house without blueprints. Learn how to avoid costly mistakes by improving your hiring, documentation, safety, and compliance practices. Discover practical ways to protect your business, coach your people, and strengthen the systems that keep your company running smoothly — even without a full HR department.

2:40PM - 3:40PM - Board of Directors Meeting

Reading the Field: Adapting to Change in Construction

In construction, plans shift — sometimes by choice, sometimes because the play changes mid-game. This panel brings together builders and industry voices to talk openly about how they've adjusted to new challenges, changing conditions, and emerging opportunities. You'll leave with practical insights and fresh ideas to help you stay ahead of what's next.

President's Installation

Andy Selner of Alair Homes believes we stand on the shoulders of those who came before us—and it's our duty to give back. Guided by that mindset, he has led with collaboration, strategic thinking, and a deep commitment to elevating the industry.

As he steps into the role of WBA President, this event celebrates his leadership and calls on all of us to help shape what's next, together.

4:00PM Optional Lambeau Field Tour (30 spots available)

5:00PM Optional Lambeau Field Tour (30 spots available)

5:00PM Registration & Complimentary Cocktail Reception

6:00PM Welcome Address by WBA Executive Director Brad Boycks

6:05PM Installation of Senior Officers

6:30PM Dinner

7:30PM Awards Presentation

8:00PM Entertainment & Post Event Reception

PRICING

Lambeau Field Tour (optional): \$30

Single Ticket: \$135

Half Table: \$540

Lodging

Lodge Kohler

Standard Single King or Double Queen Room: \$169.00

To reserve your room, call 855-407-7346 and reference Reservation #757054. Be sure to mention you are part of the group room block under the name WBA Member Meeting Day & Installation.

To make your reservation online:

Visit: www.lodgekohler.com/group

Group Code: 757054

Reservation deadline:

Rooms must be booked by Tuesday, December 16 at 5:00 PM to receive the group rate.

Register for these events at **www.wisbuild.org**



Rock the Block – Stevens Point, WI

Rock the Block is a neighborhood revitalization program that aims to revitalize low-income neighborhoods within our community by engaging individuals, churches, youth groups, and business partners. By focusing on community-driven efforts, we intend to improve living conditions, enhance neighborhood aesthetics, and foster a sense of unity and pride among residents. This project will empower community members, instill hope, and positively impact on the overall well-being of the community. We would take one low-income neighborhood, in partnership with residents and community members, and make the neighborhood safer and more appealing.

How does it work?

- Identify about 5 low-income families in a geographic area within the Stevens Point area who have a willingness to partner on improving their living conditions and neighborhood aesthetics.
- Projects include exterior painting, siding & window washing, yard decluttering & cleaning, yard maintenance & landscaping, improved exterior lighting, screen replacement, and small exterior home repairs. Project materials will average about
- The homes must be owner occupied and our goal is for families to be below 80% of AMI.

What are the Project Objectives?

- Community Engagement – Engage and involve local residents, churches, youth groups, and business partners to actively participate in neighborhood revitalization efforts.
- Community Engagement – Engage and involve local residents, churches, youth groups, and business partners to actively participate in neighborhood revitalization efforts.
- Housing Improvements – Enhance the physical appearance and safety of homes within the target neighborhood.

Sponsorship Opportunities

- Sponsorship levels of Gold Sponsorship (\$2,500), Silver Sponsorship (\$1,000), and Bronze Sponsorship (\$500).
- Gold and Silver sponsors would have their name and a small logo included on all volunteer t-shirts, varying levels of social media posts on Facebook and HFH-CW website, and recognition at the celebration event.
- Bronze sponsors will include social media posts and recognition at the celebration event.

If you'd like to get involved by volunteering or sponsoring Rock the Block, reach out to Lisa Wolf via email at **wolf.lisa.a@gmail.com** or by phone **(715) 340-9848**.



CUSTOM GROUP TRAINING

Solar Training Academy (PV 320)

Midwest Renewable Energy Association (MREA)
7558 Deer Road, Custer, WI 54423

This package of six MREA courses is ideal for those just entering the solar workforce or preparing to take the NABCEP PV Associate exam. This course package includes: 52 hours of training, textbook, printed course materials, and NABCEP PV Associate Exam.

Class will be held from 9 a.m. to 5 p.m. daily (full attendance is required for credentials).

Join us at our headquarters in Custer, WI, to earn your NABCEP PV Associate Credential. Classes are taught by NABCEP-certified and experienced PV professionals, providing you with the foundational skills to launch or advance your solar career. Upon completing this series, you'll be fully prepared to take the NABCEP PV Associate Exam. Pass the exam, and you've officially earned your credential to advance in the solar industry!



Schedule:

Monday, February 23, 2026	Tuesday, February 24, 2026	Wednesday, February 25, 2026	Thursday, February 26, 2026	Friday, February 27, 2026
Working with Electricity (G 108)	Basic Photovoltaics (PV 101)	PV Site Assessment (PV 201)	PV System Design (PV 202) Day 1	PV System Design (PV 202) Day 2

Monday, March 2, 2026	Tuesday, March 3, 2026
PV Labs & Design Scenarios (PV 304)	PV Exam Prep (PV 220) NABCEP PV Exam

We provide light snacks, coffee, and tea during class. Meals are not provided, but a refrigerator and kitchen are available for students to store and warm up lunches. Area accommodations can be found at www.midwestrenew.org/accommodations

To apply, contact Nicole Stachurski
(715) 422-5011 or nstachurski@fsc-corp.org

Presented by Advance Wisconsin Employment

This program is made available by a grant from the American Rescue Plan Act Coronavirus State and Local Fiscal Recovery Funds. Advance Wisconsin Employment and Forward Service Corp is an equal opportunity employer and service provider.

If you have a disability and need assistance with this information, please dial 7-1-1 for Wisconsin Relay Service. Please contact Nicole Stachurski at (715) 422-5011 or nstachurski@fsc-corp.org to request free of charge information in an alternate format, including a translation to your preferred language. Grant eligibility requirements do apply. First-come, first-served; space is limited to 15 students. \$500 incentive for completion.





2026 NAHB INTERNATIONAL BUILDERS' SHOW®

Feb 17-19
Orlando, FL



REGISTER EARLY & SAVE!

Your local association membership comes with an NAHB Membership and NAHB Members qualify for special registration rates to attend the **2026 NAHB International Builders' Show® (IBS).**



There's no better place to see what's new and what's next for our industry than the Builders' Show.

Exclusive NAHB Member Rates

\$75*
EXPO PASS

See product/technique demos, 1,700+ companies, new products, solutions and trends on the IBS Exhibit Floors.

EXPO+EDUCATION
PASS \$595*

Includes Expo Pass access PLUS 120+ IBS Education sessions covering trends and insights from industry experts.

*NAHB Member pricing valid 10/1/25 - 1/9/26. Visit BuildersShow.com/fees for details. Manufacturer and software provider registrants are not eligible.



Register
& Save

BUILDERSSHOW.COM/WHYIBS

Golden Sands Home Builders Association Scholarships

Applications are available online at gshba.org and DUE MARCH 3, 2026



GSHBA Scholarship of Excellence - \$2,000

This scholarship is available to any eligible student or resident seeking education in the building industry living in GSHBA tri-county area of Adams, Juneau, Portage, Waushara, Waupaca, and Wood counties. The "stipend" will be granted directly to the recipient's school upon verification of enrollment.

Jeff Nygaard Memorial Scholarship - \$1,000

GSHBA sponsors this scholarship in memory of former member Jeff Nygaard. This scholarship will be available to any student or resident in the Portage County area seeking an education in the health care profession or building related industry. This "stipend" will be granted directly to the recipient's school upon verification of enrollment.

The Portage County Bank Scholarship - \$1,000

This scholarship will be available to any student or resident in the Portage County area that is seeking education in the finance/banking profession or building industry. This "stipend" will be granted directly to the recipient's school upon verification of enrollment.

Ryley Hofferber Memorial Scholarship - \$1,000

This is available to a student from Portage or Waupaca County. The award recipient must be planning on entering or enrolled in a degree apprenticeship program or education program in the field of building construction trades. The "stipend" will be granted directly to the recipient's school upon verification of enrollment.

Hammer Down Scholarship - \$1,000

This scholarship is available to any student seeking education in the Building Industry, Health/Promotional Wellnes or Physical Therapy living in Adams, Juneau, Portage, Waushara, Waupaca or Wood County. The "stipend" will be granted directly to the recipient's school upon verification of enrollment.

GSHBA Parade of Homes Scholarship - \$1,000

This scholarship is available to any student seeking education in the Building Industry, Interior Design, Drafting or Marketing fields living in Adams, Juneau, Portage, Waushara, Waupaca or Wood County. The "stipend" will be granted directly to the recipient's school upon verification of enrollment.

Alchemy Concrete Scholarship - \$1,500

This scholarship is available to a student from Amherst High School. The award recipient must be planning on entering or enrolled in a degree apprenticeship program or education program in the field of building construction trades. The "stipend" will be granted directly to the recipient's school upon verification of enrollment.

____ **Freedom Home Builders Scholarship - \$1,000**

Applicants must meet the following criteria:

1. Must have an enlistment contract to join any branch of service.
2. Must be in one of the trades or joining an engineer MOS.

It can be a split if they already did basic training, and they are home to finish high school before going to do second phase of initial entry training.

____ **AgCountry Farm Credit Services Scholarship - \$1,500**

This scholarship will be available to any student seeking education in the finance/banking profession or building industry. This "stipend" will be granted directly to the recipient's school upon verification of enrollment.

____ **Welling Kitchen, Bath & Flooring Scholarship - \$1,000**

This grant is available to any person entering a career related to kitchen, bath and/or floor design or remodeling. Applicants should explain their anticipated career, and how the grant will reduce the barrier to entry. The grant will be issued to the recipient for work-related tools, equipment, or education.

____ **Feltz Lumber - \$1,500**

This scholarship is available to any student seeking education in the Building Industry, Interior Design, Drafting or Marketing fields living in Adams, Juneau, Portage, Waushara, Waupaca or Wood County. The "stipend" will be granted directly to the recipient's school upon verification of enrollment.

____ **Ideal Crane Rental, Inc. Workforce Ambassador Scholarship - \$1,000**

This scholarship is available to any new or continuing full or part time student seeking education at Mid-State Technical College in the Construction Trades or Diesel & Heavy Equipment Technician program. The "stipend" will be granted directly to the recipient's school upon verification of enrollment.

____ **Adams Skilled Trades Scholarship – \$1,200**

This scholarship is available to any student or resident within the GSHBA tri-county area — including Adams, Juneau, Portage, Waushara, Waupaca, and Wood counties — who is planning to enter or is currently enrolled in a degree, apprenticeship, or certification program in the electrical, mechanical, or building construction trades. Preference will be given to applicants pursuing careers in electrical, HVAC, plumbing, or other skilled trades that support residential and light commercial construction. The scholarship award will be paid directly to the recipient's educational institution upon verification of enrollment.

____ **SRS Building Products Scholarship - \$1,000**

This scholarship is available to any student in Portage county that is seeking education in the building industry, drafting or marketing fields. This "stipend" will be granted directly to the recipient's school upon verification of enrollment.

____ **Wirtz & Co Construction \$1,000**

No criteria available at this time.



LOOKING FOR A WINDOW PARTNER? I CAN HELP!

Hi, I'm Brian Jeske. I am a 25 year veteran of Pella Windows and Doors of Wisconsin. My wife and I relocated from the greater Milwaukee area. I am a 5 time Pella Corporation presidents club winner. I work with residential builders, remodelers, architects, and homeowners to help select the right windows and doors for their projects. I take pride in my customer service, detail and accuracy. How can I help you with your project?

Why Pella?

- Rated #1 for Innovation
- Rated #1 for Highest Quality
- The Best Warranty
- Energy Efficiency
- Simply Beautiful
- Superior Performance



**Pella Windows & Doors
of Wisconsin**

Brian Jeske - Sales Representative
Cell: 715-496-4320
bjeske@pellawi.com
www.pellawi.com



Bill to Reform the Platting Process Becomes Law

In early December, Governor Tony Evers signed AB 452, a bill incorporating several WBA-driven reforms to the platting process, into law as [2025 Wisconsin Act 68](#).

Key provisions of 2025 Wisconsin Act 68 are:

Pre-Submission Review and Preliminary Plans

The act requires political subdivisions to provide a subdivider with the opportunity to meet for a nonbinding, pre-submission review. It also allows subdividers to submit preliminary plans and reports

regarding water, sewer, road cross-sections, grading stormwater, soil testing, landscaping, and street

lighting for review. A political subdivision cannot reject preliminary plans on the basis that the plans are preliminary and may approve preliminary plans with written conditions.

Installation of Public Improvements

Under current law, the political subdivision may require the subdivider to make and install all public improvements reasonably necessary or provide security to ensure the subdivider will make the improvements within a reasonable time. The act instead allows political subdivisions to require the subdivider to agree to install public improvements reasonably necessary and provide financial security to ensure the improvements are made within a reasonable time after the plat is approved. It also specifies that the political subdivision may not require the installation or acceptance of public improvements as a condition to submitting, reviewing, approving, or recording a preliminary or final plat. Additionally, any outstanding local building permits for each home site on the plat that meet the requirements of applicable building codes, zoning ordinances, and other regulations must be re-

leased

upon the substantial completion of the public improvements, and cannot be withheld solely due to the status of the public improvements.

Recording Plat With Register of Deeds

Lastly, the act states that a preliminary plat that has obtained the required approvals or is deemed approved is entitled to be recorded with the register of deeds. The approving authority of the body that has the authority to review the plat must make a certification of the approval on the face of the plat within 10 days of the subdivider submitting the plat with all the required certificates and affidavits.

Thank you to the WBA members who served on the subcommittee to come up with the items contained in 2025 Wisconsin Act 68 and the lead authors of the legislation, [Representative Rob Kreibich](#) (R-New Richmond) and [Senator Dan Feyen](#) (R-Fond du Lac).

Delayed Effective Date of Commercial Building Code Vetoed

After receiving a voice vote in the State Assembly and a bipartisan vote on final passage in the State Senate, Governor Evers vetoed Assembly Bill 450 (AB 450) on Friday, December 5.

AB 450 would have delayed the effective date of the changes to the commercial building code until April 1, 2026.

Governor Evers released a statement on the veto saying, “I am vetoing this bill in its entirety because I object to the further unnecessary delay in implementing new building standards that will benefit Wisconsin communities. The Department of Safety and Professional Services, in consultation with industry stakeholders and experts, has already delayed enforcement of the new building code until November 1, 2025. Additionally, JCRAR unconstitutionally obstructed this rule from taking effect for years, and the department was only able to implement it after lengthy litigation. This bill would not only create confusion for developers with current building projects under review but would also further delay the implementation of new safety and energy efficiency standards that have been already widely adopted. The department has and will continue to work with building professionals throughout the state to ensure proper understanding and compliance with the new building commercial code.”

WBA has started discussion with other interested parties to compile a list of items in the code that need to be revised that we will then be sharing with the Department of Safety and Professional Services for consideration. Please contact Brad Boycks (bboycks@wisbuild.org) to share problematic provisions of the recently passed commercial building code.

From NAHB: House Panel Approves Major Housing Package

In a move that provides momentum for Congress to enact major housing legislation in early 2026, the House Financial Services Committee this week approved the Housing for the 21st Century Act. This bipartisan housing package — introduced by committee Chairman French Hill (R-Ark.), Ranking Member Maxine Waters (D-Calif.), Rep. Mike Flood (R-Neb.), and Rep. Emanuel Cleaver (D-Mo.) — takes much-needed steps toward addressing our nation’s critical lack of housing.

The legislation contains key provisions related to land use and zoning, regulatory reforms and financing tools. It is the House response to the ROAD to Housing Act, legislation passed by the Senate this fall that includes favorable provisions aimed at zoning and land-use policies, and rural and multifamily housing that will stimulate construction of sorely needed housing.

Of note to the housing community, the Housing for the 21st Century Act would:

- Direct the Department of Housing and Urban Development to develop best practices with key stakeholders, such as home builders and developers, to provide state and local governments with an array of options to increase housing production.
- Remove regulatory burdens for infill and mid-sized construction and eliminate time-consuming duplicative review processes under the National Environmental Policy Act.
- Provide reforms to the HOME Investment Partnerships Program that will help lower construction costs by allowing builders to source materials from any vendor that provides the best product and pricing.
- Raise multifamily loan limits and index them to the Price Deflator Index of Multifamily Construction. This will better reflect the true cost of construction and help stimulate new apartment construction by making these loans more financially feasible to use.

In addition, the House Financial Services Committee approved the NFIP Extension Act of 2026, which would extend the National Flood Insurance Program’s financing and program through Sept. 30, 2026, and applies this extension retroactively to Sept. 30, 2025.

NAHB will continue to work with republican and democratic lawmakers in both chambers of Congress to pass a bicameral, bipartisan major housing package in early 2026 to reduce obstacles to help builders build more attainable, affordable housing.