

AI & Data Work Experience Programme

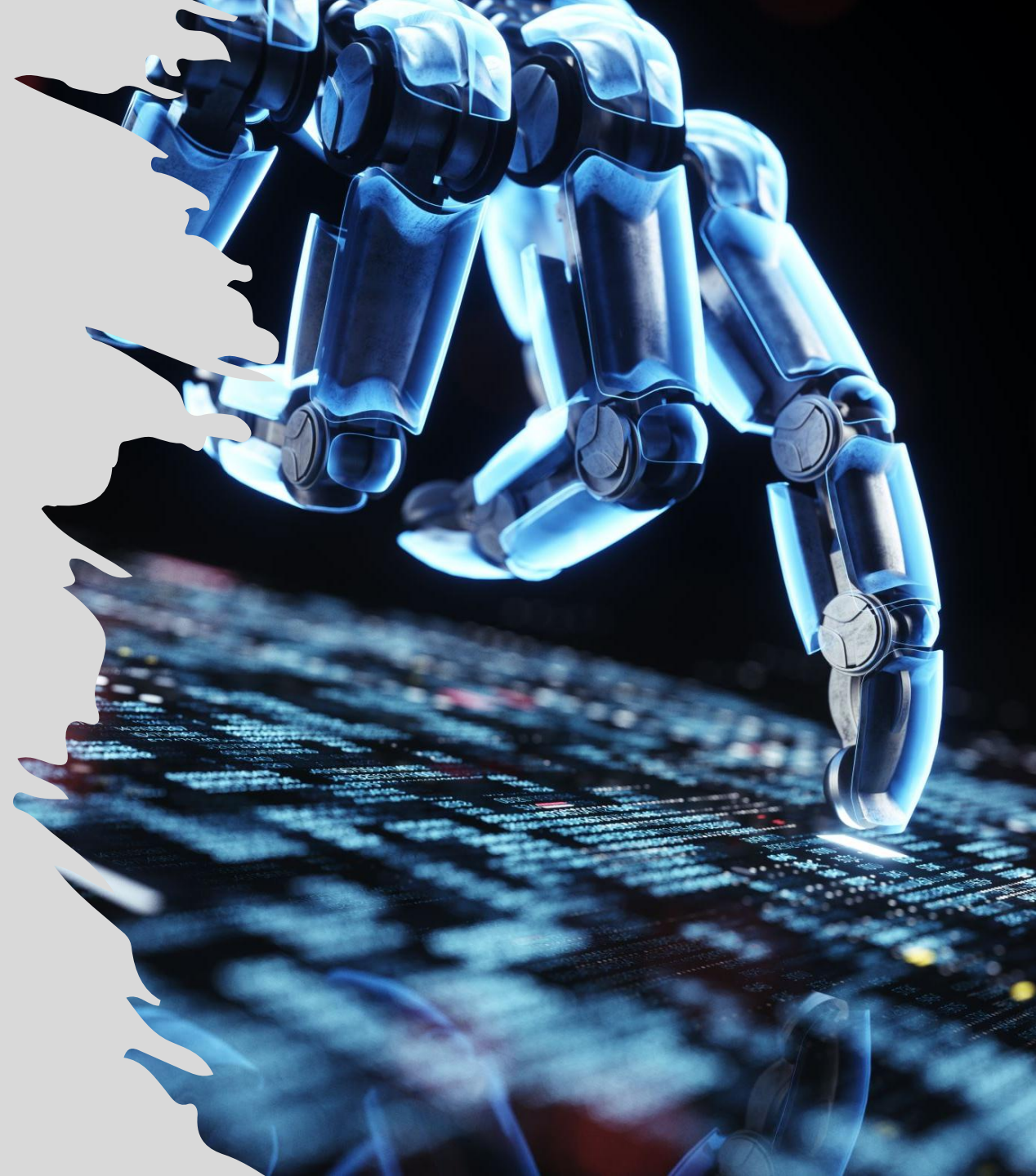
Target Region: London & South East

Target Audience: Schools, Colleges, Employers, Local Authorities

Delivery Format: Hybrid (Online & In-Person)

Duration: 2–6 weeks

Target Learners: Aged 15–19



Executive Summary

Objective:

Deliver an innovative, human-led AI & Data work experience program for post-16 learners, aligned with 2025 UK statutory careers guidance and Gatsby Benchmarks.

- ❑ **Hybrid model:** mentor-led online sessions + in-person experiences
 - ❑ **Focus:** AI, Data Science, and Emerging Tech
 - ❑ **Geographic scope:** London & the South
 - ❑ **Designed for scalability, inclusion, and measurable impact**
-



Why Now?

Context:

Statutory careers guidance effective Sept 2025

Updated Gatsby Benchmarks require meaningful, flexible work experience for all learners

Growing demand for AI & data talent in the UK economy

Opportunity:

Prepare learners for high-growth, future-focused careers

Provide equitable access to high-quality work experiences

Strengthen school-employer partnerships in London & the South



Programme Overview

Delivery: Hybrid (mentor-led online + in-person engagement)

Duration: Modular (2–6 weeks)

Key Themes: AI | Data | Digital Skills | Ethics | Teamwork

Structure:

- Explore AI & Data
 - Build Skills
 - Real Workplace Project
 - Regional Challenge Sprint
 - Showcase & Reflect
-



Module Breakdown

Explore AI & Data (Online)

- AI in the real world (localised to London & SE)
- Ethics and data responsibility
- Learner outcome: AI mind map

Build Skills (Online Labs)

- Python, data visualisation, digital tools (ChatGPT, AutoML)
 - Soft skills: collaboration, communication
 - Outcome: Mini-project portfolio
-



Module Breakdown (cont.)

Real Workplace Project (In-Person)

- Partnered with local employers (NHS Trusts, tech firms, councils)

Regional Challenge Sprint (Online)

- Theme: "How can AI improve life in London & the South"
- Cross-school collaboration, facilitated by mentors
- Outcome: Team pitch deck + presentation

Showcase & Reflect (Hybrid)

- Final presentations, personal reflection, CV/portfolio guidance
-

Module Breakdown

Benchmark	Alignment
1. Careers programme	5-phase modular design
2. Labour market info	Regional data focus
3. Individual needs	Flexible & inclusive modules
4. Curriculum links	Applied STEM and humanities
5. Employer encounters	Live mentoring, project feedback
6. Workplaces	In-person experiences with real employers
7. HE/FE links	Guest speakers, pathways info
8. Personal guidance	1:1 mentoring, reflection, progression planning



Local Impact

Region-Specific Relevance:

- Data from TfL, NHS, local councils
- Challenge themes tailored to London & South priorities
- Focus on green tech, smart cities, health innovation

School & College Value:

- Meets new guidance
 - Engages disengaged learners
 - Develops future-ready talent
-



Employer Engagement

Benefits for Employers:

- Future talent pipeline
- CSR impact & visibility
- Low lift: project brief + one mentor per team

Ways to Engage:

- Project brief contribution
 - On-site experience provider
 - Sprint panel judge or guest speaker
-



Delivery & Cost Model

- ☐ Flexible pricing to reflect school/college size
 - ☐ Reasonable fees for high-quality delivery and mentor support
 - ☐ Options for co-funding or grant application assistance
 - ☐ Scalable for multi-year implementation
-



Call to Action

Schools/Colleges/ITPs:

- Book a planning meeting
- Secure early-access for Sept 2025

Employers:

- Become a partner
 - Co-design a challenge or brief
-

shabbir@emanations.net

www.emanations.net



EMANATIONS

U N L O C K I N G P O T E N T I A L

