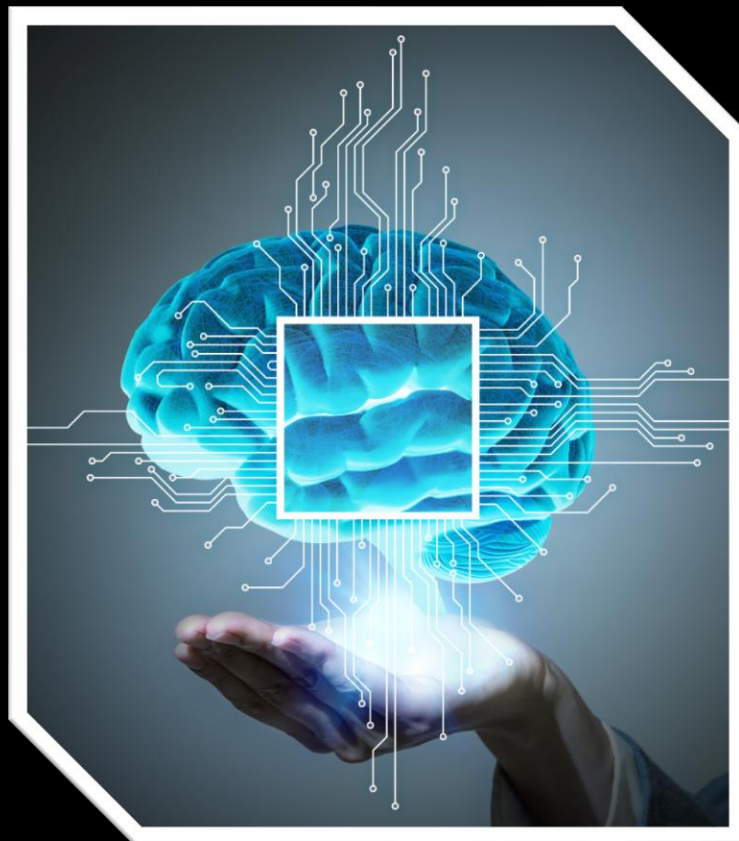


AI Work Experience for SEND Student



Delivery: Remote | Accessible | Creative | Mentored



Purpose

At Emanations Ltd, we believe AI should work for *everyone*. This inclusive work experience programme introduces SEND students aged 15–19 to the world of AI, not just as users—but as future creators, thinkers, and changemakers. Through a mix of real-world tools, guided challenges, and personalised support, students will:


- Discover how AI works
- Explore how it helps people (especially those with disabilities)
- Build confidence using creative AI tools
- Work on a personal project they can be proud of
- Meet real professionals and mentors

“At Emanations, we believe AI should be accessible to everyone. This programme is about unlocking potential and showing SEND students that the future of tech includes them.” — Shabbir, Founder, Emanations Ltd

Weekly Breakdown


_ Week 1: What Is AI & Why It Matters to Me

- Interactive video explainer: “What is AI, really?”
- Mini quiz game: *AI or Not AI?*
- Case study: AI in SEND learning tools (e.g. text-to-speech, emotion tracking)
- Group challenge: “AI That Helps Me” – students share tech that supports them

 “AI isn’t just robots — it’s something you already use. Now let’s see what you can do with it!”

_ Week 2: Data, Decisions & Doing the Right Thing

- Simple stories and comic strips: How AI learns (and where it goes wrong)
- Guided activity: Spot the bias – everyday examples
- Visual guide: What does “ethical AI” mean?
- Inclusive role models: Stories from diverse AI professionals

 “AI is powerful—but it needs people like you to help make it fair and kind.”

_ Week 3: Create with AI – Explore Tools & Careers

- Access to free creative AI tools (text-to-image, sound, chatbots)
- Workshop: Build your first AI-powered mini project
- Career journey map: From curiosity to career
- Guest speaker (neurodiverse or disabled professional): “My pathway into AI”

🧠 “Design, write, imagine, build—there’s a space in AI for everyone.”

– Week 4: My AI Impact – Project Showcase & Pathways

- Choose-your-own final project (with mentor check-ins)
- Safe space presentation: “My AI Idea” showcase
- Workshop: “How to talk about your skills on a CV or at college”
- Emanations Digital Badge + Career Mentoring Session

🚀 “Your journey in AI starts here – and it can go anywhere.”

💬 Support Built for SEND Learners

Emanations ensure full accessibility:

- Easy-read materials, visuals & captions
- Weekly wellbeing check-ins
- Family/carers involvement & updates
- Mentoring adapted to each learner’s communication style

🏆 What Students Receive

- Certificate of Completion (endorsed by Emanations Ltd)
- Showcase opportunity + feedback from mentors
- Entry into the Emanations SEND Innovator Network

Drop us a line

shabbir@emanations.net

Student Information



Welcome to the SEND AI Work Experience Programme!

Hi there!

We're so excited to have you join us on this 6-week journey into the world of Artificial Intelligence (AI)! This guide will help you get started, know what to expect, and make the most of your experience.



What's This Programme About?

This is a friendly, inclusive AI experience created just for SEND students aged 14–18. Over 6 weeks, you'll explore AI tools, work with mentors, design your own AI idea, and even visit a local startup space.



Weekly Overview

- Week 1: In-person kickoff workshop at your school or a local venue.
- Week 2: Online mentoring and research task about how AI helps people.
- Week 3: Try out an AI tool and review it in your own way.
- Week 4: Get creative – design your own AI idea!
- Week 5: Visit Ascend Co-Working in Chatham to meet professionals.
- Week 6: Celebrate with a showcase and share your 'Future Me' goals.



What You'll Need

- A device (laptop, tablet, or phone) with internet access
- Zoom or similar video app for mentoring
- Curiosity and willingness to try new things!



Support & Accessibility

We understand that everyone learns differently. Just let us or your mentor know if you need any help, extra time, or support with tasks. We're here to make sure you enjoy and learn at your own pace.



Contact Us

If you or your parent/guardian have questions at any time, just reach out to us:




Email: shabbir@emanations.net



Website: www.emanations.net

Let's have fun, learn about AI, and imagine your future together!

– The Emanations Team 

School Briefing Pack

Programme Objectives

This programme offers an inclusive, hybrid AI work experience opportunity for SEND students aged 14–18. It is designed to:

- Introduce SEND students to real-world AI tools and concepts
- Develop confidence, digital and soft skills, and career awareness
- Provide inclusive access to mentorship and creative exploration
- Build pathways to future AI learning and work opportunities

Key Dates & Format

- Duration: 6 weeks (1 in-person session at start and mid-point; one visit to Chatham; rest online)
- Start: Flexible based on school calendar
- Format: In-person workshops + online mentoring/tasks + local site visit

Week-by-Week Overview:

1. Week 1 – In-person kick-off workshop (school or local venue)
 2. Week 2 – Online mentoring + research task
 3. Week 3 – Try an AI tool and review
 4. Week 4 – In-person creative “Design Your AI” session
 5. Week 5 – Visit to Ascend Co-working, Chatham
 6. Week 6 – Final online or in-person student showcase
-


What Schools Need to Do

- Identify and recommend suitable SEND students (aged 14–18)
 - Distribute, collect and return registration forms
 - Provide a quiet, inclusive space for in-person workshops (Weeks 1 & 4)
 - Liaise with Emanations to confirm student needs/safeguarding
 - Support students' access to devices and WiFi for online activities
 - Encourage students to complete tasks at their own pace
-

Contact Us

For any questions or to register interest:

 shabbir@emanations.net

 www.emanations.net

A Quick Note for Schools & Councils

This 6-week SEND AI Work Experience Programme outline is intended to give a broad idea of what we will cover with your students—but it is not set in stone. We do recognise that every student is unique, and each school has different ways of working. That is why we will collaborate closely with you to shape the sessions, tasks, and schedule in a way that works best for your learners, your staff, and your setup. Whether it is adjusting the format, pace, or type of activities, we are happy to tweak things so everyone feels confident and included. We are happy to co-design elements with School career leaders to make it a great fit for your learners.

Our goal is to ensure the programme is inclusive, flexible, and genuinely impactful—no one-size-fits-all.