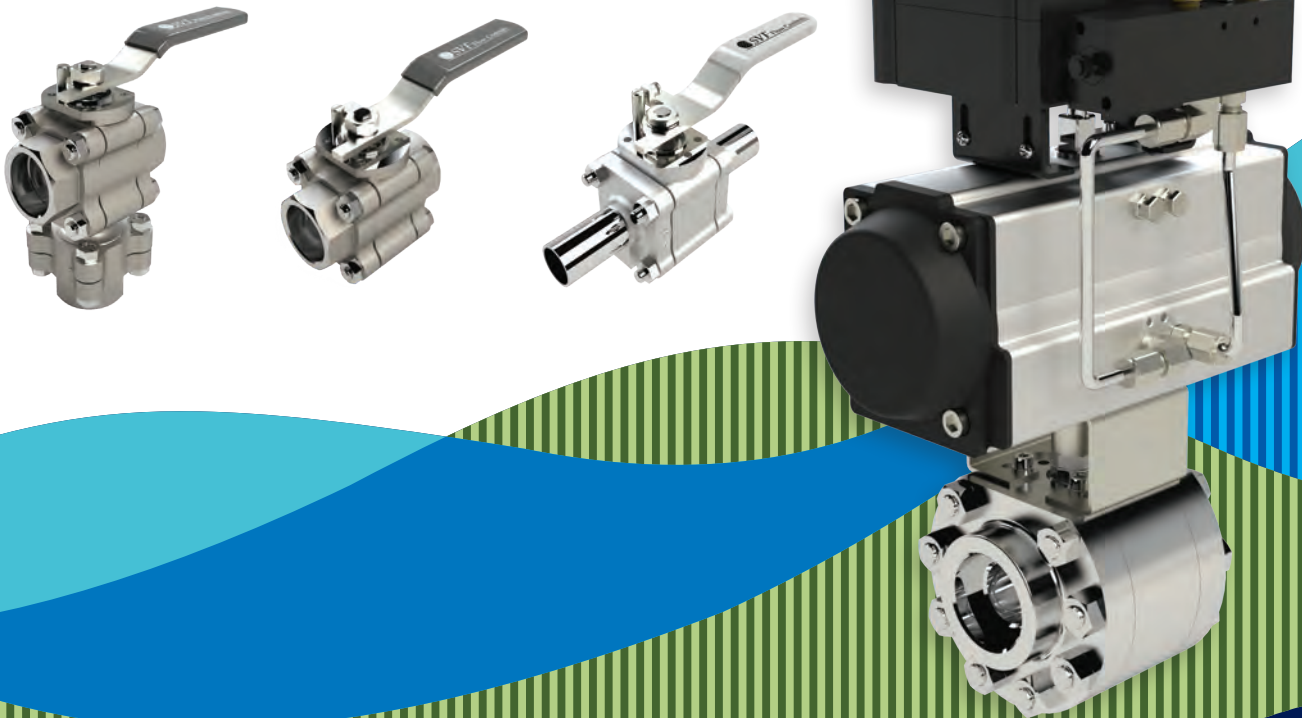




FLOW CONTROLS

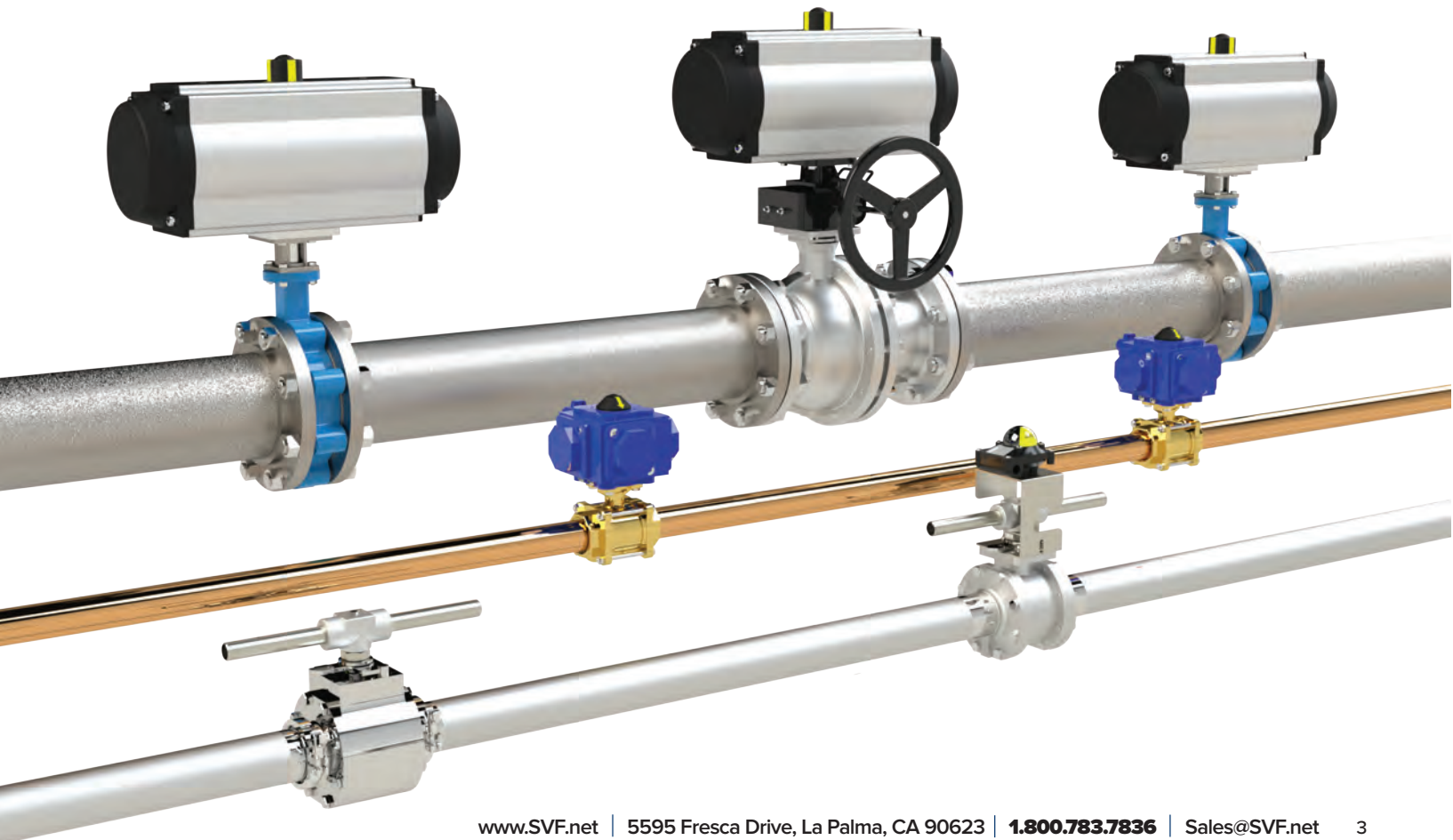
Valves | Actuators | Controls



PRODUCT SELECTION GUIDE

**Over 35 years
of experience
in Valves,
Automation
& Controls.**

SVF Flow Controls is a recognized leader in flow control technology. The Company's market focus and technical expertise have become the hallmark for SVF's success. As a sales, marketing, and engineering organization, SVF Flow Controls has created a marketing alliance that provides the Company's customers with access to state of the art manufacturing operations, engineering and an ISO 9001:2015 quality level resulting in the most respected line of high-end, process-quality valves, actuators and controls in today's world market. With over 35 years of valve manufacturing experience, SVF Flow Controls regularly engineers valve designs of exotic alloys for unique applications such as high pressure, high purity, etc., as well as for specific industries such as chemical, biotech, semiconductor, pharmaceutical, petro-chem, food & beverage, oil & gas, refining and other industries throughout the world. Today, SVF Flow Controls leads the market in offering a full range of superior quality engineered valves, actuators & controls to meet and exceed the needs and requirements of SVF's customers.



SVF Flow Controls Product List

High Performance Ball Valves

PRODUCT	DESCRIPTION	PORT SIZE	PAGE
R8	Three-Piece Ball Valve, High Performance	Standard Port	8
B8	Three-Piece Ball Valve, High Performance	Full Port	8
R9	Three-Piece Ball Valve, Direct Mount	Standard Port	8
B9	Three-Piece Ball Valve, Direct Mount	Full Port	8
L8	Three Piece Instrumentation Ball Valve	Tube-ID	9
FB9	Three-Piece Ball Valve, Fire Safe	Full Port	9
FS7	Three-Piece Ball Valve, Fire Safe	Full Port	9
D8/T7	Three-Piece Diverter Ball Valves	Standard Port	9
L6	Two-Piece Instrumentation Ball Valve	Standard Port	9

High Pressure Ball Valves

PRODUCT	DESCRIPTION	PORT SIZE	PAGE
H7	Three-Piece Ball Valve, High Pressure to 6000 PSI	Standard Port	10
HBEV	Seal Welded Ball Valve, High Pressure to 6000 PSI	Fire Safe Full Port	10
P4	Three-Piece Ball Valve, High Pressure to 5000 PSI	Standard Port	11
R8	Three-Piece Ball Valve, High Pressure, 3000 PSI	Standard Port	11
B8	Three-Piece Ball Valve, High Pressure, 3000 PSI	Full Port	11

Flanged Ball Valves

PRODUCT	DESCRIPTION	PORT SIZE	PAGE
41C	ANSI Class 150 Flanged Ball Valve, Fire Safe	Standard Port	12
B40	ANSI Class 150 Flanged Ball Valve	Full Port	12
B41C	ANSI Class 150 Flanged Ball Valve, Fire Safe	Full Port	13
B42C	ANSI Class 300 Flanged Ball Valve, Fire Safe	Full Port	13
B43C	ANSI Class 600 Flanged Ball Valve, Fire Safe	Full Port	13
MB51	ANSI Class 150 Flanged Ball Valve, Multi-Ported	Full Port	13

CleanFLOW™ + CleanTECH™ Hygienic Ball Valves

CleanFLOW™

PRODUCT	DESCRIPTION	PORT SIZE	PAGE
SB7	Three-Piece Hygienic Ball Valve Cast	Tube-ID	14
SB7F	Three-Piece Hygienic Ball Valve Forged	Tube-ID	14
SB79	Three-Piece Hygienic Ball Valve, Hastelloy	Tube-ID	14
SB7X	Three-Piece Hygienic Ball Valve, Fire Safe	Tube-ID	15
TSB7	Three-Piece Hygienic Ball Valve, Multi-Ported, Cast	Tube-ID	15
TSB7F	Three-Piece Hygienic Ball Valve, Multi-Ported, Forged	Tube-ID	15
SMC9	Multi-Ported Hygienic Ball Valve, Cast	Tube-ID	15
OPUS™	Hygienic Steam Trap Test Ball Valve	Tube-ID	15
CleanTECH™			
SB9-ETO	Three-Piece Sanitary Ball Valve, ETO Ends, Cast	Tube-ID	16
SB9-TR0	Three-Piece Sanitary Ball Valve, Tri-Clamp Ends, Cast	Tube-ID	16

Butterfly Valves

PRODUCT	DESCRIPTION	PAGE
SLB	Wafer and Lug Style, Class 150, Dead End Service (Lug)	17
B5	Wafer and Lug Style, Class 150	17
CVC	Wafer Body Style Check Valve	17

Specialty Ball Valves

PRODUCT	DESCRIPTION	PORT SIZE	PAGE
R88/R89	Three-Piece Ball Valve, 100% Hastelloy or Alloy 20	Standard Port	18
N8	Three-Piece Ball Valve, High Temperature Applications Up To 650°F	Standard Port	18
BN8	Three-Piece Ball Valve, High Temperature Applications Up To 650°F	Full Port	18
C8	Three-Piece Ball Valve, Dry or Liquid Chlorine Service	Standard Port	18
7B41	ANSI Class 150 Flanged Ball Valve, H ₂ O ₂ Service	Full Port	19
K8	Three-Piece Ball Valve, Cryogenic Service	Standard Port	19
BZ9-X	Three-Piece Bronze Ball Valve, Med-Gas Service	Full Port	19
V8	Three-Piece Valve, Characterized 15°, 30° & 60° “V” Balls	“V” Port	19
VB41	ANSI Class 150 Flanged Characterized 15°, 30° & 60° “V” Balls	“V” Port	19
VB42	ANSI Class 300 Flanged Valve, Characterized 15°, 30° & 60° “V” Balls	“V” Port	19

SVF Flow Controls Product List

Direct Mount Ball Valves

PRODUCT	DESCRIPTION	PORT SIZE	PAGE
BEV9B	Two-Piece Ball Valve, Direct Mount	Full Port	20
EZ9B	Three-Piece Ball Valve, Direct Mount	Full Port	20
MZ9B	Multi-Ported Ball Valve, Direct Mount	Full Port	20
BZ9	Three-Piece Bronze Ball Valve, Direct Mount	Full Port	20

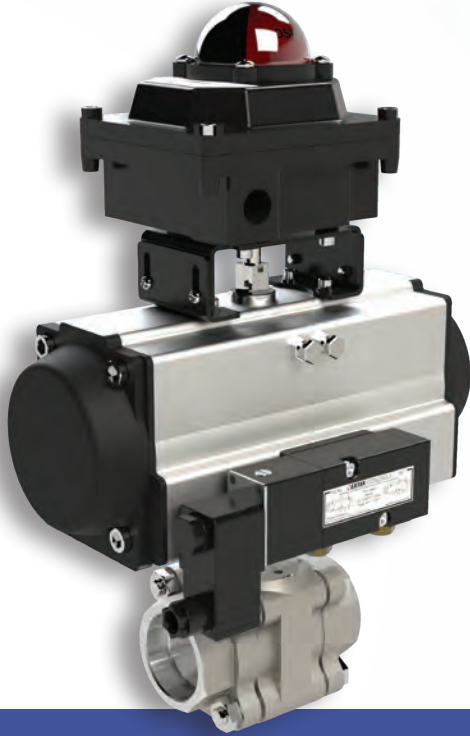
Industrial Series

PRODUCT	DESCRIPTION	PORT SIZE	PAGE
15SS	One-Piece Ball Valve, 316 Stainless Steel, 800 WOG	Standard Port	21
20SS	Two-Piece Ball Valve, 316 Stainless Steel, 1000 WOG	Full Port	21
30SS - CS	Three-Piece Ball Valve, 316 Stainless & Carbon Steel, 1000 WOG	Full Port	21
26SS - CS	Two-Piece Ball Valve, 316 Stainless & Carbon Steel, 2000 WOG	Full Port	21
759LH	Two-Piece Ball Valve, Forged Brass Body, 600 WOG	Full Port	22
40SS	Stainless Steel Gate Valve, 200 WOG		22
50SS	Stainless Steel Globe Valve, 200 WOG		22
60SS	Stainless Steel Check Valve, 200 WOG		22
70SS	Stainless Steel Y-Strainer, 800 WOG		23
500F	Forged Gate Valve, Class 800		23
505F	Forged Globe Valve, Class 800		23
520F	Forged Swing Check Valve, Class 800		23
522F	Forged Check Valve, Class 800		24
400	Cast Steel ANSI Class 150 Flanged Gate Valve		24
405	Cast Steel ANSI Class 150 Flanged Globe Valve		24
422	Cast Steel ANSI Class 150 Flanged Check Valve		24

Actuators and Controls

PRODUCT	DESCRIPTION	PAGE
Actuators		
Rack and Pinion Pneumatic Actuator	Double Acting or Spring Return	25
Quad4™ Series 4-Piston Pneumatic Actuator	Double Acting or Spring Return	25
ASD Spring Diaphragm Pneumatic Actuator	Spring Return	25
E-SERIES Electric Actuator	Heavy Duty High Performance Electric Actuator	25
EM-SERIES Electric Actuator	Heavy Duty High Performance Electric Actuator	26
ESR-Series Spring Return Electric Actuator	Heavy Duty Spring Return Electric Actuator	26
Limit Switches		
NEXUS™-LS/NEXUS™-LX Limit Switch	Limit Switch	26
NEXUS™-LP/LPX	Discrete Valve Controller	26
NEXUS™-ID/IX	As-I Protocol	27
NEXUS™-PS	Low Profile, Proximity Switch	27
NEXUS™-TC	Two-Stage Controller	27
Pilot Valves		
VECTOR™ Pilot Valve	NEMA 4, NEMA 7, ATEX or Intrinsically Safe Pilot Valve	27
Positioners		
EXACT Positioner	Pneumatic, Electro-Pneumatic and Digital HART Positioner	28
V SERIES Positioner	Pneumatic or Electro-Pneumatic Positioner	28
Other		
DMO Series	Declutchable Manual Override	28
MGO Series	Manual Gear Operator	28
SC / SX Series	Secondary Containment / Stem Extension	28
VW Series	Filter Regulator	28

High Performance Ball Valves



High Performance Valves from SVF Flow Controls are anything but ordinary. Designed for durability, our process-quality ball valves have features which make them widely compatible and easy to install.

High Performance, Ball Valve features:

- ▶ Three-piece construction enables the valves to meet a wide range of piping requirements
- ▶ Bi-directional flow, pressure-assisted sealing guarantees tight shut-off and low torque
- ▶ Blowout proof stem and live loaded stem seal design automatically adjusts for wear and thermal cycling
- ▶ Encapsulated body seal allows for field welding without disassembly
- ▶ Wide variety of options, accessories and materials
- ▶ ISO 5211 mounting pad design
- ▶ Three-Piece valve features “swing-out” design for ease of maintenance
- ▶ Class 300, 600 and 900



R8/B8
Three-Piece Ball Valve
R8 - Standard Port
B8 - Full Port

SIZES
R8: 1/4" - 3"
B8: 1/2" - 2-1/2"

MATERIALS
316 Stainless Steel
Carbon Steel
Hastelloy

END CONNECTIONS
Screwed Ends (FNPT)
Socket Weld Ends
Butt Weld Ends

SEAT MATERIALS
TFM1600™
SupraLon™
Delrin®
PEEK
UHMWPE

Wide range of Seat and Seal materials to meet all Process Applications



R9/B9
Three-Piece Ball Valve
R9 - Standard Port
B9 - Full Port

SIZES
R9: 1/2" - 2"
B9: 1/2" - 2"

MATERIALS
316 Stainless Steel
Carbon Steel

END CONNECTIONS
Screwed Ends (FNPT)
Socket Weld Ends

SEAT MATERIALS
TFM1600™

ISO 5211 mounting pad for easy Direct Mount actuation



L6
Instrumentation
Ball Valve

SIZES
1/4" - 1"

MATERIALS
316 Stainless Steel

END CONNECTIONS
Compression Ends

SEAT MATERIALS
TFM1600™

Compression ends compatible with all leading instrument fittings



L8
Instrumentation
Three-Piece Ball Valve

SIZES
1/4" - 1"

MATERIALS
316 Stainless Steel

END CONNECTIONS
Compression Ends
Compression Male Ends
(without nut & ferrules)

SEAT MATERIALS
TFM1600™
SupraLon™
Delrin®
PEEK
UHMWPE

Compression ends compatible with all leading instrument fittings



FB9/FS7
Fire Safe API 607
Three-Piece Ball Valve
Full Port

SIZES
FB9: 1/2" - 2"
FS7: 3" - 4"

MATERIALS
316 Stainless Steel
Carbon Steel

END CONNECTIONS
Screwed Ends (FNPT)
Socket Weld Ends

SEAT MATERIALS
TFM1600™
Delrin® (FS7 Only)

Fire-Safe certification to API-607

Anti-Static stem device

ISO 5211 Mounting pad for easy Direct Mount actuation

FM 7400 certified



D8/T7
Diverter (D8)/3-Way (T7)
Ball Valve
Three Piece, Standard Port
Bottom Port

SIZES
D8: 1/4" - 2"
T7: 1/4" - 2"

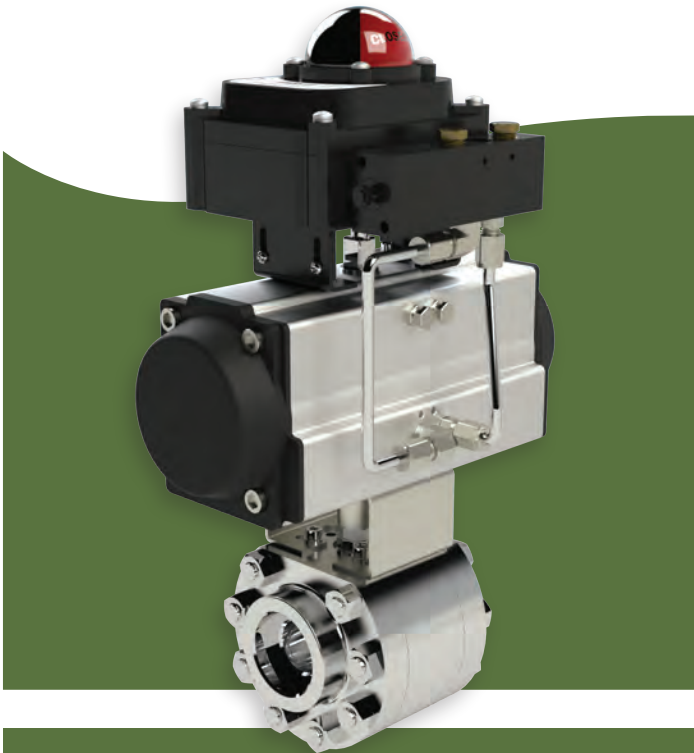
MATERIALS
316 Stainless Steel
Carbon Steel

END CONNECTIONS
Screwed Ends (FNPT)
Socket Weld Ends
Butt Weld Ends

SEAT MATERIALS
TFM1600™
SupraLon™
PTFE
Delrin® (D8 Only)
PEEK (D8 Only)
UHMWPE (D8 Only)

Available in a variety of flow patterns

SVF Flow Controls High Pressure Ball Valves



High-pressure applications require precision engineering, rugged construction and special features for advanced performance and safety. SVF Flow Controls offers a full range of high-pressure valves for all high-pressure applications including hydraulics, steam, chemical, oil and gas.

High Pressure Ball Valve features:

- ▶ Three-piece construction enables the valves to wide range of piping requirements
- ▶ Bi-directional flow, pressure-assisted sealing guarantees tight shut-off and low torque
- ▶ Blowout proof stem and live loaded stem seal design automatically adjusts for wear and thermal cycling
- ▶ Wide variety of options, accessories and materials
- ▶ Three-Piece valve features “swing-out” design for ease of maintenance



H7

High Pressure
Three-Piece Ball Valves
Standard Port

SIZES

1/2" - 2" = 6000 PSI

MATERIALS

316 Stainless Steel
Carbon Steel

END CONNECTIONS

Screwed Ends (FNPT)
Socket Weld Ends
SAE ends on 1/2" & 1"
Code 62 ends on 3/4" & 1"

SEAT MATERIALS

Delrin®
PEEK
UHMWPE

High pressure up to 6000 PSI



HBEV

High Pressure
Seal Welded Ball Valve Full Port
Fire Safe API-607

SIZES

1/2" - 2" = 6000 PSI

MATERIALS

316 Stainless Steel

END CONNECTIONS

Screwed Ends (FNPT)
Socket Weld Ends
SAE ends on 1/2" & 1"

SEAT MATERIALS

Delrin®
PEEK

*Fire Safe to API-607
Anti-Static stem device
ISO 5211 mounting pad for
easy actuation*



P4

High Pressure
Three-Piece Ball Valve
Standard Port

SIZES

1/2" - 1" = 5000 PSI

MATERIALS

316 Stainless Steel
Carbon Steel

END CONNECTIONS

Screwed Ends (FNPT)
Socket Weld Ends
SAE ends on 1/2" & 1"

SEAT MATERIALS

Delrin®
PEEK

High pressure up to 5000 PSI



R8

Process-Quality
Three-Piece Ball Valve
Standard Port

SIZES

1/4" - 1" = 3000 PSI
1-1/4" - 2" = 2000 PSI

MATERIALS

316 Stainless Steel
Carbon Steel
Hastelloy

END CONNECTIONS

Screwed Ends (FNPT)
Socket Weld Ends
Butt Weld Ends

SEAT MATERIALS

Delrin®
PEEK

Encapsulated body seals to facilitate welding without disassembly

ISO 5211 mounting pad for easy actuation



B8

Process-Quality
Three-Piece Ball Valve
Full Port

SIZES

1/2" - 3/4" = 3000 PSI
1" - 1-1/2" = 2000 PSI

MATERIALS

316 Stainless Steel
Carbon Steel

END CONNECTIONS

Screwed Ends (FNPT)
Socket Weld Ends
Butt Weld Ends

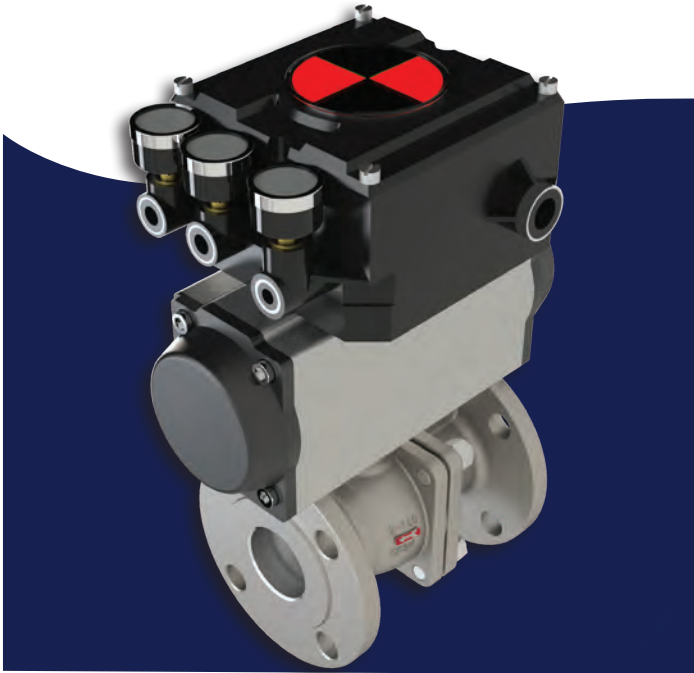
SEAT MATERIALS

Delrin®
PEEK

Encapsulated body seals to facilitate welding without disassembly

ISO 5211 mounting pad for easy actuation

SVF Flow Controls Flanged Ball Valves



SVF Flow Controls flanged valves are available in Stainless Steel or Carbon Steel, Standard Port or Full Port ranging in sizes from 1/2" to 8"

Flanged Ball Valve features:

- ▶ Fire Safe Certification to API 607 & 608 with Anti-Static Stem (with Grafoil body seals only)
- ▶ Standard NACE MR0175
- ▶ Live-loaded stem seal ensures seal-tight pressure containment even under thermal cycling
- ▶ Blowout proof stem adds safety and reliability
- ▶ Standard locking handle in both open and closed positions



41C
Fire Safe
ANSI Class 150
Standard Port Flanged
Ball Valve

SIZES
1-1/2" - 6"

MATERIALS
316 Stainless Steel
Carbon Steel

END CONNECTIONS
150# Flanged Ends

SEAT MATERIALS
TFM1600™
SupraLon™

Standard NACE MRO175

ISO 5211 mounting pad for easy automation

Built-In ISO 5211 direct mounting pad

SupraLon™ seats specifically designed for higher temperature, steam and thermal fluid applications up to 650°F



20SS
ANSI Class 150
Full Port Flanged Ball Valve

SIZES
1" - 6"

MATERIALS
316 Stainless Steel
Carbon Steel

END CONNECTIONS
150# Flanged Ends

SEAT MATERIALS
RTFE



B41

Fire Safe
ANSI Class 150
Full Port Flanged Ball Valve

SIZES
1/2" - 8"

MATERIALS
316 Stainless Steel
Carbon Steel

END CONNECTIONS
150# Flanged Ends

SEAT MATERIALS
TFM1600™
SupraLon™

Standard NACE MRO175

Chevron (V-Ring) stem seals assures low friction and leak tight performance (available in PTFE Only)

Built-In ISO 5211 direct mounting pad

SupraLon™ seats specifically designed for higher temperature, steam and thermal fluid applications up to 650°F



B42

Fire Safe
ANSI Class 300
Full Port Flanged Ball Valve

SIZES
1/2" - 8"

MATERIALS
316 Stainless Steel
Carbon Steel

END CONNECTIONS
300# Flanged Ends

SEAT MATERIALS
TFM1600™
SupraLon™

Standard NACE MRO175

Chevron (V-Ring) stem seals assures low friction and leak tight performance (PTFE only)

Built-In ISO 5211 direct mounting pad for easy actuation

SupraLon™ seats specifically designed for higher temperature, steam and thermal fluid applications up to 650°F



B43

Fire Safe
ANSI Class 600
Full Port Flanged Ball Valve

SIZES
1/2" - 8"

MATERIALS
316 Stainless Steel
Carbon Steel

END CONNECTIONS
600# Flanged Ends

SEAT MATERIALS
SupraLon™

Standard NACE MRO175

ISO 5211 mounting pad for easy actuation

Worm gear operator handwheel for 6" & 8" valves

SupraLon™ seats specifically designed for higher temperature, steam and thermal fluid applications up to 650°F



MB51

ANSI Class 150
Full Port Multi-Ported Flanged Ball Valve

SIZES
1" - 8"

MATERIALS
316 Stainless Steel
Carbon Steel

END CONNECTIONS
150# Flanged Ends

SEAT MATERIALS
RTFE

ISO 5211 mounting pad for easy actuation

Available with L port or T port

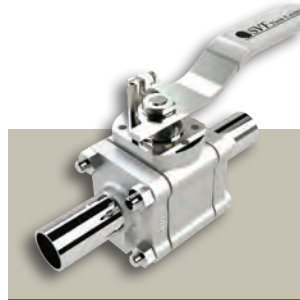
SVF Flow Controls Hygienic Ball Valves



CleanFLOW™ hygienic ball valves by SVF Flow Controls are engineered to be a true process piping component to specifically meet demanding processes found in the pharmaceutical, bio tech, semiconductor, cosmetics, foods and other industries. The port opening of the valve's flow path is dimensionally identical to the adjacent tubing. This "Tube-ID" feature provides predictable flow rates and pressure drops and ensures thorough cleaning and drainability as mandated by ASME-BPE.

Hygienic Ball Valve features:

- ▶ ASME - BPE compliant
- ▶ Complete 316L Stainless Steel construction
- ▶ ISO 5211 mounting pad for easy actuation
- ▶ Encapsulated body seals to facilitate welding without disassembly
- ▶ Controlled delta-ferrite chemistry
- ▶ Live-loaded stem seal ensures seal-tight pressure containment even under thermal cycling
- ▶ Blowout proof stem adds safety and reliability
- ▶ Drainable design with Tube-ID dimensions
- ▶ Standard interior finish is 15 Ra or better
- ▶ Locking handle available in both open and closed position



SB7
Hygienic (Cast)
Three-Piece Ball Valve

SIZES
1/2" - 6"

MATERIALS
316 Stainless Steel
(ASTM A351 CF3MN)

END CONNECTIONS
Tri-Clamp Ends
Extended Tube OD

SEAT MATERIALS
TFM1600™

Weld bosses for easy purge porting on ends

Cavity filled TFM1600™ seat option available

Tube-OD ends designed for orbital welding



SB7F
Hygienic (Forged)
Three-Piece Ball Valve

SIZES
1/2" - 4"

MATERIALS
316L Forged
Stainless Steel
(A182-F316L)

END CONNECTIONS
Tri-Clamp Ends
Extended Tube OD

SEAT MATERIALS
TFM1600™

Cavity filled TFM1600™ seat option available

Tube-OD ends designed for orbital welding



SB79
Hygienic Three-Piece
Hastelloy Ball Valve

SIZES
1/2" - 2"

MATERIALS
Hastelloy C276
(ASTM A494 CW12MW)

END CONNECTIONS
Tri-Clamp Ends
Extended Tube OD

SEAT MATERIALS
TFM1600™

Weld bosses for easy purge porting on ends

Cavity filled TFM1600™ seat option available

Tube-OD ends designed for orbital welding



SB7X
Fire Safe
Hygienic (Cast)
Three-Piece Ball Valve

SIZES
1/2" - 2"

MATERIALS
316L Stainless Steel
(ASTM A351 CF3MN)

END CONNECTIONS
Extended Tube OD

SEAT MATERIALS
TFM1600™

API 607 Fire Safe Certification
Built-In ISO 5211 direct mounting pad for easy actuation
Tube-OD ends designed for orbital welding



TSB7
Multi-Ported, Hygienic
(Cast or Forged)
Three-Piece Ball Valve

SIZES
1/2" - 4"

MATERIALS
316L Stainless Steel
(ASTM A351 CF3MN)
316L Forged Stainless Steel (A182-F316L)

END CONNECTIONS
Tri-Clamp Ends
Extended Tube OD

SEAT MATERIALS
TFM1600™

Cavity filled TFM1600™ seat option available
Side Port or Bottom Port
Tube-OD ends designed for orbital welding



SMC9
Multi-Ported, Hygienic (Cast)

SIZES
1/2" - 4"

MATERIALS
316L Stainless Steel
(ASTM A351 CF3M)

END CONNECTIONS
Tri-Clamp Ends
Extended Tube OD

SEAT MATERIALS
TFM1600™

Cavity filled TFM1600™ seat
Built-In ISO 5211 direct mounting pad for easy actuation
Side Port design
L-Port and T-Port options
Positive shut-off on all three ports



OPUS™
Steam Trap Test Valve

SIZES
1/2" - 2"

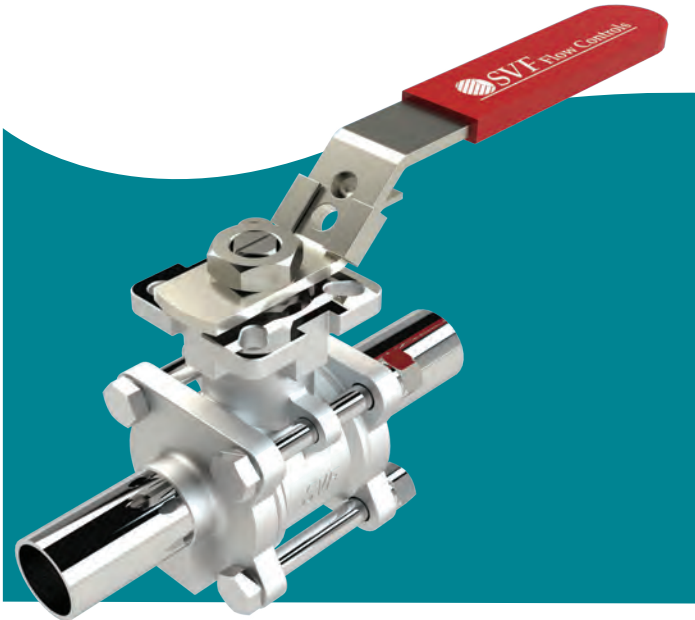
MATERIALS
316L Stainless Steel
(ASTM A351 CF3MN)

END CONNECTIONS
Tri-Clamp Ends
Extended Tube OD

SEAT MATERIALS
TFM1600™

Multifunctional valve providing three stages of fluid control; SERVICE, OPEN AND TRAP
Delivers full flow of clean steam through Tube-ID porting
High-performance steam trap test valve designed exclusively for the high purity, pharmaceutical market
Available with a selection of trap connections, actuation and materials, including 316L cast, 316L forged and Hastelloy

SVF Flow Controls Sanitary Ball Valves



CleanTECH™ ball valves by SVF Flow Controls are manual and automated ball valve solutions for semiconductor, food & beverage, dairy, flavorings and cosmetics & fragrance. All materials comply with applicable ASTM material specifications as well as FDA and USDA requirements.

Sanitary Ball Valve features:

- ▶ Three piece investment cast stainless steel
- ▶ Standard locking device
- ▶ Built-In ISO 5211 direct mounting pad for easy actuation
- ▶ Live-loaded stem seal ensures seal-tight pressure containment even under thermal cycling
- ▶ Blowout proof stem adds safety and reliability
- ▶ Drainable design with *Tube-ID* dimensions
- ▶ Standard interior finish is 20 Ra or better



SB9-ETO

Three-Piece Ball Valve
Tube-ID Port

SIZES
1/2" - 4"

MATERIALS
Stainless Steel
(ASTM A351 CF8M)

END CONNECTIONS
Extended Tube OD

SEAT MATERIALS
TFM1600™

TFM1600™ seat and body seal material complies with FDA CFR Title 21 Part 177.1550 and USP Class VI

Optional TFM1600™ cavity filled seats available

Weld bosses for easy purge porting on ends



SB9B-TRI CLAMP

Three-Piece Ball Valve
Tube-ID Port

SIZES
1/2" - 4"

MATERIALS
Stainless Steel
(ASTM A351 CF8M)

END CONNECTIONS
Tri-Clamp Ends

SEAT MATERIALS
PTFE

PTFE™ seat and body seal material comply with FDA CFR Title 21 Part 177.1550 and USP Class VI

Optional PTFE cavity filled seats available

SVF Flow Controls Butterfly Valves



The SVF Flow Controls SLB Series valves are designed for superior performance in general purpose plant-wide applications. The direct-mount feature reduces the size and weight of traditional automated butterfly valves.



Butterfly Valves SLB

SIZES
2" - 24" (Lug)
2" - 12" (Wafer)

MATERIALS
316 Stainless Steel Disc

SEAT MATERIALS
EPDM
BUNA
VITON
PTFE

Butterfly Valves B5

SIZES
2" - 36"

MATERIALS
Ductile Iron Disc
Aluminum Bronze Disc
316 Stainless Steel Disc

SEAT MATERIALS
EPDM
BUNA

Check Valve CVC Ductile Iron Wafer Style

SIZES
2" - 16"

MATERIALS
Aluminum Bronze Disc

SEAT MATERIALS
EPDM

Designed for Dead End Service (Lug)

Built in ISO 5211 direct mounting pad for easy automation

Ductile iron body with epoxy coating

Wafer and Lug style

PTFE stem bushings

10 position locking handle 2" to 6"

Gear Operator 8" - 24"

Wafer and Lug style

10 Position Lever Handle 2" - 12"

Gear Operator 2" - 36"

PTFE Graphite Stem Bushings

Extension Stem Kits available for special installations 24" - 72"

Check Valve-Wafer Style Body

300 WOG

D.I. Body with 304 Stainless Steel Spring & Shaft

Spring Loaded Double Aluminum Bronze Disc

6", 8", 10" and 12" Approved as Chemigation Valve

Suitable for Vertical & Horizontal Installation

SVF Flow Controls Specialty Ball Valves



Unique applications, specialty materials, specific handling requirements for hazardous substances - whatever the processing need - SVF Flow Controls has a valve to meet it. All of our products are designed to meet or exceed industry performance and safety standards.



R88/89
Three-Piece
Alloy 20 /Hastelloy
Ball Valve
Standard Port

SIZES
R88: 1/4" - 3"
R89: 1/4" - 3"

MATERIALS
Alloy 20 (R88)
Hastelloy (R89)

END CONNECTIONS
Screwed Ends (FNPT)
Socket Weld Ends
Butt Weld Ends

SEAT MATERIALS
TFM1600™
SupraLon™
Delrin®
PEEK
UHMWPE

*All wetted parts are
100% Hastelloy
(ASTM A494 CW-12MW) or
Alloy 20(ASTM A351-CN7M)*

*Encapsulated body seals to
facilitate welding without
disassembly*

*ISO 5211 mounting pad
for easy actuation*

*Other alloys include:
Duplex, AL6XN,
Inconel, Titanium, various
grades of
Stainless Steel*



N8/BN8
Steam & Thermal Fluids
Three-Piece Ball Valve
N8 - Standard port
BN8 - Full

SIZES
N8: 1/4" - 3"
BN8: 1/2" - 2-1/2"

MATERIALS
316 Stainless Steel
Carbon Steel

END CONNECTIONS
Screwed Ends (FNPT)
Socket Weld Ends
Butt Weld Ends

SEAT MATERIALS
SupraLon™

*High-performance design for
industrial steam and thermal
fluid applications*

*SupraLon™ seats specifically
designed for higher
temperature, steam and
thermal fluid applications
up to 650°F*

*Blowout proof stem adds
safety and reliability*

*Encapsulated body seal to facili-
tate welding without disassembly*

*Live-loaded stem seal ensures
seal-tight pressure containment
even under thermal cycling*

*ISO 5211 mounting pad for
easy actuation*



C8
Chlorine Service
Three-Piece Ball Valve
Standard Port

SIZES
1/4" - 2"

MATERIALS
Carbon Steel with
Hastelloy or
Monel Ball and Stem

END CONNECTIONS
Screwed Ends (FNPT)
Socket Weld Ends
Butt Weld Ends

SEAT MATERIALS
TFM1600™

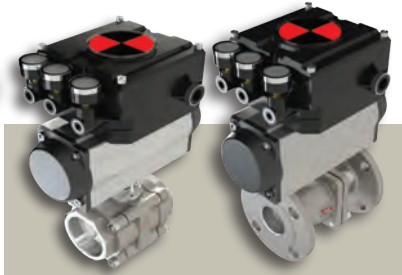
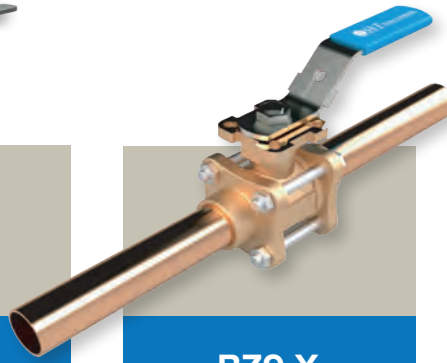
*Ideal for use in dry or liquid
Chlorine Service*

*Meets the Chlorine Institute
(Pamphlet 6) for piping
systems in Dry
Chlorine Service*

*ISO 5211 mounting pad for
easy actuation*

*Blowout proof stem adds
safety and reliability*

*Live-loaded stem seal
ensures seal-tight pressure
containment even under
thermal cycling*



7B41

Hydrogen Peroxide
ANSI Class 150
Full Port Flanged Ball Valve

KB9

Cryogenic Three-Piece
Ball Valve
Full Port

BZ9-X

Medical Gas Bronze
Three-Piece Ball Valve
Full Port

V8, VB41 & VB42

Characterized Control
"V" Ball Three Piece and
Flanged Ball Valve

SIZES

1/2" - 8"

SIZES

1/2" - 2"

SIZES

1/2" - 2"

SIZES

V8 (Three Piece): 1/2" - 2"
VB41 & VB42 (Flanged): 1" - 6"

MATERIALS

Stainless Steel

MATERIALS

Stainless Steel

MATERIALS

Bronze C84400

MATERIALS

316 Stainless Steel
Carbon Steel

END CONNECTIONS

150# Flanged Ends

END CONNECTIONS

Screwed Ends (FNPT)
Socket Weld Ends
Butt Weld Ends

END CONNECTIONS

Extended Copper
Type K Tube

END CONNECTIONS

Screwed Ends (FNPT)
Socket Weld Ends
150# Flanged Ends (VB41)
300# Flanged Ends (VB42)

SEAT MATERIALS

TFM1600™

SEAT MATERIALS

PCTFE

SEAT MATERIALS

PCTFE

SEAT MATERIALS

TFM1600™
SupraLon™

*316 Stainless Steel
cast materials*

*Passivated for H₂O₂
applications*

*All valves cleaned, bagged
and sealed according
to ASTM6-93*

*Built in ISO 5211 mounting pad
for easy actuation*

*TFM1600™ seats and
PTFE seats are compatible
with H₂O₂*

*Blowout proof stem adds
safety and reliability*

*Meets testing requirements
of BS6364 Standard*

*Blowout proof stem adds
safety and reliability*

*Designed for applications with
temperatures down to -320°F*

*ISO 5211 mounting pad for
easy actuation*

*Three-Piece "swing out"
design offers easy
access for in-line
maintenance*

Standard Anti-Static device

*ANSI Class 150 & Class
300 Flange End Options
Available*

Adjustable Screw Gland

*Blowout proof stem adds
safety and reliability*

*Live-loaded stem seal ensures
seal-tight pressure
containment under
continuous cycling*

*Built in ISO 5211 direct
mounting pad for easy
automation*

*Designed for fine control in a
wide range of services*

*Blowout proof stem adds safety
and reliability*

*Live-loaded stem seal ensures
seal-tight pressure containment
even under thermal cycling*

ISO 5211 mounting pad for easy actuation

*Characterized "V" Balls available in
15°, 30° and 60° angles*

SVF Flow Controls Direct Mount Valves



BEV9B

Direct Mount Ball Valve
Full Port

SIZES

1/2" - 4"

Pressure rated for
1000 WOG

316 Stainless Steel body,
ball and stem

316 Stainless Steel ends

Blowout proof stem
adds safety & reliability

Threaded Ends (FNPT)



EZ9B

Direct Mount Ball Valve
Full Port

SIZES

1/2" - 2"

Pressure rated for
1000 WOG

316 Stainless Steel body,
ball and stem

316 Stainless Steel ends

Blowout proof stem
adds safety & reliability

Threaded Ends (FNPT)



MZ9B

Direct Mount Ball Valve
Multi-Port

SIZES

1/2" - 2"

Pressure rated for
1000 WOG

Complete 316 Stainless
Steel Construction

L-Port and T-Port options

Positive shut-off on any
of the three ports

Blowout proof stem adds
safety and reliability

Threaded Ends (FNPT)



BZ9

Direct Mount Ball Valve
Full Port

SIZES

1/4" - 2"

Bronze Three Piece
ball valve

Pressure rated for 600psi

Full Port flow path
for maximum flow

Built-In ISO 5211 direct
mounting pad for
easy automation

Blowout proof stem adds
safety and reliability

End connections include
Threaded Ends (FNPT)
Sweat Ends

SVF Flow Controls

General Purpose Products



15SS Series
One-Piece Ball Valve
Standard Port

SIZES
1/4" - 2"

MATERIALS
Stainless Steel

END CONNECTIONS
Threaded Ends (FNPT)

SEAT MATERIALS
RTFE

W.P. 800 WOG

Blow-out Proof Stem

Locking Handle



20SS Series
Two-Piece Ball Valve
Full Port

SIZES
1/4" - 3"

MATERIALS
316 Stainless Steel

END CONNECTIONS
Threaded Ends (FNPT)

SEAT MATERIALS
RTFE

W.P. 1000 WOG

Blow-out Proof Stem

Locking Handle



30SS-CS Series
Three-Piece Ball Valve
Full Port

SIZES
1/4" - 4"

MATERIALS
316 Stainless Steel
Carbon Steel

END CONNECTIONS
Threaded Ends (FNPT)
Socket Weld Ends

SEAT MATERIALS
RTFE

W.P. 1000 WOG

Blow-out Proof Stem

Locking Handle



26SS-CS Series
Two-Piece Ball Valve
Full Port

SIZES
1/4" - 2"

MATERIALS
316 Stainless Steel
Carbon Steel

END CONNECTIONS
Threaded Ends (FNPT)

SEAT MATERIALS
RTFE

W.P. 2000 WOG

Blow-out Proof Stem

Locking Handle

SVF Flow Controls General Purpose Products



759LH Series

Two-Piece Brass Ball Valve
Standard Port

40SS Series

Gate Valve

50SS Series

Globe Valve

60SS Series

Check Valve

SIZES

1/2" - 2"

SIZES

1/2" - 2"

SIZES

1/2" - 2"

SIZES

1/2" - 2"

MATERIALS

Brass C37700

MATERIALS

316 Stainless Steel
Carbon Steel

MATERIALS

316 Stainless Steel (1/2" - 2")
Carbon Steel (1/4" - 2")

MATERIALS

316 Stainless Steel

END CONNECTIONS

Threaded Ends (FNPT)

END CONNECTIONS

Threaded Ends (FNPT)

END CONNECTIONS

Threaded Ends (FNPT)

END CONNECTIONS

Threaded Ends (FNPT)

SEAT MATERIALS

RTFE

SEAT MATERIALS

RTFE

SEAT MATERIALS

RTFE

W.P. 600 WOG

Forged Brass Body

Blow-out Proof Stem

Locking Handle

W.P. 200 WOG

Non-Rising Stem

W.P. 200 WOG

Rising Stem

W.P. 200 WOG

Swing Type Disc



70SS Series
Y Strainer

SIZES
1/2" - 2"

MATERIALS
316 Stainless Steel

END CONNECTIONS
Threaded Ends (FNPT)

SEAT MATERIALS
RTFE

W.P.800 WOG
20 Mesh



500F Series
Gate Valve

SIZES
1/4" - 2"

MATERIALS
316 Stainless Steel
Carbon Steel (1/2" - 2")

END CONNECTIONS
Threaded Ends (FNPT)
Socket Weld

Class 800
Trim 8
Maximum Pressure 1975 PSI
Maximum Temperature 850°F
Bolted Bonnet
API 602 compliant
ASTM A105 or ASTM A182/316L
Standard NACE MRO175



505F Series
Globe Valve

SIZES
1/4" - 2"

MATERIALS
316 Stainless Steel (1/2" - 2")
Carbon Steel (1/4" - 2")

END CONNECTIONS
Threaded Ends (FNPT)
Socket Weld

Class 800
Trim 8
Maximum Pressure 1975 PSI
Maximum Temperature 850°F
Bolted Bonnet
API 602 compliant
ASTM A105 or ASTM A182/316L
Standard NACE MRO175



520F Series
Forged Swing Check Valve

SIZES
1/4" - 2"

MATERIALS
316 Stainless Steel (1/2" - 2")
Carbon Steel (1/4" - 2")

END CONNECTIONS
Threaded Ends (FNPT)
Socket Weld

Class 800
Trim 8
Maximum Pressure 1975 PSI
Maximum Temperature 850°F
Bolted Cover
API 602 compliant
ASTM A105 or ASTM A182/316L
Standard NACE MRO175

SVF Flow Controls General Purpose Products

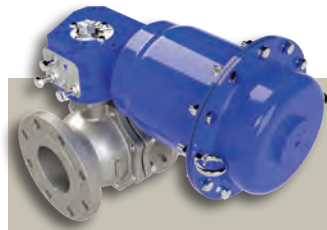
			
<p>522F Series Forged Check Valve</p>	<p>400 Series Cast Steel Flanged Gate Valve</p>	<p>405 Series Cast Steel Flanged Globe Valve</p>	<p>422 Series Cast Steel Flanged Check Valve</p>
<p>SIZES 1/4" - 2"</p>	<p>SIZES 2" - 12"</p>	<p>SIZES 2" - 12"</p>	<p>SIZES 2" - 12"</p>
<p>MATERIALS 316 Stainless Steel (1/2" - 2") Carbon Steel (1/4" - 2")</p>	<p>MATERIALS Cast Steel</p>	<p>MATERIALS Cast Steel</p>	<p>MATERIALS Cast Steel</p>
<p>END CONNECTIONS FNPT Socket Weld</p>	<p>END CONNECTIONS 150# Flanged Ends</p>	<p>END CONNECTIONS 150# Flanged Ends</p>	<p>END CONNECTIONS 150# Flanged Ends</p>
<p><i>Class 800</i></p> <p><i>Trim 8</i></p> <p><i>Maximum Pressure 1975 PSI</i></p> <p><i>Maximum Temperature 850°F</i></p> <p><i>Bolted Cover</i></p> <p><i>API 602 compliant</i></p> <p><i>ASTM A105 or ASTM A182/316L</i></p> <p><i>Standard NACE MRO175</i></p>	<p><i>Trim 8</i></p> <p><i>Maximum Pressure 285 PSI</i></p> <p><i>Maximum Temperature 1000°F</i></p> <p><i>Outside Screw & Yoke</i></p> <p><i>API 600 compliant</i></p> <p><i>ASTM A216</i></p> <p><i>Standard NACE MRO175</i></p>	<p><i>Trim 8</i></p> <p><i>Maximum Pressure 285 PSI</i></p> <p><i>Maximum Temperature 1000°F</i></p> <p><i>Outside Screw & Yoke</i></p> <p><i>Bolted Cover</i></p> <p><i>ASTM A216</i></p> <p><i>Standard NACE MRO175</i></p>	<p><i>Trim 8</i></p> <p><i>Maximum Pressure 285 PSI</i></p> <p><i>Maximum Temperature 1000°F</i></p> <p><i>Bolted Cover</i></p> <p><i>ASTM A216</i></p> <p><i>Standard NACE MRO175</i></p>

SVF Flow Controls Actuators



Rack and Pinion Series
Pneumatic Actuator

The SVF Flow Controls pneumatic rack and pinion actuator is manufactured using the latest materials and methods to provide dependable and smooth operation in demanding process control conditions.



ASD Series
Spring Diaphragm Actuator

The ASD Spring Diaphragm Actuators are designed for quarter turn applications with minimal media supply pressure the Spring Diaphragm separates the supply media from the springs allowing the actuator to be operated by unfiltered air, gas, water or mineral based hydraulic fluid.



Quad4 Series
Four-Piston
Pneumatic Actuator

The Quad4 is a four-piston actuator which generates torque around a centrally located pinion, giving more than double the torque of a single or double rack and pinion actuator.



E-Series
Electric Actuator

The E-Series are heavy duty electric actuators designed to provide the operating torque required to automate our full line of process-quality valves.

Hard Anodized aluminum housing

“Versa-View” Continuous mechanical position indicator

Nickel Plated Alloy drive shaft

ISO/NAMUR design for universal mounting and accessory attachment

Bi-Directional Stroke Adjustment

1/4” FNPT air inlet manifold

Actuator is designed for 120 PSI supply air pressure

Available in Spring Return or Double Acting models

High cycle life and low friction bearing

Field reversible for Fail Open or Fail Closed safety operations

ISO/NAMUR design for universal mounting and accessory attachment

Operated with supply media as low as 15 PSI

ISO 5211 bottom flange for valve automation

NAMUR output drive for installation of limit switches and positioners

Anodized aluminum with polyester coating

Available in Spring Return and Double Acting models

NAMUR interface for mounting of solenoid valve

*1/4” FNPT air inlet manifold
Actuator is designed for 120 PSI supply air pressure*

Heavy duty, fully enclosed high performance motor rated for On/Off & modulating service

Corrosion protection with thermally bonded polyester coating

All motors feature integral thermal overload protection

Designed for operation in temperatures from -40°F to 150°F

Actuators



EM-Series
Electric Actuator

The EM-Series are geared motors that provide rotary output (torque) to power all types of rotary valves. Rotary action is controlled through two limit switches located in the unit and in conjunction with two cams. Precise setting of either position is achieved by adjusting the cam to activate the switch at exactly the desired point in the rotary cycle.

Heavy duty, fully enclosed high performance motor rated for On/Off & modulating service

Built in thermal protection prevents motor burnout

Available 4-20mA signal input for controls

Available with optional manual override

Available for loads up to 30,000 in-lbs



ESR-Series
Spring Return
Electric Actuator

The ESR-Series actuator is a Spring Return Electric actuator providing protection in an event of a system failure or power loss. A mechanical spring is utilized to position the controlled device to either a fully open or fully closed position without any external power source.

Heavy duty, fully enclosed high performance spring return fail safe actuator

Superbly engineered, emergency shut down device designed for ball, butterfly and quarter turn valves

Built in thermal protection prevents motor burnout

Available 4-20mA signal input for controls

Optional clutchless manual override

Available for loads up to 2,302 in-lbs

Controls and Monitoring



**NEXUS-LS/
NEXUS-LX**
Limit Switch

The NEXUS™ Limit Switch is a reliable and compact position feedback device fitted with two mechanical SPDT switches rated for 5A service.

Optional switches and sensors available.

NEMA 4/4X, IP67 (NEXUS-LS™) or ATEX / NEMA 7 (NEXUS-LX™) certified

“Quick-Set” cam is spring loaded and requires no special tools for calibration

Dual 1/2” FNPT conduit entries facilitate wiring in the field and for additional auxiliary pilot valve connections

Captive cover bolts remain intact during wiring to prevent loss

Stainless Steel trim and mounting hardware

Rugged and Compact design



**NEXUS-LP/
NEXUS-LPX**
Discrete Valve Controller

The NEXUS™ discrete valve controller provides an optimized solution for on/off valve control & position sensing for the process industries.

Integrated Solution (switches, sensors, pilot and spool valve in a single platform)

NEMA 4/4X, IP67 (NEXUS-LP™) or ATEX NEMA 7 (NEXUS-LPX™) certified

Suitable for use on rotary applications for double acting or spring return actuators

NAMUR and ISO 5211 adjustable bracket mounting

5/2 Aluminum spool valve, anodized and polyester coated

1/2” FNPT conduit entry

Integrated pilot valve (Cv = 1.4) with manual override to operate spring return and double acting actuator



**NEXUS-ID/
NEXUS-IX**
Discrete Valve Controller

The NEXUS-ID/IX™ represents the latest As-Interface (As-I) technology for two-wire control and communication for today's sophisticated control system design.



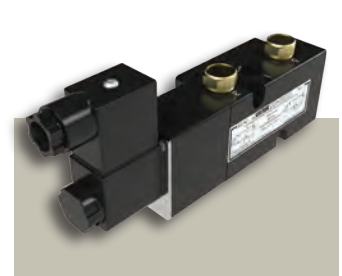
NEXUS-PS
Proximity Switch

The NEXUS-PS™ is a low profile sensor that delivers valve position status in demanding environments (IP67). The technology utilizes two reed devices that sense a magnetic target in the open and closed positions.



NEXUS-TC
Two-Stage Controller

The NEXUS-TC™ is a complete solution incorporating two solenoid valves and configured limit switches designed for two-stage operation.



VECTOR Series
Pilot Valve

The VECTOR series pilot valves are UL/CSA approved, direct mount (NAMUR VDI/ VDE 3845) valves used to pilot pneumatic actuators.



As-I device with two internal sensors and termination points for connecting additional sensors as well as two outputs to operate pilot valves

NEMA 4/4X, IP67 (NEXUS-ID™) or ATEX NEMA 7 (NEXUS-IX™) certified

Suitable for use on rotary applications for double acting or spring return actuators

NAMUR and ISO 5211 adjustable bracket mounting

5/2 Aluminum spool valve, anodized and polyester coated

1/2" FNPT conduit entry

Corrosion resistant non-metallic + stainless construction

Hermetically sealed reed elements

Handles both AC and DC current

Zero power required to operate

Fully adjustable set points for flexibility

Two voltage sources required to power both solenoid valves

Contact logic for each solenoid valve can be provided by level sensors, flow meters, PLC, etc.

Available for General Purpose or Hazardous applications

NEMA 4/4X, IP67 (VECTOR PV4), ATEX NEMA 7, CSA Approved (VECTOR PV6) ATEX NEMA 7 (VECTOR PV7) or Intrinsically Safe, IP65 (VECTOR PV9)

May be used as a 3-way or 4-way pilot valve for spring return and double acting actuators respectively

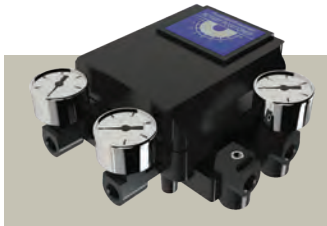
Available in different voltages (120 VAC, 220 VAC, 12VDC, 24 VDC).

NAMUR mounting interface

Class "F" coil standard (Vector PV4 and PV9), Class "H" coil standard (PV7)

Easily field retrofitted for Spring Return and Double Acting application

Controls and Monitoring



EXACT Series
Positioner

The EXACT Series positioners control the position of a rotary actuator and its final control element by modulating the flow of air supply to the actuator.



V Series
Positioner

The “V” Series Electro-Pneumatic (4-20mA) or Pneumatic (3-15psi) positioners are designed and manufactured to offer years of trouble-free and economical operation.

Safety Accessories



DMO Series
Declutchable Manual
Override

The DMO series allows simple and reliable manual positioning of valves, dampers, and other quarter turn devices to override existing pneumatic or hydraulic rotary actuators.



MGO Series
Manual Gear Operator

The MGO series features a rugged, industrial grade design suitable for all general industrial applications.

NEMA 4, IP66 certified

EXACT XL controls the position of a rotary actuator in response to an analog 4-20mA signal input

EXACT P3 controls the position of a rotary actuator in response to a controlled input pressure of 3 to 15psi

EXACT DH controls the position of a rotary actuator in response to a digital HART input

NAMUR and ISO 5211 adjustable bracket mounting

ATEX NEMA 7 or Intrinsically Safe certified

Modular / field upgradable design

Precision Click-Lock™ Calibration

NAMUR and ISO 5211 mounting

NEMA 4, NEMA 4X

Compact, modular design fits between valve and actuator for a complete manual override system

ISO 5211 Mounting

Three Stage Coupler (Actuator, Gear, Valve)

Powder coated exterior finish

ISO 5211 Mounting

Chainwheel option

Cast Iron construction



SC/SX Series
Secondary Containment/
Stem Extension

The SC/SX Series adds another level of containment to address fugitive emissions from stem packing.

The design also serves as a robust stem extension for applications on extremely hot lines, steam etc.

Standard ISO 5211 mounting system for modular attachment and field retrofit

Rugged and stable

304 Stainless Steel construction



VW Series
Filter Regulator

The VW series filter regulator provides accurate pressure regulation and high moisture removal.

Compact Design

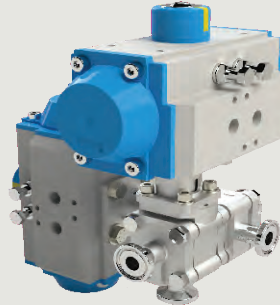
Pressure gauge in PSI and BAR

Maximum Pressure: 230 PSI

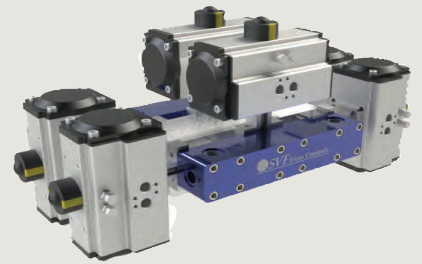
SVF Flow Controls Customized Solutions

Engineered Solutions tailored to meet your requirements

SVF designs and manufactures custom valves through our PRO-SPEC program. Here, we develop “process-specific” valves, automated valve and control packages to meet specific process requirements. Some of the custom projects include:



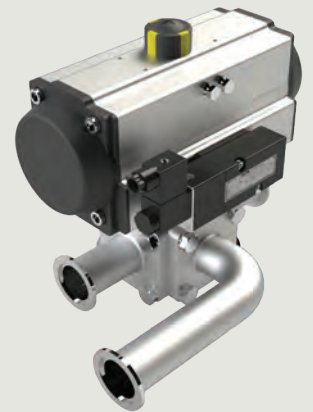
TSB7 Series Manifold



High Pressure Manifold



Tank Bottom Valve



SMC9 Series with Vacuum Ends












SB7 Series with Quad4 actuator and NEXUS-PS proximity switch



SB7 Series with Purge Ports

SVF Flow Controls Standards

	ASTM	American Society for Testing Materials — Develops standards for materials, products, systems and services.
	ANSI	American National Standards Institute — Organization that coordinates work among U.S. Standards writing groups; Works in conjunction with other groups such as ISO, ASME, ASTM, etc.
	API 598	(American Petroleum Institute) Valve Inspection and Testing that covers the testing and inspection requirements for gate, globe, check, ball, plug and butterfly valves.
	ASME	American Society of Mechanical Engineers — Develops standards and testing criteria for finished products.
	ASME-BPE	International standard developed as an aid for the design and construction of equipment Intended for use In the manufacturing of biopharmaceuticals.
	CGA	The Compressed Gas Association (CGA) — Standards, technical information and recommendations dictate safe and environmentally responsible practices in the manufacture, storage, transportation, distribution and use of industrial gases.
	CRN	Canadian Registration Number — Assigned by each province or territory of Canada to accept and register the design of a boiler, pressure vessel, or fitting.
	FDA	Food and Drug Administration — a Federal agency responsible for protecting and promoting public health through the control and supervision of food safety, tobacco products, dietary supplements, prescription and over-the-counter pharmaceutical drugs, vaccines, biopharmaceuticals, ERED, cosmetics, animal food& feed and veterinary products.
	NSF	NSF International — An organization committed to public health that writes standards and certifies products for food, water and consumer products.
	ISO	5211 International Standards Association — A worldwide process control organization. An internationally recognized certification for manufacturers that comply with high standards of quality control. Developed standards ISO-9000 through ISO-9004
	Lead Free	Dictates that a product has been certified as meeting a weighted average lead content of $\leq 0.25\%$ when used with respect to the wetted surfaces of pipes, pipe fittings, plumbing fittings, and plumbing fixtures.
	RoHS	Restriction of Hazardous Substances — and impacts the entire electronics industry and many electrical products as well.
	REACH	A regulation of the European Union, adopted to improve the protection of human health and the environment from the risks that can be posed by chemicals, while enhancing the competitiveness of the EU chemicals industry.
	UL/FM	Underwriter’s Laboratory — Tests and qualifies valve and fittings products under UL standards for safety. Factory Mutual — Develops standards and qualifies products for use by the general public.
	USP	United States Pharmacopeia — Establishes written and physical standards for medicine, food ingredients, dietary supplements, and ingredients.

SVF Flow Controls takes excellence to a new level in the flow control marketplace.

Our extensive product range, highly knowledgeable staff, feature-rich website, digital initiatives and our ongoing customer-focused culture are all part of our role as the best supplier of valve and actuator technologies for demanding industries.

SVF products keep quality flowing all over the world in chemical, petro-chemical, power, pulp & paper, water/wastewater, oil & gas, refining, semiconductor, food & beverage, and pharmaceutical facilities and systems.

As an ISO 9001 certified company, we are committed to quality and continuous improvement in all that we do.

Don't see what you need? No problem! Custom designs and products created to meet exact specifications are our specialty. We welcome all inquiries and consultation needs, and guarantee that our team will work diligently to satisfy your requirements.

Product pricing and availability

U.S. and Canada:

Sales@SVF.net

Latin America:

LatinAmerica@SVF.net

¡Llámanos! ¡

Hablamos español!

Worldwide:

International@SVF.net

Technical Support:

Engineering@SVF.net

World Headquarters

SVF Flow Controls

5595 Fresca Drive, La Palma, CA USA 90623

Toll Free: 1.800.783.7836

On the web: www.SVF.net



Valves | Actuators | Controls

