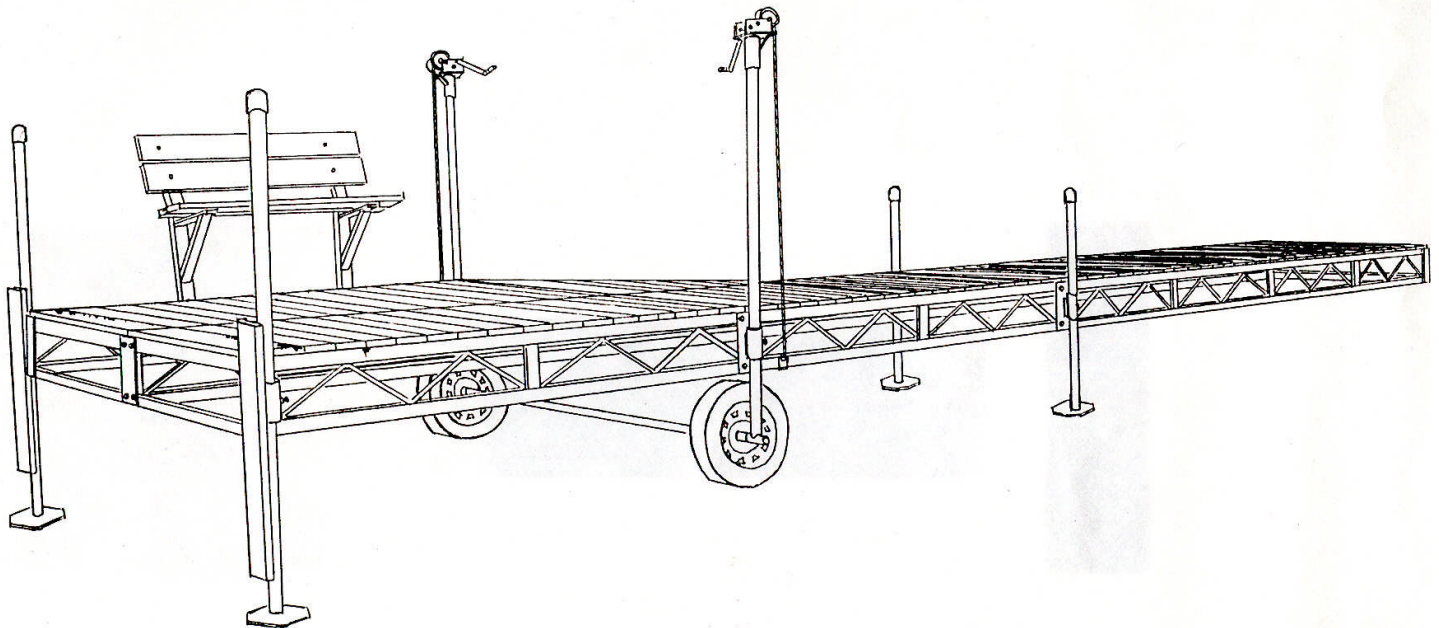


# Vibo

*Docks & Lifts*  
MANUFACTURER SALES

## ASSEMBLY INSTRUCTIONS

### Roll-in Docks



# Operating and Safety

## Instructions

**\*\*\*Do not operate dock without studying the operating and safety instructions first\*\*\***

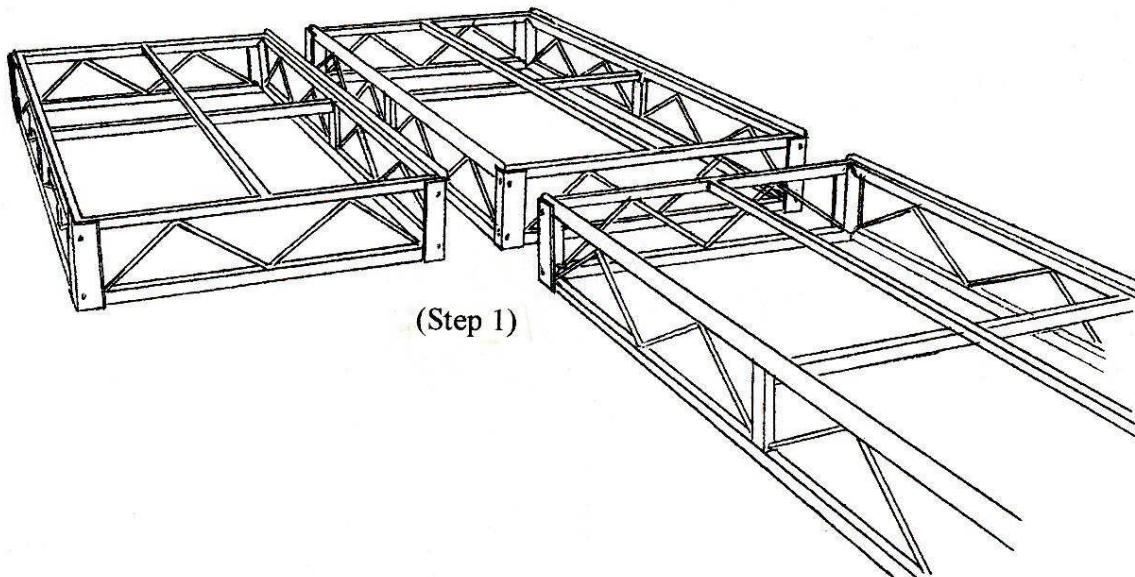
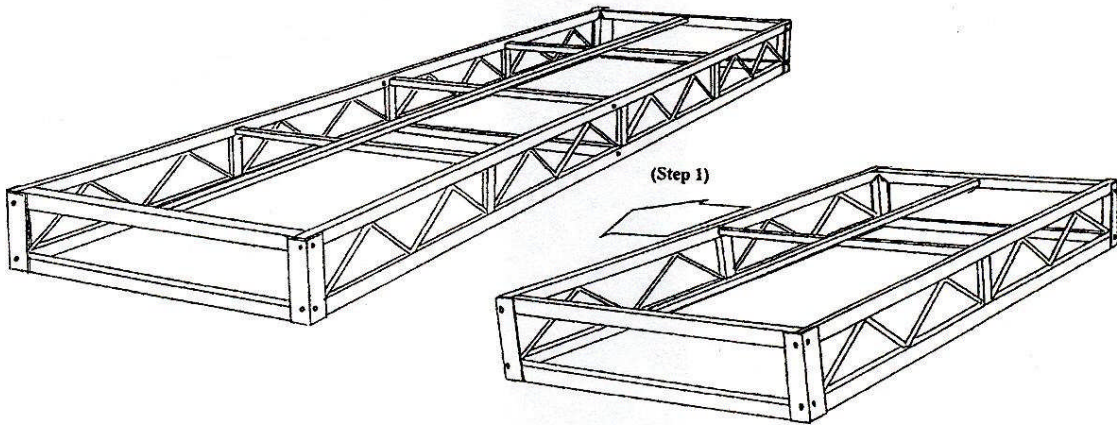
1. Be sure to check all the nuts and tighten all that require tightening. Check the cable, winch, tires and support posts to make sure that they are all in operating condition. Be sure to check these points yearly.
2. When operating the winch, never let go of the winch handle. **Never try to stop the handle if it does spin uncontrollably.**
3. Make sure that all the set screws are tightened tight so the posts do not slip. But, never tighten the set screws too tight as to where it makes indents in the support posts.
4. Never overload the number of people and weight on the dock at one time. This is to avoid injury and damage to property.
5. When adjusting the height of the dock while on the water, make sure that no one is on the dock.
6. If there is resistance when raising or lowering the dock, it is more than likely the posts are binding in the brackets. Stop winching and go the opposite direction that before until the bind is free.
7. For yearly maintenance be sure to grease the moving parts of the winch.
8. When the winch is not in use, place in storage. This is to prevent any injury, damage to the winch or theft.
9. Never lower the winch to where there is less than three spins of cable. This is so the cable won't slip out causing the dock to fall.

# Procedure 1

**\*For the assembly of the straight dock see procedure 1A.**

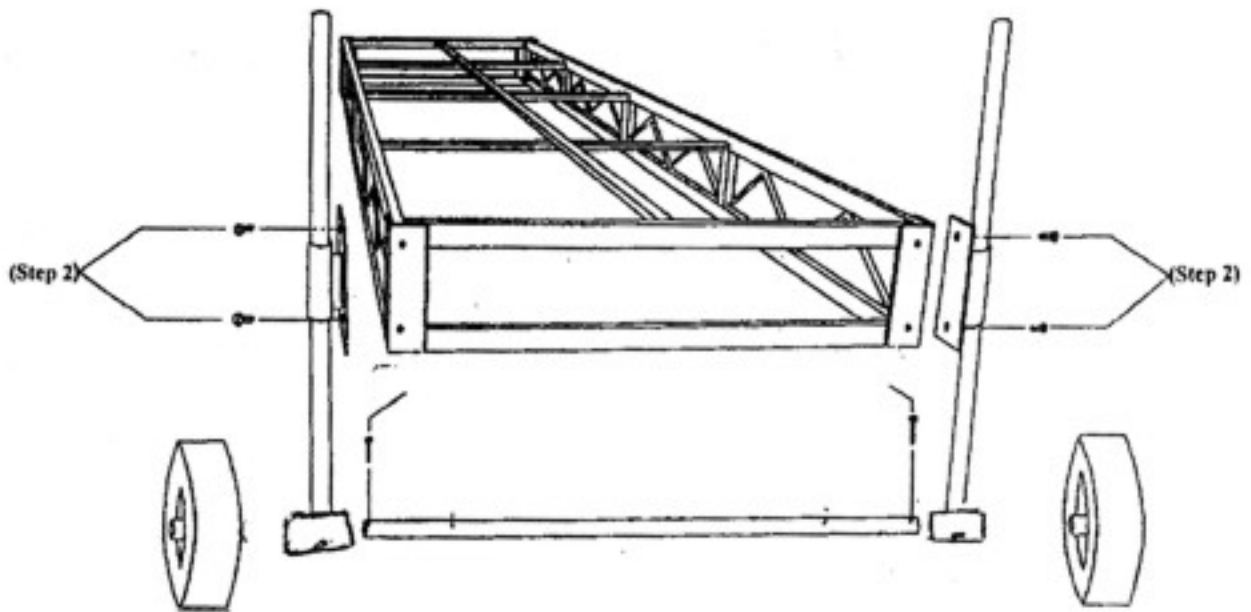
**\*For the assembly of a dock with a 8' x 12' deck, a 4' x 8' T, see procedure 1B.**

(Step 1) Lay the 4' x 16' dock section and the 4' x 8' section on the ground, the 4' x 8' section should be on the side you prefer to have the deck on. After you lay the two sections together, use two 3/8" x 1" bolts to fasten the front end of the dock together. If your dock contains a 4' x 8' section as part of the overall length, (example: 4' x 24', 4' x 40', 4' x 56' etc.), bolt the two 4' x 8' sections side by side on the lake end of the dock.



# Procedure 1A

(Step 2) Lay a 4' x 16' dock section on the ground, on the end facing the lake, bolt the wheel kit posts on using the 3/8" x 1" bolts.



## Dock wheel kit axle assembly



Slide the wheel kit saddle bracket onto the dock post and tighten the two set screws.



Straight dock wheel kit  
(Wheels are on the outside of the dock)



"Patio" & "L" dock wheel kit  
(Wheels are on the inside of the dock)



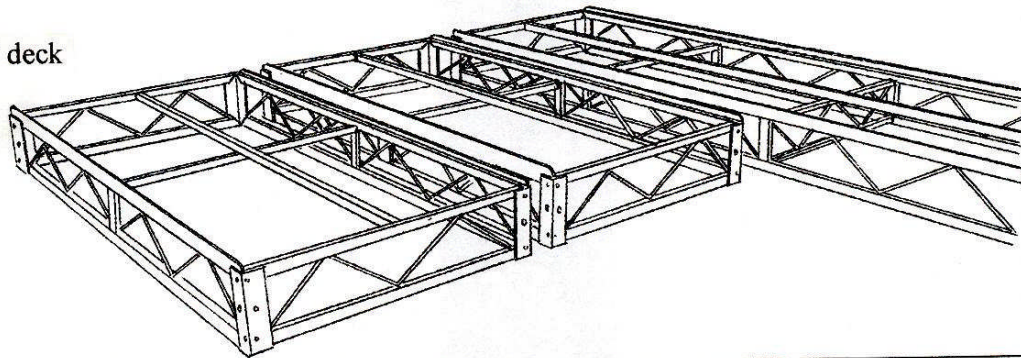
# Procedure 1B

(4' x 12' deck) Lay the 4' x 16' dock section on the ground and place the two 4' x 8' sections beside the 16' frame on either side which you prefer. Using the 3/8" x 1" bolts, begin connecting the two 8' frames together and the 8' frames to the 16' frame on the front end of the dock.

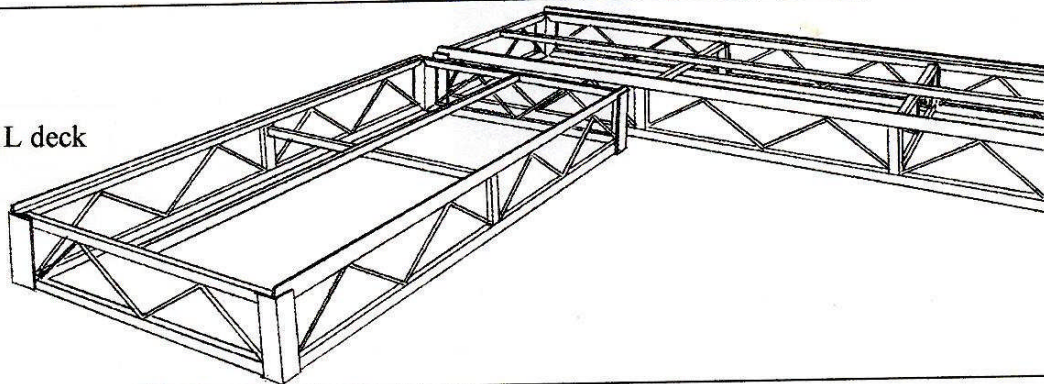
(4' x 8' L deck) Lay the 4' x 16' dock section on the ground and place the 4' x 8' section beside the 16' frame running lengthwise as shown below. After you lay the two sections together use two 3/8" x 1" bolts to fasten the front end of the dock together.

(4' x 8' T deck) Lay the 4' x 16' dock section on the ground and place the 4' x 8' section lengthwise in front of the 16' frame as shown below. Using the angle clamp brackets, clamp the 8' section to the 16' section.

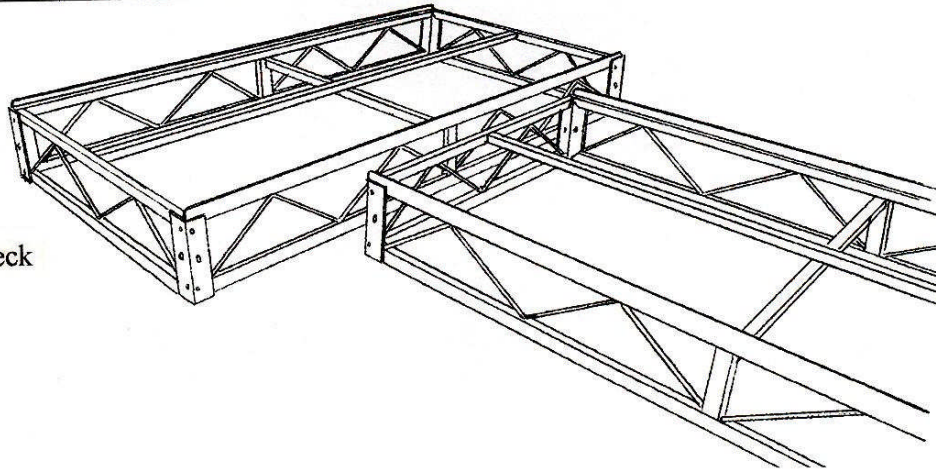
4' x 12' deck



4' x 8' L deck

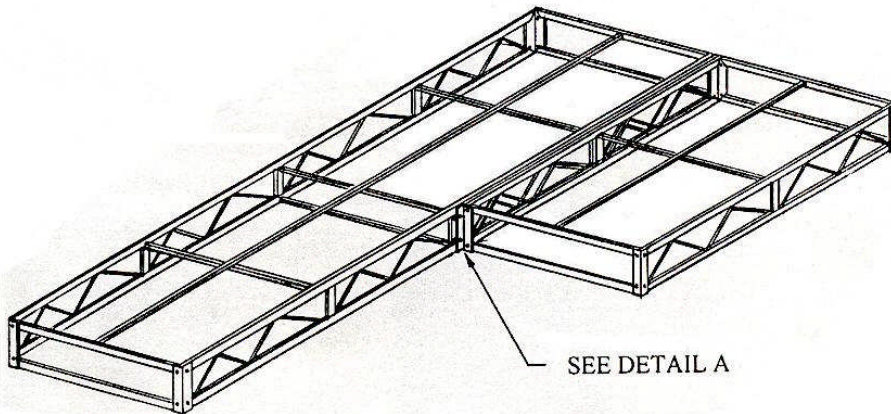


4' x 8' T deck

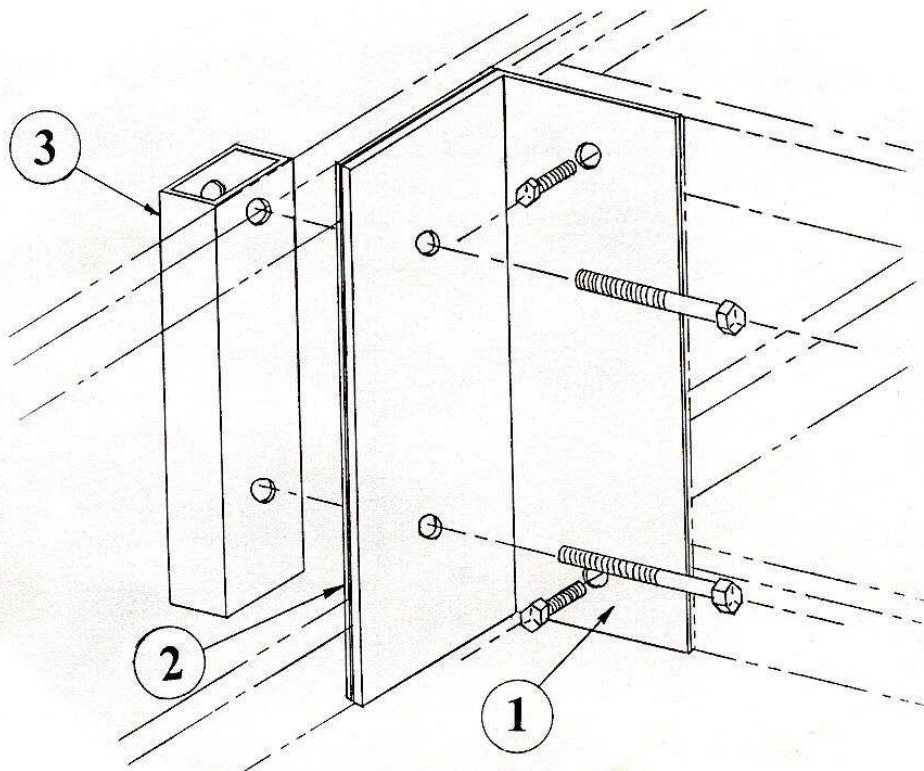


# Procedure 2

(Step 2) For bolting the back corner of the 4' x 8' dock section to the side of the 4' x 16' section, use the bracket shown in detail A. The first step in using this bracket is to bolt the part labeled in number 1, in detail A to the 4' x 8' dock section. Then using the 3/8" x 3" bolts, fasten the part labeled number 2 between the part number 1 and the 16' dock section. When this has been done, tighten the bolts so that part number 1 and part number 3 create a clamp with the side of the 4' x 16' section and part number 2 in the middle.

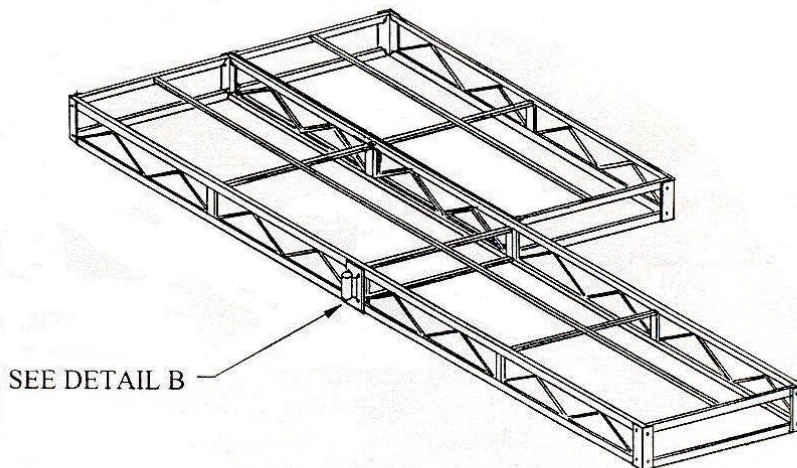


DETAIL A:

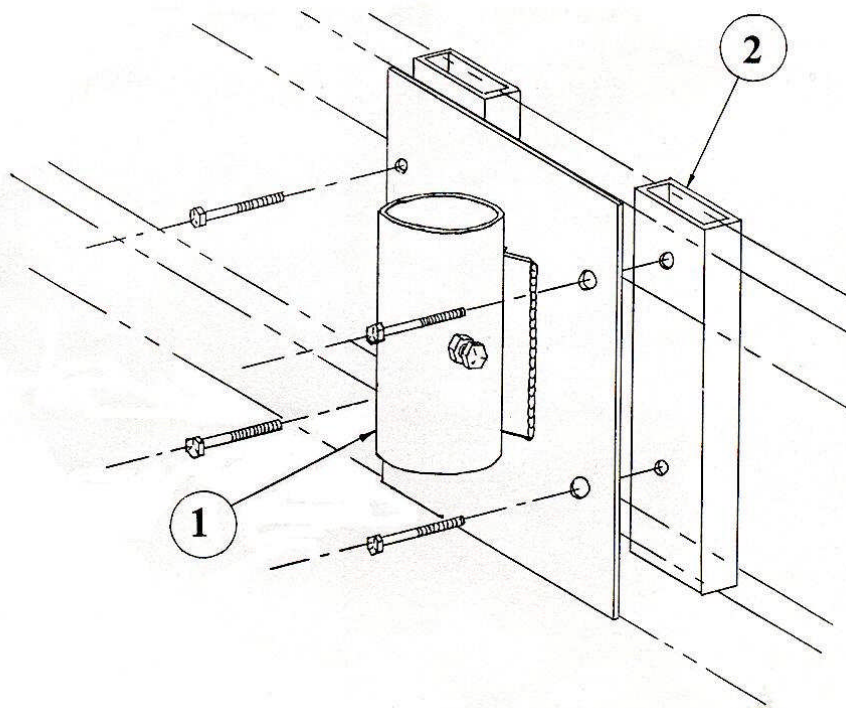


# Procedure 3

(Step 3) This step is for bolting the wheel kit bracket to the side of the 4' x 16' section on the opposite side of the 4' x 8' section. To bolt the part labeled number 1, use four 3/8" x 3" bolts and place them through the four holes on the part number 1. Next, slide the parts labeled number 2 onto the bolts and fasten with 3/8" nuts. Tighten the bolts so that a clamp is formed with part number 1 and part number 2 with the side of the 4' x 16' section in the middle.



DETAIL B:



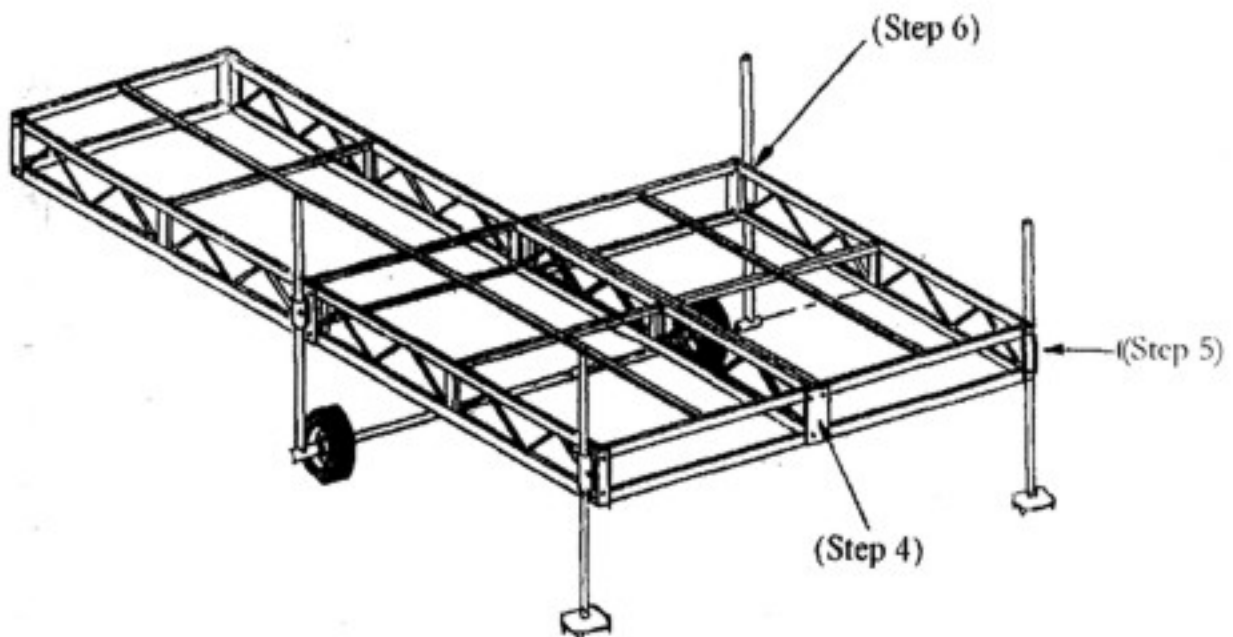


# Procedure 4

(Step 4) After the two sections are connected side by side, bolt the four holed aluminum plate using four 3/8" x 1" bolts to the front of the dock.

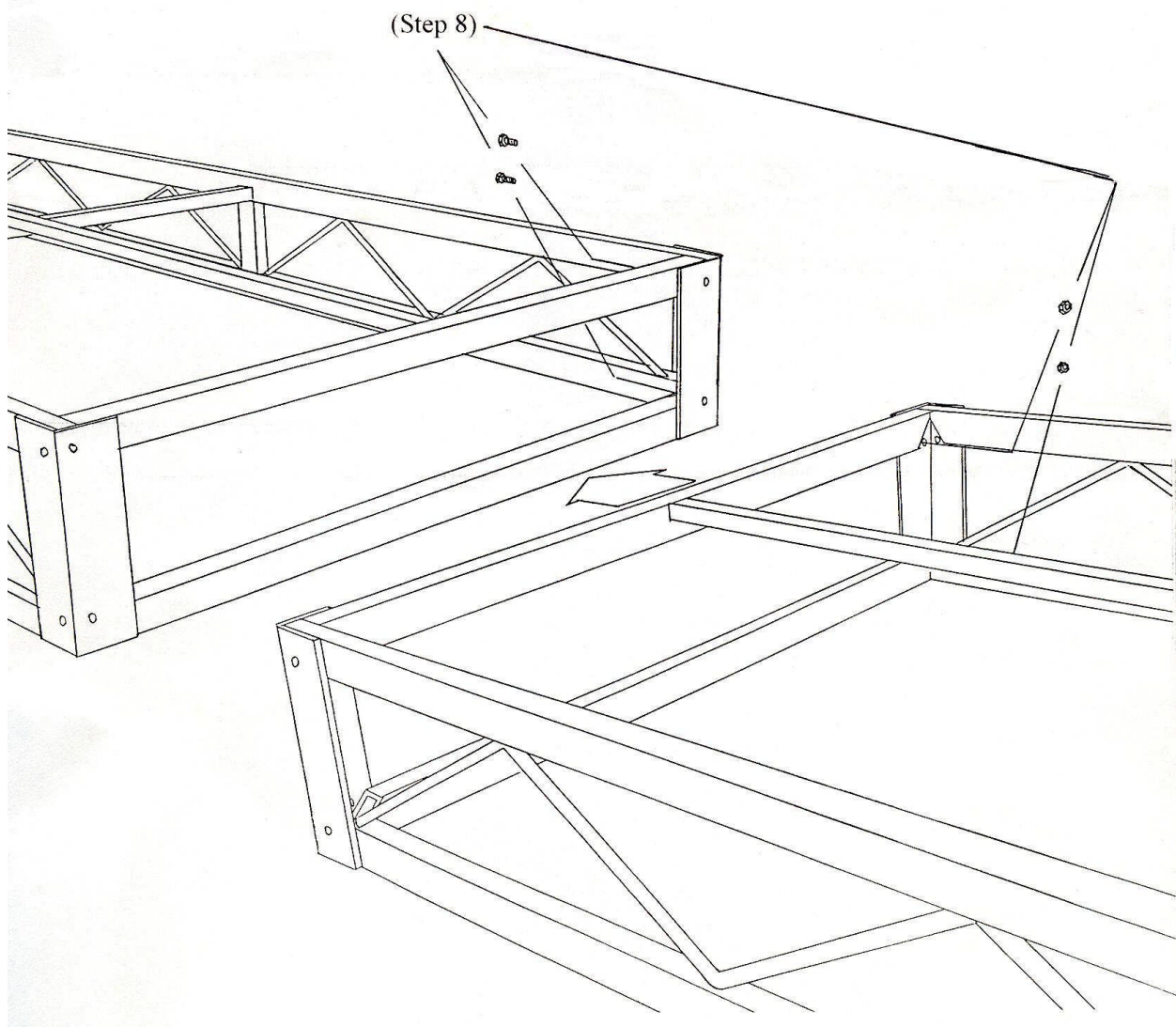
(Step 5) Fasten the two 7' support posts to the front end corners of the dock using 3/8" x 1" bolts. For ease of mounting the wheel kit, raise the front end of the dock and tighten the support posts.

(Step 6) On the rear corner of the 8' x 8' deck section is where the other wheel kit bracket is to be mounted.



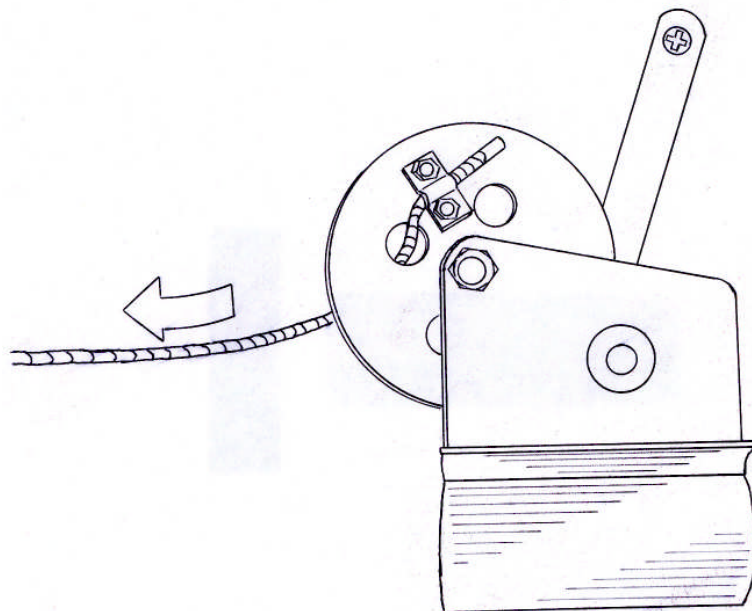
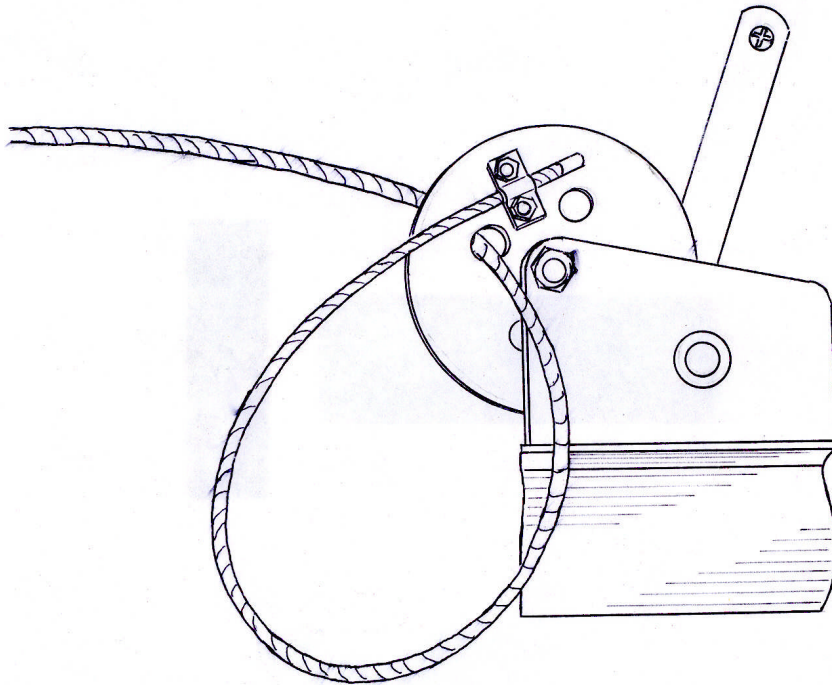
# Procedure 5

(Step 8) Once the front end of the dock is done, fasten the other dock sections using 3/8" x 1" bolts. At the conjunction of the two frames, connect the next set of support posts using the four holed dock brackets.



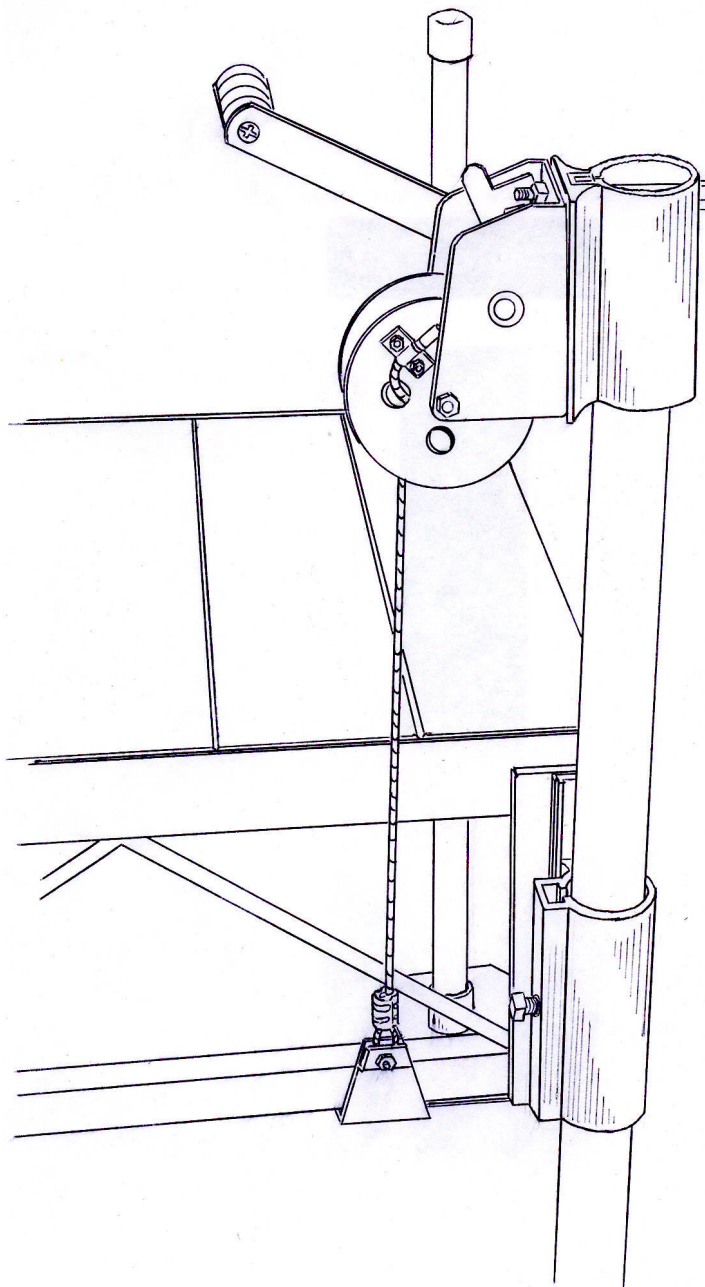
# Dock Winch and Cables

(Step 9) Run dock cable through the hole in the side of the winch drum, loop around and fasten down with dock winch clamps ( as shown below). When the cable is tightened down, pull out the excess.



# Procedure 6

(Step 10) When pushing the dock into the water, make sure that the wheel kit posts are down and the support posts are all raised and tightened. Once the dock is pushed out into the water, start laying the deck sections on one at a time, upon reaching posts with the decking, lower the posts by loosening the set screws. When the posts are lowered, slip the winch brackets with winch onto the posts, lower the hook cables and hook onto the lower tube of the dock section side. Crank the winch until the posts are at the desired height and tighten the set screws. After tightening the set screws, remove the winch from the posts and continue setting down deck sections until you reach the next set of posts. Repeat this procedure until all the posts have been adjusted and all the decking has been laid. Once all the height adjustments have been made remove winches and put away for storage.



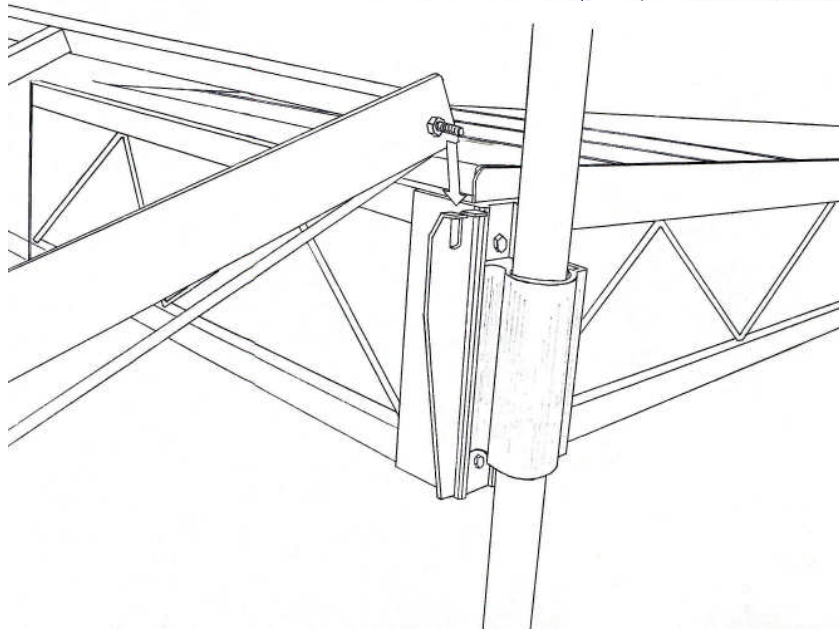
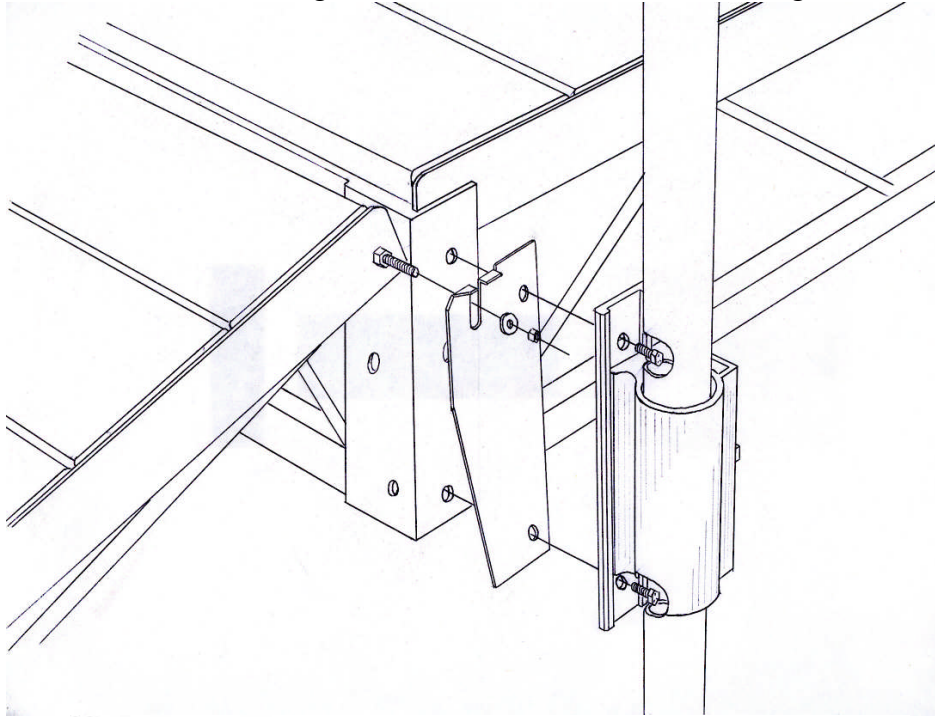


# 4' x 4' and 4' x 8' Ramps

## Dock Accessory

(Step 1) On the shore end of the dock, bolt the ramp brackets to the corners. If the shore end receives posts, bolt the posts on top of the ramp brackets as shown below.

(Step 2) The ramp will have two connecting bolts on the side of the ramp. Slip the ramp bolts into the groove of the bracket and tighten down with a washer and locking nut.



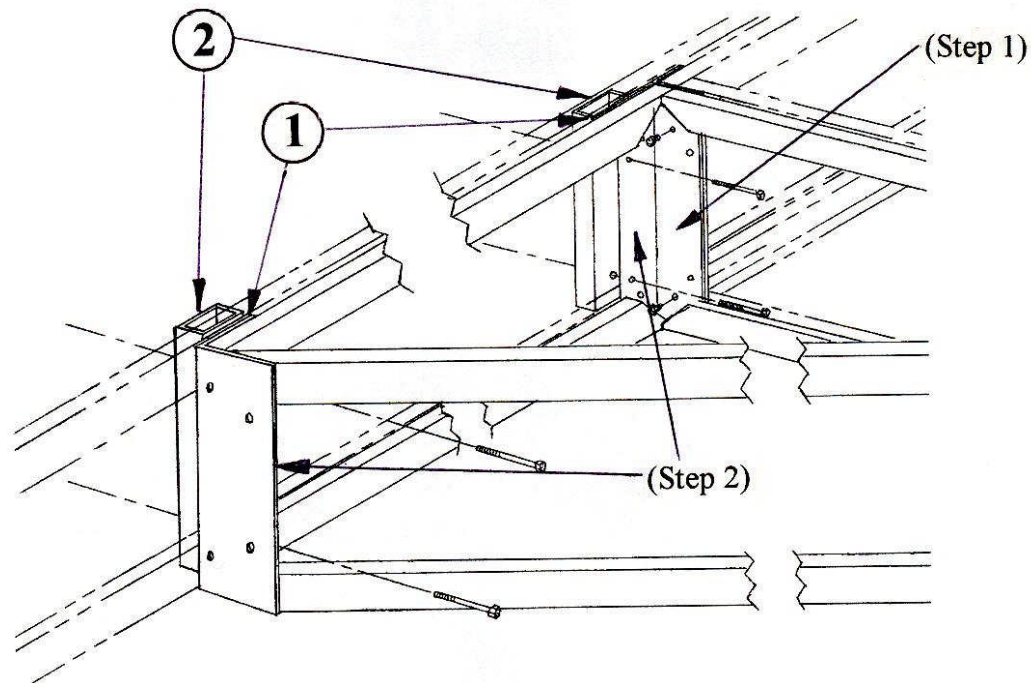
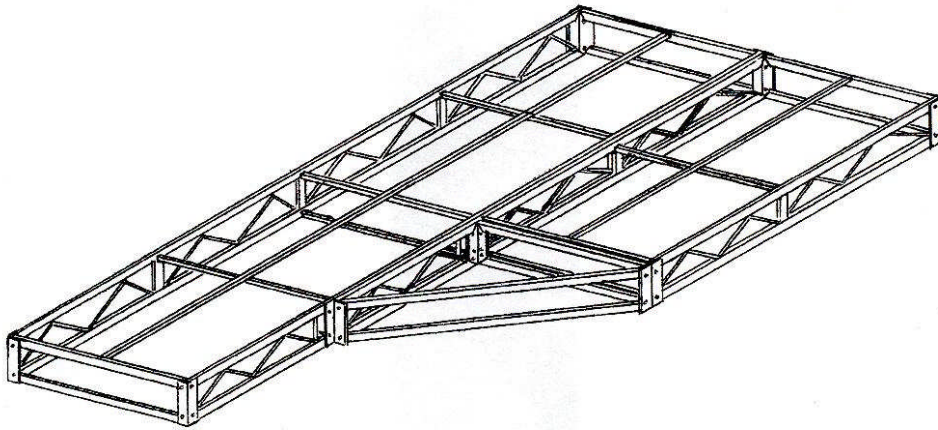
# Triangle Section

## Dock Accessory

**\*If the dock includes a corner section, use this procedure instead of the steps on the procedure 2 sheet.**

(Step 1) Using four 3/8" x 1" bolts, attach the corner section to the rear part of the 8' x 8' dock section.

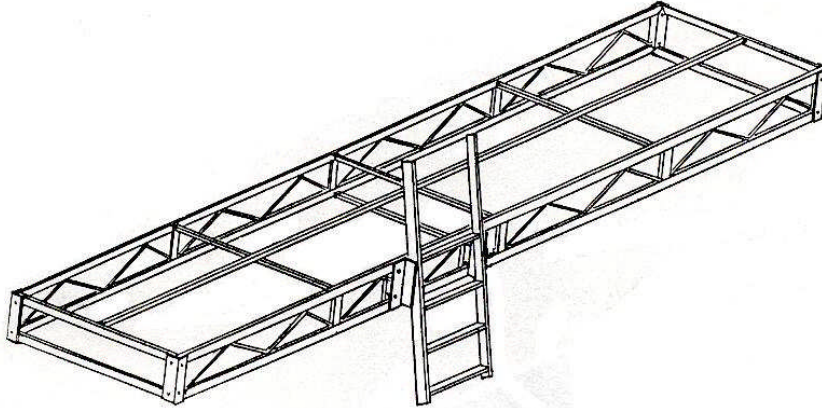
(Step 2) In the corners labeled "step 2" there will be four holes on the side of the angles facing the 4' x 16' dock section. Insert the 3/8" x 3" bolts through the holes that are closest together. Be sure that you bolt the spacer plate between the corner section and the dock section. On the inside of the 4' x 16' section, place the block labeled number 2 onto the bolts and tighten. This will then create a clamp for the corner section.



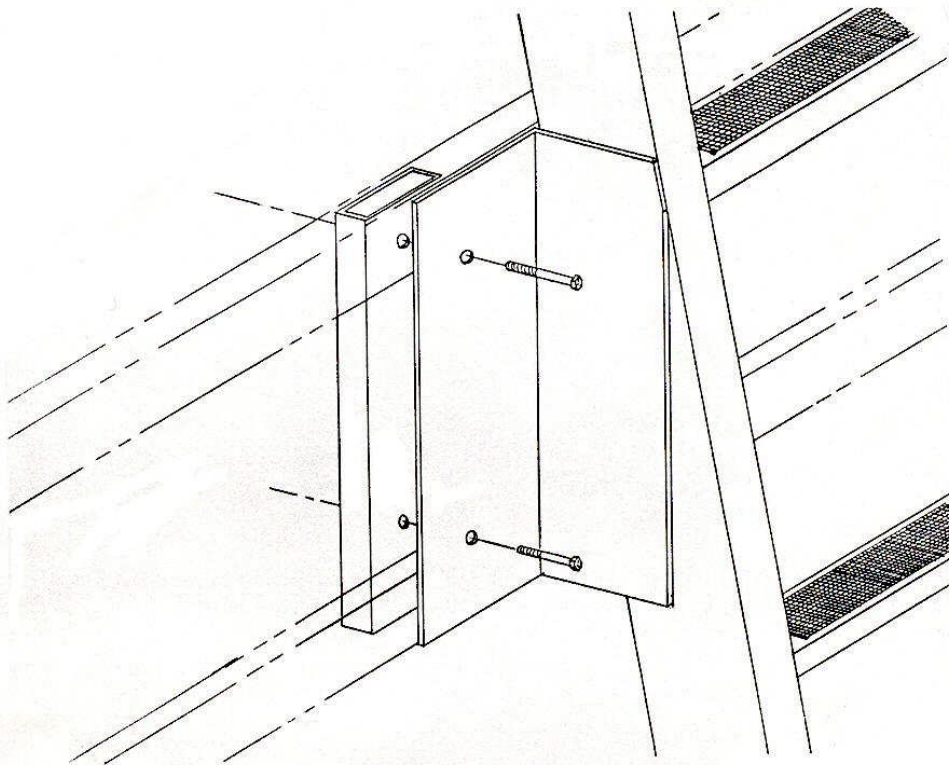
# Ladder

## Dock Accessory

(Step 1) Locate a spot on the dock where you would like to mount the ladder and have another person hold it in place. Insert four 3/8" x 3" bolts through the holes on the ladder. Place the block labeled number 1 on the bolts and tighten, creating a clamp with the dock section in the middle.



DETAIL A:



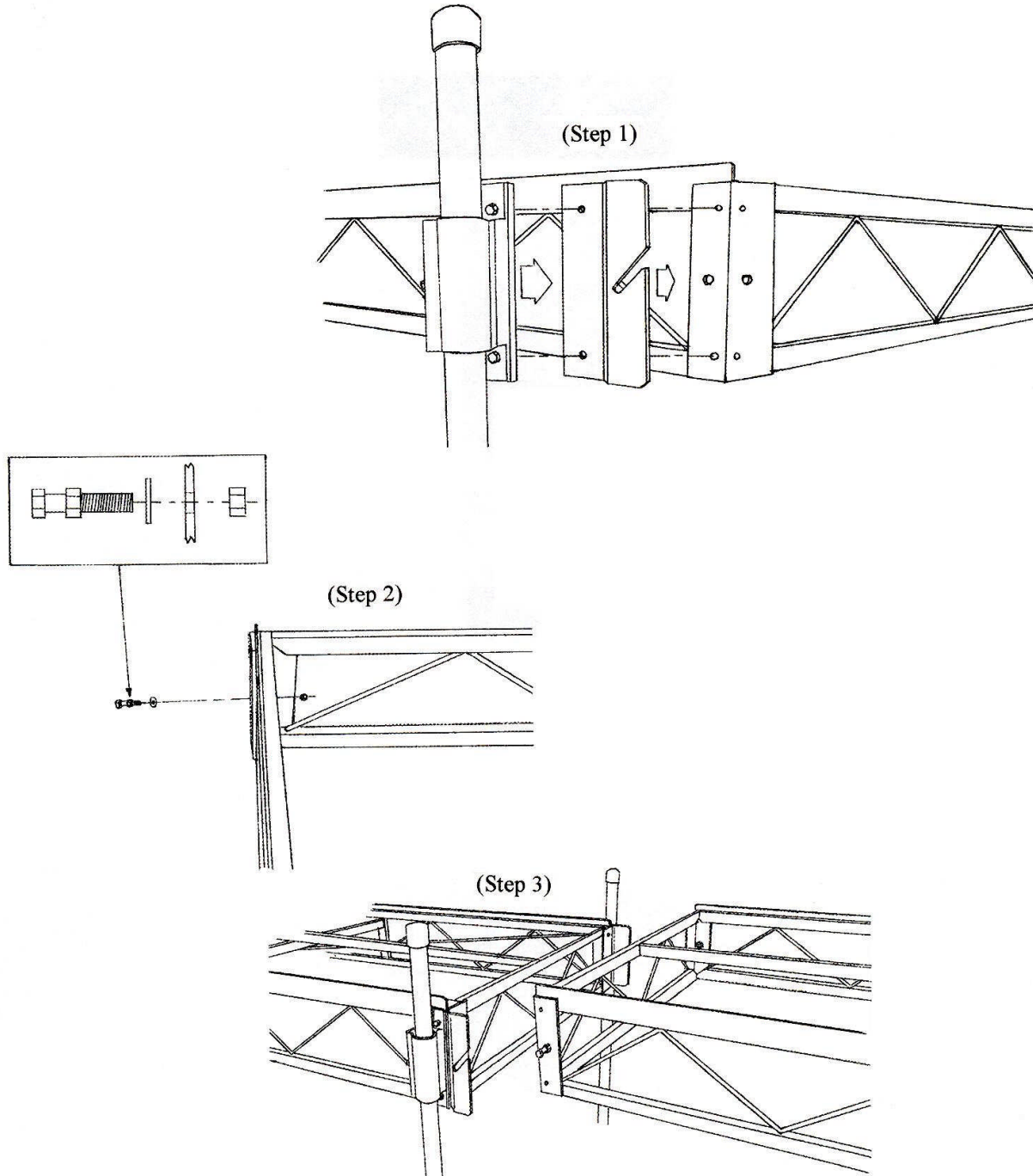
# Quick Connect Brackets

## Dock Accessory

(Step 1) Place the quick connect bracket on the end of the dock section at the point where you would like the dock disconnected at. Be sure that the flanges on the quick connect brackets face outward. Using four  $\frac{3}{8}$ " x  $1\frac{1}{2}$ " bolts, connect the dock bracket on top of the quick connect bracket, as shown below.

(Step 2) On the frame that will join with the quick connect brackets, bolt the  $\frac{1}{2}$ " x 2" bolt with the washer to the frame in the big hole on the side of the dock corner.

(Step 3) Once the posts have been adjusted, slip the frame with the pegs into the quick connect brackets.

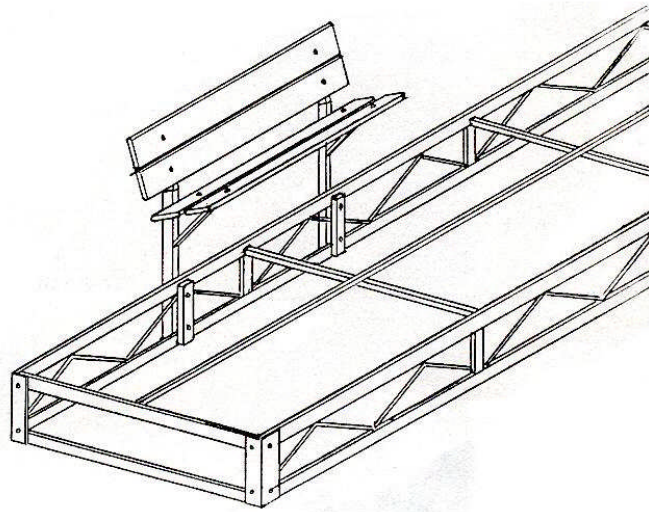




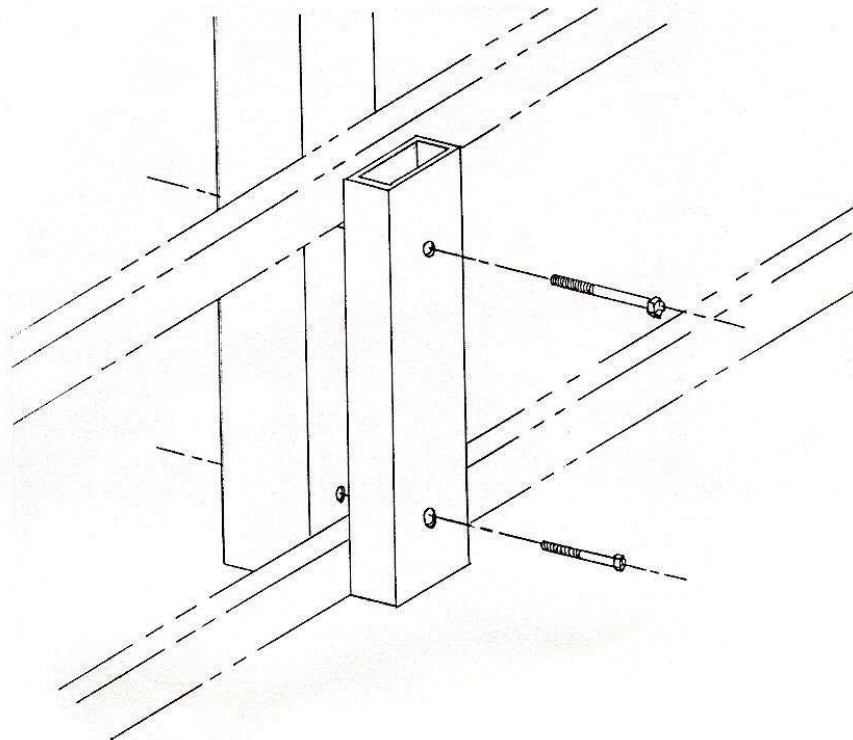
# Bench

## Dock Accessory

(Step 1) Locate a spot on the dock where you would like to mount the bench, have another person hold it in place. Insert four  $3/8'' \times 4 \ 1/2''$  bolts through the holes on the bench. Place the block labeled number 1 on the bolts and tighten, creating a clamp with the dock section in the middle.



DETAIL A:



# Dock Stairs

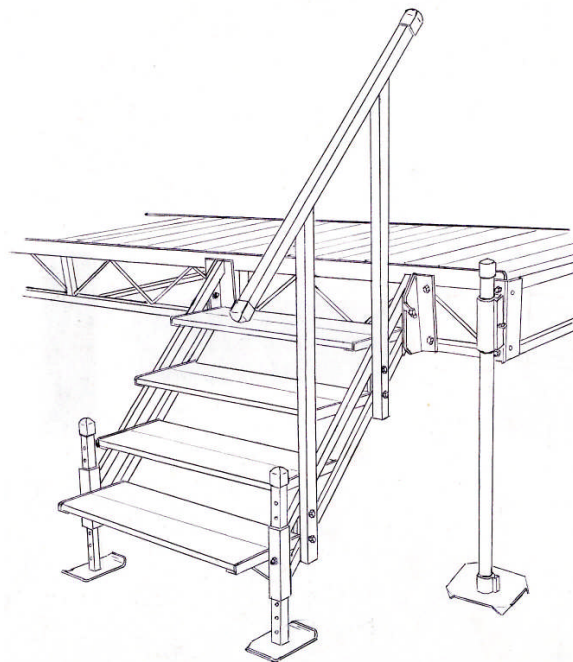
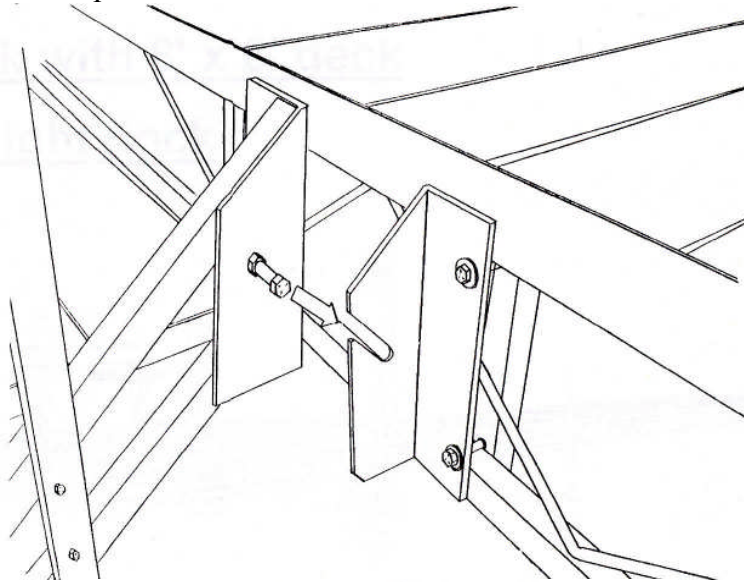
## Dock Accessory

(Step 1) Locate a spot on the dock where you would like to mount the dock stairs, clamp one of the quick connect angle brackets to the dock frame. To mount the angle bracket run the bolts through the frame and attach the block on the inside of the frame. Tighten the bolts and nuts to sandwich the frame between the bracket and the clamp block.

(Step 2) Space the other clamp the distance of the stairs and attach to the dock frame in the same procedure as the first. Bolt the quick connect pin to the angle piece on the stairs.

(Step 3) Slide the adjustable legs in the bottom section of the stairs, adjust to the appropriate height and insert the  $3/8'' \times 2 \frac{1}{2}''$  bolt and tighten.

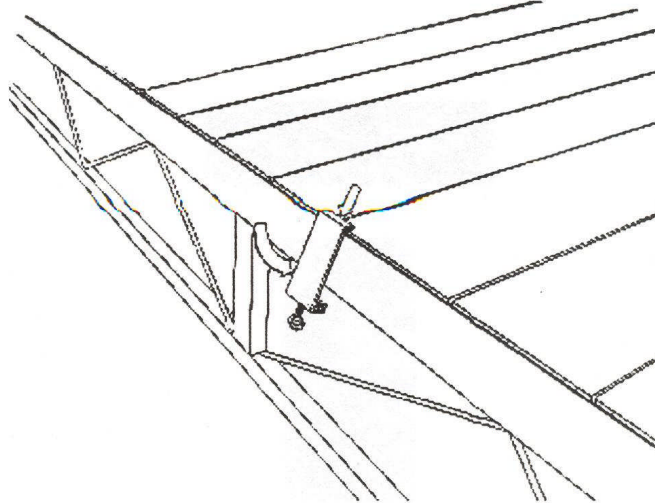
(Step 4) Drop the quick connect pins into the slots of the angle pieces and insert the locking carriage bolt to hold it in place.



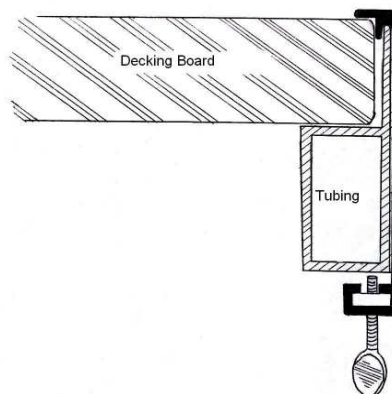
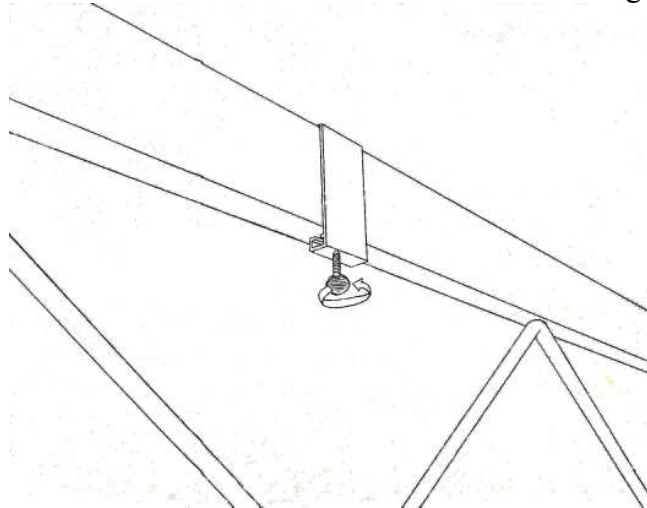
# Decking Clips

## Dock Accessory

(Step 1) Place decking clip as close to the center of the deck section as possible and overlapping two boards, for more coverage. Insert the top of the clip first and swing down the bottom under the frame tubing.



(Step 2) Turn the thumb screw on the bottom of the deck clip to tighten the deck in place. Repeat this procedure on all deck sections and on both sides of the decking.



# Vibo

## Docks & Lifts

MANUFACTURER SALES

### *Product Warranty*

Vibo Marine warrants all equipment purchased new by original owner, to be free of defects in the materials and workmanship under normal use from the date of purchase for the period of time set below.

New Vibo Marine aluminum docks and lifts carry a 10 year conditional warranty on all aluminum, aluminum welds and workmanship.

Vibo Marine further warrants all other parts used on Vibo lifts, docks and accessories, purchased new by original owner, to be free from defects in the materials and workmanship under normal use from the date of purchase for 24 months (excluding components and options which carry their own manufacturer's warranty, wherein that warranty will apply.) Excluded from this warranty are parts, such as hardware, pulleys, and cable accessories that wear from normal use. There is no other express warranty. Vibo Marine is not liable for incidental or consequential damages or injuries of any kind due to installation, removal, use, misuse, snow or ice, electrolysis, severe weather, acts of God, misapplication, or improper selection of one of our purchased or displayed products. Vibo Marine agrees to repair or replace only defective parts returned to the factory (shipping costs paid by the customer) and deemed defective by Vibo Marine. Warranty is void when misuse or neglect is the cause.

Vibo Marine is not responsible for removal, dismantling or re-installation cost. This warranty is void if the boat lift or dock is used in other than normal residential service, or installed in salt water.

Vibo Marine warrants canopy covers from the date of purchase for 1 year, to be free of defects in materials and workmanship under normal use. Fading of cover, misuse, snow or ice, severe weather and acts of God are excluded from the warranty.

All returns must be made to Vibo Marine within 30 days from date of purchase. All returns must be in new condition and deemed in new condition by Vibo Marine. Vibo Marine does not accept returned electrical equipment for refund or exchange. All other returnable parts or products are subject to a 15% restocking charge.

Vibo Marine warranty does not cover O.E.M. manufactured products. Most manufacturer's have their own warranty time periods.

The cargo net accessory is NOT intended for human use. Misuse may result in injury.

Stub axles are only intended for moving lift NOT to hold lift and vessel weight permanently. There is a 250 lb. maximum weight per axle.

All decking is warranted from the date of purchase for 1 year.

Vibo Marine warrants all lift wheel kits to be free of defects in the materials and workmanship under normal use from the date of purchase for 1 year.

Warranty is non-transferable.

Prices and specifications subject to change without notice.

## Aluminum Docks & Boat Lifts

(651)674-2383 | 1-888-698-2300 | [www.vibomarine.com](http://www.vibomarine.com)