

GALILEE LUTHERAN CHURCH



JULY 2025

***WALKING WITH JESUS, SHARING
GOD'S LOVE AND GRACE,
SERVING ALL FAITHFULLY.***

JOIN US FOR WORSHIP

SATURDAYS AT 5:00 PM

SUNDAYS AT 9:00 AM

SUNDAY SCHOOL & ADULT

EDUCATION

ON SUMMER BREAK!



Table of Contents

Pastor Amanda.....	Page 2
News from the Leadership Board.....	Page 3
Weeding workout/Music Director.....	Page 4
Worship Service Help.....	Page 5
Galilee Happenings.....	Page 6-8
Pewaukee Farmer's Market.....	Page 9-10
Community Events.....	Page 11
Birthdays & Prayer list.....	Page 12
Calendar.....	Page 13
Who's who at Galilee.....	Page 14

PASTOR AMANDA APPLEHANS



So much of what I do as a pastor can feel quite antiquated. My office is filled with dusty old books that are so niche no one has even bothered to digitize them yet. A big part of my 4 years of graduate study were learning to read and translate not one but two dead languages – Koine Greek and Ancient Hebrew, and then once I knew how to read them, studying ancient writings in these dead languages.

I am also a keeper of ancient ritual. The things that I am trained to do in Christian community are rituals that go back centuries. Baptism, Holy Communion, funeral rites, marriage rituals, all old ceremonies that hold meaning for some, but hold only confusion and historical interest for others.

It can feel at times like the work that I do is separate from the rest of the world, and the concerns of everyday people. Until someone dies. Until some tragedy strikes. Until someone begins to question the importance of themselves, or even of life itself. It is at these moments that all the study of ancient peoples and their faith lives, and the lives of faith of people for many centuries, begin to hold value. When we are looking for a path forward – when we are seeking meaning in the senseless and random.

That's why I love the compass that Lutherdale is using as a symbol for the day camp they will be bringing to Galilee this year, titled, "God's Word, Our Guide." Because while theology is full of dusty old books and dead languages, the faith of those who have passed on is still vital and active today. The challenges we face are similar to challenges humanity has faced for millennia, and the strategies tried and wisdom earned by people of faith as they wrestled with God can point the way for us as we endeavor to walk forward in our life of faith.

So, come be a part of this vital life of faith at Galilee. Come to worship and hear the Word of God read from a dusty old bible. Come to Lutherdale Day Camp and hear the Word of God sung with the accompaniment of a twangy old guitar. Come and hear the Word of God as it comes into your life, reimagining who you are and what the world can hold for you. Come and feel the Holy Spirit as she moves through our community, enlivening our relationships and our very selves with her grace and mercy. Come and follow God's Word as it guides us through all that life has in store for us!

Yours in Christ,
Pastor Amanda

From the Leadership Board

Capital Improvement Fund

Thank you for your continued support of Galilee and our missions. Since our mortgage was paid off in May (Congratulations to us!), any mortgage-designated pledges and donations going forward will be added to our Capital Improvement Fund.

We have shared in the recent past that this Capital Improvement Fund is being launched to fund future expenses such as updating the HVAC systems, replacing the drive entry cover (porte-cochère) and parking lot pavement improvements. The Leadership Board will be assessing capital projects for the future and will keep you updated as we progress.

So, please keep the Capital Improvement Fund funding coming even though our mortgage is paid off!

Sunday Evening Service Coming

Years ago, when Galilee had two full-time Pastors, Galilee started offering a Saturday evening worship service in addition to two worship services on Sunday morning. During the MET process, while we were preparing to call a new Pastor, the ELCA Synod suggested our Saturday evening service might be difficult, logistically, for an interested Pastor with a family. Now that Pastor Amanda has been with us for more than a year, the Leadership Board brought this topic up to her and asked if a different evening service day would work better for her family. We also were interested in what our congregation thought about non-Sunday morning worship service days/times.

This is what prompted the Service Time survey that many of us participated in over the first few weeks in June to learn about our non-Sunday morning worship service time preferences. From the survey, there were many different thoughts offered but the majority of responses approved a Sunday evening service at 5:00pm, in addition to the current 9:00am Sunday morning service. This Sunday evening service would free up Saturday nights for congregational members and also allow members to attend service even if they were out of town for most of the weekend.

We will start this Sunday evening worship service on Rally Day, September 7, 2025 (the weekend after Labor Day weekend). At that time, the Saturday evening service will be discontinued. The last Saturday evening service will take place on Saturday, August 30th.

-Leadership Board

The Weeding Workout



Galilee is excited to announce we are offering a “FREE” fitness program...We are calling it “The Weeding Workout.” Galilee will supply equipment, such as gloves, a kneeling bench, trowels, and a collapsible bag for weeds, which can be found in the shed in the lower parking level. The combination is 2380. We also offer a compost for any weeds you would like to dispose of. This can be done individually or in a group and can be done anytime! All ages are invited to join in! It can be done once or as many times as you choose.

And as an added incentive, there will be a monthly raffle for all who participate. All you need to do is put your name on a raffle ticket each time you pull weeds and put it in the bucket. The drawings will be at the end of each month. This opportunity is a win-win for you and for the Galilee Gardens.

If you have any questions, please feel free to reach out to Penny Van Weele at (262) 366-8382 or pennyzurn@yahoo.com.

SUMMER MUSIC SESSIONS

INSTRUMENTAL. VOCAL. SOLO. ENSEMBLE.

MUSICALLY INCLINED?

YOU ARE INVITED TO SHARE YOUR MUSICAL GIFTS
AT GALILEE LUTHERAN CHURCH THIS SUMMER!

Email patricia@galileelc.org to set your date!

WE NEED YOUR HELP!

Worship services flow so seamlessly that it is hard to believe how many “moving parts” must be coordinated to make this happen. Of course, the Pastor plays the most significant role in this, but there are so many other things done by Lay Ministers, musicians, and many volunteers. We are extremely grateful to all who help to make this happen each weekend! Lately, we have been coming up short at times, and would like to train some new helpers in each of these categories...

Ushers – hand out bulletins as they welcome you to service. During service ushers help with the offertory and communion flow. They also actively monitor happenings to provide assistance to anyone in need and to be aware of any safety or security concerns. Ushers need to arrive 30 minutes prior to service.

Altar Guild – volunteers are responsible for setting up for service by properly “dressing” the table and getting the communion supplies set up. They also do clean up after services.

Assisting Ministers – These individuals assist the Pastor. In addition to helping serve communion, they are responsible for designated parts of the service, including the prayers of intercession.

Greeters – are individuals or families who arrive early (30 minutes prior to start of service) to greet everyone as they arrive for service. A friendly smile and greeting is all that is required!

Lectors – The first and second readings are presented by the Lector, who also leads the congregation in reciting the Psalm of the day.

Communion Assistants – Two adults are needed to help with the distribution of wine at Communion. The spoken words used are “This is the blood of Christ, shed for you.”

If you are interested in learning more about one of these positions, please contact **Diana Conway** at **262-366-5497** or dlmc@milwpc.com. You can be paired up with someone who can train you. Be aware that everyone who is doing this started with some hesitation and anxiety, but this is quickly overcome! Pick one and give it a try! Your help is needed and appreciated!



Want to help out for **worship services**? Use the SignUp Genius for Galilee to schedule as an usher, assistant minister, altar guild, greeter, or a reader. You can also find sign up slots for the **Pewaukee Farmer's Market**. Paper sign up clipboards available in the Narthex.

Galilee Happenings

The Healing Prayer, Education Hour, & Godly Play
are on summer break



We are on summer break for June, July, & August!

Thank you to all who participated this past year.

Look for an announcement in August as to when things
will start up again for fall Services!



Galilee's Go-Getters

Next Gathering will be on **Thursday, July 10th**

Please join us for worship, lunch, and conversation!

All are welcome!

Please contact Carole Brinkman at
carole.brinkman@yahoo.com



LOSS & LIVING GATHERING - TUESDAY, JULY 15, 2025 | 3:00 P.M.

Please join us in the Narthex on May 20th at 3 p.m. We listen, share, comfort and support each other through the loss process, even though our losses may be different. The Gathering is not limited to the loss of a loved one but includes any loss that affects us emotionally or physically. This could be a loss of a job, the move to a new location, the loss of a dream, a pet, a relationship, a material or physical loss, retirement or a life change. We care for each other, understand and give support. Your faith and insight may have a profound impact on our journey of healing. If you know of someone who might benefit from this living with loss, please invite them to join us.

If you have any questions, please contact Barb Barthel at 262-691-0711.



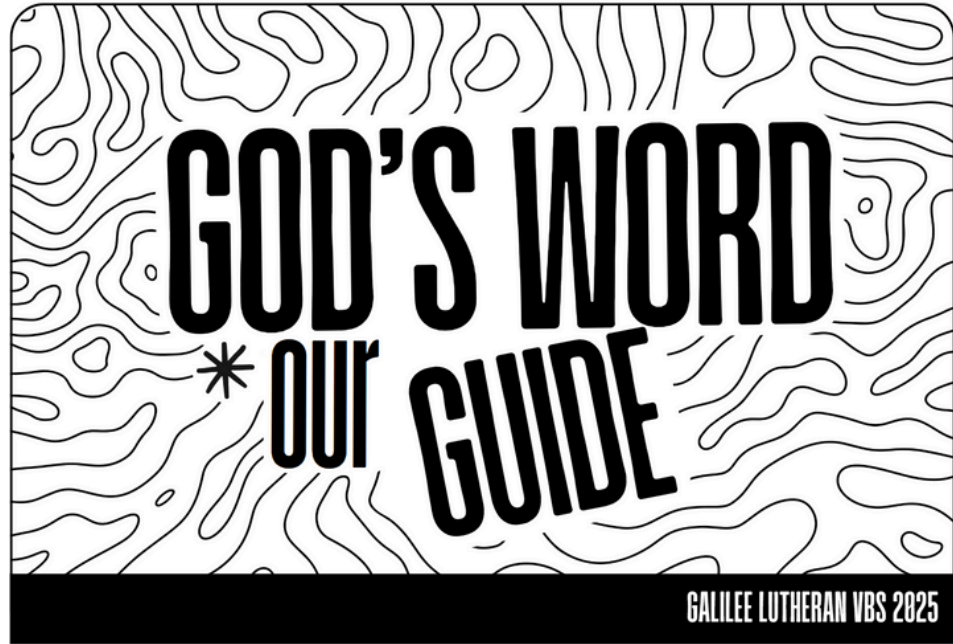
Ministry Coordinators

Monthly Meeting - Tuesday, July 15

Galilee's Ministry Coordinators meet on an every-other monthly basis with Leadership Board Members to share updates on their ministry areas, highlight upcoming events, and have great conversation with a lot of laughter!

Meet in upper level Gathering Place at 6:15pm.

Mon, July 7- Thurs, July 10 | 1-5 pm



Sunday, July 6 | 3-6pm

Kick-Off Campfire Carnival

Monday, July 7 | 6-8pm

Pizza & Games with Jr & Sr High Youth

Thursday, July 10 | 5-7pm

Closing Celebration Dinner

Open to All!



Lutherdale Day Camp is a unique blend of outdoor and congregational ministry for children who have completed Kindergarten through 6th Grade with crafts, music, worship, games, Bible study fellowship, and recreation. No fee to register or participate. Activities for children 3 years old-Kindergarten also available!

Volunteer sign up's for adults are available in the Narthex. Please consider helping if you are able!

CHILDREN'S BOOK DRIVE

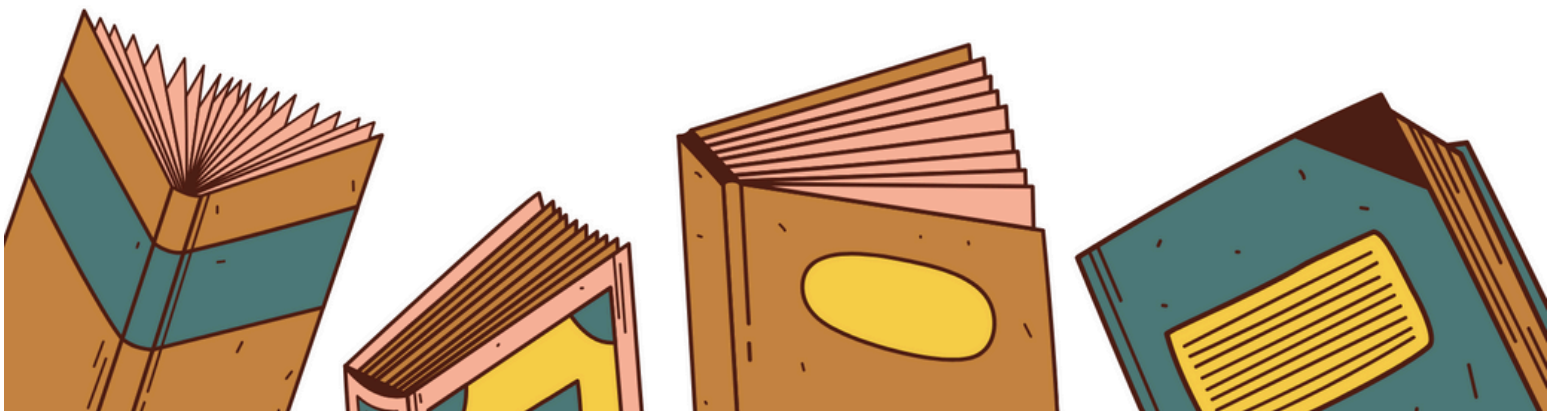
Our church is holding a book drive for gently used or new children's (pre-K to 5th grade) books. All books will go directly to families through the Capuchin Community Services organization.

Access to books is a large factor in children's success in learning to read and makes it far easier to build the 6 skills that children need to be able to learn how to read.

25% of adults in Milwaukee County read at a 3rd grade level or below. Please consider donating. Your generosity has the potential to make a significant impact on these children and their families.

"We attend simply and directly to spiritual and other basic human needs, especially those of people experiencing poverty and disenfranchisement, promoting justice for all." - Capuchin Community Services Mission

Collection boxes for this drive were provided by Emily, a local Girl Scout working on her Gold Award, and built in collaboration with local troops.





Pewaukee Farmers Market in Full Swing! Looking for Volunteers Each Week

We are looking for more help in three main areas:

1. Opening the Market – includes setting up signs in front of Galilee on Monday/Tuesday and setting up the Information/Music Tent(s) and table/chairs/supplies in tent(s) on Wednesdays between 2:00pm and 3:00pm.
2. Working During the Market – includes tending the information tent by tracking visitor visits on Reward Cards, answering questions, greeting shopper/directing traffic in the parking lots, and helping with activities in the Kids Tent on Wednesdays between 2:30pm and 4:30pm or 4:30pm and 6:30pm.
3. Closing the Market – includes removing and storing information/music tents, tables/chairs/supplies and removing and storing signs in front of Galilee on Wednesdays from 6:30pm-7:00pm.

Volunteer sign-up sheets are in the narthex.

You can also sign up online at

https://www.signupgenius.com/go/30E0D4CAC_A923A0F49-49532240-2024 or via the QR code.

Questions?

Contact Carole Brinkman

carole.brinkman@yahoo.com or (262) 352-7892

Steve Dethloff

dethloff5@gmail.com or 414-315-7555

Looking forward to hearing from you,
Steve Dethloff and the PFM team



This Year's Vendors include:

- Bub's Brews
- Chaviano Craft Bread Co.
- Creative Renovations
- Connect Chiropractic
- Fiddlesticks
- Happy Tails
- Jen's Sweetmix
- Java Twist, LLC
- L'Bri Pure n' Natural
- Moleta, LLC
- Momsen Woodworking
- Of the Land, LLC
- 99 Tasty Eats, LLC
- Sassy Sweets
- & more!



Join us at the Galilee Lutheran Church parking lot during the Pewaukee Farmers Market and help save lives one pint at a time!

Wednesday, July 2 | 3:00 PM – 6:45 PM

Wednesday, Aug 6 | 3:00 PM – 6:45 PM

Wednesday, Sept 3 | 3:00 PM – 6:45 PM



Community Events



Mt. Meru Partnership Monthly Meeting

A general partnership meeting is held on
the second Saturday of each month
beginning at 9am.

All meetings available via a Zoom link.



“Tee Up for Hope”

Annual Fundraiser for the Waukesha Hope Center

Monday, July 14th
at Broadlands Golf Club

Join us for a day of fun. Team scramble event with prizes, on-course events, free Hole In One contests on all par 3's, raffles and auctions - and a lunch buffet and post-golf heavy hors d'oeuvres social!

Register at <https://e.givesmart.com/events/CGm/>



Celebrating 25 Years of WISDOM
Empowering Through Unity

August 7, 2025

VIP Reception at 5:30p.m. - 6:30p.m.

Event at 6:30p.m. - 9:00p.m.



Location: The Pfister Hotel
424 E. Wisconsin Ave, Milwaukee, WI 53202
Tickets and sponsorships available

Early bird special - \$75 per person
\$675 per table of 10

Purchase tickets at
bit.ly/wisdom25th



JULY BIRTHDAYS



July 1

Tom Reinke
Robert Taylor

July 2

Kayla Muron

July 4

Cori Goss

July 5

Chris Sherman
Mary Winter
Mitchell Smith

July 6

David Schwartz
Austin Schroeder

July 8

Joanne Wolf

July 9

Patricia DeBlaey
Matt Gahan

July 11

Meghan Miller
Karla Sloan

July 12

MacKenzie Schill

July 14

Robert Kozlowski
Carol Puestow

July 16

Nolan Geffers
David Schill

July 18

Trevan Higgans
Nancy Wojcicki

July 19

Terry Hartwig-Bieser

July 20

Christina Cotey
Connor Liek
Howard Taylor

July 21

Eric Osenga

July 22

Braelyn Plesh

July 23

Joaquin Estrada

July 26

Jennifer Barker
Sydney Austin

July 28

Terri Hofstede
Bill Barker
John Alters

July 30

Ann Austin

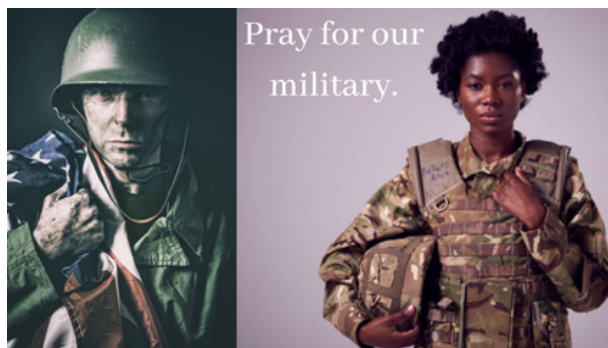
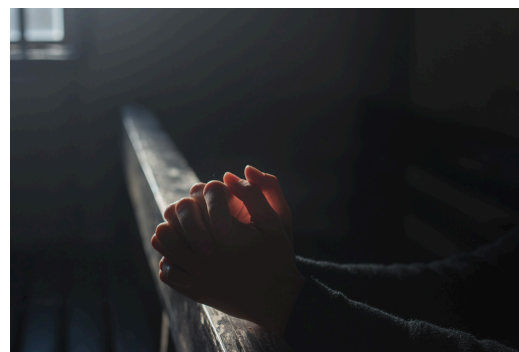
July 31

Kyle Osenga
Mary Benrud



PRAYER NEEDS

Please keep in your prayers - Patricia Alters, Eli Austin, Cathy Bartlett, Mary Benrud, Vicki Drover-Kaul, Donna Chudada, Pastor Joy McDonald-Coltvet, Isaiah Cramer, Kari Elizabeth, Donna Frederick, Raymond Hannula, Dan Heger, Paul Hintze Jr., Brian Klatt, Nana Koffi, Marjory Kloth, Bill Koehler, Margo Krumnow, Heidi Mag, Ray Mansker, Dan Maske, Barb McComb, Eliana Metzger, Marilyn Morgan, Kirk Mueller, Calla Nelson, Dennis Olson, Paul Osmundson, Justin Peare, Janet Praeger, John Ruf, Penny Williams, and Nancy Wojcicki.



Pray for our
military.

Mike Anderson
Andrew Connolly
Jeremy Fossier
Tim Gilestad
Bill Groth
Morgan Mosher
Andrew Richardson

Are you or someone you know in
need of prayer?
Simply contact the church office at
(262) 691-2380
or
email galilee@galileelc.org
with your prayer requests.

July 2025

Sun	Mon	Tue	Wed	Thu	Fri	Sat
29 Pastor Amanda on vacation <u>9a</u> Worship Service	30 <u>7:30p</u> AA - Fellowship Hall	1 <u>9:30a</u> Text Study <u>11a</u> Staff Meeting <u>3p</u> Blood Drive at PFM <u>3p</u> Pewaukee Farmer's Mark	2 <u>8p</u> AA - Room 41 <u>8p</u> Boy Scouts Troop 87 - Fe	3 <u>8p</u> AA - Room 41 <u>8p</u> Boy Scouts Troop 87 - Fe	4 Office Closed <u>12p</u> 12 Step Group - Room	5 <u>7:30a</u> Men's Bible Study - Fe <u>5p</u> Worship Service
6 <u>9a</u> Worship Service <u>3p</u> Day Camp Campfire Kick	7 Lutherdale VBS Day Camp <u>6p</u> Pizza & Games with Jr. & <u>7:30p</u> AA - Fellowship Hall	8 <u>10:30a</u> Staff Meeting <u>3p</u> Pewaukee Farmer's Mark	9 <u>9:30a</u> Text Study <u>3p</u> Pewaukee Farmer's Mark	10 <u>5p</u> VBS Closing Celebration <u>8p</u> AA - Room 41 <u>8p</u> Boy Scouts Troop 87 - Fe	11 Office Closed <u>12p</u> 12 Step Group - Room	12 <u>8a</u> Women's Bible Study - Fe <u>5p</u> Worship Service
13 <u>9a</u> Worship Service	14 <u>7a</u> Golf for Hope Outing <u>7:30p</u> AA - Fellowship Hall	15 <u>10:30a</u> Staff Meeting <u>3p</u> Loss & Living Gathering <u>6:15p</u> Coordinator's Meeting	16 <u>9:30a</u> Text Study <u>3p</u> Pewaukee Farmer's Mark	17 <u>8p</u> AA - Room 41 <u>8p</u> Boy Scouts Troop 87 - Fe	18 Office Closed <u>12p</u> 12 Step Group - Room	19 <u>7:30a</u> Men's Bible Study - Fe <u>5p</u> Worship Service
20 <u>9a</u> Worship Service	21 <u>1p</u> Knitters & Crocheters - Fe <u>7:30p</u> AA - Fellowship Hall	22 <u>10:30a</u> Staff Meeting	23 <u>9:30a</u> Text Study <u>3p</u> Pewaukee Farmer's Mark	24 <u>8p</u> AA - Room 41 <u>8p</u> Boy Scouts Troop 87 - Fe	25 Office Closed <u>12p</u> 12 Step Group - Room	26 <u>8a</u> Women's Bible Study - Fe <u>5p</u> Worship Service
27 <u>9a</u> Worship Service	28 <u>7:30p</u> AA - Fellowship Hall	29 <u>10:30a</u> Staff Meeting	30 <u>9:30a</u> Text Study <u>3p</u> Pewaukee Farmer's Mark	31 <u>8p</u> AA - Room 41 <u>8p</u> Boy Scouts Troop 87 - Fe	1 Office Closed <u>12p</u> 12 Step Group - Room	2 <u>7:30a</u> Men's Bible Study - Fe <u>5p</u> Worship Service
3 <u>9a</u> Worship Service	4 <u>7:30p</u> AA - Fellowship Hall	5 <u>10:30a</u> Staff Meeting	6 <u>9:30a</u> Text Study <u>3p</u> Blood Drive at PFM <u>3p</u> Pewaukee Farmer's Mark	7 <u>8p</u> AA - Room 41 <u>8p</u> Boy Scouts Troop 87 - Fe	8 Office Closed <u>12p</u> 12 Step Group - Room	9 <u>8a</u> Women's Bible Study - Fe <u>5p</u> Worship Service

MINISTRY STAFF

Pastor: Pastor Amanda Applehans, email: pastoramanda@galileelc.org

Director of Music & Worship Accompanist: Patricia DeBlaey, email: patricia@galileelc.org

Choir Accompanist: Jean Nelson, email: pianogirl1966@gmail.com

Financial Administrative Assistant: Karen Streit, email: finance@galileelc.org

Office Coordinator: Claire Johnson, email: galilee@galileelc.org

Church office is open Monday—Thursday 8:30-4:30pm

MINISTRY COORDINATORS

WELCOMING

Hospitality - Susan Keller & Vivian Dethloff | susieqz2@aol.com & dethloff5@gmail.com

Connecting - Mary Winter | marywinter1322@gmail.com

EQUIPPING

Worship & Arts - Diana Conway | dlmc@milwpc.com

Faith Formation - Pastor Amanda Applehans | pastoramanda@galileelc.org

Administration - Building & Grounds | Nicholas Riegert | riegs4@sbcglobal.net

Administration - Church Office & HR | Kathy Taylor | htmachine@centurytel.net

Godly Play - Sue Olson | olsonmsusan@gmail.com

SENDING

Partnerships & Global-Gifting - Deb Kohler | deb.kohler.mke@gmail.com

Compassion Care - Ann Dee Austin | anndeeaustin@gmail.com

Columbarium - Bill Braunschweig | bbraunschweig1@gmail.com

LEADERSHIP BOARD MEMBERS, 2025

Steve Dethloff - President | dethloff5@gmail.com

Mary Dehler - Vice President | biddymarka@gmail.com

Darrin Kehl - Secretary | dlkehl@quad.com

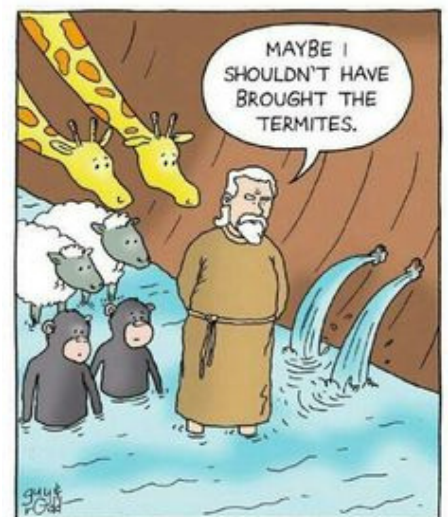
Carole Brinkman - Member at large | carole.brinkman@yahoo.com

Carl Spencer - Member at large | carlspencerv66@gmail.com

Andrea Smith - Treasurer | andreasmith3@wi.rr.com



Evangelical Lutheran Church in America
God's work. Our hands.



Galilee's monthly calendar is now available on our website. Go to <https://galileelc.org>, scroll down and click on the 'Church Calendar' button.

Galilee Lutheran Church

N24W26430 Crestview Dr.
Pewaukee, WI 53072