




# GALILEE LUTHERAN CHURCH

WALKING WITH JESUS, SHARING GOD'S LOVE AND  
GRACE, SERVING ALL FAITHFULLY.

 N24W26430 Crestview Dr. Pewaukee, WI 53072

 [galileelc.org](http://galileelc.org)

 [galilee@galileelc.org](mailto:galilee@galileelc.org)

 (262) 691-2380

DECEMBER 2024

## Table of Contents

Pastor Amanda.....	Page 2
Coming Up At Galilee.....	Pages 3-5
Thank You's.....	Pages 6-7
Family News.....	Page 8
Ministry & Staff.....	Page 9
Calendar.....	Page 10



This year Galilee will hold **two** worship services on Christmas Eve. We will have a **1:00pm family-friendly worship** service and a **4:00pm traditional candlelight service**.

I am excited to share with you a service that I wrote as a way to harness the energy and excitement of children on Christmas Eve to tell the story of Christmas. The service is called, "The 12 Gifts of Christmas," and tells the story of Jesus's birth using the contents of 12 different gifts unwrapped by children in the congregation. The service will include all the traditional elements of Christmas Eve – reading of scripture, Holy Communion, a candle-lit rendition of "Silent Night," all in a way that is accessible for the littlest among us.

The 4:00pm service will have all the traditional carols and readings that we are used to hearing on Christmas Eve. Pastor will preach her Christmas message, we will share Holy Communion, and we will close with the lighting of candles and singing of "Silent Night."

I am excited to celebrate Christmas here at Galilee for the first time! I look forward to walking with you through this time of waiting and expectation, and welcoming the one who brings true peace to earth.

Pastor Amanda

## PASTOR AMANDA APPLEHANS



It is hard for me to believe that it has already been almost a month since the first time I heard Christmas music playing in Target this year. I went in the day after Halloween and not every song was Christmas music, but I definitely heard “Rocking Around the Christmas Tree” during my short time there. And we are still a month from Christmas – the day we celebrate Jesus’s taking on of flesh and coming right down into the middle of our world to be with us in everything we face.

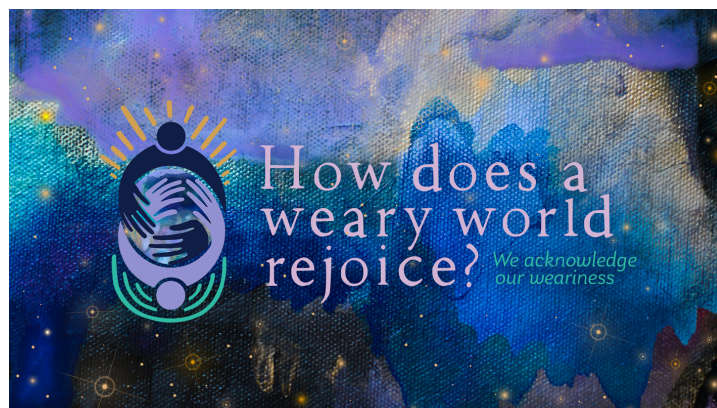
In a way, that “now but not yet” is the core of our Advent and Christmas seasons. We celebrate the coming of Christ, and the kingdom of joy and peace that he brings, all while living in this world that stands as a living testament to the fact that this kingdom is not yet fully realized. We bake cookies and sing songs about the little baby in the manger who has come to bring light and love to our world, and all the while we are surrounded with the same old stories – wars, crime, illnesses, poverty, and hunger at home and around the world.

So how does this weary world rejoice? This is the question that we will ponder during our Advent and Christmas time this year. We will be using resources from “A Sanctified Art” as we consider some of the ways our weary world can find joy. We will talk about acknowledging our weariness, finding joy in connection, allowing ourselves to be amazed, singing stories of hope, making room, rooting ourselves in ritual, and trusting our belovedness. As we consider these things, we will read from the Gospel of Luke the stories of two couples – Zechariah and Elizabeth and Mary and Joseph – who find themselves welcoming new life into their families under very different circumstances. We will follow as they find their way through the weariness of their situations and into the joy that God is bringing into their lives and into our world.

During this season you will see the main image of our theme many times. The image consists of two figures – one radiating joy and one mired in weariness – holding the world together between them. This image makes me think of a hug. One figure is filled with joy, and the other is heavy with weariness, and in their embrace they share it together. The weariness of one figure is easier to hold because the joy of the other helps to lighten the load. I think of the hug of welcome given by Elizabeth when Mary arrived to visit. Mary held so many worries – about her fiancé, about her standing in her community, about her path forward with this child – while Elizabeth felt so much joy – the long years of infertility finally over and the child she so desired in her womb. Joy and Weariness – Hope and Fear – Peace and Struggle holding one another.

How does a weary world rejoice? I’m not fully sure. But I think if we gather together, if we read stories of faith, and if we share all of ourselves with one another during this Advent season, we might understand a bit more.

Yours in Christ,  
Pastor Amanda



## COMING UP AT GALILEE



### WOMEN'S ADVENT GATHERING

The Women's Advent party will be on **Tuesday, December 3rd** at 6pm in the lower level Fellowship Hall for a night of laughter, fun, fellowship and singing Christmas Carols! Please bring an appetizer or dessert (beverages are provided). We will again be collecting items for The Women's Center. There will be a list of those items needed on tables in the Narthex.



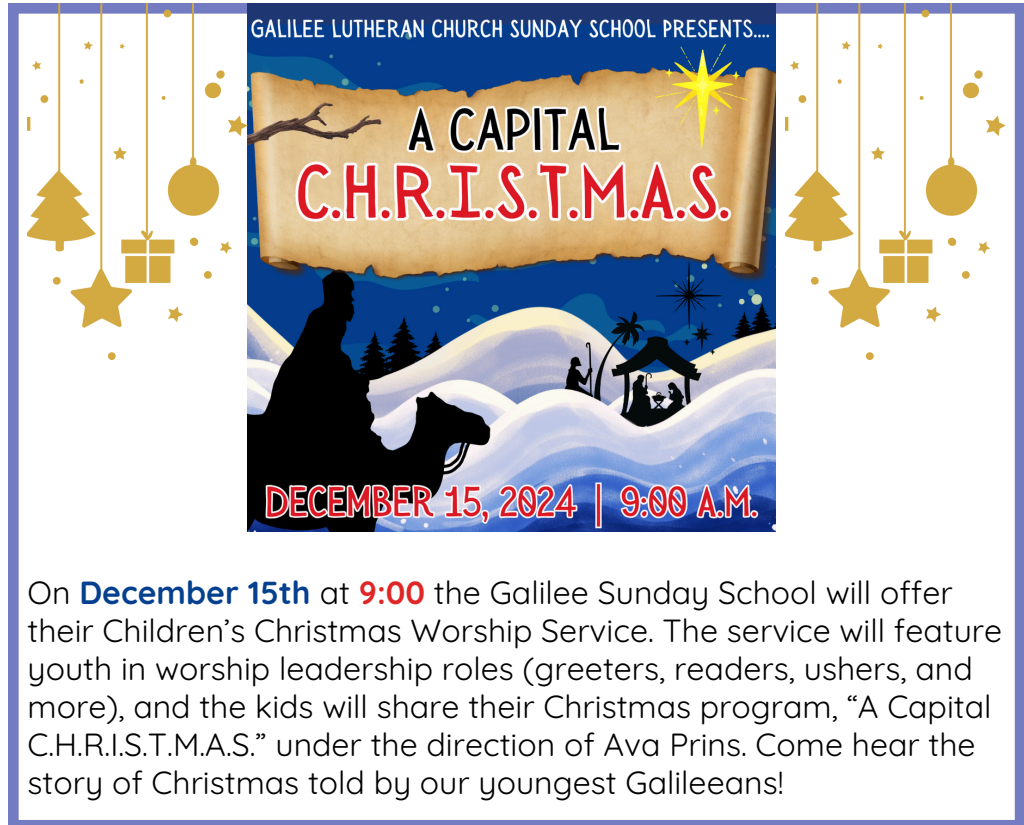
### DECEMBER 12 | 11:30 A.M.

Join "Go-Getters" on Thursday, **December 12** at 11:30 a.m. in the sanctuary for worship followed by a lunch in the Gathering Place.



share, comfort and support each other through the loss process, even though our losses may be different. The gathering is not limited to the loss of a loved one but includes any loss that affects us emotionally or physically. This could be a loss of a job, the move to a new location, the loss of a dream, a pet, a relationship, a material or physical loss, retirement or a life change. We care for each other, understand and give support. Your faith and insight may have a profound impact on our journey of healing. If you know of someone who might benefit from this living with loss, please invite them to join us.

**IF YOU HAVE ANY QUESTIONS, PLEASE CONTACT BARB BARTHEL AT 262-691-0711.**



On **December 15th** at **9:00** the Galilee Sunday School will offer their Children's Christmas Worship Service. The service will feature youth in worship leadership roles (greeters, readers, ushers, and more), and the kids will share their Christmas program, "A Capital C.H.R.I.S.T.M.A.S." under the direction of Ava Prins. Come hear the story of Christmas told by our youngest Galileans!



### GALILEE'S HAT & MITTEN TREE

**November 15 - December 15**

We will once again be collecting Hats, Mittens, Gloves, Scarves and gently used coats for low-income families. Please consider helping to keep our brothers \* sisters warm this winter season! For more info contact Partnerships Coordinator Deb Kohler (262) 844-6155 or email: [deb.kohler.mke@gmail.com](mailto:deb.kohler.mke@gmail.com).

### LOSS & LIVING - TUESDAY, DECEMBER 17, 2024 | 3:00 P.M.

Please join us in the narthex on **December 17th** at 3:00 p.m. We listen,





## WORSHIP SERVICE FOR THE WEARY | DECEMBER 21 | 5:00 P.M.

Christmas is for many a time of joy, peace, and happiness as they gather with friends and family far and near. But sometimes Christmas brings up for us thoughts and memories that range from bittersweet to difficult, and we struggle with the joy we see all around. On Saturday, December 21st at 5:00pm Galilee will celebrate "A Worship Service for the Weary," as a quiet space for reflection and connection with God in the midst of the difficult emotions we face. This space is for all – bring your grief, bring your sadness, bring yourself and receive the peace of God which surpasses all our understanding.



## 2024 ANGEL TREE

Dear Galileans, I cannot believe that the year 2024 is almost over! Soon it will be time for the Christmas shopping season to begin. I have contacted La Casa de Esperanza Daycare in Waukesha to start with a list of the children we will provide gifts for this year. Please find it in your hearts to add a gift for one of these children to your shopping list. I will have the tree up the Wednesday before **November 20th** by 5pm. You have been so generous in years past! Thank you in advance for your caring donations.

God's Blessings!  
Mary Winter



## CHRISTMAS CARDS FOR TOM BRINKMAN

We will have cards available on the table in the Narthex for Tom Brinkman who is residing at the OakHill Correctional facility. Take a minute to write a greeting and place the card in the designated basket and we will send them along to Tom. He really enjoys receiving the cards and hearing from his Galilee brothers and sisters.



## CHRISTMAS POINSETTIA ORDERS

Remember a loved one this Christmas by ordering a poinsettia plant to adorn the Altar. This traditional foiled 6 1/2" plant is being offered for \$10 each. Plants may be taken home after the later Christmas Eve Service. Order forms will be available in the coming weeks during worship.



## GALILEE LIBRARY ADDITIONS

The library has been gifted two books and cds from The Great Courses series. "The Book of Genesis along with the accompanying CD" and "The Fall of the Pagans and the origins of Medieval Christianity" with accompanying CD are now available for checkout in the library. Thanks to Pastor Jim Olia for his generous donation to our library. Stop in take a look around and see what else might catch your attention! Easy checkout- just sign the checkout sheet in the library! Any questions? Just ask: Sharon Vitek



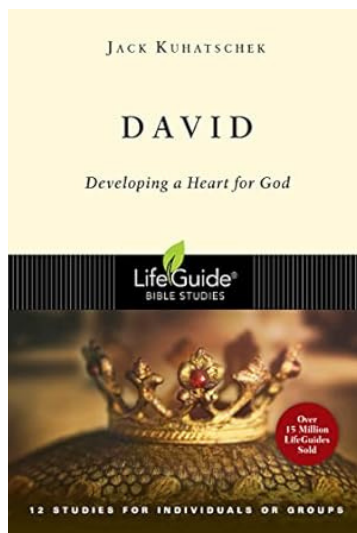
ANNUAL SUPPORT SUBMISSIONS DUE

**JANUARY 5, 2025**

Email reports to  
**GALILEE@GALILEELC.ORG**

ANNUAL REPORT SUBMISSIONS DUE | JANUARY 5, 2024

It's that time of year again! Annual Report submissions are due to Sam in the office by January 5, 2024. An email will be sent out with a reminder and with a copy of last year's Annual Report for your reference. To submit your report, email it to Sam at **GALILEE@GALILEELC.ORG**.



### MEN'S BIBLE STUDY

The Men's Bible Study group meets on the first and third Saturday mornings of the month from 7:30 - 9:00. We share a meal, good fellowship and conversation and encourage each other on our faith journeys.

On November 16th, we began a new study from the Life Guide study series, "David - Developing a Heart for God". David was a biblical hero, a shepherd, a musician, psalmist, king and ancestor of our Lord Jesus. He was also a man of many weaknesses, fears, doubts and sins. Despite his weaknesses and frailties, David was a man of faith. His story is an inspiration to us all.

Please join us at the Men's Bible Study as we examine the life of David. It may help you develop a greater passionate heart for God. Peace!



### TO THE LIGHTHOUSE

Part of Galilee's "Generous Living - Know Greater Joy" fall campaign was a stewardship play presented at worship on November 9 & 10. "To the Lighthouse" featured the following cast: Ava Prins, Charlotte Prins, Sally Rudolph, Roger Weiland, Trevan Higgins, Terri Drover, Isabella Estrada, Bev Wendling, and Ann Dee Austin as nine strangers who find themselves in a lifeboat after their cruise ship has become disabled. In order to safely row to shore, they need to combine their efforts, even though some believe they have little or nothing to contribute. Huge thanks to Karen Buelow and Penny Van Weele for creating a fabulous boat

for scenery, and to the cast members who wonderfully brought their characters to life. You may think that what you have to offer isn't much, but God's math doesn't just add up, it MULTIPLIES! Enjoy the play: <https://drive.google.com/file/d/1OAG7bJVNgZOKDLpQ6z-TYBHFuQnE8tta/view?usp=sharing>

*...and night shall be no more*  
Featuring music from:  
Bach, Manz, Kirchner, Rutter,  
Wilberg and more  
Under the direction of Bill Busch, Artistic Director  
Accompanied by Chamber Orchestra  
& LAC Accompanist, Rick Ewert

**Friday, December 6th**  
at 7:30pm  
First United Methodist Church  
121 W Wisconsin Ave  
Waukesha, WI 53186

**Sunday, December 8th**  
at 3:00pm  
Mount Carmel Lutheran Church  
8424 W Center St.  
Milwaukee, WI 53222

Tickets are \$20 General Admission  
and Students FREE with student ID  
More information available at:  
[www.lutheranacappella.org](http://www.lutheranacappella.org)  
Tickets available in advance or at the door.

The Lutheran  
A Cappella Choir  
of Milwaukee

### LUTHERAN A CAPPELLA CHOIR DECEMBER 6 & 8

The Lutheran A Cappella Choir of Milwaukee presents "...and night shall be no more," featuring music from: Bach, Manz, Kirchner, Rutter, Wilberg and more. Tickets are \$20 and students are FREE with an ID. Tickets are available for purchase in advance at <https://givebutter.com/f3TRwx> or at the door.

### JUBILATE CHORALE CONCERT | DEC. 7-8

*Joy & Wonder*  
Christmas with Jubilate and Friends  
Vicki Taylor, Director

**JUBILATE CHORALE**

**Saturday, December 7, 2024**  
7:30 pm  
St. John's Lutheran Church  
20275 Davidson Road  
Brookfield

**Sunday, December 8, 2024**  
3:00 pm  
St. Matthew's Lutheran Church  
1615 North Wauwatosa Avenue  
Wauwatosa

Advance Purchase  
[www.jubilatechorale.org](http://www.jubilatechorale.org)  
Or, call (262) 290-5242



## KNITTERS AND CROCHETERS

The Knitters and Crocheters will not meet in the month of December. Why not make it one of your New Year's resolutions to join our group starting in 2025. We meet the third Monday of each month from 1:00-3:00 PM in the gathering place. All levels of experience are welcome.

We have yarn available for you to use. We currently are working on prayer shawls, IV sleeves, dishcloths for Hope

Center, caps for newborns, and winter hats, scarves and mittens for the less fortunate. If you are currently working on a personal project, bring that and enjoy the camaraderie. If you have any questions, please contact Kathy Taylor at 262-392-2171.

thank you



## PEWAUKEE FOOD PANTRY THANK YOU!

Thank you, members of Galilee for your generous support of the Pewaukee Food Pantry this past year. Special thanks to all who made the monthly Food Pantry Sunday a great success. And the volunteers that worked at the pantry serving clients, did the bread runs to pick up donations from local stores, and helped out where needed. Any questions? Check with coordinators Pamela Graham or Sharon Vitek

## THANK YOU!

Outreach for Hope would like to express its appreciation to:

*Galilee Lutheran Church (Pewaukee)*

*Thank you for your participation in the 2024 Outreach for Hope Family Ride Run Walk!  
Your support is truly appreciated.*

20

Number of registrants

\$4,334.13

Total \$ Raised



2024 FAMILY RIDE RUN WALK  
Raising Hope Together

Top 5 ranked by number of registrants and total \$ raised; top 10 ranked by # of donations

## OUTREACH FOR HOPE THANK YOU!

Galilee Community, we received this certificate in the mail for your generous donations for the 2024 OFH Ride Run Walk! We also received word that donations were received OVER the \$150,000 goal, and this could not have been done without you!



FRIENDS IN CHRIST:

I WANT TO EXPRESS MY DEEP GRATITUDE FOR THE RECENT GIFT WE RECEIVED FOR THE EQUIPPING THE SAINTS MISSION APPEAL. THESE FUNDS WILL HELP US CONTINUE TO MAKE A REAL DIFFERENCE AS WE WORK TOGETHER TO DEVELOP AND STRENGTHEN LEADERS TO BECOME THE CHURCH GOD NEEDS US TO BE. BLESSINGS ON YOUR MINISTRY AS YOU PROCLAIM GOD'S LOVE TO YOUR NEIGHBORS NEAR AND FAR.

BISHOP PAUL ERICKSON

THANK YOU NOTE FROM  
BISHOP PAUL ERICKSON



Dear Friends at Galilee Lutheran Church,

Thank you for your generosity displayed through your gift of \$16,100 to the *Equipping the Saints* mission appeal.

You have joined a growing list of individuals and congregations who have collectively shared their gifts to bring new life to the ministries of our synod as we develop and support leaders and seek to foster new ways to spread the Gospel of hope through innovation and collaboration.

We began this mission appeal early in 2020 and had to pause in our efforts as so much of life came to a standstill. As we have emerged from the pandemic, we have been learning to be church in new ways. Now in 2024, the campaign initiatives of innovation and collaboration are taking on greater meaning and importance as we learn to listen and engage with our communities and seek new ways of doing ministry. Thanks to your generosity and all who are participating in the Equipping the Saints synod mission appeal, any congregation who desires mission renewal and innovation coaching can receive 12 months of coaching and training. Mission Renewal and Innovation Coaching webpages are now live for your congregation to read more and apply.

The leadership initiative of the campaign has been able to provide \$157,300 in grants to rostered ministers within this past year. A general category open to all rostered ministers has provided grants for continuing education, student loan payments, or supplemental retirement contributions. A separate category has given grants to BIPOC and LGBTQIA+ candidates or rostered ministers to provide support through candidacy and/or provide support as they wait longer for call or serve ministries that are below salary guidelines.

Thank you for joining rostered and lay Synod leaders and our Honor Roll congregations who collectively have raised over \$1,274,00 in total gifts received/pledged to date, as of 3/25/24.

Equipping the Saints has helped us grow in our ministries as a synod. I am grateful for your generous response. Thank you.





## DECEMBER BIRTHDAYS



2

McKinley Evans

4

Benjamin Barth

5

James Hagen

7

Randy L Larson

8

Nancy M Rice

Jacob Friend

9

Bill Rudolph

Suzanne Bowman

Darryl C. Gust

10

Isabella Estrada

Brett Corcoran

11

William Katt

12

Mary Jo Magnusson

14

Dale Peterson

15

Jack Kiser

Kayla Spata

16

Cassandra Marzofka

Linda Reese

Jill Opie

Tha Blay Wah

17

Maria Opie

Lynne Diefenbach

Emma Doenier

19

Kailey Wille

23

Kyle Dethloff

Melissa Peterson

24

Michelle Artis

Taylor Johnson

Donald Fredrick

26

Carole Brinkman

27

Penny Van Weele

29

Dylan Immel

30

John James Plesh Jr.

Stephanie Bruce

Kurt Knutson

Richard Winkelman



## PRAYER NEEDS

**Please keep in your prayers** - Patricia Alters, Eli Austin, Cathy Bartlett, Naomi Bayland, Steve Bower, Donna Chudada, Judy Corcoran, Bev Coshun, Isaiah Cramer, Oretha Dueno, Kari Elizabeth, Donna Frederick, Timothy Graham, Paul Hintze Jr., Jill Johnson, Marjory Kloth, Bill Koehn, Margo Krumnow, Alice Lamp, Liz, Heidi Mag, Ray Makeever, Ray Mansker, Dan Maske, Eliana Metzger, Lynn Meyer, Michael Mielke, Helen Mueller, Calla Nelson, Dennis Olson, Diane Praeger, Janet Praeger, Carol Puestow, Chris Roughen, John Ruf, Mark Sedarski, Olivia Taylor, Penny Williams, and Nancy Wojcicki.

Are you or someone you know in  
need of prayer?  
Simply contact the church office at  
(262) 691-2380  
or  
email [galilee@galileelc.org](mailto:galilee@galileelc.org)  
with your prayer requests.



Pray for our  
military.

Mike Anderson  
Andrew Connolly  
Jeremy Fossier  
Tim Gilestad  
Bill Groth  
Morgan Mosher  
Andrew Richardson

## MINISTRY STAFF

**Pastor:** Pastor Amanda Applehans, email: [pastoramanda@galileelc.org](mailto:pastoramanda@galileelc.org)

**Director of Music & Worship Accompanist:** Patricia DeBlaey, email: [patricia@galileelc.org](mailto:patricia@galileelc.org)

**Choir Accompanist:** Jean Nelson, email: [jeancyf@galileelc.org](mailto:jeancyf@galileelc.org)

**Financial Administrative Assistant:** Karen Streit, email: [finance@galileelc.org](mailto:finance@galileelc.org)

**Office Coordinator:** Samantha Scantlin, email: [galilee@galileelc.org](mailto:galilee@galileelc.org)

Church office is open Monday—Thursday 8:30-4:30pm

---

## MINISTRY COORDINATORS

### WELCOMING

**Hospitality** - Susan Keller & Vivian Dethloff | [susieqz2@aol.com](mailto:susieqz2@aol.com) & [dethloff5@gmail.com](mailto:dethloff5@gmail.com)

**Connecting** - Mary Winter | [marywinter1322@gmail.com](mailto:marywinter1322@gmail.com)

### EQUIPPING

**Worship & Arts** - Diana Conway | [dlmc@milwpc.com](mailto:dlmc@milwpc.com)

**Faith Formation** - Pastor Amanda Applehans | [pastoramanda@galileelc.org](mailto:pastoramanda@galileelc.org)

**Administration** - Building & Grounds | Nicholas Riegert | [riegs4@sbcglobal.net](mailto:riegs4@sbcglobal.net)

**Administration** - Church Office & HR | Kathy Taylor | [htmachine@centurytel.net](mailto:htmachine@centurytel.net)

**Godly Play** - Sue Olson | [olsonmsusan@gmail.com](mailto:olsonmsusan@gmail.com)

### SENDING

**Partnerships & Global-Gifting** - Deb Kohler | [deb.kohler.mke@gmail.com](mailto:deb.kohler.mke@gmail.com)

**Compassion Care** - Ann Dee Austin | [anndeeaustin@gmail.com](mailto:anndeeaustin@gmail.com)

**Columbarium** - Bill Braunschweig | [bbraunschweig1@gmail.com](mailto:bbraunschweig1@gmail.com)

---

## LEADERSHIP BOARD MEMBERS, 2024

**Carl Spencer** - President | [carlspencerv66@gmail.com](mailto:carlspencerv66@gmail.com)

**Steve Dethloff** - Vice President | [dethloff5@gmail.com](mailto:dethloff5@gmail.com)

**Darrin Kehl** - Secretary | [dlkehl@quad.com](mailto:dlkehl@quad.com)

**Terri Drover** - Member at large | [terdrover@sbcglobal.net](mailto:terdrover@sbcglobal.net)

**Mary Dehler** - Member at large | [biddymarka@gmail.com](mailto:biddymarka@gmail.com)

**Andrea Smith** - Treasurer | [andreasmith3@wi.rr.com](mailto:andreasmith3@wi.rr.com)

# December

SUN	MON	TUE	WED	THU	FRI	SAT
-----	-----	-----	-----	-----	-----	-----

1 9a Worship Service 10:15a Education Hour	2 7:30p AA - Fellowship Hall	3 6p Women's Advent Gather	4 9:30a Text Study 1:45p Grace Group 4:30p Choir rehearsal prep 6p Vocal Choir Rehearsal 7p Bell Choir Rehearsal	5 8p AA - Room 41 8p Boy Scouts Troop 87 - Fe	6 Office Closed 12p 12 Step Group - Room	7 7:30a Men's Bible Study - F 5p Worship Service
8 Sunday School Christmas Pr 9a Worship Service 10:15a Education Hour	9 7:30p AA - Fellowship Hall	10 6p Leadership Board Meetir	11 9:30a Text Study 4:30p Choir rehearsal prep 6p Vocal Choir Rehearsal 7p Bell Choir Rehearsal	12 11:30a Go-Getters 8p AA - Room 41 8p Boy Scouts Troop 87 - Fe	13 Office Closed 12p 12 Step Group - Room	14 Vocal & Bell Choirs 8a Women's Bible Study - G 5p Worship Service
15 Sunday School Christmas Pr 9a Worship Service 10:15a Education Hour	16 10a Encore: Breast Cancer S 1p Knitters & Crocheters - C 7:30p AA - Fellowship Hall	17 3p Loss & Living Gathering	18 9:30a Text Study 4:30p Choir rehearsal prep 6p Vocal Choir Rehearsal 7p Bell Choir Rehearsal	19 8p AA - Room 41 8p Boy Scouts Troop 87 - Fe	20 Office Closed 12p 12 Step Group - Room	21 7:30a Men's Bible Study - F 5p Worship Service
22 Vocal & Bell Choirs 9a Worship Service 10:15a Education Hour	23 7:30p AA - Fellowship Hall	24 1p Family-Friendly Service 4p Traditional Worship Serv	25 OFFICE CLOSED 4:30p Choir rehearsal prep 6p Vocal Choir Rehearsal 7p Bell Choir Rehearsal	26 8p AA - Room 41 8p Boy Scouts Troop 87 - Fe	27 Office Closed 12p 12 Step Group - Room	28 8a Women's Bible Study - G 5p Worship Service
29 9a Worship Service 10:15a Education Hour	30 7:30p AA - Fellowship Hall	31 7:30p AA - Fellowship Hall	1 OFFICE CLOSED 4:30p Choir rehearsal prep 6p Vocal Choir Rehearsal 7p Bell Choir Rehearsal	2 8p AA - Room 41 8p Boy Scouts Troop 87 - Fe	3 Office Closed 12p 12 Step Group - Room	4 7:30a Men's Bible Study - F 5p Worship Service
5 10:15a Education Hour	6 7:30p AA - Fellowship Hall	7 7:30p AA - Fellowship Hall	8 9:30a Text Study 1:45p Grace Group 4:30p Choir rehearsal prep 6p Vocal Choir Rehearsal 7p Bell Choir Rehearsal	9 11:30a Go-Getters 8p AA - Room 41 8p Boy Scouts Troop 87 - Fe	10 Office Closed 12p 12 Step Group - Room	11 8a Women's Bible Study - G 5p Worship Service



**JOIN US FOR WORSHIP**  
**SATURDAYS AT 5:00 PM**  
**SUNDAYS AT 9:00 AM**

**ACCESS THE CHURCH CALENDAR ANY TIME**

Galilee's monthly calendar is available on the website. Go to <https://galileelc.org>, scroll down, and click on the "Church Calendar" button.



**Evangelical Lutheran Church in America**  
God's work. Our hands.