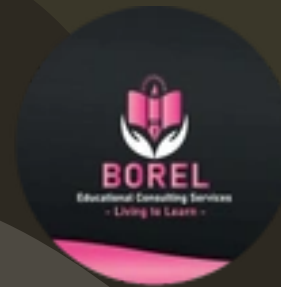




BOREL

EDUCATIONAL CONSULTING SERVICES





[Introduction to BECS](#)

[Meet Dr. Cynthia Borel](#)

[Why you need this](#)

[Our Mission and Values](#)

[How We Can Help You](#)

[Reasons for Learning](#)

[Educational and career Services](#)

[Benefits](#)





Introduction to **BECS**

Borel Educational Consulting Services (BECS)

offers personalized guidance for career and educational planning. Whether you're a student, professional, or retiree, BECS helps you make informed decisions to reach your potential. Our services cater to individuals and organizations alike, focusing on your unique needs and goals to ensure success.

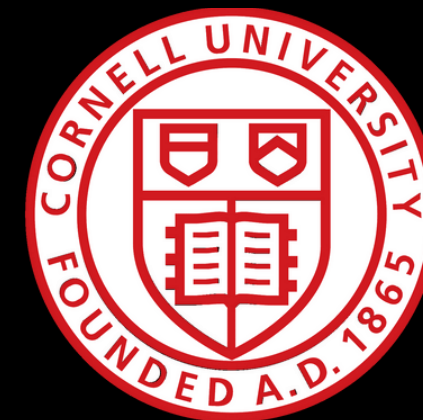


WHO AM I?



I am the founder of Borel Educational Consulting Services, an author, and a dedicated educator with a Doctorate in Education from Auburn University. My expertise in adult education, instructional design, and management is backed by multiple degrees and certifications, including a Data Analysis Certificate from Cornell. As a certified MBTI®, DiSC, and Five Behaviors practitioner, I excel in personal development. With 42 years of combined military and civil service, I bring a wealth of experience to guide individuals and organizations toward achieving their educational and career goals.

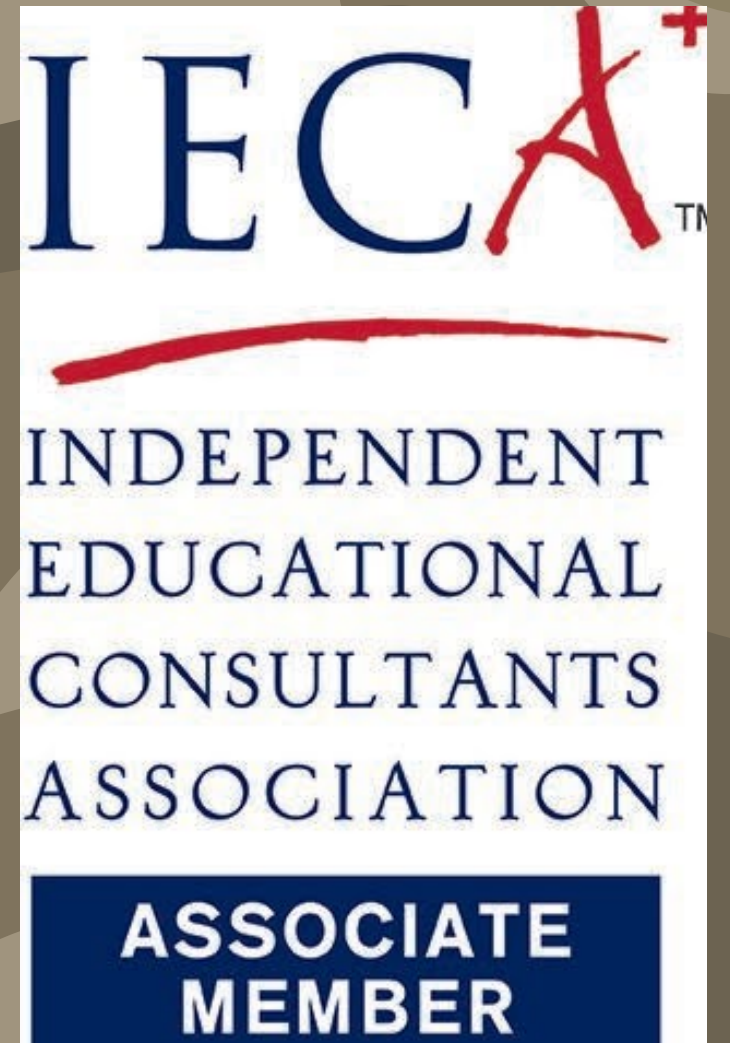
Dr. Cynthia Borel, Ed.D.





Click for Profile

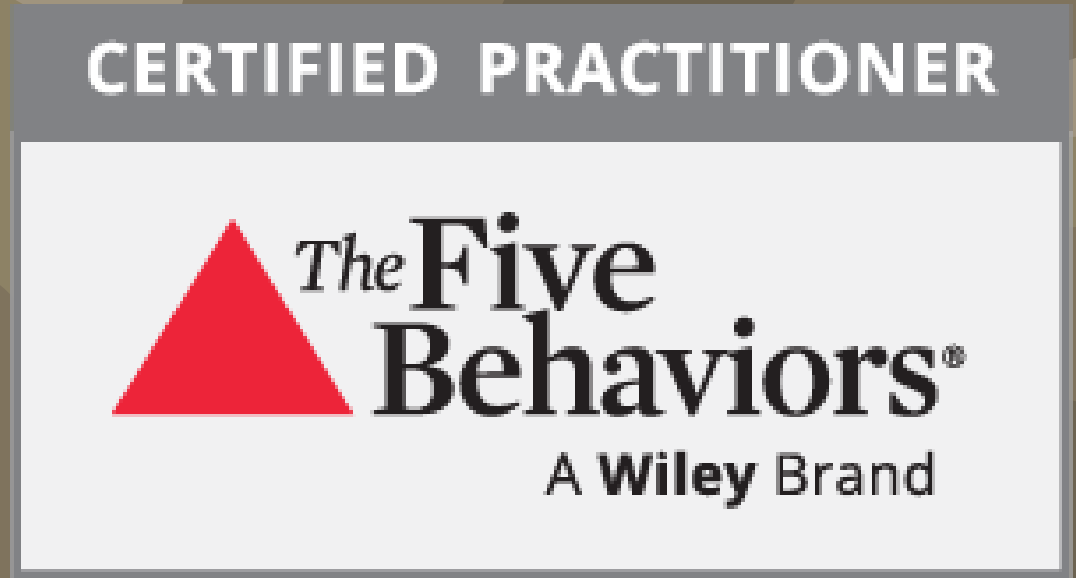
CERTIFIED PRACTITIONER
EVERYTHING



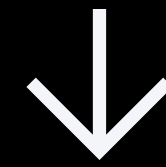
GREATER COLUMBUS GA
Chamber of Commerce



KAPPAN

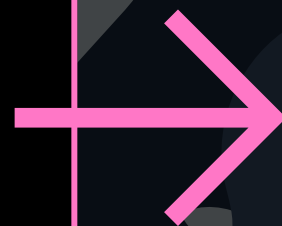


OVERVIEW

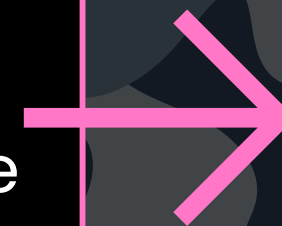


WHY YOU NEED THIS?

The world is constantly changing, and so are the education sector's needs, demanding innovative approaches and adaptable skills to keep pace with these dynamic shifts.



In today's world, students need more than academics to thrive in their careers; they need expert guidance to tackle modern workplace challenges.



Borel Educational Consulting Services (BECS) provides people with the tools and resources they need to achieve their goals and succeed in their chosen fields.

To help people and groups reach their best by giving them great, easy-to-use learning tools and support.



Our Goal is to guide clients towards their educational goals with personalized solutions, fostering academic success, professional skill enhancement, and personal development through our diverse services and programs.ch

Driven by innovation and excellence, our vision is to be the top educational consulting provider in the Tri-state area (Alabama, Georgia, Florida), dedicated to enhancing educational outcomes for individuals and organizations with unwavering customer satisfaction.

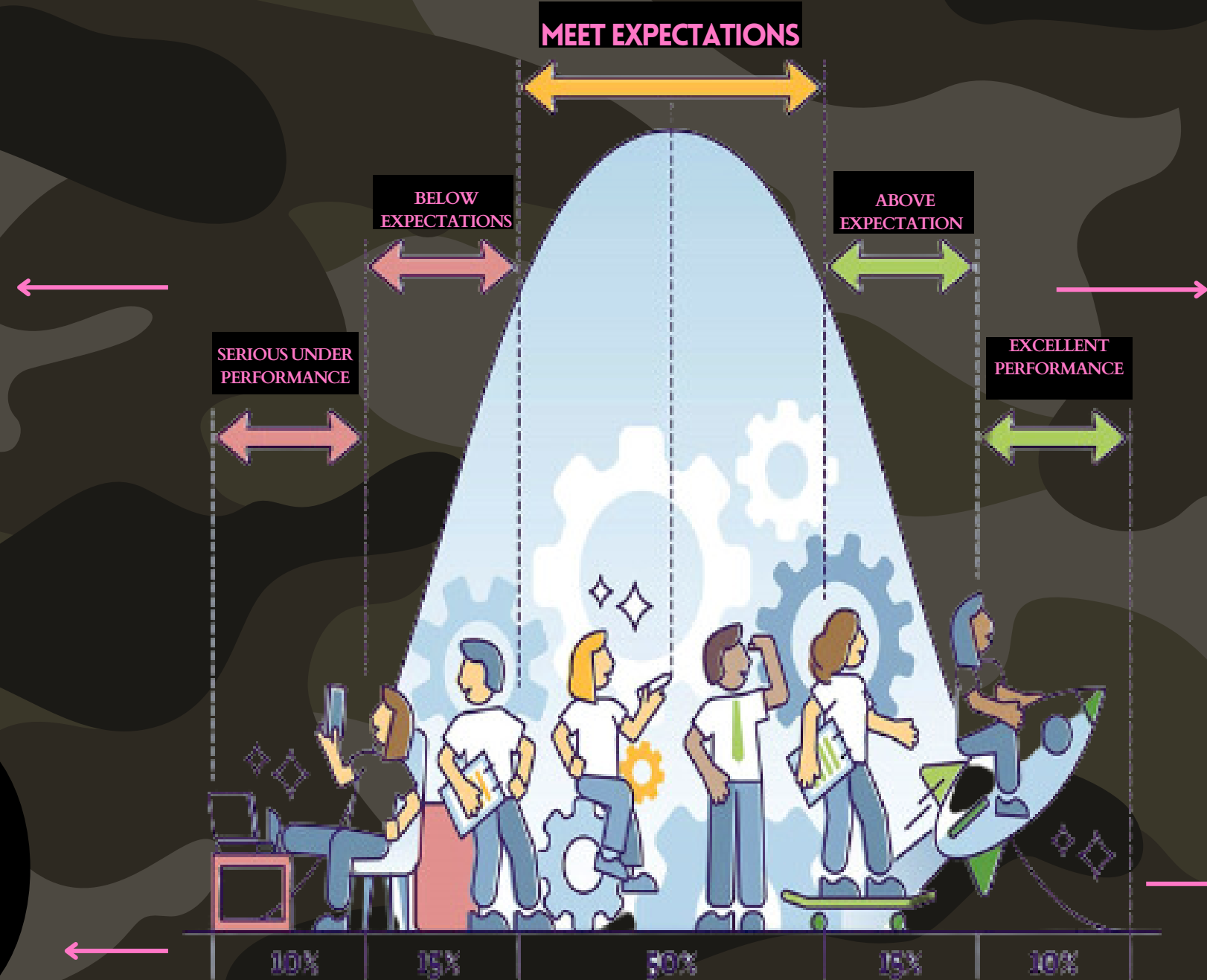


THE PROBLEM

BELL CURVE

Despite the benefits of educational consulting services, many students still need help finding the right guidance and support they need to succeed. There are several reasons for this.

Many students are not aware of the existence of these services.



Even if they are aware, they may not have access to them due to financial constraints.

There needs to be more standardization and regulation in the industry, which makes it difficult for students to determine the quality of the services being offered.

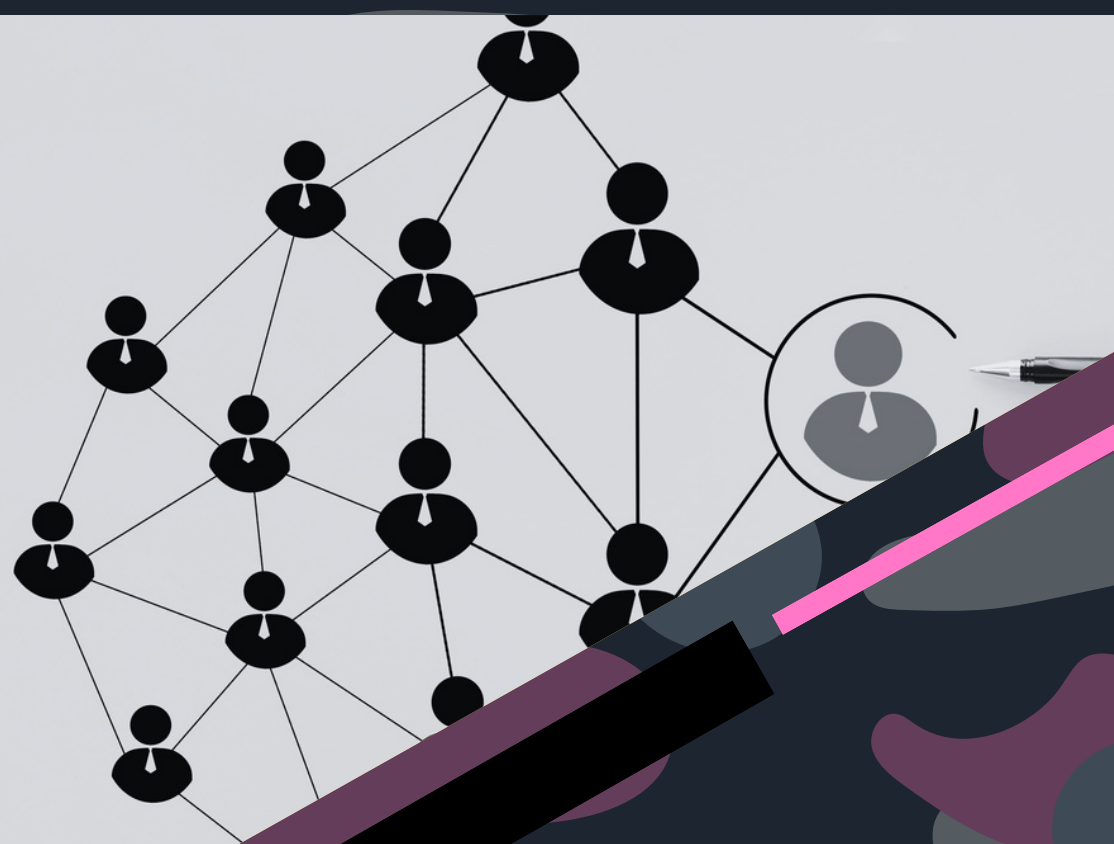
THE SOLUTION

- To address these problems, we propose the development of an educational consulting service that is accessible, affordable, and of high quality.
- Our service is designed to meet the needs of students from diverse backgrounds and with varying levels of academic achievement.
- We will leverage technology to make our services available to students worldwide while also providing personalized support through one-on-one consultations and group sessions.
- We will also work closely with universities and other educational institutions to ensure our services align with their curricula and standards.






**HOW WE
CAN HELP
YOU?** PROGRAMS



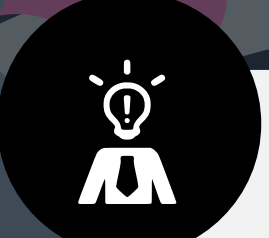
Administrative Skills

 Administrative Support

 Administrative Office Procedures

 Accountability in the Workplace


 Organizational Skills

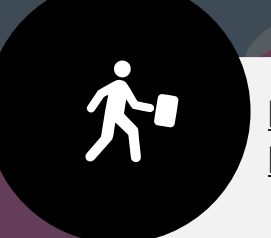
 Executive and Personal Assistants

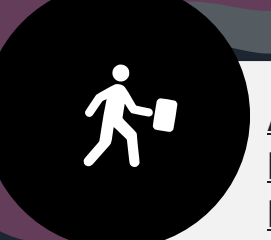
 Collaborative Business Writing

 Business Writing

 Social Media in the Workplace

 Supply Chain Management

 Basic Bookkeeping

 Archiving and Record Management

 Meeting Management



SUPERVISORS AND MANAGERS



Leadership and Influence



Budgets and Financial Reports



Office Politics for Managers



Coaching and Mentoring



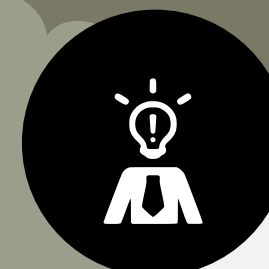
Middle Manager



Conducting Annual Employee Reviews



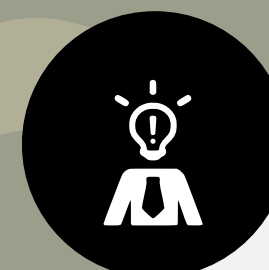
Self-Leadership



Managing Personal Finances



Performance Management



Manager Management



Career Development



Building
Confidence and
Assertiveness



Creative
Problem
Solving



Communication
Strategies



Creativity:
Thinking Outside
the Box



Interpersonal
Skills



Developing
Creativity




Entrepreneurs
hip



Digital
Citizenship




LEADERSHIP & EMPOWERMENT (PERSON-PERSON)



Leadership in a Global Context




Introduction to Leadership



Leading Change and Adaptability



Effective Communication




Ethical Leadership




Motivating and Inspiring Others



Empowering Others



Building and Leading High-Performing Teams



Personal Leadership Development



LEADERSHIP DEVELOPMENT FOR **WOMEN**



[The Cloud and Business](#)



[Leadership Development](#)



[Ten Soft Skills You Need](#)



[mLearning Essentials](#)



[Telework and Telecommuting](#)



[Negotiation Skills](#)



[Project Management 7th Edition](#)



[Personal Branding](#)



[Project Management 6th Edition](#)



[Time Management](#)

HUMAN RESOURCES

HUMAN RESOURCES



Business Succession Planning.



Employee Onboarding.



Contract Management



Millennial Onboarding.



Unconscious Bias



Talent Management



Employee Recruitment



Universal Safety Practices



Crisis Management



Generation Gaps



Sensitivity Training.



Universal Safety Practices



Measuring Results from Training.



Developing a Lunch and Learn



Employee Termination Processes



Train-the-Trainer



Diversity, Equity, and Inclusion



Managing Workplace Harassment



MANAGEMENT



Knowledge Management



Human Resource Management



Facilitation Skills



Leadership and Influence



Manager Management



Employee Motivation



Trust Building and Resilience



Performance Management



Virtual Team Building



Developing New Managers



Self-Leadership



Conducting Annual Employee Reviews




Office Politics for Managers




Middle Manager




PERSONAL DEVELOPMENT


 Work-Life Balance

 Stress Management


 Improving Self-Awareness


 Social Learning

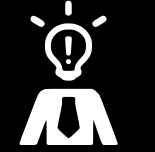
 Increasing Your Happiness


 Social Intelligence


 Life Coaching Essentials

 Public Speaking

 Managing Personal Finances

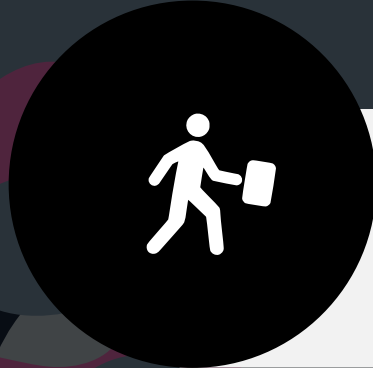
 Taking Initiative

 Personal Productivity

 Managing Workplace Anxiety



Microsoft



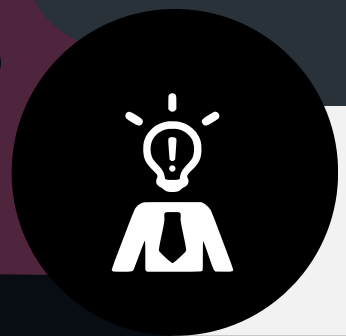
Access 2016
Essentials



Excel 2016
Essentials



Outlook 2016
Essentials

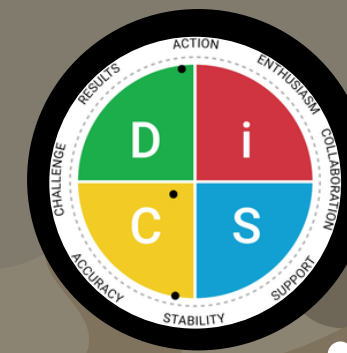


PowerPoint 2016
Essentials



Word 2016
Essentials

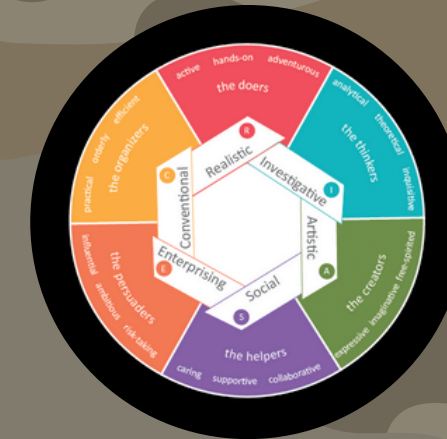
Everything DiSC Assessment is a personality test that helps individuals and organizations understand their communication preferences, how they respond to conflict, what motivates them, what causes them stress, how they approach problem-solving, how they make decisions, and how to identify DiSC styles.



Myers-Briggs Type Indicator (MBTI®) Assessment is a self-report personality test that measures four personality dichotomies. The MBTI is a popular tool for personal development and career counseling. It can help people understand their personality preferences and how those preferences affect their interactions. The MBTI can also be used to help people make better decisions, set goals, and build relationships.



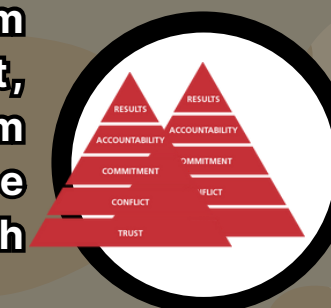
Strong Interest Inventory (SII) Assessment is a career assessment tool that helps individuals identify their work personality by exploring their interests in six broad areas: realistic, artistic, investigative, social, enterprising, and conventional (often referred to using the acronym RIASEC). The SII is one of the world's most widely used career assessments, and it has been shown to be reliable and valid.



Prior Learning Assessment (PLA) is the process of evaluating and assessing an individual's life learning for college credit, certification, or advanced standing toward further education or training. It is a pathway for assessing learning gained outside a traditional academic environment.



The Five Behaviors (Coming Soon) is a powerful tool that can help you build a team that is high-performing, innovative, and customer-focused using Trust, Conflict, Commitment, Accountability, and Results. The Five Behaviors of a Cohesive Team are a powerful tool for improving team performance. By focusing on these behaviors, teams can build trust, resolve conflict, achieve commitment, hold each other accountable, and achieve results.



ASSESSMENT SERVICES

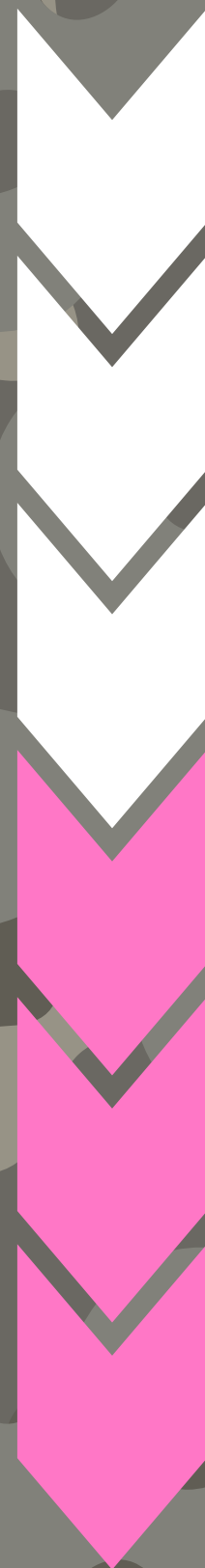
REASONS FOR LEARNING

The average enlistment time is approximately 15 years

- Career Advancement
- Professional pursuits
- Higher quality of life
- Change occupation



Step 1



Step 2



- Earned college credits from military training
- Military transcript
- College Level Examination Program
- Defense Activity for Non-Traditional Education Support (DANTES)

Step 3

Improve proficiency and learn new skills.

- To attend officer candidate training
- Increased salary
- Increased job responsibilities
- Improved future opportunities



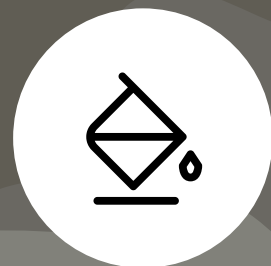
Step 4



Improves transitioning from the military to the civilian sector

Step 5

Tuition Assistance; 100% of college tuition is paid in most cases



Step 6



Saves time and money

EDUCATIONAL AND CAREER SERVICES



**One-on-One
personalized counseling**



Advisement/Consulting



Educational planning



Academic coaching



**Curriculum design
services**



**Higher Education
Application Assistance**



**Assistance Free Application for
Federal Student Aid (FAFSA)**



Placement Assistance



**Prior Learning
Assistance**




**Professional
Development**



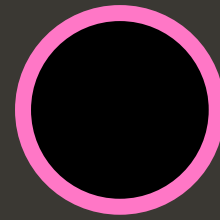
**Scholarship and
Financial Aid Counseling**



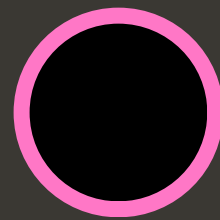
**Workshops for Adult Education,
Healthcare Administration,
Leadership, and Management**



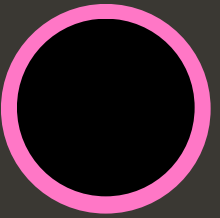
BENEFITS



Identify Strengths and Weaknesses: Guide them in self-assessment to recognize their strong points and areas needing improvement, and help them set realistic goals with a clear plan to achieve them



Provide Resources and Skill Building: Offer access to study materials, career guidance, and networking opportunities to enhance their knowledge and skills for success in their chosen field.



In addition, our service will benefit universities and other educational institutions by providing them with a pool of well-prepared and motivated students who are ready to excel in their studies and contribute to the growth of their respective industries.



EDUCATIONAL BENEFITS

- **Service-Cancelable Loan (SCL)**
 - Georgia resident for at least 12 months
 - Everyone eligible: officer and enlisted
 - Must be in good standing with Georgia National Guard for two (2) years and maintain 2.0 GPA
 - Must submit a Free Application for Federal Student Aid (FAFSA)
 - Pays up to 100% for up to 120 semester hours at any Georgia public college or university
 - Private schools have funding limits
- **Montgomery GI Bill-Selected Reserve (Chapter 1606)**
- **Federal Tuition Assistance (FTA)**
- **Post 9/11 GI Bill (Chapter 33)**
- **GA HERO Scholarship (must use before separating from service)**
- **GA Hope Scholarship (3.0 GPA required)**
- **Hope Grant (2.0 GPA required; 63 semester/95 quarter hour limit)**
- **Hope Career Grant (career fields important to economic growth)**
- **Zell Miller Scholarship (3.7 GPA and maintain a minimal 3.3 GPA)**
- **Zell Miller Grant (3.5 GPA required; same limits as Hope Grant)**



11 - Agriculture, Forestry, Fishing, and Hunting.

21 - Mining, Quarrying, and Oil and Gas Extraction

22 - Utilities

23 - Construction

31-33 - Manufacturing.

42 - Wholesale Trade

44-45 - Retail Trade

48-49 -

Transportation and Warehousing.

51 - Information

53 - Real Estate and Rental and Leasing.

54 - Professional and Technical Services

55 - Management of Companies and Enterprises

56 - Administrative and Waste Services

52 - Finance and Insurance

61 - Educational Services

62 - Health Care and Social Assistance

71 - Arts, Entertainment, and Recreation

72 - Accommodation and Food Services

81 - Other Services, Except Public Administration

92 - Public Administration



OTHER RESOURCES AVAILABLE

Military Resources

- **ACE Military Guide**
- **ACE National Guide**
- **ArmyIgnitED**
- **Defense Activity for Non-Traditional Education Support (DANTES)**
- **Department of Defense Voluntary Education**
- **Joint Services Transcript**
- **Learner Transfer Guide**
- **Student Guide to Credit for Prior Learning**
- **Air University**
- **Coast Guard Institute**
- **Community College of the Air Force**
- **Navy College Program**
- **USMC Training and Education Command**

Developing a Portfolio

- **Portfolio Cover Page**
- **Table of Content**
- **Chronological Autobiography**
- **Resume**
- **Course Competency Matrix**
- **Learning Narrative**
- **Sample Recommendation and Documentation supporting request for PLA**
- **Portfolio**

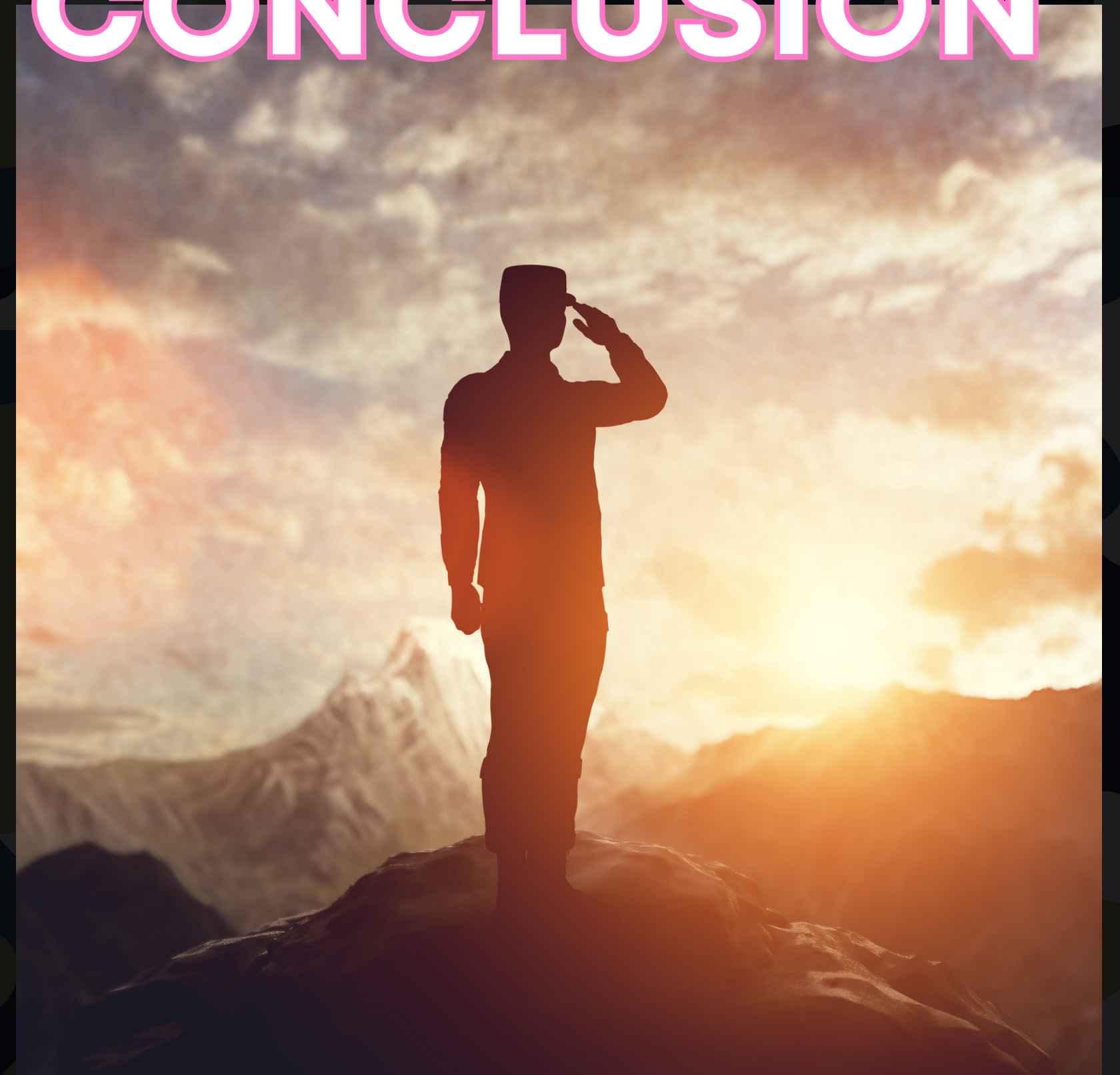
CONCLUSION

The need for high-quality educational consulting services has never been greater.

Our service aims to provide adults with the guidance and support they need to succeed in their chosen fields.

By leveraging technology, personalization, and collaboration with educational institutions, we believe that our service has the potential to make a significant impact on the lives of students worldwide.

We look forward to working with you to realize this vision.





BOREL

Educational Consulting Services
- Living to Learn -



DR. CYNTHIA BOREL (ED.D)

Owner, Borel Educational Consulting Services

 888-264-0240

 334-694-0346

 cdb@borelonline.com

 www.borelonline.com