



BOREL

EDUCATIONAL CONSULTING SERVICES

DR. CYNTHIA D. BOREL

INDEX

01

[Introduction to BECS](#)

02

[How We Can Help You](#)

03

[Meet Dr. Cynthia Borel](#)

04

[Reasons for Learning](#)

05

[Educational and career Services](#)

06

[Benefits](#)





Introduction to BECS

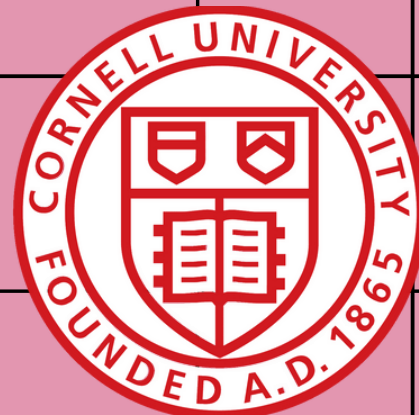
Borel Educational Consulting Services (BECS) offers personalized guidance for career and educational planning. Whether you're a student, professional, or retiree, BECS helps you make informed decisions to reach your potential. Our services cater to individuals and organizations alike, focusing on your unique needs and goals to ensure success.

WHO AM I?

I am the founder of Borel Educational Consulting Services, an author, and a dedicated educator with a Doctorate in Education from Auburn University. My expertise in adult education, instructional design, and management is backed by multiple degrees and certifications, including a Data Analysis Certificate from Cornell. As a certified MBTI®, DiSC, and Five Behaviors practitioner, I excel in personal development. With 42 years of combined military and civil service, I bring a wealth of experience to guide individuals and organizations toward achieving their educational and career goals.



DR. CYNTHIA BOREL, ED.D.





Click for Profile

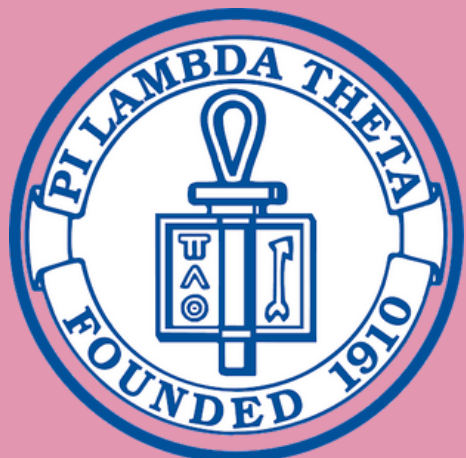
CERTIFIED PRACTITIONER
EVERYTHING



INDEPENDENT
EDUCATIONAL
CONSULTANTS
ASSOCIATION

ASSOCIATE
MEMBER

**GREATER
COLUMBUS** GA
Chamber of Commerce



KAPPAN

CERTIFIED PRACTITIONER

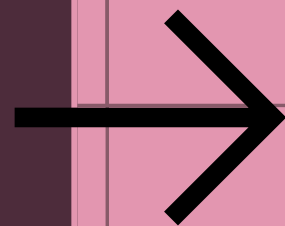


OVERVIEW

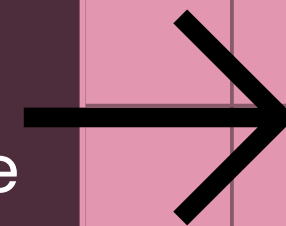


WHY YOU NEED THIS?

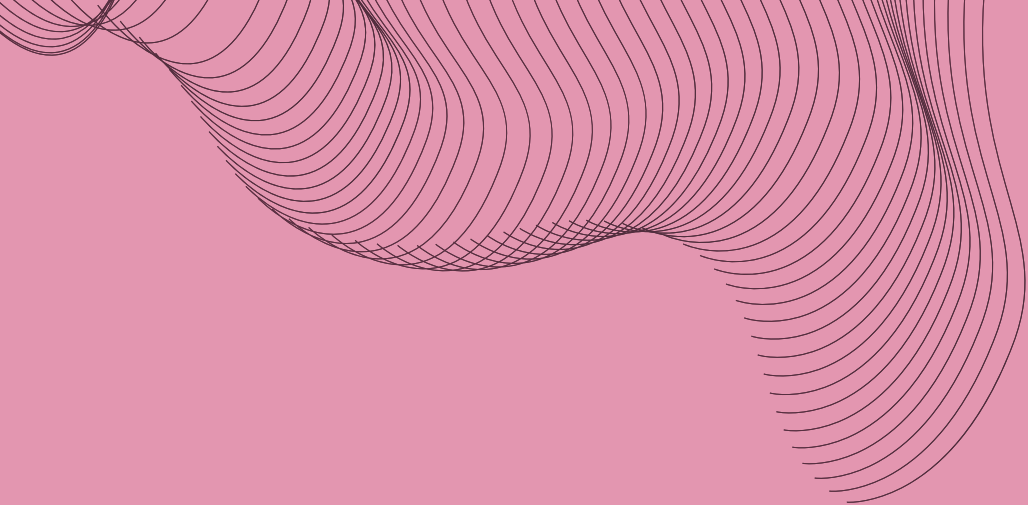
The world is constantly changing, and so are the education sector's needs, demanding innovative approaches and adaptable skills to keep pace with these dynamic shifts.



In today's world, students need more than academics to thrive in their careers; they need expert guidance to tackle modern workplace challenges.



Borel Educational Consulting Services (BECS) provides people with the tools and resources they need to achieve their goals and succeed in their chosen fields.



To help people and groups reach their best by giving them great, easy-to-use learning tools and support.

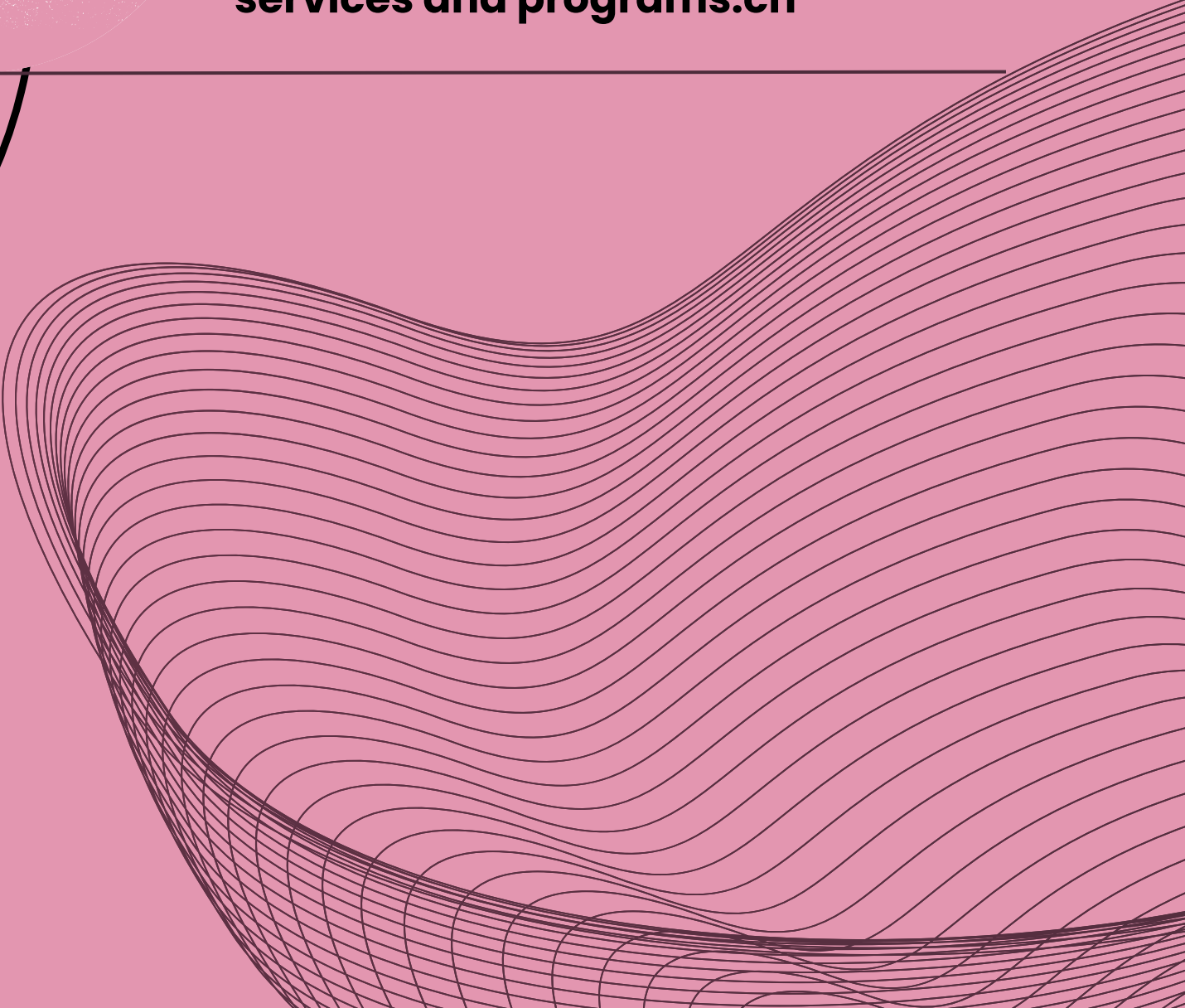
MISSION

Driven by innovation and excellence, our vision is to be the top educational consulting provider in the Tri-state area (Alabama, Georgia, Florida), dedicated to enhancing educational outcomes for individuals and organizations with unwavering customer satisfaction.

VISION

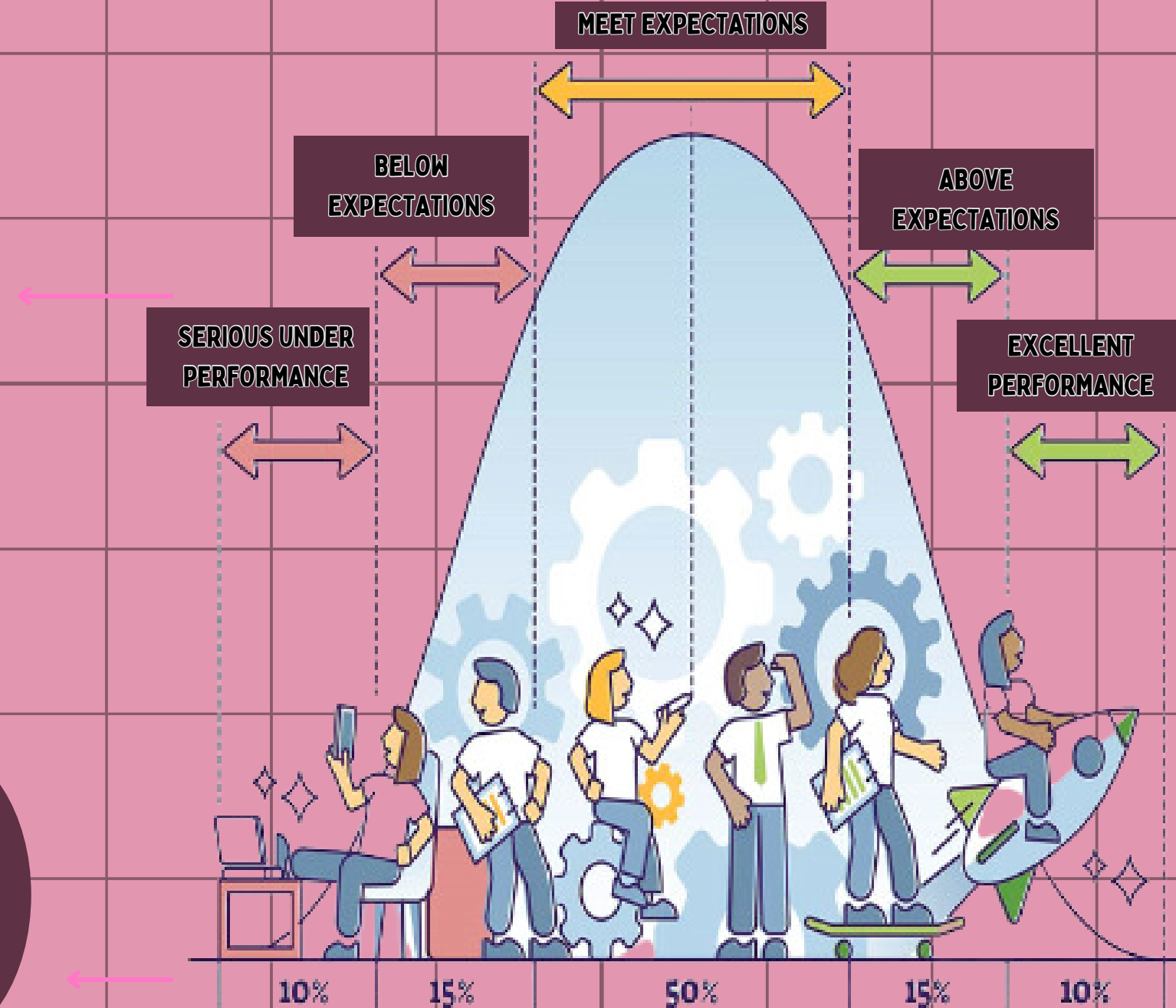
GOAL

Our Goal is to guide clients towards their educational goals with personalized solutions, fostering academic success, professional skill enhancement, and personal development through our diverse services and programs.ch



THE PROBLEM

BELL CURVE



Despite the benefits of educational consulting services, many students still need help finding the right guidance and support they need to succeed. There are several reasons for this.

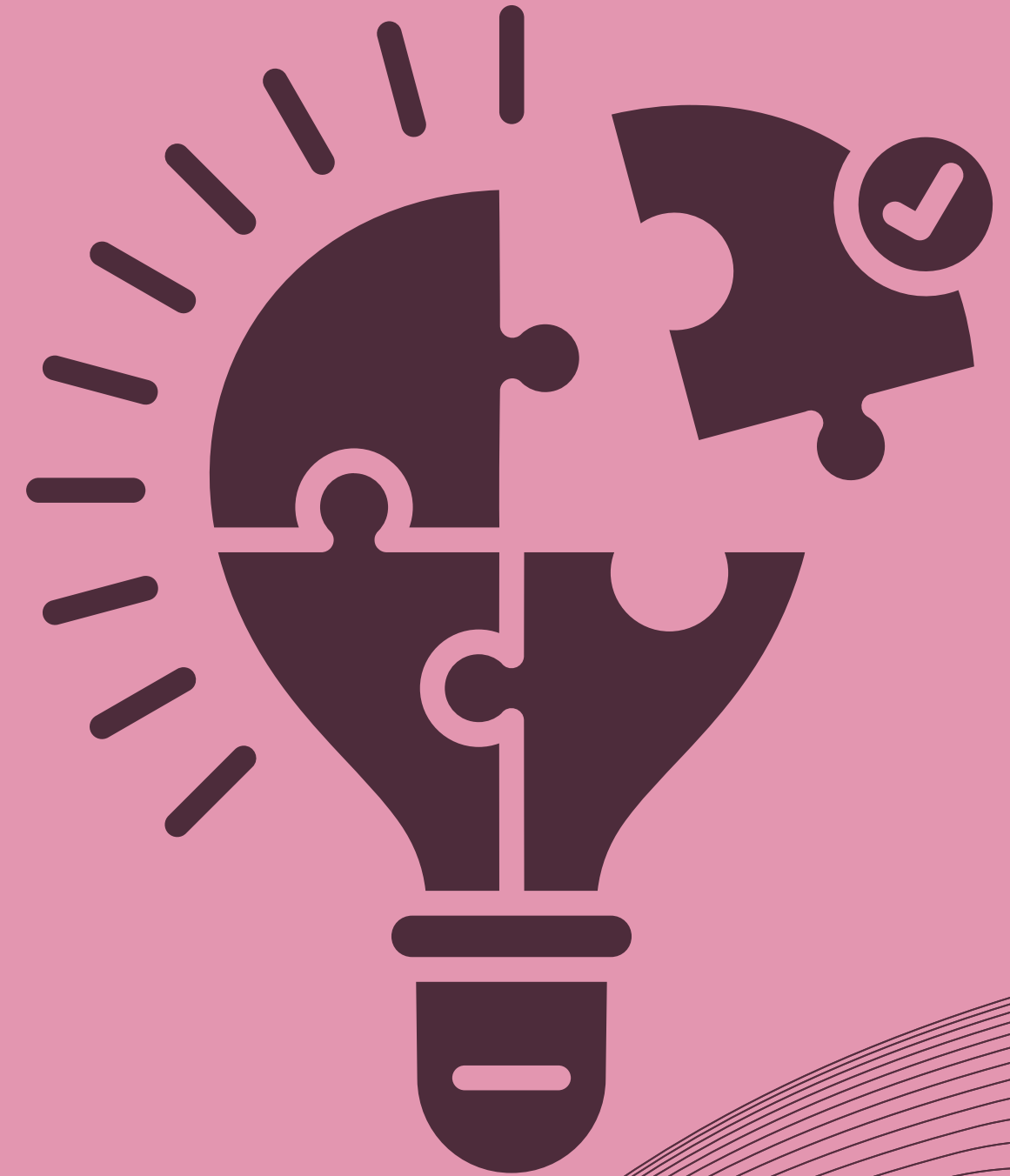
Many students are not aware of the existence of these services.

Even if they are aware, they may not have access to them due to financial constraints.

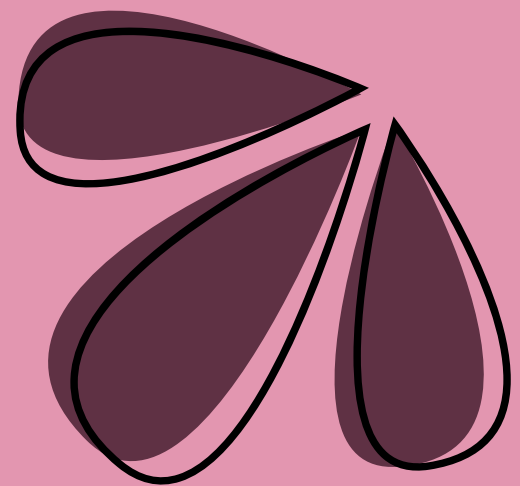
There needs to be more standardization and regulation in the industry, which makes it difficult for students to determine the quality of the services being offered.

THE SOLUTION

- To address these problems, we propose the development of an educational consulting service that is accessible, affordable, and of high quality.
- Our service is designed to meet the needs of students from diverse backgrounds and with varying levels of academic achievement.
- We will leverage technology to make our services available to students worldwide while also providing personalized support through one-on-one consultations and group sessions.
- We will also work closely with universities and other educational institutions to ensure our services align with their curricula and standards.



**HOW WE CAN
HELP YOU?**






Administrative Skills



Administrative Office Procedures



Administrative Support



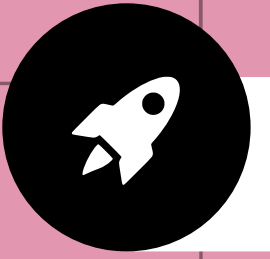
Business Writing



Collaborative Business Writing




Executive and Personal Assistants




Organizational Skills



Accountability in the Workplace



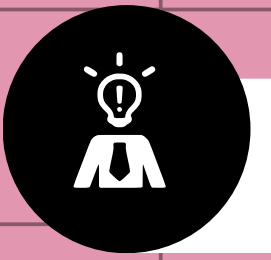
Meeting Management



Archiving and Record Management



Basic Bookkeeping



Supply Chain Management



Social Media in the Workplace



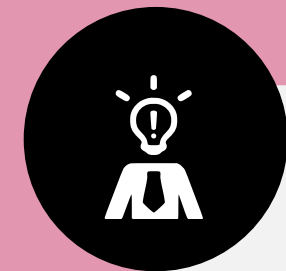
SUPERVISORS AND MANAGERS



Leadership and Influence



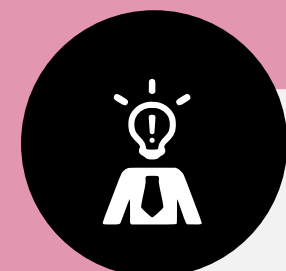
Office Politics for Managers



Middle Manager



Self-Leadership




Performance Management



Budgets and Financial Reports



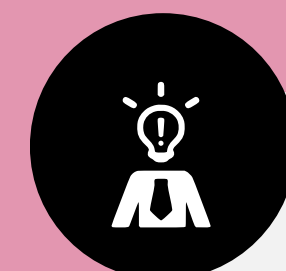
Coaching and Mentoring



Conducting Annual Employee Reviews



Managing Personal Finances



Manager Management



Career Development



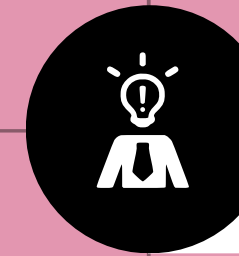
Building Confidence and Assertiveness



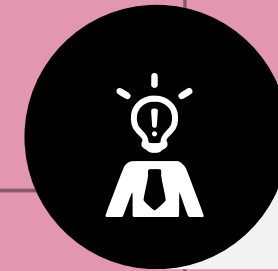
Creative Problem Solving



Communication Strategies



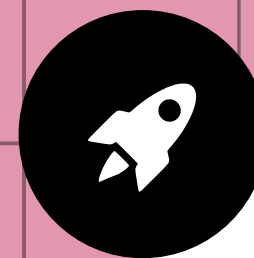
Creativity: Thinking Outside the Box



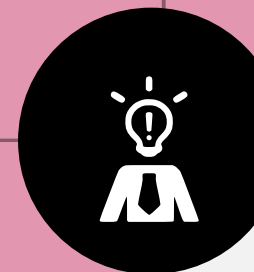
Interpersonal Skills



Developing Creativity




Entrepreneurship



Digital Citizenship



LEADERSHIP & EMPOWERMENT (PERSON-PERSON)



Leadership in a Global Context



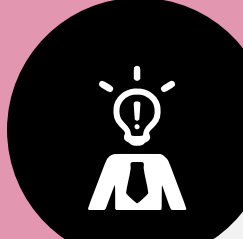
Introduction to Leadership




Leading Change and Adaptability



Effective Communication




Ethical Leadership



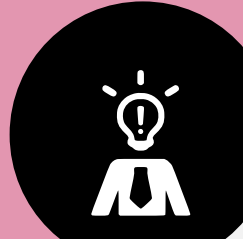
Motivating and Inspiring Others



Empowering Others



Building and Leading High-Performing Teams



Personal Leadership Development



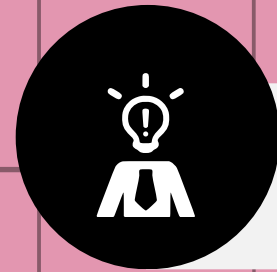
LEADERSHIP DEVELOPMENT FOR WOMEN



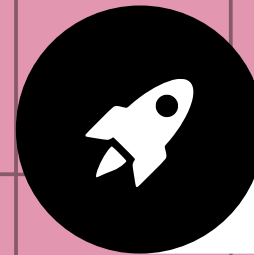
The Cloud and Business



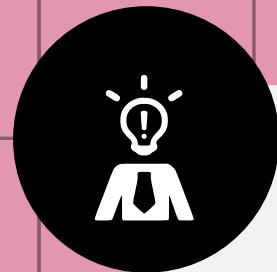
Ten Soft Skills You Need



Telework and Telecommuting



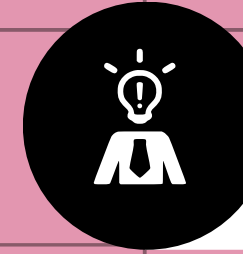
Project Management 7th Edition



Project Management 6th Edition



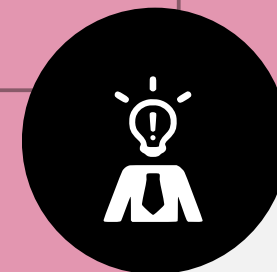
Leadership Development



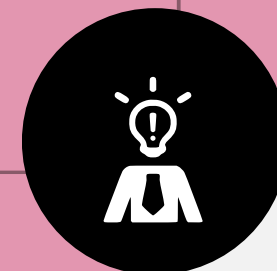
mLearning Essentials



Negotiation Skills



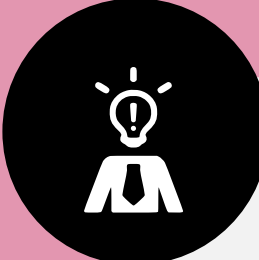
Personal Branding




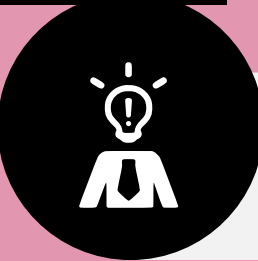
Time Management

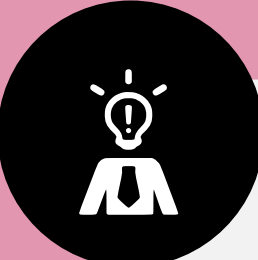


HUMAN RESOURCES


 Unconscious Bias


 Universal Safety Practices


 Measuring Results from Training

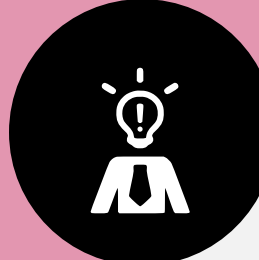
 Train-the-Trainer

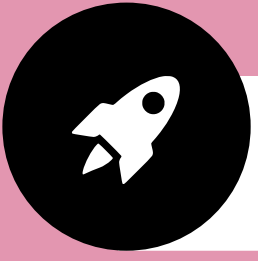
 Business Succession Planning

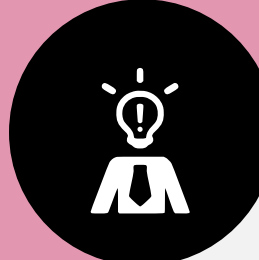
 Contract Management


 Talent Management

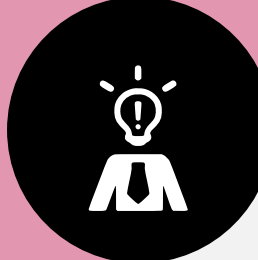
 Crisis Management

 Sensitivity Training


 Developing a Lunch and Learn

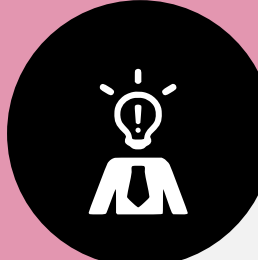
 Diversity, Equity, and Inclusion

 Employee Onboarding

 Millennial Onboarding

 Employee Recruitment

 Generation Gaps


 Universal Safety Practices

 Employee Termination Processes

 Managing Workplace Harassment




MANAGEMENT



Knowledge Management



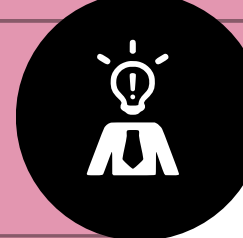
Human Resource Management



Facilitation Skills



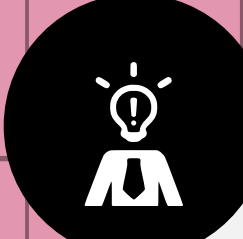
Leadership and Influence




Manager Management



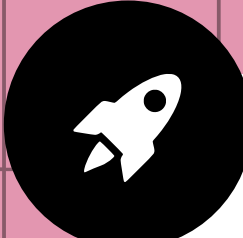
Employee Motivation



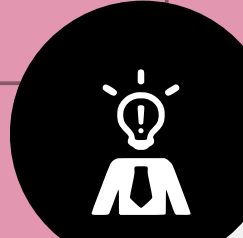
Trust Building and Resilience



Performance Management



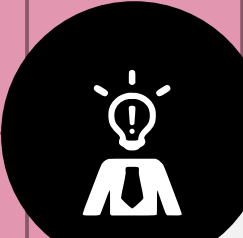
Virtual Team Building



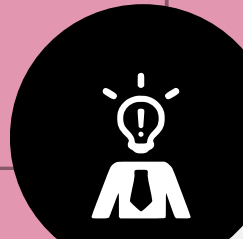
Self-Leadership




Developing New Managers



Office Politics for Managers




Middle Manager

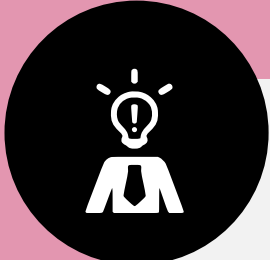



Conducting Annual Employee Reviews





PERSONAL DEVELOPMENT

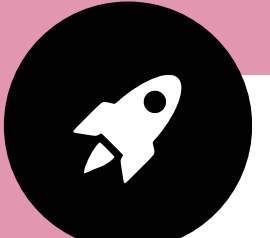
 Work-Life Balance

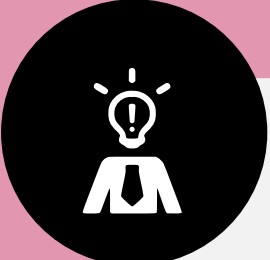
 Taking Initiative

 Stress Management

 Social Learning

 Social Intelligence


 Public Speaking


 Personal Productivity

 Improving Self-Awareness

 Increasing Your Happiness

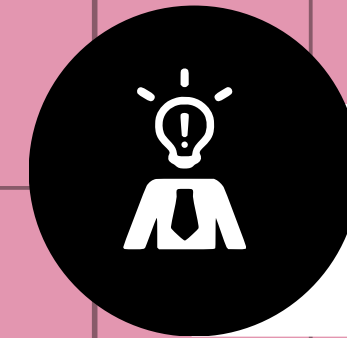
 Life Coaching Essentials

 Managing Personal Finances

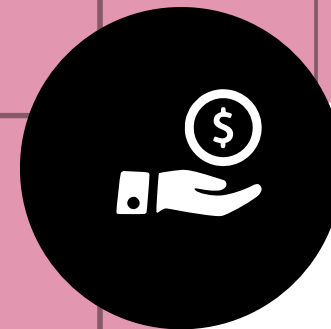
 Managing Workplace Anxiety



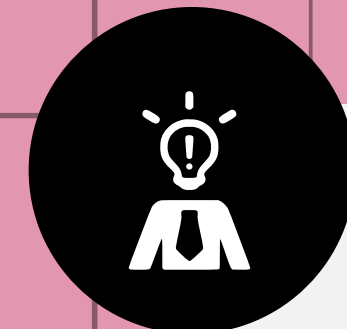
[Access 2016 Essentials](#)



[Excel 2016 Essentials](#)

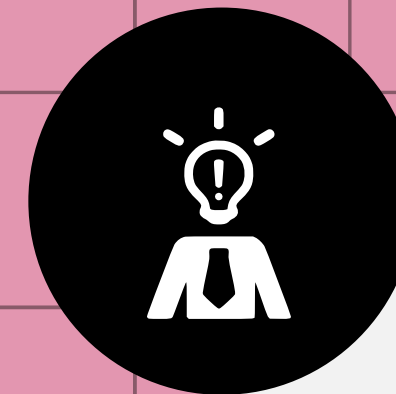


[Outlook 2016 Essentials](#)



[PowerPoint 2016 Essentials](#)

MICROSOFT

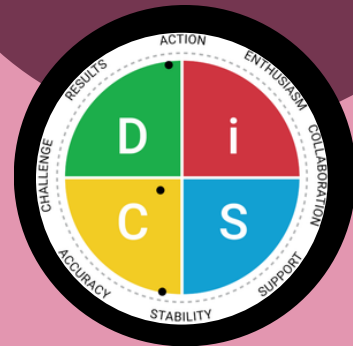


[Word 2016 Essentials](#)

Prior Learning Assessment (PLA) is the process of evaluating and assessing an individual's life learning for college credit, certification, or advanced standing toward further education or training. It is a pathway for assessing learning gained outside a traditional academic environment.



Everything DiSC Assessment is a personality test that helps individuals and organizations understand their communication preferences, how they respond to conflict, what motivates them, what causes them stress, how they approach problem-solving, how they make decisions, and how to identify DiSC styles.



Strong Interest Inventory (SII) Assessment is a career assessment tool that helps individuals identify their work personality by exploring their interests in six broad areas: realistic, artistic, investigative, social, enterprising, and conventional (often referred to using the acronym RIASEC). The SII is one of the world's most widely used career assessments, and it has been shown to be reliable and valid.



Myers-Briggs Type Indicator (MBTI®) Assessment is a self-report personality test that measures four personality dichotomies. The MBTI is a popular tool for personal development and career counseling. It can help people understand their personality preferences and how those preferences affect their interactions. The MBTI can also be used to help people make better decisions, set goals, and build relationships.



The Five Behaviors (Coming Soon) is a powerful tool that can help you build a team that is high-performing, innovative, and customer-focused using Trust, Conflict, Commitment, Accountability, and Results. The Five Behaviors of a Cohesive Team are a powerful tool for improving team performance. By focusing on these behaviors, teams can build trust, resolve conflict, achieve commitment, hold each other accountable, and achieve results.



ASSESSMENT SERVICES

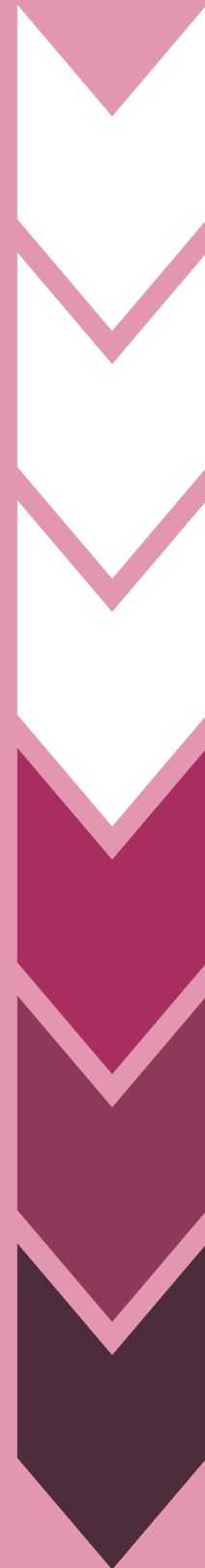
REASONS FOR LEARNING

The average enlistment time is approximately 15 years

- Career Advancement
- Professional pursuits
- Higher quality of life
- Change occupation



Step 1



Step 2



- Earned college credits from military training
- Military transcript
- College Level Examination Program
- Defense Activity for Non-Traditional Education Support (DANTES)

Improve proficiency and learn new skills.

- To attend officer candidate training
- Increased salary
- Increased job responsibilities
- Improved future opportunities



Step 3

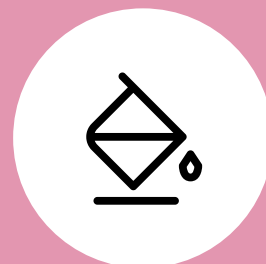
Step 4



Improves transitioning from the military to the civilian sector

Step 5

Tuition Assistance; 100% of college tuition is paid in most cases



Step 6



Saves time and money

EDUCATIONAL AND CAREER SERVICES



**One-on-One
personalized counseling**



Advisement/Consulting



Educational planning



Academic coaching



**Curriculum design
services**



**Higher Education
Application Assistance**



**Assistance Free Application for
Federal Student Aid (FAFSA)**



Placement Assistance



**Prior Learning
Assistance**



**Professional
Development**



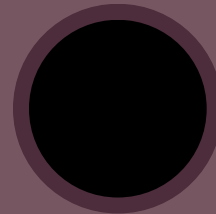
**Scholarship and
Financial Aid Counseling**



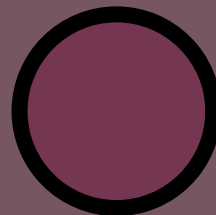
**Workshops for Adult
Education, Healthcare
Administration, Leadership,
and Management**



BENEFITS



Identify Strengths and Weaknesses: Guide them in self-assessment to recognize their strong points and areas needing improvement, and help them set realistic goals with a clear plan to achieve them



Provide Resources and Skill Building: Offer access to study materials, career guidance, and networking opportunities to enhance their knowledge and skills for success in their chosen field.



In addition, our service will benefit universities and other educational institutions by providing them with a pool of well-prepared and motivated students who are ready to excel in their studies and contribute to the growth of their respective industries.

11 - Agriculture, Forestry, Fishing, and Hunting.

21 - Mining, Quarrying, and Oil and Gas Extraction

22 - Utilities

23 - Construction

31-33 - Manufacturing.

42 - Wholesale Trade

44-45 - Retail Trade

48-49 -

Transportation and Warehousing

51 - Information

53 - Real Estate and Rental and Leasing.

54 - Professional and Technical Services

55 - Management of Companies and Enterprises

56 - Administrative and Waste Services

52 - Finance and Insurance

61 - Educational Services

62 - Health Care and Social Assistance

71 - Arts, Entertainment, and Recreation

72 - Accommodation and Food Services

81 - Other Services, Except Public Administration

92 - Public Administration

OTHER RESOURCES AVAILABLE

Military Resources

- [ACE Military Guide](#)
- [ACE National Guide](#)
- [ArmyIgnitED](#)
- [Defense Activity for Non-Traditional Education Support \(DANTES\)](#)
- [Department of Defense Voluntary Education](#)
- [Joint Services Transcript](#)
- [Learner Transfer Guide](#)
- [Student Guide to Credit for Prior Learning](#)
- [Air University](#)
- [Coast Guard Institute](#)
- [Community College of the Air Force](#)
- [Navy College Program](#)
- [USMC Training and Education Command](#)

Developing a Portfolio

- Portfolio Cover Page
- Table of Content
- Chronological Autobiography
- Resume
- Course Competency Matrix
- Learning Narrative
- Sample Recommendation and Documentation supporting request for PLA
- Portfolio

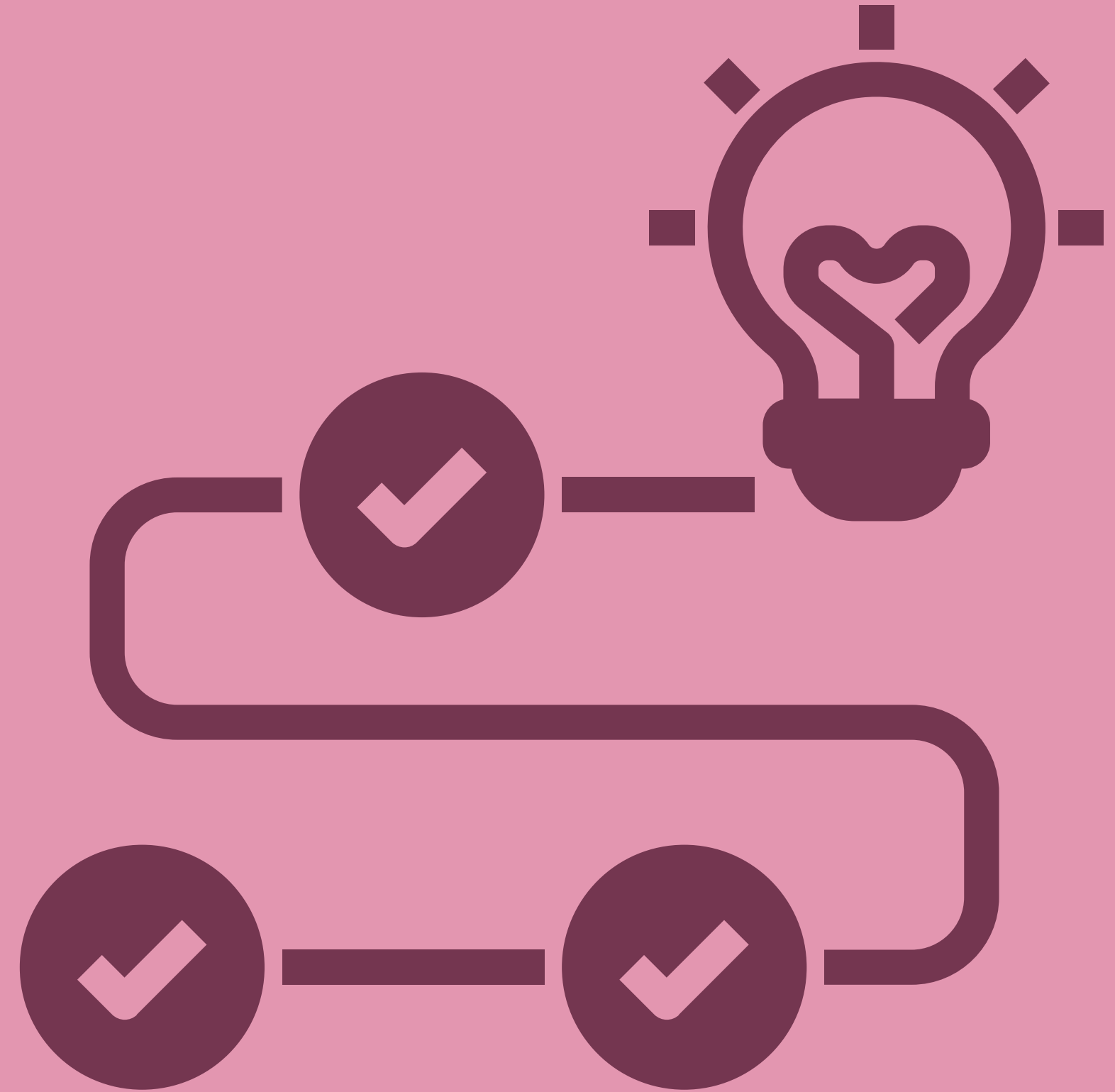
The need for high-quality educational consulting services has never been greater.

Our service aims to provide adults with the guidance and support they need to succeed in their chosen fields.

By leveraging technology, personalization, and collaboration with educational institutions, we believe that our service has the potential to make a significant impact on the lives of students worldwide.

We look forward to working with you to realize this vision.

CONCLUSION





BOREL

Educational Consulting Services

- Living to Learn -



DR. CYNTHIA BOREL (ED.D)

Owner, Borel Educational Consulting Services

 888-264-0240

 334-694-0346

 cdb@borelonline.com

 www.borelonline.com