



[ABOUT ME](#)

[FLOOR PLANS](#)

[COLOUR SCHEMES](#)

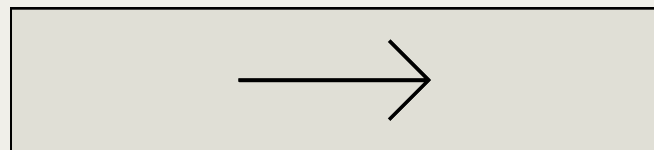
[SAMPLE BOARDS](#)

[KITCHEN DESIGN](#)

[CONTACT](#)

SAMANTHA ROBERTS-AIRD INTERIOR DESIGN PORTFOLIO

HELPING YOU TO CREATE THE BEAUTIFUL, FUNCTIONAL HOME YOU DESERVE.



[ABOUT ME](#)[FLOOR PLANS](#)[COLOUR SCHEMES](#)[SAMPLE BOARDS](#)[KITCHEN DESIGN](#)[CONTACT](#)

ABOUT ME

I have always been creative, and studied Art History and Fine Art, however after 15 years of working in Marketing, I decided to retrain and take the leap in to Interior Design. I've always known that home is where the heart is, however sometimes you just need a helping hand to bring that heart to life. I want to support families in creating the beautiful, functional home they deserve. My wealth of project management experience ensures I am there every step of the way, from idea generation, initial concept creation, through to finalising your finished room.

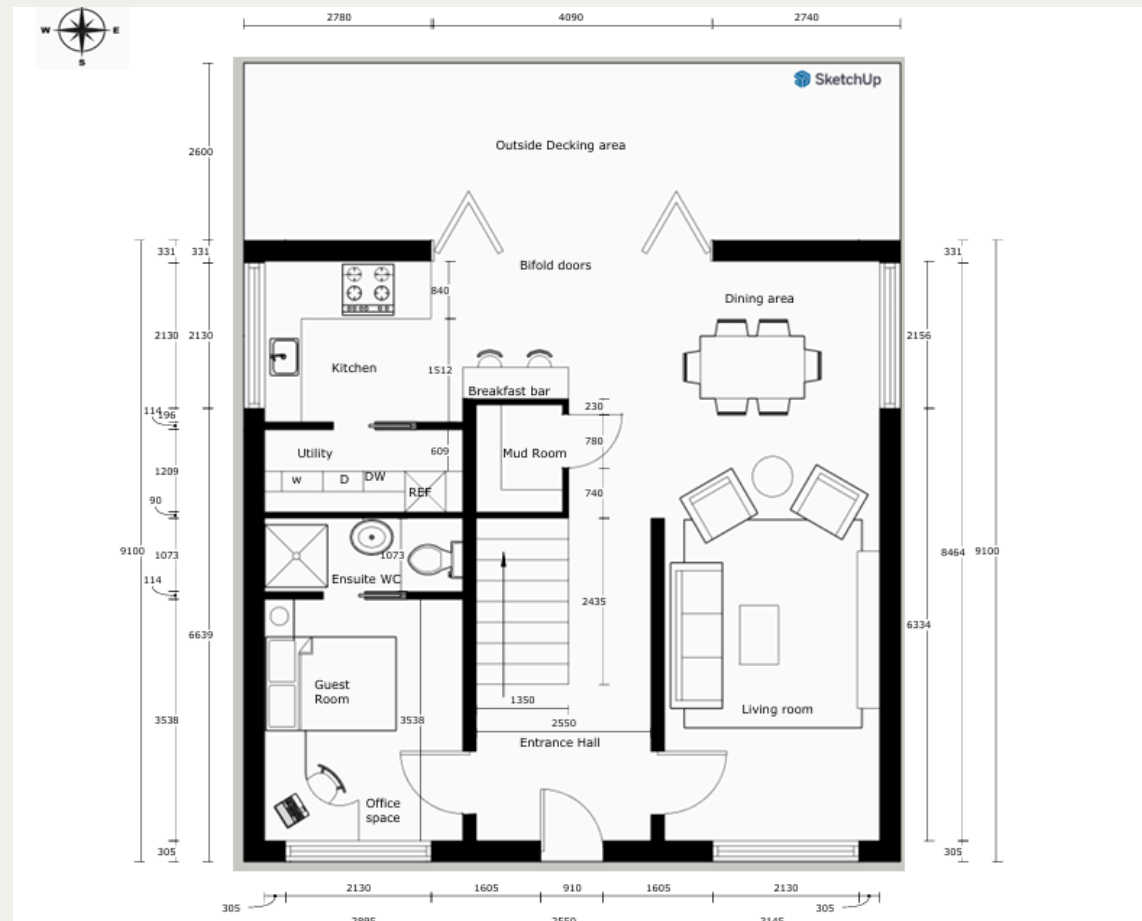
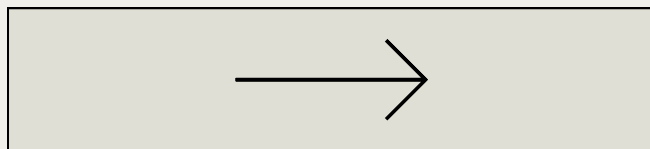
MY WORK

My work is warm, inviting, light and airy. I live on the coast, so nature and the coast line features heavily in my designs. I design simple, functional, beautiful homes that reflect the families that live there.



FLOOR PLANS

I've gained skills in technical, scale drawing and feel confident using SketchUp for floor plans and RCPs. I also feel confident to produce initial ideas and rough sketches by hand, which is particularly helpful when on site and discussing initial idea concepts.



Key:

- Single Door
- Bi Fold Door
- Window

Notes:
This floorplan is provided for informational purposes only. Consultation with structural engineer will need to be undertaken prior to commencement of work.

Project name:
IDI Module 4 Floorplan

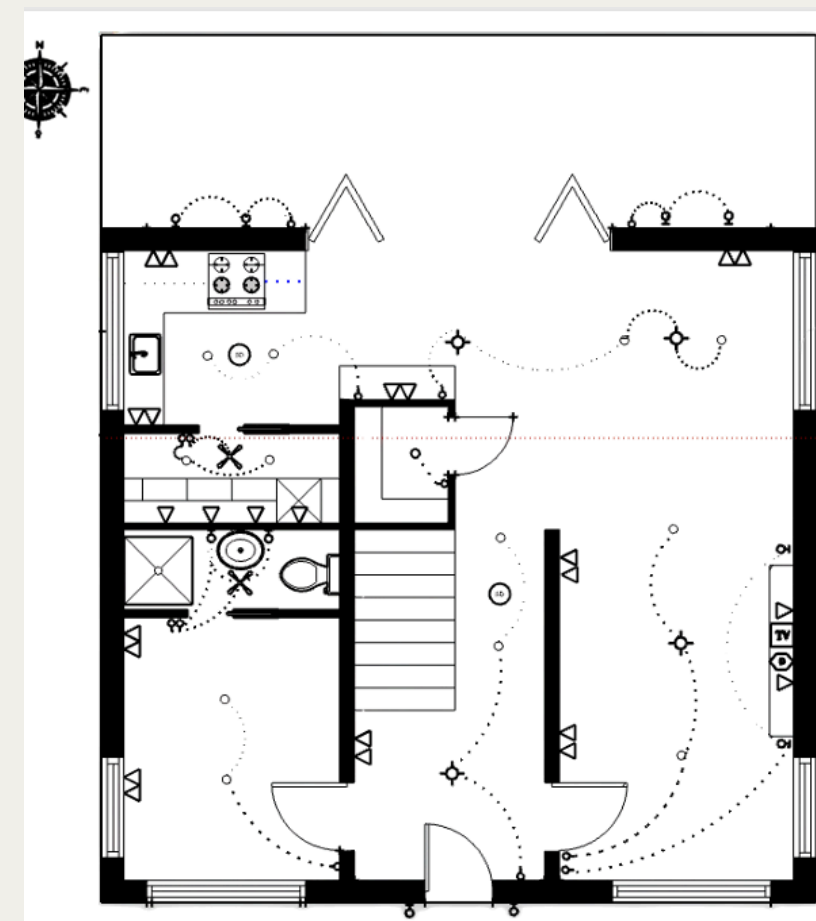
Drawing:
Ground Floor

Client Name:
Institute of Interior Design

Date:
July 2025

Drawing Number:
001

Scale:
1:50



Additional Notes:

Kitchen:

- General: x2 recessed down lights and x1 suspended pendant near breakfast bar (optional- install dimmer for pendant)
- Task- LED Strip lighting under cupboards
- Accent: option of lamps on worktops via double GPO

Electric:

- Double GPOs available on both sides of work tops and double GPO at the breakfast bar
- smoke detector

Utility:

- General: x2 Recessed downlights and x1 with fan

Electric:

- x4 GPOs for washing machine, tumble dryer, dishwasher and fridge/freezer.

Dining room:

- General: x2 recessed downlights, with x1 central suspended pendant (optional- install dimmer for pendant)
- Accent: double GPO installed for free standing corner lamp

Electric:

- Double GPO installed

Bedroom:

- General: x1 recessed downlight

Electric:

- x1/2 (only storage facility)

Living Room:

- General: x2 recessed downlights, x1 central suspended pendant
- Accent: x2 wall mounted fixtures around media wall unit, and lamps as options through GPOs either side of sofa.

Electric:

- x2 Double GPOs either side of sofa, x2 single GPO in media wall unit, x1 TV outlet, x1 Data outlet.

Guest room/Office:

- General: x2 Recessed downlights
- Task: x2 Double GPOs for lamps on office desk in the corner
- Accent: Lamps with GPO either side of bed.

Electric:

- x2 Double GPOs

Ensuite:

- General: - x1 ceiling fan/ light
- Task- x2 Wall mounted fixtures either side of vanity

Electric:

- General: x2 recessed downlights and x1 central suspended pendant
- Task: x2 Double GPOs for lamps on office desk in the corner
- Accent: Lamps with GPO either side of bed.

Electric:

- smoke detector
- double GPO

Exterior (front and back):

- Lighting:
- x2 Wall mounted fixtures at front door
- x4 Wall mounted fixtures at rear on decking

Key:

- Recessed
- Suspended
- Wall mounted
- Single

Electrical:

- TV
- Sm
- S

Notes:
After feedback was received Module 4 Floorplan, I have additional windows in the living room and living room to natural light on the south side of the property.

(NB: All works must be carried out by a registered electrician.)

Project Name:
IDI Module 5 Reflected (RCP)

Drawing:
Ground floor RCP

Client Name:
Interior Design Institute

Date:
August 2025

Drawing Number:
001

Scale:
Not to scale



ABOUT ME

FLOOR PLANS

COLOUR SCHEMES

SAMPLE BOARDS

KITCHEN DESIGN

CONTACT

COLOUR SCHEMES

SCHEME 2- MONOCHROMATIC

FLOOR PLAN

PAINT SCHEDULE

Image	Area	Surface	Name/Code	Paint type/finish
	living room, kitchen/ utility, dining room, ensuite, hallway, mudroom	walls	Dulux Egyptian cotton	Matt
	living room, kitchen/ utility, dining room, bedroom/office, ensuite, hallway, mudroom	skirting, doors and door frames	Dulux cliff walk	gloss
	living room, kitchen/ utility, dining room, bedroom/office, ensuite, hallway, mudroom	ceiling and coving	Dulux frosted dawn	matt
	hallway	east wall	Timothy Wilman Home- Tatton wallpaper (colour way- oat)	n/a
	bedroom/office	walls	Alhany- Pipkin Stripe (colour way - natural)	n/a
	living room, kitchen/ utility, dining room, bedroom/office, ensuite, hallway, mudroom	all floors	Elgin Latte Engineered Oak	n/a

MOODBOARD

COLOUR SCHEME

FLOORPLAN

PAINT SCHEDULE

MOODBOARD



ABOUT ME

FLOOR PLANS

COLOUR SCHEMES

SAMPLE BOARDS

KITCHEN DESIGN

CONTACT

SAMPLE BOARDS

GUEST BATHROOM

DINING ROOM



GUEST ROOM








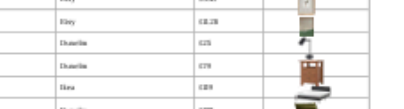


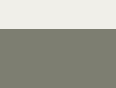

LIVING ROOM



SAMPLE BOARDS



TEENAGERS GOLF BEDROOM COST SCHEDULE

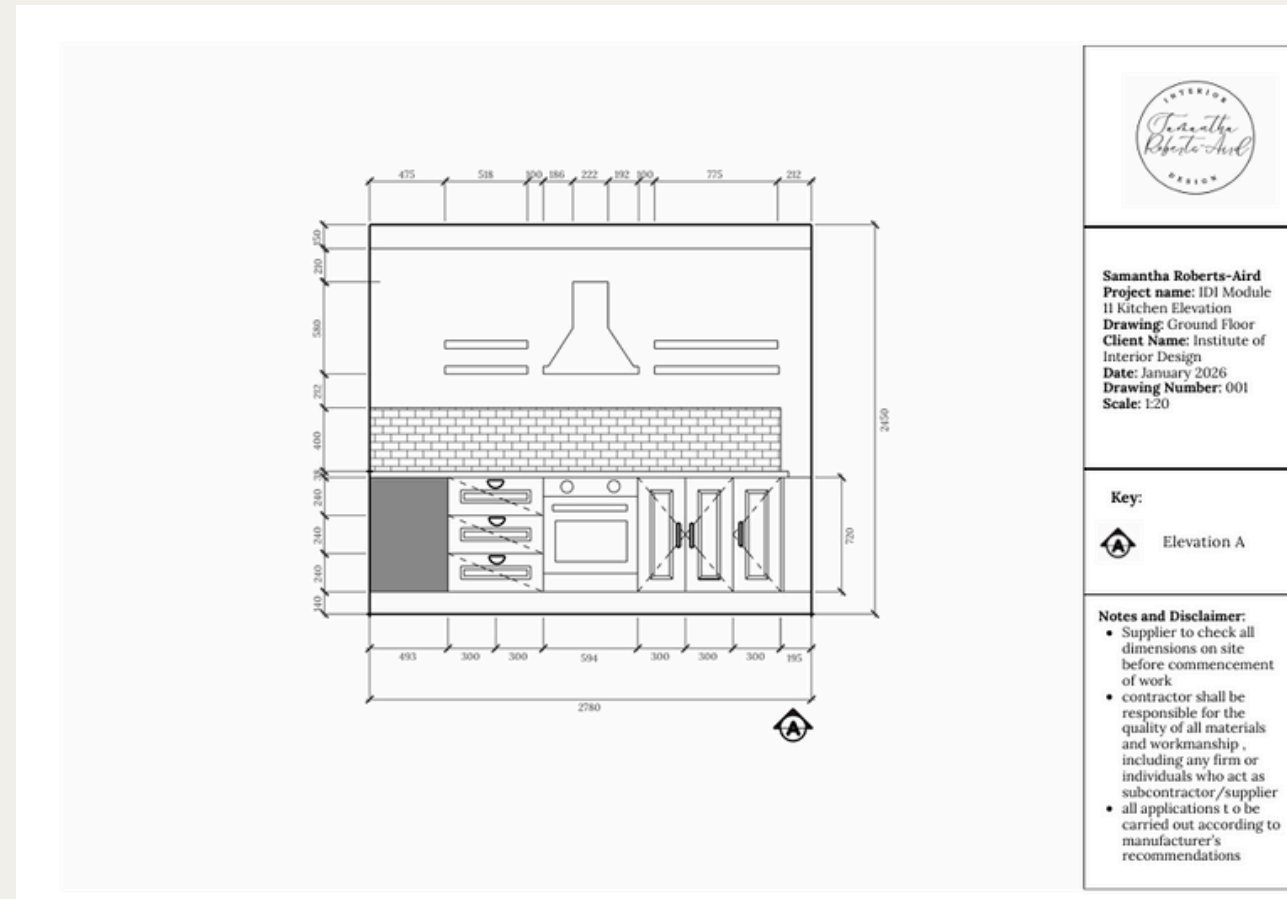
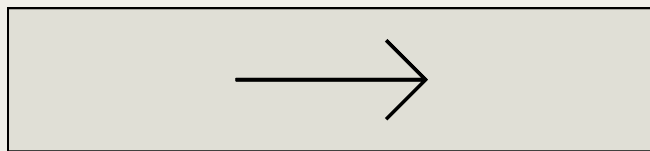
Item number	Product	Details	Supplier	Cost	Image
1	Light Fixture	Levity 2 Light Bond Floor Ceiling Light	Cherrie	165	
2	Wall paint	Harvey and Hub - matte green (egg) 2.5L. Includes half of walls, dado rail, skirting, door frames	Farrow and Ball	579	
3	Wardrobe	SMUTTED Storage combination, white, with frame, www.farrowandball.com	John	1000	
4	Desk	TEENAGE desk, off-white, www.farrowandball.com	John	1480	
5	Desk chair	Ball Height Adjustable Office Chair - Navy Brown	The Range	275.00	
6	Wallpaper	One wallpaper green - top half of wall above dado rail only	Wallpaper Direct	100 per roll x 2 rolls = 200	
7	Chilling stool	Harvey and Hub - School Tote stool - white	Farrow and Ball	110	
8	Boxed Bed	Leona Range Chateau Bedroom Bed	Blinds to go	1200	
9	Chairs	Harvey and Hub - Chairs, natural	Cherrie	1200	
10	Chairer price	green golf coverer price with gaffers	Elly	15.00	
11	Chairer price	Chair ball on top price	Elly	15.00	
12	Chairer price	Chair coverer price	Elly	18.25	
13	Bedside Lamp	Harvey and Hub - Bedside Table Lamp	Cherrie	120	
14	Bedside table	Cherry 2 Drawers Bedside Table 12	Cherrie	179	
15	Bed	SMUTTED upholstered bed frame. Teal, dark grey, Harlequin fabric	John	1899	
16	Bed's bed / wardrobe	Leona Range Chateau Bedroom Bed	Cherrie	1279	
17	Cushion	Stark and Spenser - 12	Stark and Spenser	130.00	
18	Cushion	Chair cushions	Bedside	110	
19	Rug	CHERRYWOOD RUG 180x120	WILSONS	2399.00	
20	Bedding	White cotton bedding, double	Cherrie	100	
		Total		3864.00	

I pride myself on my ability to support families in creating rooms that represent who they are, and how they live. I enjoy compiling schemes that incorporate colour, light and texture whilst ensuring we stay true to budget requirements. My sample boards and cost schedules are comprehensive and ensure all elements are accounted for during your renovation.



KITCHEN DESIGN

Kitchen design requires precise space planning skills, which I then communicated through my scaled elevation drawings. Sourcing appropriate materials for the space whilst not sacrificing style is really important to me.





ABOUT ME

FLOOR PLANS

COLOUR SCHEMES

SAMPLE BOARDS

KITCHEN DESIGN

CONTACT

CONTACT

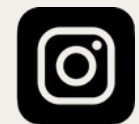
I'd be thrilled to help you to create a home that reflects you and your family, so if you wish to get in touch, please do so below.



www.samantharobertsairdinteriors.com



sam@samantharobertsairdinteriors.com



[sra_interiordesign](https://www.instagram.com/sra_interiordesign)



Online portfolio-

<https://www.theinteriordesigninstitute.com/uk/en/portfolio/SamanthaRobertsAird>

