

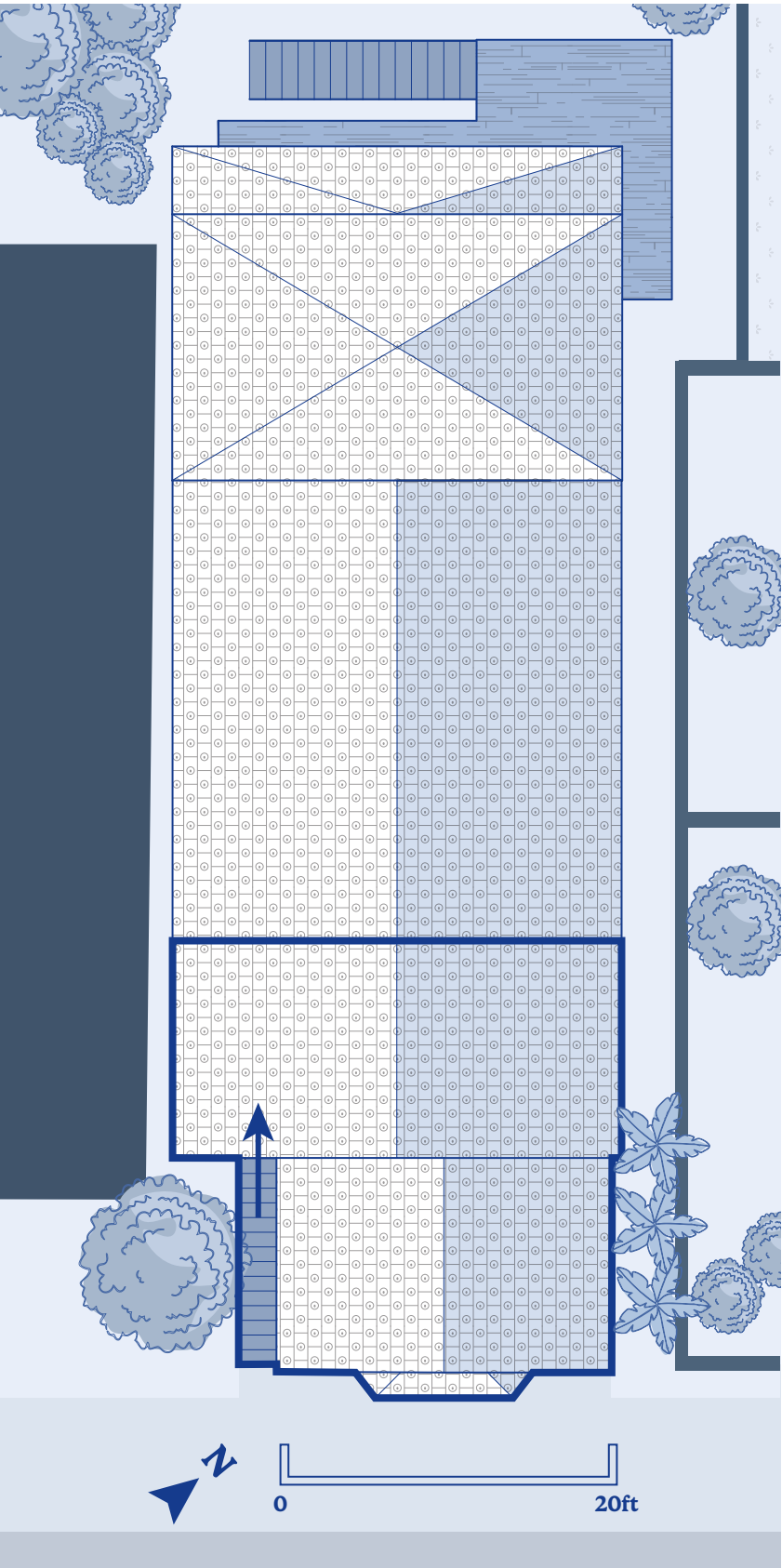
Harmony Homestead

2325 Inyo Ave

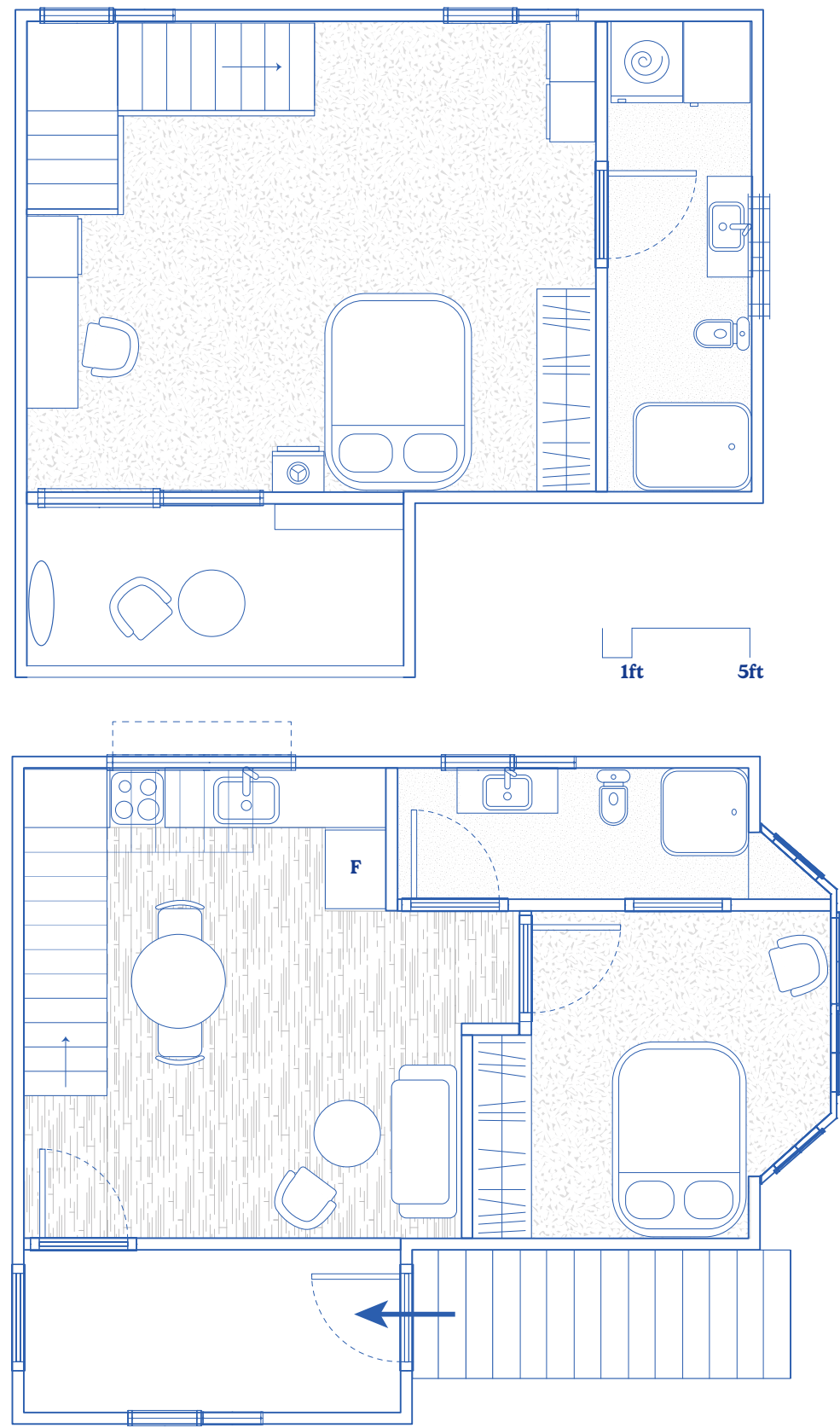
Aging in place in a balanced dwelling for two. The lower level has the necessities an aging resident will need. The upper level has personal space and privacy for an on-site nurse to live comfortably.



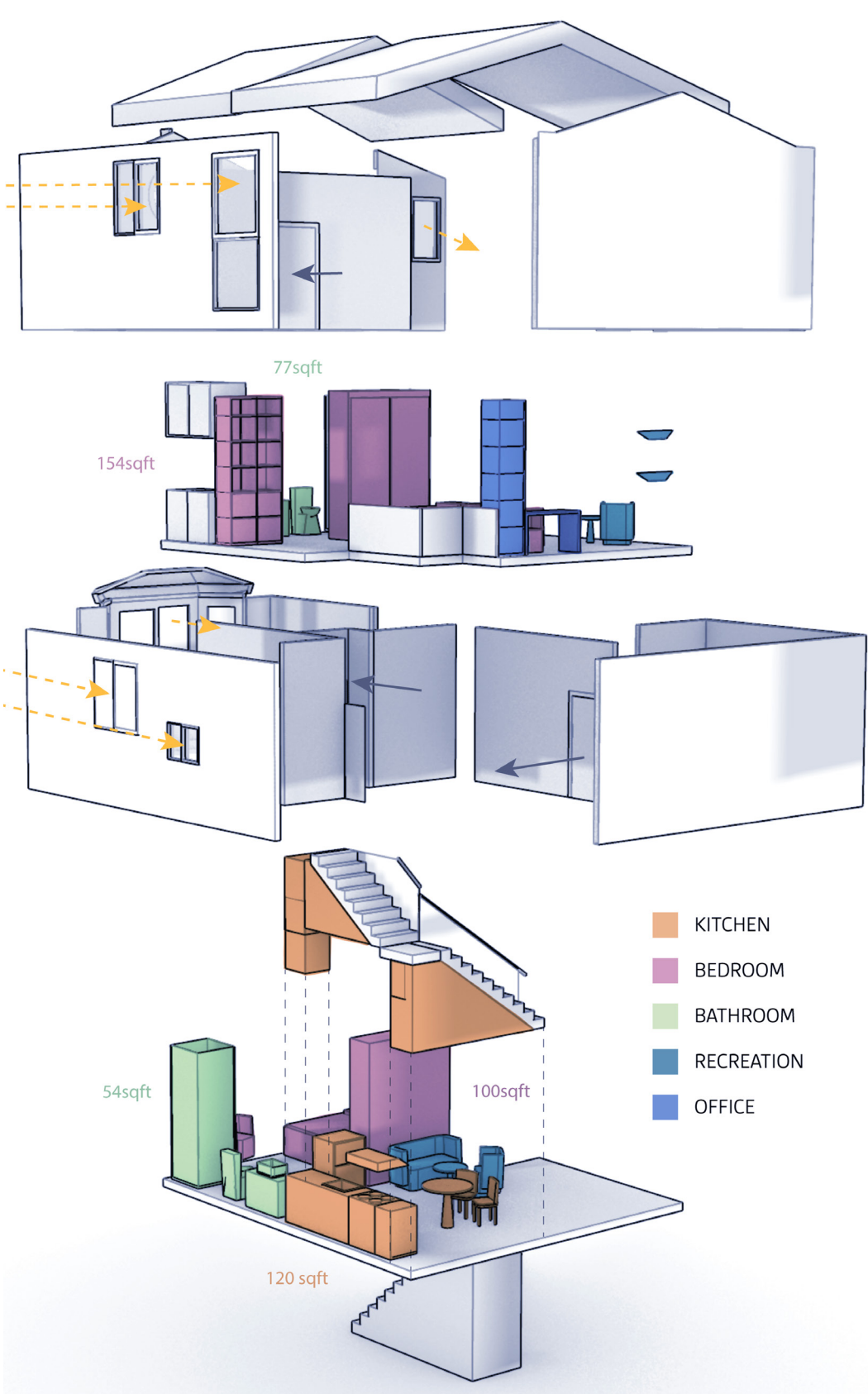
Site Plan



Floor Plan

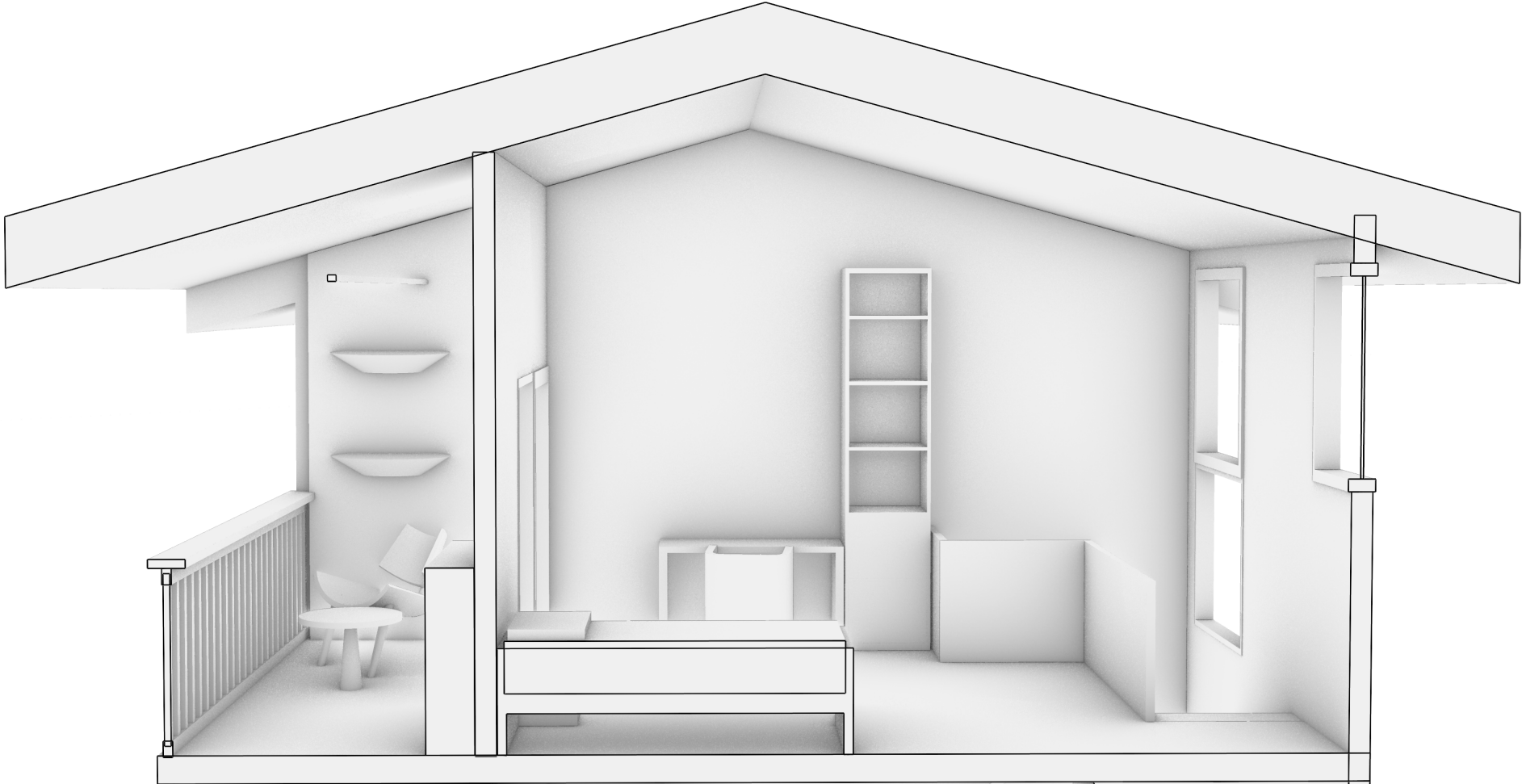


Exploded Axon



Second Floor

Accommodates a resident who is aging in place by making all their living needs close to them. There is a lot of natural light provided to make spaces easier to navigate and move around in. The furniture in each space is also color-coded to make it easier to identify where they are.



Elevation

The ADU is on the second floor with a steep flight of stairs. To limit the amount of stairs the residents have to use, I designed the main living and social areas to one floor. The ADU also had a bay window, which was used to create a vibrant bedroom.

