



'22 trail stop #3

“THE BRONZEBACK YAK CHALLENGE”

June 18th

Shenandoah, Rappahannock,
and Upper Potomac River Systems



Assumptions and Expectations

Understand that these boundary lines DO NOT represent safe “to and from” floats for this event. These boundary lines are ONLY used to indicate the farthest authorized points of fishing for this event. Ensure you conduct your research and KNOW YOUR FLOAT. There are MULTIPLE unsafe places on each of these bodies of water, so it is imperative that you always wear your personal floatation device (PFD) and carry all necessary safety items while floating these rivers. It is HIGHLY encouraged that you float with a buddy.

When researching floats with whitewater class ratings, remember that a rapid’s class is NOT fixed and can vary greatly depending on the water depth and speed of flow. Some rapids may be easier at higher flow because the features of the river are covered or “washed out”. However, higher water levels usually make rapids more difficult, unpredictable, and dangerous.

EXPECT TO FLIP! Remember that a neat kayak is a SAFE kayak. Bring a dry bag. Limiting the number of tethers, loose tackle, loose rods, and fishing line will greatly increase your chances of survival in the event of a capsizing on moving water. Here is a good article that talks about kayak river fishing safety. <https://paddling.com/learn/top-tips-for-kayak-fishing-on-flowing-rivers>

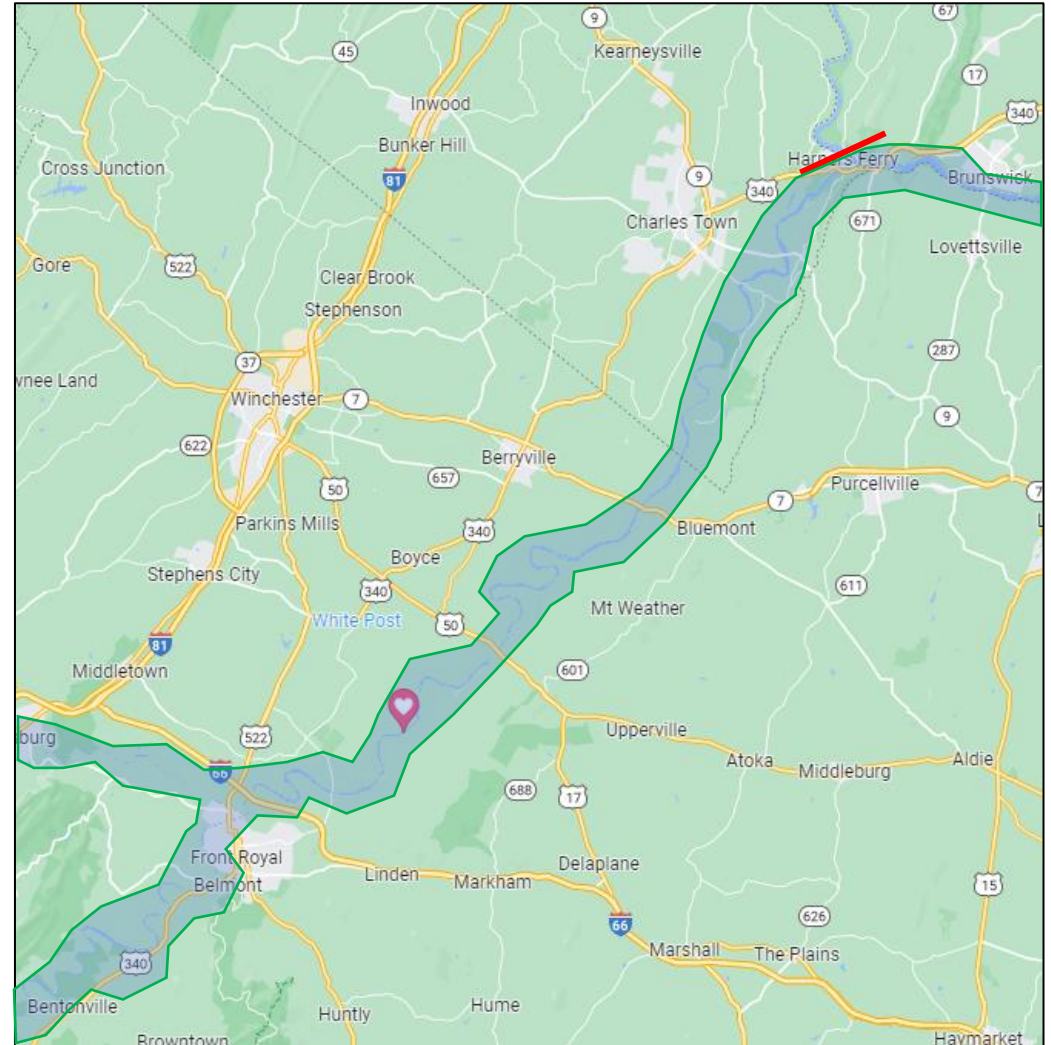
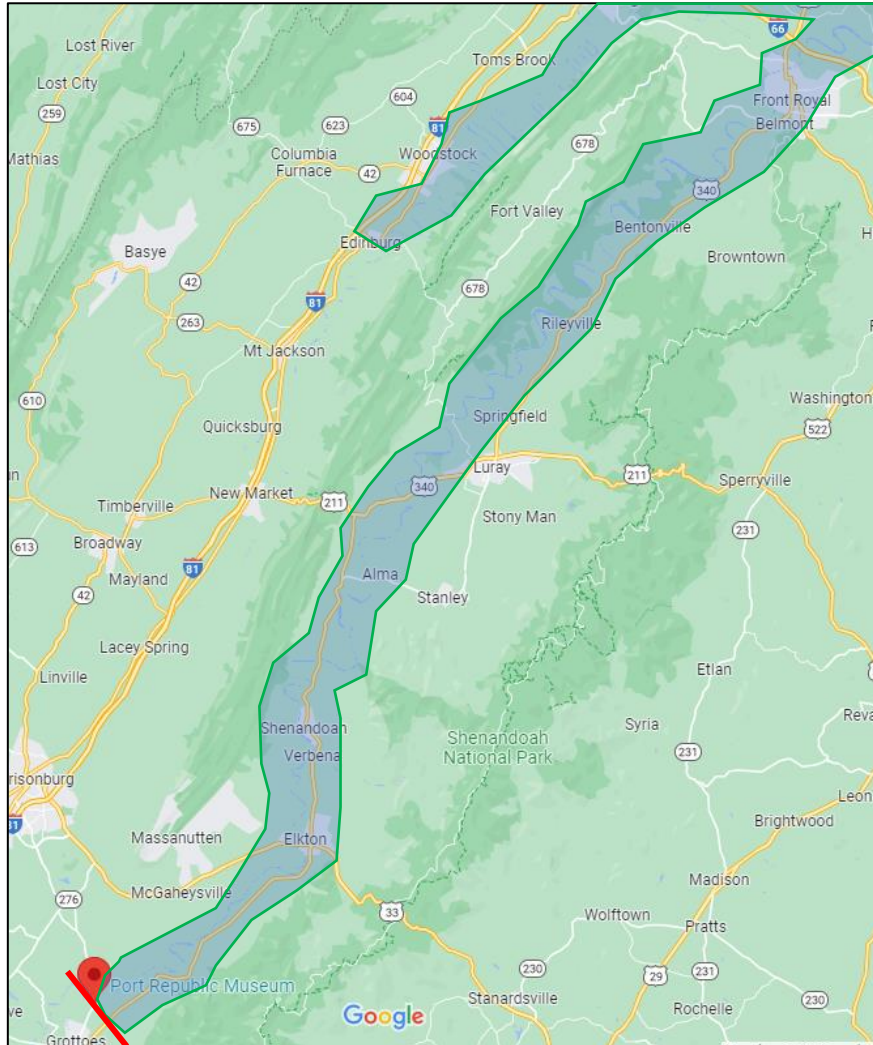
Invest in water trail guidebooks!

Shenandoah River (Front Royal Outdoors): <https://frontroyaloutdoors.com/shenandoah-trip-information/shenandoah-river-info/shenandoah-river-maps/>

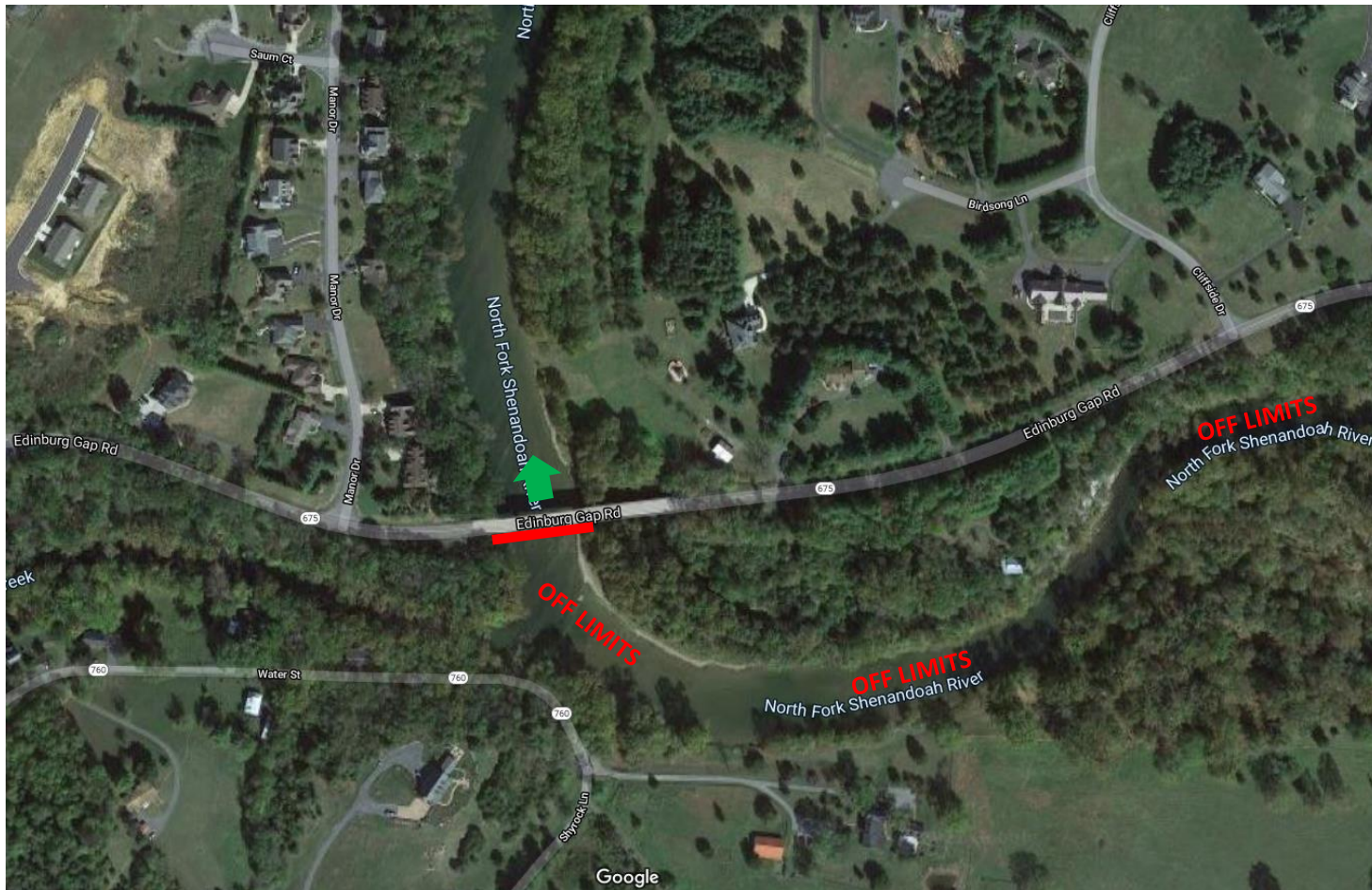
Rappahannock & Rapidan Rivers (Friends of the Rappahannock): <https://riverfriends.org/>

Upper Potomac River (GMCO Maps): <https://www.gmcomaps.com/product/upper-potomac-river-pro-series/>

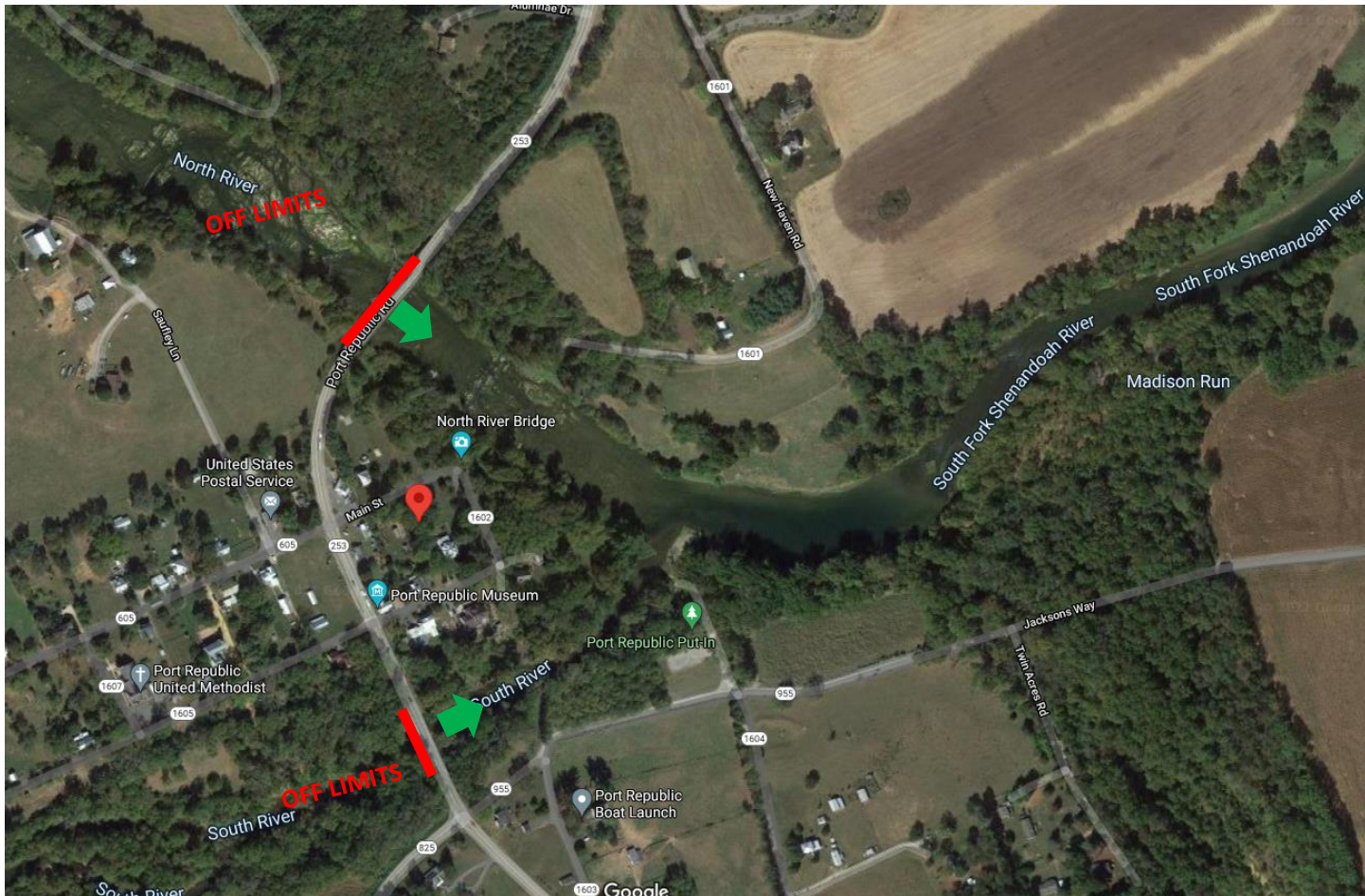
Shenandoah Overview



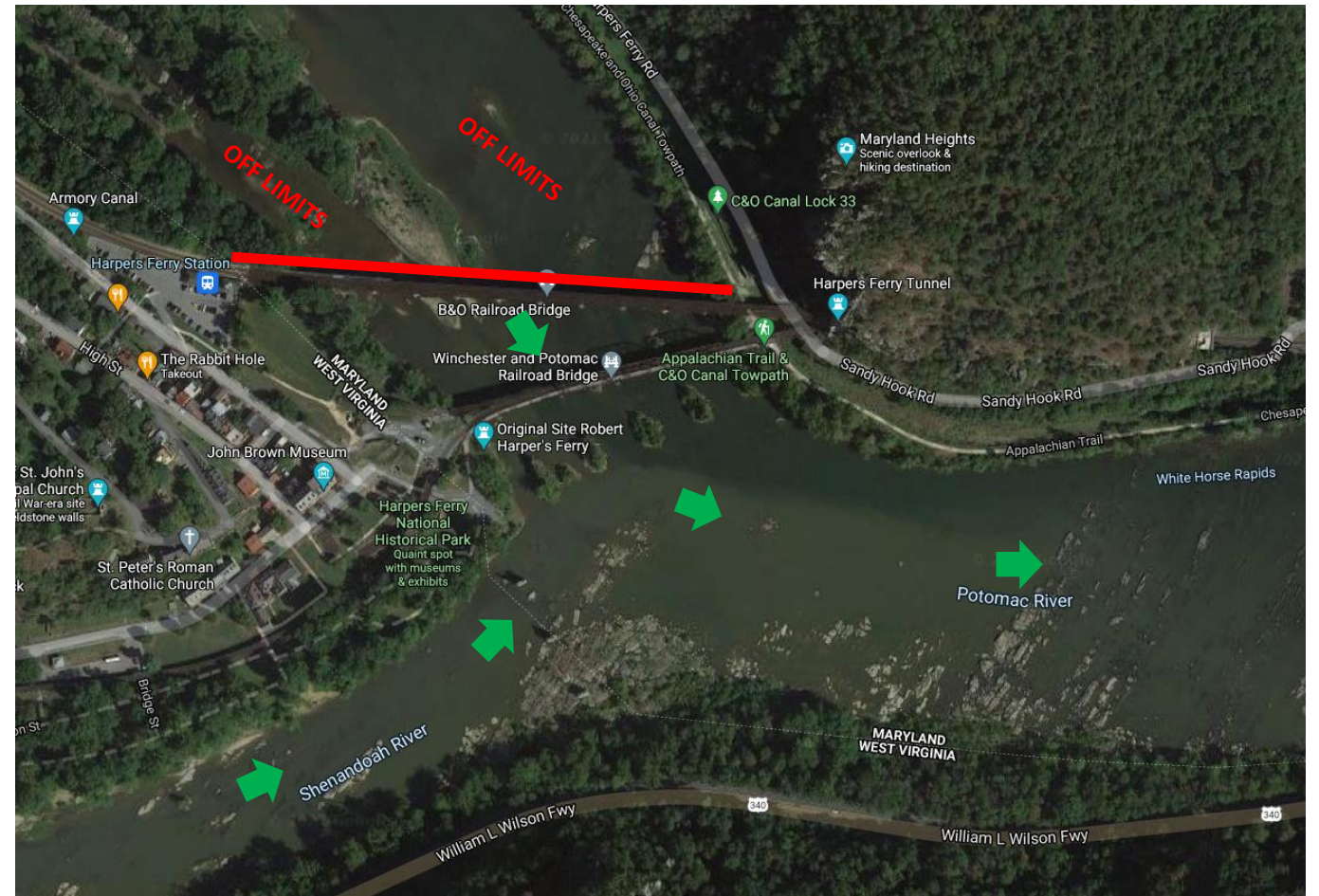
North Fork Shenandoah River: Edinburg (675 Bridge) to North Fork and South Fork confluence (Riverton)



South Fork Shenandoah River: Port Republic (253 Bridge) to North Fork and South Fork confluence (Riverton)

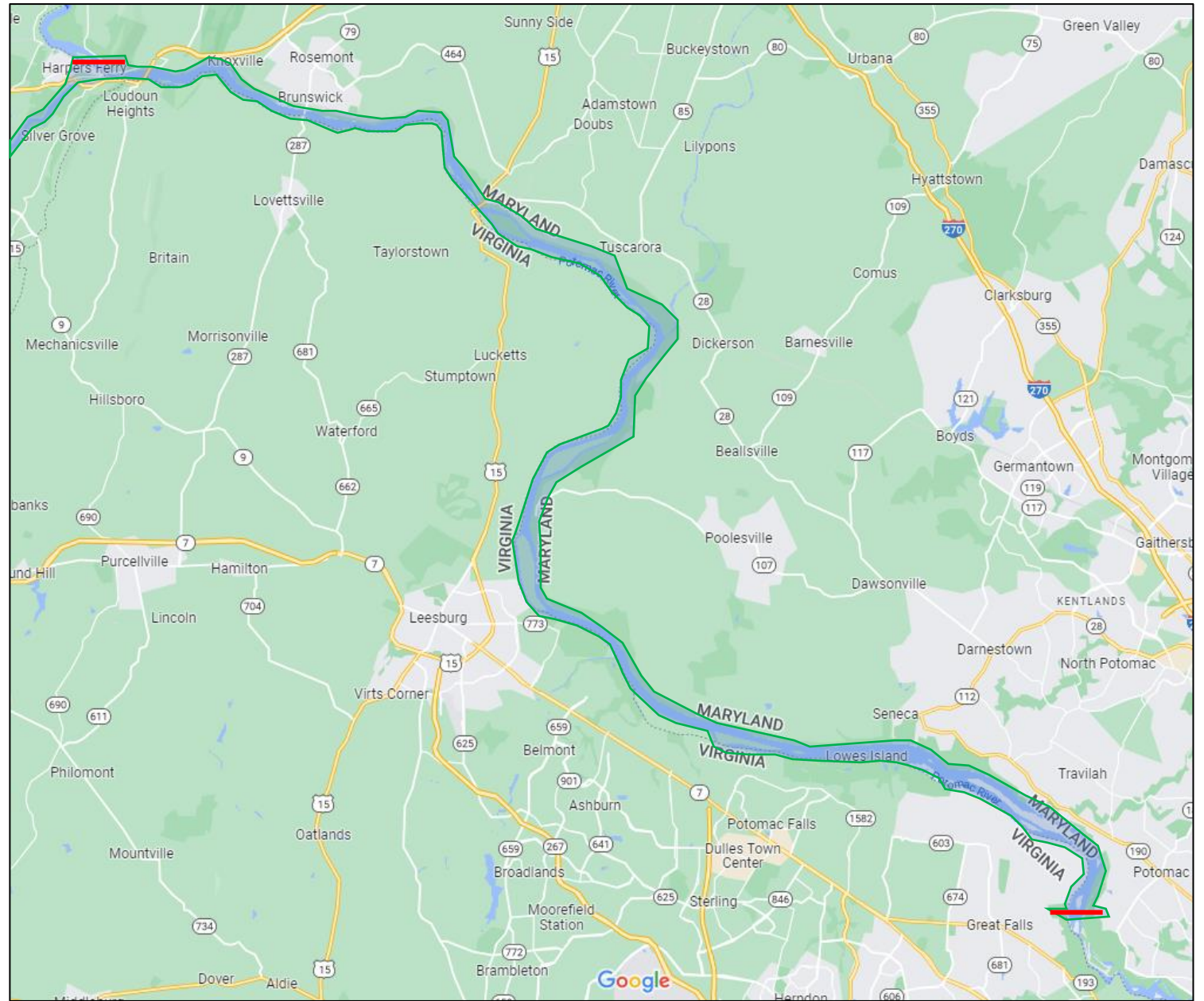


Shenandoah River: North Fork and South Fork confluence (Riverton) to Harpers Ferry (B&O Railroad bridge)

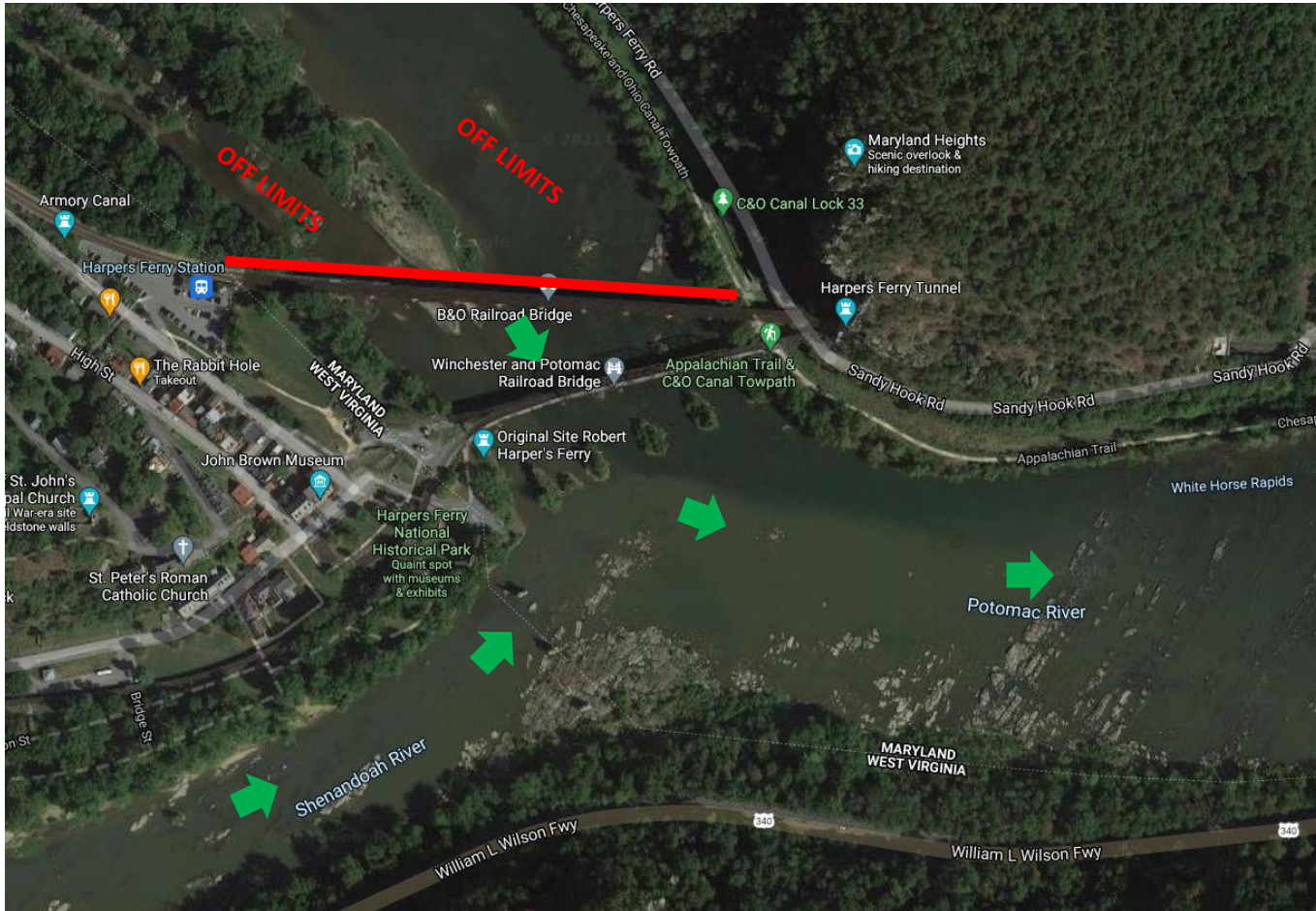


Upper Potomac

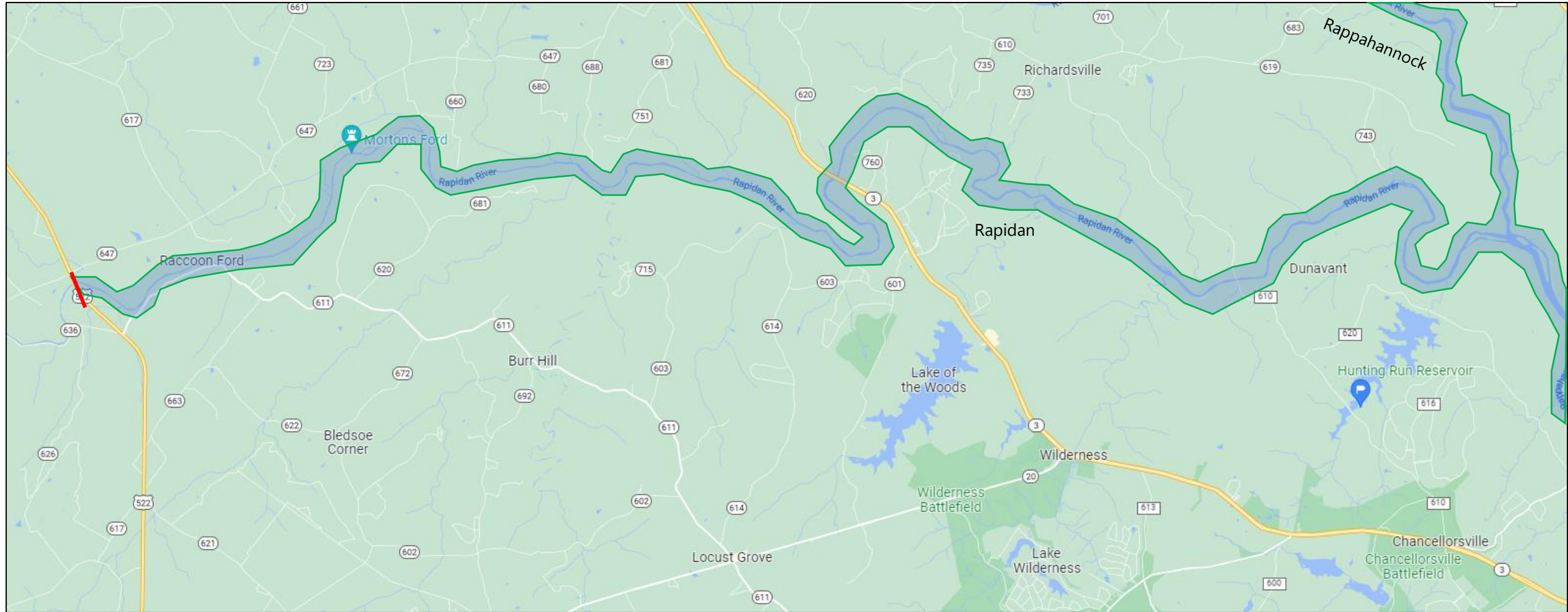
- Highlights:
 - Northern aqueducts are eligible waters **ONLY** to the B&O railroad bridges. See maps for details
 - All waters past the Riverbend marker buoys are **OFF LIMITS**



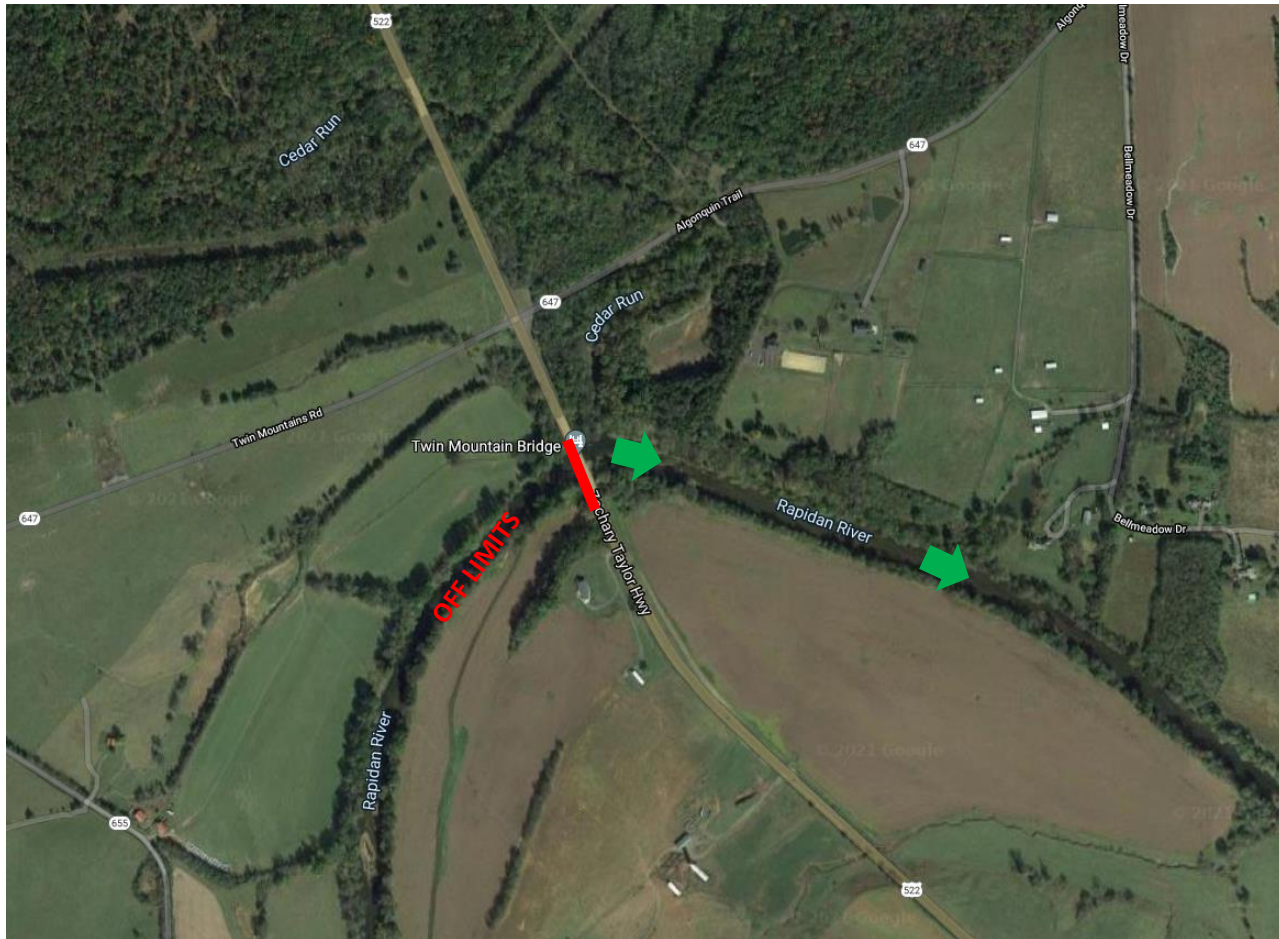
Upper Potomac River: Harpers Ferry to Riverbend Park area (no further south beyond marker buoys)



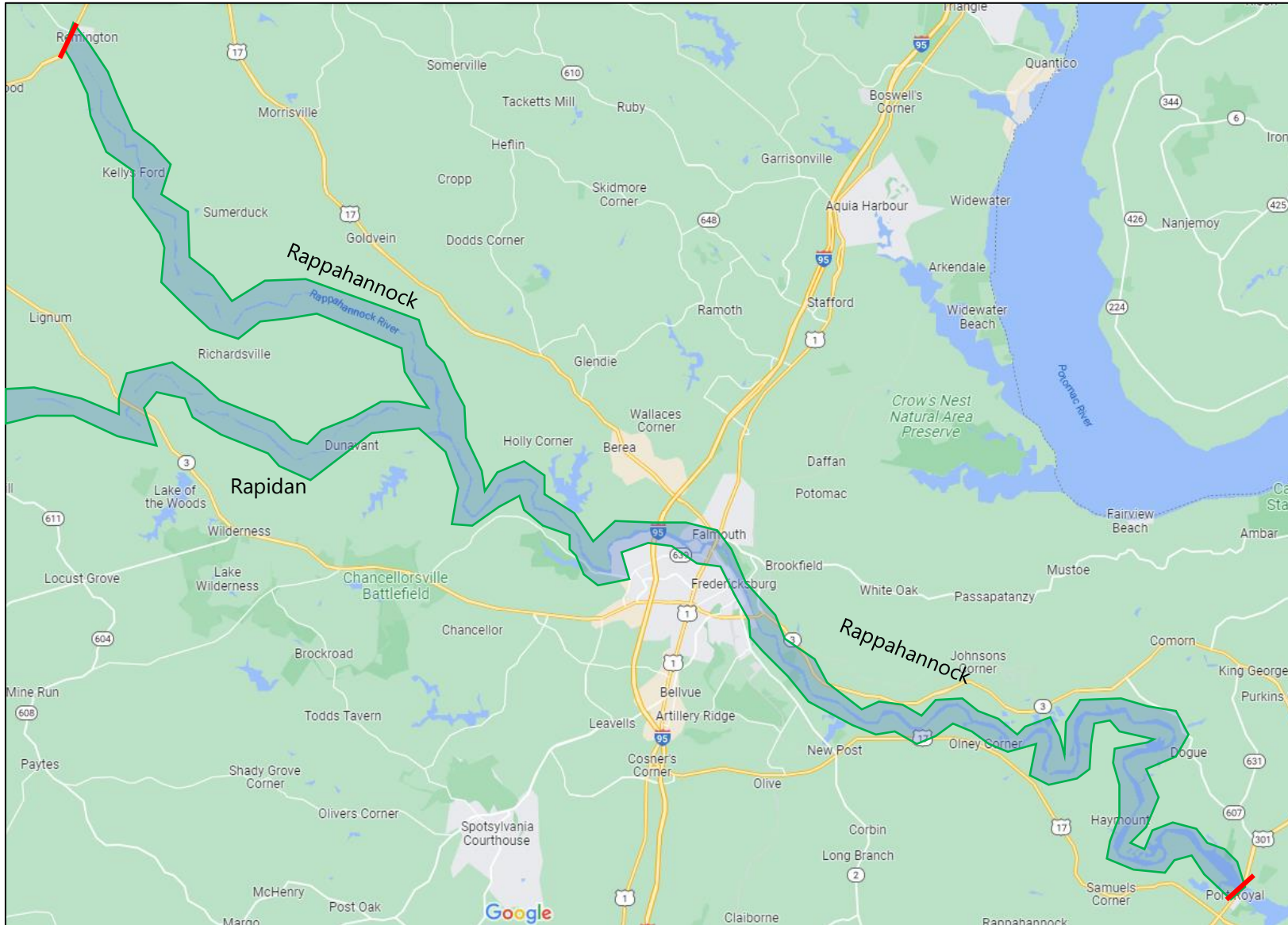
Rapidan Overview



Rapidan River: Rt. 522 (Twin Mountain Bridge) to Rappahannock confluence (Dunn's Run Island)



Rappahannock Overview



Rappahannock River: Remington Bridge (Rector Tract area) to Port Royal (301 Bridge)

